



---

## Central Valley Regional Water Quality Control Board

14 December 2017

Baker Holden  
U.S. Fish and Wildlife Service  
850 S. Guild Ave., Suite 105  
Lodi, CA 95240

CERTIFIED MAIL  
91 7199 9991 7036 6989 1148

### **CLEAN WATER ACT SECTION 401 WATER QUALITY CERTIFICATION AND ORDER FOR THE HALLWOOD SIDE CHANNEL AND FLOODPLAIN RESTORATION PROJECT, YUBA COUNTY (WDID#5A58CR00140)**

Enclosed please find a Clean Water Act Section 401 Water Quality Certification and Order, authorized by Central Valley Regional Water Quality Control Board Executive Officer, Pamela C. Creedon. This Order is issued to U.S. Fish and Wildlife Service for Hallwood Side Channel and Floodplain Restoration Project (Project). Attachments A through F of the Enclosure are also part of the Order.

This Order is issued in response to an application submitted by U.S. Fish and Wildlife Service for proposed Project discharge to waters of the state, to ensure that the water quality standards for all waters of the state impacted by the Project are met. You may proceed with your Project according to the terms and conditions of the enclosed Order.

Please review your Order carefully to ensure that you understand all aspects of the Order. Note that this Order requires reporting and notification. Requirements for the content of the reporting and notification requirements are detailed in Attachment D, including specifications for photo and map documentation during the Project. Written reports and notifications must be submitted using the Reporting and Notification Cover Sheet located in Attachment D, which must be signed by the Permittee or an authorized representative.

These reports, notifications, and other submissions must be submitted in a searchable Portable Document Format (PDF). Documents less than 50 MB must be emailed to: [centralvalleysacramento@waterboards.ca.gov](mailto:centralvalleysacramento@waterboards.ca.gov). In the subject line of the email, include the Central Valley Water Board Contact, Project name, and WDID. Documents that are 50 MB or larger must be transferred to a disk and mailed to the Central Valley Water Board Contact.

If you require further assistance, please contact me by phone at (916) 464-4856 or by email at [Nicholas.White@waterboards.ca.gov](mailto:Nicholas.White@waterboards.ca.gov). You may also contact Elizabeth Lee, Unit Supervisor, by phone at (916) 464-4787 or by email at [Elizabeth.Lee@waterboards.ca.gov](mailto:Elizabeth.Lee@waterboards.ca.gov).

*Original Signed by Nicholas White*

Nicholas White  
Water Resource Control Engineer  
401 Water Quality Certification Unit

Enclosures (1): Order for Hallwood Side Channel and Floodplain Restoration Project

cc: [Via email only] (w/ enclosure):

Sam Ziegler  
United States Environmental Protection Agency  
Ziegler.Sam@epa.gov

Kellie Berry  
United States Fish & Wildlife Service  
Kellie\_Berry@fws.gov

California Department of Fish and Wildlife, Region 2  
R2LSA@wildlife.ca.gov

CWA Section 401 WQC Program  
Division of Water Quality  
State Water Resources Control Board  
Stateboard401@waterboards.ca.gov

Elizabeth Lee  
Unit Supervisor  
Central Valley Regional Water Quality Control Board, Sacramento  
Elizabeth.Lee@waterboards.ca.gov

cc: (w/ enclosure):  
Robert Chase (SPK-2016-00524)  
United States Army Corps of Engineers  
Sacramento District Headquarters  
1325 J Street, Room 1350  
Sacramento, CA 95814-2922

Bill Jennings  
CA Sportfishing Protection Alliance  
3536 Rainier Avenue  
Stockton, CA 95204

---

Central Valley Regional Water Quality Control Board

---

---

**CLEAN WATER ACT SECTION 401 WATER QUALITY CERTIFICATION AND ORDER**

---

**Effective Date:** 14 December 2017

**Expiration Date:** 13 December 2022

**Program Type:** Restoration

**Project Type:** Ecological Aquatic/Stream/Habitat Restoration

**Project:** Hallwood Side Channel and Floodplain Restoration Project (Project)

**Applicant:** U.S. Fish and Wildlife Service  
**Applicant Contact:** Baker Holden  
850 S. Guild Ave., Suite 105  
Lodi, CA 95240  
Phone: (209) 334-2968  
Email: Baker\_Holden@fws.gov

**Applicant's Agent:** Joseph E. Merz Ph.D  
Cramer Fish Sciences  
3300 Industrial Blvd., Suite 100  
West Sacramento, CA 95691  
Phone: (209) 614-4073  
Email: jmerz@fishsciences.net

**Water Board Staff:** Nicholas White  
Water Resource Control Engineer  
11020 Sun Center Drive, Suite 200  
Rancho Cordova, CA 95670  
Phone: (916) 464-4856  
Email: Nicholas.White@waterboards.ca.gov

**Water Board Contact Person:**

If you have any questions, please call Central Valley Regional Water Quality Control Board (Central Valley Water Board) Staff listed above or (916) 464-3291 and ask to speak with the Water Quality Certification Unit Supervisor.

**Table of Contents**

I. Order ..... 3

II. Public Notice ..... 3

III. Project Purpose..... 3

IV. Project Description ..... 3

V. Project Location..... 3

VI. Project Impact and Receiving Waters Information ..... 3

VII. Description of Direct Impacts to Waters of the State..... 4

VIII. Description of Indirect Impacts to Waters of the State ..... 5

IX. Avoidance and Minimization ..... 5

X. Compensatory Mitigation ..... 6

XI. California Environmental Quality Act (CEQA) ..... 6

XII. Petitions for Reconsideration..... 6

XIII. Fees Received ..... 6

XIV. Conditions ..... 6

XV. Water Quality Certification .....16

- Attachment A** Project Map
- Attachment B** Receiving Waters, Impact, and Mitigation Information
- Attachment C** CEQA Findings of Facts
- Attachment D** Report and Notification Requirements
- Attachment E** Signatory Requirements
- Attachment F** Certification Deviation Procedures

**I. Order**

This Clean Water Act (CWA) section 401 Water Quality Certification action and Order (Order) is issued at the request of U.S. Fish and Wildlife Service (herein after Permittee) for the Project. This Order is for the purpose described in application submitted by the Permittee. The application was received on 6 November 2017. The application was deemed complete on 4 December 2017.

**II. Public Notice**

The Central Valley Water Board provided public notice of the application pursuant to California Code of Regulations, title 23, section 3858 from 9 November 2017 to 30 November 2017. The Central Valley Water Board did not receive any comments during the comment period.

**III. Project Purpose**

The 165-acre Project will improve habitat for native fish and wildlife adjacent to a reach of the lower Yuba River below Daguerre Point Dam.

**IV. Project Description**

The 165-acre Hallwood Side Channel and Floodplain Restoration Project (Project) will reclaim the currently disconnected floodplain, rehabilitate side channels through the floodplain, reduce channel confinement, restore riparian vegetation, place large woody debris in the channel to provide cover from high flow velocities and predators for juvenile salmonids, and enhance rearing habitat by removing approximately 3.1 million cubic yards of mining era sediment and placing approximately 122 thousand cubic yards of river rock and woody debris.

**V. Project Location**

Lower Yuba River below Daguerre Point Dam near Hallwood in Yuba California  
Sections 2, 25, 31, Township 15, 16 North, Range 4, 5 East, MDB&M.

Start: Latitude: 39°11'13.2"N and Longitude: 121°29'24.0"W

End: Latitude: 39°12'14.4"N and Longitude: 121°26'47.0"W

Maps showing the Project location is found in Attachment A of this Order.

**VI. Project Impact and Receiving Waters Information**

The Project is located within the jurisdiction of the Central Valley Water Board. Receiving waters and groundwater potentially impacted by this Project are protected in accordance with the Water Quality Control Plan for the Sacramento River and San Joaquin River Basins, Fourth Edition, revised April 2016 (Basin Plan). The Basin Plan for the region and other plans and policies may be accessed online at: [http://www.waterboards.ca.gov/plans\\_policies/](http://www.waterboards.ca.gov/plans_policies/). The Basin Plan includes water quality standards, which consist of existing and potential beneficial uses of waters of the state, water quality objectives to protect those uses, and the state and federal antidegradation policies.

It is the policy of the State of California that every human being has the right to safe, clean, affordable, and accessible water adequate for human consumption, cooking, and sanitary purposes. This Order promotes that policy by requiring discharges to meet maximum contaminant levels designed to protect human health and ensure that water is safe for domestic use.

Project impact and receiving waters information can be found in Attachment B. Table 1 of Attachment B shows the receiving waters and beneficial uses of waters of the state impacted by the Project. Individual impact location and quantity is shown in Table 2 of Attachment B.

## **VII. Description of Direct Impacts to Waters of the State**

Direct impacts to waters of the State involve the placement of approximately 52,000 cubic yards of native river rock to wetlands, placement of approximately 69,000 cubic yards of native river rock and approximately 1,200 cubic yards of large woody material/structures to streambed, the re-contour and topographic modifications to approximately 165 acres, the offsite removal of historic dredging spoils from the river corridor (the bulk of the Middle Training Wall (MTW); Figure 2), and construction of other micro-habitat features. Topographic modifications include the removal of approximately 3.1 million cubic yards of historic dredging spoils from large portions of the MTW; as well as the conversion of deep/isolated pools into shallow, well-connected alcove and side channels; lowering of floodplain elevations; and enhancement and expansion of a network of perennially and seasonally inundated side channels. The grading limits are designed to target the existing swaths of disconnected and mostly barren cobble fields, and to avoid significant impacts to existing beneficial stands of vegetation. Select non-native invasive plants will be removed from the riparian floodplain, promoting native vegetation growth, while planting will be conducted in some areas. Existing riparian vegetation stands will be preserved as much as possible. Large wood material will provide a variety of geomorphic functions including scour protection, scour enhancement, sediment deposition and sorting, as well as habitat functions including structural cover and velocity refuge. The Project will be completed in phases.

Phase 1 of the Project is expected to be completed in one year and is limited to the area between the Middle and North training walls in the lower half of the site with topographical improvements at the inlet to the Secondary Channel (Figure 2). Phase 1 involves the removal of approximately 1,075,000 cubic yards of material, enhancement to approximately 90 acres of floodplain habitat, placement of approximately 1,200 cubic yards of woody material, and creation of nearly two miles of perennial side and alcove channels. Once in-water work commences dozers, front-end loaders, and haul trucks will fill deep pools and ponds with the nearest source material. In order to process the removed material, conveyor belts will be extended from the southern side of the Teichert Hallwood Processing Plant out onto the dry floodplain areas of the site. A team of front-end loaders, will then load material from the floodplain and training walls onto the conveyor belts for the harvest of coarse sediment. Larger cobbles will be screened on-site from local training wall material to form design features within the Secondary Channel.

Phases 2, 3 and 4 will occur over several years. Phase 2 involves the removal of approximately 844,000 cubic yards of material from the MTW and surrounding point bar at the upper end of the site and enhancement of 35 acres of floodplain habitat. Phase 3 will remove approximately 825,000 cubic yards of MTW material and create 18 acres of floodplain habitat. Phase 4 will remove approximately 390,000 cubic yards of material and enhance approximately 23 acres. After completion of each construction season within each phase, the site will be left in a suitable condition to prevent mobilization and transport of sediment during the winter season. Conveyor belts and excavation equipment will be entirely removed from the river corridor every fall. All phases of work will require the construction of a temporary crossing to allow equipment to access the southern portion of the site.

The Project will enhance and create approximately 165 acres of floodplain habitats including approximately 122 acres of wetlands, two miles of perennial side and alcove channels, and more than six miles of seasonal side channels, alcoves, and sloughs (Figure 3).

No dewatering will occur within the Project area. No wet concrete will be placed into wetland, or stream channel habitat.

Total Project fill/excavation quantities for all impacts are summarized in Table 1. Permanent impacts are categorized as those resulting in a physical loss in area and also those degrading ecological condition.

Aquatic Resource Type	Temporary Impact <sup>1</sup>			Permanent Impact					
				Physical Loss of Area			Degradation of Ecological Condition		
	Acres	CY <sup>2</sup>	LF <sup>2</sup>	Acres	CY	LF	Acres	CY	LF
Wetland	11.56	-	-	0.23	52,000	145	-	-	-
Stream Channel	13.35	-	-	0.63	71,000	475	-	-	-

### VIII. Description of Indirect Impacts to Waters of the State – Not Applicable

#### IX. Avoidance and Minimization

Most work will be conducted on the dry floodplain. Any excavation adjacent to the main Yuba River Channel (e.g., to connect a side channel or to enhance an existing wetted side channel located topographically above the main river channel) will be conducted during an appropriate summer work window (e.g., 15 July to 15 October), and the area will be surveyed in advance to ensure species listed under the Endangered Species Act or other sensitive species are not present. Additional measures to avoid or minimize environmental impacts will include using existing roads and off-highway vehicle trails for vehicle travel where possible and inspecting and maintaining all equipment to avoid fluid leaks, etc.

Limited work will occur in the main channel of the Yuba River. Work will occur when Secondary Channel entrances and exits are excavated and a temporary stream crossing is in place. The temporary crossing will be removed at the end of each construction season. All equipment working within the river corridor will be inspected daily for fuel, lubrication, and coolant leaks; and for leak potentials (e.g., cracked hoses, loose filling caps, stripped drain plugs); and, all equipment used for the Project will be free of fuel, lubrication, and coolant leaks. Vehicles or equipment will be washed and/ or cleaned only at approved off-site areas. All equipment will be steam cleaned prior to working within the stream channel to remove contaminants that may enter the river and adjacent lands. All equipment will be fueled and lubricated in a designated staging area located outside the stream channel or banks, wetlands, and riparian corridors. A Stormwater Pollution Prevention Plan, including a Spill Prevention and Response Plan, will be developed as part of the Best Management Practice plan for the Project. All pertinent staff will be trained and familiarized with these plans. Copies of the plans and appropriate spill prevention equipment referenced in them will be made available at the site and staff will be trained in its use. Spill prevention kits will be in close proximity to construction areas, and workers will be trained in their proper use.

After floodplain grading activities have been completed, disturbed areas that contain fine sediment will be hydroseeded with native grass. Existing native trees with a diameter of at least 6 inches will be protected with appropriately sized buffers, to the extent possible.

<sup>1</sup> Includes only temporary direct impacts to waters of the state and does not include upland areas of temporary disturbance which could result in a discharge to waters of the state.

<sup>2</sup> Cubic Yards (CY); Linear Feet (LF)

As a precaution, mercury levels will be measured before, during, and after restoration activities in the Project area. Total mercury from sediments will be evaluated to ensure samples are below or within the range of background levels, as defined by Goldfield sediments analyzed for the Western Aggregate Reclamation Plan (0.03 mg/kg to 0.59 mg/kg). Aqueous raw total mercury will also be tested to ensure that it is below the California Toxics Rule for a drinking water source of 50 ng/L. If samples are found with mercury levels above established standards, work will be halted to assess contamination potential.

#### **X. Compensatory Mitigation**

No compensatory mitigation is required for permanent impacts because the restoration project results in a net increase of 121.79 acres to aquatic resources.

#### **XI. California Environmental Quality Act (CEQA)**

On 18 October 2017, Yuba County, as lead agency, adopted an Initial Study/Mitigated Negative Declaration (IS/MND) (State Clearinghouse (SCH) No. 2017102054) for the Project and filed a Notice of Determination (NOD) at the SCH on 6 December 2017. Pursuant to CEQA, the Central Valley Water Board has made Findings of Facts (Findings) which support the issuance of this Order and are included in Attachment C.

#### **XII. Petitions for Reconsideration**

Any person aggrieved by this action may petition the State Water Resources Control Board to reconsider this Order in accordance with California Code of Regulations, title 23, section 3867. A petition for reconsideration must be submitted in writing and received within 30 calendar days of the issuance of this Order.

#### **XIII. Fees Received**

An application fee deposit of \$200.00 was received on 6 November 2017.

The fee amount was determined as required by California Code of Regulations, title 23, sections 3833(b)(3) and 2200(a)(3), and was calculated as category D - Ecological Restoration and Enhancement Projects (fee code 85) with the dredge and fill fee calculator.

#### **XIV. Conditions**

The Central Valley Water Board has independently reviewed the record of the Project to analyze impacts to water quality and designated beneficial uses within the watershed of the Project. In accordance with this Order, the Permittee may proceed with the Project under the following terms and conditions:

##### **A. Authorization**

Impacts to waters of the state shall not exceed quantities shown in Table 1.

##### **B. Reporting and Notification Requirements**

The following section details the reporting and notification types and timing of submittals. Requirements for the content of these reporting and notification types are detailed in Attachment D, including specifications for photo and map documentation during the Project. Written reports and notifications must be submitted using the Reporting and Notification Cover Sheet located in Attachment D, which must be signed by the Permittee or an authorized representative.

The Permittee must submit all notifications, submissions, materials, data, correspondence, and reports in a searchable Portable Document Format (PDF). Documents less than 50 MB must be emailed to: [centralvalleysacramento@waterboards.ca.gov](mailto:centralvalleysacramento@waterboards.ca.gov). In the subject line



of the email, include the Central Valley Water Board Contact, Project name, and WDID. Documents that are 50 MB or larger must be transferred to a disk and mailed to the Central Valley Water Board Contact.

## 1. Project Reporting

- a. Monthly Reporting:** The Permittee must submit a Monthly Report to the Central Valley Water Board on the 1st day of each month beginning the month after the submittal of the Commencement of Construction Notification. Monthly reporting shall continue until the Central Valley Water Board issues a Notice of Project Complete Letter to the Permittee.

If no sampling is required, the Permittee shall submit a written statement stating, "No sampling was required" within two weeks of initiation of in-water construction, and every month thereafter.

- b. Annual Reporting:** The Permittee shall submit an Annual Report each year on the 1st day of February starting one year after the effective date of the Order. Annual reporting shall continue until a Notice of Project Complete Letter is issued to the Permittee.

## 2. Project Status Notifications

- a. Commencement of Construction:** The Permittee shall submit a Commencement of Construction Report at least seven (7) days prior to start of initial ground disturbance activities which includes the corresponding Waste Discharge Identification Number (WDID#) issued under the NPDES General Permit for Storm Water Discharges Associated with Construction and Land Disturbance Activities (Order No. 2009-0009-DWQ; NPDES No. CAS000002).

- b. Request for Notice of Completion of Discharges Letter:** The Permittee shall submit a Request for Notice of Completion of Discharges Letter following completion of active Project construction activities, including any required restoration and permittee-responsible mitigation. This request shall be submitted to the Central Valley Water Board staff within thirty (30) days following completion of all Project construction activities. Upon acceptance of the request, Central Valley Water Board staff shall issue a Notice of Completion of Discharges Letter to the Permittee which will end the active discharge period and associated annual fees.

- c. Request for Notice of Project Complete Letter:** The Permittee shall submit a Request for Notice of Project Complete Letter when construction and/or any post-construction monitoring is complete,<sup>3</sup> and no further Project activities will occur. This request shall be submitted to Central Valley Water Board staff within thirty (30) days following completion of all Project activities. Upon approval of the request, the Central Valley Water Board staff shall issue a Notice of Project Complete Letter to the Permittee which will end the post discharge monitoring period and associated annual fees.

---

<sup>3</sup> Completion of post-construction monitoring shall be determined by Central Valley Water Board staff and shall be contingent on successful attainment of restoration and mitigation performance criteria.

**3. Conditional Notifications and Reports:** The following notifications and reports are required as appropriate.

**a. Accidental Discharges of Hazardous Materials<sup>4</sup>**

Following an accidental discharge of a reportable quantity of a hazardous material, sewage, or an unknown material, the following applies (Wat. Code, § 13271):

- i. As soon as (A) Permittee has knowledge of the discharge or noncompliance, (B) notification is possible, and (C) notification can be provided without substantially impeding cleanup or other emergency measures then:
  - first call – 911 (to notify local response agency)
  - then call – Office of Emergency Services (OES) State Warning Center at:(800) 852-7550 or (916) 845-8911
  - Lastly follow the required OES procedures as set forth in:  
[http://www.caloes.ca.gov/FireRescueSite/Documents/CalOES-Spill\\_Booklet\\_Feb2014\\_FINAL\\_BW\\_Acc.pdf](http://www.caloes.ca.gov/FireRescueSite/Documents/CalOES-Spill_Booklet_Feb2014_FINAL_BW_Acc.pdf)
- ii. Following notification to OES, the Permittee shall notify Central Valley Water Board, as soon as practicable (ideally within 24 hours). Notification may be delivered via written notice, email, or other verifiable means in accordance with section XIV.B.
- iii. Within five (5) working days of notification to the Central Valley Water Board, the Permittee must submit an Accidental Discharge of Hazardous Material Report.

**b. Violation of Compliance with Water Quality Standards:** The Permittee shall notify the Central Valley Water Board of any event causing a violation of compliance with water quality standards. Notification may be delivered via written notice, email, or other verifiable means in accordance with section XIV.B.

- i. This notification must be followed within three (3) working days by submission of a Violation of Compliance with Water Quality Standards Report.

**c. In-Water Work and Diversions**

- i. The Permittee shall notify the Central Valley Water Board at least forty-eight (48) hours prior to initiating work in water or stream diversions. Notification may be delivered via written notice, email, or other verifiable means in accordance with section XIV.B.
- ii. Within three (3) working days following completion of work in water or stream diversions, an In-Water Work/Diversions Water Quality Monitoring Report must be submitted to Central Valley Water Board staff.

---

<sup>4</sup> "Hazardous material" means any material that, because of its quantity, concentration, or physical or chemical characteristics, poses a significant present or potential hazard to human health and safety or to the environment if released into the workplace or the environment. "Hazardous materials" include, but are not limited to, hazardous substances, hazardous waste, and any material that a handler or the administering agency has a reasonable basis for believing that it would be injurious to the health and safety of persons or harmful to the environment if released into the workplace or the environment. (Health & Saf. Code, § 25501.)

**d. Modifications to Project**

Project modifications may require an amendment of this Order. The Permittee shall give advance notice to Central Valley Water Board staff if Project implementation as described in the application materials is altered in any way or by the imposition of subsequent permit conditions by any local, state or federal regulatory authority by submitting a Modifications to Project Report. The Permittee shall inform Central Valley Water Board staff of any Project modifications that will interfere with the Permittee's compliance with this Order. Notification may be made in accordance with conditions in the certification deviation section of this Order.

**e. Transfer of Property Ownership:** This Order is not transferable in its entirety or in part to any person or organization except after notice to the Central Valley Water Board in accordance with the following terms:

- i. The Permittee must notify the Central Valley Water Board of any change in ownership or interest in ownership of the Project area by submitting a Transfer of Property Ownership Report. The Permittee and purchaser must sign and date the notification and provide such notification to the Central Valley Water Board at least 10 days prior to the transfer of ownership. The purchaser must also submit a written request to the Central Valley Water Board to be named as the permittee in a revised order.
- ii. Until such time as this Order has been modified to name the purchaser as the permittee, the Permittee shall continue to be responsible for all requirements set forth in this Order.

**f. Transfer of Long-Term BMP Maintenance:** If maintenance responsibility for post-construction BMPs is legally transferred, the Permittee must submit to the Central Valley Water Board a copy of such documentation and must provide the transferee with a copy of a long-term BMP maintenance plan that complies with manufacturer or designer specifications. The Permittee must provide such notification to the Central Valley Water Board with a Transfer of Long-Term BMP Maintenance Report at least 10 days prior to the transfer of BMP maintenance responsibility.**C. Water Quality Monitoring**

1. **General:** Continuous visual surface water monitoring shall be conducted during active construction periods to detect accidental discharge of construction related pollutants (e.g. oil and grease, turbidity plume, or uncured concrete). The Permittee shall perform surface water sampling<sup>5</sup>:
  - a. when performing any in-water work;
  - b. during the entire duration of temporary surface water diversions;
  - c. in the event that the Project activities result in any materials reaching surface waters; or
  - d. when any activities result in the creation of a visible plume in surface waters.

---

<sup>5</sup> Sampling is not required in wetlands, where the entire wetland is being permanently filled; provided there is no outflow connecting the wetland to surface waters.

**2. Accidental Discharges/Noncompliance:** Upon occurrence of an accidental discharge of hazardous materials or a violation of compliance with a water quality standard, Central Valley Water Board staff may require water quality monitoring based on the discharge constituents and/or related water quality objectives and beneficial uses.

**3. In-Water Work or Diversions:**

During planned in-water work or during the entire duration of temporary water diversions, any discharge(s) to waters of the state shall conform to the following water quality standards:

- a. Waters shall not contain oils, greases, waxes, or other materials in concentrations that cause nuisance, result in a visible film or coating on the surface of the water or on objects in the water, or otherwise adversely affect beneficial uses.
- b. Activities shall not cause turbidity increases in surface water to exceed:
  - I. where natural turbidity is less than 1 Nephelometric Turbidity Units (NTUs), controllable factors shall not cause downstream turbidity to exceed 2 NTU;
  - II. where natural turbidity is between 1 and 5 NTUs, increases shall not exceed 1 NTU;
  - III. where natural turbidity is between 5 and 50 NTUs, increases shall not exceed 20 percent;
  - IV. where natural turbidity is between 50 and 100 NTUs, increases shall not exceed 10 NTUs;
  - V. where natural turbidity is greater than 100 NTUs, increases shall not exceed 10 percent.

In determining compliance with the above limits, appropriate averaging periods may be applied provided that beneficial uses will be fully protected. Averaging periods may only be used with prior permission of the Central Valley Water Board Executive Officer.

Sampling during in-water work or during the entire duration of temporary water diversions shall be conducted in accordance with Table 2 sampling parameters.<sup>6</sup> The sampling requirements in Table 2 shall be conducted upstream out of the influence of the Project, and approximately 300 feet downstream of the work area.

The sampling frequency may be modified for certain projects with written approval from Central Valley Water Board staff. An In-Water Work and Diversions Water Quality Monitoring Report, as described in Attachment D, shall be submitted within two weeks on initiation of in-water construction, and with every monthly report thereafter. In reporting the data, the Permittee shall arrange the data in tabular form so that the

---

<sup>6</sup> Pollutants shall be analyzed using the analytical methods described in 40 Code of Federal Regulations Part 136; where no methods are specified for a given pollutant, the method shall be approved by Central Valley Water Board staff. Grab samples shall be taken between the surface and mid-depth and not be collected at the same time each day to get a complete representation of variations in the receiving water. A hand-held field meter may be used, provided the meter utilizes a U.S. EPA-approved algorithm/method and is calibrated and maintained in accordance with the manufacturer's instructions. A calibration and maintenance log for each meter used for monitoring shall be maintained onsite.

sampling locations, date, constituents, and concentrations are readily discernible. The data shall be summarized in such a manner to illustrate clearly whether the Project complies with Order requirements. The report shall include surface water sampling results, visual observations, and identification of the turbidity increase in the receiving water applicable to the natural turbidity conditions specified in the turbidity criteria in XIV.C.3.d.

Parameter	Unit of Measurement	Type of Sample	Minimum Frequency
Oil and Grease	N/A	Visual	Continuous
Turbidity	NTU	Grab	Every 4 hours

- 4. Post-Construction:** Visually inspect the Project site during the rainy season for one year to ensure excessive erosion, stream instability, or other water quality pollution is not occurring in or downstream of the Project site. If water quality pollution is occurring, contact the Central Valley Water Board staff member overseeing the Project within three (3) working days. The Central Valley Water Board may require the submission of a Violation of Compliance with Water Quality Standards Report. Additional permits may be required to carry out any necessary site remediation.

#### **D. Standard**

1. This Order is subject to modification or revocation upon administrative or judicial review, including review and amendment pursuant to Water Code section 13330, and California Code of Regulations, title 23, chapter 28, Article 6 commencing with sections 3867-3869, inclusive. Additionally, the Central Valley Water Board reserves the right to suspend, cancel, or modify and reissue this Order, after providing notice to the Permittee, if the Central Valley Water Board determines that: the Project fails to comply with any of the conditions of this Order; or, when necessary to implement any new or revised water quality standards and implementation plans adopted or approved pursuant to the Porter-Cologne Water Quality Control Act (Wat. Code, § 13000 et seq.) or federal Clean Water Act section 303 (33 U.S.C. § 1313). For purposes of Clean Water Act section 401(d), the condition constitutes a limitation necessary to assure compliance with water quality standards and appropriate requirements of state law.
2. This Order is not intended and shall not be construed to apply to any activity involving a hydroelectric facility requiring a Federal Energy Regulatory Commission (FERC) license or an amendment to a FERC license, unless the pertinent certification application was filed pursuant to subsection 3855(b) of chapter 28, title 23 of the California Code of Regulations, and that application specifically identified that a FERC license or amendment to a FERC license for a hydroelectric facility was being sought.
3. This Order is conditioned upon total payment of any fee required under title 23 of the California Code of Regulations and owed by the Permittee.
4. In the event of any violation or threatened violation of the conditions of this Order, the violation or threatened violation shall be subject to any remedies, penalties, process, or sanctions as provided for under state and federal law. For purposes of Clean Water Act, section 401(d), the applicability of any state law authorizing remedies, penalties, processes, or sanctions for the violation or threatened violation constitutes a limitation necessary to assure compliance with the water quality standards and other pertinent requirements incorporated into this Order.

### E. General Compliance

1. Failure to comply with any condition of this Order shall constitute a violation of the Porter-Cologne Water Quality Control Act and the Clean Water Act. The Permittee and/or discharger may then be subject to administrative and/or civil liability pursuant to Water Code section 13385.
2. Permitted actions must not cause a violation of any applicable water quality standards, including impairment of designated beneficial uses for receiving waters as adopted in the Basin Plans by any applicable Central Valley Water Board or any applicable State Water Board (collectively Water Boards) water quality control plan or policy. The source of any such discharge must be eliminated as soon as practicable.
3. In response to a suspected violation of any condition of this Order, the Central Valley Water Board may require the holder of this Order to furnish, under penalty of perjury, any technical or monitoring reports the Water Boards deem appropriate, provided that the burden, including costs, of the reports shall bear a reasonable relationship to the need for the reports and the benefits to be obtained from the reports. The additional monitoring requirements ensure that permitted discharges and activities comport with any applicable effluent limitations, water quality standards, and/or other appropriate requirement of state law.
4. The Permittee must, at all times, fully comply with engineering plans, specifications, and technical reports submitted to support this Order; and all subsequent submittals required as part of this Order. The conditions within this Order and Attachments supersede conflicting provisions within Permittee submittals.
5. This Order and all of its conditions contained herein continue to have full force and effect regardless of the expiration or revocation of any federal license or permit issued for the Project. For purposes of Clean Water Act, section 401(d), this condition constitutes a limitation necessary to assure compliance with the water quality standards and other pertinent requirements of state law.
6. The Permittee shall adhere to all requirements in the mitigation monitoring and reporting program (MMRP) (include title and date of MMRP) which is incorporated herein by reference and any additional measures as outlined in Attachment C, CEQA Findings of Fact.
7. **Construction General Permit Requirement.** The Permittee shall obtain coverage under the National Pollutant Discharge Elimination System (NPDES) General Permit for Storm Water Discharges Associated with Construction and Land Disturbance Activities Order No. 2009-0009-DWQ, as amended, for discharges to surface waters comprised of storm water associated with construction activity, including, but not limited to, demolition, clearing, grading, excavation, and other land disturbance activities of one or more acres, or where projects disturb less than one acre but are part of a larger common plan of development that in total disturbs one or more acres.

### F. Administrative

1. Signatory requirements for all document submittals required by this Order are presented in Attachment E of this Order.
2. This Order does not authorize any act which results in the taking of a threatened, endangered or candidate species or any act, which is now prohibited, or becomes prohibited in the future, under either the California Endangered Species Act (Fish & G. Code, §§ 2050-2097) or the federal Endangered Species Act (16 U.S.C. §§ 1531-

1544). If a “take” will result from any act authorized under this Order held by the Permittee, the Permittee must obtain authorization for the take prior to any construction or operation of the portion of the Project that may result in a take. The Permittee is responsible for meeting all requirements of the applicable endangered species act for the Project authorized under this Order.

3. The Permittee shall grant Central Valley Water Board staff, or an authorized representative (including an authorized contractor acting as a Water Board representative), upon presentation of credentials and other documents as may be required by law, permission to:
  - a. Enter upon the Project or compensatory mitigation site(s) premises where a regulated facility or activity is located or conducted, or where records are kept.
  - b. Have access to and copy any records that are kept and are relevant to the Project or the requirements of this Order.
  - c. Inspect any facilities, equipment (including monitoring and control equipment), practices, or operations regulated or required under this Order.
  - d. Sample or monitor for the purposes of assuring Order compliance.
4. A copy of this Order shall be provided to any consultants, contractors, and subcontractors working on the Project. Copies of this Order shall remain at the Project site for the duration of this Order. The Permittee shall be responsible for work conducted by its consultants, contractors, and any subcontractors.
5. A copy of this Order must be available at the Project site(s) during construction for review by site personnel and agencies. All personnel performing work on the Project shall be familiar with the content of this Order and its posted location at the Project site.

## **G. Construction**

1. **Dewatering – Not Applicable**
2. **Directional Drilling – Not Applicable**
3. **Dredging – Not Applicable**
4. **Fugitive Dust – Not Applicable**
5. **Good Site Management “Housekeeping”**
  - a. The Permittee shall develop and maintain onsite a project-specific Spill Prevention, Containment and Cleanup Plan outlining the practices to prevent, minimize, and/or clean up potential spills during construction of the Project. The Plan must detail the Project elements, construction equipment types and location, access and staging and construction sequence. The Plan must be made available to the Central Valley Water Board staff upon request.
  - b. Refueling of equipment within the floodplain or within 300 feet of the waterway is prohibited. If critical equipment must be refueled within 300 feet of the waterway, spill prevention and countermeasures must be implemented to avoid spills. Refueling areas shall be provided with secondary containment including drip pans and/or placement of absorbent material. No hazardous materials, pesticides, fuels, lubricants, oils, hydraulic fluids, or other construction-related potentially hazardous

substances should be stored within a floodplain or within 300 feet of a waterway. The Permittee must perform frequent inspections of construction equipment prior to utilizing it near surface waters to ensure leaks from the equipment are not occurring and are not a threat to water quality.

- c. All materials resulting from the Project shall be removed from the site and disposed of properly.

## **6. Hazardous Materials**

- a. The discharge of petroleum products, any construction materials, hazardous materials, pesticides, fuels, lubricants, oils, hydraulic fluids, raw cement, concrete or the washing thereof, asphalt, paint, coating material, drilling fluids, or other substances potentially hazardous to fish and wildlife resulting from or disturbed by project-related activities is prohibited and shall be prevented from contaminating the soil and/or entering waters of the state. In the event of a prohibited discharge, the Permittee shall comply with notification requirements in sections XIV.B.3.a and XIV.B.3.b.

## **7. Invasive Species and Soil Borne Pathogens – Not Applicable**

## **8. In-Water Work**

- a. Work in the streambed and wetlands shall occur during periods of no precipitation and no flow.

## **9. Post-Construction Storm Water Management – Not Applicable**

## **10. Roads – Not Applicable**

## **11. Sediment Control**

- a. Except for activities permitted by the United States Army Corps of Engineers under Section 404 of the Clean Water Act and/or Section 10 of the Rivers and Harbors Act, soil, silt, or other organic materials shall not be placed where such materials could pass into surface water or surface water drainage courses.
- b. Silt fencing, straw wattles, or other effective management practices must be used along the construction zone to minimize soil or sediment along the embankments from migrating into the waters of the state through the entire duration of the Project.
- c. The use of netting material (e.g., monofilament-based erosion blankets) that could trap aquatic dependent wildlife is prohibited within the Project area.

## **12. Special Status Species**

- a. If Valley elderberry longhorn beetle are discovered within 100 feet of the Project area, the Permittee shall implement the United States Fish and Wildlife Conservation Guidelines for the Valley Elderberry Longhorn Beetle dated 9 July 1999.

## **13. Stabilization/Erosion Control**

- a. All areas disturbed by Project activities shall be protected from washout and erosion.



- b. Hydroseeding shall be performed with California native seed mix.

#### **14. Storm Water**

- a. During the construction phase, the Permittee must employ strategies to minimize erosion and the introduction of pollutants into storm water runoff. These strategies must include the following:
  - i. The Permittee must comply with the Statewide Construction Storm Water Permit, including, but not limited to, preparation and implementation of a Storm Water Pollution Prevention Plan; and
  - ii. An effective combination of erosion and sediment control Best Management Practices (BMPs) must be implemented and adequately working prior to the rainy season and during all phases of construction.

#### **H. Site Specific**

Prior to construction activities, the Permittee shall submit, for Executive Officer approval, a sediment mercury monitoring plan which identifies sampling locations and frequency of sample collection. If the median concentration of mercury on fine grained sediments (grain size less than 63 microns) is greater than 0.1 mg/kg [dry weight], the Permittee shall submit for Executive Officer approval a mercury-contaminated sediment management plan. The plan shall describe actions the Permittee will implement to isolate, remove, and/or prevent downstream transport of mercury-contaminated sediments once flows are reestablished in the restoration areas. The Permittee is required to implement the plan upon Executive Officer approval.

#### **I. Total Maximum Daily Load (TMDL) – Not Applicable**

#### **J. Mitigation for Temporary Impacts**

The Permittee shall restore all areas of temporary impacts, including Project site upland areas, which could result in a discharge to waters of the state to pre-construction contours and conditions upon completion of construction activities.

#### **K. Compensatory Mitigation for Permanent Impacts – Not Applicable**

#### **L. Certification Deviation**

1. Minor modifications of Project locations or predicted impacts may be necessary as a result of unforeseen field conditions, necessary engineering re-design, construction concerns, or similar reasons. Some of these prospective Project modifications may have impacts on water quality. Some modifications of Project locations or predicted impacts may qualify as Certification Deviations as set forth in Attachment F. For purposes of this Certification, a "Certification Deviation" is a Project locational or impact modification that does not require an immediate amendment of the Order, because the Central Valley Water Board has determined that any potential water quality impacts that may result from the change are sufficiently addressed by the Order conditions and the CEQA Findings. After the termination of construction, this Order will be formally amended to reflect all authorized Certification Deviations and any resulting adjustments to the amount of water resource impacts and required compensatory mitigation amounts.
2. A Project modification shall not be granted a Certification Deviation if it warrants or necessitates changes that are not addressed by the Order conditions or the CEQA

environmental document such that the Project impacts are not addressed in the Project's environmental document or the conditions of this Order. In this case a supplemental environmental review and different Order will be required.

#### **XV. Water Quality Certification**

I hereby issue the Order for the Hallwood Side Channel and Floodplain Restoration, (WDID#5A58CR00140) certifying that as long as all of the conditions listed in this Order are met, any discharge from the referenced Project will comply with the applicable provisions of Clean Water Act sections 301 (Effluent Limitations), 302 (Water Quality Related Effluent Limitations), 303 (Water Quality Standards and Implementation Plans), 306 (National Standards of Performance), and 307 (Toxic and Pretreatment Effluent Standards).

This discharge is also regulated pursuant to State Water Board Water Quality Order No. 2003-0017-DWQ which authorizes this Order to serve as Waste Discharge Requirements pursuant to the Porter-Cologne Water Quality Control Act (Wat. Code, § 13000 et seq.).

Except insofar as may be modified by any preceding conditions, all Order actions are contingent on: (a) the discharge being limited and all proposed mitigation being completed in strict compliance with the conditions of this Order and the attachments to this Order; and, (b) compliance with all applicable requirements of Statewide Water Quality Control Plans and Policies, the Regional Water Boards' Water Quality Control Plans and Policies.

*Original Signed by Adam Laputz for*

\_\_\_\_\_  
Pamela C. Creedon  
Executive Officer  
Central Valley Regional Water Quality Control Board

14 December 2017

\_\_\_\_\_  
Date

<b>Attachment A</b>	Project Map
<b>Attachment B</b>	Receiving Waters, Impact, and Mitigation Information
<b>Attachment C</b>	CEQA Findings of Facts
<b>Attachment D</b>	Report and Notification Requirements
<b>Attachment E</b>	Signatory Requirements
<b>Attachment F</b>	Certification Deviation Procedures



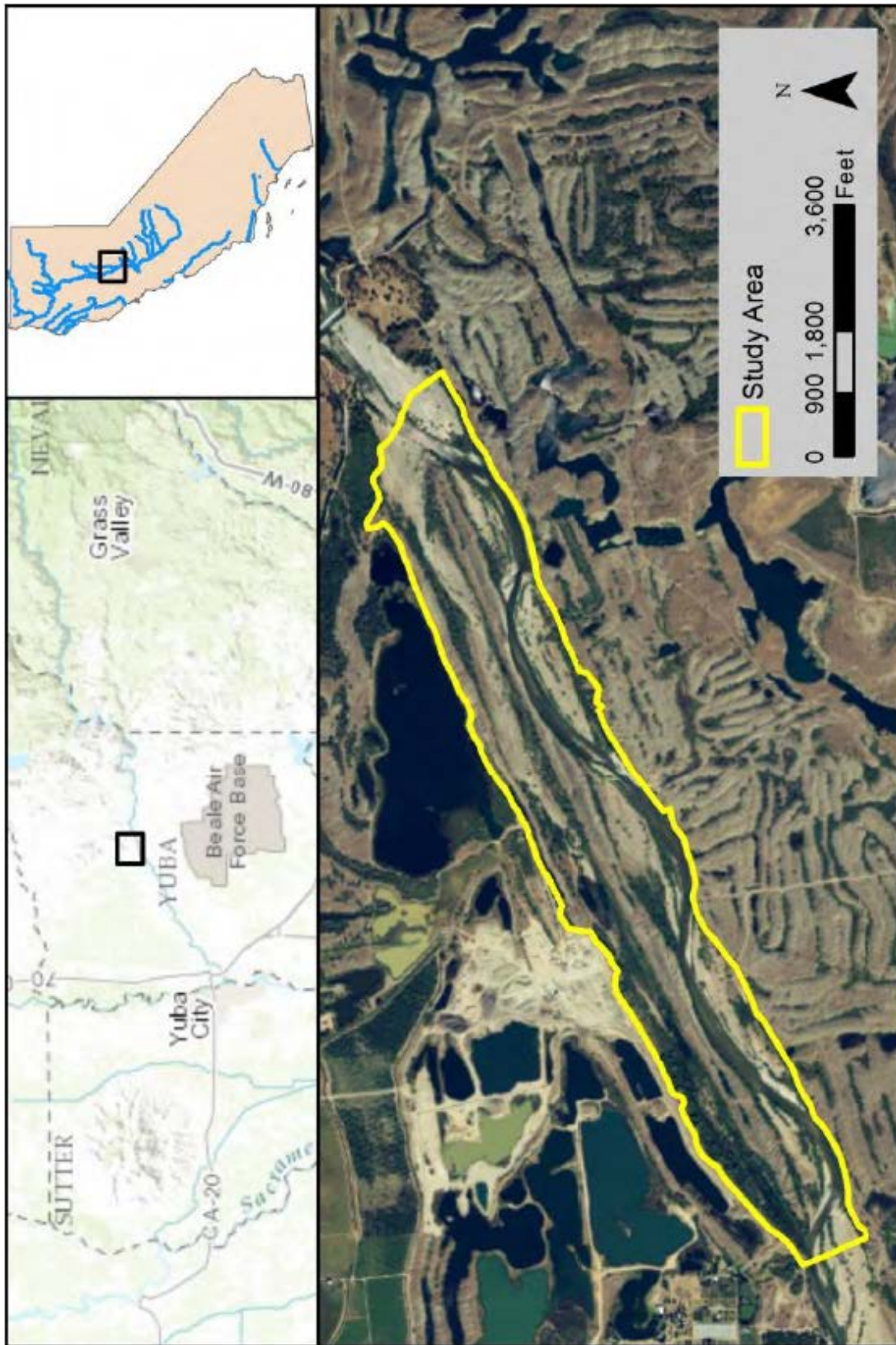


Figure 1: Project Vicinity Map



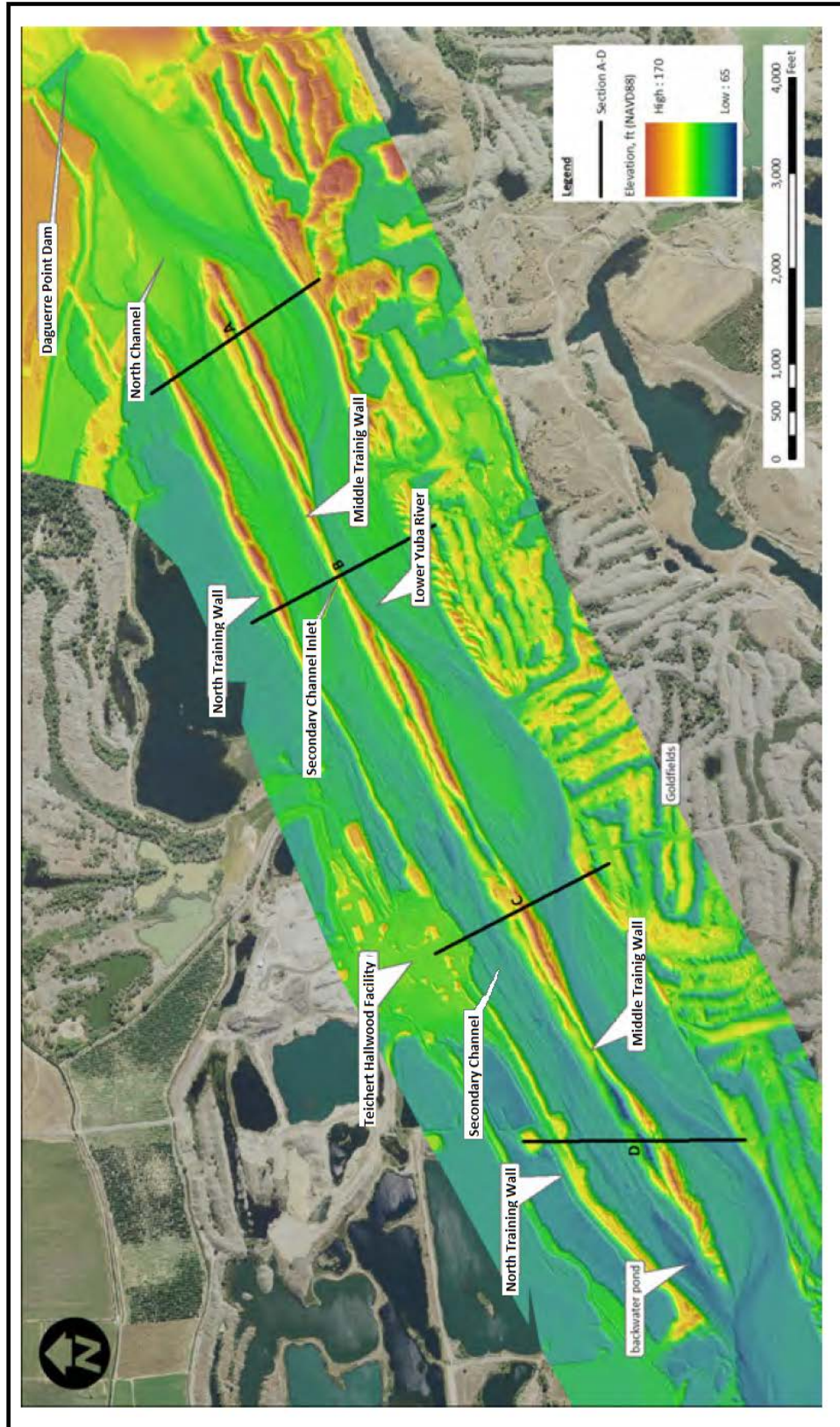
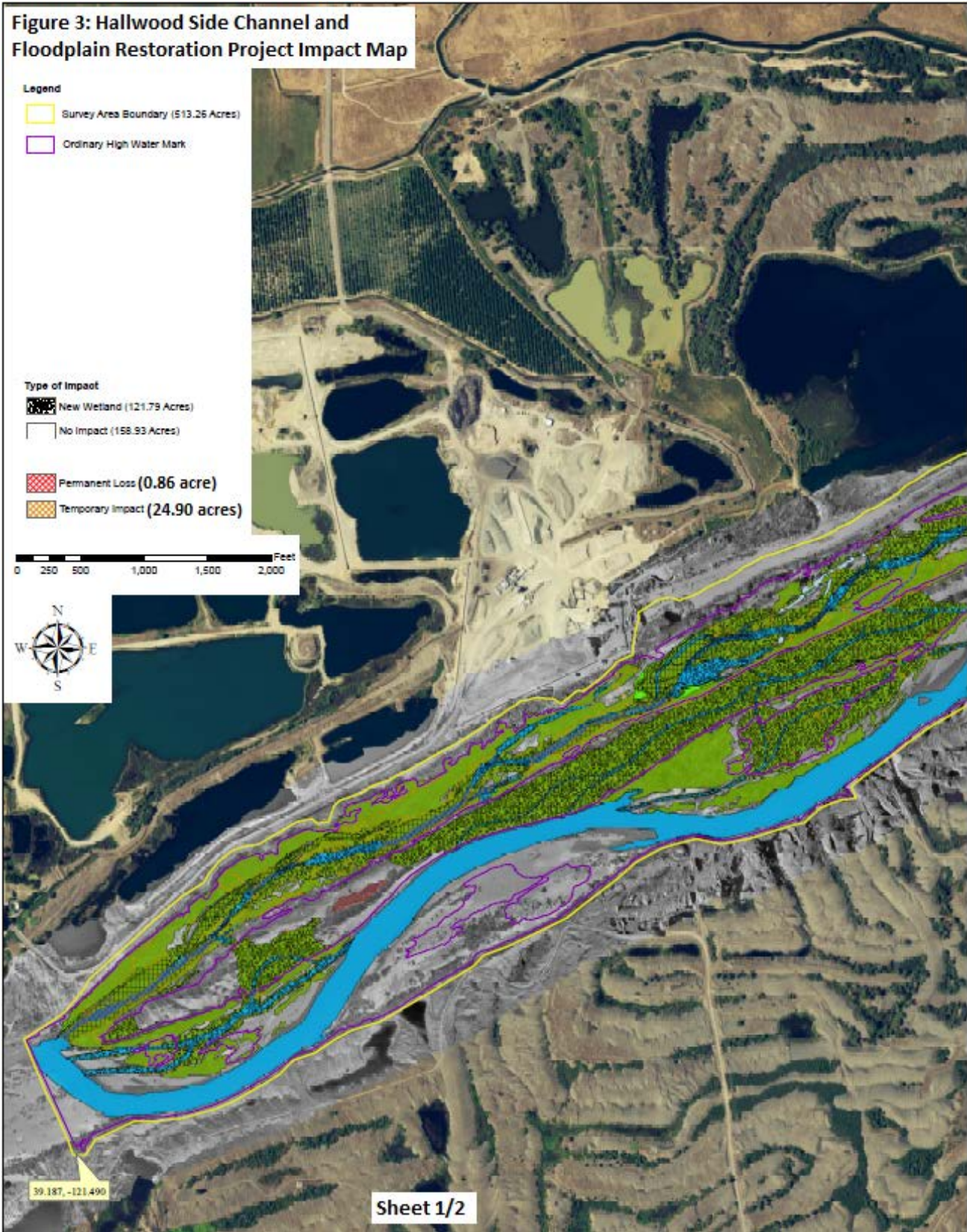
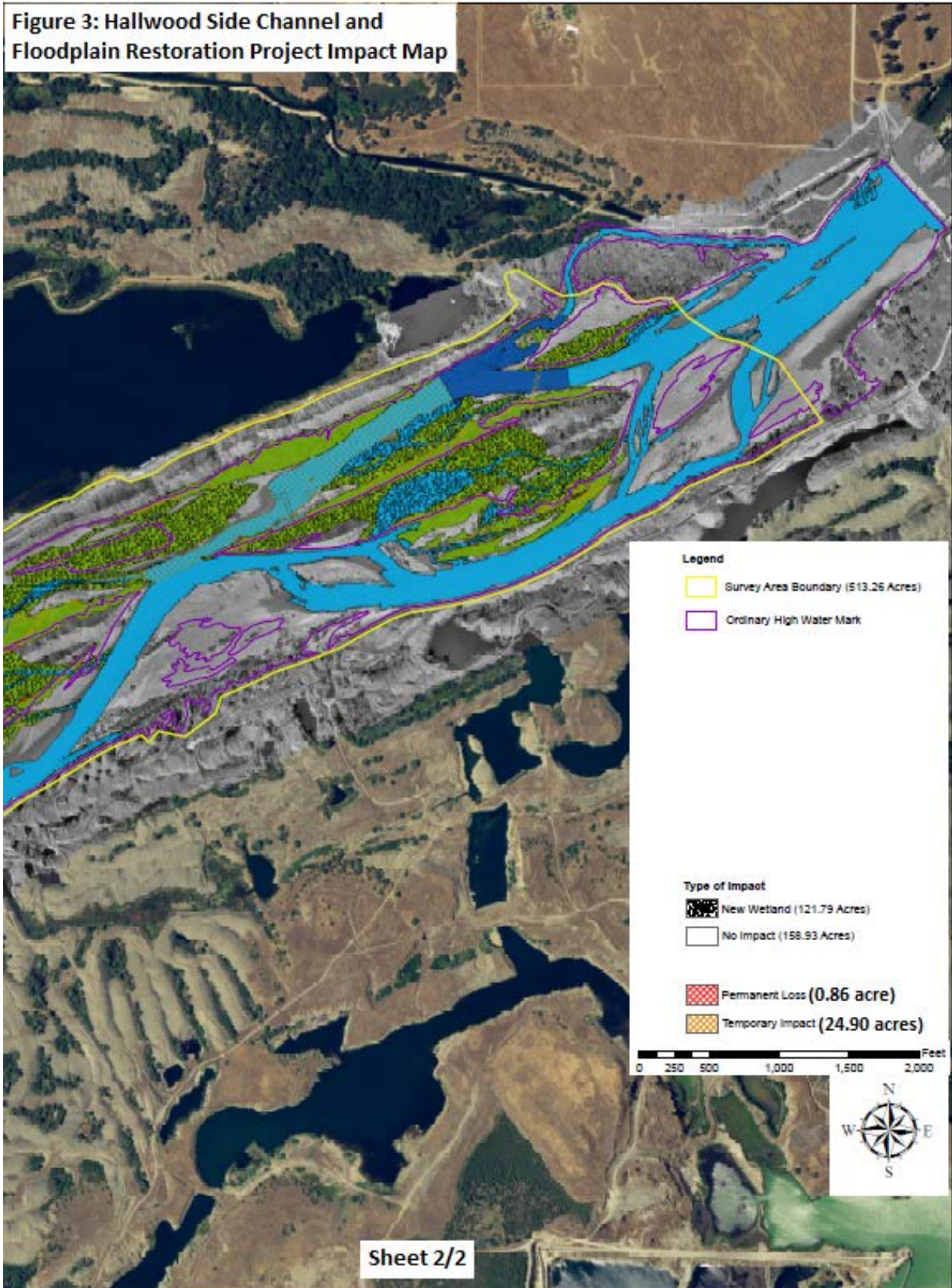


Figure 2: Project Locations













**Receiving Waters**

The following table shows the receiving waters associated with each impact site.

Table 1: Receiving Water(s) Information								
Non-Federal Waters	Impact Site ID	Waterbody Name	Impacted Aquatic Resource Type	Water Board Hydrologic Units	Receiving Waters	Receiving Waters Beneficial Uses	303d Listing Pollutant	eCRAM ID <sup>7</sup>
<input type="checkbox"/>	Site 1	Yuba River	Stream	515.30	Yuba River	AGR, POW, REC-1, REC-2, WARM, COLD, MIGR, SPWN, WILD	Mercury	N/A
<input type="checkbox"/>	Site 2	Yuba River	Wetland	515.30	Yuba River	AGR, POW, REC-1, REC-2, WARM, COLD, MIGR, SPWN, WILD	Mercury	N/A

**Individual Direct Impact Locations**

The following table shows individual impact locations.

Table 2: Individual Direct Impact Information											
Site ID	Latitude	Longitude	Indirect Impact Requiring Mitigation		Direct Impact Duration	Dredge			Fill/Excavation		
			Yes	No		Acres	Cubic Yards	Linear Feet	Acres	Cubic Yards	Linear Feet
1. Site 1	39°11'13.2"N	121°29'24.0"W	<input type="checkbox"/>	<input checked="" type="checkbox"/>	Temporary	-	-	-	13.35	-	-
					Permanent	-	-	-	0.63	71,000	475
2. Site 2	39°11'44.5"N	121°28'31.4"W	<input type="checkbox"/>	<input checked="" type="checkbox"/>	Temporary	-	-	-	11.56	-	-
					Permanent	-	-	-	0.23	52,000	145

<sup>7</sup> California Rapid Assessment Method (CRAM) score of impacted sites provided by the Permittee.



### **A. Environmental Review**

On 18 October 2017, the Yuba County, as lead agency, adopted an Initial Study/Mitigated Negative Declaration (IS/MND) (State Clearinghouse (SCH) No. 2017102054) for the Project and filed a Notice of Determination (NOD) at the SCH on 6 December 2017. The Central Valley Water Board is a responsible agency under CEQA (Pub. Resources Code, § 21069) and in making its determinations and findings, must presume that Yuba County's adopted environmental document complies with the requirements of CEQA and is valid. (Pub. Resources Code, § 21167.3.) The Central Valley Water Board has reviewed and considered the environmental document and finds that the environmental document prepared by Yuba County addresses the Project's water quality impacts. (Cal. Code Regs., tit. 14, § 15096, subd. (f).) The environmental document includes the mitigation monitoring and reporting program (MMRP) developed by Yuba County for all mitigation measures that have been adopted for the Project to reduce potential significant impacts. (Pub. Resources Code, § 21081.6, subd. (a)(1); Cal. Code Regs., tit. 14, § 15074, subd. (d).)

### **B. Incorporation by Reference**

Pursuant to CEQA, these Findings of Facts (Findings) support the issuance of this Order based on the Project IS/MND, the application for this Order, and other supplemental documentation.

All CEQA project impacts, including those discussed in subsection C below, are analyzed in detail in the Project Final IS/MND which is incorporated herein by reference. The Project IS/MND is available at: 915 8th Street, Suite 107 Marysville, CA 95901.

Requirements under the purview of the Central Valley Water Board in the MMRP are incorporated herein by reference.

The Permittee's application for this Order, including all supplemental information provided, is incorporated herein by reference.

### **C. Findings**

The IS/MND describes the potential significant environmental effects to water quality that were mitigated in the IS/MND. Having considered the whole of the record, including comments received during the public review process, the Central Valley Water Board makes the following findings:

- (1) *Revisions in the project plans or proposals made by, or agreed to by the applicant before a proposed mitigated negative declaration and initial study are released for public review would avoid the effects or mitigate the effects to a point where clearly no significant effects would occur, and*
- (2) *There is no substantial evidence, in light of the whole record before the agency, that the project as revised may have a significant effect on the environment. (Cal. Code Regs., tit. 14, § 15070.)*

a.i. Potential Significant Impact: Potential to expose clay and silt sized particles which have elevated mercury levels; Potential adverse effects to water quality; Potential adverse effects on suspended sediment load, or turbidity; Potential to discharge oils, grease, or any other material that would result in a film on the water; Potential adverse effects on special status species.

a.ii. Facts in Support of Finding: **Mitigation:** Following methods in the Stillwater Sciences (2004) Mercury Assessment, total mercury from sediments will be evaluated to ensure samples are below or within the range of background levels, as defined by Goldfield sediments analyzed for the Western Aggregate Reclamation Plan (0.03 mg/kg to 0.59 mg/kg). Aqueous raw total mercury will also be tested to ensure that it is below the California Toxics Rule for a drinking water source of 50 ng/L. If samples are found with mercury levels above established standards, work will be halted to assess contamination potential. Mercury levels will be measured before, during, and after restoration activities in the Proposed Project area. **Mitigation:** Monitor water quality and prevent impacts; during in river work, turbidity and total suspended solids will be monitored with intermittent grab samples from the river, and construction curtailed if turbidity exceeds criteria established by the Regional Water Quality Control Board in its Water Quality Certification. Only cobbles which have been screened and cleaned will be added to the Secondary Channel using front-end loaders. As appropriate, silt curtains will be used along the river corridor to capture floating materials or sediments mobilized during construction activities, and prevent water quality impacts. Stream bank impacts will be isolated and minimized to reduce bank sloughing. Banks will be stabilized with revegetation following Proposed Project activities, as appropriate. A Spill Prevention and Response Plan will also be developed as part of the Hallwood Best Management Practices Plan, as well as a Stormwater Pollution Prevention Plan. All pertinent staff will be trained on and familiarized with these plans. Copies of the plans and appropriate spill prevention equipment referenced in them will be made available at the site and staff will be trained in its use. **Mitigation:** Protect elderberry plants and special status plants with buffer; each year, before beginning construction activities, a special status plant survey will be conducted of the Project site. If elderberry shrubs are identified in subsequent surveys they will be avoided. Complete avoidance of elderberry plants may be assumed when there is at least a 100-foot buffer around the plant. However, 20-foot buffers will be established and maintained for all elderberry plants with stems measuring 1 in or greater in diameter at ground level which will be retained in situ. All buffer zones will be flagged and Project activities will be adjusted to ensure no activities occur in the buffer area, minimizing any negative effects on valley elderberry longhorn beetle. **Mitigation:** Transplant unavoidable elderberry plants to suitable location; a number of elderberry shrubs with ground-level stem diameter greater than 1 inch were identified within the affected area that cannot be avoided by the Proposed Project through use of buffers. These unavoidable elderberry shrubs will be transplanted to a restoration area following the U.S. Fish and Wildlife Service guidelines. These dormant elderberry plants will be transplanted into appropriately sized pre-dug holes in the restoration area using a front-end loader. All transplanted elderberry bushes will be transplanted in groupings and will be transplanted to areas designed to be between the 1.75 and 10 year return interval flow events and within 2 to 12 feet relative elevation of 2,000 cubic feet per second, which are the areas within the site which currently support elderberry plants.

#### D. Determination

The Central Valley Water Board has determined that the Project, when implemented in accordance with the MMRP and the conditions in this Order, will not result in any significant adverse water quality impacts. (Cal. Code Regs., tit. 14, § 15096, subd (h).) The Central Valley Water Board will file a NOD with the SCH within five (5) working days from the issuance of this Order. (Cal. Code Regs., tit. 14, § 15096, subd. (i).)



### Copies of this Form

In order to identify your project, it is necessary to include a copy of the Project specific Cover Sheet below with your report: please retain for your records. If you need to obtain a copy of the Cover Sheet you may download a copy of this Order as follows:

1. Go to: [http://www.waterboards.ca.gov/water\\_issues/programs/cwa401/certifications.shtml](http://www.waterboards.ca.gov/water_issues/programs/cwa401/certifications.shtml)
2. Find your Order in the table based on Applicant, Date, and Subject headers.

### Report Submittal Instructions

1. Check the box on the Report and Notification Cover Sheet next to the report or notification you are submitting.
  - **Part A (Annual Report):** This report will be submitted annually from the anniversary of Project effective date until a Notice of Project Complete Letter is issued.
  - **Part B (Project Status Notifications):** Used to notify the Central Valley Water Board of the status of the Project schedule that may affect Project billing.
  - **Part C (Conditional Notifications and Reports):** Required on a case by case basis for accidental discharges of hazardous materials, violation of compliance with water quality standards, notification of in-water work, or other reports.
2. Sign the Report and Notification Cover Sheet and attach all information requested for the Report Type.
3. **Electronic Report Submittal Instructions:**
  - Submit signed Report and Notification Cover Sheet and required information via email to: [centralvalleysacramento@waterboards.ca.gov](mailto:centralvalleysacramento@waterboards.ca.gov) and cc: [Nicholas.White@waterboards.ca.gov](mailto:Nicholas.White@waterboards.ca.gov)
  - Include in the subject line of the email:  
Subject: ATTN: Nicholas White; Reg. Measure ID: 416975\_Report

### Definition of Reporting Terms

1. **Active Discharge Period:** The active discharge period begins with the effective date of this Order and ends on the date that the Permittee receives a Notice of Completion of Discharges Letter or, if no post-construction monitoring is required, a Notice of Project Complete Letter. The Active Discharge Period includes all elements of the Project including site construction and restoration, and any Permittee responsible compensatory mitigation construction.
2. **Request for Notice of Completion of Discharges Letter:** This request by the Permittee to the Central Valley Water Board staff pertains to projects that have post construction monitoring requirements, e.g. if site restoration was required to be monitored for 5 years following construction. Central Valley Water Board staff will review the request and send a Completion of Discharges Letter to

the Permittee upon approval. This letter will initiate the post-discharge monitoring period and a change in fees from the annual active discharge fee to the annual post-discharge monitoring fee.

3. **Request for Notice of Project Complete Letter:** This request by the Permittee to the Central Valley Water Board staff pertains to projects that either have completed post-construction monitoring and achieved performance standards or have no post-construction monitoring requirements, and no further Project activities are planned. Central Valley Water Board staff will review the request and send a Project Complete Letter to the Permittee upon approval. Termination of annual invoicing of fees will correspond with the date of this letter.
4. **Post-Discharge Monitoring Period:** The post-discharge monitoring period begins on the date of the Notice of Completion of Discharges Letter and ends on the date of the Notice of Project Complete Letter issued by the Central Valley Water Board staff. The Post-Discharge Monitoring Period includes continued water quality monitoring or compensatory mitigation monitoring.
5. **Effective Date:** 14 December 2017.

### Map/Photo Documentation Information

When submitting maps or photos, please use the following formats.

1. **Map Format Information:**

Preferred map formats of at least 1:24000 (1" = 2000') detail (listed in order of preference):

- **GIS shapefiles:** The shapefiles must depict the boundaries of all project areas and extent of aquatic resources impacted. Each shape should be attributed with the extent/type of aquatic resources impacted. Features and boundaries should be accurate to within 33 feet (10 meters). Identify datum/projection used and if possible, provide map with a North American Datum of 1983 (NAD38) in the California Teale Albers projection in feet.
- **Google KML files** saved from Google Maps: My Maps or Google Earth Pro. Maps must show the boundaries of all project areas and extent/type of aquatic resources impacted. Include URL(s) of maps. If this format is used include a spreadsheet with the object ID and attributed with the extent/type of aquatic resources impacted.
- **Other electronic format** (CAD or illustration format) that provides a context for location (inclusion of landmarks, known structures, geographic coordinates, or USGS DRG or DOQQ). Maps must show the boundaries of all project areas and extent/type of aquatic resources impacted. If this format is used include a spreadsheet with the object ID and attributed with the extent/type of aquatic resources impacted.
- Aquatic resource maps marked on paper **USGS 7.5 minute topographic maps** or **Digital Orthophoto Quarter Quads (DOQQ)** printouts. Maps must show the boundaries of all project areas and extent/type of aquatic resources impacted. If this format is used include a spreadsheet with the object ID and attributed with the extent/type of aquatic resources impacted.

2. **Photo-Documentation:** Include a unique identifier, date stamp, written description of photo details, and latitude/longitude (in decimal degrees) or map indicating location of photo. Successive photos should be taken from the same vantage point to compare pre/post construction conditions.

**REPORT AND NOTIFICATION COVER SHEET**

<b>Project:</b>	Hallwood Side Channel and Floodplain Restoration Project		
<b>Permittee:</b>	U.S. Fish and Wildlife Service		
<b>Reg. Meas. ID:</b>	416975	<b>Place ID:</b>	841407
<b>WDID:</b>	5A58CR00140	<b>Construction Storm Water General Permit WDID#:</b>	_____
<b>Order Effective Date:</b>	12 December 2017		
<b>Order Expiration Date:</b>	11 December 2022		

**Report Type Submitted**

**Part A – Project Reporting**

<b>Report Type 1</b>	<input type="checkbox"/> <b>Monthly Report #</b> _____
<b>Report Type 2</b>	<input type="checkbox"/> <b>Annual Report #</b> _____

**Part B - Project Status Notifications**

<b>Report Type 3</b>	<input type="checkbox"/> <b>Commencement of Construction</b>
<b>Report Type 4</b>	<input type="checkbox"/> <b>Request for Notice of Completion of Discharges Letter</b>
<b>Report Type 5</b>	<input type="checkbox"/> <b>Request for Notice of Project Complete Letter</b>

**Part C - Conditional Notifications and Reports**

<b>Report Type 6</b>	<input type="checkbox"/> <b>Accidental Discharge of Hazardous Material Report</b>
<b>Report Type 7</b>	<input type="checkbox"/> <b>Violation of Compliance with Water Quality Standards Report</b>
<b>Report Type 8</b>	<input type="checkbox"/> <b>In-Water Work/Diversions Water Quality Monitoring Report</b>
<b>Report Type 9</b>	<input type="checkbox"/> <b>Modifications to Project Report</b>
<b>Report Type 10</b>	<input type="checkbox"/> <b>Transfer of Property Ownership Report</b>
<b>Report Type 11</b>	<input type="checkbox"/> <b>Transfer of Long-Term BMP Maintenance Report</b>



"I certify under penalty of law that I have personally examined and am familiar with the information submitted in this document and all attachments and that, based on my inquiry of those individuals immediately responsible for obtaining the information, I believe that the information is true, accurate, and complete. I am aware that there are significant penalties for submitting false information, including the possibility of fine and imprisonment."

Print Name <sup>1</sup>

Affiliation and Job Title

Signature

Date

**<sup>1</sup>STATEMENT OF AUTHORIZATION (include if authorization has changed since application was submitted)**

I hereby authorize \_\_\_\_\_ to act in my behalf as my representative in the submittal of this report, and to furnish upon request, supplemental information in support of this submittal.

\_\_\_\_\_  
Permittee's Signature

\_\_\_\_\_  
Date

**\*This Report and Notification Cover Sheet must be signed by the Permittee or a duly authorized representative and included with all written submittals.**

**Part A – Project Reporting**

<b>Report Type 1</b>	<b>Monthly Report</b>
<b>Report Purpose</b>	Notifies Central Valley Water Board staff of the Project status and environmental compliance activities on a monthly basis.
<b>When to Submit</b>	On the 1st day of each month beginning the month after the submittal of the Commencement of Construction Notification until a Notice of Project Complete Letter is issued to the Permittee.
<b>Report Contents</b>	<p><b>1. Construction Summary</b> Describe Project progress and schedule including initial ground disturbance, site clearing and grubbing, road construction, site construction, and the implementation status of construction storm water Best Management Practices (BMPs<sup>8</sup>). If construction has not started, provide estimated start date.</p> <p><b>2. Event Summary</b> Describe distinct Project activities and occurrences, including environmental monitoring, surveys, and inspections.</p> <p><b>3. Photo Summary</b> Provide photos of Project activities. For each photo, include a unique site identifier, date stamp, written description of photo details, and latitude/longitude (in decimal degrees) or map indicating location of photo. Successive photos should be taken from the same vantage point to compare pre/post construction conditions.</p> <p><b>4. Compliance Summary</b></p> <ul style="list-style-type: none"> <li>a) List name and organization of environmental surveyors, monitors, and inspectors involved with monitoring environmental compliance for the reporting period.</li> <li>b) List associated monitoring reports for the reporting period. Include sampling reports. If no sampling was required, a monitoring report must be submitted stated, "No sampling was required".</li> <li>c) Summarize observed incidences of non-compliance, compliance issues, minor problems, or occurrences.</li> <li>d) Describe each observed incidence in detail. List monitor name and organization, date, location, type of incident, corrective action taken (if any), status, and resolution.</li> </ul>

<sup>8</sup> Best Management Practices (BMPs) is a term used to describe a type of water pollution or environmental control.

<b>Report Type 2</b>	<b>Annual Report</b>
<b>Report Purpose</b>	Notify the Central Valley Water Board staff of Project status during both the active discharge and post-discharge monitoring periods.
<b>When to Submit</b>	Annual reports shall be submitted each year on the 1st day of February starting one year after the effective date of the Order. Annual reports shall continue until a Notice of Project Complete Letter is issued to the Permittee.
<b>Report Contents</b>	<p>The contents of the annual report shall include the topics indicated below for each project period. Report contents are outlined in Annual Report Topics below.</p> <p><b><u>During the Active Discharge Period</u></b></p> <ul style="list-style-type: none"> <li>• <b>Topic 1: Construction Summary</b></li> <li>• <b>Topic 2: Mitigation for Temporary Impacts Status</b></li> <li>• <b>Topic 3: Compensatory Mitigation for Permanent Impacts Status – Not Required</b></li> </ul> <p><b><u>During the Post-Discharge Monitoring Period</u></b></p> <ul style="list-style-type: none"> <li>• <b>Topic 2: Mitigation for Temporary Impacts Status</b></li> <li>• <b>Topic 3: Compensatory Mitigation for Permanent Impacts Status – Not Required</b></li> </ul>
<b>Annual Report Topics (1-3)</b>	
<b>Annual Report Topic 1</b>	<b>Construction Summary</b>
<b>When to Submit</b>	With the annual report during the Active Discharge Period.
<b>Report Contents</b>	<ol style="list-style-type: none"> <li>1. Project progress and schedule including initial ground disturbance, site clearing and grubbing, road construction, site construction, and the implementation status of construction storm water best management practices (BMPs). If construction has not started, provide estimated start date and reasons for delay.</li> <li>2. Map showing general Project progress.</li> <li>3. If applicable: <ol style="list-style-type: none"> <li>a. Summary of Conditional Notification and Report Types 6 and 7 (Part C below).</li> <li>b. Summary of Certification Deviations. See Certification Deviation Attachment for further information.</li> </ol> </li> </ol>

<b>Annual Report Topic 2</b>	<b>Mitigation for Temporary Impacts Status</b>
<b>When to Submit</b>	With the annual report during both the Active Discharge Period and Post-Discharge Monitoring Period.
<b>Report Contents</b>	<ol style="list-style-type: none"> <li>1. Planned date of initiation and map showing locations of mitigation for temporary impacts to waters of the state and all upland areas of temporary disturbance which could result in a discharge to waters of the state.</li> <li>2. If mitigation for temporary impacts has already commenced, provide a map and information concerning attainment of performance standards contained in the restoration plan.</li> </ol>
<b>Annual Report Topic 3</b>	<b>Compensatory Mitigation for Permanent Impacts Status</b>
<b>When to Submit</b>	Not Required
<b>Report Contents</b>	<p><b>*If not applicable report N/A.</b></p> <p><b>Part A. Permittee Responsible</b></p> <ol style="list-style-type: none"> <li>1. Planned date of initiation of compensatory mitigation site installation.</li> <li>2. If installation is in progress, a map of what has been completed to date.</li> <li>3. If the compensatory mitigation site has been installed, provide a final map and information concerning attainment of performance standards contained in the compensatory mitigation plan.</li> </ol> <p><b>Part B. Mitigation Bank or In-Lieu Fee</b></p> <ol style="list-style-type: none"> <li>1. Status or proof of purchase of credit types and quantities.</li> <li>2. Include the name of bank/ILF Program and contact information.</li> <li>3. If ILF, location of project and type if known.</li> </ol>

**Part B – Project Status Notifications**

<b>Report Type 3</b>	<b>Commencement of Construction</b>
<b>Report Purpose</b>	Notify Central Valley Water Board staff prior to the start of construction.
<b>When to Submit</b>	Must be received at least seven (7) days prior to start of initial ground disturbance activities.
<b>Report Contents</b>	<ol style="list-style-type: none"> <li>1. Date of commencement of construction.</li> <li>2. Anticipated date when discharges to waters of the state will occur.</li> <li>3. Project schedule milestones including a schedule for onsite compensatory mitigation, if applicable.</li> <li>4. Construction Storm Water General Permit WDID No.</li> </ol>

<b>Report Type 4</b>	<b>Request for Notice of Completion of Discharges Letter</b>
<b>Report Purpose</b>	Notify Central Valley Water Board staff that post-construction monitoring is required and that active Project construction, including any mitigation and permittee responsible compensatory mitigation, is complete.
<b>When to Submit</b>	Must be received by Central Valley Water Board staff within thirty (30) days following completion of all Project construction activities.
<b>Report Contents</b>	<ol style="list-style-type: none"> <li>1. Status of storm water Notice of Termination(s), if applicable.</li> <li>2. Status of post-construction storm water BMP installation.</li> <li>3. Pre- and post-photo documentation of all Project activity sites where the discharge of dredge and/or fill/excavation was authorized.</li> <li>4. Summary of Certification Deviation discharge quantities compared to initial authorized impacts to waters of the state, if applicable.</li> <li>5. An updated monitoring schedule for mitigation for temporary impacts to waters of the state and permittee responsible compensatory mitigation during the post-discharge monitoring period, if applicable.</li> </ol>

<b>Report Type 5</b>	<b>Request for Notice of Project Complete Letter</b>
<b>Report Purpose</b>	Notify Central Valley Water Board staff that construction and/or any post-construction monitoring is complete, or is not required, and no further Project activity is planned.
<b>When to Submit</b>	Must be received by Central Valley Water Board staff within thirty (30) days following completion of all Project activities.
<b>Report Contents</b>	<p><b>Part A: Mitigation for Temporary Impacts</b></p> <ol style="list-style-type: none"> <li>1. A report establishing that the performance standards outlined in the restoration plan have been met for Project site upland areas of temporary disturbance which could result in a discharge to waters of the state.</li> <li>2. A report establishing that the performance standards outlined in the restoration plan have been met for restored areas of temporary impacts to waters of the state. Pre- and post-photo documentation of all restoration sites.</li> </ol>

	<p><b>Part B: Permittee Responsible Compensatory Mitigation</b></p> <ol style="list-style-type: none"><li>3. A report establishing that the performance standards outlined in the compensatory mitigation plan have been met.</li><li>4. Status on the implementation of the long-term maintenance and management plan and funding of endowment.</li><li>5. Pre- and post-photo documentation of all compensatory mitigation sites.</li><li>6. Final maps of all compensatory mitigation areas (including buffers).</li></ol> <p><b>Part C: Post-Construction Storm Water BMPs</b></p> <ol style="list-style-type: none"><li>7. Date of storm water Notice of Termination(s), if applicable.</li><li>8. Report status and functionality of all post-construction BMPs.</li></ol>
--	--

**Part C – Conditional Notifications and Reports**

<b>Report Type 6</b>	<b>Accidental Discharge of Hazardous Material Report</b>
<b>Report Purpose</b>	Notifies Central Valley Water Board staff that an accidental discharge of hazardous material has occurred.
<b>When to Submit</b>	Within five (5) working days following the date of an accidental discharge. Continue reporting as required by Central Valley Water Board staff.
<b>Report Contents</b>	<ol style="list-style-type: none"> <li>1. The report shall include the OES Incident/Assessment Form, a full description and map of the accidental discharge incident (i.e. location, time and date, source, discharge constituent and quantity, aerial extent, and photo documentation). If applicable, the OES Written Follow-Up Report may be substituted.</li> <li>2. If applicable, any required sampling data, a full description of the sampling methods including frequency/dates and times of sampling, equipment, locations of sampling sites.</li> <li>3. Locations and construction specifications of any barriers, including silt curtains or diverting structures, and any associated trenching or anchoring.</li> </ol>

<b>Report Type 7</b>	<b>Violation of Compliance with Water Quality Standards Report</b>
<b>Report Purpose</b>	Notifies Central Valley Water Board staff that a violation of compliance with water quality standards has occurred.
<b>When to Submit</b>	The Permittee shall report any event that causes a violation of water quality standards within three (3) working days of the noncompliance event notification to Central Valley Water Board staff.
<b>Report Contents</b>	The report shall include: the cause; the location shown on a map; and the period of the noncompliance including exact dates and times. If the noncompliance has not been corrected, include: the anticipated time it is expected to continue; the steps taken or planned to reduce, eliminate, and prevent reoccurrence of the noncompliance; and any monitoring results if required by Central Valley Water Board staff.

<b>Report Type 8</b>	<b>In-Water Work and Diversions Water Quality Monitoring Report</b>
<b>Report Purpose</b>	Notifies Central Valley Water Board staff of the start and completion of in-water work. Reports the sampling results during in-water work and during the entire duration of temporary surface water diversions.
<b>When to Submit</b>	Forty-eight (48) hours prior to the start of in-water work. Within three (3) working days following the completion of in-water work. Surface water monitoring reports to be submitted two (2) weeks on initiation of in-water construction and during entire duration of temporary surface water diversions. Continue reporting in accordance with the approved water quality monitoring plan or as indicated in XIV.C.3.
<b>Report Contents</b>	As required by the approved water quality monitoring plan or as indicated in XIV.C.3.

<b>Report Type 9</b>	<b>Modifications to Project Report</b>
<b>Report Purpose</b>	Notifies Central Valley Water Board staff if the Project, as described in the application materials, is altered in any way or by the imposition of subsequent permit conditions by any local, state or federal regulatory authority.
<b>When to Submit</b>	If Project implementation as described in the application materials is altered in any way or by the imposition of subsequent permit conditions by any local, state or federal regulatory authority.
<b>Report Contents</b>	A description and location of any alterations to Project implementation. Identification of any Project modifications that will interfere with the Permittee's compliance with the Order.

<b>Report Type 10</b>	<b>Transfer of Property Ownership Report</b>
<b>Report Purpose</b>	Notifies Central Valley Water Board staff of change in ownership of the Project or Permittee-responsible mitigation area.
<b>When to Submit</b>	At least 10 working days prior to the transfer of ownership.
<b>Report Contents</b>	<ol style="list-style-type: none"> <li>1. A statement that the Permittee has provided the purchaser with a copy of this Order and that the purchaser understands and accepts: <ol style="list-style-type: none"> <li>a. the Order's requirements and the obligation to implement them or be subject to administrative and/or civil liability for failure to do so; and</li> <li>b. responsibility for compliance with any long-term BMP<sup>9</sup> maintenance plan requirements in this Order.</li> </ol> </li> <li>2. A statement that the Permittee has informed the purchaser to submit a written request to the Central Valley Water Board to be named as the permittee in a revised order.</li> </ol>

<b>Report Type 11</b>	<b>Transfer of Long-Term BMP Maintenance Report</b>
<b>Report Purpose</b>	Notifies Central Valley Water Board staff of transfer of long-term BMP maintenance responsibility.
<b>When to Submit</b>	At least 10 working days prior to the transfer of BMP maintenance responsibility.
<b>Report Contents</b>	A copy of the legal document transferring maintenance responsibility of post-construction BMPs.

---

<sup>9</sup> Best Management Practices (BMPs) is a term used to describe a type of water pollution or environmental control.





## SIGNATORY REQUIREMENTS

*All Documents Submitted In Compliance With This Order  
Shall Meet The Following Signatory Requirements:*

1. All applications, reports, or information submitted to the Central Valley Water Quality Control Board (Central Valley Water Board) must be signed and certified as follows:
  - a) For a corporation, by a responsible corporate officer of at least the level of vice-president.
  - b) For a partnership or sole proprietorship, by a general partner or proprietor, respectively.
  - c) For a municipality, or a state, federal, or other public agency, by either a principal executive officer or ranking elected official.
2. A duly authorized representative of a person designated in items 1.a through 1.c above may sign documents if:
  - a) The authorization is made in writing by a person described in items 1.a through 1.c above.
  - b) The authorization specifies either an individual or position having responsibility for the overall operation of the regulated activity.
  - c) The written authorization is submitted to the Central Valley Water Board Staff Contact prior to submitting any documents listed in item 1 above.
3. Any person signing a document under this section shall make the following certification:

“I certify under penalty of law that I have personally examined and am familiar with the information submitted in this document and all attachments and that, based on my inquiry of those individuals immediately responsible for obtaining the information, I believe that the information is true, accurate, and complete. I am aware that there are significant penalties for submitting false information, including the possibility of fine and imprisonment.”



## Certification Deviation Procedures

### Introduction

These procedures are put into place to preclude the need for Order amendments for minor changes in the Project routing or location. Minor changes or modifications in project activities are often required by the Permittee following start of construction. These deviations may potentially increase or decrease impacts to waters of the state. In such cases, a Certification Deviation, as defined in Section L of the Order, may be requested by the Permittee as set forth below:

### Process Steps

Who may apply: The Permittee or the Permittee's duly authorized representative or agent (hereinafter, "Permittee") for this Order.

How to apply: By letter or email to the 401 staff designated as the contact for this Order.

Certification Deviation Request: The Permittee will request verification from the Central Valley Water Board staff that the project change qualifies as a Certification Deviation, as opposed to requiring an amendment to the Order. The request should:

1. Describe the Project change or modification:
  - a. Proposed activity description and purpose;
  - b. Why the proposed activity is considered minor in terms of impacts to waters of the state;
  - c. How the Project activity is currently addressed in the Order; and,
  - d. Why a Certification Deviation is necessary for the Project.
2. Describe location (latitude/longitude coordinates), the date(s) it will occur, as well as associated impact information (i.e., temporary or permanent, federal or non-federal jurisdiction, water body name/type, estimated impact area, etc.) and minimization measures to be implemented.
3. Provide all updated environmental survey information for the new impact area.
4. Provide a map that includes the activity boundaries with photos of the site.
5. Provide verification of any mitigation needed according to the Order conditions.
6. Provide verification from the CEQA Lead Agency that the proposed changes or modifications do not trigger the need for a subsequent environmental document, an addendum to the environmental document, or a supplemental EIR. (Cal. Code Regs., tit. 14, §§ 15162-15164.)

Post-Discharge Certification Deviation Reporting:

1. Within 30 calendar days of completing the approved Certification Deviation activity, the Permittee will provide a post-discharge activity report that includes the following information:
  - a. Activity description and purpose;
  - b. Activity location, start date, and completion date;
  - c. Erosion control and pollution prevention measures applied;
  - d. The net change in impact area by water body type(s) in acres, linear feet and cubic yards;
  - e. Mitigation plan, if applicable; and,
  - f. Map of activity location and boundaries; post-construction photos.

Annual Summary Deviation Report:

1. Until a Notice of Completion of Discharges Letter or Notice of Project Complete Letter is issued, include in the Annual Project Report (see Construction Notification and Reporting attachment) a compilation of all Certification Deviation activities through the reporting period with the following information:
  - a. Site name(s).
  - b. Date(s) of Certification Deviation approval.
  - c. Location(s) of authorized activities.
  - d. Impact area(s) by water body type prior to activity in acres, linear feet and cubic yards, as originally authorized in the Order.
  - e. Actual impact area(s) by water body type in, acres, linear feet and cubic yards, due to Certification Deviation activity(ies).
  - f. The net change in impact area by water body type(s) in acres, linear feet and cubic yards;
  - g. Mitigation to be provided (approved mitigation ratio and amount).