



Central Valley Regional Water Quality Control Board

19 August 2025

Ryan Bonk
City of Portola
35 Third Street
Portola, CA 96122

**NOTICE OF APPLICABILITY: STATE WATER RESOURCES CONTROL BOARD
CLEAN WATER ACT SECTION 401 GENERAL WATER QUALITY CERTIFICATION
FOR REGIONAL GENERAL PERMIT 8 (ORDER WQ 2023-0061-DWQ), CITY OF
PORTOLA, GULLING STREET BRIDGE EMERGENCY REPAIR PROJECT, PLUMAS
COUNTY, WDID NO. 5A32CR00254**

This letter serves to notify the City of Portola the Gulling Street Bridge Emergency Repair Project (Project) is certified under State Water Resources Control Board's Clean Water Act Section 401 General Water Quality Certification for Regional General Permit 8 for Emergency Repair and Protection Activities (General Order; Order WQ 2023-0061-DWQ). The project site is located at approximate latitude 39.8091 and longitude -120.4686 in Plumas County, California.

This Notice of Applicability (NOA) is being issued to the City of Portola (hereinafter Enrollee) by the Central Valley Regional Water Quality Control Board (Central Valley Water Board) under the General Order pursuant to Section 3838 of the California Code of Regulations. A copy of the General Order is enclosed and may also be accessed on [State Water Resources Control Board's General Orders Web Page](https://www.waterboards.ca.gov/water_issues/programs/cwa401/generalorders.html#yr_2023) (https://www.waterboards.ca.gov/water_issues/programs/cwa401/generalorders.html#yr_2023).

The Project must proceed in accordance with the requirements contained in this NOA and the General Order. The Project is described in the Notice of Intent requesting coverage and supplemental information (Application Package) submitted by the Enrollee and is limited to the impacts identified in the Application Package and described in this NOA. If the Project is modified from that described in the Application Package, then coverage under the General Order is no longer valid.

I. EMERGENCY WORK DESCRIPTION

The Enrollee is proposing emergency repair activities at Gulling Street Bridge (Bridge No. 09C0130) to address the active scour at Pier 3. Storms in early 2023 created intense runoff on the Middle Fork Feather River.

NICHOLAS AVDIS, CHAIR | PATRICK PULUPA, EXECUTIVE OFFICER

Gulling Street Bridge is 255 feet long, approximately 38 feet wide, and spans the Middle Fork Feather River. The river is a perennial feature and flows from east to west at the bridge location. The anticipated emergency stabilization actions will involve in-water work limited to the placement of rock slope protection (RSP) at the base of Pier 3 to prevent additional scour from compromising the footing and to restore stability to the foundation. The project area encompasses approximately 3.17 acres. Implementation of the emergency repair activities will require accessing Pier 3 from the south side of the river using a long-arm excavator (60-foot arm) to place RSP around Pier 3. Approximately 180 cubic yards of Class VII RSP and 46 cubic yards of Class III RSP will be placed directly adjacent to and beneath the exposed pier footing. The proposed in-water disturbance will be confined to a small portion of the river beneath Pier 3, approximately 10 to 15 feet in width across 44 linear feet, with localized scour repair materials potentially affecting up to 0.01 acre of streambed. RSP placement will not require equipment tracking through the wetted channel. All work will be conducted under low-flow conditions to minimize impacts to aquatic resources.

Construction access and staging will be limited to the bridge deck and adjacent upland road shoulders. No mature riparian vegetation will be removed, and channel disturbance will be restricted to the immediate scour repair area. Temporarily disturbed areas (i.e., site access and staging areas) will be stabilized upon completion of work. Of the 0.1-acre staging area, 0.031 acre (99.6 linear feet) is below the ordinary high water mark (OHWM).

II. DESCRIPTION OF DIRECT IMPACTS TO WATERS

Total Project fill/excavation quantities for all impacts are summarized in Tables 1 and 2. Permanent impacts are categorized as those resulting in a physical loss in area and those degrading ecological condition.

The project will result in a total of 0.041 acre of impacts to waters:

- Approximately 0.01-acre (44 linear feet) of aquatic resources in the Middle Fork Feather River will be permanently impacted. These impacts will result from installation of Class VII RSP (180 cubic yards) and Class III RSP (46 cubic yards).
- Approximately 0.031-acre (99.6 linear feet) of aquatic resources will be temporarily impacted from constructing a staging area on the south bank of the Middle Fork Feather River.

Table 1: Total Project Fill/Excavation Quantity for Temporary Impacts¹

Aquatic Resources Type	Acres	Cubic Yards	Linear Feet
Stream Channel	0.031		99.6

Table 2: Total Project Fill/Excavation Quantity for Permanent Physical Loss of Area Impacts

Aquatic Resources Type	Acres	Cubic Yards	Linear Feet
Stream Channel	0.01	226	44

III. COMPENSATORY MITIGATION

Compensatory mitigation is required for permanent physical loss and permanent ecological degradation of a water of the state. The Enrollee is required to provide compensatory mitigation for the authorized impact to 0.01 acre of stream channel by purchasing 0.01 acre stream channel credit from a U.S. Army Corps of Engineers approved mitigation bank or 0.01 aquatic resource credit from the National Fish and Wildlife Foundation's Sacramento District California In-Lieu Fee Program in the Feather Aquatic Resource Service Area.

Mitigation credits shall be purchased **within 90 days** of initiating the emergency project and prior to the Central Valley Water Board's approval of a Notice of Completion.

IV. REPORTING

The Enrollee must notify the Central Valley Water Board no less than forty-eight (48) hours prior to initiating the emergency project.

A Notice of Completion (NOC) shall be submitted by the Enrollee within 45 calendar days of completion of Project activities. The NOC shall demonstrate that the work has been carried out in accordance with the description provided in the Enrollee's Notice of Intent.

Failure to comply with the terms and conditions of this NOA may expose the Enrollee to enforcement action pursuant to the Clean Water Act and California Water Code.

¹ Includes only temporary direct impacts to waters of the state and does not include area of temporary disturbance which could result in a discharge to waters of the state. Temporary impacts, by definition, are restored to pre-project conditions and therefore do not include a physical loss of area or degradation of ecological condition.

**V. CENTRAL VALLEY REGIONAL WATER QUALITY CONTROL BOARD
CONTACT:**

If you have any questions regarding this Notice of Applicability, please contact Daniel Warner at (530) 224-4848 or Daniel.Warner@Waterboards.ca.gov.

Original Signed by Clint E. Snyder, AEO
For Patrick Pulupa, Executive Officer
Central Valley Regional Water Quality Control Board

8/19/2025
Date

DLW: db

Attachment A - Project Maps

Attachment B - Receiving Water, Impacts, and Mitigation Information

Enclosure: State Water Resources Control Board's Clean Water Act Section 401
General Water Quality Certification for Regional General Permit 8 for
Emergency Repair and Protection Activities (Order
WQ 2023-0061-DWQ)

cc via email: U.S. EPA, Region 9, San Francisco
Water Quality Certification Program, SWRCB, Sacramento
Hillary H. Regnart, U.S. Army Corps of Engineers, Sacramento District
Stephanie Gasca, Environmental Science Associates, Sacramento
Justin Whitfield, Environmental Science Associates, Oakland

(This page intentionally left blank)

Attachment A

Figure 1: Project Location Map



Figure 2. Project Vicinity Map

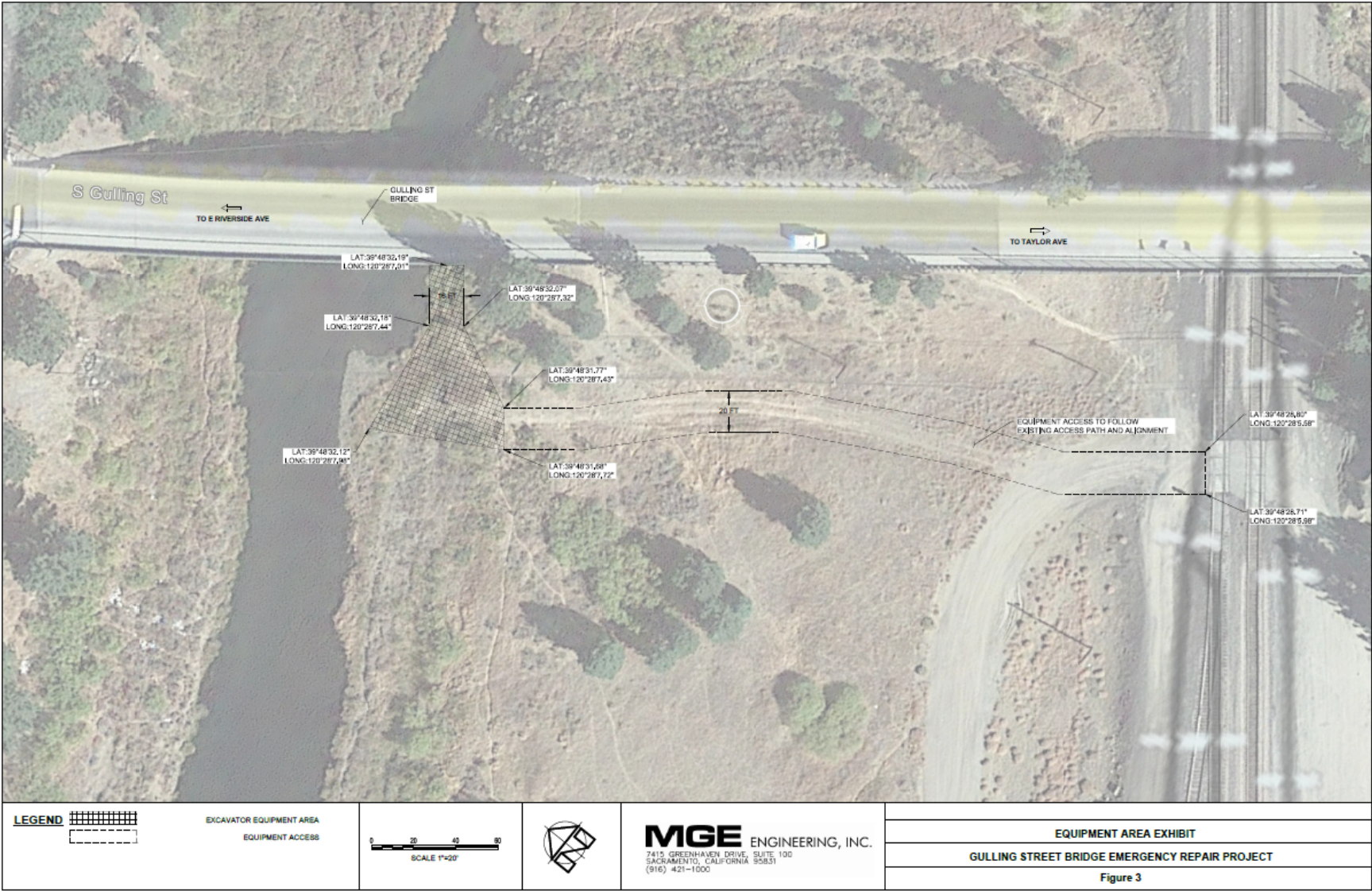
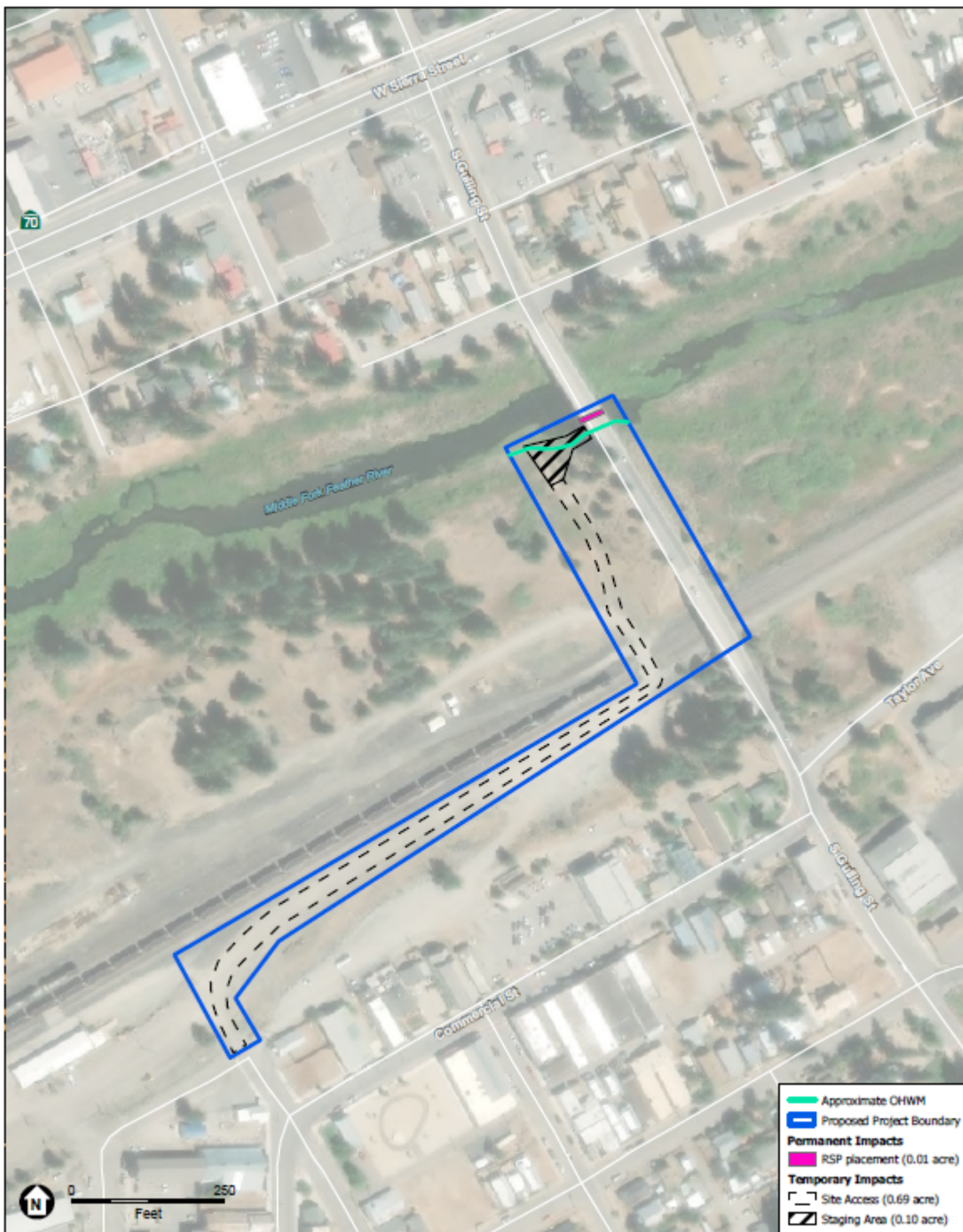


Figure 3. Water Quality Impacts Map



SOURCE: Maxar, 2025; ESRI, 2025; ESA, 2025

Gulling Street Bridge Emergency Repair

(This page intentionally left blank)

Receiving Waters, Impacts and Mitigation Information

The following table shows the receiving waters associated with each impact site.

Table 1: Receiving Waters Information

Site ID	Waterbody Name	Impacted Aquatic Resource Type	Water Board Hydrologic Units	Receiving Waters	Receiving Waters Beneficial Uses	303d Listing Pollutant	California Rapid Assessment Method (CRAM) ID
Gulling Street Bridge Emergency Repair Project	Middle Fork Feather River	River	518.33	Middle Fork Feather River	MUN, REC-1, REC-2, WARM, COLD, SPWN, WILD	Toxicity	Not Applicable

Individual Direct Impact Locations

The following tables show individual impacts.

Table 2: Individual Temporary Fill/Excavation Impact Information

Impact Site ID	Latitude	Longitude	Indirect Impact Requiring Mitigation?	Acres	Cubic Yards	Linear Feet
Gulling Street Bridge Emergency Repair Project	39.8091	-120.4686	No	0.031		99.6

Table 3: Individual Permanent Fill/Excavation Impact Information

Impact Site ID	Latitude	Longitude	Indirect Impact Requiring Mitigation?	Acres	Cubic Yards	Linear Feet
Gulling Street Bridge Emergency Repair Project	39.8091	-120.4686	No	0.01	226	44