
Central Valley Regional Water Quality Control Board

8 August 2025

Craig Geldard
Pacific Gas and Electric Co.
300 Lakeside Drive
Oakland, CA 94612
CxGr@pge.com

**NOTICE OF APPLICABILITY FOR COVERAGE UNDER ORDER NO. 2004-0004-DWQ,
STATEWIDE GENERAL WASTE DISCHARGE REQUIREMENTS FOR DREDGED OR
FILL DISCHARGES TO WATERS DEEMED BY THE U.S. ARMY CORPS OF
ENGINEERS TO BE OUTSIDE OF FEDERAL JURISDICTION, A-1076 L-197A MP
35.5149 EXPOSED PIPE MITIGATION PROJECT (WDID# 5B05CR00131),
CALAVERAS COUNTY**

On 19 June 2025, the Pacific Gas and Electric Company submitted a Notice of Intent (NOI) to enroll under and comply with State Water Resources Control Board (State Water Board) Order No. 2004-0004-DWQ, Statewide General Waste Discharge Requirements for Dredged or Fill Discharges to Waters Deemed by the United States Army Corps of Engineers to be Outside of Federal Jurisdiction.

The Central Valley Water Quality Control Board (Central Valley Water Board) has reviewed your enrollment materials and finds the A-1076 L-197A MP 35.5149 Exposed Pipe Mitigation Project (Project) meets the requirements of, and is hereby enrolled under, Order No. 2004-0004-DWQ. You may proceed with your Project in accordance with the Order.

A copy of [Order 2004-0004-DWQ](https://www.waterboards.ca.gov/board_decisions/adopted_orders/water_quality/2004/wqo/wqo2004-0004.pdf) (https://www.waterboards.ca.gov/board_decisions/adopted_orders/water_quality/2004/wqo/wqo2004-0004.pdf) can be found on the State Water Resources Control Board's Adopted Orders webpage and is enclosed.

Please familiarize yourself with the requirements of Order No. 2004-0004-DWQ. You are responsible for complying with all applicable Order requirements. Failure to comply with Order No. 2004-0004-DWQ constitutes a violation of the California Water Code and may result in enforcement action or termination of enrollment under the Order.

PROJECT DESCRIPTION:

The 0.27-acre Project consists of excavation to uncover a minimum length of nine (9) feet to perform the coating and repair per PG&E standards. The section of pipe will also

NICHOLAS AVDIS, CHAIR | PATRICK PULUPA, EXECUTIVE OFFICER

be wrapped in Rock-Shield, a physical protective wrap to allow backfill of native material. A sock filled with gravel will be installed for the safe discharge of groundwater at the toe of the slope. The eroded areas will then be backfilled with native fill and compacted. A layer of felt fabric will be laid down over the native, compacted soil that matches the existing grade. The final 4- to 6-inch of pipe will be backfilled with suitable drain rock. Class II rock slope protection (RSP) rock will be utilized over the pipeline and 6-inch Class II RSP rock will be utilized to stabilize the slope and toe of each location. Soil spoils generated while exposing the pipe will be reused as backfill. No spoils will be hauled off.

Project elements that affect aquatic resources include potential discharges of native soils for backfill. No contaminated soils will be discharged. The Project will permanently impact 0.00068 acre/67linear feet of streambed habitat.

PROJECT LOCATION:

The Project is located at Unincorporated Parcel 0.42 mi south of Hwy 12. Nearest Cross Street Highway 12. The approximate center of the Project area is located at latitude 38° 12' 21.42" and longitude -120° 45' 37.54".

PROJECT SCHEDULE:

11 August 2025 – 1 October 2025

APPLICATION FEE RECEIVED:

\$4,212.00 was received on 19 June 2025. The fee amount was determined as required by California Code of Regulations, title 23, sections 3833(b)(3) and 2200(a)(3) and was calculated as category E - Low Impact Discharges (fee code 87) with the dredge and fill fee calculator.

MITIGATION AND MINIMIZATION MEASURES:

You must implement the mitigation and minimization measures proposed in your Mitigation Plan.

1. Unavoidable temporary impacts will be mitigated by minimizing impacts to existing habitat and restoring the site to pre-discharge conditions as quickly as practicable. Construction site best management practices will be implemented during all phases of the project and an Erosion and Sediment Control Plan will be developed and implemented.
2. Biological Surveys and Monitoring: Contact the PG&E biologist at least two weeks prior to mobilization to schedule pre-construction surveys. A biologist will flag burrows and seasonal wetlands for avoidance. If work occurs March - August, a nesting bird survey will be conducted. Any nests with eggs or young will have appropriate buffers implement. A biologist is also required to be present during all initial ground disturbing activities.
3. Additional Avoidance and Minimization Measures: The project is located within PG&E's Multiple Region Operations and Maintenance Habitat Conservation Plan

(MRHCP) Area. All contractors and subcontractors must complete required HCP training via ENVR-0220WBT to work in the HCP Plan Area. Work activities must follow MRHCP Field Protocols (FP) and Best Management Practices (BMPs), and any additional measures, where identified in PG&E's Environmental Release to Construction (ERTC) documentation. If biological issues or concerns arise during work, please contact the project Biologist listed on the ERTC.

4. VELB-1 Valley Elderberry Longhorn Beetle All personnel, including PG&E employees and contractors, who are likely to encounter elderberry plants or valley elderberry longhorn beetle, especially during vegetation management activities, are required to receive training on valley elderberry longhorn beetle. When covered ground-disturbing activities will be implemented within 20 feet of elderberry, a qualified individual will identify a work exclusion zone (i.e., 5–20 feet of the dripline of all elderberry shrubs), with pin flagging or other appropriate means, within which ground disturbance, tree felling, and equipment and vehicle operation will be avoided or minimized. Except for cut stump treatment of removed trees (non elderberry), herbicides will not be used within this zone. When performing vegetation maintenance work in compliance with Public Resources Code Sections 4291–4293, pruning, rather than removal of elderberry plants, will be performed where feasible.
5. Wetland-1 Vernal Pool Species Conduct work during dry conditions Identify vernal pools and other aquatic habitat for covered aquatic invertebrates and amphibians and establish buffers. Maintain a buffer of 250 feet around vernal pools and vernal pool complexes. If maintaining the buffer is not practicable because the areas are either in or adjacent to facilities, the field crew will implement other measures as prescribed by the biologist to minimize impacts. These measures may include flagging access, requiring foot access, restricting work until the dry season, or requiring the presence of a biological monitor during the activity. Activities must maintain the downstream hydrology to the vernal pool or complex.
6. Wetland-2 Aquatic Invertebrates and Amphibians Conduct work during dry conditions. Identify wetlands, ponds, and riparian areas and establish and maintain a buffer of 50 feet around wetlands, ponds, and riparian areas. If maintaining the buffer is not practicable because the work sites are within any part of the buffered area, the field crew will implement other measures as prescribed by the biologist to minimize habitat impacts. These measures may include flagging access, requiring foot access, restricting work until the dry season, or requiring a biological monitor during the activity. Activities must maintain the hydrology necessary to support the wetland, pond, or riparian area (inclusive of downstream).
7. FP-11 Erosion and Sediment Control Utilize standard erosion and sediment control BMPs (pursuant to the most current version of PG&E's Stormwater Field Manual for Construction Best Management Practices) to prevent construction site runoff into waterways.

8 August 2025

TERMINATION OF COVERAGE:

Upon completion of the Project, you shall submit a complete Notice of Termination (NOT) requesting to be un-enrolled under Order No. 2004-0004-DWQ. Attachment 2 to the Order contains the NOT form.

If you have questions concerning this matter, please contact Sara Gevorgyan by phone at (916) 464-4710 or by email at Sara.Gevorgyan@waterboards.ca.gov.

Original Signed by Anne Walters for:

Patrick Pulupa
Executive Officer

Enclosure: State Water Resources Control Board Water Quality Order No.
2004-0004-DWQ

Attachments: Figure 1: Location Map
Figure 2: Site Map

cc: [Via email only]

United States Army Corps of Engineers
Sacramento District Office
Regulatory Division
SPKRegulatoryMailbox@usace.army.mil

Department of Fish and Wildlife, Region 2
R2LSA@wildlife.ca.gov

United States Environmental Protection Agency
R9CWA401@epa.gov

CWA Section 401 WQC Program
State Water Resources Control Board
Stateboard401@waterboards.ca.gov

CA Sportfishing Protection Alliance
DeltaKeep@me.com

Kat Lai
Senior Land Planner
Pacific Gas & Electric Co.
KMLI@pge.com

Doug Dattawalker
Pacific Gas & Electric Co.
D9DM@pge.com

Figure 1: Location Map

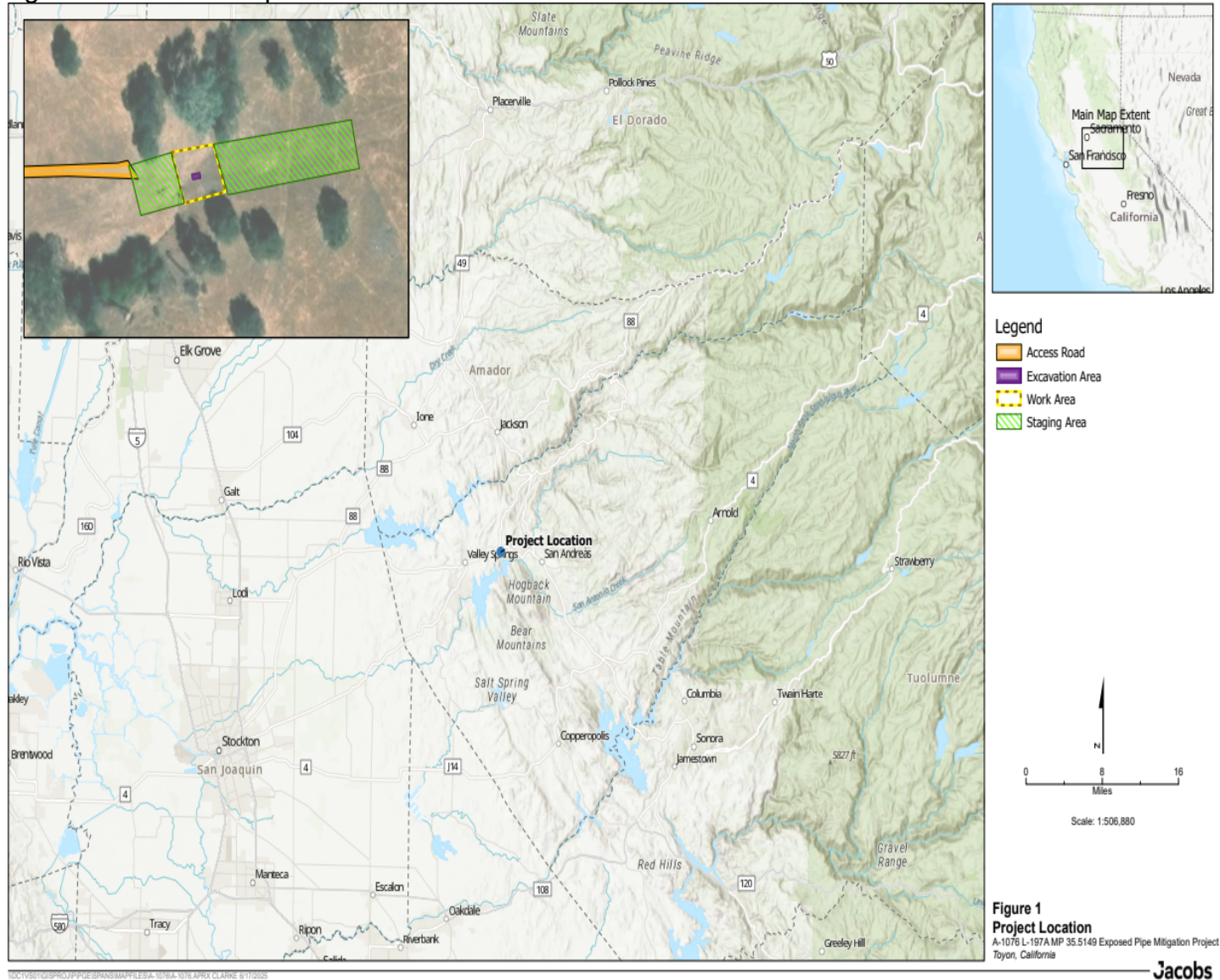


Figure 2: Site Map

