
Central Valley Regional Water Quality Control Board

8 August 2025

Erin Andrews
California Department of Water Resources
P.O. Box 942836
Sacramento, CA 94236
Erin.Andrews@water.ca.gov

NOTICE OF APPLICABILITY; GENERAL SECTION 401 WATER QUALITY CERTIFICATION ORDER REQUIREMENTS FOR THE CALIFORNIA DEPARTMENT OF WATER RESOURCES, SB-19/CALSIP – DELTA REGION: SOUTH DELTA MONITORING STATION INSTALLATION PROJECT (WDID#5B39CR00426), SAN JOAQUIN COUNTY

On 30 June 2025, the California Department of Water Resources (Applicant) filed a notification requesting coverage under the 25 February 2022 State Water Resources Control Board Clean Water Act Section 401 General Water Quality Certification and Order of the United States Army Corps of Engineers 2021 Nationwide Permits (General Certification Order) for the SB-19/CalSIP – Delta Region: South Delta Monitoring Station Installation Project (Project). After review of the notification and the supplemental material submitted by the Applicant, the Central Valley Regional Water Quality Control Board (Central Valley Water Board) has determined that the Project qualifies for enrollment under this General Certification Order. The proposed activity will take place within <0.005 acre/3 linear feet of waters of the United States.

The Central Valley Water Board is certifying this Project under United States Army Corps of Engineers Nationwide Permit #5 (Scientific Measurement Devices), subject to the conditions and the notification requirements described in the Nationwide Permit (“Special Conditions”). This Notice of Applicability is being issued under the General Certification Order pursuant to Section 3838 of the California Code of Regulations.

A copy of the [General Certification Order](https://www.waterboards.ca.gov/water_issues/programs/cwa401/docs/2021/certification-denial-corps-nationwide-permit-project-general-order-10122021.pdf) (https://www.waterboards.ca.gov/water_issues/programs/cwa401/docs/2021/certification-denial-corps-nationwide-permit-project-general-order-10122021.pdf) can be found on the State Water Resources Control Board’s General Order webpage and is enclosed.

The Project must proceed in accordance with the requirements contained in this Notice of Applicability and General Certification Order. The Project is described in the notification form requesting coverage under the General Certification Order, dated 30 June 2025, and supplementary information (Application Package). Coverage under

the General Certification Order is no longer valid if the Project (as described) is modified.

PROJECT DESCRIPTION:

The 5.74-acre Project consists of installing two water quality and flow monitoring stations located at Connection Slough and at Old River at Woodward Island in San Joaquin County. Each water quality station will consist of one 18-inch steel pile with water quality equipment mounted to it. Piles will be driven to a depth up to 40 feet using vibratory pile driving conducted from a barge.

The Project will permanently impact <0.005 acre/3 linear feet and temporarily impact 5.74 acres/1,000 linear feet of waters of the United States.

PROJECT LOCATION:

Connection Slough – Latitude: 38.0042119 and Longitude: -121.5308943

Old River at Woodward Island – Latitude: 37.936481 and Longitude: -121.561194

PROJECT SCHEDULE:

September 2026 – Work is anticipated to take approximately one week total.

APPLICATION FEE RECEIVED:

An application fee of \$ 4,212.00 was received on 7 July 2025.

The fee amount was determined as required by California Code of Regulations, title 23, sections 3833(b)(3) and 2200(a)(3), and was calculated as category E - Low Impact Discharges (fee code 87) with the dredge and fill fee calculator.

If you have any questions regarding this Notice of Applicability, please contact Jenna Yang by phone at (916) 464-4764 or by email at Jenna.Yang@waterboards.ca.gov.

Original Signed by Anne Walters for:

Patrick Pulupa
Executive Officer

Enclosure: State Water Board Certification of the 2021 Nationwide Permits General
Water Quality Certification and Order

Attachments: Figure 1 – Connection Slough Vicinity Site Map
Figure 2 – Connection Slough Plan View
Figure 3 – Old River at Woodward Island Vicinity Site Map
Figure 4 – Old river at Woodward Island Plan View

cc: Distribution List, page 3

DISTRIBUTION LIST [via e-mail only]

Kaitlyn Ames (SPK-2025-00310)
United States Army Corps of Engineers
Sacramento District Office
Regulatory Division
Kaitlyn.A.Ames@usace.army.mil
SPKRegulatoryMailbox@usace.army.mil

Department of Fish and Wildlife, Region 3
R3LSA@wildlife.ca.gov

United States Environmental Protection Agency
R9CWA401@epa.gov

CWA Section 401 WQC Program
State Water Resources Control Board
Stateboard401@waterboards.ca.gov

Malorie Sassman
CA Department of Water Resources
Malorie.Sassman@water.ca.gov

Richard McHenry
CA Sportfishing Protection Alliance
RMcHenry@calsport.org

Figure 1: Connection Slough Vicinity Site Map

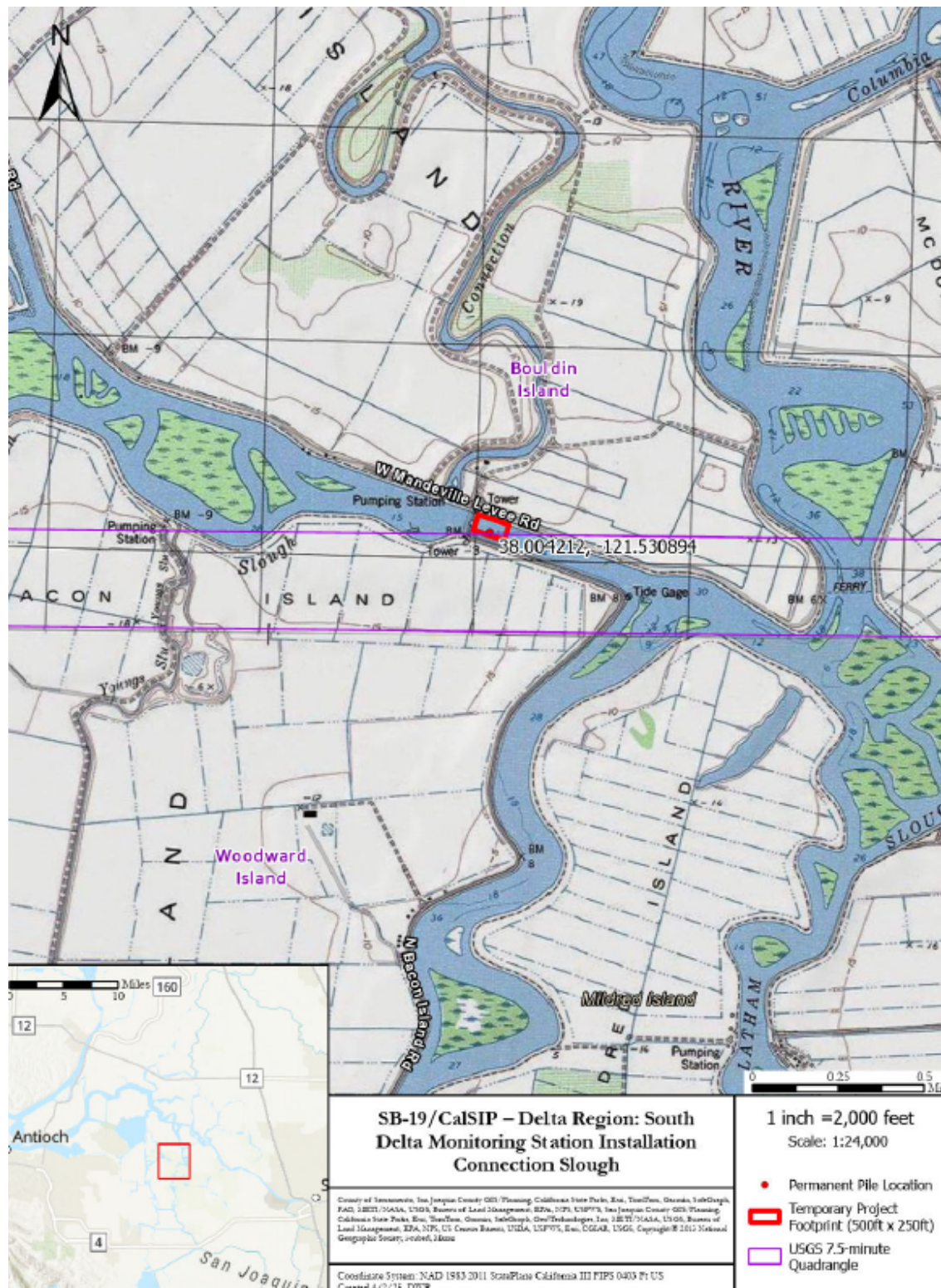


Figure 2: Connection Slough Plan View



Figure 3: Old River at Woodward Island Vicinity Site Map

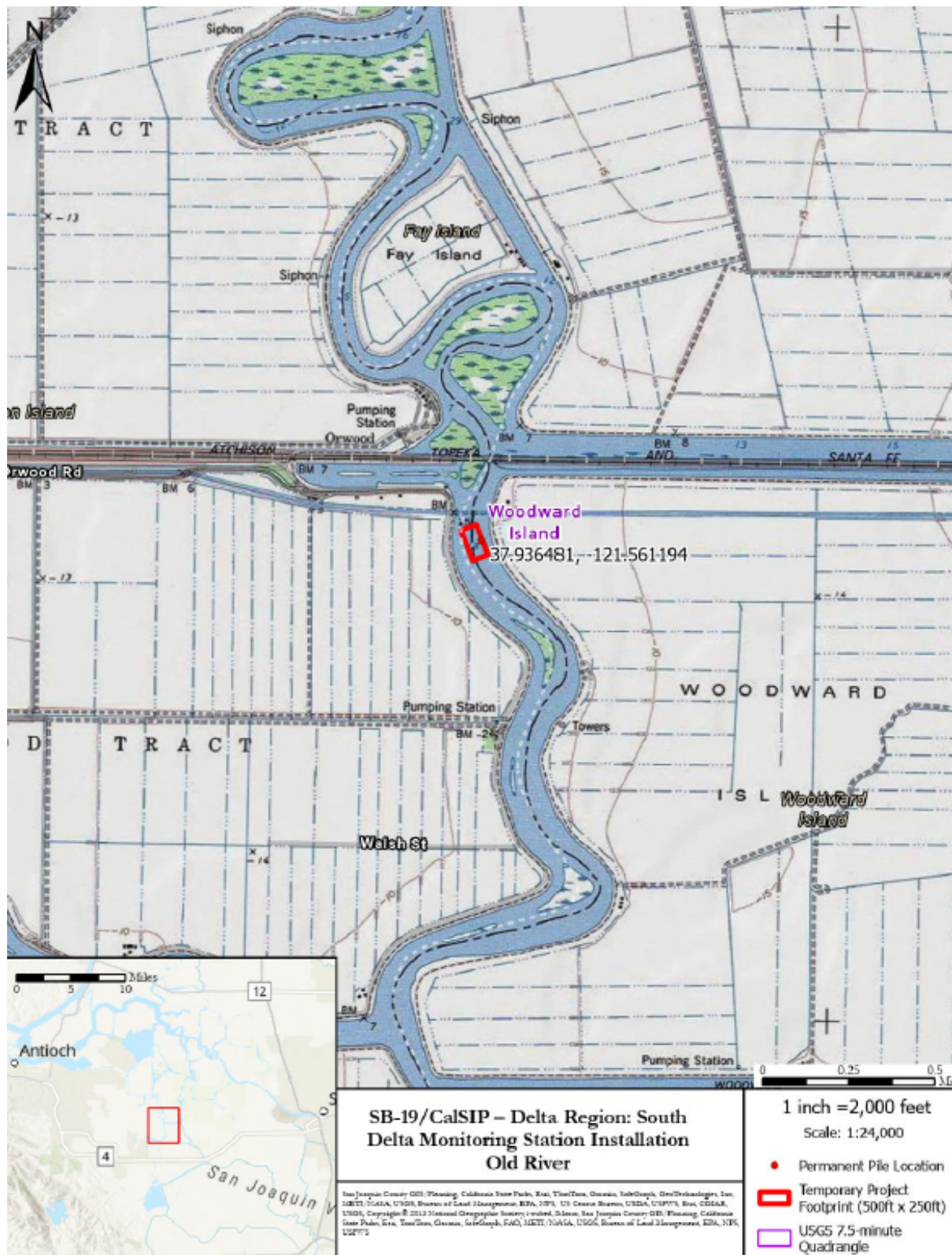


Figure 4: Old River at Woodward Island Plan View

