



Central Valley Regional Water Quality Control Board

19 May 2025

Department of Water Resources
Attn: Mohammed Shahid
Tisdale Bypass and Fish Passage Project
P.O. Box 942836
Sacramento, CA 95236-001

CERTIFIED MAIL
7022 2410 0002 2881 5156

NOTICE OF APPLICABILITY

**WATER QUALITY ORDER 2003-0003-DWQ
STATEWIDE WASTE DISCHARGE REQUIREMENTS FOR DISCHARGES TO LAND
WITH A LOW THREAT TO WATER QUALITY
DEPARTMENT OF WATER RESOURCES ,
TISDALE BYPASS AND FISH PASSAGE PROJECT
SUTTER COUNTY**

On 5 May 2025, the Department of Water Resources (DWR) submitted a Notice of Intent (NOI) to obtain coverage under Water Quality Order 2003-0003-DWQ, Statewide General Waste Discharge Requirements for Discharges to Land with a Low Threat to Water Quality (hereafter General Order) for construction dewatering. The May 2025 submittal contained all the information required to evaluate applicability of the General Order; therefore, the NOI is considered complete. Based on the information provided in the NOI, the discharge meets the conditions of the General Order. The discharge is hereby covered under State Water Resources Control Board (State Water Board) General Order and issued enrollee number 2003-0003-DWQ-0259. Please include this number on all correspondence related to this discharge.

PROJECT LOCATION AND DESCRIPTION

The project is located at 7467 Cranmore Road in Sutter County. The purpose of the project is to construct, operate, and maintain the Tisdale Weir Rehabilitation and Fish Passage Project which will integrate structural rehabilitation of the Tisdale Weir and installation of fish passage facilities to reduce fish stranding through the weir to the Sacramento River.

The contractor will excavate an area to create a channel for fish passage. Due to the vicinity of the Sacramento River causing seepage, the contractor will install temporary shallow dewatering wells to remove water during construction. The extracted water will be discharged to land within the Tisdale Bypass (Attachment A). The bypass will allow for continuous seepage such that none of the extracted water will enter the surface

NICHOLAS AVDIS, CHAIR | PATRICK PULUPA, EXECUTIVE OFFICER

water. There is no avenue for this water to return to the Sacramento River. The Contractor will continually monitor the discharge to ensure discharge flows continue to percolate. Any sign of flow moving outside of the discharge area, alternate methods such as a berm may be necessary to keep water within the discharge area.

The season of work is May through October and there will be 2 or 3 seasons of pumping. The total water discharged is expected to be 400 gallons per minute or approximately 576,000 gallons per day. As the river's elevation drops, this flow rate may drop significantly. No pollutants or contamination are expected from this discharge. The Tisdale Bypass (discharge area) accepts flood flows almost every year and completely dries for the remaining part of the season. No historical contamination has occurred in the bypass. Further, the bypass is regularly cleaned of sediment about every 10 years.

The Water Quality Control Plan for the Sacramento River and San Joaquin River Basins, Fifth Edition, revised May 2018 (hereafter Basin Plan), designates beneficial uses, establishes water quality objectives, contains implementation plans and policies for protecting waters of the basin, and incorporates by reference plans and policies adopted by the State Water Board. Pursuant to §13263(a) of the California Water Code, waste discharge requirements must implement the Basin Plan.

FACILITY-SPECIFIC REQUIREMENTS

The General Order and this NOA regulates the groundwater dewatering project for DWR's Tisdale Bypass and Fish Passage Project.

1. Water generated during construction dewatering shall be disposed of as described in the Notice of Intent, the DMP, and in accordance with the requirements contained in the General Order.
2. Construction dewatering discharge at a location or in a manner different from that described in the NOI or this NOA is prohibited
3. All technical reports required herein that involve evaluation, or other work requiring interpretation and proper application of engineering or geologic sciences, shall be prepared by or under the direction of persons registered to practice in California pursuant to California Business and Professions Code, section 6735, 7835, and 7835.1. As required by these laws, completed technical reports must bear the signature(s) and seal(s) of the registered professional(s) in a manner such that all work can be clearly attributed to the professional responsible for the work.
4. For construction dewatering, monitoring results shall be submitted on a semi-annual basis in accordance with the General Order's Monitoring and Reporting Program and the Discharger's DMP, which was included in the NOI. Semi-annual monitoring reports shall be submitted to the Central Valley Water Board on the **15th day of the second month following monitoring** (i.e. the January through June report is due August 15 and the July through December report is due

February 15). Monitoring shall include the approximate volume of discharge at each discharge location and date of each discharge (see the MRP included in the Order).

5. The Discharger shall submit the required annual fee (as specified in the annual billing issued by the State Water Board) until the NOA is officially terminated.
6. Failure to abide by the conditions of the General Order, including its monitoring and reporting requirements, and this letter authorizing applicability could result in enforcement actions, as authorized by provisions of the California Water Code

DOCUMENT SUBMITTALS

All monitoring reports and other correspondence should be converted to searchable Portable Document Format (PDF) and submitted electronically. Documents that are less than 50 MB should be emailed to: centralvalleysacramento@waterboards.ca.gov.

To ensure that your submittal is routed to the appropriate staff person, the following information should be included in the body of the email or any documentation submitted to the mailing address for this office:

Facility Name:	Tisdale Bypass and Fish Passage Project
Program:	Non-15 Compliance
Order:	WQO 2003-0003-DWQ-0259
CIWQS Place ID:	901149

Documents that are 50 MB or larger should be transferred to a CD, DVD, or flash drive and mailed to:

Central Valley Regional Water Quality Control Board
ECM Mailroom
11020 Sun Center Drive, Suite 200
Rancho Cordova, CA 95670

Now that the revised NOA has been issued, the Board's Compliance and Enforcement section will take over management of your case. Brendan Kenny is your point of contact for any questions about enrollment under the Order. All monitoring and technical reports should be submitted to him. The enclosed transmittal sheet shall be included with each monitoring report. If you find it necessary to make a change to your permitted operations, Brendan will direct you to the appropriate Permitting staff. You may contact Brendan at (916) 464-4635 or at Brendan.kenny@waterboards.ca.gov.

for Patrick Pulupa
Executive Officer

enclosures: Water Quality Order No. 2003-0003-DWQ
cc w/o encl: Sutter County Environmental Health Department

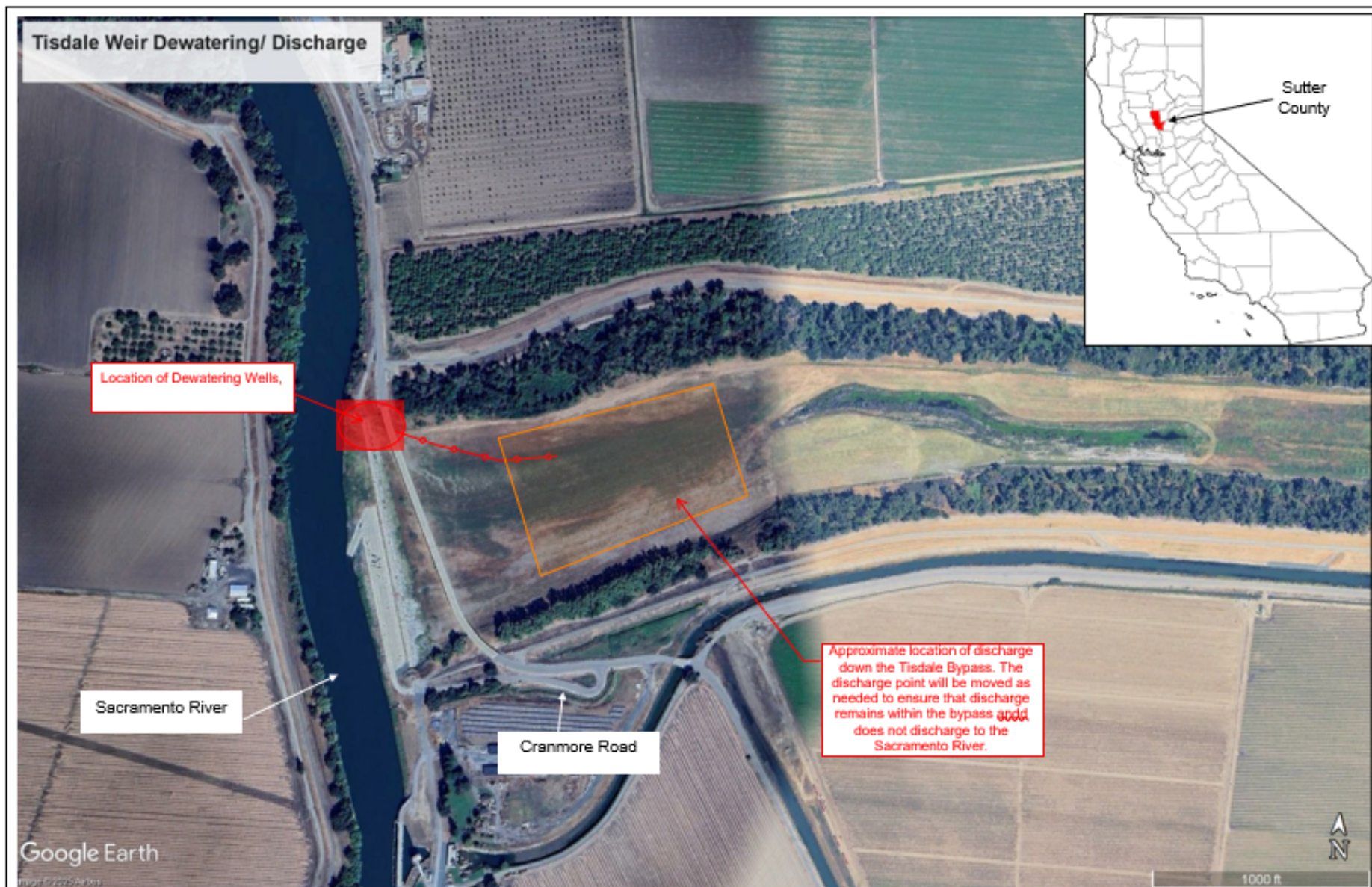


Figure Source: DWR's Notice of Intent

SITE LOCATION AND FEATURES MAP
TISDALE BYPASS AND FISH PASSAGE PROJECT
SUTTER COUNTY