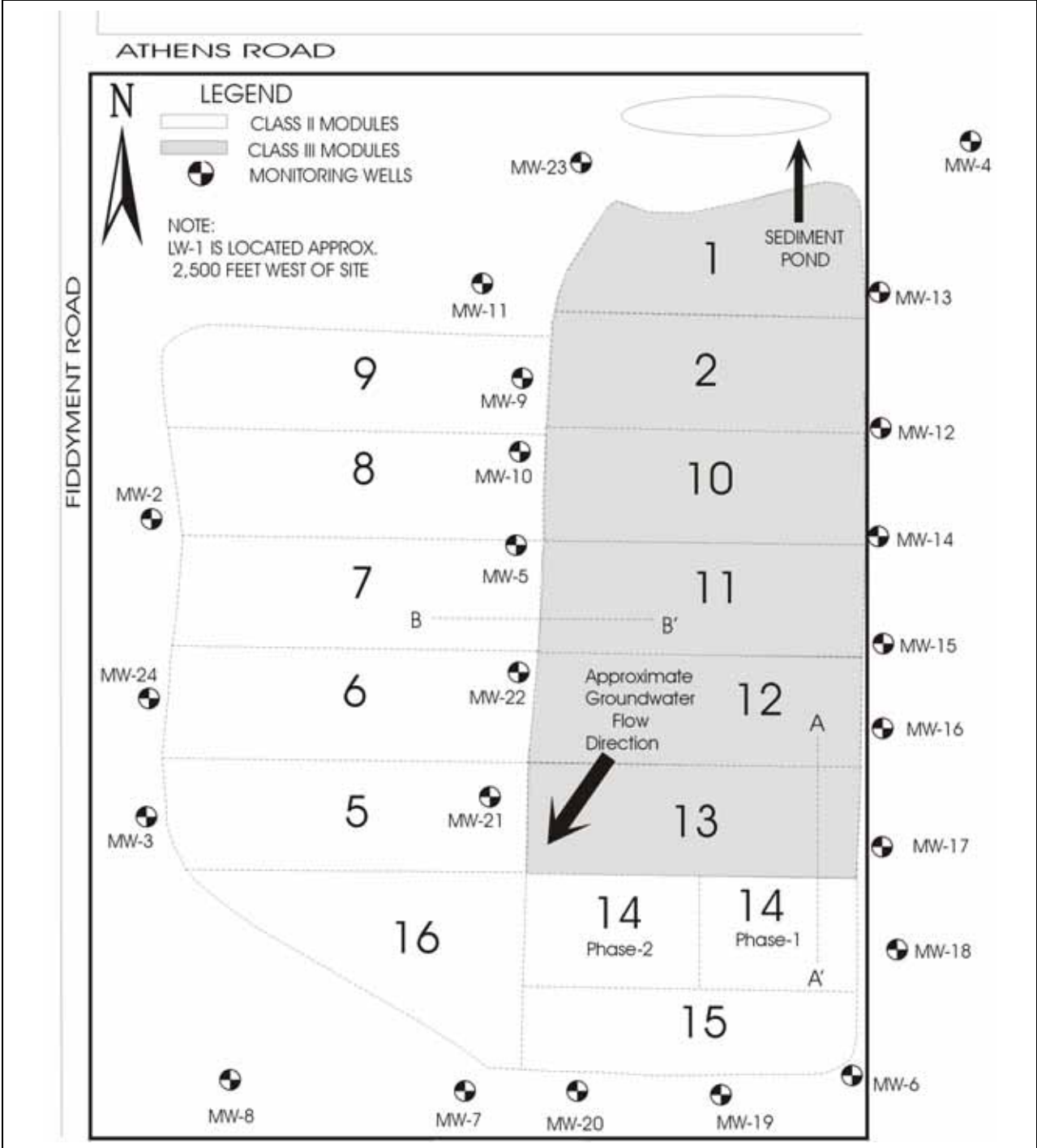


**SITE LOCATION MAP**

WDRs No.  
Western Placer Waste Management Authority  
Western Regional Sanitary Landfill  
Placer County

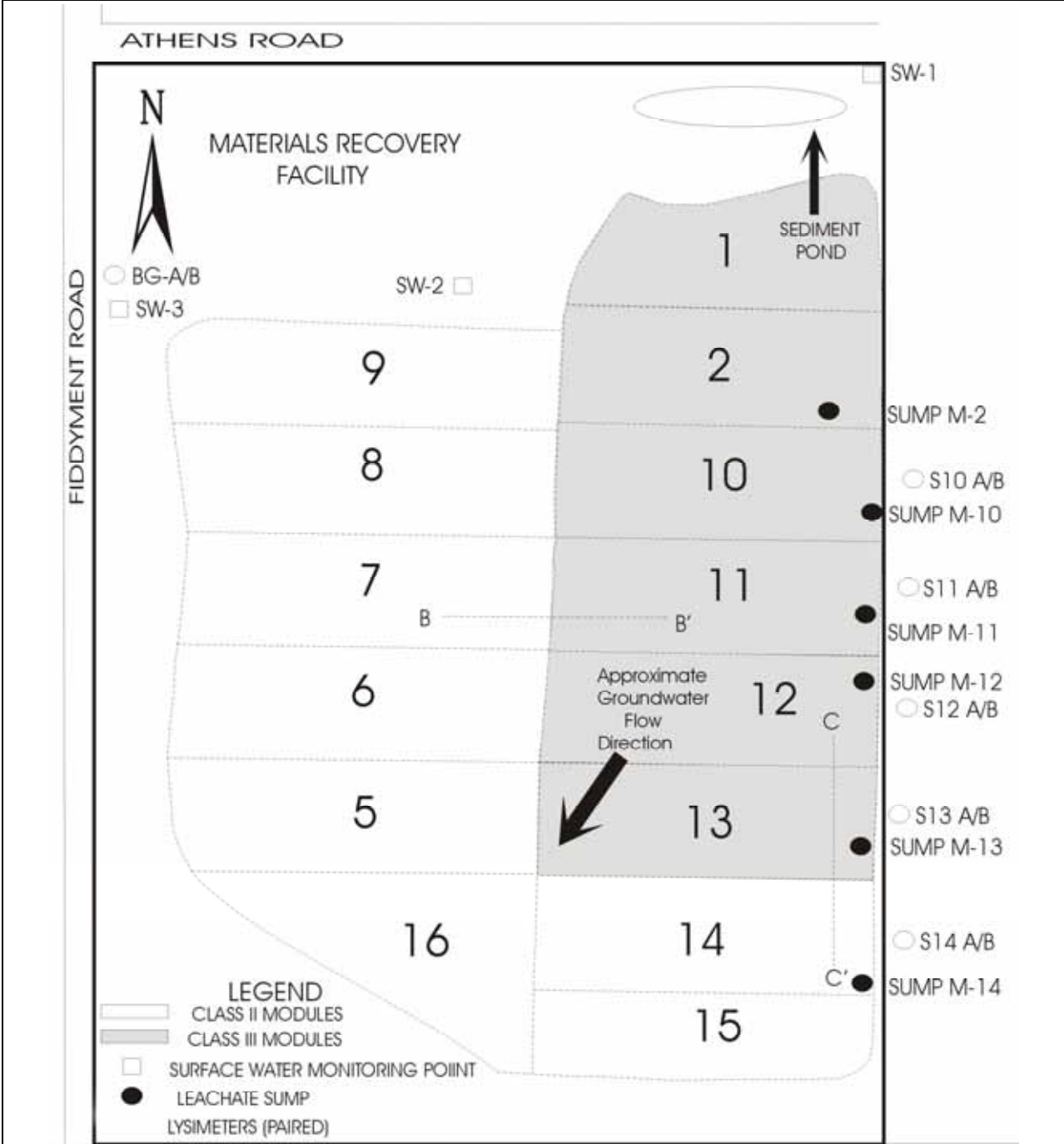
*Not to Scale*



**FACILITY LAYOUT MAP / MONITORING WELLS**

WDRs No.  
Western Placer Waste Management Authority  
Western Regional Sanitary Landfill  
Placer County

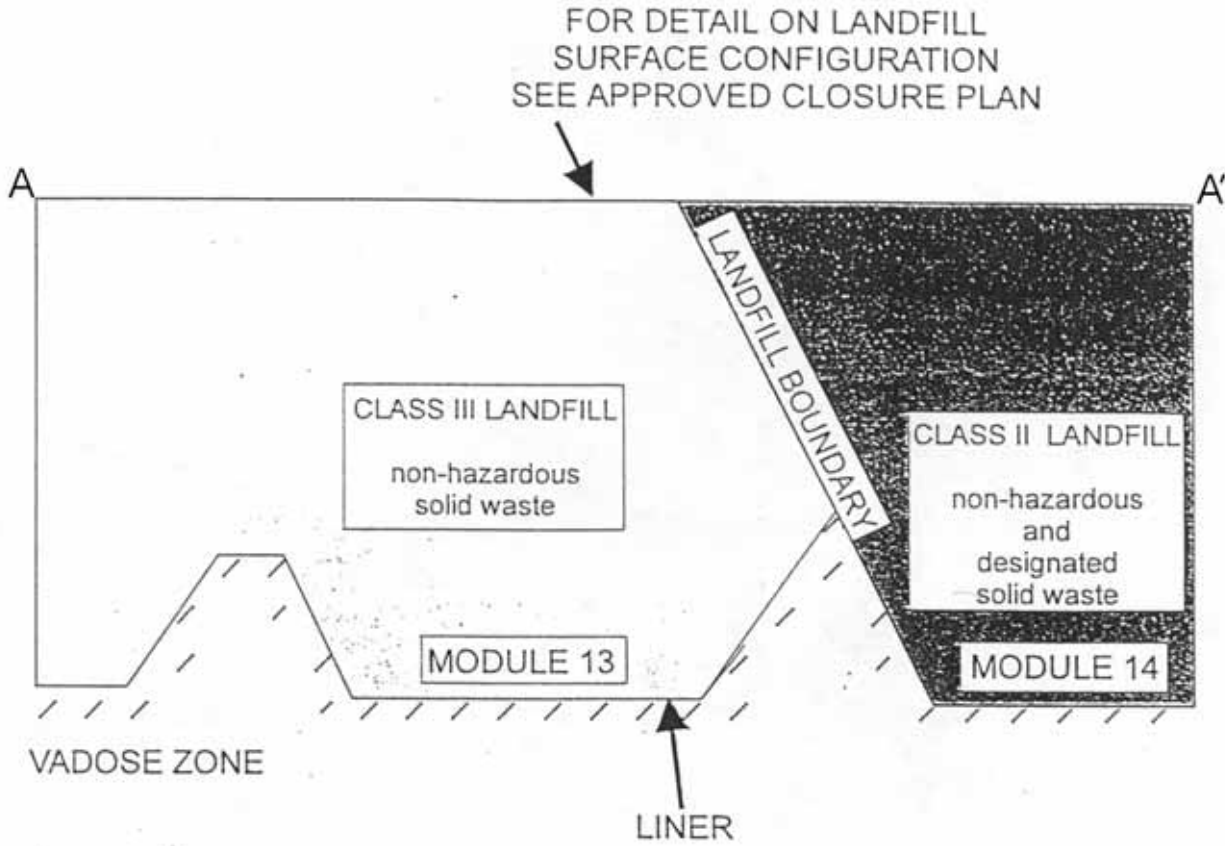
*Not to Scale*



**SURFCAE WATER MONITORING  
VANDOSE ZONE MONITORING  
AND SUMP LOCATIONS**

WDRs No.  
Western Placer Waste Management Authority  
Western Regional Sanitary Landfill  
Placer County

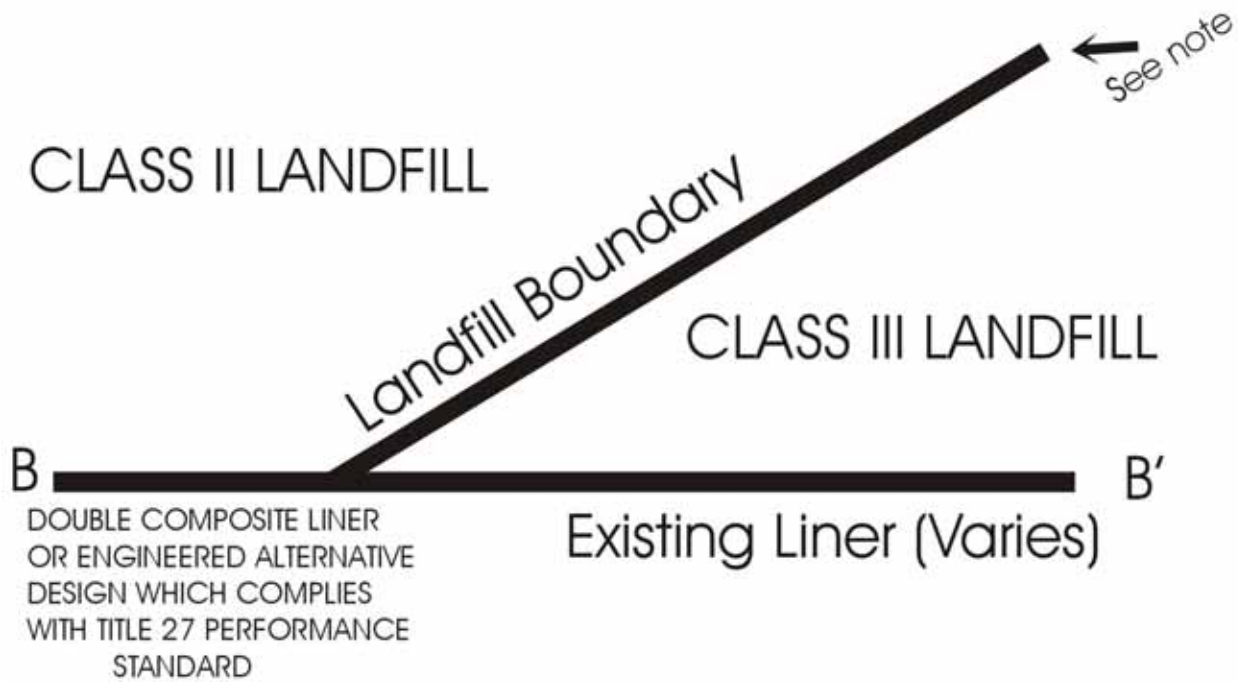
Not to Scale



**CLASS II / CLASS III LANDFILL BOUNDARY  
SECTION A-A' LOOKING EAST**

WDRs No.  
Western Placer Waste Management Authority  
Western Regional Sanitary Landfill  
Placer County

*Not to Scale*



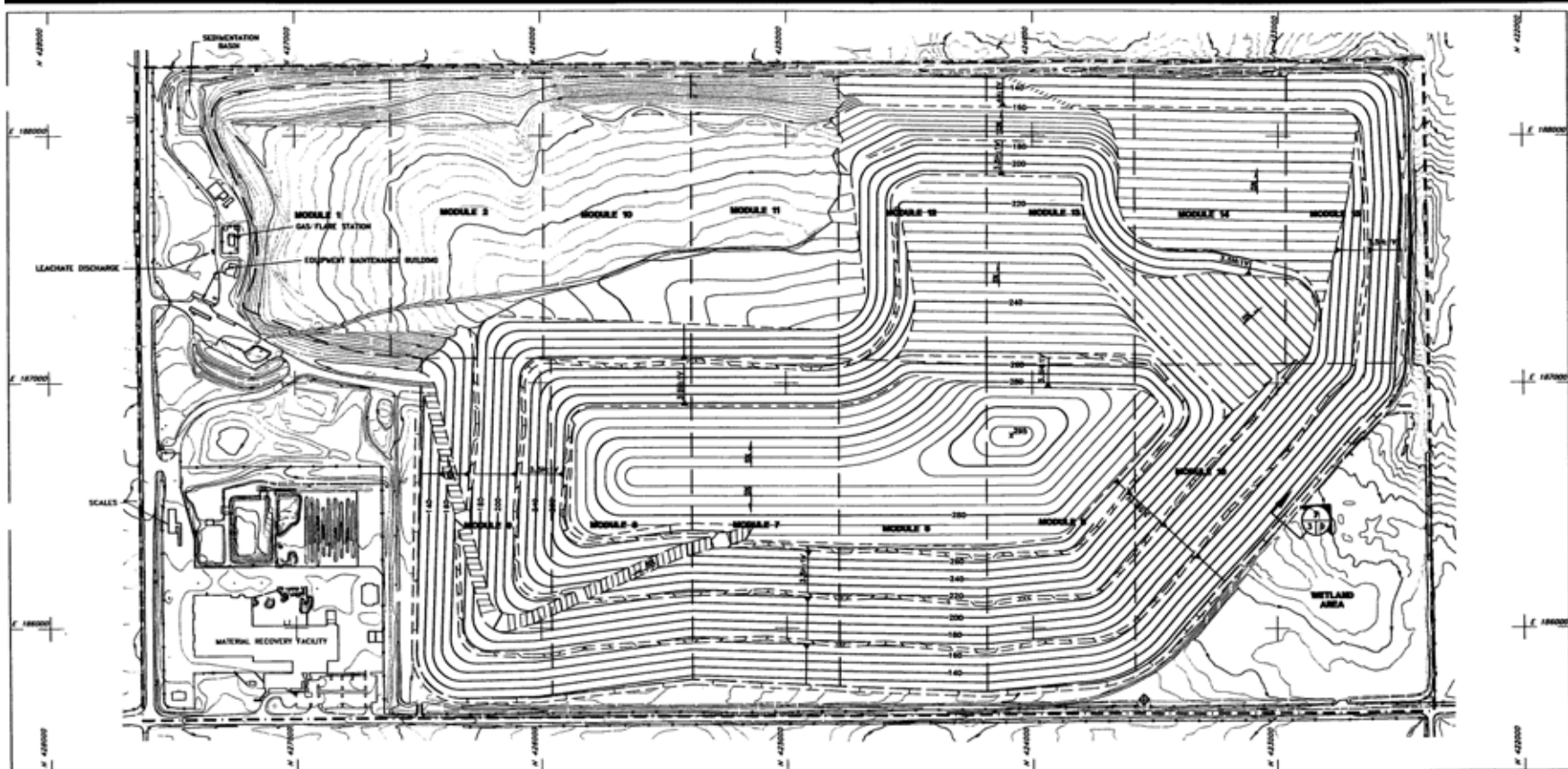
**NOTE:**

Each module-specific termination and or continuation will be analyzed during construction-level design of each module. A composite liner system is required at boundary with Modules 1, 2, 10 and 11. A geomembrane is required at boundary with Modules 12 and 13. Class II leachate shall not drain into Class III LCRS.

**CONTINUATION AT CLASS II / III SEPARATION SECTION  
B-B' LOOKING NORTH**

WDRs No.  
Western Placer Waste Management Authority  
Western Regional Sanitary Landfill  
Placer County

*Not to Scale*



**FINAL GRADING PLAN**

WDRs No.  
Western Placer Waste Management Authority  
Western Regional Sanitary Landfill  
Placer County

*Not to Scale*