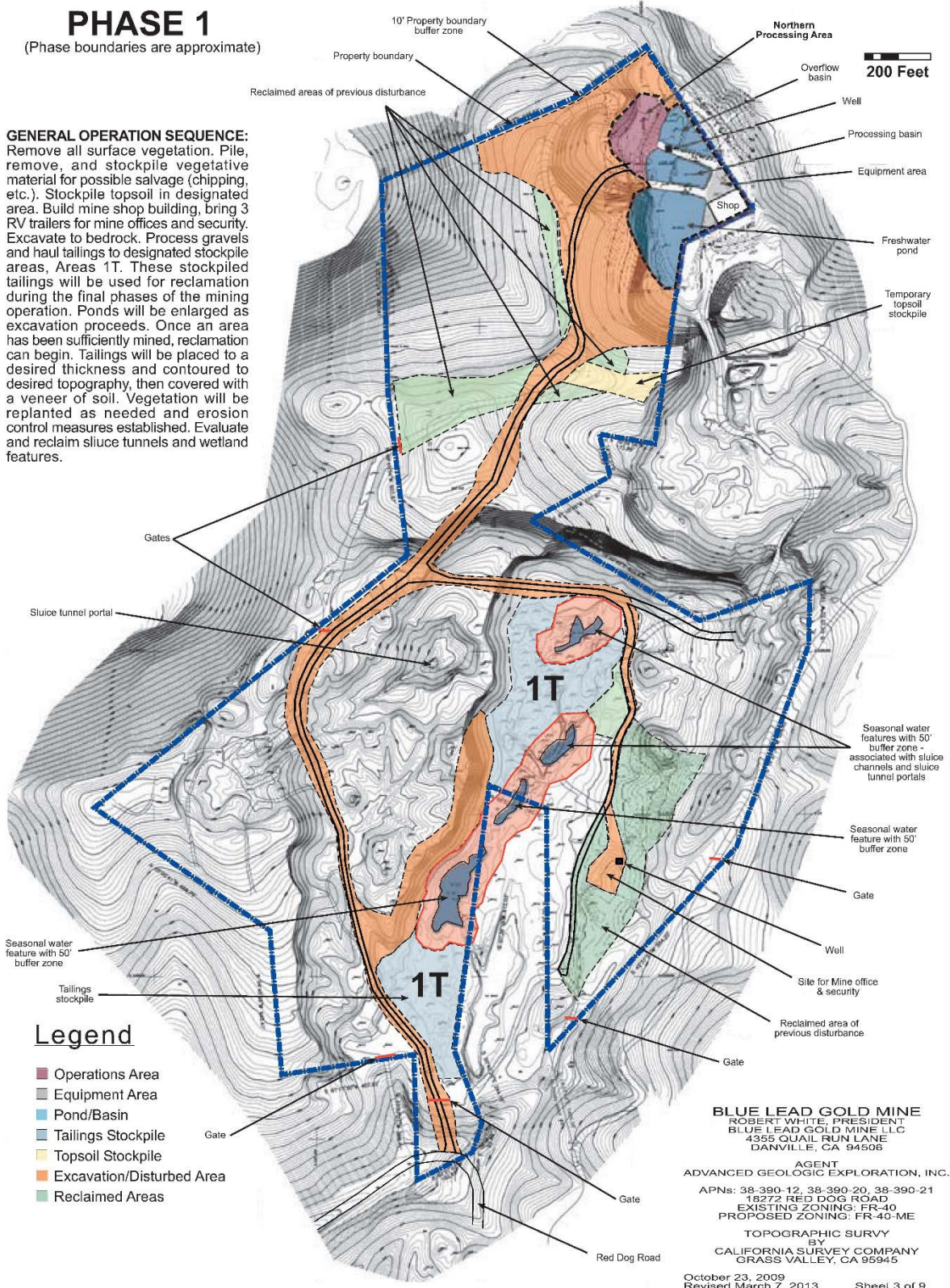


PHASE 1

(Phase boundaries are approximate)

GENERAL OPERATION SEQUENCE:
 Remove all surface vegetation. Pile, remove, and stockpile vegetative material for possible salvage (chipping, etc.). Stockpile topsoil in designated area. Build mine shop building, bring 3 RV trailers for mine offices and security. Excavate to bedrock. Process gravels and haul tailings to designated stockpile areas, Areas 1T. These stockpiled tailings will be used for reclamation during the final phases of the mining operation. Ponds will be enlarged as excavation proceeds. Once an area has been sufficiently mined, reclamation can begin. Tailings will be placed to a desired thickness and contoured to desired topography, then covered with a veneer of soil. Vegetation will be replanted as needed and erosion control measures established. Evaluate and reclaim sluice tunnels and wetland features.



Legend

- Operations Area
- Equipment Area
- Pond/Basin
- Tailings Stockpile
- Topsoil Stockpile
- Excavation/Disturbed Area
- Reclaimed Areas

BLUE LEAD GOLD MINE
 ROBERT WHITE, PRESIDENT
 BLUE LEAD GOLD MINE LLC
 4355 QUAIL RUN LANE
 DANVILLE, CA 94506

AGENT
 ADVANCED GEOLOGIC EXPLORATION, INC.
 APNs: 38-390-12, 38-390-20, 38-390-21
 18272 RED DOG ROAD
 EXISTING ZONING: FR-40
 PROPOSED ZONING: FR-40-ME

TOPOGRAPHIC SURVY
 BY
 CALIFORNIA SURVEY COMPANY
 GRASS VALLEY, CA 95945

October 23, 2009
 Revised March 7, 2013

Sheet 3 of 9

PROPOSED PHASE 1 MAP WITH 1T AREAS
 Blue Lead Gold Mining LLC
 Blue Lead Gold Mine
 Nevada County

