

# FOOD SAFETY EXPERT PANEL NEW AND EXPANDING PROJECTS



**Clay Rodgers**  
Assistant Executive  
Officer

**Joshua G. Mahoney**  
Water Resource Control  
Engineer



# Proposed New Project

- **Oil Operator:**

- ◆ E&B Natural Resources

- **Water District:**

- ◆ Sherwood Hills Water District

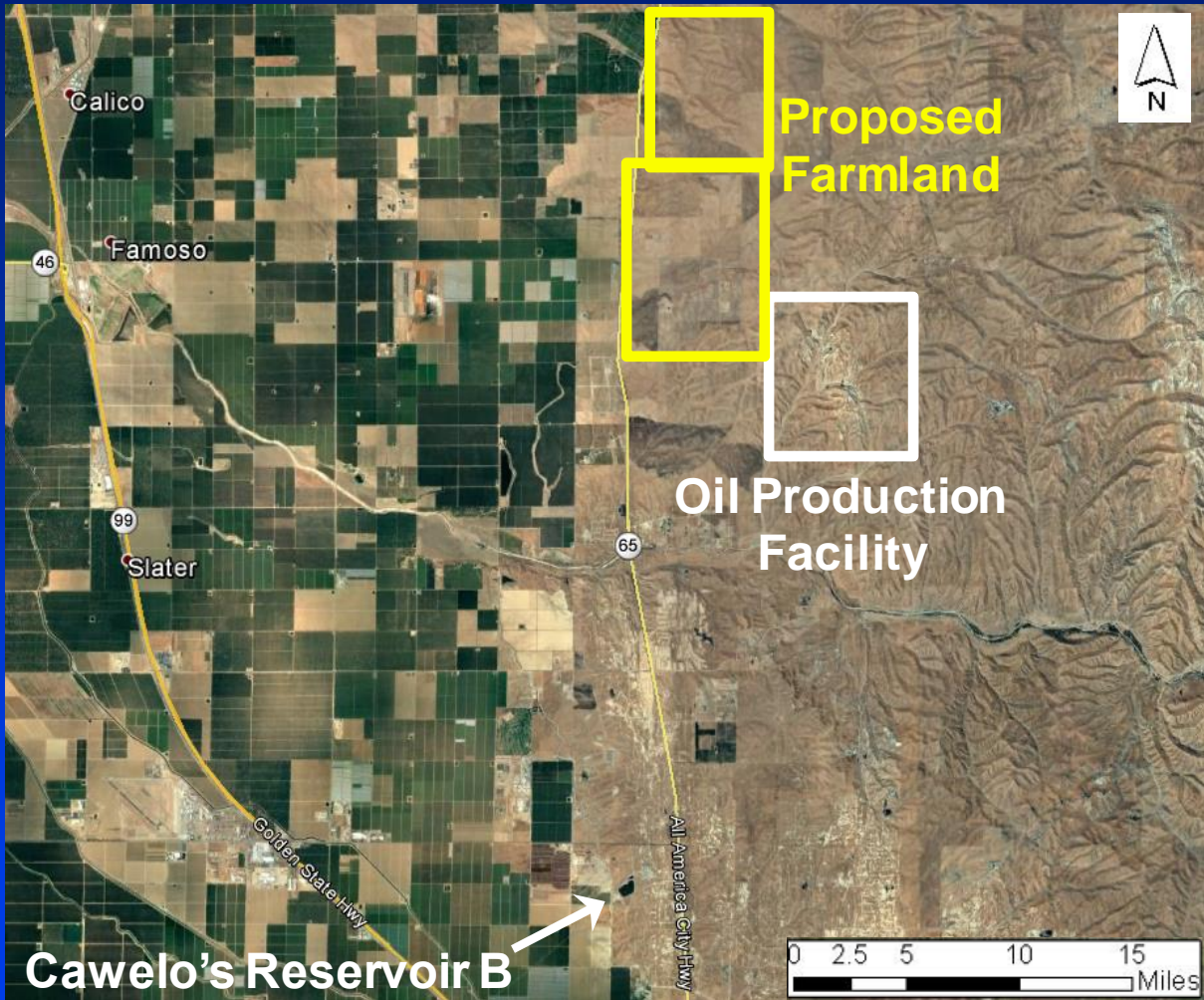
- **Project Status:**

- ◆ Submitted application to the Water Board
- ◆ Preparing draft WDRs to be considered for adoption

# Project Details

- **Oil Field:** Poso Creek Oil Field (McVan Area)
- **Proposed Discharge:** 9,400 acre-feet per year
- **Proposed Acreage:**
  - ◆ Phase 1 ~ 1,000 acres
  - ◆ Phase 2 ~ 3,500 acres
  - ◆ **Total ~ 4,500 acres**
- **Proposed Crops:**
  - ◆ Citrus
  - ◆ Grapes,
  - ◆ Nuts, and
  - ◆ Silage or grain crops.

# Project Location



# Project Details

- **Operations**

- ◆ Produced wastewater may not be blended prior to reuse

- **Water Quality Results**

Oil Operator	Electrical Conductivity	Total Dissolved Solids	Chloride	Boron
	(umhos/cm)	(mg/l)	(mg/l)	(mg/l)
E&B Natural Resources	505	370	59	0.76
Chevron USA, Inc.	772	-	116	0.78
Valley Water Management Company	789	-	87	1.08

# Proposed Expanding Project

- **Oil Operator:**
  - ◆ Hathaway, LLC
  
- **Water District:**
  - ◆ Kern-Tulare Water District
  - ◆ Jasmin Ranchos Mutual Water Company
  
- **Project Status:**
  - ◆ Application is in progress

# Project Details

- **Oil Field:**

- ◆ Jasmin Oil Field

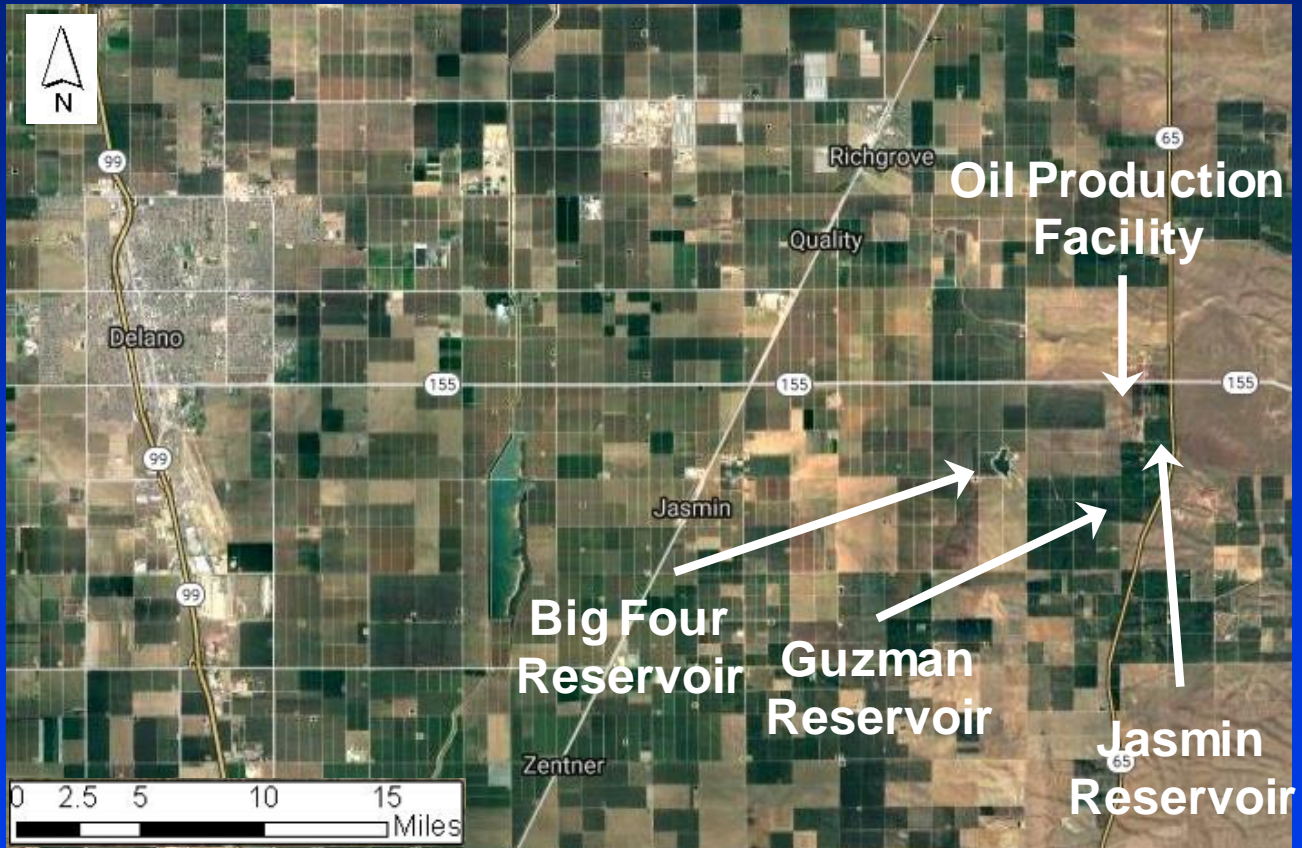
- **Proposed Discharge:**

- ◆ From approximately 1,562 acre-feet (2016) to 1,829 acre-feet

- **Project Description:**

- ◆ Construction of a new storage reservoir (Guzman Reservoir)

# Project Location





# Questions ?

