

CALIFORNIA REGIONAL WATER QUALITY CONTROL BOARD  
COLORADO RIVER BASIN REGION

ORDER NO. 76-59

WASTE DISCHARGE REQUIREMENTS  
FOR  
UNITED STATES MARINE CORPS BASE  
Solid Waste Disposal Site  
Twentynine Palms - San Bernardino County

The California Regional Water Quality Control Board, Colorado River Basin Region, finds that:

1. The United States Marine Corps Base, Twentynine Palms, CA 92278, (hereinafter also referred to as the discharger), submitted a Report of Waste Discharge dated April 1, 1976.
2. The discharger is discharging about 33,300 cubic-yards-per-year of Group 2 and Group 3 wastes in disposal areas located in the S $\frac{1}{2}$ , of Section 8, and the NE $\frac{1}{4}$ , of Section 17, T2N, R9E, SBB&M, as shown on Attachment "A" incorporated herein and made part of this Order.
3. Current plans are that the above disposal areas will remain as a sanitary landfill operation. The overall site boundary, enclosing previously used disposal areas, active areas, and reserve acreage, contains approximately 415 acres.
4. The waste disposal site is between the Bullion Mountains and Mesquite Valley. Granitic rocks outcrop through much of the north and south portions of the disposal site. Spread over some of the lower slopes is semiconsolidated older alluvium. A broad valley filled with unconsolidated younger alluvium crosses the disposal site from east to west. The Valley contains several usually dry stream channels. Geohydrology of the specific waste disposal areas in the site are as follows:

Disposal Area

- a. Previously used area "A" is partly on older alluvium and partly on younger alluvium. Ground water is probably present at a depth of more than 200 feet.
- b. Previously used area "B" is on older alluvium, with no significant quantities of ground water present.
- c. Current disposal area "C" is partly on granite and partly on older alluvium, with no significant quantities of ground water present.

*Superseded  
by 84-67  
5/16/84*

- d. Future area "D" is mostly on older alluvium, the northern edge on granite and the southeast 20 percent on younger alluvium. There may be ground water within 20 feet of the surface at the southeast corner of the area, but no significant quantities of ground water are present elsewhere.
5. This disposal site meets the criteria contained in California Administrative Code, Title 23, Chapter 3, Subchapter 15, for classification as a Class II-2 Disposal Site suitable to receive Group 2 and Group 3 waste.
6. The total capacity of the described disposal areas C & D is 735,000 cubic yards.
7. The beneficial uses of the groundwaters of the Dale Hydrologic Unit are:
  - a. Municipal supply
  - b. Industrial supply
  - c. Agricultural supply
8. There is no use being made of land within 1,000 feet of the disposal site. At present it consists of natural desert.
9. The Water Quality Control Plan for the West Colorado River Basin was adopted by the Board on April 10, 1975; and this order implements the objectives stated in the Plan.
10. The discharge at this site has been subject to waste discharge requirements under Order No. 72-80.
11. The Board has notified the discharger and interested agencies and persons of its intent to prescribe waste discharge requirements for the proposed discharge.
12. The Board in a public meeting heard and considered all comments pertaining to the discharge.

IT IS HEREBY ORDERED, the United States Marine Corps Base at Twentynine Palms shall comply with the following:

A. Discharge Specifications

1. The treatment or disposal of wastes shall not cause pollution or a nuisance.
2. Waste materials shall not be discharged or allowed to be wind-blown outside the designated disposal areas shown on Attachment "A".

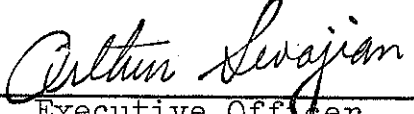
3. The disposal areas shall be protected from any washout or erosion of wastes or covering material, and from inundation which could occur as a result of floods having a predicted frequency of once in 100 years.
4. Surface drainage from tributary areas, and internal site drainage from surface or subsurface sources shall not contact or percolate through waste other than Group 3 discharged at this site.
5. Group 1 wastes shall not be discharged at this site.
6. The discharger shall remove and relocate any wastes which are discharged at this site in violation of these requirements.
7. There shall be no ponding or surface flow of discharged liquid wastes unless special arrangements are made with the Executive Officer.
8. The disposal area shall be graded to promote lateral runoff of precipitation and to prevent ponding.
9. Group 2 wastes shall not be discharged on any surface which is less than six feet above the highest anticipated groundwater level.

#### B. Provisions

1. The discharger shall maintain a copy of this order at the site so as to be available at all times to site operating personnel.
2. The discharger shall comply with the "Monitoring and Reporting Program No. 76-59", and the "General Provisions for Monitoring and Reporting", and future revisions thereto as specified by the Executive Officer.
3. The discharger shall file with this Board a report of any material change or proposed change in the character, location or quantity of this waste discharge. This includes any proposed change in the boundaries or contours of the disposal areas.
4. The discharger shall file a written report within 90 days after the total quantity of wastes discharged at this site equals 75 percent of the reported capacity of the site. The report shall contain a schedule for studies, design and other steps needed to provide additional capacity, or total quantity discharged shall be limited to the reported capacity.

5. Ninety (90) days prior to discontinuing the use of this site for waste disposal, the discharger shall submit a technical report to the Board describing the methods and controls to be used to assure protection of the quality of surface and groundwaters of the area during final operations and with any proposed subsequent use of the land. This report shall be prepared by or under the supervision of a California registered civil engineer or a certified engineering geologist. The closing of the site shall not result in a violation of the specifications and provisions of this Order.
6. This Board considers the property owner to have a continuing responsibility for correcting any problems which may arise in the future as a result of this waste discharge or water applied to this property during subsequent use of the land for other purposes. In the event of any change in operation, or in control of land or waste disposal facilities owned or controlled by the United States Marine Corps Base at Twentynine Palms, said Base shall:
  - a. Notify this Board of such change; and
  - b. Notify the succeeding owner or operator of the existence of this Order by letter; a copy of which shall be filed with this Board.
7. This Order supersedes Board Order No. 72-80.

I, Arthur Swajian, Executive Officer, do hereby certify the foregoing is a full, true, and correct copy of an Order adopted by the California Regional Water Quality Control Board, Colorado River Basin Region, on November 18, 1976.

  
\_\_\_\_\_  
Executive Officer

CALIFORNIA REGIONAL WATER QUALITY CONTROL BOARD  
COLORADO RIVER BASIN REGION

MONITORING AND REPORTING PROGRAM NO. 76-59  
FOR  
UNITED STATES MARINE CORPS BASE  
SOLID WASTE DISPOSAL SITE  
Twentynine Palms - San Bernardino County

Location: S $\frac{1}{2}$ , Section 8, and NE $\frac{1}{4}$ , Section 17, T2N, R9E, SBB&M.

MONITORING

The United States Marine Corps Base at Twentynine Palms shall report to the Regional Board concerning the following:

<u>Item</u>	<u>Units</u>	<u>Reporting Frequency</u>
Refuse Discharged at Solid Waste Disposal Site	Cu. Yd./Quarter	Quarterly
Any discharge of wastes other than those allowed in the specifications	Type, Volume, and exact location	Immediately upon becoming aware that the waste has been discharged.

REPORTING

Quarterly monitoring reports shall be submitted to the Regional Board by the 15th day of April, July, October and January of each year. Please forward monitoring reports to the following:

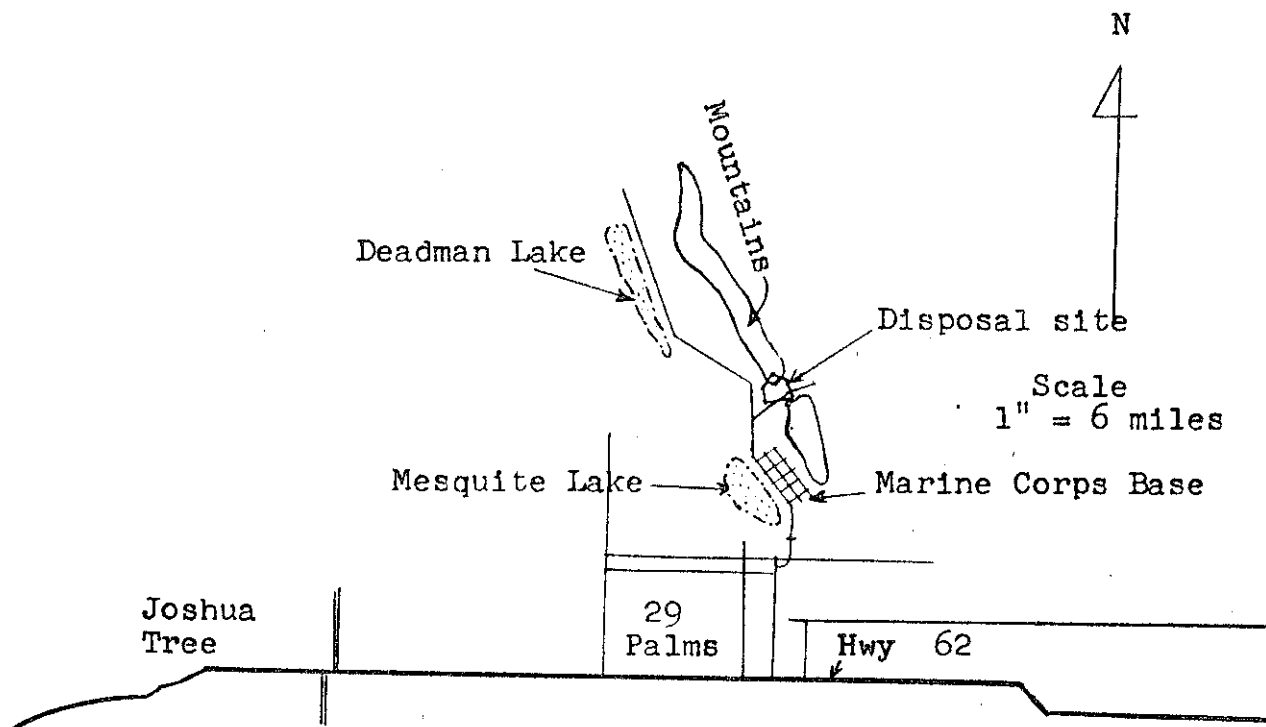
California Regional Water Quality Control Board  
Colorado River Basin Region  
73-271 Highway 111, Suite 21  
Palm Desert, CA 92260

Ordered by

*Arthur Levajian*  
Executive Officer

November 18, 1976  
Date

CALIFORNIA REGIONAL WATER QUALITY CONTROL BOARD - 7



SITE MAP

UNITED STATES MARINE CORPS BASE  
Solid Waste Disposal Site  
Twentynine Palms - San Bernardino County

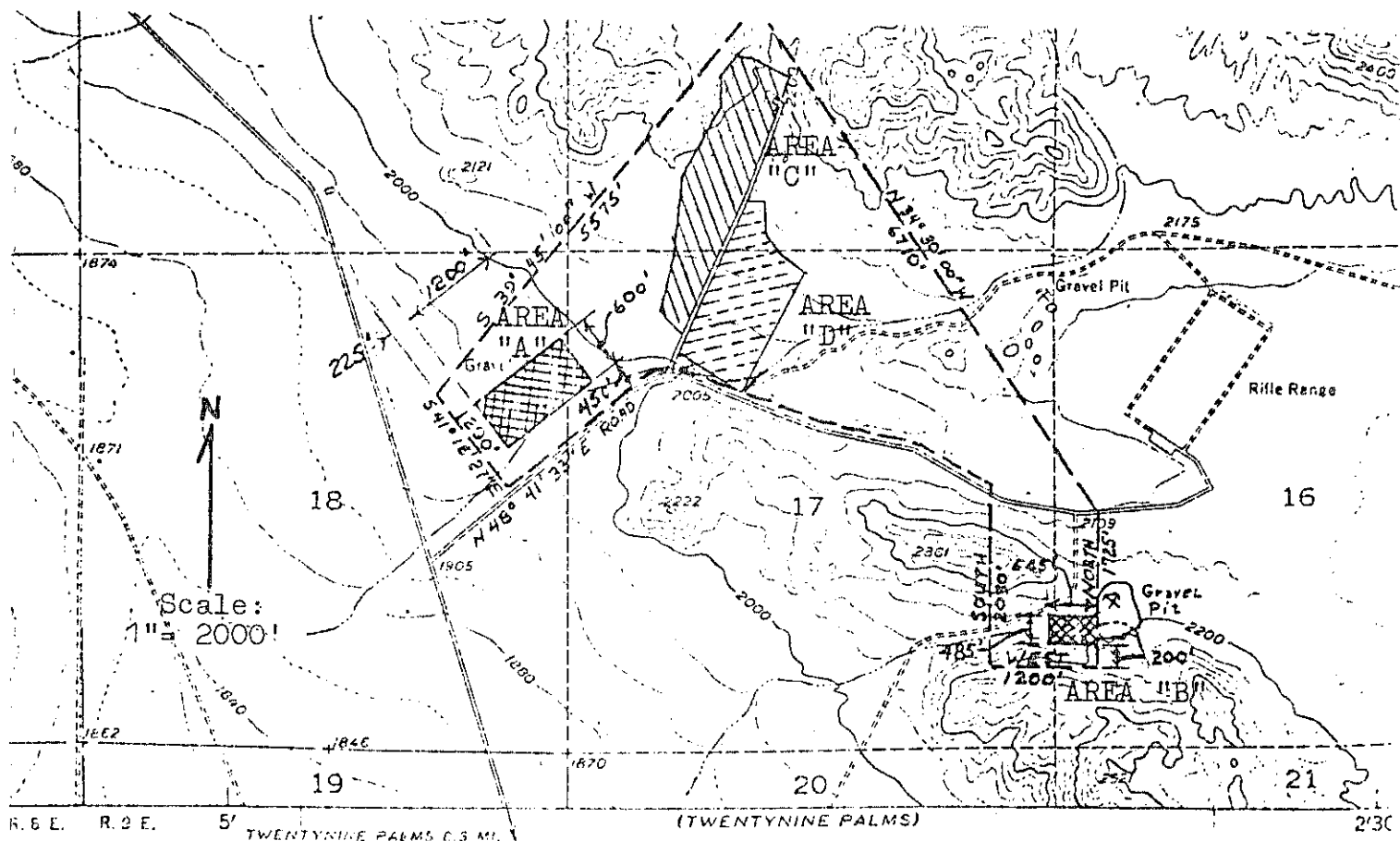
S $\frac{1}{2}$  of Section 8 and NE $\frac{1}{4}$  of Section 17, T2N, R9E, SBB&M

Deadman Lake SE 7.5' Topographic Map


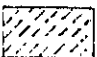

Order No. 76-59

Attachment A  
Order No. 76-59

UNITED STATES MARINE CORPS BASE  
Solid Waste Disposal Site  
Twentynine Palms - San Bernardino County



LEGEND:

- BOUNDARY LINE
-  AREA IN USE (AREA "C")
-  FUTURE USE AREA (AREA "D")
-  PREVIOUSLY USED AREA (AREAS "A" & "B")

TOTAL SITE	=	415.0 ACRES
AREA "A"	=	16.5 ACRES
AREA "B"	=	6.1 ACRES
AREA "C"	=	34.4 ACRES
AREA "D"	=	16.3 ACRES

DEPARTMENT OF THE NAVY		NAVY FACILITIES ENGINEERING COMMAND	
PUBLIC WORKS OFFICE, MARINE CORPS BASE		TWENTYNINE PALMS, CALIFORNIA	
DESIGNED		<b>SOLID WASTES DISPOSAL SITE</b>	
DRAWN	J.B.S.		
CHECKED			
CHIEF ENGR			
DATE			
DATE			