

CALIFORNIA REGIONAL WATER QUALITY CONTROL BOARD
COLORADO RIVER BASIN REGION

ORDER NO. 77-55

WASTE DISCHARGE REQUIREMENTS
FOR
ANNONA COMPANY
SILVER REEF MINE
Southeast of Lucerne Valley - San Bernardino County

The California Regional Water Quality Control Board, Colorado River Basin Region, finds that:

1. Annona Company (hereinafter also referred to as the discharger), P. O. Box 1116, Hesperia, CA 92345, submitted a report of waste discharge dated May 24, 1977.
2. The discharger is recirculating about 50,000 gallons-per-day of washwater for processing gold and silver. The washwater is stored in a 30 mill rubber-lined settling basin that is about six feet deep and 100 feet in diameter. After the ore is crushed, water is reused from the basin to transport the ore by hydraulic flow over concentrating tables which clean and separate out the precious metal ores. The initial discharges of washwater for each load of ore deposit a total of about two (2) tons per day of sludge into an earthen tailing basin (30' x 30' x 3'). Following evaporation, the tailings are removed and distributed on the surrounding land. The discharge site is located in the NW $\frac{1}{4}$ of the SW $\frac{1}{4}$ of Section 2, T3N, R2E, SBB&M.
3. The discharger states that no chemicals other than liquid detergent are added during the entire process.
4. The discharger reports that a well drilled near the site to a depth of about 150 feet produced no groundwater. The supply water in the settling basin is trucked about four miles from Old Woman Springs.
5. The San Bernardino County Environmental Analysis Division has prepared an Environmental Information Report. This report states that the project will not have any significant effect on the environment.

Rescinded
9/19/84
84-103

6. The Water Quality Control Plan for the West Colorado River Basin (7A) was adopted by the Board on April 10, 1975. The Basin Plan contains water quality objectives for the Lucerne Hydrologic Unit.
7. The beneficial uses of the groundwaters of the Lucerne Hydro Unit are:
 - a. Municipal supply
 - b. Agricultural supply
 - c. Industrial supply
8. The Board has notified the discharger and interested agencies and persons of its intent to prescribe waste discharge requirements for the discharge.
9. The Board in a public meeting heard and considered all comments pertaining to the discharge.

IT IS HEREBY ORDERED, the discharger shall comply with the following:

A. Discharge Specifications

1. Neither the treatment nor the discharge of wastewater shall create a pollution or a nuisance as defined in the California Water Code.
2. There shall be no seepage or surface flow of wastewater away from the discharge facilities.
3. Wastewater discharged to basins shall be limited to process wastewater and shall not contain sewage or toxic materials.
4. A minimum freeboard depth of 18 inches shall be maintained in each basin.
5. Adequate measures shall be taken to assure that flood or surface drainage waters do not erode or otherwise render portions of the discharge facilities inoperable.

6. There shall be no discharge of tailings to any drainage channels.
7. The discharger shall remove and relocate any wastes which are discharged contrary to the requirements contained in this Order.
8. Garbage, cans, paper and other rubbish shall be discharged at a solid waste disposal site approved by the Regional Board to receive such wastes.

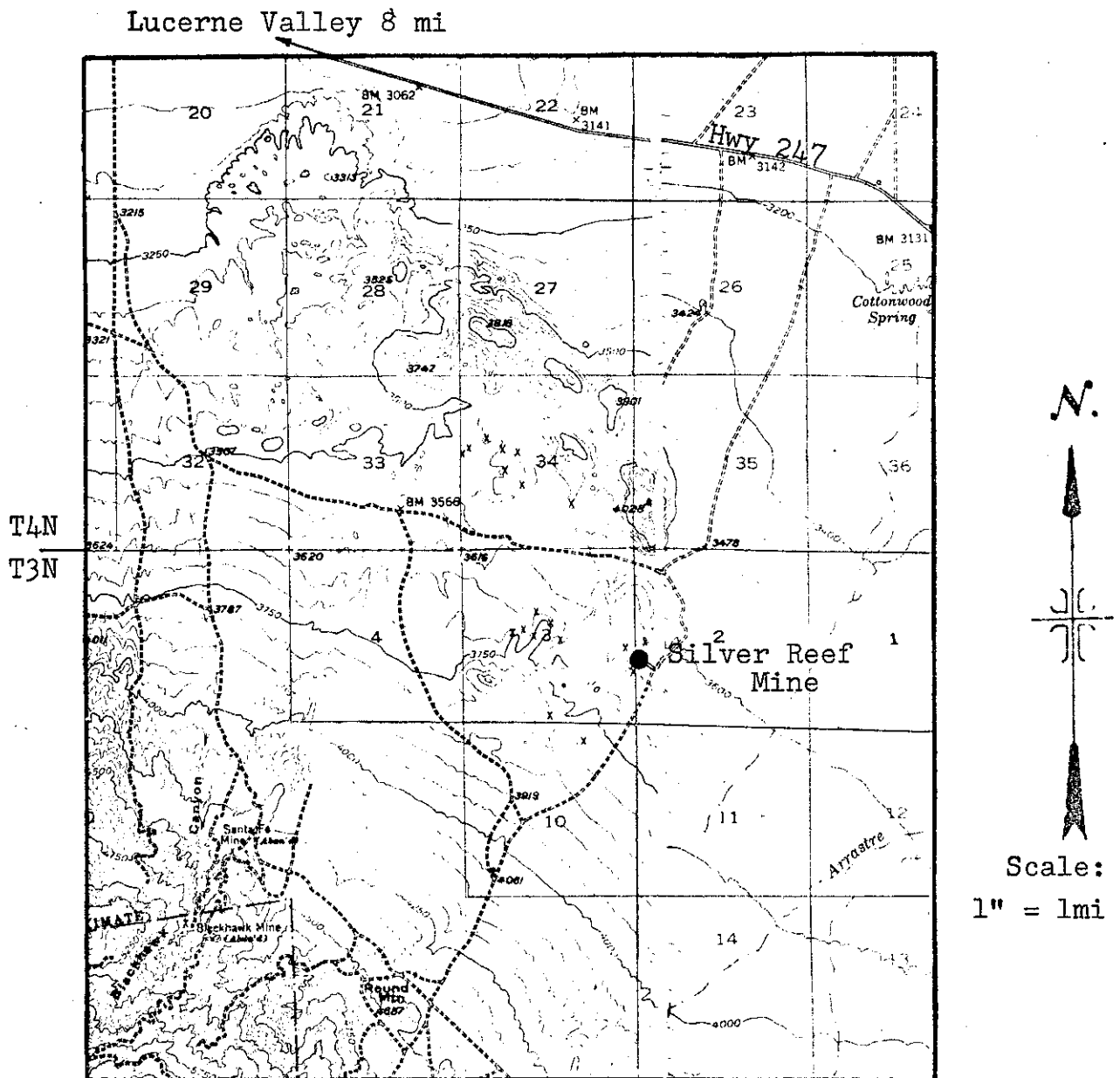
B. Provisions

1. The discharger shall notify the Board at least 30 days prior to any modification in this facility which could result in material change in the quality, quantity, or location of this discharge.
2. In the event of any change in control of the land upon which the discharge facilities are located, the discharger shall notify the succeeding owner in writing of the existence of this Order, and also forward a copy of said communication to the Regional Board.
3. Upon request from this Board's Executive Officer, the discharger shall furnish technical and/or monitoring reports on the treatment and discharge of wastes.

I, Arthur Swajian, Executive Officer, do hereby certify the foregoing is a full, true, and correct copy of an Order adopted by the California Regional Water Quality Control Board, Colorado River Basin Region, on September 21, 1977.


Executive Officer

CALIFORNIA REGIONAL WATER QUALITY CONTROL BOARD - 7



SITE MAP

ANNONA COMPANY
SILVER REEF MINE

Southeast of Lucerne Valley - San Bernardino County
NW $\frac{1}{4}$, SW $\frac{1}{4}$ of Section 2, T3N, R2E, SBB&M
Lucerne Valley and Old Woman Springs 15 min. Topographic Maps

Order No. 77-55