

CALIFORNIA REGIONAL WATER QUALITY CONTROL BOARD
COLORADO RIVER BASIN REGION

ORDER NO. 78 - 79

WASTE DISCHARGE REQUIREMENTS
FOR
VALLECITO COUNTY PARK
Southeast of Julian - San Diego County

The California Regional Water Quality Control Board, Colorado River Basin Region, finds that:

1. The County of San Diego Parks and Recreation Department (hereinafter also referred to as the discharger), 2454 Heritage Park Row, San Diego, California 92110, submitted updated information on the discharge of wastes on June 10, 1978.
2. The discharger is discharging a maximum of 2,000 gallons-per-day of domestic sewage from a campground having 2 mobile home spaces, 48 camp sites and 2 restrooms. The wastewater is discharged through septic tanks into a leach field located in the NE $\frac{1}{4}$ of the NE $\frac{1}{4}$ of Section 10, T14S, R6E, SBB&M.
3. The discharger has reserved an area of sufficient size for 100% replacement of the leach field. This area is designated on Attachment "A" incorporated herein and made a part of this Order.
4. The discharge from this campground has been subject to waste discharge requirements adopted in Board Order No. 72 - 74.
5. The Water Quality Control Plan for the West Colorado River Basin was adopted by the Board on April 10, 1975. The Basin Plan contains water quality objectives for the Anza-Borrego Hydrologic Subunit.
6. The beneficial uses of the groundwaters of the Anza-Borrego Hydrologic Unit are:
 - a. Municipal supply
 - b. Industrial supply
 - c. Agricultural supply

7. The Board has notified the discharger and interested agencies and persons of its intent to prescribe waste discharge requirements for the discharge.
8. The Board in a public meeting heard and considered all comments pertaining to the discharge.
9. This campground constitutes an ongoing project in accordance with provisions of the California Environmental Quality Act (Public Resources Code Section 21000 et seq.) and the State Guidelines because the governmental approvals on or after April 5, 1973, do not involve a greater degree of responsibility or control over such activity than the governmental approvals received prior to that date.

IT IS HEREBY ORDERED, the discharger shall comply with the following:

A. Discharge Specifications

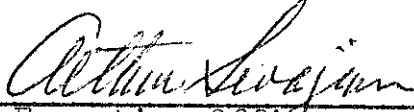
1. Neither the treatment nor the discharge of wastewater shall create a pollution or a nuisance as defined in Division 7 of the California Water Code.
2. No wastewater other than domestic sewage shall be discharged at this location.
3. Wastewater discharged subsurface shall be retained underground with no surfacing.
4. There shall be no discharge of wastewater within 200 feet of any domestic water well.
5. Adequate measures shall be taken to assure that flood or surface drainage waters do not erode or otherwise render portions of the discharge facilities inoperable.
6. Septic tank cleanings shall be discharged only by a duly authorized service.

B. Provisions

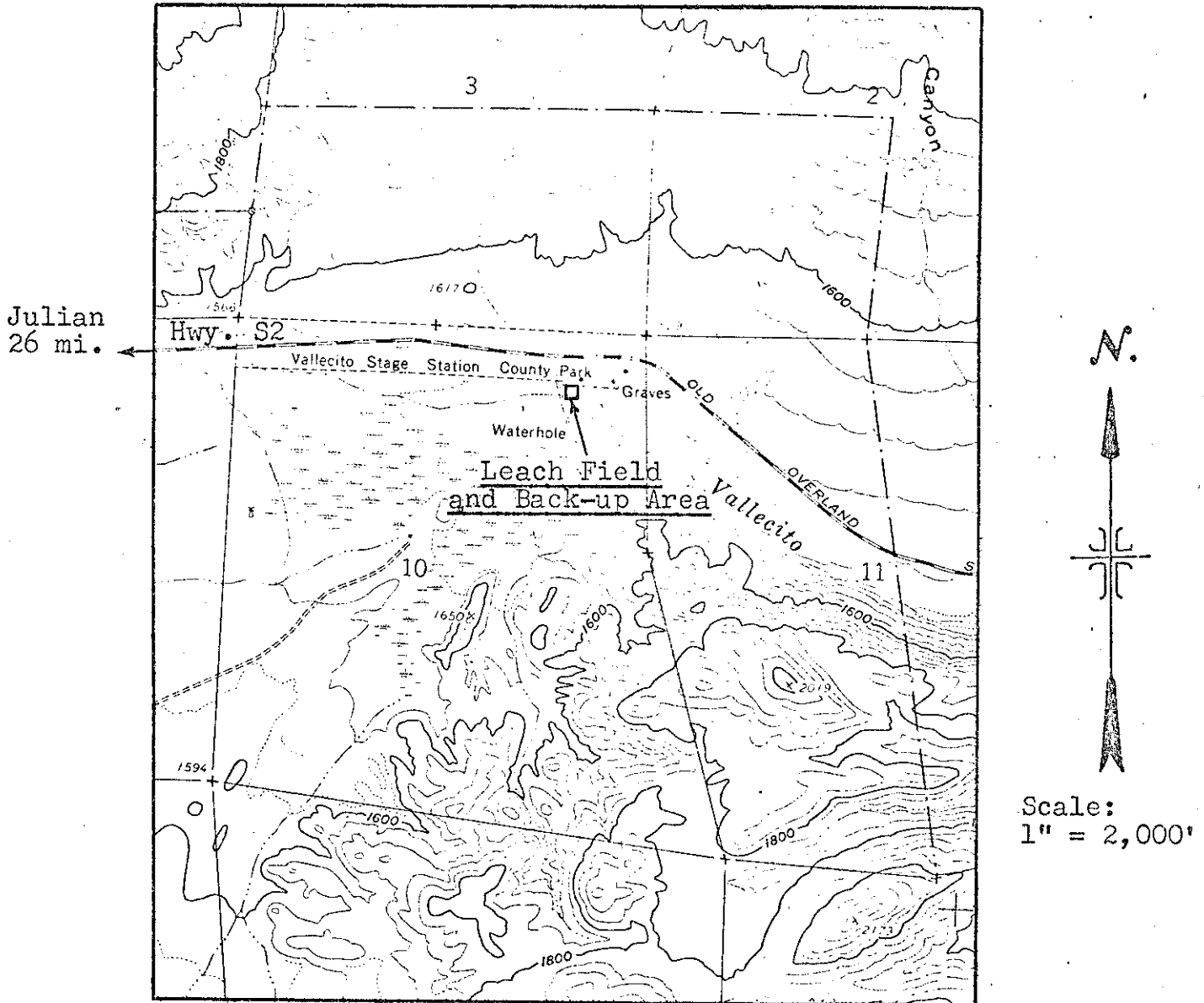
1. The area reserved for 100% replacement of the leach field, as shown on Attachment "A", shall at all times be retained servient to this campground, for the purpose of providing additional subsurface sewage disposal capacity, until such time as this park is connected to a municipal sewerage system.

2. Upon request from this Board's Executive Officer, the discharger shall furnish technical and/or monitoring reports on the treatment and discharge of waste.
3. Prior to any modifications in this facility which would result in material change in the quality or quantity of wastewater discharged, or any material change in location of discharge, the discharger shall report in writing to the Regional Board.
4. Prior to any future change of ownership of this campground the discharger shall:
 - a. Specify as a condition of transfer that said sewage disposal areas must remain servient to the park, for the purpose of providing subsurface sewage disposal capacity, until such time as this park is connected to a municipal sewerage system.
 - b. Notify the succeeding owner, in writing, of the existence of the Order, and forward a copy of said correspondence to the Regional Board.
5. This Order supersedes Board Order No. 72 - 74.

I, Arthur Swajian, Executive Officer, do hereby certify the foregoing is a full, true, and correct copy of an Order adopted by the California Regional Water Quality Control Board, Colorado River Basin Region, on September 27, 1978 .


Executive Officer

CALIFORNIA REGIONAL WATER QUALITY CONTROL BOARD - 7



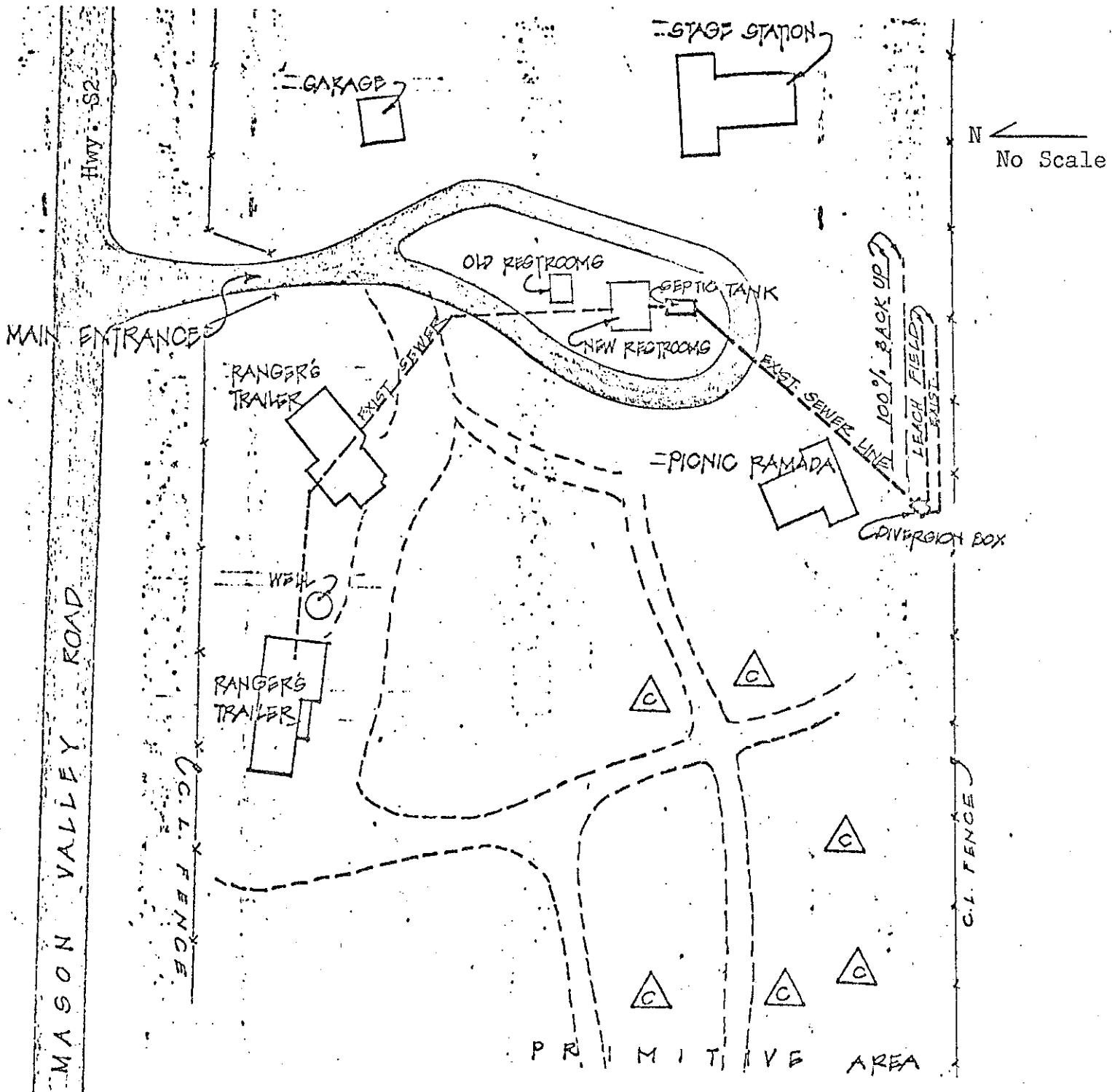
SITE MAP

VALLECITO COUNTY PARK

Southeast of Julian - San Diego County
Location of Discharge: NE $\frac{1}{4}$, NE $\frac{1}{2}$ of Section 10,
T14S, R6E, SBB&M

USGS Agua Caliente Springs 7.5 min. Topographic Map

Order No. 78-79



N
No Scale

ATTACHMENT A

VALLECITO COUNTY PARK

Southeast of Julian - San Diego County