

CALIFORNIA REGIONAL WATER QUALITY CONTROL BOARD
COLORADO RIVER BASIN REGION

ORDER NO. 80-25

WASTE DISCHARGE REQUIREMENTS
FOR
PALM SPRINGS ATAJO
City of Palm Springs - Riverside County

The California Regional Water Quality Control Board, Colorado River Basin Region, finds that:

1. Environmental Research and Development Corporation (hereinafter also referred to as the discharger), P.O. Drawer BB, Palm Springs, CA 92263, submitted a Report of Waste Discharge dated December 14, 1979.
2. The discharger proposes to discharge a design flow of 49,500 gallons-per-day of domestic sewage from a 97-unit residential development. The wastewater is to be discharged into a septic tank/seepage pit disposal system located in the SW 1/4 of Section 29, T4S, R5E, SBB&M.
3. The discharger informs that a dry sewer is to be installed, along with the system described in Finding No. 2 (above) to facilitate eventual connection to the proposed sewer line on Highway 111 and Dunn Road.
4. The discharger is reserving areas of sufficient size for possible future 100 percent replacement of the seepage pits.
5. There are no domestic wells within 200 feet of the proposed discharge facilities described in Findings No. 2 and 4 (above).
6. The Water Quality Control Plan for the West Colorado River Basin was adopted by the Board on April 10, 1975. The Basin Plan contains water quality objectives for the Coachella Hydrologic Subunit.
7. The beneficial uses of the groundwater of the Coachella Hydrologic Subunit are:
 - a. Municipal supply
 - b. Industrial supply
 - c. Agricultural supply

*Cancelled
5/18/83*

8. The Board has notified the discharger and interested agencies and persons of its intent to prescribe waste discharge requirements for the proposed discharge.
9. The Board in a public meeting heard and considered all comments pertaining to the proposed discharge.
10. The City of Palm Springs Planning Commission has approved an Environmental Impact Report on August 5, 1980 for this proposed residential development. This report indicates that this project would not have any significant adverse effects on water quality.

IT IS HEREBY ORDERED, the discharger shall comply with the following:

A. Discharge Specifications

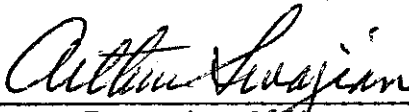
1. Neither the treatment nor the discharge of wastewater shall create a pollution or a nuisance as defined in Division 7 of the California Water Code.
2. No wastewater other than domestic sewage shall be discharged at this location.
3. Wastewater discharged subsurface shall be retained underground with no surfacing.
4. Adequate measures shall be taken to assure that flood or surface drainage waters do not erode or otherwise render portions of the discharge facilities inoperable.
5. Septic tank cleanings shall be discharged only by a duly authorized service.
6. Swimming pool wastewater shall not be discharged into the sewage disposal system.

B. Provisions

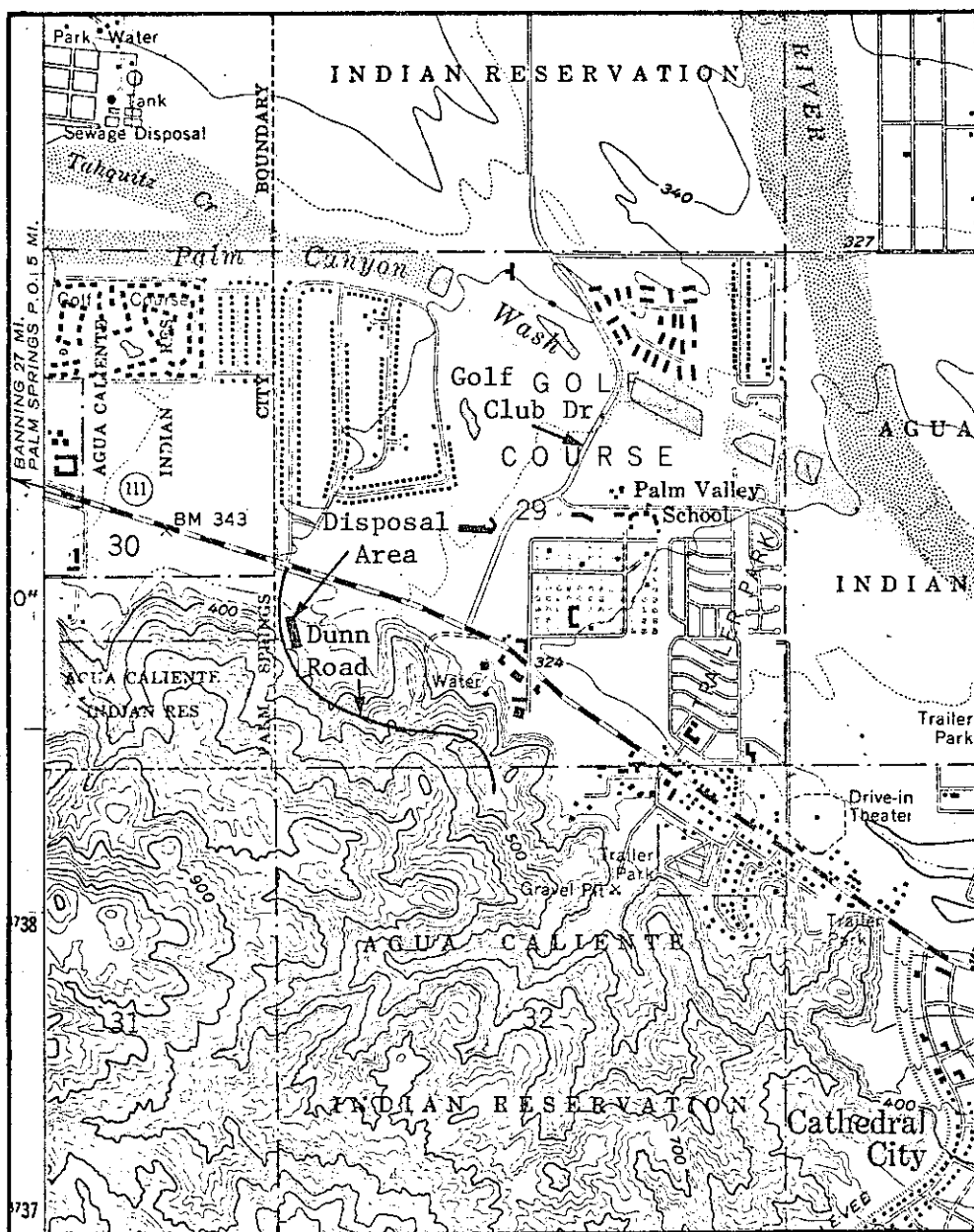
1. Sufficient land area shall be reserved for possible future 100 percent replacement of the seepage pits until such time as this complex is connected to a municipal sewerage system.
2. The subsurface sewage system should be designed and constructed to facilitate possible connection to the City of Palm Springs sewerage system when capacity is available.
3. Facilities shall be available to keep the system in operation in the event of commercial power failure.

4. Upon request from this Board's Executive Officer, the discharger shall furnish technical and/or monitoring reports on the treatment and discharge of waste.
5. Prior to any modifications in this facility which would result in material change in the quality or quantity of wastewater discharged, or any material change in location of discharge, the discharger shall report in writing to the Regional Board.
6. Prior to any change of management or ownership of the sewage collection and disposal system (such as to a homeowners' association) the discharger shall:
 - a. Specify as a condition of transfer that the area utilized for sewage collection and disposal, and replacement thereof is set forth in Provision B.1 (above) remain servient to the development until such time as this development is connected to a municipal sewerage system.
 - b. Notify the succeeding owner, in writing, of the existence of the Order, and forward a copy of said correspondence to the Regional Board.

I, Arthur Swajian, Executive Officer, do hereby certify that the foregoing is a full, true, and correct copy of an Order adopted by the California Regional Water Quality Control Board, Colorado River Basin Region, on September 24, 1980.



Executive Officer

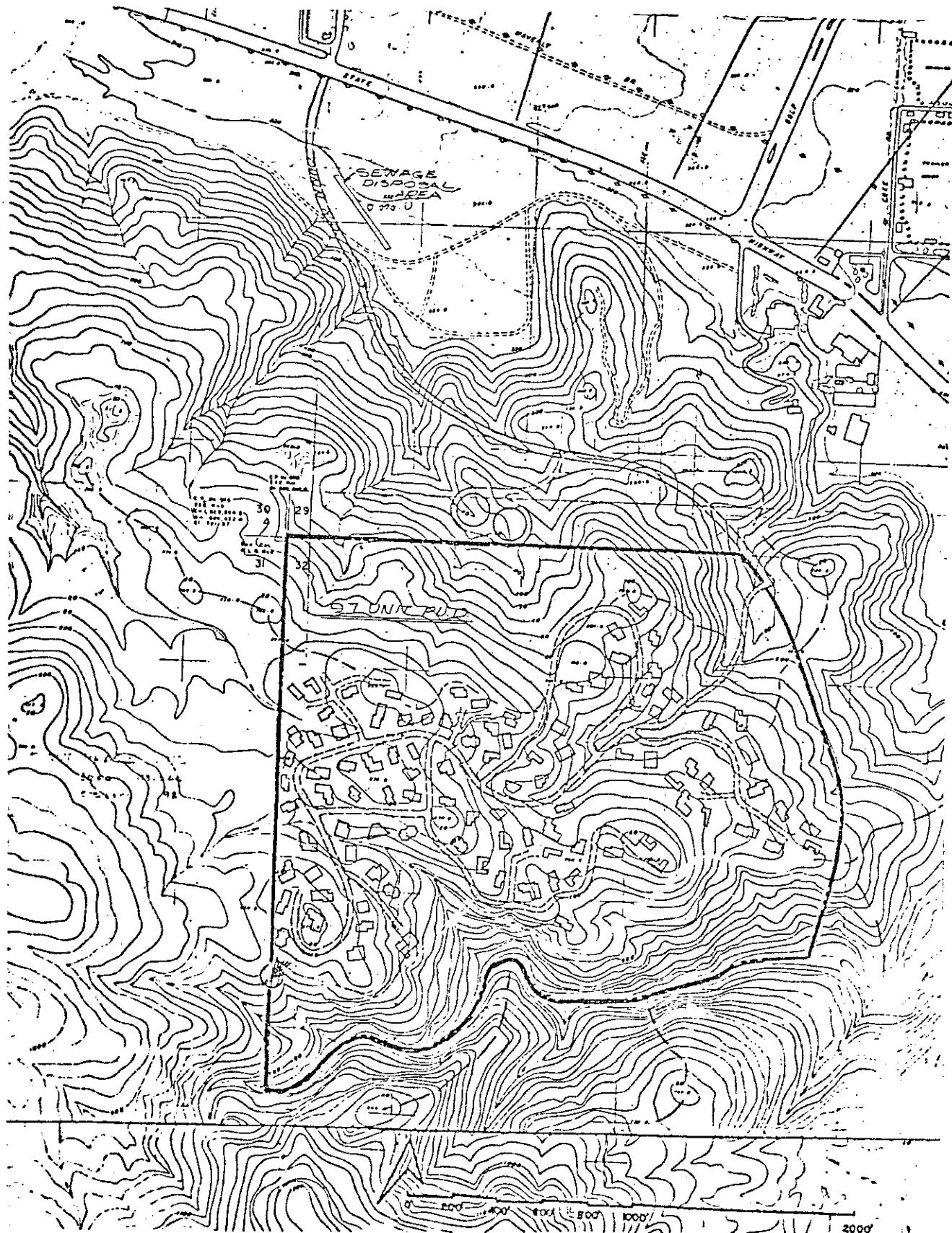


SITE MAP

PALM SPRINGS ATAJO

City of Palm Springs - Riverside County

Discharge Location: Portion of the SW 1/4 of Section 29, T4S, R5E, SBB&M
USGS Cathedral City 7.5 min. Topographic Map



SITE MAP 2
PALM SPRINGS ATAJO
City of Palm Springs - Riverside County