

CALIFORNIA REGIONAL WATER QUALITY CONTROL BOARD  
COLORADO RIVER BASIN REGION

MONITORING AND REPORTING PROGRAM NO. 80-35 (REVISION NO. 1)

FOR

COACHELLA VALLEY WATER DISTRICT  
IMPROVEMENT DISTRICT NO. 58  
Northwest of Indio - Riverside County

Location of Discharge: NE 1/4, NE 1/4 of Section 4, T5S, R7E, SBB&M

EFFLUENT MONITORING

Wastewater contained in percolation basins shall be monitored for the following:

<u>Constituents</u>	<u>Unit</u>	<u>Type of Sample</u>	<u>Sampling Frequency</u>
Total Dissolved Solids	mg/l	Grab	Quarterly
Chloride (Cl)	mg/l	Grab	Quarterly
Total Nitrogen (N)	mg/l	Grab	Quarterly
Sulfate (SO <sub>4</sub> )	mg/l	Grab	Quarterly
Fluoride (F)	mg/l	Grab	Quarterly
Flow	Gallons/ day	Flow measurement	Daily*

\*For each day with average monthly flow calculated.

WATER SUPPLY MONITORING

The water supply delivered to the community shall be monitored for the following constituents and the reported level of each constituent shall be a weighted average of all sources:

Total Dissolved Solids	mg/l	Grab	Semiannual
Chloride (Cl)	mg/l	Grab	Semiannual
Nitrate (N)	mg/l	Grab	Semiannual
Sulfate (SO <sub>4</sub> )	mg/l	Grab	Semiannual
Fluoride (F)	mg/l	Grab	Semiannual

REPORTING

Monitoring data shall be submitted to the Regional Board as follows:

Semiannual reports - by January 15 and July 15 of each year

Quarterly reports - by January 15, April 15, July 15, and October 15 of each year.

Daily reports - by the 15th of the following month.

The discharger shall implement the above monitoring program within 30 days of the commencement of discharge.

Forward monitoring reports to:

California Regional Water Quality Control Board  
Colorado River Basin Region  
73-271 Highway 111, Suite 21  
Palm Desert, CA 92260

ORDERED BY:

Arthur Swajian  
Executive Officer

Nov 13, 1980  
Date

CALIFORNIA REGIONAL WATER QUALITY CONTROL BOARD  
COLORADO RIVER BASIN REGION

ORDER NO. 80-35

WASTE DISCHARGE REQUIREMENTS  
FOR  
COACHELLA VALLEY WATER DISTRICT  
IMPROVEMENT DISTRICT NO. 58  
Northwest of Indio - Riverside County

The California Regional Water Quality Control Board, Colorado River Basin Region, finds that:

1. Coachella Valley Water District (hereinafter also referred to as the discharger), P.O. Box 1058, Coachella, CA 92236, submitted a Report of Waste Discharge dated January 21, 1980.
2. The discharger proposes to discharge a design flow of 700,000 gallons-per-day of domestic sewage into four mechanically aerated lined basins. The oxidized wastewater would then flow into two lined settling basins followed by four percolation basins for final subsurface disposal. The percolation basins are to have a maximum operating depth of two feet and will be designed to contain a one day influent volume. This treatment facility is to be located in the NE $\frac{1}{4}$  of the NE $\frac{1}{4}$  of Section 4, T5S, R7E, SBB&M.
3. The Water Quality Control Plan for the West Colorado River Basin was adopted by the Board on April 10, 1975. The Basin Plan contains water quality objectives for Coachella Hydrologic Subunit.
4. The beneficial uses of the groundwaters of the Coachella Hydrologic Subunit are:
  - a. Municipal supply
  - b. Industrial supply
  - c. Agricultural supply
5. The nearest existing well (irrigation well) is located approximately 114 feet outside the property boundary and 360 feet from the percolation basins.
6. The Board has notified the discharger and interested agencies and persons of its intent to prescribe waste discharge requirements for the proposed discharge.

*Superseded  
by 85-37  
6/22/85*

7. The Board in a public meeting heard and considered all comments pertaining to the discharge.
8. Coachella Valley Water District adopted an Environmental Impact Report for this project on November 27, 1979. This report indicates that the proposed treatment facilities would not have any significant adverse effects on water quality.

IT IS HEREBY ORDERED, Coachella Valley Water District shall comply with the following:

A. Discharge Specifications

1. Neither the treatment nor the discharge of wastewater shall create a pollution or a nuisance as defined in Division 7 of the California Water Code.
2. No wastewater other than domestic sewage shall be discharged at this location.
3. A minimum freeboard depth of at least two feet shall be maintained in the basins.
4. Adequate measures shall be taken to assure that unauthorized persons and animal pets are effectively excluded from contact with the discharge.
5. Adequate protective works shall be provided to assure that a flood which would be expected to occur on a frequency of once in a 100 year period, would not erode or otherwise render portions of the treatment and discharge facilities inoperable.
6. Treated or untreated sludge, or similar solid waste materials, shall not be discharged to or enter any drainage channels.
7. There shall be no surface flow of wastewater away from the discharge facilities.
8. Adequate protective facilities shall be provided to insure that blow sand will not accumulate in the treatment and disposal facilities.

9. Treatment and disposal by ponding shall be conducted in such manner that there shall be no stranded or exposed sewage solids.
10. Facilities shall be available to handle wastewater in the event of commercial power failure.
11. The discharge shall not adversely affect the quality of receiving waters that are usable for domestic purposes.
12. There shall be no discharge of wastewater within 500 feet of any domestic water supply well.
13. Treatment and discharge of wastewater shall be conducted by technical procedures which will maintain an aerobic environment.
14. Infiltration facilities shall be maintained and operated so as to maximize infiltration and minimize the increase in salinity of the infiltrating wastewater.
15. The maximum daily flow shall not exceed 0.70 million gallons per-operating-day.
16. Increase of chemical constituents in the treated wastewater over that contained in the community water supply shall not exceed the following increments:

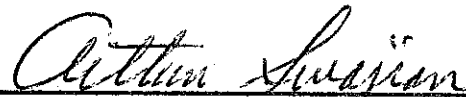
<u>Constituent</u>	<u>Increment (mg/l)</u>
Chloride (Cl)	50
Total Dissolved Solids	300
Sulfate (SO <sub>4</sub> )	30
Fluoride (F)	0.3

#### B. Provisions

1. Prior to any modifications in this facility which would result in material change in the quality or quantity of wastewater discharged, or any material change in location of discharge, the discharger shall report in writing to the Regional Board.

2. This Order includes the attached "Standard Provisions and Reporting Requirements for Publicly Owned Sewage Treatment Facilities."
3. The discharger shall comply with "Monitoring and Reporting Program No. 80-35" and future revisions thereto, as specified by the Executive Officer.
4. In the event of any change in operation, or in control or ownership of land and/or waste disposal facilities owned or controlled by the discharger, the discharger shall:
  - a. Notify this Board of such change; and
  - b. Notify the succeeding owner or operator by letter of the existence of this Order, a copy of which shall be filed with this Board.

I, Arthur Swajian, Executive Officer, do hereby certify the foregoing is a full, true, and correct copy of an Order adopted by the California Regional Water Quality Control Board, Colorado River Basin Region, on May 21, 1980.



Executive Officer

CALIFORNIA REGIONAL WATER QUALITY CONTROL BOARD  
COLORADO RIVER BASIN REGION

MONITORING AND REPORTING PROGRAM NO. 80-35  
FOR

COACHELLA VALLEY WATER DISTRICT  
IMPROVEMENT DISTRICT NO. 58  
Northwest of Indio - Riverside County

Location of Discharge: NE $\frac{1}{4}$ , NE $\frac{1}{4}$  of Section 4, T5S, R7E, SBB&M

EFFLUENT MONITORING

Wastewater contained in percolation basins shall be monitored for the following:

<u>Constituents</u>	<u>Unit</u>	<u>Type of Sample</u>	<u>Sampling Frequency</u>
Total Dissolved Solids	mg/l	Grab	Quarterly
Chloride (Cl)	mg/l	Grab	Quarterly
Total Nitrogen (N)	mg/l	Grab	Quarterly
Sulfate (SO <sub>4</sub> )	mg/l	Grab	Quarterly
Fluoride (F)	mg/l	Grab	Quarterly
Flow	Gallons/ day	Flow measurement	Daily*

\*For each day with average monthly flow calculated.

WATER SUPPLY MONITORING

The water supply delivered to the community shall be monitored for the following constituents and the reported level of each constituent shall be a weighted average of all sources:

Total Dissolved Solids	mg/l	Grab	Semiannual
Chloride (Cl)	mg/l	Grab	Semiannual
Nitrate (N)	mg/l	Grab	Semiannual
Sulfate (SO <sub>4</sub> )	mg/l	Grab	Semiannual
Fluoride (F)	mg/l	Grab	Semiannual

*Superceded  
11/13/80*

REPORTING

Monitoring data shall be submitted to the Regional Board as follows:

Semiannual reports - by January 30 and June 30 of each year.

Quarterly reports - by January 15, April 15, July 15, and October 15 of each year.

Daily reports - by the 15th day of the following month.

The discharger shall implement the above monitoring program within 30 days of the commencement of discharge.

Forward monitoring reports to:

California Regional Water Quality Control Board  
Colorado River Basin Region  
73-271 Highway 111, Suite 21  
Palm Desert, CA 92260

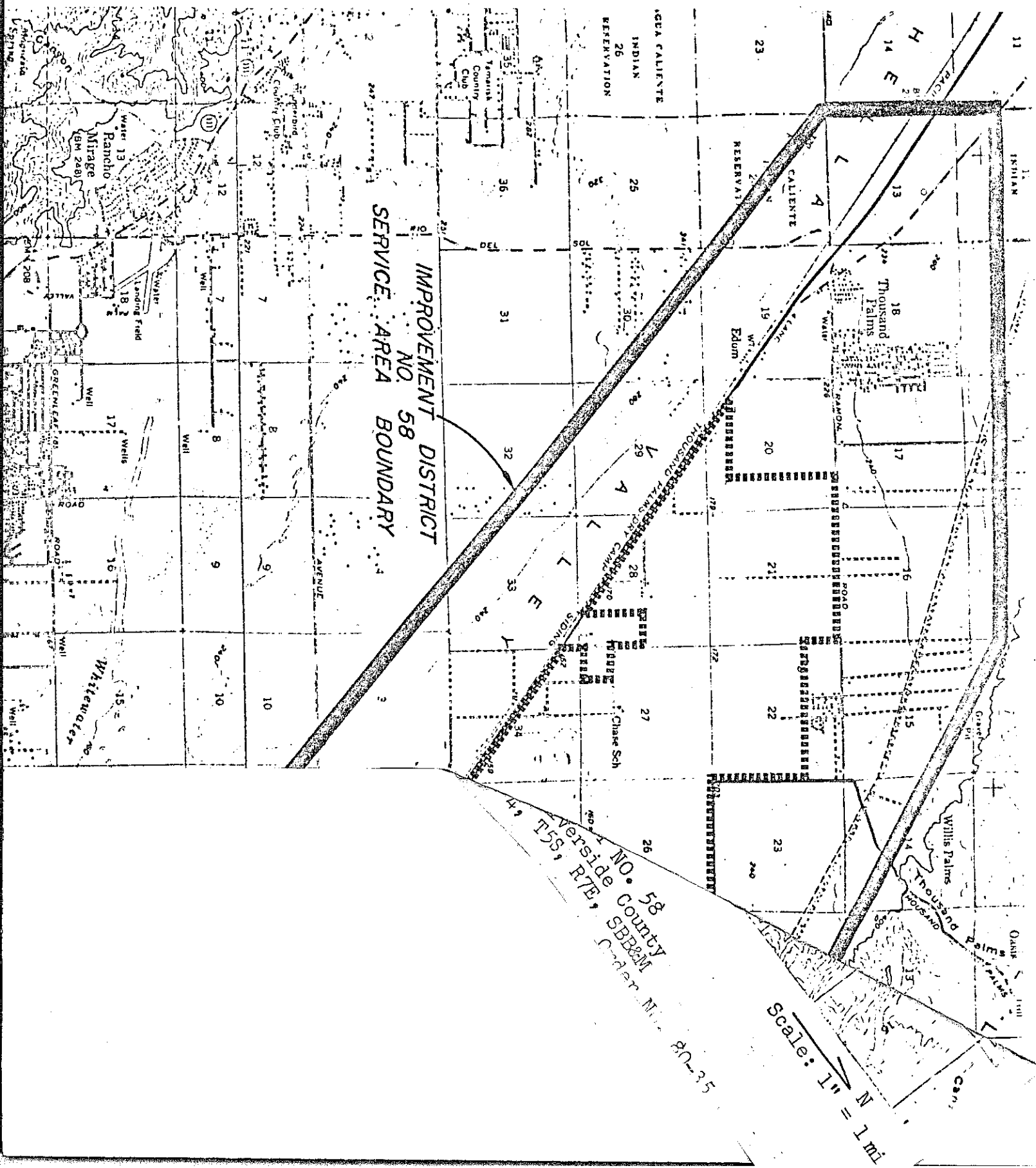
ORDERED BY

Atton Serjian  
Executive Officer

May 21, 1980  
Date

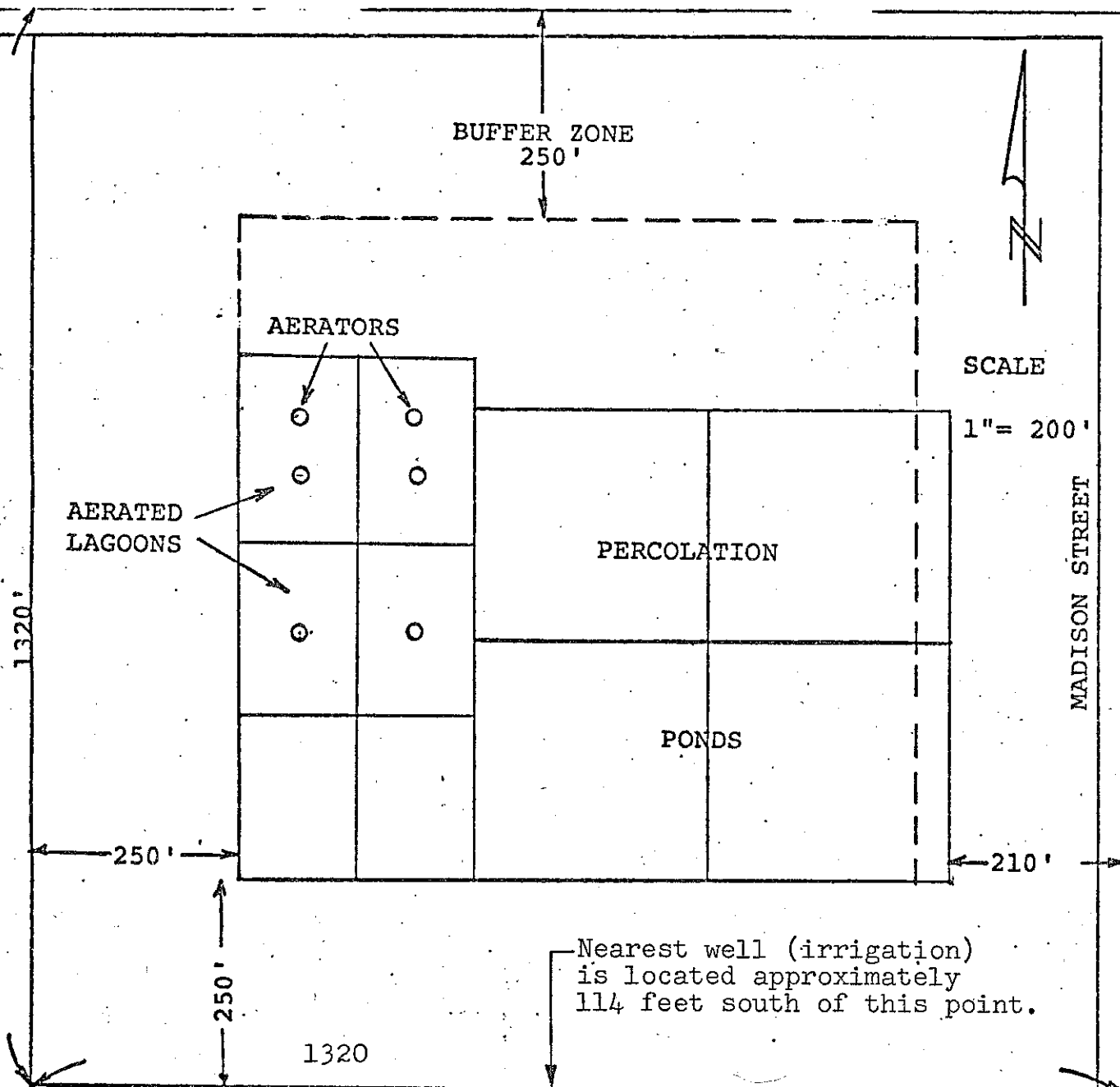


# CALIFORNIA REGIONAL WATER QUALITY CONTROL BOARD - 7



CALIFORNIA REGIONAL WATER QUALITY CONTROL BOARD -7

38th. AVENUE



SITE MAP NO. 2  
COACHELLA VALLEY WATER DISTRICT  
IMPROVEMENT DISTRICT NO. 58  
Northwest of Indio - Riverside County

Order No. 80-35