

CALIFORNIA REGIONAL WATER QUALITY CONTROL BOARD
COLORADO RIVER BASIN REGION

ORDER NO. 82-23

WASTE DISCHARGE REQUIREMENTS
FOR
FIRST NATIONAL LAUNDROMAT OF JOSHUA TREE
Joshua Tree - San Bernardino County

The California Regional Water Quality Control Board, Colorado River Basin Region, finds that:

1. Williams, Williams and Huntington (hereinafter also referred to as the discharger), 7169 Mohawk Trail, Yucca Valley, CA 92284 submitted a Report of Waste Discharge dated March 2, 1982.
2. The discharger proposes to expand washing facilities at a laundromat resulting in a maximum discharge of 15,500 gallons-per-day of washwater. The wastewater is discharged into a large lint trap, and then flows into a septic tank and three seepage pits. The site is located in the NE 1/4 of the NE 1/4 of Section 35, T1N, R6E, SBB&M. Domestic sewage from a restroom is discharged into a separate septic tank/seepage pit system.
3. The discharger proposes to expand the disposal facilities by installing a seepage pit approximately 90 feet deep. All of the pits have sufficient area reserved for 100 percent replacement capacity.
4. There are no domestic wells within 200 feet of the proposed discharge facilities described in Findings No. 2 and 3 (above). However, there is a well about 1/4 mile northeast of the site that has a standard water surface estimated at 424 feet below ground surface.
5. The discharge from this laundromat has been subject to waste discharge requirements adopted in Board Order No. 74-109.
6. The Water Quality Control Plan for the West Colorado River Basin Region was adopted on April 10, 1975. The Basin Plan contains water quality objectives for the Joshua Tree Hydrologic Unit.
7. The beneficial uses of the ground water of the Joshua Tree Hydrologic Unit are:
 - a. Municipal supply
 - b. Industrial supply
 - c. Agricultural supply
8. The Board has notified the discharger and interested agencies and persons of its intent to update waste discharge requirements for the discharge.

*Suggested by
87-20,
1/21/87*

9. The Board in a public meeting heard and considered all comments pertaining to the discharge.
10. This wastewater disposal system constitutes an ongoing project in accordance with the provisions of the California Environmental Quality Act (Public Resources Code Section 21000 et seq.) and Title 23, California Administrative Code, Chapter 3, Subchapter 17, Section 2715, because governmental approvals on or after April 5, 1973, do not involve a greater degree of responsibility or control over such (activity) than the governmental approvals received prior to that date.

IT IS HEREBY ORDERED, the discharger shall comply with the following:

A. Discharge Specifications

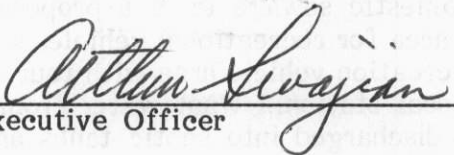
1. Neither the treatment nor the discharge of wastewater shall create a pollution or a nuisance as defined in Division 7 of the California Water Code.
2. No wastewater other than domestic sewage and laundry wastewater shall be discharged at this location.
3. Domestic sewage shall not be discharged via the laundry disposal facilities.
4. Wastewater discharged subsurface shall be retained underground with no surfacing.
5. Adequate measures shall be taken to assure that flood or surface drainage waters do not erode or otherwise render portions of the discharge facilities inoperable.
6. Septic tank and lint trap cleanings shall be discharged only by a duly authorized service.
7. Discharge of water softener brine is prohibited at this location.

B. Provisions

1. Sufficient land area shall be reserved for possible future 100 percent replacement of the laundry seepage pits until such time as this laundromat is connected to a municipal sewerage system.
2. This Order includes the attached "Monitoring and Reporting Program No. 82-23, and future revisions thereto, as specified by the Executive Officer.
3. Prior to any modifications in this facility which would result in material change in the quality or quantity of wastewater discharged, or any material change in location of discharge, the discharger shall report in writing to the Regional Board.

4. Prior to any change of ownership of this complex, the discharger shall:
 - a. Specify as a condition of transfer that the area specified in Provision B.1. (above) remain servient to the development for the purpose of providing additional subsurface laundry disposal capacity, until such time as this complex is connected to a municipal sewerage system.
 - b. Notify the succeeding owner, in writing, of the existence of this Order, and forward a copy of said correspondence to the Regional Board.
5. This Order supersedes Board Order No. 74-109.

I, Arthur Swajian, Executive Officer, do hereby certify the foregoing is a full, true and correct copy of an Order adopted by the California Regional Water Quality Control Board, Colorado River Basin Region, on May 19, 1982.


Executive Officer

CALIFORNIA REGIONAL WATER QUALITY CONTROL BOARD
COLORADO RIVER BASIN REGION

MONITORING AND REPORTING PROGRAM NO. 82-23
FOR
FIRST NATIONAL LAUNDROMAT OF JOSHUA TREE
Joshua Tree - San Bernardino County

Location of Discharge: NE $\frac{1}{4}$, NE $\frac{1}{4}$ of Section 35, T1N, R6E, SBB&M.

MONITORING

The discharger shall report to the Regional Board concerning the following:

1. Water meter reading to determine discharge flow - monthly reporting frequency.

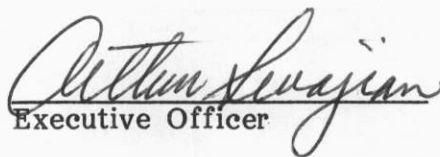
REPORTING

Monthly monitoring reports shall be submitted to the Regional Board on a quarterly basis - by January 15, April 15, July 15 and October 15 of each year.

Submit monitoring reports to:

California Regional Water Quality Control Board
Colorado River Basin Region
73-271 Highway 111, Suite 21
Palm Desert, CA 92260

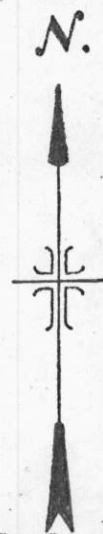
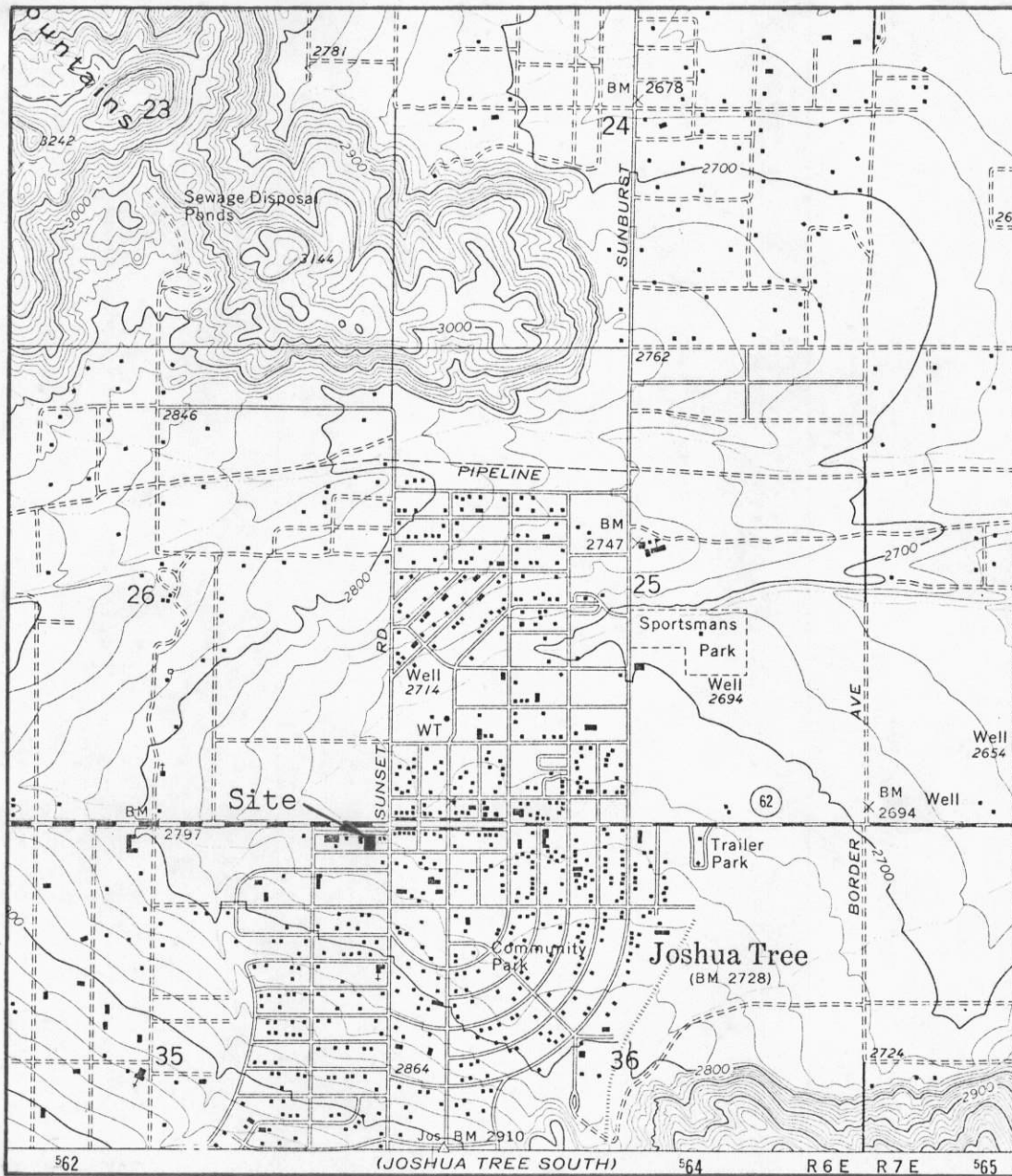
ORDERED BY


Executive Officer

May 19, 1982

Date

CALIFORNIA REGIONAL WATER QUALITY CONTROL BOARD - 7



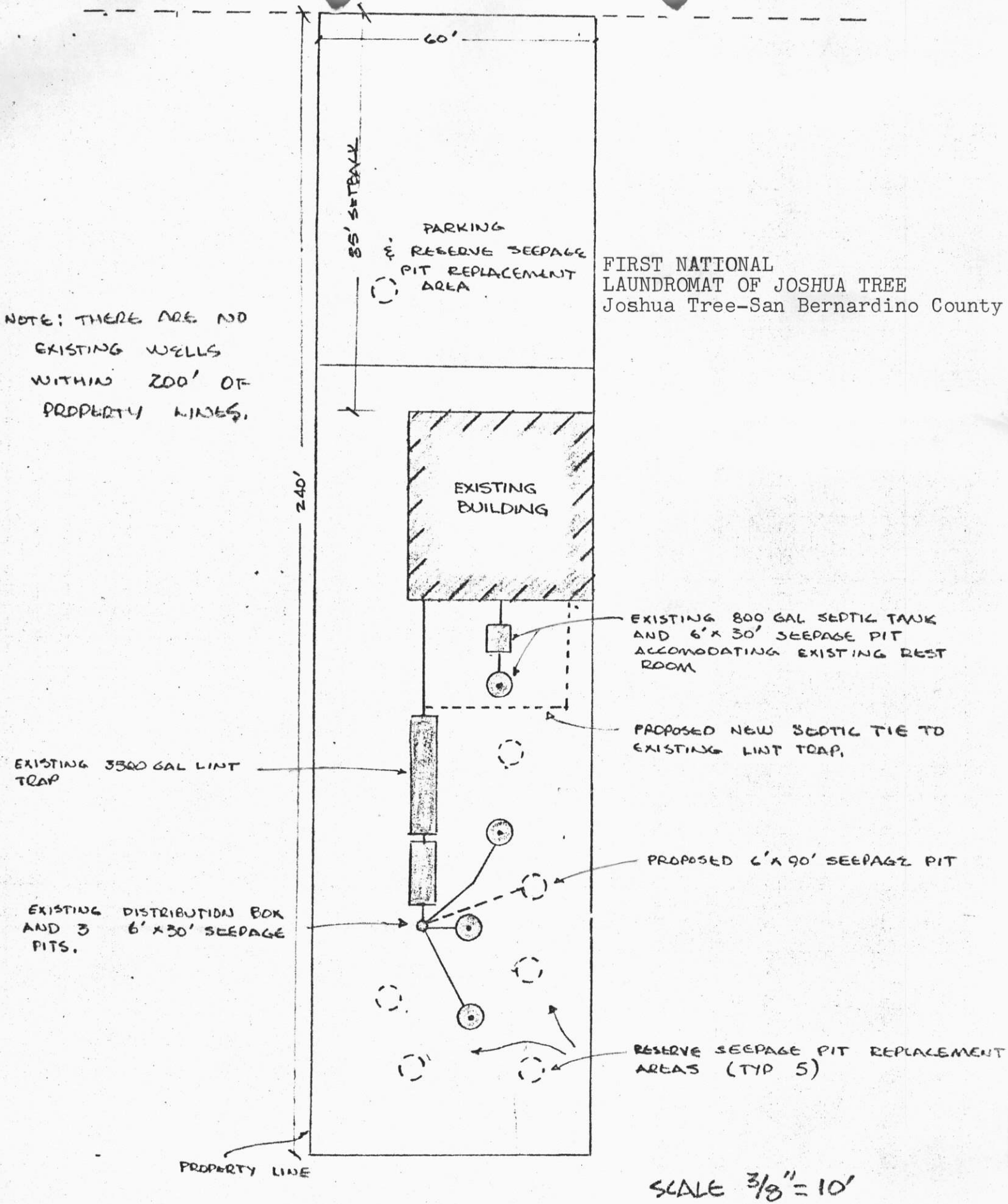
Scale:
1" = 2,000'

SITE MAP

FIRST NATIONAL LAUNDROMAT OF JOSHUA TREE
Joshua Tree - San Bernardino County
Portion of NE 1/4, NE 1/4 of Section 35, T1N, R6E, SBB&M
USGS Joshua Tree North 7.5 min. Topographic Map

Order No. 82-23

STATE ROUTE 62



PRELIMINARY WASTEWATER DISPOSAL FACILITIES SKETCH