

CALIFORNIA REGIONAL WATER QUALITY CONTROL BOARD
COLORADO RIVER BASIN REGION

ORDER NO. 83-105

WASTE DISCHARGE REQUIREMENTS
FOR
THE GREAT OUTDOOR AMERICAN ADVENTURE
CUYAMACA RESORT CAMPGROUND
Southeast of Julian - San Diego County

The California Regional Water Quality Control Board, Colorado River Basin Region, finds that:

1. The Great Outdoor American Adventure, Inc., (hereinafter also referred to as the discharger), 23206 Woodinville Snohomish Highway, Woodinville, Washington 98072 submitted a Report of Waste Discharge, dated August 12, 1983, for an expansion of the discharge facilities.
2. The discharger proposes to discharge a maximum of 40,000 gallons-per-day of domestic sewage, with the addition of 252 campsites, seven restrooms, and three RV dumpstations to an existing campground and recreational vehicle park having 49 RV spaces, a recreation room, an office building with restrooms, 103 campsites, two restrooms and an RV dumpstation. The wastewater from the existing facilities is discharged into two septic tank/leach line systems, and the wastewater from the proposed facilities is to be discharged into five (5) septic tank/leach line systems. The areas for sewage disposal are located in the SE $\frac{1}{4}$ of Section 15 and the NE $\frac{1}{4}$ of Section 22, T13S, R4E, SBB&M. The park is designed to have the 355 campsites unsewered, and the dumpstations are to drain into the sewage disposal systems.
3. The discharger is reserving areas of sufficient size for possible future 100 percent replacement of the leach lines.
4. There are no domestic wells within 200 feet of the proposed discharge facilities described in Findings No. 2 and 3 above.
5. The discharge from this campground and RV park has been subject to waste discharge requirements adopted in Board Order No. 78-68.
6. The Water Quality Control Plan for the West Colorado River Basin was adopted by the Board on April 10, 1975. The Basin Plan contains water quality objectives for the Anza-Borrego Hydrologic Unit.
7. The beneficial uses of the ground waters of the Anza-Borrego Hydrologic Unit are:
 - a. Municipal supply
 - b. Industrial supply
 - c. Agricultural supply

*Superseded by
Bd. Ord. # 94-009
3/15/94*

8. The Board has notified the discharger and interested agencies and persons of its intent to update waste discharge requirements for the discharge.
9. The Board in a public meeting heard and considered all comments pertaining to the discharge.
10. The San Diego County Planning and Environmental Review Board approved on September 8, 1983 the Final Environmental Impact Report for this proposed expansion of this campground and park. The Regional Board has reviewed this report and finds no significant impact pursuant to Section 15063 (b) of Title 24, California Administrative Code. The below waste discharge requirements are designed to assure against any significant adverse effects on water quality.

IT IS HEREBY ORDERED, the discharger shall comply with the following:

A. Discharge Specifications

1. Neither the treatment nor the discharge of wastewater shall create a pollution or a nuisance as defined in Division 7 of the California Water Code.
2. No wastewater other than domestic sewage shall be discharged at this location.
3. Wastewater discharged subsurface shall be retained underground with no surfacing.
4. Adequate measures shall be taken to assure that flood or surface drainage waters do not erode or otherwise render portions of the discharge facilities inoperable.
5. Septic tank cleanings shall be discharged only by a duly authorized service.

B. Provisions

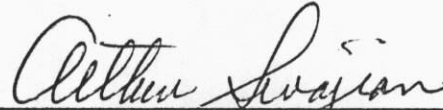
1. Sufficient land area shall be reserved for possible future 100 percent replacement of the proposed leach fields, until such time as this campground and park complex is connected to a municipal sewerage system.
2. Upon request from this Board's Executive Officer, the discharger shall furnish technical and/or monitoring reports on the treatment and discharge of wastes.
3. Prior to any modifications in this facility which would result in material change in the quality or quantity of wastewater discharged, or any material change in location of discharge, the discharger shall report in writing to the Regional Board.

4. Prior to any change of ownership of this campground and recreational vehicle park, the discharger shall:

- a. Specify as a condition of transfer that the area specified in Provision B.1. (above) remain servient to the complex for the purpose of providing additional subsurface sewage disposal capacity, until such time as the facilities are connected to a municipal sewerage system.
- b. Notify the succeeding owner, in writing, of the existence of this Order, and forward a copy of said correspondence to the Regional Board.

5. This Order supersedes Board Order No. 78-68.

I, Arthur Swajian, Executive Officer, do hereby certify the foregoing is a full, true, and correct copy of an Order adopted by the California Regional Water Quality Control Board, Colorado River basin Region, on November 16, 1983.



Executive Officer

**CALIFORNIA REGIONAL WATER QUALITY CONTROL BOARD
COLORADO RIVER BASIN REGION**

**MONITORING AND REPORTING PROGRAM NO. 83-105
FOR
AMERICAN ADVENTURE - CUYAMACA RESORT
Southeast of Julian - San Diego County**

Location: Portion of the SE $\frac{1}{4}$ of Section 15 and portion of the NE $\frac{1}{4}$ of Section 22, T13S,
R4E, SBB&M

MONITORING

This discharger shall submit an annual status report on the following:

1. Number of RV spaces, campsites and restrooms presently connected to the sewerage system.
2. List any proposed changes in the sewage disposal facilities during the upcoming year.

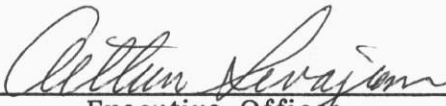
REPORTING

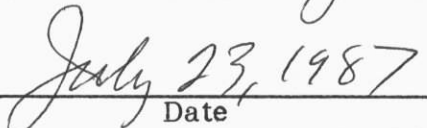
1. Annual reports are to be submitted by January 15th of each year to:

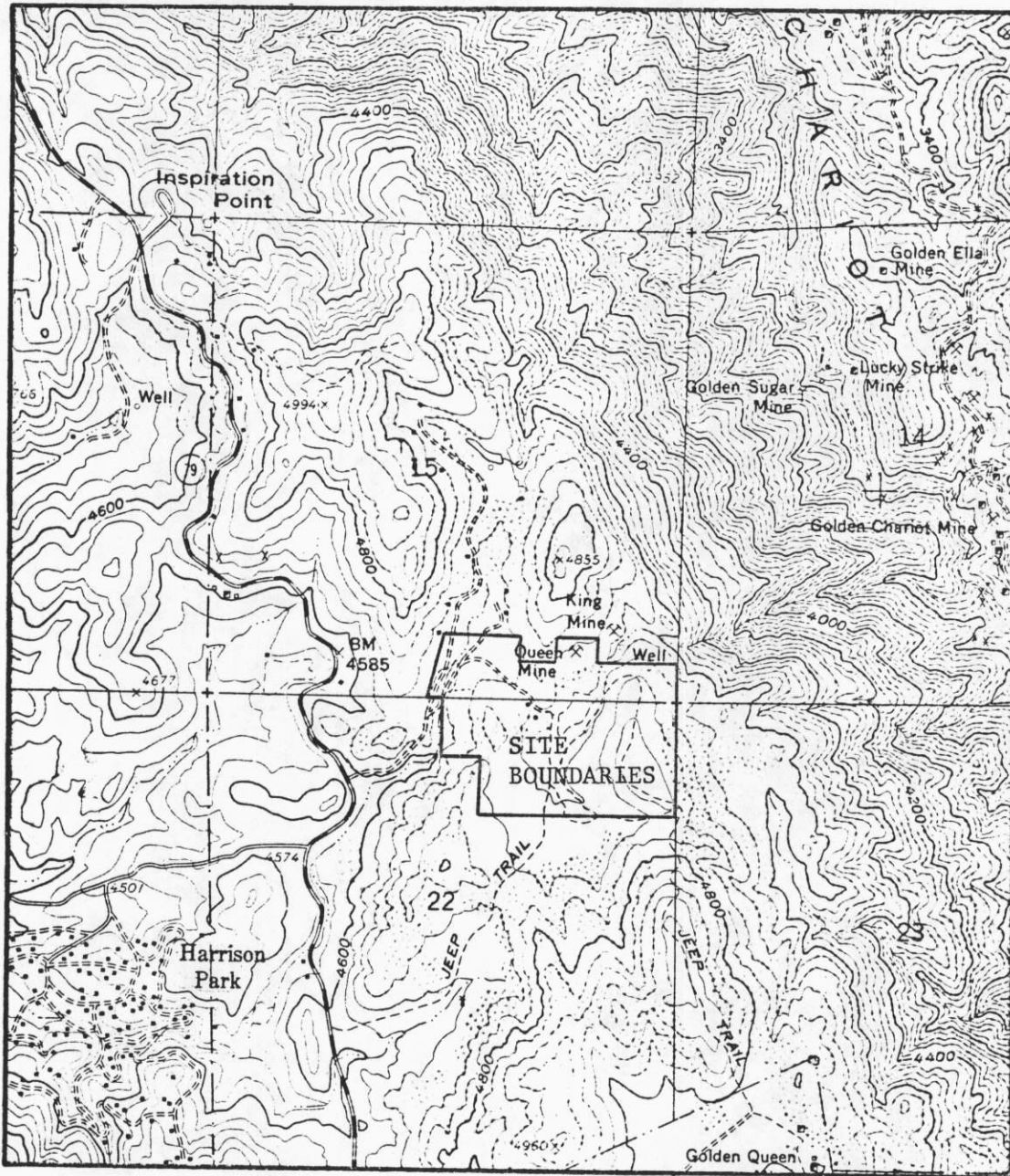
California Regional Water Quality Control Board
Colorado River Basin Region
73-271 Highway 111, Suite 21
Palm Desert, CA 92260

2. Report immediately any surfacing of wastewater or other failures of the system by telephone and follow-up by letter.

Ordered By:


Executive Officer


Date



SITE MAP

THE GREAT OUTDOOR AMERICAN ADVENTURE
CUYAMACA RESORT CAMPGROUND
Southeast of Julian - San Diego County
SE 1/4 of Section 15 and NE 1/4 of Section 22, T13S, R4E, SBB&M
USGS Julian 7.5 min. Topographic Map

Order No. 83-105