

CALIFORNIA REGIONAL WATER QUALITY CONTROL BOARD
COLORADO RIVER BASIN REGION

ORDER NO. 83-58

WASTE DISCHARGE REQUIREMENTS
FOR
TWELVE & TWELVE RITE PUMPING SERVICE
North of Thousand Palms - Riverside County

The California Regional Water Quality Control Board, Colorado River Basin Region, finds that:

1. Robert E. Swindell (hereinafter also referred to as the discharger), P. O. Box 154, Thousand Palms, California 92276, submitted updated information on the discharge of waste dated April 2, 1983.
2. The discharger is discharging a maximum of 22,500 gallons-per-month of domestic sewage from pumping out septic tanks, seepage pits and cesspools.
3. The discharger discharges the waste (collected in a 1,500 gallon capacity tank truck) by spreading it over the surface of a 10-acre natural desert field located in the SE $\frac{1}{4}$, NE $\frac{1}{4}$, NE $\frac{1}{4}$ of Section 7, T4S, R6E, SBB&M.
4. The discharge at this site has been subject to waste discharge requirements adopted in Board Order No. 77-2.
5. The discharge area is underlain by recent alluvial fan deposits consisting of boulders, gravel, sand, silt and the Ocotillo Conglomerate. The reported depth to water from records of nearby wells in Thousand Palms is approximately 100 feet below ground surface.
6. The Water Quality Control Plan for the West Colorado River Basin was adopted by the Board on April 10, 1975. The Basin Plan contains water quality objectives for the Coachella Hydrologic Subunit.
7. The beneficial uses of the ground waters of the Coachella Hydrologic Subunit are:
 - a. Municipal supply
 - b. Industrial supply
 - c. Agricultural supply
8. The Board has notified the discharger and interested agencies and persons of its intent to update waste discharge requirements for the discharge.
9. The Board in a public meeting heard and considered all comments pertaining to the discharge.

*Rescinded
11/24/89*

10. This sewage disposal site constitutes an ongoing project in accordance with provisions of the California Environmental Quality Act (Public Resources Code Section 21000 et. seq.), and the State Guidelines because the governmental approvals on or after April 5, 1973, do not involve a greater degree of responsibility or control over such activity than the governmental approvals received prior to that date.

IT IS HEREBY ORDERED, the discharger shall comply with the following:

A. Discharge Specifications

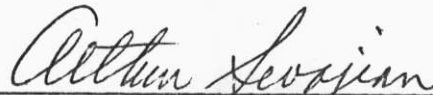
1. Neither the discharge of wastewater nor the discharge operations shall create a pollution or a nuisance as defined in Division 7 of the California Water Code.
2. No wastewater other than that specified in Finding No. 2 (above) shall be discharged at the designated land disposal site.
3. The disposal area shall be protected by natural or artificial features so as to assure protection from any washout and from inundation which could occur as a result of floods.
4. The discharged materials shall be physically incorporated into the soil media at least twice weekly, so as to prevent significant accumulation of wastes on the ground surface.
5. There shall be no concentration of waste within limited areas of the reported disposal site.
6. There shall be no ponding of discharged waste effluent or surface flow of this wastewater away from the designated disposal area.
7. The maximum average discharge shall not exceed 22,500 gallons-per-month.
8. Action should be taken to minimize public access into disposal areas.

B. Provisions

1. Prior to any substantial change in the quality or quantity of wastes discharged or the location of discharge, the discharger shall report in writing to the Regional Board.
2. The discharger shall comply with the Monitoring and Reporting Program No. 83-58", and future revisions thereto, as specified by the Executive Officer.
3. Prior to any proposed change in use, or in control or ownership of the land used as the discharge area, the discharger shall:

- a. Report in writing to the Regional Board.
 - b. Notify the succeeding owner, in writing, of the existence of this Order, and forward a copy of said correspondence to the Regional Board.
4. Nothing contained herein shall be construed to allow the discharger to discharge wastes onto any land which is not under his ownership or control.
 5. This Order supersedes Board Order No. 77-2.

I, Arthur Swajian, Executive Officer, do hereby certify the foregoing is a full, true and correct copy of an Order adopted by the California Regional Water Quality Control Board, Colorado River Basin Region, on July 13, 1983.



Executive Officer

CALIFORNIA REGIONAL WATER QUALITY CONTROL BOARD
COLORADO RIVER BASIN REGION

MONITORING AND REPORTING PROGRAM NO. 83-58
FOR
TWELVE & TWELVE RITE PUMPING SERVICE
North of Thousand Palms - Riverside County

Location of Discharge: SE 1/4, NE 1/4, NE 1/4, Section 7, T4S, R6E, SBB&M.

MONITORING

The discharger shall report to the Regional Board concerning the following:

ITEM

1. Volume of waste discharged during quarter. This information may be reported as the number of truckloads and an estimate of the average volume per truckload (in gallons).

REPORTING

The quarterly reports shall be submitted by January 15, April 15, July 15, and October 15 of each year.

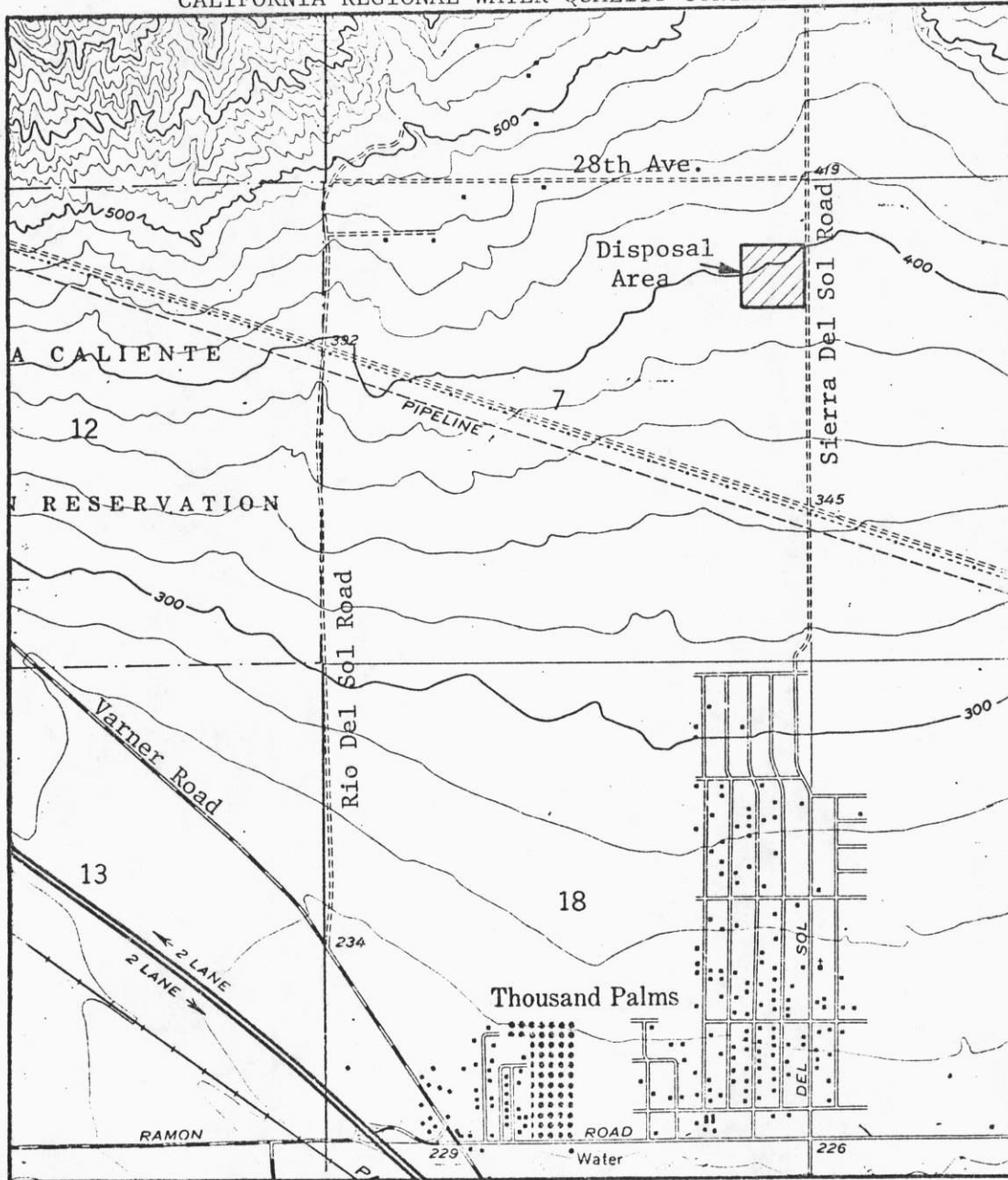
Mail reports to:

California Regional Water Quality Control Board
Colorado River Basin Region
73-271 Highway 111, Suite 21
Palm Desert, CA 92260

ORDERED BY:

Arthur Swajian
Executive Officer
July 23, 1983
Date

CALIFORNIA REGIONAL WATER QUALITY CONTROL BOARD - 7



Scale:
1" = 2,000'

SITE MAP

TWELVE & TWELVE RITE PUMPING SERVICE
 North of Thousand Palms - Riverside County
 SE 1/4, NE 1/4, NE 1/4 of Section 7, T4S, R6E, SBB&M
 USGS Cathedral City 7.5 min. Topographic Map

ORDER NO. 83-58