

CALIFORNIA REGIONAL WATER QUALITY CONTROL BOARD
COLORADO RIVER BASIN REGION

ORDER NO. 83-6

WASTE DISCHARGE REQUIREMENTS
FOR
U.S. MARINE CORPS BASE - CAMP WILSON
Northwest of Twentynine Palms - San Bernardino County

The California Regional Water Quality Control Board, Colorado River Basin Region, finds that:

1. The U.S. Marine Corps Base (hereinafter also referred to as the discharger), Twentynine Palms, California 92278, submitted a Report of Waste Discharge, dated September 27, 1982 for the expansion of Camp Wilson.
2. The discharger is discharging an average of 77,000 gallons per-operating-day of domestic sewage into two oxidation basins, which overflow into another basin for final disposal by evaporation and infiltration. The basins are located in the NE $\frac{1}{4}$ of Section 33, T3N, R8E, SBB&M. This camp's sewage disposal system is designed for a maximum flow of 120,000 gallons-per-day. The population of said camp, when in operation, usually averages about 6,000. The camp is approximately nine (9) miles northwest of the main camp and is situated within the boundaries of the base.
3. The original discharge from this training camp has been subject to waste discharge requirements adopted in Board Order No. 77-13.
4. The Water Quality Control Plan for the West Colorado River Basin was adopted by the Board on April 10, 1975. The Basin Plan contains water quality objectives for the Dale Hydrologic Unit.
5. Department of Water Resources has provided data of nearby wells, which indicate that the ground water depth is about 100 feet.
6. The beneficial uses of the ground waters of the Dale Hydrologic Unit are:
 - a. Municipal supply
 - b. Industrial supply
 - c. Agricultural supply
7. The Board has notified the discharger and interested agencies and persons of its intent to update waste discharge requirements for the discharge.
8. The Board in a public meeting heard and considered all comments pertaining to the discharge.

*Superseded
1/27/88
by order #
88-15*

9. The issuance of waste discharge requirements for this discharge is exempt from the provisions of the California Environmental Quality Act (Public Resources Code, Section 21000 et. seq.) in accordance with Section 15101, Article 8, Division 6, Title 14, California Administrative Code.

IT IS HEREBY ORDERED, the discharger shall comply with the following:

A. Discharge Specifications

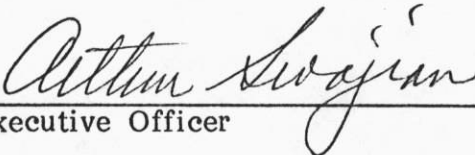
1. Neither the treatment nor the discharge of wastewater shall create a pollution or a nuisance as defined in Division 7 of the California Water Code.
2. No wastewater other than domestic sewage shall be discharged at this location.
3. A minimum freeboard depth of at least two feet shall be maintained in each basin.
4. Adequate measures shall be taken to assure that unauthorized persons and animal pets are effectively excluded from contact with the discharge.
5. Adequate protective works shall be provided to assure that a flood which would be expected to occur on a frequency of once in a 100 year period, would not erode or otherwise render portions of the treatment and discharge facilities inoperable.
6. Treated or untreated sludge, or similar solid waste materials, shall not be discharged to or enter any drainage channels.
7. There shall be no surface flow of wastewater away from the discharge facilities, and there shall be no direct discharge to any drainage channel.
8. Treatment and disposal by ponding shall be conducted in such manner that there shall be no stranded or exposed sewage solids.
9. Treatment and discharge of wastewater shall be conducted by technical procedures which will maintain an aerobic environment.
10. Infiltration facilities shall be maintained and operated so as to maximize infiltration and minimize the increase in salinity of the infiltrating wastewater.
11. Standby power and pumping facilities shall be provided in the event of pump and/or commercial power failure.

B. Provisions

1. Prior to any modifications in this facility which would result in material change in the quality or quantity of wastewater discharged, or any material change in location of discharge, the discharger shall report in writing to the Regional Board.

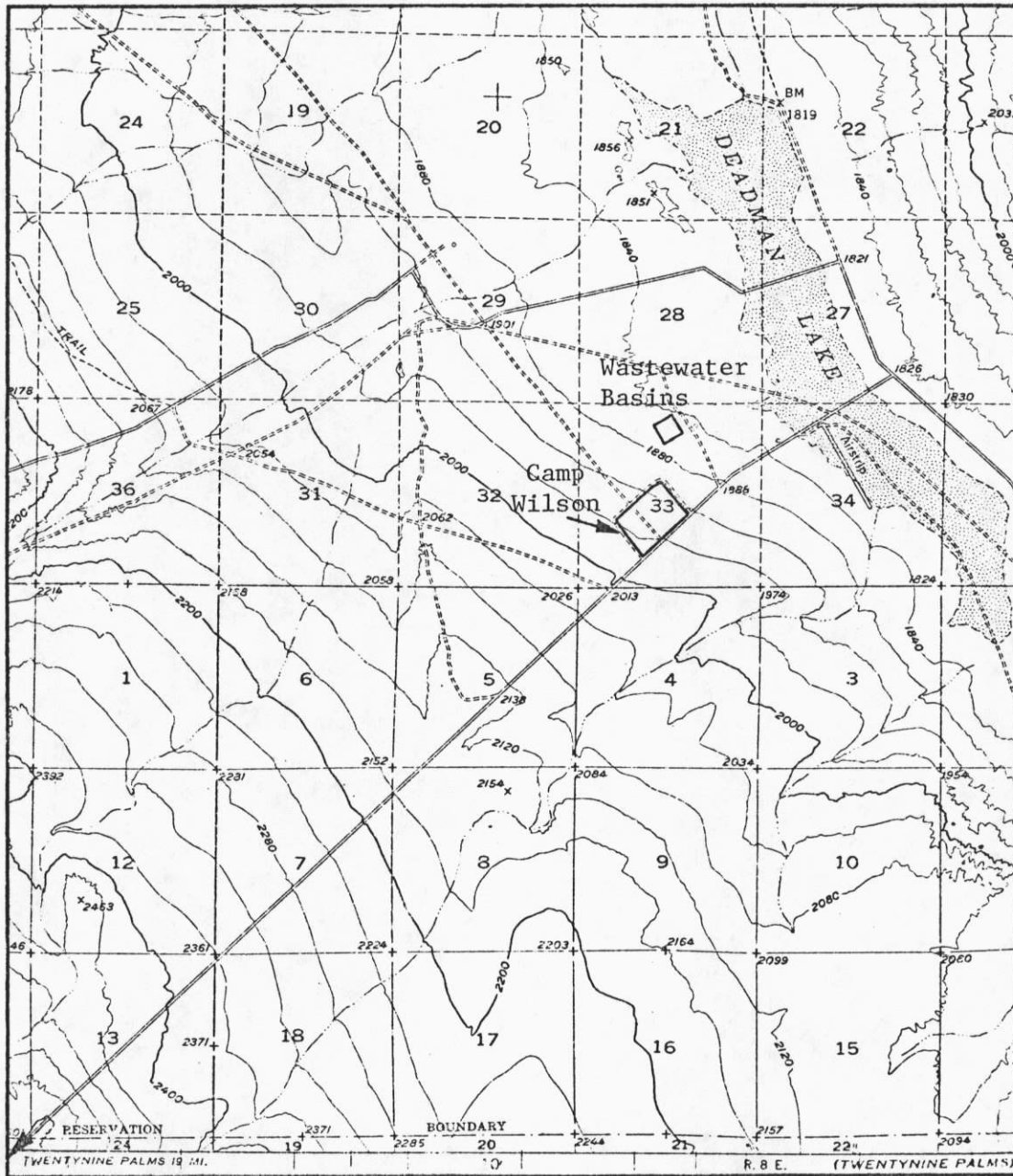
2. Upon request from this Board's Executive Officer the discharger shall furnish technical and/or monitoring reports on the treatment and discharge of waste.
3. This Order supersedes Board Order No. 77-13.

I, Arthur Swajian, Executive Officer, do hereby certify the foregoing is a full, true and correct copy of an Order adopted by the California Regional Water Quality Control Board, Colorado River Basin Region, on January 26, 1983.



Executive Officer

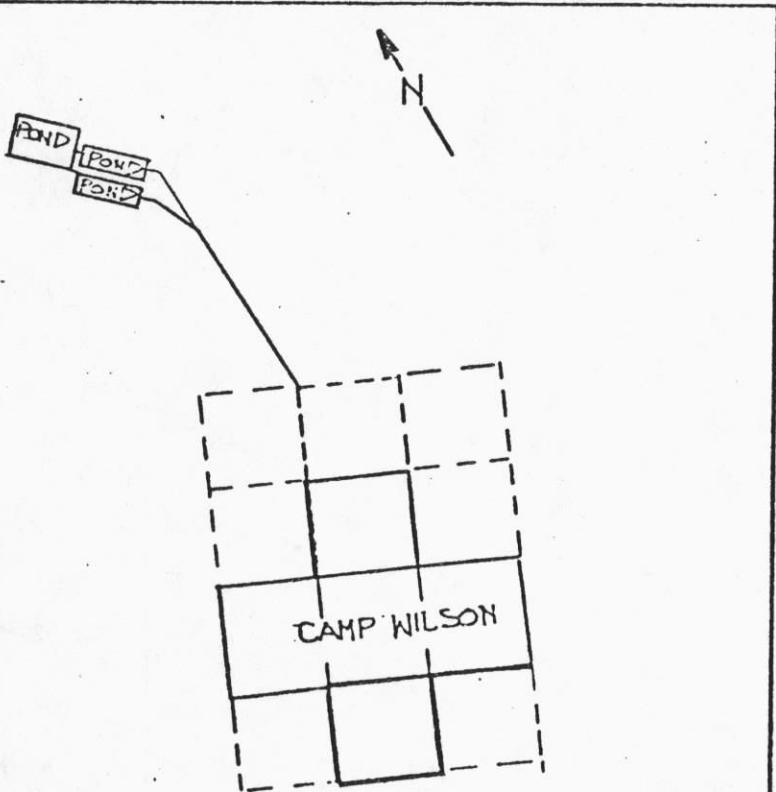
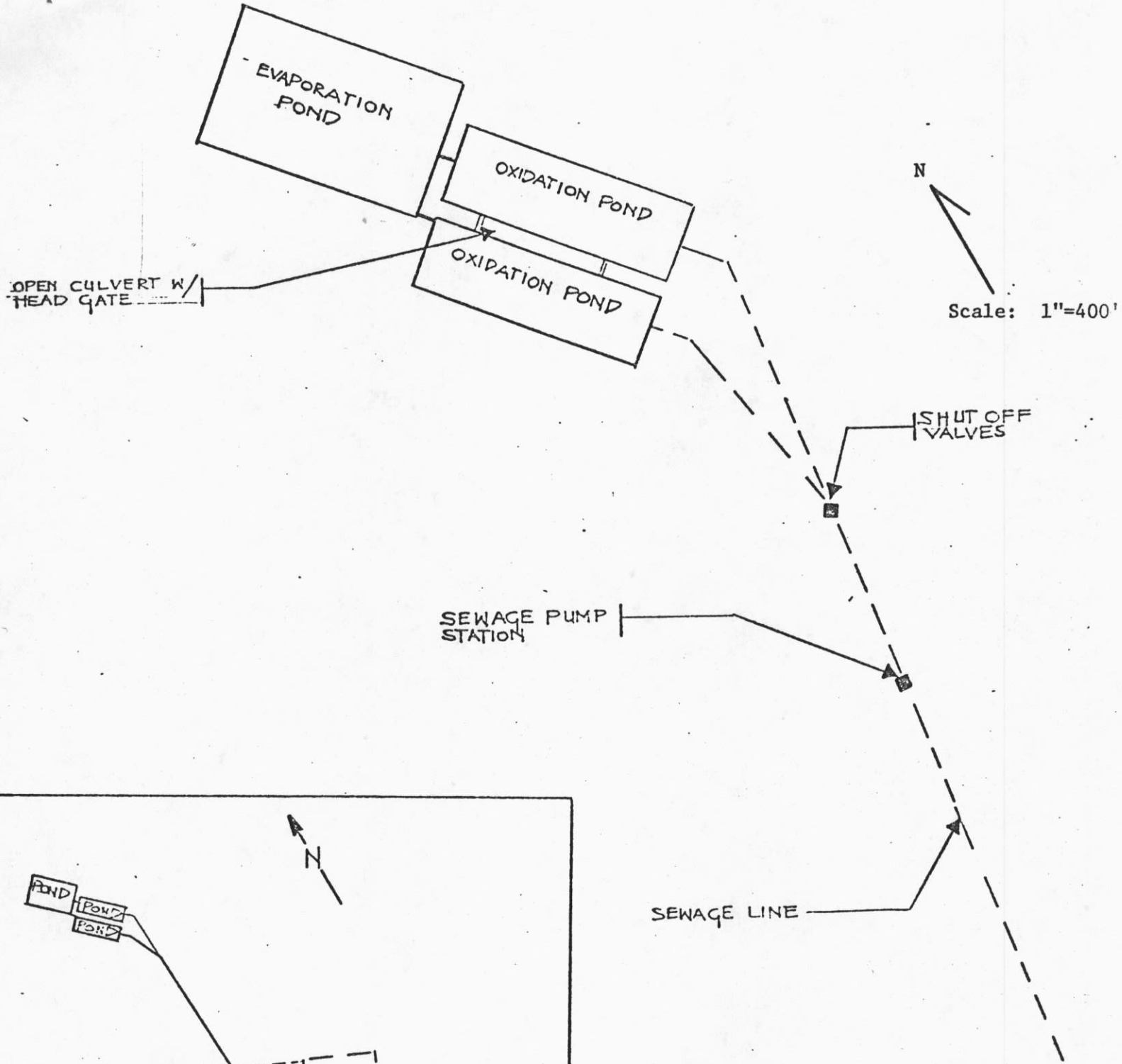
CALIFORNIA REGIONAL WATER QUALITY CONTROL BOARD - 7



SITE MAP NO. 1

U.S. MARINE CORPS BASE - CAMP WILSON
Northwest of Twentynine Palms - San Bernardino County
Discharge Location: NE 1/4 of Section 33, T3N, R8E, SBB&M
USGS Deadman Lake 15 min. Topographic Map

Order No. 83-6



SITE MAP NO. 2

U.S. MARINE CORPS BASE
CAMP WILSON WASTEWATER FACILITIES
Northwest of Twentynine Palms
San Bernardino County

Order No. 83-6