

**CALIFORNIA REGIONAL WATER QUALITY CONTROL BOARD
COLORADO RIVER BASIN REGION**

ORDER NO. 84-5

**WASTE DISCHARGE REQUIREMENTS
FOR
FOUNTAIN OF YOUTH SPA
Northeast of Salton Sea - Imperial County**

The California Regional Water Quality Control Board, Colorado River Basin Region finds that:

1. Fountain of Youth Spa, J. T. Trily, President (hereinafter also referred to as the discharger), P. O. Box 1244, Brawley, CA 92227, submitted current information September 21, 1983, to update waste discharge requirements.
2. Fountain of Youth Spa is currently discharging:
 - a. A maximum of 0.27 mgd of sewage and swimming pool wastewater from a mobile home park with a design capacity of 1500 units. There are presently 700 mobile home spaces, 300 camper spaces, and 7 swimming pools. The wastewater is discharged into a system consisting of three raw sewage oxidation basins located in the E 1/2, Section 13, T9S, R12E, SBB&M. Final discharge is by infiltration and evaporation.
 - b. 125 gpm of brackish artesian well water is diverted around the park and discharged to a natural drainage channel near the NE corner of Section 13, T9S, R12E, SBB&M. Drainage of the channel is towards the Salton Sea.
3. The discharge has been subject to waste discharge requirements contained in Board Order No. 75-44.
4. The Water Quality Control Plan for the West Colorado River Basin was adopted on April 10, 1975, and this Order implements the objectives stated in the Plan.
5. Shallow ground waters in the area are brackish and are not beneficially used.
6. The Board has notified the discharger and interested persons and agencies of its intent to update waste discharge requirements for the existing discharge.
7. The Board in a public meeting heard and considered all comments pertaining to the existing discharge.

*Supercoded
89-054
06/28/89*

8. The disposal site constitutes an ongoing project in accordance with the provisions of the California Environmental Quality Act (Public Resources Code Section 21000 et. seq.) and Title 14, California Administrative Code, Article 6.5, Section 15070, because the governmental approvals on or after April 5, 1973, do not involve a greater degree of responsibility or control over such activity than the governmental approvals received prior to that date.

IT IS HEREBY ORDERED, the discharger shall comply with the following:

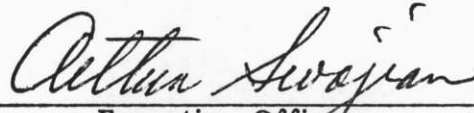
A. Discharge Specifications

1. The treatment or disposal of waste shall not cause pollution or a nuisance as defined in Sections 13050 (l) and 13050 (m) of the California Water Code.
2. Wastewater shall not be discharged outside the designated sewage lagoons shown on Attachment "A".
3. No wastewater other than domestic sewage shall be discharged at these locations.
4. A minimum depth of freeboard of at least two feet shall be maintained in earthen basins.
5. Treated or untreated sludge, or similar solid waste materials, shall be disposed in such a manner that these materials shall not enter any channel which will drain to the Salton Sea.
6. Adequate measures shall be taken to assure that unauthorized persons and animal pets are effectively excluded from contact with the discharge.
7. Adequate measures shall be taken to assure that flood or surface drainage waters do not erode or otherwise render portions of the discharge facilities inoperable.
8. There shall be no surface flow of wastewater away from the discharge facilities.
9. There shall be no discharge, bypass, or flow of treated or untreated sewage to the Salton Sea or to any channel which drains to said Sea.
10. Disposal by ponding shall be conducted in such a manner that there shall be no stranded or exposed sewage solids.
11. Facilities shall be available to handle wastewater in the event of commercial power failure.
12. Treatment and discharge of wastewater shall be conducted by technical procedures which will maintain an aerobic environment.

Provisions

1. Prior to any modifications in this facility which could result in material change in the quality or quantity of wastewater discharged, or any material change in location of discharge, the discharger shall report thereon to the Board.
2. Upon request from this Board's Executive Officer, the discharger shall furnish technical and/or monitoring reports on the treatment and discharge of wastes.
3. In the event of any change in operation, or in control or ownership of land and/or waste disposal facilities owned or controlled by the discharger, the discharger shall:
 - a. Notify this Board of such change; and
 - b. Notify the succeeding owner or operator by letter of the existence of this Order, a copy of which shall be filed with this Board.
4. This Order supersedes Board Order No. 75-44.

I, Arthur Swajian, Executive Officer, do hereby certify the foregoing is a full, true and correct copy of an Order adopted by the California Regional Water Quality Control Board, Colorado River Basin Region, on March 21, 1984.


Executive Officer

**CALIFORNIA REGIONAL WATER QUALITY CONTROL BOARD
COLORADO RIVER BASIN REGION**

**MONITORING AND REPORTING PROGRAM NO. 84-5
FOR
FOUNTAIN OF YOUTH SPA
Northeast of Salton Sea - Imperial County**

Location of Discharge: E $\frac{1}{2}$, Section 13, T9S, R12E, SBB&M

MONITORING

The discharger shall submit an annual status report on the following:

1. Estimate of maximum daily flow (gpd) of sewage discharged to basin(s).
2. Number of mobile home and camper spaces and restrooms presently connected to the sewerage system.
3. List any proposed changes in the sewage disposal facilities during the upcoming year.

REPORTING

1. Monitoring reports shall be submitted to the Regional Board annually by January 15th of each year.

Submit monitoring reports to:

California Regional Water Quality Control Board
Colorado River Basin Region
73-271 Highway 111, Suite 21
Palm Desert, CA 92260

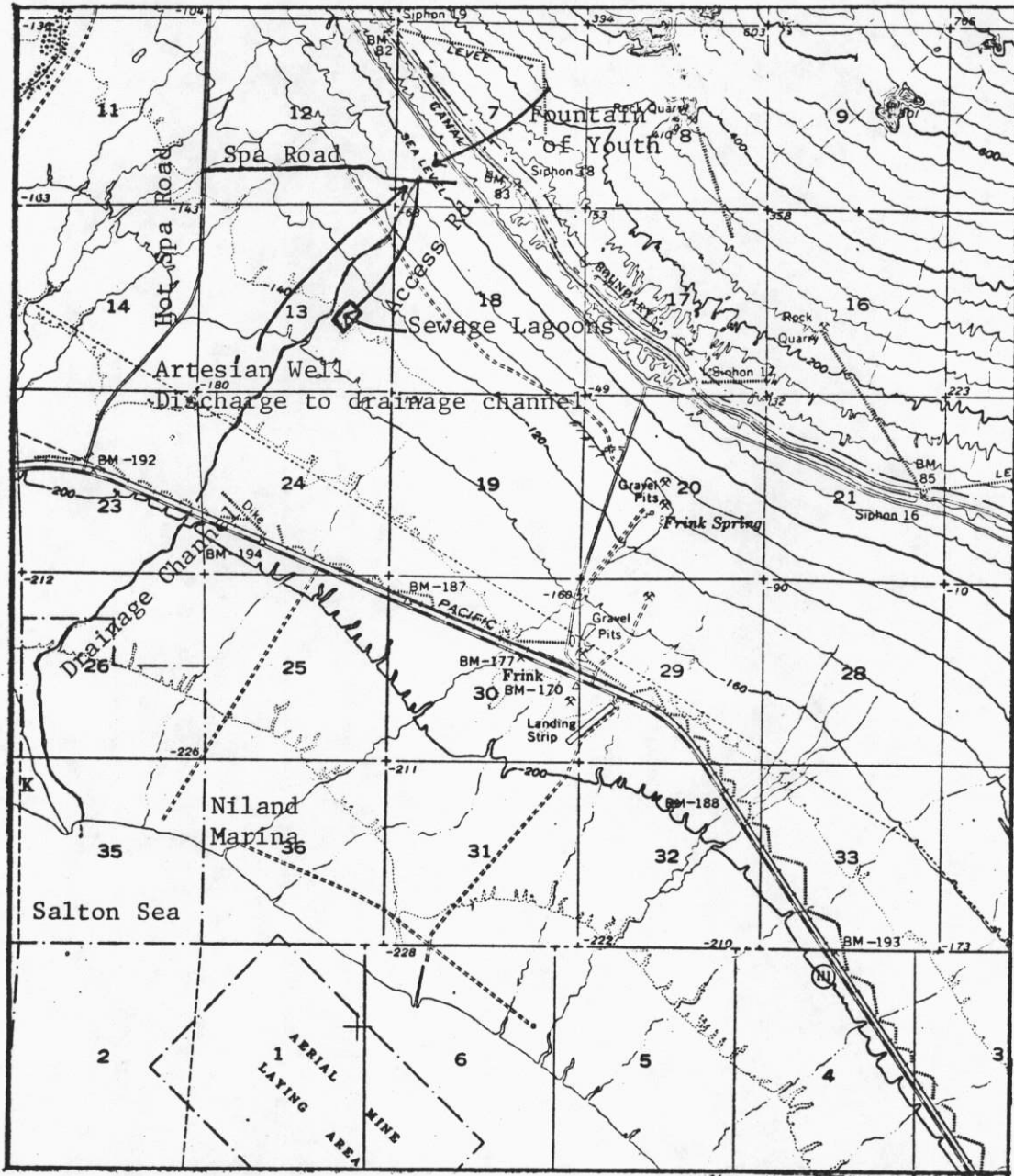
2. Immediately report to this office by telephone and follow-up by letter any failures of the sewerage system.

ORDERED BY:

Arthur Sevajian
Executive Officer

Jan. 26, 1988
Date

CALIFORNIA REGIONAL WATER QUALITY CONTROL BOARD - 7



Attachment A

Fountain of Youth Spa
Northeast of Salton Sea - Imperial County
E 1/2, Section 13, T9S, R12E, SBB&M
USGS 15 min Frink Area Topographic Map