

CALIFORNIA REGIONAL WATER QUALITY CONTROL BOARD
COLORADO RIVER BASIN REGION

ORDER NO. 84-66

WASTE DISCHARGE REQUIREMENTS
FOR
KAISER CEMENT CORPORATION
SOLID WASTE DISPOSAL SITE
Lucerne Valley - San Bernardino County

The California Regional Water Quality Control Board, Colorado River Basin Region, finds that:

1. Kaiser Cement Corporation Cushenbury Plant (hereinafter also referred to as the discharger), Star Route Box 400, Lucerne Valley, CA 92356, submitted current information dated February 10, 1984 to update waste discharge requirements for the existing site.
2. The discharger is discharging Group 2 and Group 3 waste in the NE $\frac{1}{4}$, SE $\frac{1}{4}$, Section 10, T3N, R1E, SBB&M. The discharger operates the site as a landfill.
3. The site receives approximately 600 cubic yards per year of Group 2 and Group 3 wastes including: waste paper, wood pallets, cleaning rags, tree trimmings, product waste, and small amounts of incidental miscellaneous materials including waste from employees' lunches.
4. The total capacity of the site is 20,000 cubic yards with 16,500 cubic yards remaining. It has an estimated remaining life of 40 plus years. Total site area is one and one-half acres.
5. The disposal site is located near Cushenbury Springs at the mouth of Cushenbury Canyon. Dikes have been constructed to divert flood waters around the plant in which the site is located. The discharger submitted an engineering report dated June 18, 1976, containing calculations regarding adequacy of these dikes to provide flood protection from a 100 year storm.
6. The disposal site is located near a well which provides water for industrial and domestic use at the plant. The discharger reports that the depth to ground water is approximately 60 feet. A sample taken from the well in 1977 reports a TDS content of 387 mg/l.
7. The beneficial uses of ground waters in the Lucerne Hydrologic Unit are:
 - a. Municipal supply
 - b. Agricultural supply
 - c. Industrial supply
 - d. Domestic supply
 - e. Water supply and habitat for wildlife

Mitsubishi
Change of name & Ownership
5/12/88
88-77

SUPERSEDED By
90-078
11/28/90

8. Land within 1,000 feet of this site is used for cement manufacturing facilities.
9. The County of San Bernardino has prepared a Solid Waste Management Master Plan.
10. The Water Quality Control Plan for the West Colorado River Basin was adopted April 10, 1975. The Basin Plan contains water quality objectives for the Lucerne Hydrologic Unit, and this Order implements those objectives.
11. This disposal site meets the criteria contained in the California Administrative Code, Chapter 3, Subchapter 15, for classification as a Class II-2 disposal site, but is suitable to receive only those wastes described in Finding No. 3 (above).
12. This discharge has been subject to waste discharge requirements adopted in Board Order No. 76-18.
13. The Board has notified the discharger and interested persons and agencies of its intent to update waste discharge requirements for this site.
14. The Board in a public meeting heard and considered all comments pertaining to the existing discharge.
15. The disposal site constitutes an ongoing project in accordance with the provisions of the California Environmental Quality Act (Public Resources Code Section 21000 et.seq.), and Title 14, California Administrative Code, Article 6.5, Section 15070, because the governmental approvals on or after April 15, 1973, do not involve a greater degree of responsibility or control over such activity than the governmental approvals received prior to that date.

IT IS HEREBY ORDERED, the discharger shall comply with the following:

A. Discharge Specifications

1. The treatment or disposal of wastes shall not cause pollution or a nuisance as defined in Sections 13050 (l) and 13050 (m) of the California Water Code.
2. Waste materials shall not be discharged outside the designated disposal area shown on Attachment "A".
3. Surface drainage from tributary areas and internal site drainage from surface or subsurface sources shall not contact or percolate through Group 2 wastes discharged at this site.
4. Group 2 wastes shall not be discharged on any surface which is less than 10 feet above the highest anticipated ground water level.

5. No Group 2 wastes shall be placed in ponded water from any source whatsoever.
6. There shall be no discharge of Group 2 wastes other than those described in Finding No. 3 (above) unless approved by the Executive Officer.
7. There shall be no discharge of liquid wastes unless approved by the Executive Officer.
8. The disposal area shall be protected from any washout or erosion of wastes or covering material and from any inundation which could occur as a result of floods having a predicted frequency of once in 100 years.
9. The exterior surfaces of the disposal area shall be graded to promote lateral runoff of precipitation and to prevent ponding.
10. The discharger shall remove and relocate any wastes which are discharged at this site in violation of these requirements.

B. Prohibitions

1. The discharge of wastes to any surface drainage course is prohibited.
2. Group 1 wastes shall not be discharged at this site.

C. Provisions

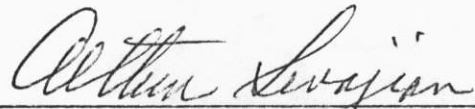
1. The discharger shall file an updated operation plan with this Board when substantial changes in operations have been made. For the purpose of these requirements, this includes any proposed change in the boundaries or contours of the site. A letter indicating conformance with existing plans and requirements shall be submitted annually. Said plan and letter shall be pursuant to the California Administrative Code, Title 23, Subchapter 25, Section 2552.
2. Prior to three years from closure of the total site, the discharger shall file a Site Closure and Maintenance Report with this Board pursuant to California Administrative Code, Title 23, Subchapter 5, Section 2553.
3. Site Closure and Maintenance Reports shall conform to minimum closure requirements set forth in the California Administrative Code, Title 23, Subchapter 15, Section 2553.2.
4. The discharger shall comply with "Monitoring and Reporting Program No. 84-66", and future revisions thereto, as specified by the Executive Officer.
5. The discharger shall maintain monuments identifying the limits of the disposal site and of each solid waste disposal area within the site.
6. The discharger shall maintain a copy of this Order available at all times to site operating personnel.

7. This Board considers the property owner to have a continuing responsibility for correcting any problems which may arise in the future as a result of waste discharge or water applied to this property during subsequent use of the land for other purposes. In the event of any change in ownership of the disposal site, or change of operations, the discharger shall:

- a. Notify this Board of such a change; and
- b. Notify the succeeding owner or operator of the existence of this Order by letter; a copy of which shall be filed with this Board.

8. This Order supersedes this Board Order No. 76-18.

I, Arthur Swajian, Executive Officer, do hereby certify the foregoing is a full, true and correct copy of an Order adopted by the California Regional Water Quality Control Board, Colorado River Basin Region, on May 16, 1984.



Executive Officer

CALIFORNIA REGIONAL WATER QUALITY CONTROL BOARD
COLORADO RIVER BASIN REGION

MONITORING AND REPORTING PROGRAM NO. 84-66

FOR

KAISER CEMENT CORPORATION
SOLID WASTE DISPOSAL SITE
Lucerne Valley - San Bernardino County

Location of Discharge: NE $\frac{1}{4}$, SE $\frac{1}{4}$, Section 10, T3N, R1E, SBB&M

MONITORING

The discharger shall report to the Regional Board concerning the following:

<u>Item</u>	<u>Unit</u>	<u>Reporting Frequency</u>
1. Refuse discharged at solid waste disposal site	Cu. Yd./Quarter	Quarterly
2. Any discharge of wastes other than those allowed in the specifications	Types, volume and exact location	Immediately upon becoming aware that the waste has been discharged

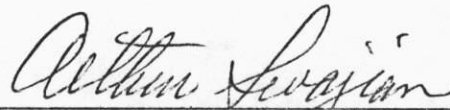
REPORTING

Quarterly monitoring reports shall be submitted to the Regional Board by January 15, April 15, July 15, and October 15 of each year.

Submit monitoring reports to:

California Regional Water Quality Control Board
Colorado River Basin Region
73-271 Highway 111, Suite 21
Palm Desert, CA 92260

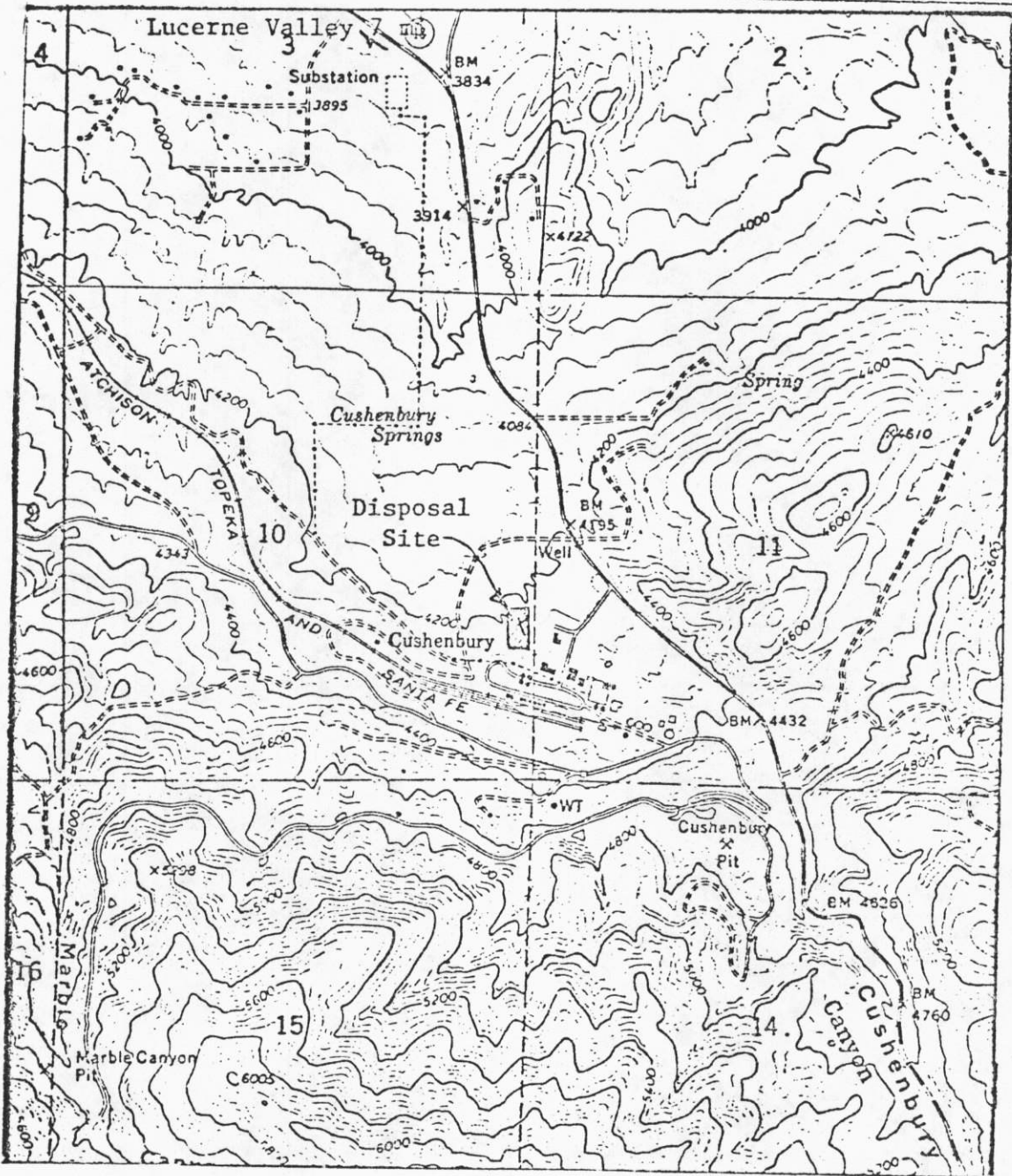
ORDERED BY:


Executive Officer

May 16, 1984

Date

CALIFORNIA REGIONAL WATER QUALITY CONTROL BOARD



Scale:
1"=2,000'

KAISER CEMENT CORPORATION
SOLID WASTE DISPOSAL SITE
NE 1/4 SE 1/4, Section 10, T3N, R1E, SBB&M
Lucerne Valley - San Bernardino County
U.S.G.S. 7 1/2 min. Topographic Map - Big Bear City Quadrangle