

CALIFORNIA REGIONAL WATER QUALITY CONTROL BOARD
COLORADO RIVER BASIN REGION

ORDER NO. 84-81

WASTE DISCHARGE REQUIREMENTS
FOR
BLACK MEADOW LANDING RESORT
Northwest of Parker Dam - San Bernardino County

The California Regional Water Quality Control Board, Colorado River Basin Region, finds that:

1. Black Meadow Landing Resort, George Field, owner (hereinafter also referred to as the discharger), P. O. Box 98, Parker Dam, California 92267, verified on April 19, 1984, that the information contained in Findings No. 3, 4 and 5 (below) are accurate.
2. The discharge from this motel and recreational vehicle park has been subject to waste discharge requirements adopted in Board Order No. 77-56.
3. The discharger is discharging a maximum of 50,000 gallons-per-day of domestic sewage from a motel and recreational vehicle park consisting of 51 motel units, 210 RV spaces, 85 campsites, a laundry room and a restaurant. Wastewater is discharged into septic tanks and then pumped into oxidation basins (for disposal by infiltration and evaporation), which are located in the SW $\frac{1}{4}$ of the NE $\frac{1}{4}$ of Section 13, T3N, R26E, SBB&M.
4. There are no domestic wells within 500 feet of the sewage disposal facilities described in Finding No. 3 (above).
5. The discharger states that the wastewater disposal facilities are more than 200 feet from the high water line of the Colorado River.
6. The Water Quality Control Plan for the Colorado River Basin Region of California was adopted by the Regional Board on May 16, 1984. The Basin Plan contains water quality objectives for the Colorado Hydrologic Unit.
7. The beneficial uses of the ground water of the Colorado Hydrologic Unit are:
 - a. Municipal supply
 - b. Industrial supply
 - c. Agricultural supply
8. The Board has notified the discharger and interested agencies and persons of its intent to update waste discharge requirements for the discharge.
9. The Board in a public meeting heard and considered all comments pertaining to the discharge.

*replaced
by 90-003*

10. This sewage disposal facility constitutes an ongoing project in accordance with provisions of the California Environmental Quality Act (Public Resources Code Section 21000 et. seq.) and the State guidelines because the governmental approvals on or after April 5, 1973, do not involve a greater degree of responsibility or control over such activity than the governmental approvals received prior to that date.

IT IS HEREBY ORDERED, the discharger shall comply with the following:

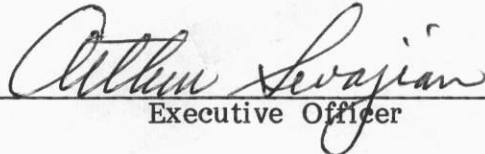
A. Discharge Specifications

1. Neither the treatment nor the discharge of wastewater shall create a pollution or a nuisance as defined in Division 7 of the California Water Code.
2. No wastewater other than domestic sewage shall be discharged at this location.
3. A minimum freeboard depth of at least two (2) feet shall be maintained in each basin.
4. Adequate measures shall be taken to assure that unauthorized persons and animal pets are effectively excluded from contact with the discharge.
5. Adequate protective works shall be provided to assure that a flood which would be expected to occur on a frequency of once in a 100 year period, would not erode or otherwise render portions of the treatment and discharge facilities inoperable.
6. Treated or untreated sludge, or similar solid waste materials, shall not be discharged to or enter any drainage channels or Colorado River.
7. There shall be no surface flow of wastewater away from the discharge facilities, and there shall be no direct discharge to any drainage channel or to Colorado River.
8. Treatment and disposal by ponding shall be conducted in such manner that there shall be no stranded or exposed sewage solids.
9. Treatment and discharge of wastewater shall be conducted by technical procedures which will maintain a surface aerobic environment.
10. Infiltration facilities shall be maintained and operated so as to maximize infiltration and minimize the increase in salinity of the infiltrating wastewater.
11. Standby power and pumping facilities shall be provided in the event of pump and/or commercial power failure.
12. The sewage disposal facilities shall not be located within 200 feet of the regulated high water line of the Colorado River.

B. Provisions

1. Prior to any modifications in this facility which could result in material change in the quality or quantity of wastewater discharged, or any material change in location of discharge, the discharger shall report in writing to the Regional Board.
2. Upon request from this Board's Executive Officer, the discharger shall furnish technical and/or monitoring reports on the treatment and discharge of waste.
3. In the event of any change in control or ownership of land or waste disposal facilities owned or controlled by the discharger, the discharger shall:
 - a. Notify the Board of such change; and
 - b. Transmit a copy of this Order to the succeeding owner or operator, and file a copy of the transmittal letter with this Board.
4. This Order supersedes Board Order No. 77-56.

I, Arthur Swajian, Executive Officer, do hereby certify the foregoing is a full, true and correct copy of an Order adopted by the California Regional Water Quality Control Board, Colorado River Basin Region, on September 19, 1984.


Executive Officer

**CALIFORNIA REGIONAL WATER QUALITY CONTROL BOARD
COLORADO RIVER BASIN REGION**

MONITORING AND REPORTING PROGRAM NO. 84-81
FOR
BLACK MEADOW LANDING
Northwest of Parker Dam - San Bernardino County

Location of Discharge: SW $\frac{1}{4}$ of NE $\frac{1}{4}$ of Section 13, T3N, R26E, SBB&M

MONITORING

The discharger shall submit an annual status report on the following:

1. Estimate of maximum daily flow (gpd) of sewage discharged to basin(s).
2. Number of motel units, RV spaces, campsites, restaurant and restrooms presently connected to the sewerage system.
3. List any proposed changes in the sewage disposal facilities during the upcoming year.

REPORTING

1. Monitoring reports shall be submitted to the Regional Board annually by January 15th of each year.

Submit monitoring reports to:

California Regional Water Quality Control Board
Colorado River Basin Region
73-271 Highway 111, Suite 21
Palm Desert, CA 92260

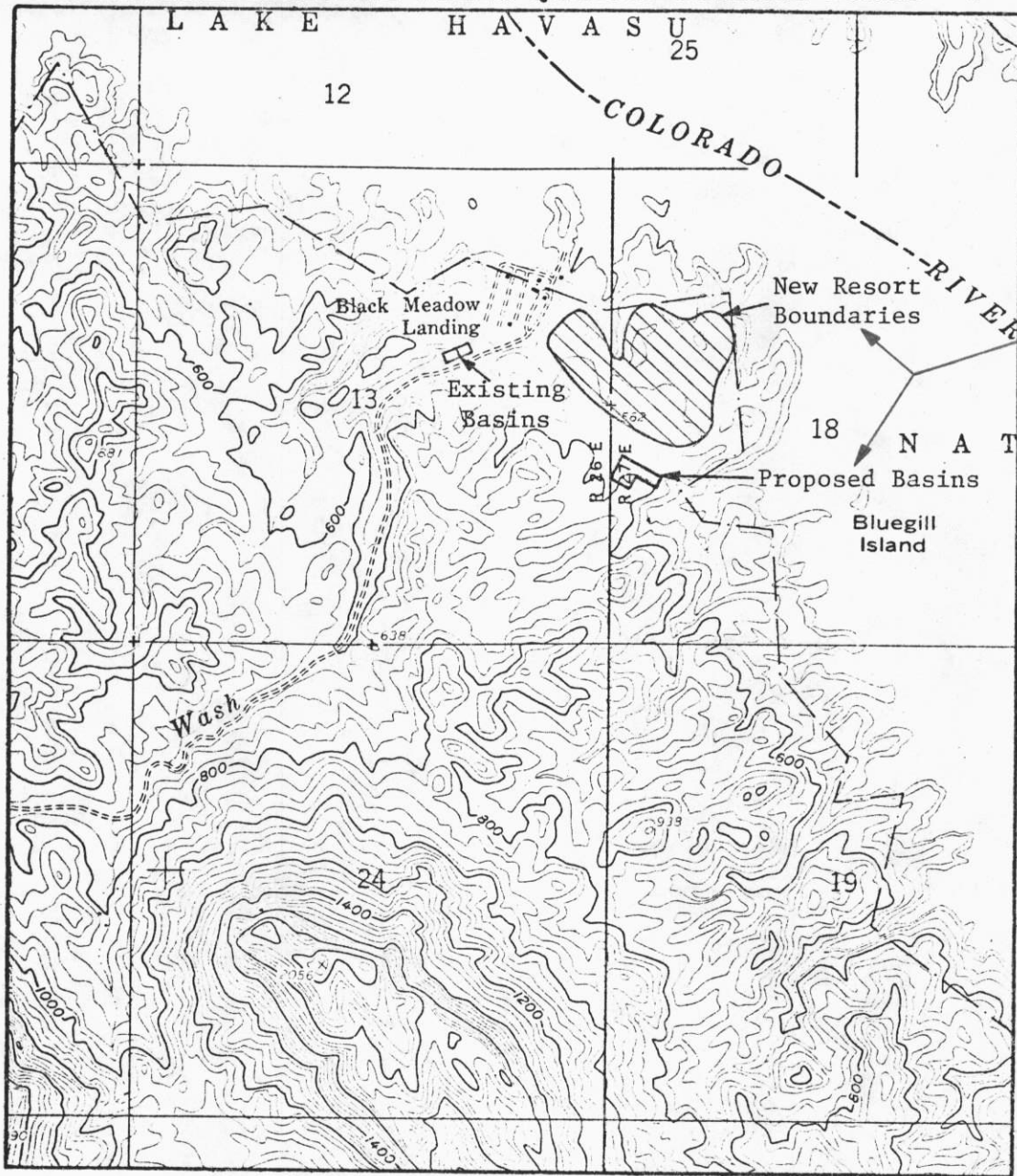
2. Immediately report to this office by telephone and follow-up by letter any failures of the sewerage system.

ORDERED BY:

Arthur Swazian
Executive Officer

Jan. 26, 1988
Date

CALIFORNIA REGIONAL WATER QUALITY CONTROL BOARD - 7



(NOTE:)
Not A Part Of
This Order



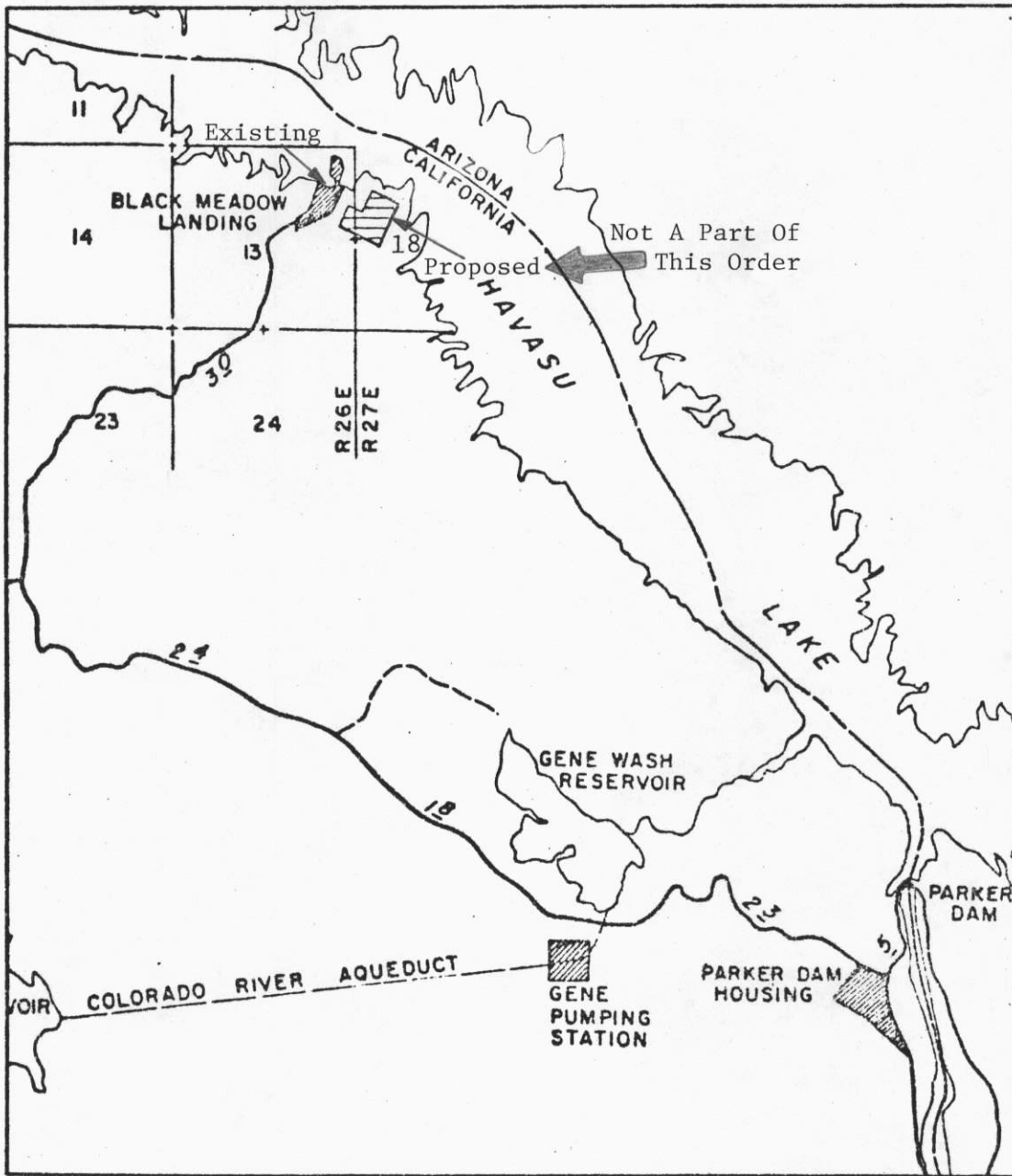
Scale:
1" = 2,000'

SITE MAP NO. 1

BLACK MEADOW LANDING RESORT
Northwest of Parker Dam - San Bernardino County
SW $\frac{1}{4}$ of the NE $\frac{1}{4}$ of Section 13, T3N, R26E, SBB&M
USGS Gene Wash 7.5 min. Topographic Map

Order No. 84-81

CALIFORNIA REGIONAL WATER QUALITY CONTROL BOARD - 7



SITE MAP NO. 2

BLACK MEADOW LANDING RESORT
Northwest of Parker Dam - San Bernardino County
SW $\frac{1}{4}$ of the NE $\frac{1}{4}$ of Section 13, T3N, R26E, SBB&M

Order No. 84-81