

**CALIFORNIA REGIONAL WATER QUALITY CONTROL BOARD
COLORADO RIVER BASIN REGION**

ORDER NO. 84-89

**WASTE DISCHARGE REQUIREMENTS
FOR
PFIZER, INC.
SOLID WASTE DISPOSAL SITE
Lucerne Valley - San Bernardino County**

The California Regional Water Quality Control Board, Colorado River Basin Region, finds that:

1. Pfizer, Inc., Minerals, Pigments and Metals Division (hereinafter also referred to as the discharger), P. O. Box 558, Lucerne Valley, California, 92356, submitted current information dated May 4, 1984, to update waste discharge requirements for the existing site.
2. The solid waste disposal site is located in the NW $\frac{1}{4}$, NE $\frac{1}{4}$, Section 7, T3N, R1E, SBB&M. The site is a fill and compact operation. Wastes are discharged, sprayed with water, and compacted to a density of approximately 80 lbs per cubic foot.
3. The site receives Group C mining waste as classified in accordance with criteria contained in the California Administrative Code, Title 23, Chapter 3, Subchapter 15, and other nonhazardous solid wastes as follows:
 - a. limestone dust - approximately 28,000 tons/yr.
 - b. paper, cardboard, and scrap lumber - approximately 40 tons/yr.
4. The total capacity of the site is 633,000 cubic yards with 287,000 cubic yards remaining. It has an estimated remaining life of eleven years. Total site area is 11.7 acres.
5. The discharger reports that the nearest well to the site is about 2,500 feet away. Data from this well indicates that the water table is in excess of 100 feet below the ground surface and that salinity is negligible.
6. Available geologic map coverage indicates that the site is underlain primarily by recent and upper Pleistocene sediments of moderate to high permeability. Dikes have been built and a channel dug to divert storm waters around the site. The discharger reports these structures are sufficient to provide protection from a 100 year flood.
7. The beneficial uses of ground waters in the Lucerne Hydrologic Unit are:
 - a. Municipal supply
 - b. Agricultural supply
 - c. Industrial supply
 - d. Domestic supply

*Replaced by
86-5
5/21/86*

8. Land within 1,000 feet of this site is zoned for general manufacturing. It is presently being used only by the discharger.
9. In addition to solid waste, the discharger disposes sewage from 125 employees by means of septic tanks and leach lines located in the SE $\frac{1}{4}$, Section 6, T3N, R1E, SBB&M. This discharge is regulated by waste discharge requirements prescribed in Board Order No. 84-90.
10. The Water Quality Control Plan for the Colorado River Basin Region of California was adopted by the Regional Board on May 16, 1984. The Basin Plan contains water quality objectives for the Lucerne Hydrologic Unit, and this Order implements those objectives.
11. This discharge has been subject to waste discharge requirements adopted in Board Order No. 75-8.
12. The Board has notified the discharger and interested persons and agencies of its intent to update waste discharge requirements for this site.
13. The Board in a public meeting heard and considered all comments pertaining to the existing discharge.
14. The disposal site constitutes an ongoing project in accordance with the provisions of the California Environmental Quality Act (Public Resources Code Section 21000 et. seq.) and State guidelines because the governmental approvals on or after April 15, 1973 do not involve a greater degree of responsibility or control over such activity than the governmental approvals received prior to that date.

IT IS HEREBY ORDERED, the discharger shall comply with the following:

A. Discharge Specifications

1. The treatment or disposal of wastes shall not cause pollution or a nuisance as defined in Sections 13050 (l) and 13050 (m) of the California Water Code.
2. Waste materials shall not be discharged outside the designated disposal area.
3. Surface drainage from tributary areas and internal site drainage from surface or subsurface sources shall not contact or percolate through wastes discharged at this site.
4. Wastes shall not be discharged on any surface which is less than six feet above the highest anticipated ground water level.
5. Wastes shall not be placed in ponded water from any source whatsoever.

6. There shall no be discharge of wastes other than those listed in Finding No. 3.
7. The disposal area shall be protected from any washout or erosion of wastes or covering material and from any inundation which could occur as a result of floods having a predicted frequency of once in 100 years.
8. The exterior surfaces of the disposal area shall be graded to promote lateral runoff of precipitation and to prevent ponding.
9. The discharger shall remove and relocate any wastes which are discharged at this site in violation of these requirements.

B. Prohibitions

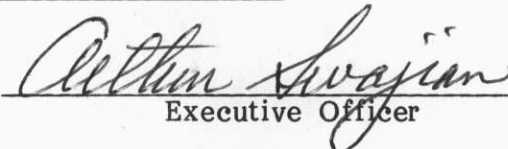
1. The discharge of wastes to any surface drainage course is prohibited.

C. Provisions

1. The discharger shall file an updated operation plan with this Board when substantial changes in operations have been made. For the purpose of these requirements, this includes any proposed change in the boundaries or contours of the site. A letter indicating conformance with existing plans and requirements shall be submitted annually.
2. Prior to three years from closure of the total site, the discharger shall file a Site Closure and Maintenance Report with this Board pursuant to California Administrative Code, Title 23, Subchapter 15, Section 2574.
3. The discharger shall comply with "Monitoring and Reporting Program No. 84-89", and future revisions thereto, as specified by the Executive Officer.
4. The discharger shall maintain monuments identifying the limits of the disposal site and of each solid waste disposal area within the site.
5. The discharger shall maintain a copy of this Order available at all times to site operating personnel.

6. This Board considers the property owner to have a continuing responsibility for correcting any problems which may arise in the future as a result of waste discharge or water applied to this property during subsequent use of the land for other purposes. In the event of any change in ownership of the disposal site, or change of operations, the discharger shall:
 - a. Notify this Board of such a change; and
 - b. Notify the succeeding owner or operator of the existence of this Order by letter; a copy of which shall be filed with this Board.
7. This Order supersedes this Board Order No. 75-8.

I, Arthur Swajian, Executive Officer, do hereby certify the foregoing is a full, true and correct copy of an Order adopted by the California Regional Water Quality Control Board, Colorado River Basin Region, on September 19, 1984.



Executive Officer

CALIFORNIA REGIONAL WATER QUALITY CONTROL BOARD
COLORADO RIVER BASIN REGION

MONITORING AND REPORTING PROGRAM NO. 84-89
FOR
PFIZER, INC.
SOLID WASTE DISPOSAL SITE
Lucerne Valley - San Bernardino County

Location of Discharge: NW $\frac{1}{4}$, NE $\frac{1}{4}$, Section 7, T3N, R1E, SBB&M.

MONITORING

The discharger shall report to the Regional Board concerning the following:

<u>Item</u>	<u>Unit</u>	<u>Reporting Frequency</u>
1. Refuse discharged at solid waste disposal site	Cu. Yd/Quarter	Quarterly
2. Any discharge of wastes other than those allowed in the specifications	Type, volume and exact location	Immediately upon becoming aware that the waste has been discharged

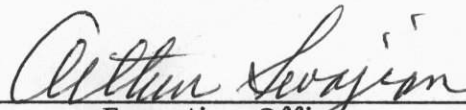
REPORTING

Quarterly monitoring reports shall be submitted to the Regional Board by January 15, April 15, July 15, and October 15 of each year.

Submit monitoring reports to:

California Regional Water Quality Control Board
Colorado River Basin Region
73-271 Highway 111, Suite 21
Palm Desert, CA 92260

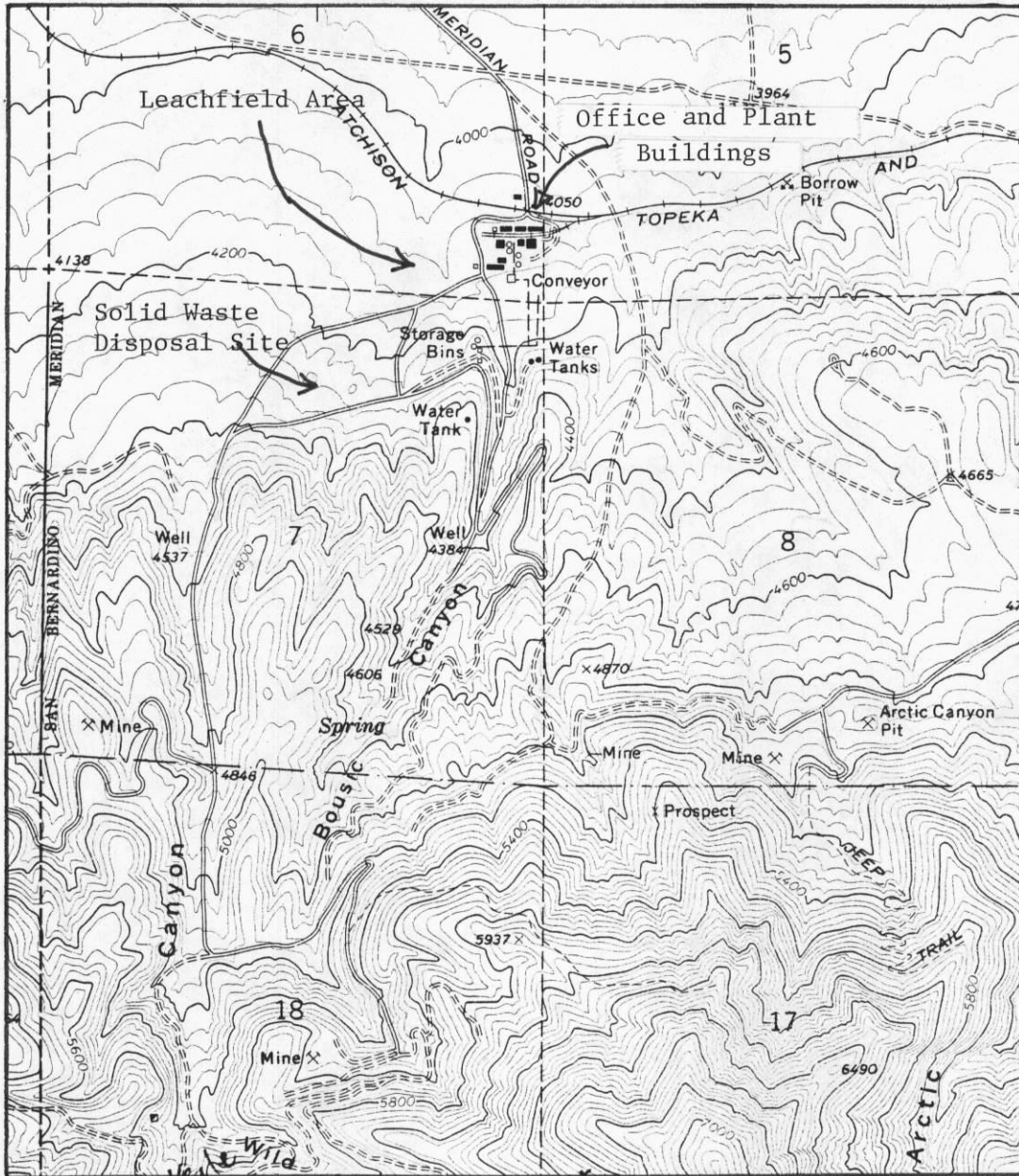
ORDERED BY:


Executive Officer

September 19, 1984

Date

CALIFORNIA REGIONAL WATER QUALITY CONTROL BOARD-7



SITE MAP
 PFIZER, INC.
 SOLID WASTE DISPOSAL SITE
 Lucerne Valley - San Bernardino County
 NW $\frac{1}{4}$, NE $\frac{1}{4}$, Section 7, T3N, R1E, SBB&M
 USGS 7 $\frac{1}{2}$ min Topographic Map - Fawnskin Quadrangle

Order No. 84-89