

**CALIFORNIA REGIONAL WATER QUALITY CONTROL BOARD
COLORADO RIVER BASIN REGION**

ORDER NO. 84-95

**WASTE DISCHARGE REQUIREMENTS
FOR
RIVER REFLECTIONS
Northeast of Earp - San Bernardino County**

The California Regional Water Quality Control Board, Colorado River Basin Region, finds that:

1. Richard Locken (hereinafter also referred to as the discharger), P. O. Box 75, Earp, California, 92242, verified on May 29, 1984, that the information in Findings No. 2 and 3, below is accurate.
2. The discharger is discharging a maximum of 10,000 gallons-per-day of domestic sewage from a mobile home park currently designed for 47 spaces. Wastewater is discharged into septic tanks and then pumped into existing oxidation basins (for disposal by infiltration and evaporation), which are located in the SW $\frac{1}{4}$ of the NE $\frac{1}{4}$ of Section 10, T1N, R26E, SBB&M. The basins have a design flow of 37,750 gallons-per-day.
3. There are no domestic wells within 500 feet of the sewage disposal facilities described in Finding No. 2 (above).
4. The discharge site (see attached site map which is a part of this Order) is leased by Richard Locken from the United States Department of the Interior, Bureau of Indian Affairs, Colorado River Agency, Route 1, Box 9-1C, Parker Arizona 85344, trustee for the Colorado River Indian Tribes.
5. The Water Quality Control Plan for the Colorado River Basin Region of California was adopted by the Regional Board on May 16, 1984. The Basin Plan contains water quality objectives for the Colorado Hydrologic Unit.
6. The beneficial uses of the ground water of the Colorado Hydrologic Unit are:
 - a. Municipal supply
 - b. Industrial supply
 - c. Agricultural supply
7. The Board has notified the discharger and interested agencies and persons of its intent to prescribe waste discharge requirements for the discharge.
8. The Board in a public meeting heard and considered all comments pertaining to the discharge.

*Superseded
09-19-90
by 90064*

9. These waste discharge requirements govern an existing facility, which the discharger is currently operating, and therefore is exempt from the provisions of the California Environmental Quality Act in accordance with Section 15301 of Title 14, Chapter 3 of the California Administrative Code.

IT IS HEREBY ORDERED, the discharger shall comply with the following:

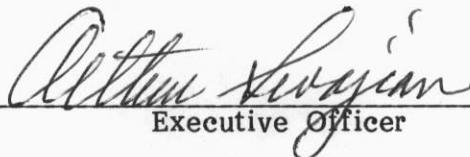
A. Discharge Specifications

1. Neither the treatment nor the discharge of wastewater shall create a pollution or a nuisance as defined in Division 7 of the California Water Code.
2. No wastewater other than domestic sewage shall be discharged at this location.
3. A minimum freeboard depth of at least two feet shall be maintained in each basin.
4. Adequate measures shall be taken to assure that unauthorized persons and animal pets are effectively excluded from contact with the discharge.
5. Adequate protective works shall be provided to assure that a flood which would be expected to occur on a frequency of once in a 100-year period, would not erode or otherwise render portions of the treatment and discharge facilities inoperable.
6. Treated or untreated sludge, or similar solid waste materials, shall not be discharged to or enter any drainage channels or Colorado River.
7. There shall be no surface flow of wastewater away from the discharge facilities, and there shall be no direct discharge to any drainage channel or to Colorado River.
8. Treatment and disposal by ponding shall be conducted in such manner that there shall be no stranded or exposed sewage solids.
9. Treatment and discharge of wastewater shall be conducted by technical procedures which will maintain a surface aerobic environment.
10. Infiltration facilities shall be maintained and operated so as to maximize infiltration and minimize the increase in salinity of the infiltrating wastewater.
11. Facilities shall be provided in the event of pump and/or commercial power failure.
12. The discharge shall not exceed 10,000 gallons-per-day.

B. Provisions

1. Prior to any modifications in this facility which could result in material change in the quality or quantity of wastewater discharged, or any material change in location of discharge, the discharger shall report in writing to the Regional Board.
2. Upon request from this Board's Executive Officer, the discharger shall furnish technical and/or monitoring reports on the treatment and discharge of waste.
3. In the event of any change in control or ownership of land or waste disposal facilities owned or controlled by the discharger, the discharger shall:
 - a. Notify the Board of such change; and
 - b. Transmit a copy of this Order to the succeeding owner or operator, and file a copy of the transmittal letter with this Board.

I, Arthur Swajian, Executive Officer, do hereby certify the foregoing is a full, true and correct copy of an Order adopted by the California Regional Water Quality Control Board, Colorado River Basin Region, on September 19, 1984.


Executive Officer

**CALIFORNIA REGIONAL WATER QUALITY CONTROL BOARD
COLORADO RIVER BASIN REGION**

**MONITORING AND REPORTING PROGRAM NO. 84-95
FOR**

RIVER REFLECTIONS

Northeast of Earp - San Bernardino County

Location of Discharge: SW $\frac{1}{4}$ of NE $\frac{1}{4}$ of Section 10, T1N, R26E, SBB&M

MONITORING

The discharger shall submit an annual status report on the following:

1. Estimate of maximum daily flow (gpd) of sewage discharged to basin(s).
2. Number of mobile home and RV spaces and restrooms presently connected to the sewerage system.
3. List any proposed changes in the sewage disposal facilities during the upcoming year.

REPORTING

1. Monitoring reports shall be submitted to the Regional Board annually by January 15th of each year.

Submit monitoring reports to:

California Regional Water Quality Control Board
Colorado River Basin Region
73-271 Highway 111, Suite 21
Palm Desert, CA 92260

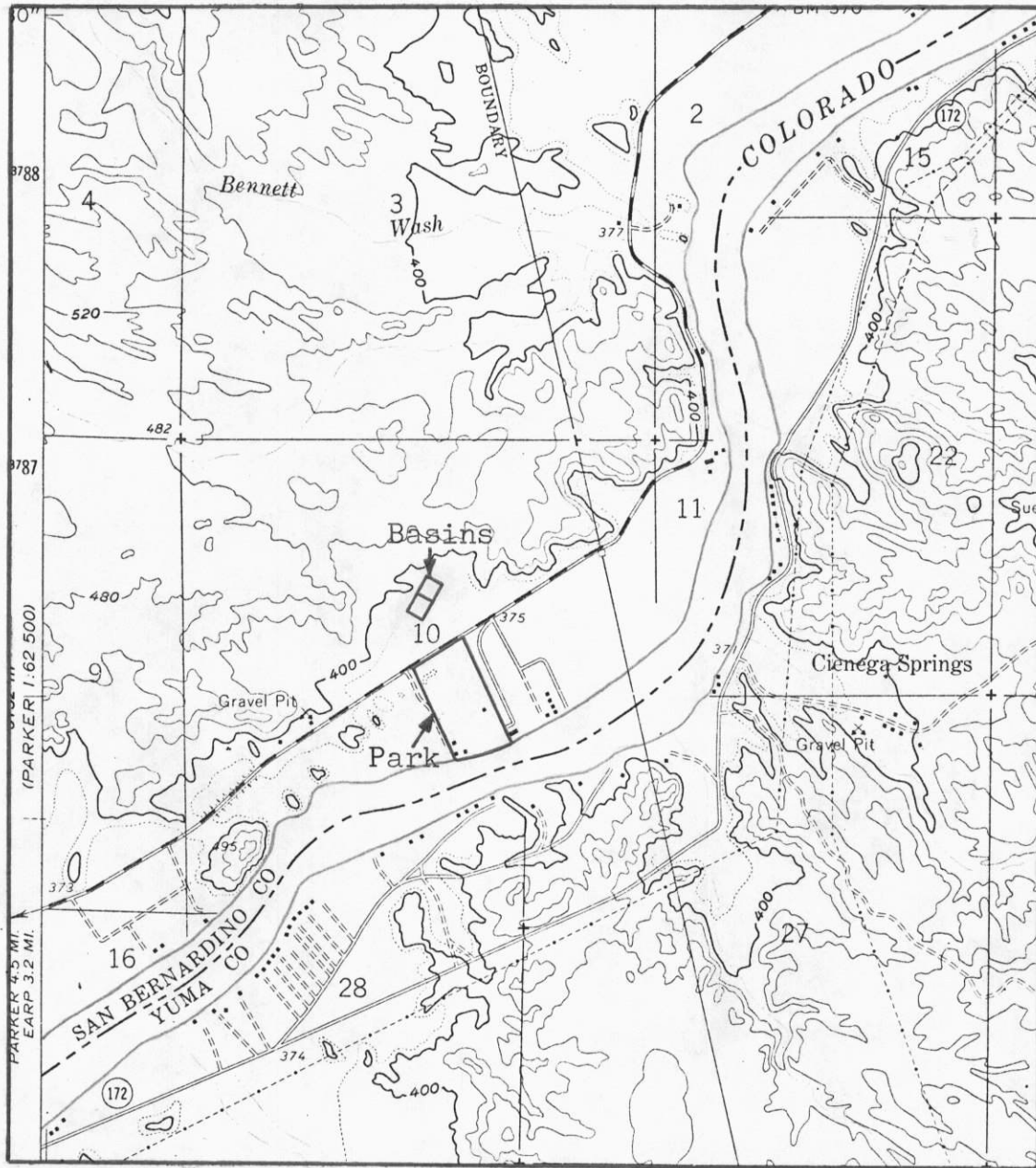
2. Immediately report to this office by telephone and follow-up by letter any failures of the sewerage system.

ORDERED BY:


Executive Officer


Date

CALIFORNIA REGIONAL WATER QUALITY CONTROL BOARD - 7



SITE MAP
RIVER REFLECTIONS
 North of Earp - San Bernardino County
 SW $\frac{1}{4}$ of the NE $\frac{1}{4}$ of Section 10, T1N, R26E, SBB&M
 USGS Crossroads 7.5 min. Topographic Map

Order 84-95