

**CALIFORNIA REGIONAL WATER QUALITY CONTROL BOARD
COLORADO RIVER BASIN REGION**

ORDER NO. 85-108

**WASTE DISCHARGE REQUIREMENTS
FOR
UNITED STATES DEPARTMENT OF THE INTERIOR
BUREAU OF LAND MANAGEMENT
SENATOR WASH RECREATION AREA
Northwest of Imperial Dam - Imperial County**

The California Regional Water Quality Control Board, Colorado River Basin Region, finds that:

1. Bureau of Land Management (hereinafter also referred to as the discharger), P.O. Box 5680, Yuma, Arizona 85364, submitted updated information on the discharge of waste, dated June 27, 1985.
2. The discharger discharges a maximum of 40,000 gallons-per-day of domestic sewage from a recreational vehicle area having an R.V. disposal station and seven (7) comfort stations (14 restrooms) that serve a large RV campground. Wastewater from the four (4) lower stations is discharged into septic tanks that flow to lift stations where the effluent is pumped into a pipeline, which flows into a leach field system. Wastewater from the upper stations, including the dump station, is discharged into septic tanks that flow directly into this common leach field system. The leach fields are located near the center of Section 6, T15S, R24E, SBB&M.
3. The discharger is reserving areas of sufficient size for possible future 100 percent replacement of the leach fields.
4. There are no domestic wells within 200 feet of the discharge facilities described in Findings No. 2 and 3 (above). The discharger reports the depth to ground water to be at least 150 feet.
5. The discharge at this recreation area has been subject to waste discharge requirements contained in Order No. 82-24.
6. The Water Quality Control Plan for the Colorado River Basin Region of California was adopted by the Regional Board on November 14, 1984. The Basin Plan contains water quality objectives for the Colorado Hydrologic Unit.
7. The beneficial uses of the ground water of the Colorado Hydrologic Unit are:
 - a. Municipal supply
 - b. Industrial supply
 - c. Agricultural supply

CALIFORNIA REGIONAL WATER QUALITY CONTROL BOARD
COLORADO RIVER BASIN REGION

ORDER NO. 82-108

WASTE DISCHARGE REQUIREMENTS

FOR

UNITED STATES DEPARTMENT OF THE INTERIOR

BUREAU OF LAND MANAGEMENT

SENATOR WASH RECREATION AREA

Northwest of Imperial Dam - Imperial County

The California Regional Water Quality Control Board, Colorado River Basin Region, finds that:

1. Bureau of Land Management (hereinafter also referred to as the discharger), P.O. Box 5880, Yuma, Arizona 85384, submitted updated information on the discharge of waste, dated June 27, 1985.
2. The discharger discharges a maximum of 40,000 gallons-per-day of domestic sewage from a recreational vehicle area having an R.V. disposal station and seven (7) comfort stations (14 restrooms) that serve a large RV campground. Wastewater from the four (4) lower stations is discharged into septic tanks that flow to lift stations where the effluent is pumped into a pipeline, which flows into a leach field system. Wastewater from the upper stations, including the dump station, is discharged into septic tanks that flow directly into this common leach field system. The leach fields are located near the center of section 8, T15S, R34E, S89X.M.
3. The discharger is reserving areas of sufficient size for possible future 100 percent replacement of the leach fields.
4. There are no domestic wells within 300 feet of the discharge facilities described in Findings No. 2 and 3 (above). The discharger reports the depth to ground water to be at least 150 feet.
5. The discharge at this recreation area has been subject to waste discharge requirements contained in Order No. 82-24.
6. The Water Quality Control Plan for the Colorado River Basin Region of California was adopted by the Regional Board on November 14, 1984. The Basin Plan contains water quality objectives for the Colorado Hydrologic Unit.
7. The beneficial uses of the ground water of the Colorado Hydrologic Unit are:
 - a. Municipal supply
 - b. Industrial supply
 - c. Agricultural supply

8. The Board has notified the discharger and interested agencies and persons of its intent to update waste discharge requirements for the discharge.
9. The Board in a public meeting heard and considered all comments pertaining to the discharge.
10. These waste discharge requirements govern existing facilities, which the discharger is currently operating, and therefore are exempt from the provisions of the California Environmental Quality Act in accordance with Section 15301 of Chapter 3, Title 14, of the California Administrative Code.

IT IS HEREBY ORDERED, the discharger shall comply with the following:

A. Discharge Specifications

1. Neither the treatment nor the discharge of wastewater shall create a pollution or a nuisance as defined in Division 7 of the California Water Code.
2. No wastewater other than domestic sewage shall be discharged at this location.
3. Wastewater discharged subsurface shall be retained underground with no surfacing.
4. Adequate measures shall be taken to assure that flood or surface drainage waters do not erode or otherwise render portions of the discharge facilities inoperable.
5. Septic tank cleanings shall be discharged only by a duly authorized service.

B. Provisions

1. Sufficient land area shall be reserved for possible future 100 percent replacement of the leach fields, until such time as the campground facilities are connected to a municipal sewerage system.
2. Upon request from this Board's Executive Officer, the discharger shall furnish technical and/or monitoring reports on the treatment and discharge of wastes.
3. Prior to any modifications in this facility which would result in material change in the quality or quantity of wastewater discharged, or any material change in location of discharge, the discharger shall report in writing to the Regional Board.
4. Prior to any change in ownership of this recreational vehicle campground, the discharger shall:

8. The Board has notified the discharger and interested agencies and persons of its intent to update waste discharge requirements for the discharge.
9. The Board in a public meeting heard and considered all comments pertaining to the discharge.
10. These waste discharge requirements govern existing facilities, which the discharger is currently operating, and therefore are exempt from the provisions of the California Environmental Quality Act in accordance with Section 15301 of Chapter 3, Title 14, of the California Administrative Code.

IT IS HEREBY ORDERED, the discharger shall comply with the following:

A. Discharge Specifications

1. Neither the treatment nor the discharge of wastewater shall create a pollution or a nuisance as defined in Division 7 of the California Water Code.
2. No wastewater other than domestic sewage shall be discharged at this location.
3. Wastewater discharged subsurface shall be retained underground with no surfacing.
4. Adequate measures shall be taken to assure that flood or surface drainage waters do not erode or otherwise render portions of the discharge facilities inoperable.
5. Septic tank cleanings shall be discharged only by a duly authorized service.

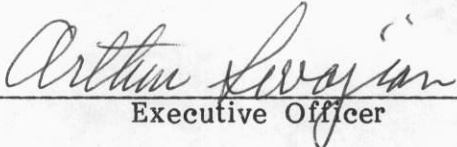
B. Provisions

1. Sufficient land area shall be reserved for possible future 100 percent replacement of the leach fields, until such time as the campground facilities are connected to a municipal sewerage system.
2. Upon request from this Board's Executive Officer, the discharger shall furnish technical and/or monitoring reports on the treatment and discharge of wastes.
3. Prior to any modifications in this facility which would result in material change in the quality or quantity of wastewater discharged, or any material change in location of discharge, the discharger shall report in writing to the Regional Board.
4. Prior to any change in ownership of this recreational vehicle campground, the discharger shall:

- a. Specify as a condition of transfer that the area specified in Provision B.1. (above) remain servient to the recreation area for the purpose of providing additional subsurface sewage disposal capacity, until such time as the campground facilities are connected to a municipal sewerage system.
- b. Transmit a copy of this Order to the succeeding owner or operator, and file a copy of the transmittal letter with this Board.

5. This Order supersedes Board Order No. 82-24.

I, Arthur Swajian, Executive Officer, do hereby certify the foregoing is a full, true and correct copy of an Order adopted by the California Regional Water Quality Control Board, Colorado River Basin Region, on November 20, 1985.



Executive Officer

c. Specifically as a condition of transfer that the area specified in Provision B.1. (above) remain servant to the recreation area for the purpose of providing additional subsurface sewage disposal capacity, until such time as the campground facilities are connected to a municipal sewerage system.

d. Transmit a copy of this Order to the succeeding owner or operator, and file a copy of the transmittal letter with this Board.

5. This Order supersedes Board Order No. 82-24.

I, Arthur Swaffan, Executive Officer, do hereby certify the foregoing is a full, true and correct copy of an Order adopted by the California Regional Water Quality Control Board, Colorado River Basin Region, on November 10, 1982.


Executive Officer

**CALIFORNIA REGIONAL WATER QUALITY CONTROL BOARD
COLORADO RIVER BASIN REGION**

MONITORING AND REPORTING PROGRAM NO. 85-108

FOR

UNITED STATES DEPARTMENT OF THE INTERIOR

BUREAU OF LAND MANAGEMENT

SENATOR WASH RECREATION AREA

Northwest of Imperial Dam - Imperial County

Location: Near the center of Section 6, T15S, R24E, SBB&M

MONITORING

This discharger shall submit an annual status report on the following:

1. Number of restrooms and dump stations presently connected to the sewerage system.
2. List any proposed changes in the sewage disposal facilities during the upcoming year.

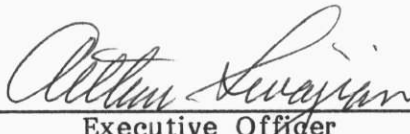
REPORTING

1. Annual reports are to be submitted by January 15th of each year to:

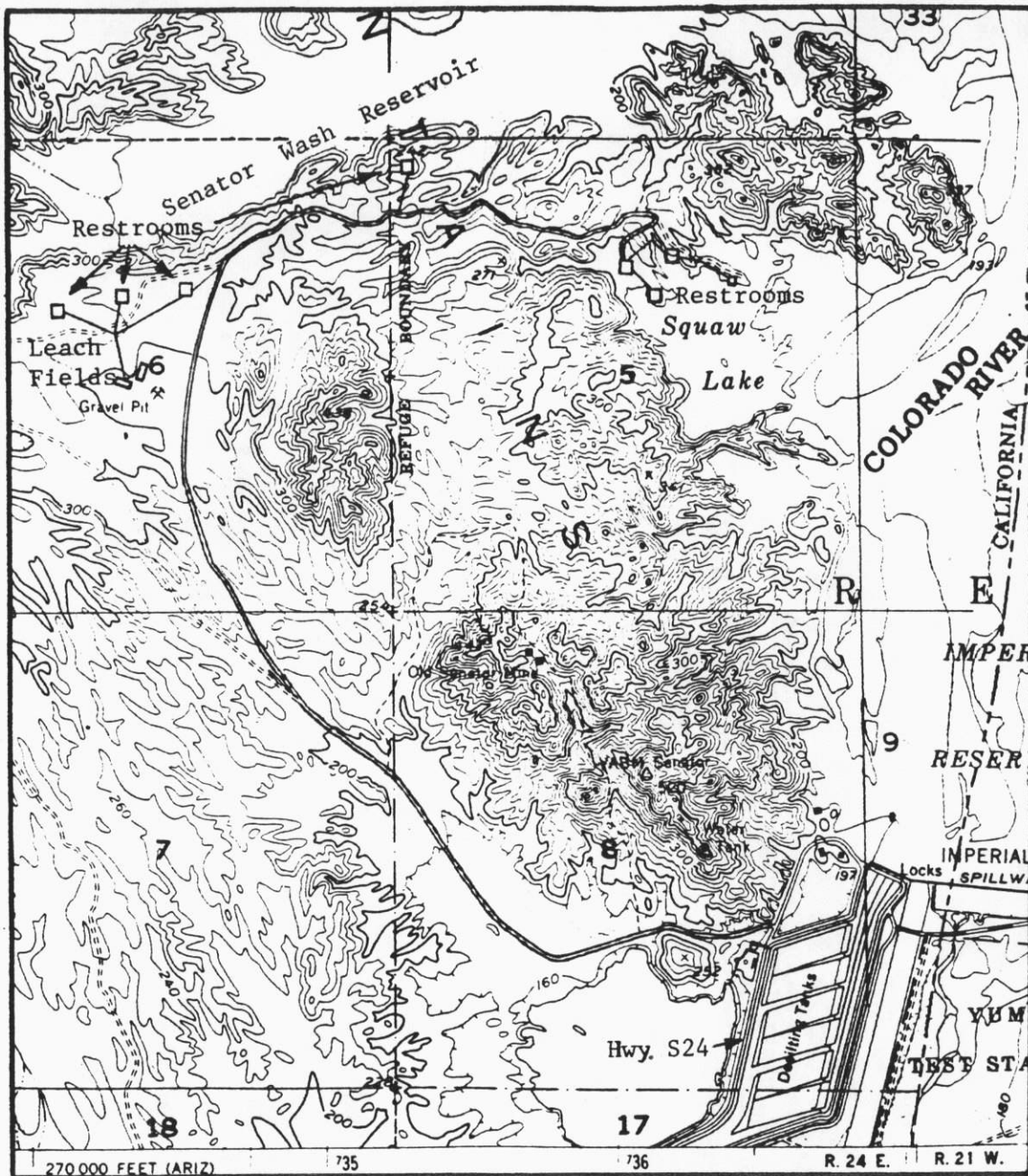
California Regional Water Quality Control Board
Colorado River Basin Region
73-271 Highway 111, Suite 21
Palm Desert, CA 92260

2. Report immediately any surfacing of wastewater or other failures of the system by telephone and follow-up by letter.

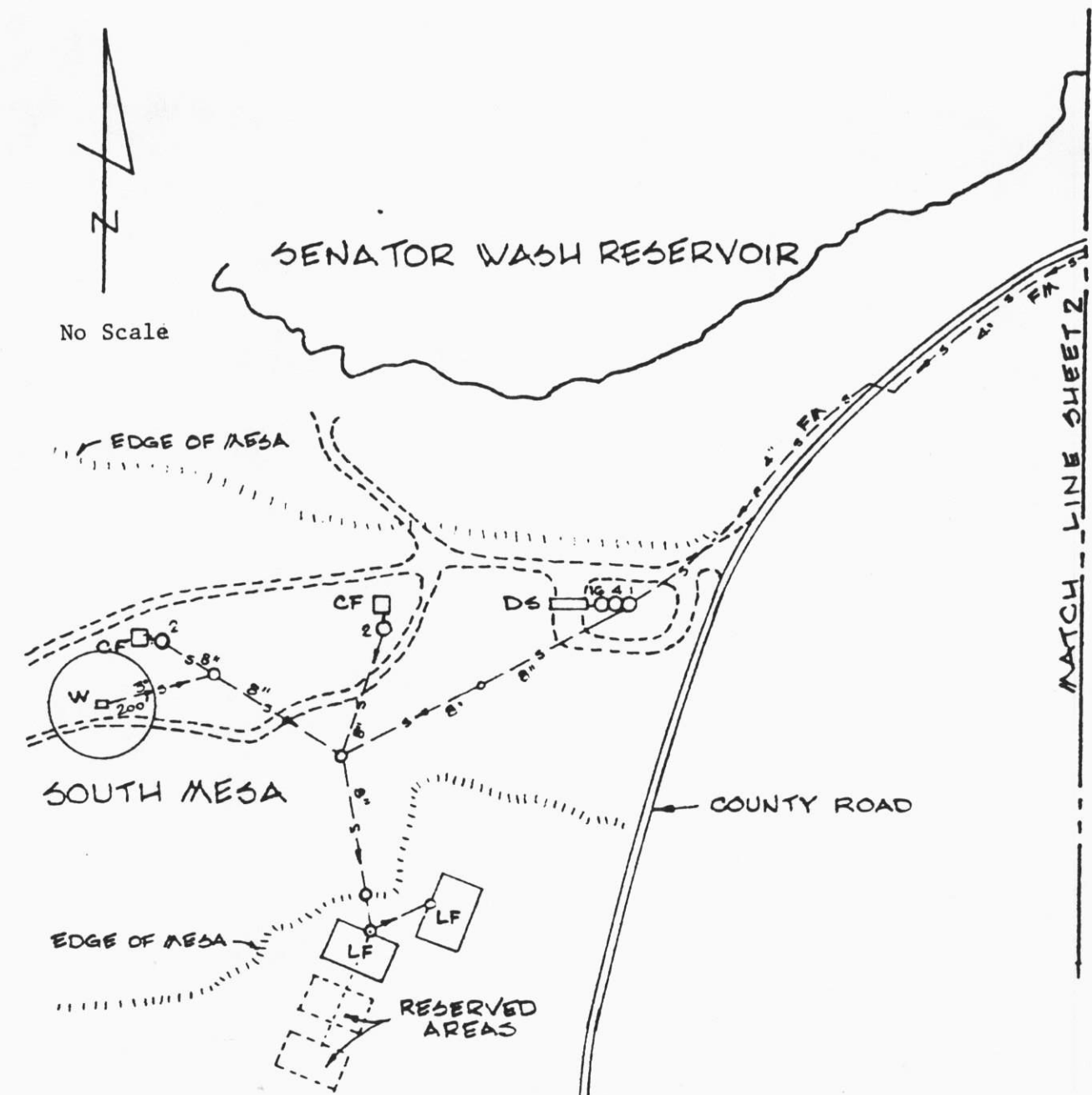
Ordered By:


Executive Officer


Date



SITE MAP
 U.S. DEPARTMENT OF THE INTERIOR
 BLM SENATOR WASH RECREATION AREA
 Northwest of Imperial Dam - Imperial County
 Sewage Disposal Area: near the center of
 Section 6, T15S, R24E, SBB&M
 USGS Imperial Reservoir Ariz.-Calif. 7.5 min. Topographic Map



LEGEND

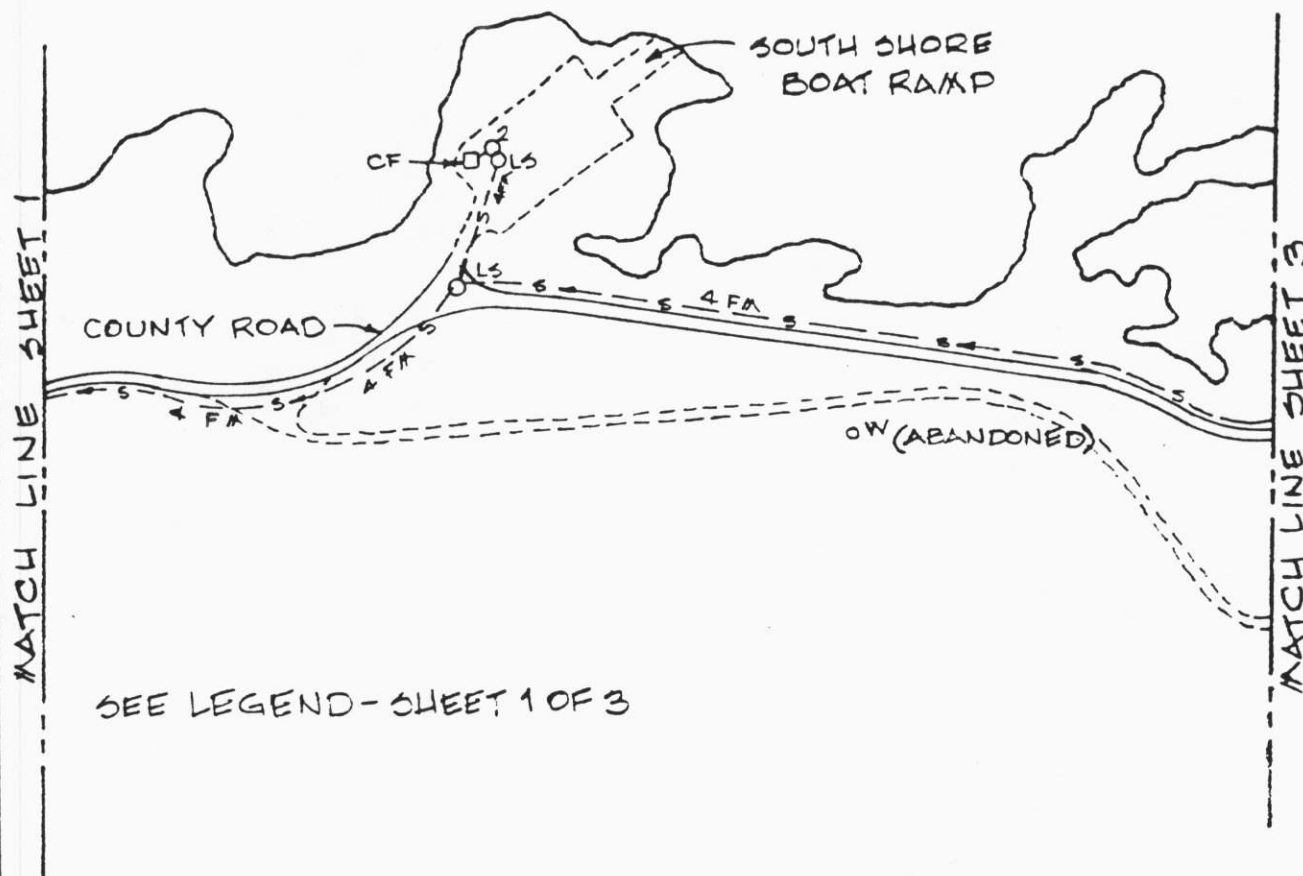
- CF = COMFORT STATION
- DS = RV DUMP STATION
- W = WATER WELL
- LF = LEACH FIELD
- LS = LIFT STATION (PUMPS)
- O2 = SEPTIC TANK, SIZE IN 1,000 GAL'S.
- S- = SEWER, SIZE IN INCHES.
- O = MANHOLE
- FM = FORCE MAIN

U.S. DEPARTMENT OF THE INTERIOR
 BLM SENATOR WASH RECREATION AREA
 Northwest of Imperial Dam
 Imperial County

SEWAGE DISPOSAL FACILITIES
 SKETCH NO. 1

SENATOR WASH RESERVOIR

No Scale

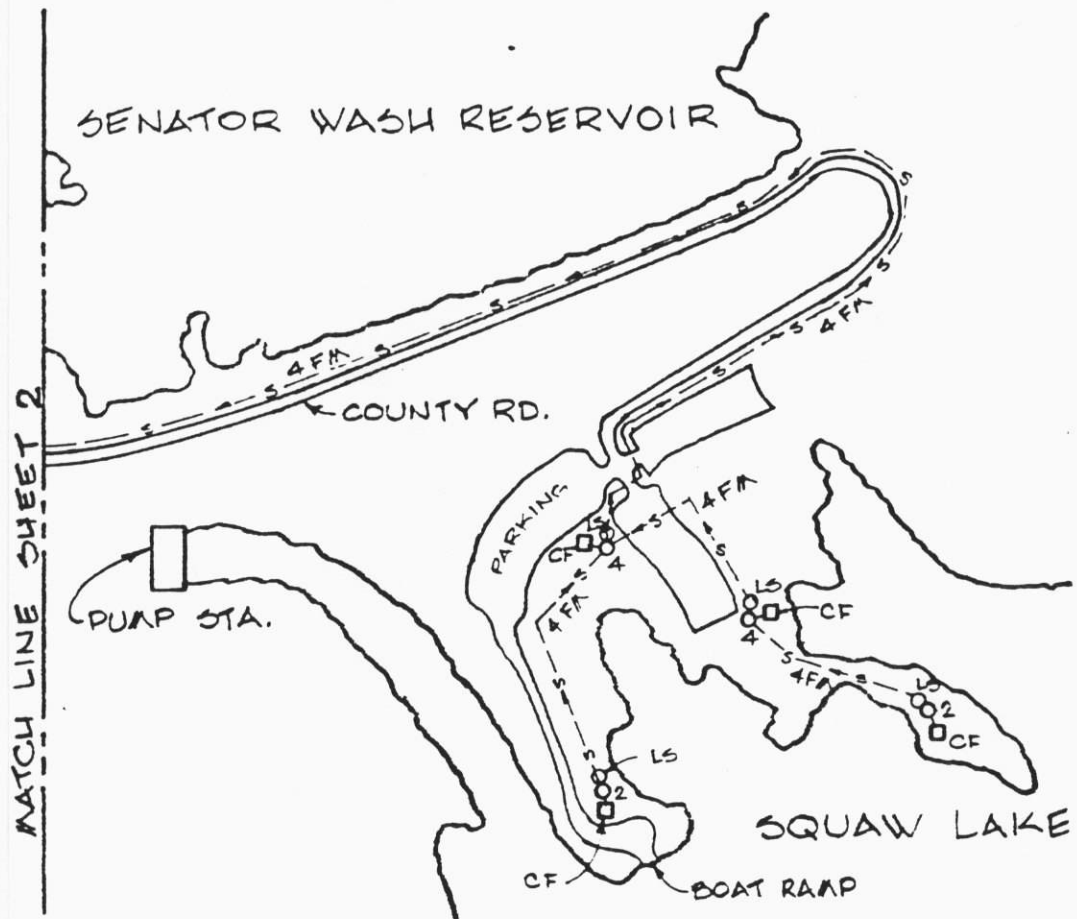


SEWAGE DISPOSAL FACILITIES
SKETCH NO. 2

U.S. DEPARTMENT OF THE INTERIOR
BLM SENATOR WASH RECREATION AREA
Northwest of Imperial Dam - Imperial County



No Scale



SEE LEGEND - SHEET 1 OF 3

SEWAGE DISPOSAL FACILITIES
SKETCH NO. 3

U.S. DEPARTMENT OF THE INTERIOR
BLM SENATOR WASH RECREATION AREA
Northwest of Imperial Dam - Imperial County