

**CALIFORNIA REGIONAL WATER QUALITY CONTROL BOARD
COLORADO RIVER BASIN REGION**

ORDER NO. 85-11

**WASTE DISCHARGE REQUIREMENTS
FOR
BIG BEAR AREA REGIONAL WASTEWATER AGENCY
Export of Reclaimed Wastewater to Lucerne Valley
Lucerne Valley - San Bernardino County**

The California Regional Water Quality Control Board, Colorado River Basin Region, finds that:

1. Big Bear Area Regional Wastewater Agency (hereinafter also referred to as the discharger), P. O. Box 517, Big Bear City, California, 92314, submitted an updated report of waste discharge, dated September 17, 1984.
2. The discharger discharges a peak month average daily flow of 3.0 MGD and a peak week average daily flow of 4.6 MGD of reclaimed wastewater from an oxidation ditch type wastewater treatment plant with a design flow of 5.0 MGD. The discharger proposes to expand the treatment facilities to treat 9.3 MGD of wastewater. The reclaimed wastewater will be discharged into a concrete pressure regulating reservoir before being used for irrigation of a 517 acre field. Reclaimed wastewater is used for irrigation of fodder, fiber and seed crops in Section 14, T4N, R1E, SBB&M. The discharger may, in the future, use the reclaimed wastewater for irrigation of pastures; and for irrigation of food crops which undergo extensive commercial physical and commercial chemical processing. When the reclaimed wastewater is not being used for irrigation, it is discharged into unlined holding basins for infiltration at the above location.
3. The discharger may occasionally discharge digested sewage sludge onto the irrigated field.
4. This discharge has been subject to waste discharge requirements adopted in Board Order No. 83-65.
5. The Water Quality Control Plan for the Colorado River Basin Region of California was adopted by the Regional Board on November 14, 1984. The Basin Plan contains water quality objectives for the Lucerne Hydrologic Unit.
6. The beneficial uses of the ground waters in the Lucerne Hydrologic Unit are:
 - a. Municipal supply
 - b. Agricultural supply
 - c. Industrial supply

*replaced
by 90-026*

7. The Board has notified the discharger and interested agencies and persons of its intent to update waste discharge requirements for the discharge.
8. The Board in a public meeting heard and considered all comments pertaining to the discharge.
9. The Big Bear Area Regional Wastewater Agency has approved Negative Declaration SCH. No. 85020402 (approval date March 11, 1985) for this proposed discharge. The Regional Board has reviewed this Negative Declaration. The following waste discharge requirements are designed to assure against any significant adverse effect on water quality.

IT IS HEREBY ORDERED, the discharger shall comply with the following:

A. Discharge Specifications

1. Neither the treatment nor the discharge of wastewater shall create a pollution or a nuisance as defined in Division 7 of the California Water Code.
2. Reclaimed wastewater shall meet the requirements of Wastewater Reclamation Criteria, Title 22, Division 4, California Administrative Code as to particular use. Particularly, reclaimed wastewater used for irrigation shall be limited to fiber, fodder, and seed crops; pasture for non-milking animals; and for food crops which the State Department of Health considers as receiving sufficient commercial physical or commercial chemical processing to destroy pathogenic agents prior to human consumption.
3. Wastewater used for irrigation or discharged to infiltration basins shall be confined to lands owned or controlled by the discharger.
4. Adequate protective works shall be provided to assure that flood or surface drainage waters do not erode or otherwise render any portion of the discharge facilities inoperable.
5. The discharge shall not approach closer than 500 feet to any water well, unless approved by the San Bernardino County Department of Environmental Health Services, except that monitoring wells may be located within the site.
6. Wastewater holding basins shall have freeboard depth of not less than two feet.
7. Sludge discharged in accordance with Finding No. 3 (above) shall originate only from the Big Bear Regional Treatment Facility.

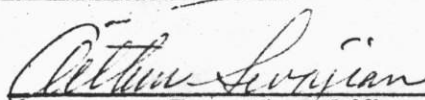
8. Representative samples of wastewater used for irrigation or discharged to infiltration basins shall not contain constituents in excess of the following limits:

Constituents	Units	Average ¹	Maximum ²
Total Dissolved Solids	mg/l	500	565
Chloride (Cl)	mg/l	60	80
Sulfate (SO ₄)	mg/l	60	80
Fluoride (F)	mg/l	0.8	1.0
Boron (B)	mg/l	-	0.75
20°C BOD ₅	mg/l	30	50
Suspended Solids	mg/l	30	50
Settleable Matter	ml/l	0.5	1.0

B. Provisions

1. The discharger's wastewater treatment plant shall be supervised and operated by persons possessing certificates of appropriate grade pursuant to Chapter 4, Subchapter 14, Title 23, California Administrative Code, and who are otherwise capable of adequately maintaining and operating the wastewater treatment and disposal facilities.
2. Prior to any substantial changes in the quality of wastewater being discharged to this facility, or modification of treatment methods which would result in material change in the quality or quantity of wastewater discharged, or any material change in the location of the discharge, the discharger shall report thereon to this Board.
3. At least 30 days prior to the anticipated planting of a food crop, the discharger shall submit a list of those food crop(s) which are to be planted; and, via the Regional Board, shall obtain State Department of Health Services clearance for each individual type of food crop in advance of said planting.
4. The discharger shall comply with "Monitoring and Reporting Program No. 85-11", and future revisions thereto, as specified by the Executive Officer.
5. This Order supersedes Board Order No. 83-65.

I, Arthur Swajian, Executive Officer, do hereby certify the foregoing is a full, true and correct copy of an Order adopted by the California Regional Water Quality Control Board, Colorado River Basin Region, on March 13, 1985.


Executive Officer

1. Averages will be calculated from the last six analyses taken.
2. Maximum on any one test.

**CALIFORNIA REGIONAL WATER QUALITY CONTROL BOARD
COLORADO RIVER BASIN REGION**

**MONITORING AND REPORTING PROGRAM NO. 85-11
FOR**

**BIG BEAR AREA REGIONAL WASTEWATER AGENCY
Export of Reclaimed Wastewater to Lucerne Valley
Lucerne Valley - San Bernardino County**

Location of Discharge: Section 14, T4N, R1E, SBB&M

RECLAIMED WASTEWATER MONITORING

Representative samples of the reclaimed wastewater shall be taken at the location of beneficial reuse or at the treatment facilities. Said samples shall be monitored for the following:

Constituent	Unit	Type of Sample	Sampling Frequency
1. Calcium (Ca)	mg/l	24 Hr. Composite	Quarterly
2. Magnesium (Mg)	mg/l	24 Hr. Composite	Quarterly
3. Sodium (Na)	mg/l	24 Hr. Composite	Quarterly
4. Potassium (K)	mg/l	24 Hr. Composite	Quarterly
5. Carbonate (CO ₃)	mg/l	24 Hr. Composite	Quarterly
6. Bicarbonate (HCO ₃)	mg/l	24 Hr. Composite	Quarterly
7. Total Phosphate (PO ₄)	mg/l	24 Hr. Composite	Quarterly
8. Nitrate (NO ₃)	mg/l	24 Hr. Composite	Quarterly
9. Ammonia (N)	mg/l	24 Hr. Composite	Quarterly
10. Sulfate (SO ₄)	mg/l	24 Hr. Composite	Monthly
11. Chloride (Cl)	mg/l	24 Hr. Composite	Monthly
12. Boron (B)	mg/l	24 Hr. Composite	Monthly
13. Fluoride (F)	mg/l	24 Hr. Composite	Monthly
14. Total Dissolved Solids	mg/l	24 Hr. Composite	Monthly

Constituent	Unit	Type of Sample	Sampling Frequency
15. Suspended Solids	mg/l	24 Hr. Composite	Weekly
16. 20°C BOD ₅	mg/l	24 Hr. Composite	Weekly
17. Settleable Matter	ml/l	Grab	Daily
18. Quantity of Discharge	MGD	—	Daily*
19. Electrical Conductivity EC X 10 ⁶ at 25°C	Micromhs/cm	Grab	Daily

SLUDGE MONITORING

At least 30 days prior to discharge of sewage sludge onto the irrigated field, Big Bear Area Regional Wastewater Agency shall notify the Board to obtain State Department of Health monitoring criteria.

Big Bear Area Regional Wastewater Agency shall report quarterly on the quantity of sewage sludge disposed of at this site.

REPORTING

Monitoring reports shall be submitted to the Regional Board as follows:

Quarterly Reports - January 15, April 15, July 15 and October 15 of each year.

Monthly, Weekly, and Daily Reports - by the 15th day of the following month.

Forward monitoring reports to:

California Regional Water Quality Control Board
Colorado River Basin Region
73-271 Highway 111, Suite 21
Palm Desert, CA 92260

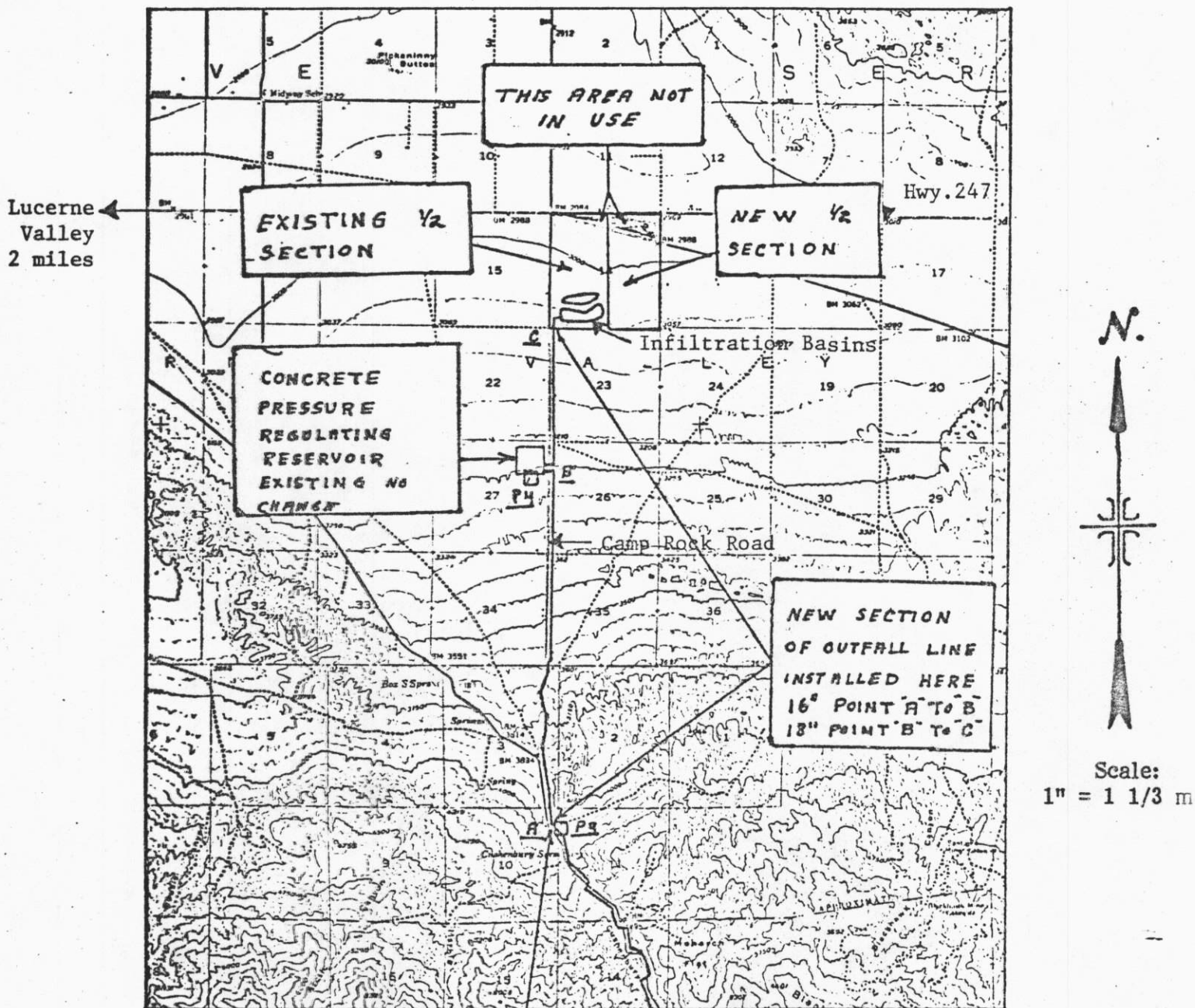
ORDERED BY:

Arthur Sevastian
Executive Officer

March 15, 1985
Date

* For each day with average monthly flow calculated.

CALIFORNIA REGIONAL WATER QUALITY CONTROL BOARD - 7



SITE MAP

BIG BEAR AREA REGIONAL WASTEWATER AGENCY
Export of Reclaimed Wastewater to Lucerne Valley
Lucerne Valley - San Bernardino County
Section 14, T4N, R1E, SBB&M
USGS Lucerne Valley 7.5 min. Topographic Map

Order No. 85-11