

**CALIFORNIA REGIONAL WATER QUALITY CONTROL BOARD
COLORADO RIVER BASIN REGION**

ORDER NO. 85-43

**WASTE DISCHARGE REQUIREMENTS
FOR
LUCERNE VALLEY COIN LAUNDRY
Lucerne Valley - San Bernardino County**

The California Regional Water Quality Control Board, Colorado River Basin Region, finds that:

1. Hitchin Lucerne, Inc., (hereinafter also referred to as the discharger), P. O. Box 748, Lucerne Valley, California, 92356, submitted a Report of Waste Discharge, dated February 20, 1985.
2. The discharger proposes to discharge from a laundromat, which is to be added to a market, a maximum of 24,000 gallons-per-day of washwater. The wastewater is to be discharged into a large clarifier and rock filter, and would then flow into six (6) seepage pits located in the W $\frac{1}{2}$ of the NW $\frac{1}{4}$ of Section 13, T4N, R1W, SBB&M. Domestic sewage from a restroom is to be discharged into a separate septic tank/seepage pit system.
3. The discharger is reserving areas of sufficient size for possible future 100 percent replacement of the seepage pits.
4. There are no domestic wells within 200 feet of the proposed discharge facilities described in Findings No. 2 and 3 (above). However, the existing well for this complex is approximately 250 feet from the nearest seepage pit, and depth to water is about 90 feet.
5. The Water Quality Control Plan for the Colorado River Basin Region of California was adopted by the Regional Board on November 14, 1984. The Basin Plan contains water quality objectives for the Lucerne Hydrologic Unit.
6. The beneficial uses of the ground water of the Lucerne Hydrologic Unit are:
 - a. Municipal supply
 - b. Industrial supply
 - c. Agricultural supply
7. The Board has notified the discharger and interested agencies and persons of its intent to prescribe waste discharge requirements for the proposed discharge.
8. The Board in a public meeting heard and considered all comments pertaining to the discharge.

*Superseded
by: Board Ord.
95-013
1/25/95*

*Change of Name
11/27/88
order #
by 88-16*

CALIFORNIA REGIONAL WATER QUALITY CONTROL BOARD
COLORADO RIVER BASIN REGION

ORDER NO. 85-11

WASTE DISCHARGE REQUIREMENTS

FOR

BUCKNER VALLEY COIN. (UNBRY)

Lucerne Valley - San Bernardino County

The California Regional Water Quality Control Board, Colorado River Basin Region, finds that:

1. Bitchin Buckner, Inc. (hereinafter also referred to as the discharger), P.O. Box 7, Lucerne Valley, California, 92350, submitted a Report of Waste Discharge, dated February 2, 1985.
2. The discharger proposes to discharge from a landform, which is to be added to a meadow, a maximum of 34,000 gallons-per-day of wastewater. The wastewater is to be discharged into a large channel and rock filter, and would flow into six (6) separate pits located in the W of the NW 1/4 of section 13, 14, 15, 16, 17, 18, 19, 20, 21, 22, 23, 24, 25, 26, 27, 28, 29, 30, 31, 32, 33, 34, 35, 36, 37, 38, 39, 40, 41, 42, 43, 44, 45, 46, 47, 48, 49, 50, 51, 52, 53, 54, 55, 56, 57, 58, 59, 60, 61, 62, 63, 64, 65, 66, 67, 68, 69, 70, 71, 72, 73, 74, 75, 76, 77, 78, 79, 80, 81, 82, 83, 84, 85, 86, 87, 88, 89, 90, 91, 92, 93, 94, 95, 96, 97, 98, 99, 100, 101, 102, 103, 104, 105, 106, 107, 108, 109, 110, 111, 112, 113, 114, 115, 116, 117, 118, 119, 120, 121, 122, 123, 124, 125, 126, 127, 128, 129, 130, 131, 132, 133, 134, 135, 136, 137, 138, 139, 140, 141, 142, 143, 144, 145, 146, 147, 148, 149, 150, 151, 152, 153, 154, 155, 156, 157, 158, 159, 160, 161, 162, 163, 164, 165, 166, 167, 168, 169, 170, 171, 172, 173, 174, 175, 176, 177, 178, 179, 180, 181, 182, 183, 184, 185, 186, 187, 188, 189, 190, 191, 192, 193, 194, 195, 196, 197, 198, 199, 200, 201, 202, 203, 204, 205, 206, 207, 208, 209, 210, 211, 212, 213, 214, 215, 216, 217, 218, 219, 220, 221, 222, 223, 224, 225, 226, 227, 228, 229, 230, 231, 232, 233, 234, 235, 236, 237, 238, 239, 240, 241, 242, 243, 244, 245, 246, 247, 248, 249, 250, 251, 252, 253, 254, 255, 256, 257, 258, 259, 260, 261, 262, 263, 264, 265, 266, 267, 268, 269, 270, 271, 272, 273, 274, 275, 276, 277, 278, 279, 280, 281, 282, 283, 284, 285, 286, 287, 288, 289, 290, 291, 292, 293, 294, 295, 296, 297, 298, 299, 300, 301, 302, 303, 304, 305, 306, 307, 308, 309, 310, 311, 312, 313, 314, 315, 316, 317, 318, 319, 320, 321, 322, 323, 324, 325, 326, 327, 328, 329, 330, 331, 332, 333, 334, 335, 336, 337, 338, 339, 340, 341, 342, 343, 344, 345, 346, 347, 348, 349, 350, 351, 352, 353, 354, 355, 356, 357, 358, 359, 360, 361, 362, 363, 364, 365, 366, 367, 368, 369, 370, 371, 372, 373, 374, 375, 376, 377, 378, 379, 380, 381, 382, 383, 384, 385, 386, 387, 388, 389, 390, 391, 392, 393, 394, 395, 396, 397, 398, 399, 400, 401, 402, 403, 404, 405, 406, 407, 408, 409, 410, 411, 412, 413, 414, 415, 416, 417, 418, 419, 420, 421, 422, 423, 424, 425, 426, 427, 428, 429, 430, 431, 432, 433, 434, 435, 436, 437, 438, 439, 440, 441, 442, 443, 444, 445, 446, 447, 448, 449, 450, 451, 452, 453, 454, 455, 456, 457, 458, 459, 460, 461, 462, 463, 464, 465, 466, 467, 468, 469, 470, 471, 472, 473, 474, 475, 476, 477, 478, 479, 480, 481, 482, 483, 484, 485, 486, 487, 488, 489, 490, 491, 492, 493, 494, 495, 496, 497, 498, 499, 500, 501, 502, 503, 504, 505, 506, 507, 508, 509, 510, 511, 512, 513, 514, 515, 516, 517, 518, 519, 520, 521, 522, 523, 524, 525, 526, 527, 528, 529, 530, 531, 532, 533, 534, 535, 536, 537, 538, 539, 540, 541, 542, 543, 544, 545, 546, 547, 548, 549, 550, 551, 552, 553, 554, 555, 556, 557, 558, 559, 560, 561, 562, 563, 564, 565, 566, 567, 568, 569, 570, 571, 572, 573, 574, 575, 576, 577, 578, 579, 580, 581, 582, 583, 584, 585, 586, 587, 588, 589, 590, 591, 592, 593, 594, 595, 596, 597, 598, 599, 600, 601, 602, 603, 604, 605, 606, 607, 608, 609, 610, 611, 612, 613, 614, 615, 616, 617, 618, 619, 620, 621, 622, 623, 624, 625, 626, 627, 628, 629, 630, 631, 632, 633, 634, 635, 636, 637, 638, 639, 640, 641, 642, 643, 644, 645, 646, 647, 648, 649, 650, 651, 652, 653, 654, 655, 656, 657, 658, 659, 660, 661, 662, 663, 664, 665, 666, 667, 668, 669, 670, 671, 672, 673, 674, 675, 676, 677, 678, 679, 680, 681, 682, 683, 684, 685, 686, 687, 688, 689, 690, 691, 692, 693, 694, 695, 696, 697, 698, 699, 700, 701, 702, 703, 704, 705, 706, 707, 708, 709, 710, 711, 712, 713, 714, 715, 716, 717, 718, 719, 720, 721, 722, 723, 724, 725, 726, 727, 728, 729, 730, 731, 732, 733, 734, 735, 736, 737, 738, 739, 740, 741, 742, 743, 744, 745, 746, 747, 748, 749, 750, 751, 752, 753, 754, 755, 756, 757, 758, 759, 760, 761, 762, 763, 764, 765, 766, 767, 768, 769, 770, 771, 772, 773, 774, 775, 776, 777, 778, 779, 780, 781, 782, 783, 784, 785, 786, 787, 788, 789, 790, 791, 792, 793, 794, 795, 796, 797, 798, 799, 800, 801, 802, 803, 804, 805, 806, 807, 808, 809, 810, 811, 812, 813, 814, 815, 816, 817, 818, 819, 820, 821, 822, 823, 824, 825, 826, 827, 828, 829, 830, 831, 832, 833, 834, 835, 836, 837, 838, 839, 840, 841, 842, 843, 844, 845, 846, 847, 848, 849, 850, 851, 852, 853, 854, 855, 856, 857, 858, 859, 860, 861, 862, 863, 864, 865, 866, 867, 868, 869, 870, 871, 872, 873, 874, 875, 876, 877, 878, 879, 880, 881, 882, 883, 884, 885, 886, 887, 888, 889, 890, 891, 892, 893, 894, 895, 896, 897, 898, 899, 900, 901, 902, 903, 904, 905, 906, 907, 908, 909, 910, 911, 912, 913, 914, 915, 916, 917, 918, 919, 920, 921, 922, 923, 924, 925, 926, 927, 928, 929, 930, 931, 932, 933, 934, 935, 936, 937, 938, 939, 940, 941, 942, 943, 944, 945, 946, 947, 948, 949, 950, 951, 952, 953, 954, 955, 956, 957, 958, 959, 960, 961, 962, 963, 964, 965, 966, 967, 968, 969, 970, 971, 972, 973, 974, 975, 976, 977, 978, 979, 980, 981, 982, 983, 984, 985, 986, 987, 988, 989, 990, 991, 992, 993, 994, 995, 996, 997, 998, 999, 1000.
3. The discharger is removing waste of sufficient size for possible future land disposal.
4. There are no domestic wells within 300 feet of the proposed discharge facilities described in Findings No. 2 and 3 (above). However, the nearest well for this complex is approximately 300 feet from the nearest seepage pit, and depth to water is about 30 feet.
5. The water quality control plan for the Colorado River Basin Region of California was adopted by the Regional Board on November 14, 1984. The Basin Plan contains water quality objectives for the Lucerne Hydrologic Unit.
6. The beneficial uses of the ground water of the Lucerne Hydrologic Unit are:
 - a. Municipal supply
 - b. Industrial supply
 - c. Agricultural supply
7. The Board has notified the discharger and interested agencies and persons of its intent to prescribe waste discharge requirements for the proposed discharge.
8. The Board is a public meeting heard and considered all comments pertaining to the discharge.

9. The San Bernardino County Planning Department has approved Negative Declaration File No. NHSA/81-0375 (approval date March 10, 1982) for this market complex, which includes a proposed laundromat. The Regional Board has reviewed this Negative Declaration. The below waste discharge requirements are designed to assure against any significant adverse effects on water quality.

IT IS HEREBY ORDERED, the discharger shall comply with the following:

A. Discharge Specifications

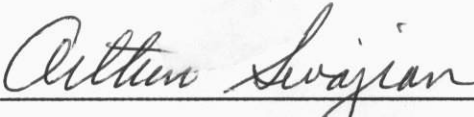
1. Neither the treatment nor the discharge of wastewater shall create a pollution or a nuisance as defined in Division 7 of the California Water Code.
2. No wastewater other than domestic sewage and laundromat wastewater shall be discharged at this location.
3. Domestic sewage shall not be discharged via the laundromat disposal facilities.
4. Wastewater discharged subsurface shall be retained underground with no surfacing.
5. Adequate measures shall be taken to assure that flood or surface drainage waters do not erode or otherwise render portions of the discharge facilities inoperable.
6. Clarifier, filter tank and septic tank cleanings shall be discharged only by a duly authorized service.

B. Provisions

1. Sufficient land area shall be reserved for possible future 100 percent replacement of the seepage pits until such time as this laundromat is connected to a municipal sewerage system.
2. This Order includes the attached "Monitoring and Reporting Program No. 85-43", and future revisions thereto, as specified by the Executive Officer.
3. Prior to any modifications in this facility which would result in material change in the quality or quantity of wastewater discharged, or any material change in location of discharge, the discharger shall report in writing to the Regional Board.
4. Prior to any change of ownership of this facility, the discharger shall:

- a. Specify as a condition of transfer that the area specified in Provision B.1 (above) remain servient to the laundromat for the purpose of providing additional subsurface wastewater disposal capacity, until such time as this building is connected to a municipal sewerage system.
- b. Transmit a copy of this Order to the succeeding owner or operator, and file a copy of the transmittal letter with this Board.

I, Arthur Swajian, Executive Officer, do hereby certify the foregoing is a full, true and correct copy of an Order adopted by the California Regional Water Quality Control Board, Colorado River Basin Region, on May 22, 1985.



Executive Officer

CALIFORNIA REGIONAL WATER QUALITY CONTROL BOARD
COLORADO RIVER BASIN REGION

MONITORING AND REPORTING PROGRAM NO. 85-43
FOR
LUCERNE VALLEY COIN LAUNDRY
Lucerne Valley - San Bernardino County

Location of Discharge: $W\frac{1}{2}$, $NW\frac{1}{4}$ of Section 13, T4N, R1W, SBB&M

MONITORING

The discharger shall report to the Regional Board concerning the following:

1. Water meter reading to determine discharge flow - monthly reporting frequency.

REPORTING

Monthly monitoring reports shall be submitted to the Regional Board on a quarterly basis - by January 15, April 15, July 15 and October 15 of each year.

Mail reports to:

California Regional Water Quality Control Board
Colorado River Basin Region
73-271 Highway 111, Suite 21
Palm Desert, CA 92260

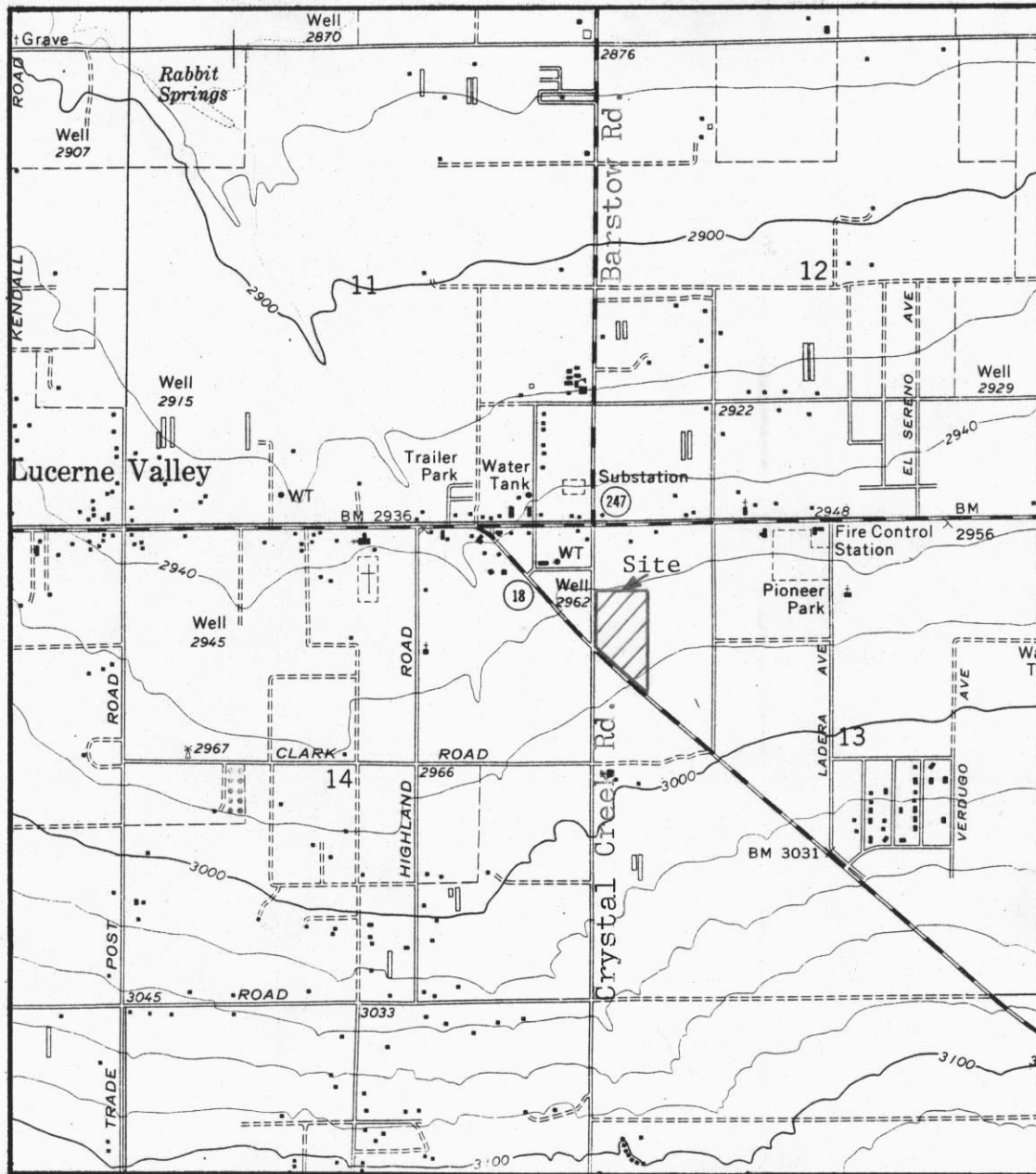
ORDERED BY: _____

Arthur Swajian
Executive Officer

May 22, 1985

Date

CALIFORNIA REGIONAL WATER QUALITY CONTROL BOARD - 7



SITE MAP

LUCERNE VALLEY COIN LAUNDRY
 Lucerne Valley - San Bernardino County
 Portion of the W $\frac{1}{2}$, NW $\frac{1}{4}$ of Section 13, T4N, R1W, SBB&M
 USGS Lucerne Valley 7.5 min. Topographic Map

Order No. 85-43