

**CALIFORNIA REGIONAL WATER QUALITY CONTROL BOARD
COLORADO RIVER BASIN REGION**

ORDER NO. 85-63

**WASTE DISCHARGE REQUIREMENTS
FOR
MOUNT SAN JACINTO WINTER PARK AUTHORITY
West of Palm Springs - Riverside County**

The California Regional Water Quality Control Board, Colorado River Basin Region, finds that:

1. Mount San Jacinto Winter Park Authority (hereinafter also referred to as the discharger), P. O. Drawer FF, Palm Springs, California, 92263, submitted updated information on the discharge of waste, dated March 28, 1985.
2. The discharger is discharging a flow of domestic sewage that varies from a minimum of 2,000 gallons-per-operating-day to a maximum of 7,000 gallons-per-operating-day from restrooms and a restaurant at the upper station of the Palm Springs Aerial Tramway. The wastewater is piped from the station to two (2) septic tank/leach field systems located in Long Valley, which is in the NE $\frac{1}{4}$ of Section 23, T4S, R3E, SBB&M.
3. The discharge has been subject to waste discharge requirements adopted in Board Order No. 76-53.
4. The discharger has sufficient area available for possible future 100 percent replacement of the leach fields.
5. The Water Quality Control Plan for the Colorado River Basin Region of California was adopted by the Regional Board on November 14, 1984. The Basin Plan contains water quality objectives for Coachella Hydrologic Subunit.
6. The location of wastewater disposal is within Tahquitz Creek drainage system, and the beneficial uses of the downstream waters are:
 - a. Domestic supply
 - b. Municipal supply
 - c. Recreational supply
 - d. Industrial supply
 - e. Agricultural supply
 - f. Groundwater recharge
 - g. Wildlife habitat
7. The Board has notified the discharger and interested agencies and persons of its intent to update waste discharge requirements for the discharge.

*Superseded
09-19-90
by 90-061*

8. The Board in a public meeting heard and considered all comments pertaining to the discharge.
9. These waste discharge requirements govern an existing facility, which the discharger is currently operating, and therefore is exempt from the provisions of the California Environmental Quality Act in accordance with Section 15301 of Title 14, Chapter 3, of the California Administrative Code.

IT IS HEREBY ORDERED, the discharger shall comply with the following:

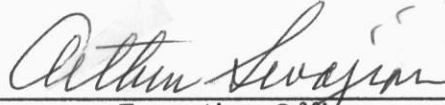
A. Discharge Specifications

1. Neither the treatment nor the discharge of wastewater shall create a pollution or a nuisance as defined in Division 7 of the California Water Code.
2. No wastewater other than domestic sewage shall be discharged at this location.
3. Wastewater shall be discharged subsurface and shall be retained underground with no surfacing.
4. Adequate measures shall be taken to assure that flood or surface drainage waters do not erode or otherwise render portions of the discharge facilities inoperable.
5. Sludge from septic tanks, and similar solid wastes, shall be disposed of in a manner which will not cause a threat to the public health. The location and disposal method for these wastes shall be reported to the Regional Board in advance, and these wastes shall not be disposed in surface drainage channels.

B. Provisions

1. Sufficient land area shall be reserved for possible future 100 percent replacement of the leach lines.
2. Upon request from this Board's Executive Officer, the discharger shall furnish technical and/or monitoring reports on the treatment and discharge of waste.
3. Prior to any modifications of this facility which would result in material change in quality or quantity of wastewater discharged, or any material change in location of discharge, the discharger shall report in writing to the Regional Board.
4. This Order supersedes Board Order No. 76-53.

I, Arthur Swajian, Executive Officer, do hereby certify the foregoing is a full, true and correct copy of an Order adopted by the California Regional Water Quality Control Board, Colorado River Basin Region, on August 7, 1985.



Executive Officer

**CALIFORNIA REGIONAL WATER QUALITY CONTROL BOARD
COLORADO RIVER BASIN REGION**

**MONITORING AND REPORTING PROGRAM NO. 85-63
FOR
MOUNT SAN JACINTO WINTER PARK AUTHORITY
West of Palm Springs - Riverside County**

Location: Portion of the NE $\frac{1}{4}$ of Section 23, T4 S, R3E, SBB&M

MONITORING

The discharger shall submit an annual status report on the following:

1. Estimate of maximum daily flow of sewage discharged to the sewerage systems.
2. List any proposed changes in the sewage disposal facilities during the upcoming year.

REPORTING

1. Annual reports are to be submitted by January 15th of each year to:

California Regional Water Quality Control Board
Colorado River Basin Region
73-271 Highway 111, Suite 21
Palm Desert, CA 92260

2. Report immediately any surfacing of wastewater or other failures of the system by telephone and by a follow-up letter.

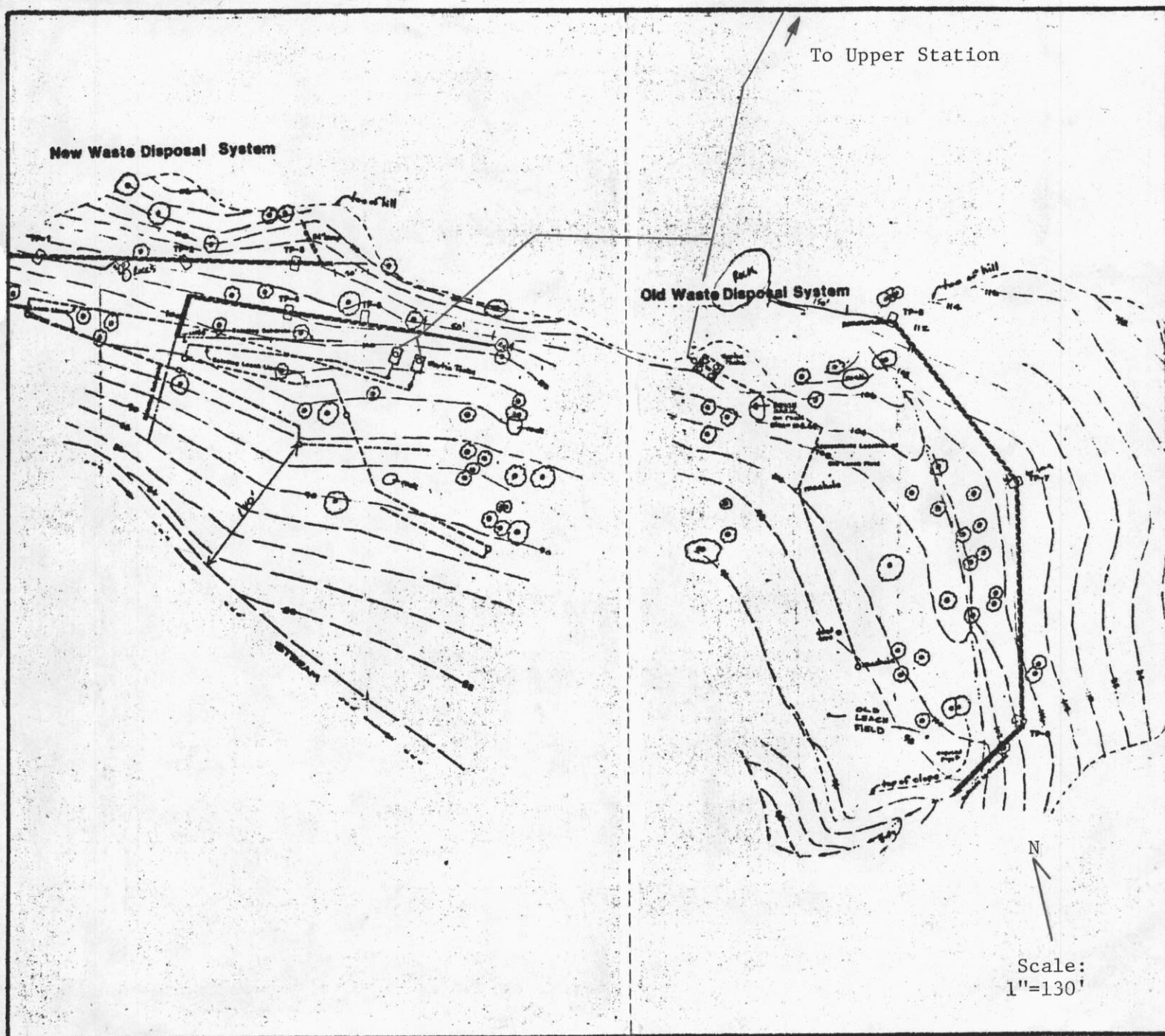
Ordered By: _____

Arthur Levajian
Executive Officer

July 29, 1987
Date

[illegible]

Order No. 85-63



SEWAGE DISPOSAL FACILITIES SKETCH

MOUNT SAN JACINTO WINTER PARK AUTHORITY
UPPER PALM SPRINGS AERIAL TRAMWAY STATION

West of Palm Springs - Riverside County