

**CALIFORNIA REGIONAL WATER QUALITY CONTROL BOARD  
COLORADO RIVER BASIN REGION**

ORDER NO. 85-87

**WASTE DISCHARGE REQUIREMENTS  
FOR  
BUTTERFIELD RANCH  
Mason Valley - San Diego County**

The California Regional Water Quality Control Board, Colorado River Basin Region, finds that:

1. Investment Group 15 Corporation (hereinafter also referred to as the discharger), P. O. Box 1104, Lakeside, California, 92040, verified, via the park manager, the below updated information on the discharge of waste on July 2, 1985.
2. The discharger discharges a maximum of 40,000 gallons-per-day of domestic sewage from a mobile home and recreational vehicle park having 79 mobile home spaces, 233 RV spaces, a restaurant and six (6) restrooms. The wastewater is discharged into septic tank/seepage pit disposal systems in the SW $\frac{1}{4}$  of Section 2, T14S, R5E, SBB&M.
3. The discharger is reserving areas of sufficient size for possible future 100 percent replacement of the seepage pits.
4. There are no domestic water wells within 200 feet of the discharge facilities described in Findings No. 2 and 3 (above).
5. The discharger states that wastewater from three swimming pools is periodically discharged onto landscape plantings.
6. The discharge from this facility has been subject to waste discharge requirements adopted in Board Order No. 79-74.
7. The Water Quality Control Plan for the Colorado River Basin Region of California was adopted by the Regional Board on November 14, 1984. The Basin Plan contains water quality objectives for the Anza-Borrego Hydrologic Unit.
8. The beneficial uses of the groundwater of the Anza-Borrego Hydrologic Unit are:
  - a. Municipal supply
  - b. Industrial supply
  - c. Agricultural supply

*rescinded  
by Bd ord # 97-121  
9/29/97 & replaced by  
97-50033*

9. The Board has notified the discharger and interested agencies and persons of its intent to update waste discharge requirements for the discharge.
10. The Board in a public meeting heard and considered all comments pertaining to the discharge.
11. These waste discharge requirements govern an existing facility, which the discharger is currently operating, and therefore is exempt from the provisions of the California Environmental Quality Act in accordance with Section 15301 of Title 14, Chapter 3 of the California Administrative Code.

IT IS HEREBY ORDERED, the discharger shall comply with the following:

A. Discharge Specifications

1. Neither the treatment nor the discharge of wastewater shall create a pollution or a nuisance as defined in Division 7 of the California Water Code.
2. No wastewater other than domestic sewage and swimming pool wastewater shall be discharged at this location.
3. Wastewater discharged subsurface shall be retained underground with no surfacing.
4. Adequate measures shall be taken to assure that flood or surface drainage waters do not erode or otherwise render portions of the discharge facilities inoperable.
5. Septic tank cleanings shall be discharged only by a duly authorized service.
6. Swimming pool wastewater shall not be discharged into a sewage disposal system.

B. Provisions

1. Sufficient land area shall be reserved for possible future 100 percent replacement of the seepage pits.
2. Upon request from this Board's Executive Officer, the discharger shall furnish technical and/or monitoring reports on the treatment and discharge of waste.
3. Prior to any modifications in this facility which would result in material change in the quality or quantity of wastewater discharged, or any material change in location of discharge, the discharger shall report in writing to the Regional Board.

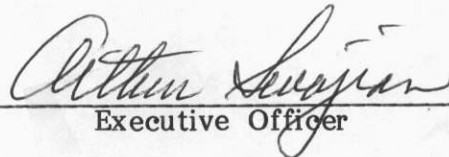
4. Prior to any change of ownership of this mobile home and recreational vehicle park, the discharger shall:

a. Specify as a condition of transfer that the area specified in Provision B.1 (above) remain servient to the park for the purpose of providing additional subsurface sewage disposal capacity, until such time as this park is connected to a municipal sewerage system.

b. Transmit a copy of this Order to the succeeding owner or operator, and file a copy of the transmittal letter with this Board.

5. This Order supersedes Board Order No. 79-74.

I, Arthur Swajian, Executive Officer, do hereby certify the foregoing is a full, true and correct copy of an Order adopted by the California Regional Water Quality Control Board, Colorado River Basin Region, on October 2, 1985.

  
Executive Officer

**CALIFORNIA REGIONAL WATER QUALITY CONTROL BOARD  
COLORADO RIVER BASIN REGION**

**MONITORING AND REPORTING PROGRAM NO. 85-87  
FOR  
BUTTERFIELD RANCH  
Mason Valley - San Diego County**

Location: Portion of the SW $\frac{1}{4}$  of Section 2, T14S, R5E, SBB&M

MONITORING

The discharger shall submit an annual status report on the following:

1. Number of spaces and restrooms presently connected to the sewerage system.
2. List any proposed changes in the sewage disposal facilities during the upcoming year.

REPORTING

1. Annual reports are to be submitted by January 15th of each year to:

California Regional Water Quality Control Board  
Colorado River Basin Region  
73-271 Highway 111, Suite 21  
Palm Desert, CA 92260

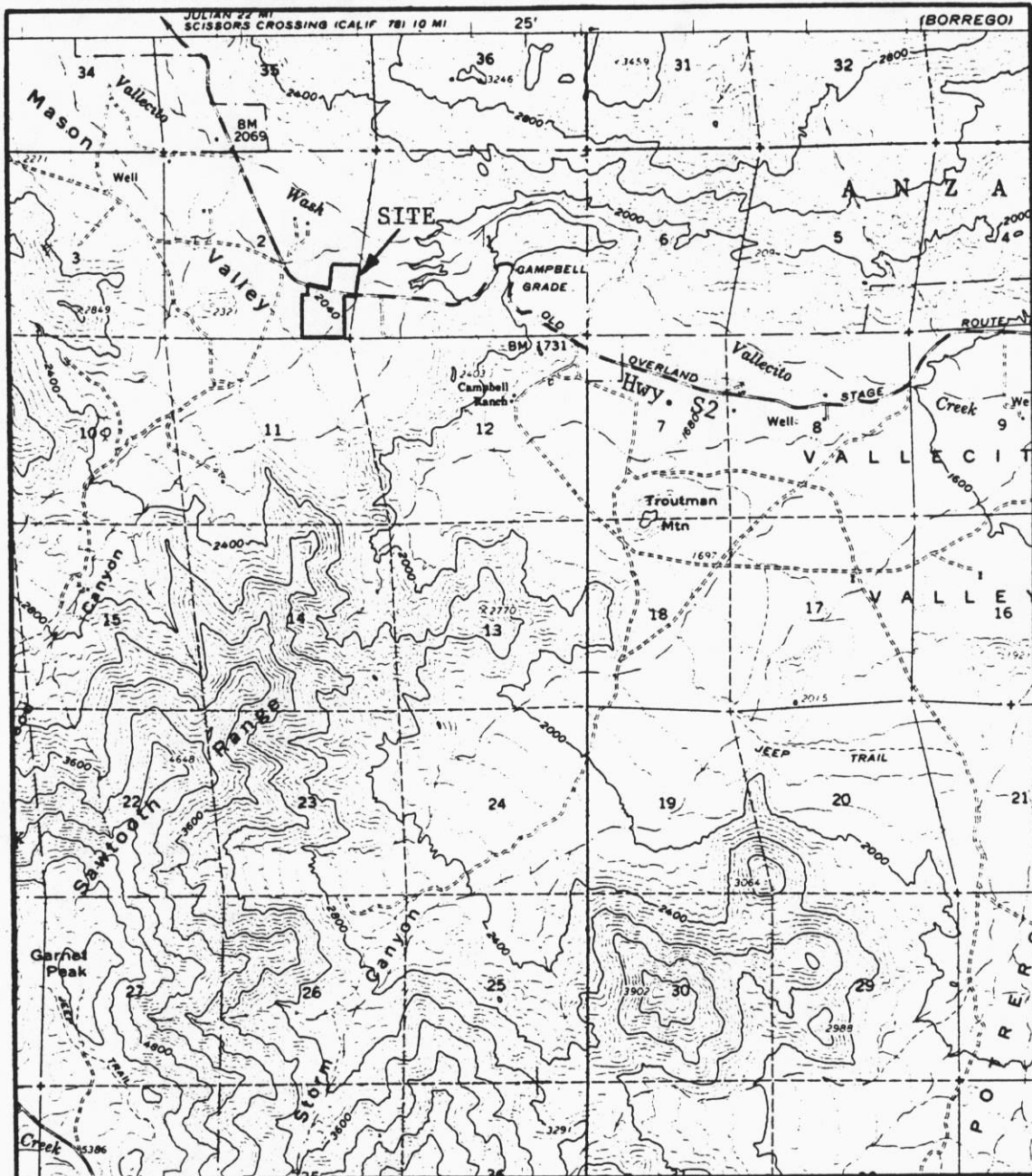
2. Report immediately any surfacing of wastewater or other failures of the system by telephone and follow-up by letter.

Ordered By: \_\_\_\_\_

*Arthur Swajian*  
Executive Officer

*July 29, 1987*  
Date

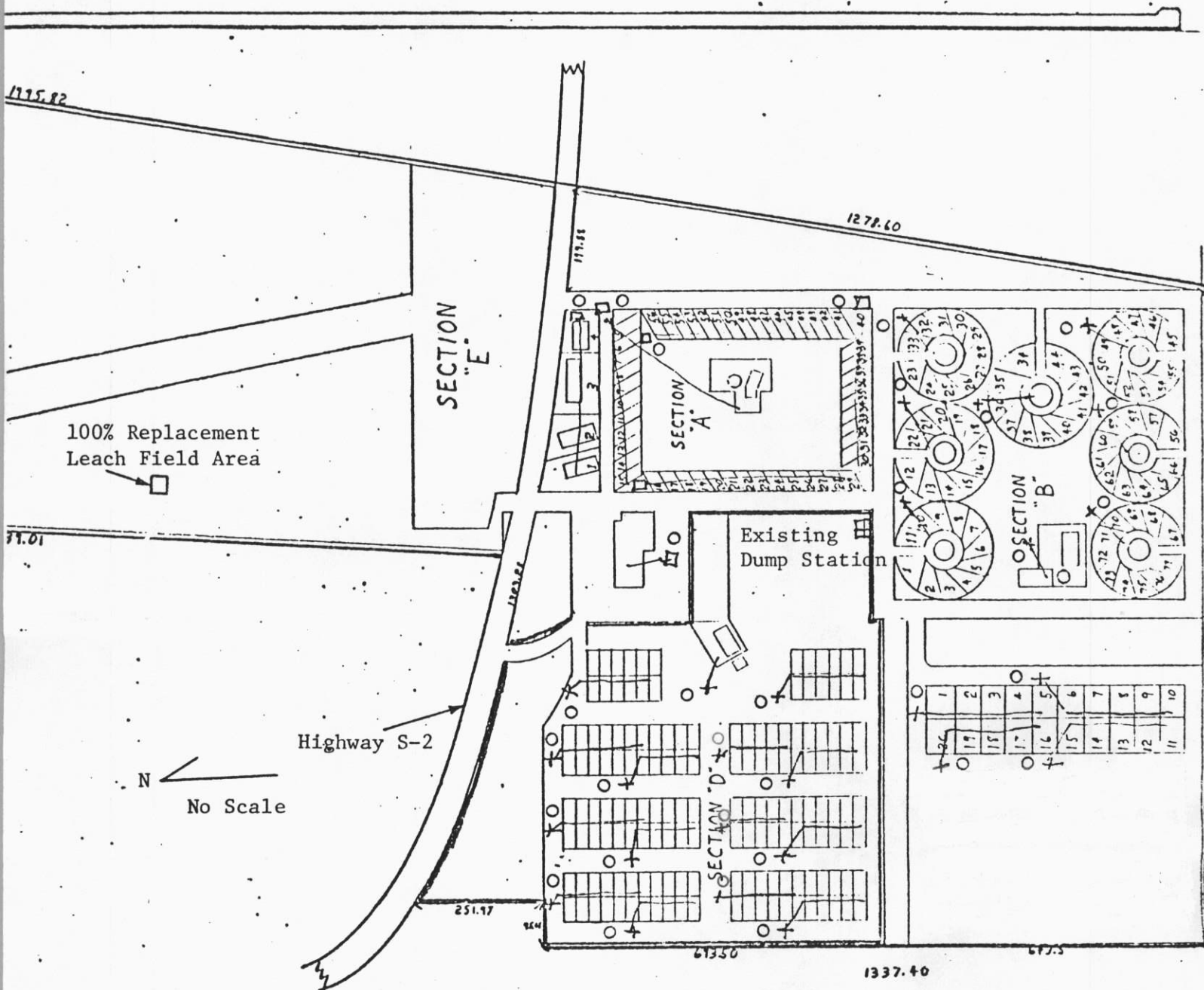
**CALIFORNIA REGIONAL WATER QUALITY CONTROL BOARD - 7**



**SITE MAP**

**BUTTERFIELD RANCH**  
 Mason Valley - San Diego County  
 Portion of the SE 1/4 of Section 2, T14S, R5E, SBB&M  
 USGS Mount Laguna 15 min. Topographic Map

Order No. 85-87



- + 1250 Gallon septic and seepage pit
- 1500 or 3000 Gallon septic and seepage pit
- 100% Replacement Seepage Pit Area

SEWAGE DISPOSAL FACILITIES SKETCH  
 BUTTERFIELD RANCH  
 Mason Valley - San Diego County