

**CALIFORNIA REGIONAL WATER QUALITY CONTROL BOARD
COLORADO RIVER BASIN REGION**

ORDER NO. 87-2

**WASTE DISCHARGE REQUIREMENTS
FOR
FIRST NATIONAL LAUNDROMAT OF JOSHUA TREE
Joshua Tree - San Bernardino County**

The California Regional Water Quality Control Board, Colorado River Basin Region, finds that:

1. Guy Page (hereinafter also referred to as the discharger), 61629 Twentynine Palms Highway, Joshua Tree, California, 92252, verified the below updated information on July 16, 1986.
2. The discharger is discharging from a laundromat a maximum discharge of 15,000 gallons-per-day of washwater into a large lint trap that flows into a septic tank and seven (7) seepage pits. The site is located in the NE $\frac{1}{4}$ of the NE $\frac{1}{4}$ of Section 35, T1N, R6E, SBB&M. Domestic sewage from a restroom is discharged into a separate septic tank/seepage pit system.
3. The discharger proposes to expand the disposal facilities by installing two (2) seepage pits approximately 60 feet deep. All of the pits have sufficient area reserved for 100 percent replacement capacity.
4. There are no domestic wells within 200 feet of the discharge facilities described in Findings No. 2 and 3 (above). However, there is a well about $\frac{1}{4}$ mile northeast of the site that has a ground water surface estimated at 424 feet below ground surface.
5. The discharge from this laundromat has been subject to waste discharge requirements adopted in Board Order No. 82-23.
6. The Water Quality Control Plan for the Colorado River Basin Region of California was adopted by the Regional Board on November 14, 1984.
7. The Basin Plan delineates the location of discharge to be in the Joshua Tree Hydrologic Unit, which has the following beneficial uses of ground water:
 - a. Municipal supply
 - b. Industrial supply
 - c. Agricultural supply
8. The Board has notified the discharger and interested agencies and persons of its intent to update waste discharge requirements for the discharge.

11/29/95
updated
w/B.S.#
95-104

9. The Board in a public meeting heard and considered all comments pertaining to the discharge.
10. These waste discharge requirements govern an existing facility, which the discharger is currently operating, and therefore is exempt from the provisions of the California Environmental Quality Act in accordance with Section 15301, Chapter 3, Title 14 of the California Administrative Code.

IT IS HEREBY ORDERED, the discharger shall comply with the following:

A. Discharge Specifications

1. Neither the treatment nor the discharge of wastewater shall create a pollution or a nuisance as defined in Division 7 of the California Water Code.
2. No wastewater other than domestic sewage and laundry wastewater shall be discharged at this location.
3. Domestic sewage shall not be discharged via the laundry disposal facilities.
4. Wastewater discharged subsurface shall be retained underground with no surfacing.
5. Adequate measures shall be taken to assure that flood or surface drainage waters do not erode or otherwise render portions of the discharge facilities inoperable.
6. Septic tank and lint trap cleanings shall be discharged only by a duly authorized service.

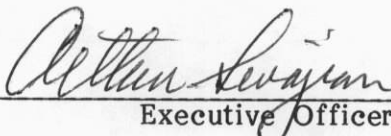
B. Provisions

1. Sufficient land area shall be reserved for possible future 100 percent replacement of the laundry seepage pits until such time as this laundromat is connected to a municipal sewerage system.
2. This Order includes the attached "Monitoring and Reporting Program No. "87-2", and future revisions thereto, as specified by the Executive Officer.
3. Prior to any modifications in this facility which would result in material change in the quality or quantity of wastewater discharged, or any material change in location of discharge, the discharger shall report in writing to the Regional Board.
4. Prior to any change of ownership of this laundromat, the discharger shall:

- a. Specify as a condition of transfer that the area specified in Provision B.1 (above) remain servient to the laundromat for the purpose of providing additional subsurface wastewater disposal capacity, until such time as this facility is connected to a municipal sewerage system.
- b. Notify the succeeding owner, in writing, of the existence of this Order, and forward a copy of said correspondence to the Regional Board.

5. This Order supersedes Board Order No. 82-23.

I, Arthur Swajian, Executive Officer, do hereby certify the foregoing is a full, true and correct copy of an Order adopted by the California Regional Water Quality Control Board, Colorado River Basin Region, on January 21, 1987.



Executive Officer

**CALIFORNIA REGIONAL WATER QUALITY CONTROL BOARD
COLORADO RIVER BASIN REGION**

**MONITORING AND REPORTING PROGRAM NO. 87-2
FOR
FIRST NATIONAL LAUNDROMAT OF JOSHUA TREE
Joshua Tree - San Bernardino County**

Location of Discharge: NE $\frac{1}{4}$, NE $\frac{1}{4}$ of Section 35, T1N, R6E, SBB&M

MONITORING

The discharger shall report to the Regional Board concerning the following:

1. Water meter reading to determine discharge flow - monthly reporting frequency.

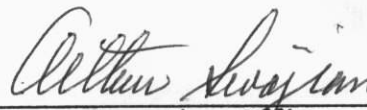
REPORTING

Monthly monitoring reports shall be submitted to the Regional Board on a quarterly basis - January 15, April 15, July 15 and October 15 of each year.

Submit monitoring reports to:

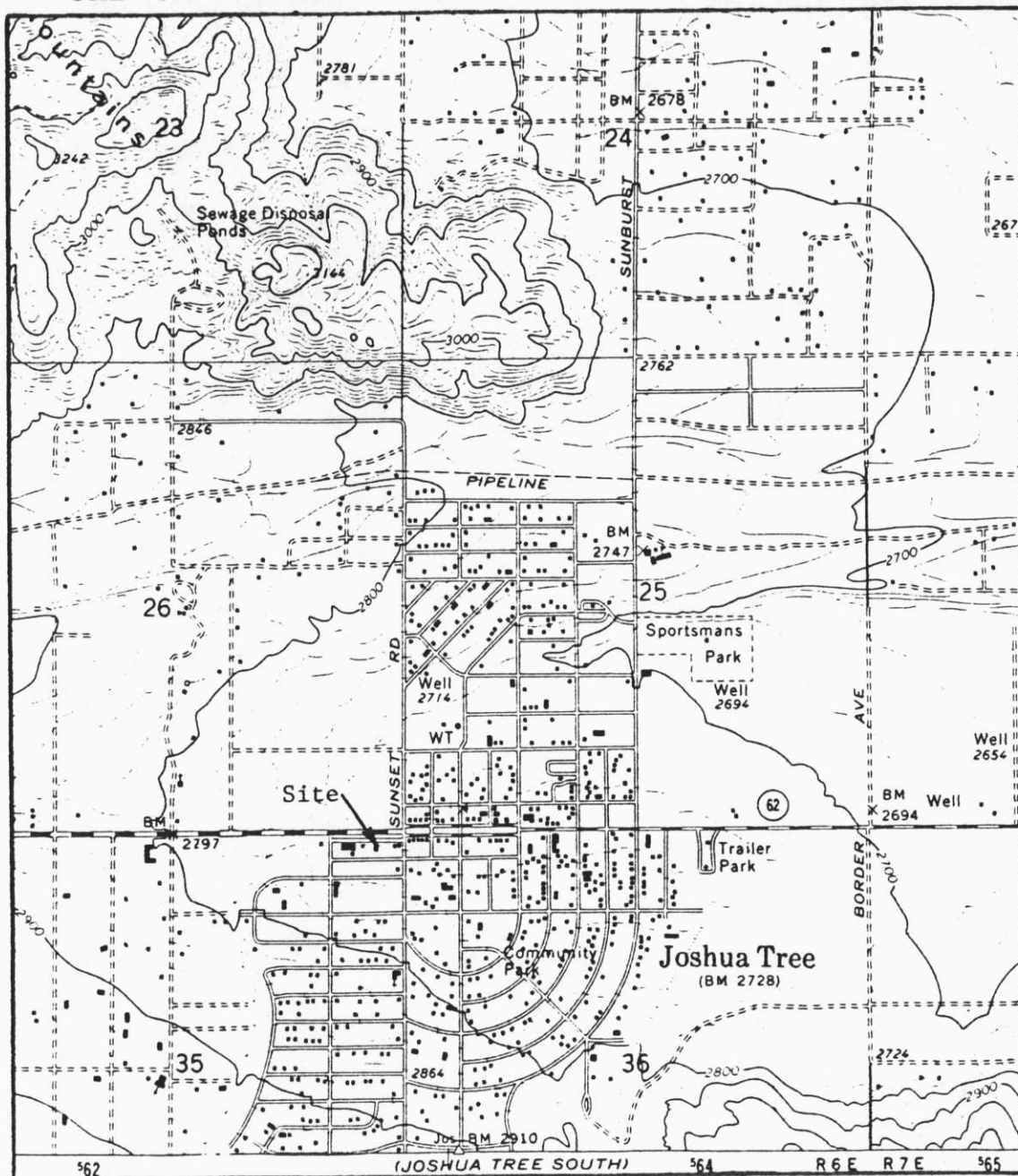
California Regional Water Quality Control Board
Colorado River Basin Region
73-271 Highway 111, Suite 21
Palm Desert, CA 92260

ORDERED BY:


Executive Officer

January 21, 1987
Date

CALIFORNIA REGIONAL WATER QUALITY CONTROL BOARD - 7



Scale:
1" = 2,000'

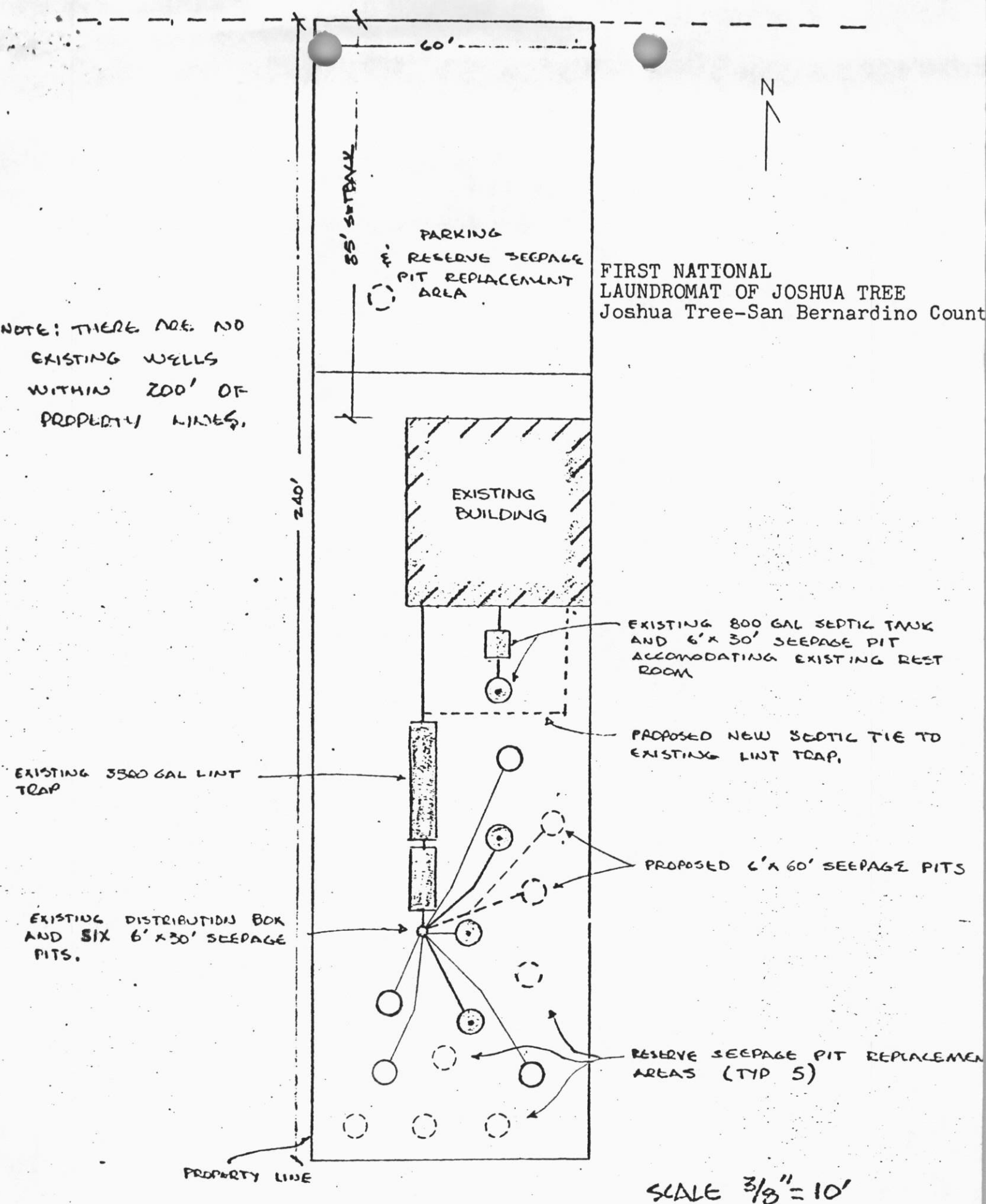
SITE MAP

FIRST NATIONAL LAUNDROMAT OF JOSHUA TREE
 Joshua Tree - San Bernardino County
 Portion of NE $\frac{1}{4}$, NE $\frac{1}{4}$ of Section 35, T1N, R6E, SBB&M
 USGS Joshua Tree North 7.5 min. Topographic Map

Order No. 87-2

NOTE: THERE ARE NO
EXISTING WELLS
WITHIN 200' OF
PROPERTY LINES.

FIRST NATIONAL
LAUNDROMAT OF JOSHUA TREE
Joshua Tree-San Bernardino County



PRELIMINARY WASTEWATER DISPOSAL FACILITIES SKETCH.