

**CALIFORNIA REGIONAL WATER QUALITY CONTROL BOARD
COLORADO RIVER BASIN REGION**

ORDER NO. 87-50

WASTE DISCHARGE REQUIREMENTS
FOR
CHAMPION MEAT PACKING COMPANY
South of El Centro - Imperial County

The California Regional Water Quality Control Board, Colorado River Basin Region, finds that:

1. Champion Meat Packing Company (hereinafter also referred to as the discharger), P.O. Box 320, El Centro, CA 92244, submitted a Report of Waste Discharge, dated March 25, 1987, to reactivate the wastewater disposal facilities of a meat packing plant.
2. The discharger proposes to discharge a maximum of 15,000 gallons-per-operating-day of meat packing plant washwater. The wastewater, which results from the cleanup of the plant floors and equipment, would be collected in pits where the fats are skimmed off, and then would be diverted into one of two oxidation basins. Any overflow from these basins would flow into a concrete sump, and then pumped to irrigate an adjacent pasture, which is grazed by non-milking animals. The discharge site is in the SE 1/4 of the NW 1/4 of Section 30, T16S, R14E, SBB&M.
3. The discharger states that solid wastes are hauled to an approved solid waste disposal site.
4. The discharge of wastes from this facility was subject to waste discharge requirements adopted in Board Order No. 78-70, which was rescinded on May 22, 1985 due to closure.
5. The Water Quality Control Plan for the Colorado River Basin Region of California was adopted by the Regional Board on November 14, 1984.
6. The beneficial uses of ground waters at the location of the discharge are:
 - a. Deep ground waters are saline and are being investigated for potential geothermal development.
 - b. Shallow ground waters are influenced by agricultural operations, are saline, and enter irrigation drains and flow to Salton Sea.
7. The Board has notified the discharger and interested agencies and persons of its intent to prescribe waste discharge requirements for the discharge.
8. The Board in a public meeting heard and considered all comments pertaining to the discharge.

*Rescinded
By Bd. Ord. # 92-080
11/18/92*

9. These waste discharge requirements govern an existing facility, which the discharger is currently operating, and therefore are exempt from the provisions of the California Environmental Quality Act in accordance with Section 15301, Chapter 3, Title 14 of the California Administrative Code.

IT IS HEREBY ORDERED, the discharger shall comply with the following:

A. Discharge Specifications

1. Neither the treatment nor the discharge of wastewater shall create a pollution or a nuisance as defined in Division 7 of the California Water Code.
2. The discharged wastewater including tailwater, shall not enter any rivers, canals, drainage channels, or drains (including subsurface drainage systems) which could provide flow or seepage to Salton Sea.
3. A minimum freeboard of at least two (2) feet shall be maintained in each wastewater containment basin.
4. Adequate measures shall be taken to assure that flood or surface drainage waters do not erode or otherwise render portions of the discharge facilities inoperable.
5. Adequate measures shall be taken to assure that unauthorized persons and animal pets are effectively excluded from contact with the discharge.
6. Wastewater shall be contained within the designated discharge areas.
7. Sludge or other materials removed from basins shall be discharged at a disposal site approved by the Regional Board to receive this waste.
8. The grazing of milking animals on any pasture irrigated with this wastewater is prohibited.
9. Reclaimed wastewater used for irrigation of pasture grazed by non-milking animals shall be in accordance with Section 60309, Chapter 4, Title 22 of the California Administrative Code, which requires the wastewater to have a level of quality no less than that of primary effluent, with settleable solids not to exceed 0.5 ml/l per hour as determined by an approved laboratory method.

B. Provisions

1. Prior to any modifications in this facility which could result in material change in the quality or quantity of wastewater discharged, or any material change in location of discharge, the discharger shall report in writing to the Regional Board.
2. The discharger shall comply with "Monitoring and Reporting Program No. 87-50", and future revisions thereto, as specified by the Executive Officer.

3. In the event of any change in control or ownership of land or waste disposal facilities owned or controlled by the discharger, the discharger shall:

a. Notify the Board of such change; and

b. Transmit a copy of this Order to the succeeding owner or operator, and file a copy of the transmittal letter with this Board.

4. This Order shall not become effective until the discharger receives a Conditional Use Permit as required by the Imperial County Zoning Ordinance.

I, Arthur Swajian, Executive Officer, do hereby certify the foregoing is a full, true, and correct copy of an Order adopted by the California Regional Water Quality Control Board, Colorado River Basin Region, on May 20, 1987.


Executive Officer

CALIFORNIA REGIONAL WATER QUALITY CONTROL BOARD
COLORADO RIVER BASIN REGION

MONITORING AND REPORTING PROGRAM NO. 87-50 (Revision No. 1)
FOR

CHAMPION MEAT PACKING COMPANY
South of El Centro - Imperial County

Location of Discharge: SE $\frac{1}{4}$, NW $\frac{1}{4}$ of Section 30, T16S, R14E, SBB&M

EFFLUENT MONITORING

Wastewater contained in the oxidation basins shall be monitored for the following:

<u>Constituent</u>	<u>Unit</u>	<u>Type of Sample</u>	<u>Sampling Frequency</u>
Flow (Total Plant Washwater)	Gallons/day	Flow	Monthly
Basin Freeboard Depth	Feet	Measurement Below Berm	Monthly

WASTEWATER RECLAMATION

Any wastewater used to irrigate pasture land shall be monitored for settleable solids (in ml/l) prior to each discharge and reported monthly. A statement that there has been no discharge onto pasture land in lieu of discharge monitoring shall be noted on the monthly report.

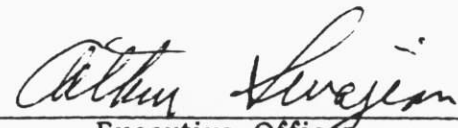
REPORTING

Monthly monitoring reports shall be submitted to the Regional Board on a quarterly basis by January 15, April 15, July 15, and October 15 of each year.

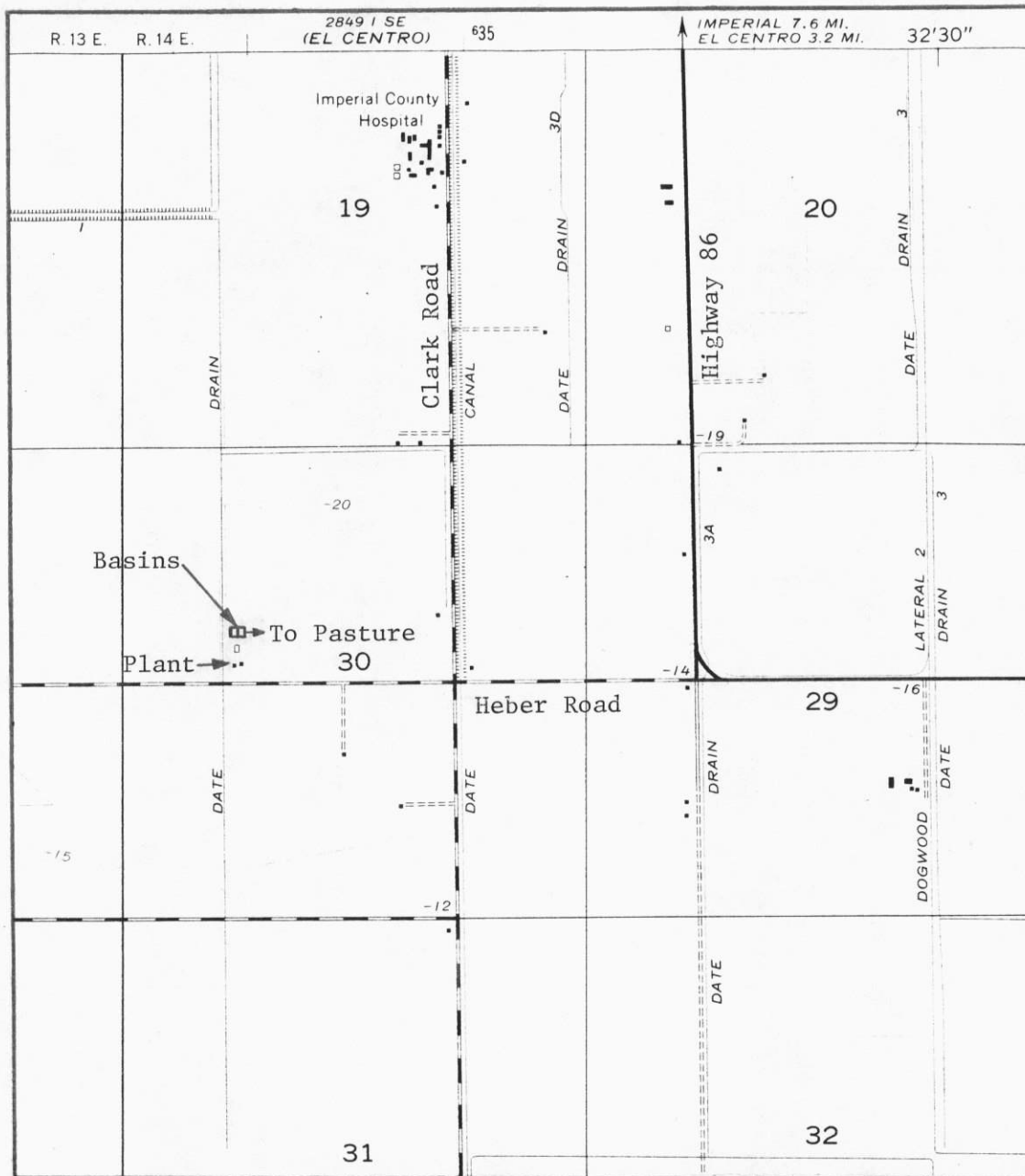
Submit monitoring reports to:

California Regional Water Quality Control Board
Colorado River Basin Region
73-271 Highway 111, Suite 21
Palm Desert, CA 92260

ORDERED BY:


Executive Officer
3/4/88
Date

CALIFORNIA REGIONAL WATER QUALITY CONTROL BOARD - 7



Scale:
1" = 2000'

SITE MAP

CHAMPION MEAT PACKING COMPANY
South of El Centro - Imperial County
Portion of SE 1/4, NW 1/4 of Section 30, T16S, R14E, SBB&M
USGS Heber 7.5 min. Topographic Map

Order No. 87-50

10-6