

**CALIFORNIA REGIONAL WATER QUALITY CONTROL BOARD  
COLORADO RIVER BASIN REGION**

ORDER NO. 87-55

**WASTE DISCHARGE REQUIREMENTS  
FOR  
CALIFORNIA DEPARTMENT OF CORRECTIONS  
WASTEWATER TREATMENT FACILITY  
Wiley's Well - Riverside County**

The California Regional Water Quality Control Board, Colorado River Basin Region, finds that:

1. California Department of Corrections (hereinafter also referred to as the discharger), P.O. Box 942883, Sacramento, California, 94283-001, submitted a Report of Waste Discharge, dated March 9, 1987, to discharge treated wastewater from a treatment facility, at a proposed Riverside County prison to be located approximately three miles south of the Wiley's Well rest stop interchange on Interstate 10, west of Blythe.
2. The prison is projected to hold 2,000 inmates and will employ a staff of about 750 including guards and administrative personnel. Sewage from the total facility would be collected and delivered to the onsite wastewater treatment and disposal facility located in the NE $\frac{1}{4}$  of Section 17, T7S, R19E, SBB&M. The fenced site would total approximately 50 acres, of which approximately 50% would be used for the treatment and discharge facility. The remaining 50% would be left in its natural state to serve as a buffer zone and be reserved for potential future expansion. The prisoners would do only assembly work at the prison and this assembly work would contribute no waste streams to the wastewater treatment facility.
3. The wastewater facility would be designed to handle an average daily flow of 0.7 million gallons-per-day, and a peak flow rate of 2.1 million gallons-per-day. The plant would consist of five main elements: (1) screening and pumping station, (2) aerated stabilization basins (3) infiltration basins, (4) control-building, and (5) site work and service utilities.
4. All solid waste would be discharged at a Board approved waste management unit.
5. The Water Quality Control Plan for the Colorado River Basin Region of California was adopted by the Regional Board on November 14, 1984.

*Superseded by*  
03-016  
3/31/93

6. The Basin Plan delineates the location of discharge to be in the Palo Verde Hydrologic Subunit, which has the following beneficial uses of ground water:
  - a. Municipal supply
  - b. Industrial supply
  - c. Agricultural supply
7. The depth to ground water below the infiltration basins is 270 feet. The total dissolved solids of the ground water is 710 mg/l. Ground water near the site is presently being utilized for agriculture only.
8. The Board has notified the discharger and interested agencies and persons of its intent to issue waste discharge requirements for the discharge.
9. The Board in a public meeting heard and considered all comments pertaining to the discharge.
10. A waiver of the provisions of the California Environmental Quality Act is provided in Chapter 933, Statutes of 1985 (Senate Bill 253). SB 253 was an urgency measure providing that, "...immediate expansion of the prison system by the the swiftest possible means is necessary to relieve the system from current and anticipated overcrowding and to maintain the public safety and security." The below waste discharge requirements will mitigate any significant effects to water quality.

IT IS HEREBY ORDERED, the discharger shall comply with the following:

A. Discharge Specifications

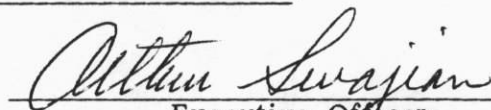
1. Neither the treatment nor the discharge of wastewater shall create a pollution or a nuisance as defined in Division 7 of the California Water Code.
2. No wastewater other than domestic sewage shall be discharged at this location.
3. A minimum depth of freeboard of at least two (2) feet shall be maintained in the stabilization and infiltration basins.
4. Treated or untreated sludge, or similar solid waste materials, shall be disposed only at locations approved by the Regional Board.
5. Adequate measures shall be taken to assure that unauthorized persons are effectively excluded from contact with the discharge.
6. Adequate measures shall be taken to assure that flood or surface drainage waters do not erode or otherwise render portions of the discharge facilities inoperable.
7. There shall be no surface flow of sewage away from the designated disposal areas.

8. Adequate protective facilities shall be provided to insure that blow sand will not accumulate in the treatment and disposal facilities.
9. Treatment and disposal by ponding shall be conducted in such manner that there shall be no stranded or exposed sewage solids.
10. Facilities shall be available to handle wastewater in the event of commercial power failure.
11. Treatment and discharge of wastewater shall be conducted by technical procedures which will maintain a surface aerobic environment.
12. Infiltration facilities shall be maintained and operated so as to maximize infiltration and minimize the increase in salinity of the infiltrating wastewater.
13. Increase of total dissolved solids in the treated wastewater over that contained in the water supply shall not exceed an increment of 300 mg/l.

B. Provisions

1. Prior to any modifications in this facility which could result in material change in the quality or quantity of wastewater discharged, or any material change in location of discharge, the discharger shall report in writing to the Regional Board.
2. The discharger shall comply with the attached "Monitoring and Reporting Program No. 87-55", and future revisions thereto, as specified by the Executive Officer.
3. In the event of any change in control or ownership of land or waste disposal facilities described herein, the discharger shall:
  - a. Notify this Board of such change; and
  - b. Transmit a copy of this Order to the succeeding owner or operator, and file a copy of the transmittal letter with this Board.

I, Arthur Swajian, Executive Officer, do hereby certify the foregoing is a full, true and correct copy of an Order adopted by the California Regional Water Quality Control Board, Colorado River Basin Region, on September 23, 1987.

  
Executive Officer

**CALIFORNIA REGIONAL WATER QUALITY CONTROL BOARD  
COLORADO RIVER BASIN REGION**

MONITORING AND REPORTING PROGRAM NO. 87-55

FOR

CALIFORNIA DEPARTMENT OF CORRECTIONS

WASTEWATER TREATMENT FACILITY

Wiley's Well - Riverside County

Location of discharge: NE¼ Section 17, T7S, R19E, SBB&M

The Department of Corrections shall report monitoring data to the Regional Board in accordance with the following schedule:

EFFLUENT MONITORING

<u>Constituent</u>	<u>Unit</u>	<u>Type of Sample</u>	<u>Sampling Frequency</u>
Wastewater discharged to infiltration basins:			
Total Dissolved Solids	mg/l	Grab	Quarterly
Fluoride	mg/l	Grab	Quarterly
pH	pH units	Grab	Quarterly
Volume	MGD	Flow	Daily <sup>1</sup>

WATER SUPPLY TO THE PRISON

The water supply shall be monitored for the following constituent. The sample analyzed shall be a weighted average of all sources.

Total Dissolved Solids	mg/l	Grab	Annually
------------------------	------	------	----------

Monitoring reports shall be submitted to the Regional Board as follows:

Annual - by January 15 of the following year.

Quarterly - by January 15, April 15, July 15, and October 15 of each year.

Daily - by the 15th day of the following month.

<sup>1</sup> For each day with average monthly flow calculated

The discharger shall implement the above monitoring program within 30 days of commencement of discharge.

Forward monitoring reports to:

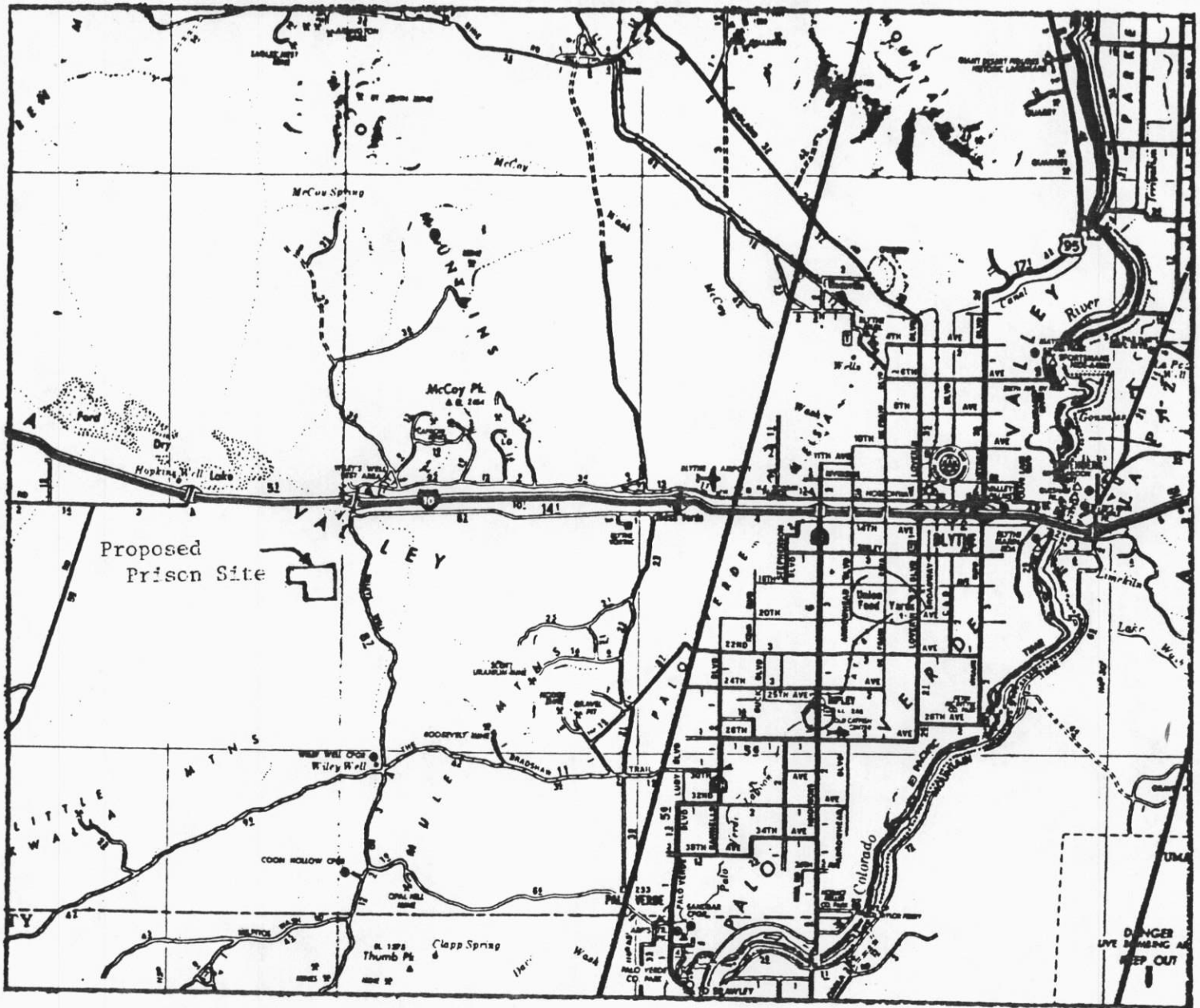
California Regional Water Quality Control Board  
Colorado River Basin Region  
73-271 Highway 111, Suite 21  
Palm Desert, CA 92260

ORDERED BY:

Arthur Levajian  
Executive Officer

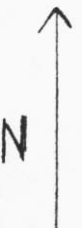
September 23, 1987  
Date

CALIFORNIA REGIONAL WATER QUALITY CONTROL BOARD -7

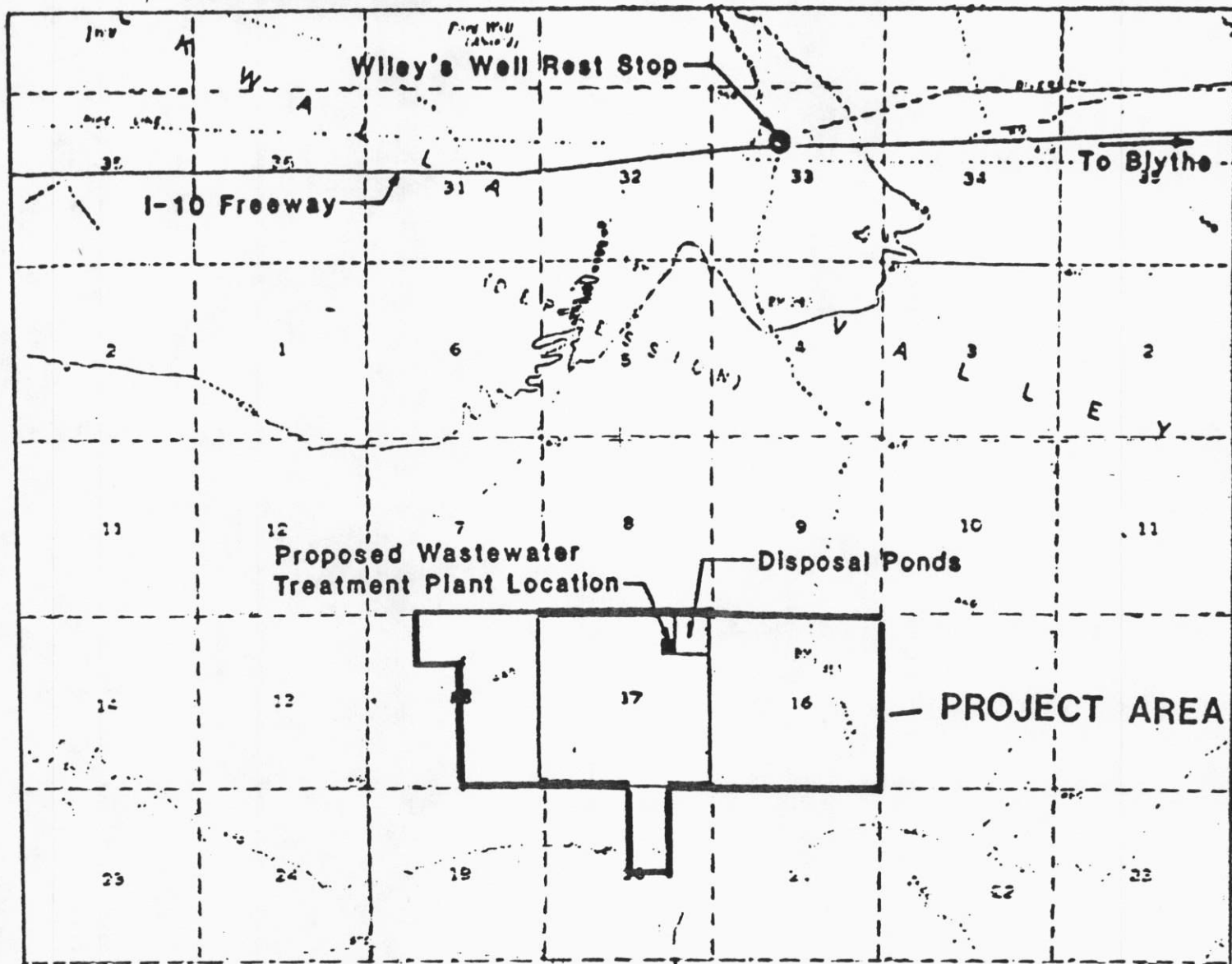


SITE MAP 1  
 CALIFORNIA DEPARTMENT OF CORRECTIONS WASTEWATER  
 TREATMENT FACILITY  
 Wiley's Well - Riverside County  
 NE¼ Section 17, T7S, R19E, SBB&M

Order No. 87-55



CALIFORNIA REGIONAL WATER QUALITY CONTROL BOARD -7



SITE MAP 2  
CALIFORNIA DEPARTMENT OF CORRECTIONS WASTEWATER  
TREATMENT FACILITY

Wiley's Well - Riverside County  
NE¼ Section 17, T7S, R19E, SBB&M

Order No. 87-55

