

CALIFORNIA REGIONAL WATER QUALITY CONTROL BOARD
COLORADO RIVER BASIN REGION

ORDER NO. 88-139

WASTE DISCHARGE REQUIREMENTS
FOR
UNITED STATES MARINE CORPS AIR GROUND COMBAT CENTER
CLASS III WASTE MANAGEMENT FACILITY
Twentynine Palms - San Bernardino County

The California Regional Water Quality Control Board, Colorado River Basin Region, finds that:

1. The United States Marine Corps Air Ground Combat Center (hereinafter also referred to as the discharger), Twentynine Palms, California 92278, submitted a Report of Waste Discharge dated June 27, 1988 to update waste discharge requirements for an existing solid waste management facility (WMF) located in the S 1/2 of Section 8 and NE 1/4 of Section 17, T2N, R9E, SBB&M. This property is owned by the United States Navy.
2. The WMF has been subject to waste discharge requirements under Board Order No. 84-67. The waste discharge requirements are being updated to comply with Section 13263 of the California Water Code, and to incorporate the applicable provisions of Subchapter 15, Chapter 3, Title 23 of the California Code of Regulations.
3. The discharger submitted a Solid Waste Assessment Testing (SWAT) Report dated May 1988 as required by Section 13273 of the California Water Code. The SWAT report contains most of the information required in said Subchapter 15. The remainder of the information required will be submitted in accordance with a time schedule included in the provisions of this Order.
4. The facility will be reclassified, in accordance with the criteria set forth in said Subchapter 15 for Class III landfills, and a determination will be made as to the need to construct a liner with a leachate collection and removal system in the new landfill areas within the WMF based on technical data contained in the SWAT report and other relevant information.
5. The active landfill presently receives 240 cubic yards per day of non-hazardous solid waste which includes domestic waste, construction/demolition waste and military waste. The facility was opened in 1972 and has received only wastes generated at the base and is not open to the public. The site is 48 acres. The active area is approximately 1,500 feet by 500 feet.

*Superseded
by Bd. Ord # 92-013
1/22/92*

6. The total volume of material disposed at this landfill is 900,000 cubic yards. It has an estimated remaining life of 5 years.
7. Land within 1,000 feet of this site is natural desert.
8. The discharger proposes to monitor the ground water and unsaturated zone near the leading edge of the landfill by installation of a monitoring well and three lysimeters. The ground water monitoring well will be positioned to monitor the ground water near the center of the buried bedrock valley below the landfill. Three 4-inch lysimeters will be constructed to a depth of 100 feet at 15 degrees to the vertical to detect leachates that may escape from the landfill. The location of the proposed monitoring wells and lysimeters are shown in Attachment C. The monitoring system complies with the requirements of Article 5 of said Subchapter 15.
9. It will be necessary to determine background water quality of the ground water in the proximate area of the facility, from monitoring wells constructed under the SWAT program, after which the Regional Board may revise this Order to set numerical limitations on water quality constituents for protection of the ground water from the effects of the WMF. The revised Order will also include the detection and verification monitoring programs and the corrective action program required in Section 2551 of said Subchapter 15.
10. Attachments "A", "B", and "C", which show the location and description of the site, are part of this Order.
11. The Water Quality Control Plan for the Colorado River Basin Region of California was adopted by the Regional Board on November 14, 1984.
12. The Basin Plan delineates the location of discharge to be in the Dale Hydrologic Subunit which has the following beneficial uses of ground water:
 - a. Municipal supply
 - b. Industrial supply
 - c. Agricultural supply
13. The Board has notified the discharger and interested agencies and persons of its intent to update waste discharge requirements for the discharge.
14. The Board in a public meeting heard and considered all comments pertaining to the existing discharge.
15. These waste discharge requirements govern existing facilities, which the discharger is currently operating, and therefore are exempt from the provisions of the California Environmental Quality Act in accordance with Section 15301 of Chapter 3, Title 14, of the California Code of Regulations.

IT IS HEREBY ORDERED THAT, the discharger comply with the following:

A. Discharge Specifications

1. The treatment or disposal of waste shall not cause pollution or nuisance as defined in Section 13050 (l) and 13050 (m) of the California Water Code.
2. Wastes shall be confined to the waste management facility as shown and described on the attached site maps.
3. Waste material shall not be discharged on any surface which is less than five feet above the highest anticipated ground water level.
4. The discharge shall not cause degradation of any water supply.
5. The waste management units shall be designed, constructed, operated and maintained to prevent inundation or washout due to a 100-year 24-hour storm.
6. Surface drainage from tributary areas, and internal site drainage from surface or subsurface sources, shall not contact or percolate through the wastes discharged at this site.
7. The exterior surfaces of the disposal area including the intermediate and final landfill covers shall be graded and maintained to promote lateral runoff of precipitation and to prevent ponding.
8. The discharger shall remove and relocate any wastes which are discharged at this site in violation of these requirements

B. Prohibitions

1. The discharge or deposit of hazardous waste (as defined in said Subchapter 15) at this site is prohibited.
2. The discharge or deposit of designated waste (as defined in said Subchapter 15) at this site is prohibited unless otherwise approved by the Executive Officer.
3. The discharge of liquid or semi-solid waste (i.e., waste containing less than 50 percent solids) to the landfill units is prohibited unless otherwise approved by the Executive Officer.
4. The discharge of wastes to surface waters, surface water drainage courses or to ground waters is prohibited.

C. Provisions

1. The discharger shall maintain a copy of this Order at the site and make it available at all times to site operating personnel.

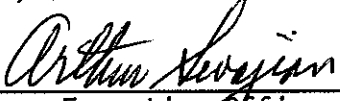
2. The discharger shall notify the Regional Board of any material change or proposed change in the character, location, or volume of the wastes discharged and of any proposed expansion plans. This notification shall be accompanied by an amended report of waste discharge and any additional information as may be required by the Regional Board's Executive Officer.
3. The discharger shall comply with "Monitoring and Reporting Program No. 88-139", and future revisions thereto, as specified by the Regional Board's Executive Officer.
4. The discharger shall maintain legible records on the volume and type of wastes discharged at the site. These records shall be available for review by representatives of the Board at any time during normal business hours. At the beginning of the post-closure maintenance period, copies of these records shall be sent to the Regional Board.
5. The discharger shall maintain visible monuments identifying the boundary of the entire waste management facility.
6. By May 1, 1989, the discharger shall submit to the Regional Board and to the State Department of Health Services for review and approval, a report describing a periodic load-checking program to be implemented by the discharger to ensure that wastes prohibited by this Order are not discharged to the disposal site.
7. One year prior to the anticipated closure of the facility or any unit (portion) thereof, the discharger shall submit to the Regional Board, for review and approval by the Executive Officer, a closure and post-closure maintenance plan in accordance with Section 2597 of said Subchapter 15.
8. By May 1, 1989, the discharger shall submit to the Regional Board a plan and time schedule for compliance with the requirements of the following sections of said Subchapter 15:
 - a. Section 2551: Required Programs
 - b. Section 2595: Waste Management Unit Characteristics
 - c. Section 2596: Design Report and Operations Plan
9. The discharger shall immediately notify the Regional Board of any flooding, slope failure or other change in site conditions which could impair the integrity of waste containment facilities or of precipitation and drainage control structures.
10. Annually, prior to the 1st day of November, any necessary erosion control measures shall be implemented and any necessary construction, maintenance, or repairs of precipitation and drainage control facilities shall be completed to prevent erosion or flooding of the

site; and the report hereon shall be submitted to the Regional Board by November 15 of each year.

11. Water used for site maintenance shall be limited to amounts necessary for dust control.
12. In the event of any change in ownership of the disposal site, the discharger shall notify the succeeding owner or operator in writing of the existence of this Order. A copy of that notification shall be sent to the Regional Board.
13. The discharger shall comply with all applicable provisions of Subchapter 15 that are not specifically referred to in this Order.

IT IS FURTHER ORDERED THAT, Board Order No. 84-67 be superseded by this Order.

I, Arthur Swajian, Executive Officer, do hereby certify the foregoing is a full, true and correct copy of an Order adopted by the California Regional Water Quality Control Board, Colorado River Basin Region, on November 30, 1988.



Executive Officer

CALIFORNIA REGIONAL WATER QUALITY CONTROL BOARD
COLORADO RIVER BASIN REGION

MONITORING AND REPORTING PROGRAM NO. 88-139
FOR
UNITED STATES MARINE CORPS AIR GROUND COMBAT CENTER
CLASS III WASTE MANAGEMENT FACILITY
Twentynine Palms - San Bernardino County

Location of Discharge: S 1/2, Section 8 and NE 1/4, Section 17, T2N, R9E, SBBB&M

MONITORING

The discharger shall monitor all wastes discharged to the disposal site and report to the Regional Board the following:

<u>Item</u>	<u>Reporting Unit</u>	<u>Frequency</u>
1. Refuse discharged	Cubic Yards	Quarterly
2. Any wastes discharged other than those allowed in the requirements	Type, Volume and Approximate Location	Immediately upon becoming aware that waste has been discharged
3. Landfill capacity remaining	Percent	Annually

REPORTING

1. Quarterly monitoring reports shall be submitted to the Regional Board by January 15, April 15, July 15, and October 15 of each year and an annual report by January 15 of each year, except that the annual report required under Provision No. 10 of Board Order No. 88-139 shall be submitted by November 15 of each year.
2. Monitoring reports shall be certified under penalty of perjury to be true and correct and shall contain the required information at the frequency specified in the monitoring program.
3. The annual report required per Provision No. 10 of Board Order No. 88-139 shall be submitted by November 15 of each year.
4. Submit monitoring reports to:

California Regional Water Quality Control Board
Colorado River Basin Region
73-271 Highway 111, Suite 21
Palm Desert, CA 92260

ORDERED BY:


Executive Officer

November 30, 1988
Date

*Deposited
May 6 88-139
7/27/88*

CALIFORNIA REGIONAL WATER QUALITY CONTROL BOARD
COLORADO RIVER BASIN REGION

MONITORING AND REPORTING PROGRAM NO. 88-139 (REVISION 1)

FOR
UNITED STATES MARINE CORPS AIR GROUND COMBAT CENTER
CLASS III WASTE MANAGEMENT FACILITY
Twentynine Palms - San Bernardino County

Location of Discharge: S $\frac{1}{2}$, Section 8 and NE $\frac{1}{4}$, Section 17, T2N, R9E, SBB&M

MONITORING

The discharger shall monitor all wastes discharged to the disposal site and report to the Regional Board the following:

1. Waste Monitoring

<u>Item</u>	<u>Unit</u>	<u>Reporting Frequency</u>
a. Quantity Discharged	Cubic Yards	Quarterly
b. Type of Materials Discharged	-	Quarterly
c. Remaining Capacity of Waste Management Unit	Cubic Yards	Annually
d. Any Discharge of Wastes Other Than Those Allowed in the Specifications	Type, Volume, and Location	Immediately upon becoming aware that the waste has been discharged together with action for immediate correction and prevention of recurrence.

2. Ground Water Monitoring

Ground water monitoring wells (MW15-1, MW15-2, MW15-3, MW15-4, MW15-5, MW16-1, MW16-2, MW16-2, MW16-3, and MW16-4) shall be sampled quarterly during March, June, September, and December, except as noted. Ground water samples shall be analyzed for the following:

<u>Parameter</u>	<u>Units</u>	<u>Type of Sample</u>	<u>Reporting Frequency</u>
a. Total Dissolved Solids	mg/l	Grab	Quarterly
b. Sulfate	mg/l	Grab	Quarterly
c. Chloride	mg/l	Grab	Quarterly
d. Nitrate	mg/l	Grab	Quarterly

<u>Parameter</u>	<u>Units</u>	<u>Type of Sample</u>	<u>Reporting Frequency</u>
e. Total Organic Carbon	mg/l	Grab	Quarterly
f. Purgeable Halocarbons (EPA Method 601)	mg/l	Grab	Annually ¹
g. Purgeable Aromatics (EPA Method 602)	mg/l	Grab	Annually ¹
h. pH	Number	Grab	Quarterly
i. Ground Water Elevations (USGS Datum)	Feet	Measurement	Quarterly

3. Unsaturated (Vadose) Zone Monitoring

The vadose zone monitoring lysimeters at the landfill shall be monitored quarterly for the presence of liquids and sampled where feasible. Samples shall be analyzed for the following:

<u>Parameter</u>	<u>Units</u>	<u>Frequency</u>
a. Total Dissolved Solids	mg/l	Quarterly
b. Total Organic Carbon	mg/l	Quarterly
c. Purgeable Halocarbons (EPA Method 601)	mg/l	Quarterly
d. Purgeable Aromatics (EPA Method 602)	mg/l	Quarterly
e. pH	Number	Quarterly

The collection, preservation and holding times of all samples shall be in accordance with EPA approved procedures. All analyses shall be conducted by a laboratory certified by the State Department of Health Services to conduct the required analyses.

REPORTING

1. Annual monitoring reports shall be submitted to the Regional Board by the 15th day of January of each year. Quarterly monitoring reports shall be submitted to the Regional Board by January 15, April 15, July 15, and October 15 of each year.

Submit monitoring reports to:

California Regional Water Quality Control Board
Colorado River Basin Region
73-271 Highway 111, Suite 21
Palm Desert, CA 92260

¹ Samples shall be collected in September if water is present in the monitoring wells. If water is not present, samples shall be collected at the first detection of water thereafter.

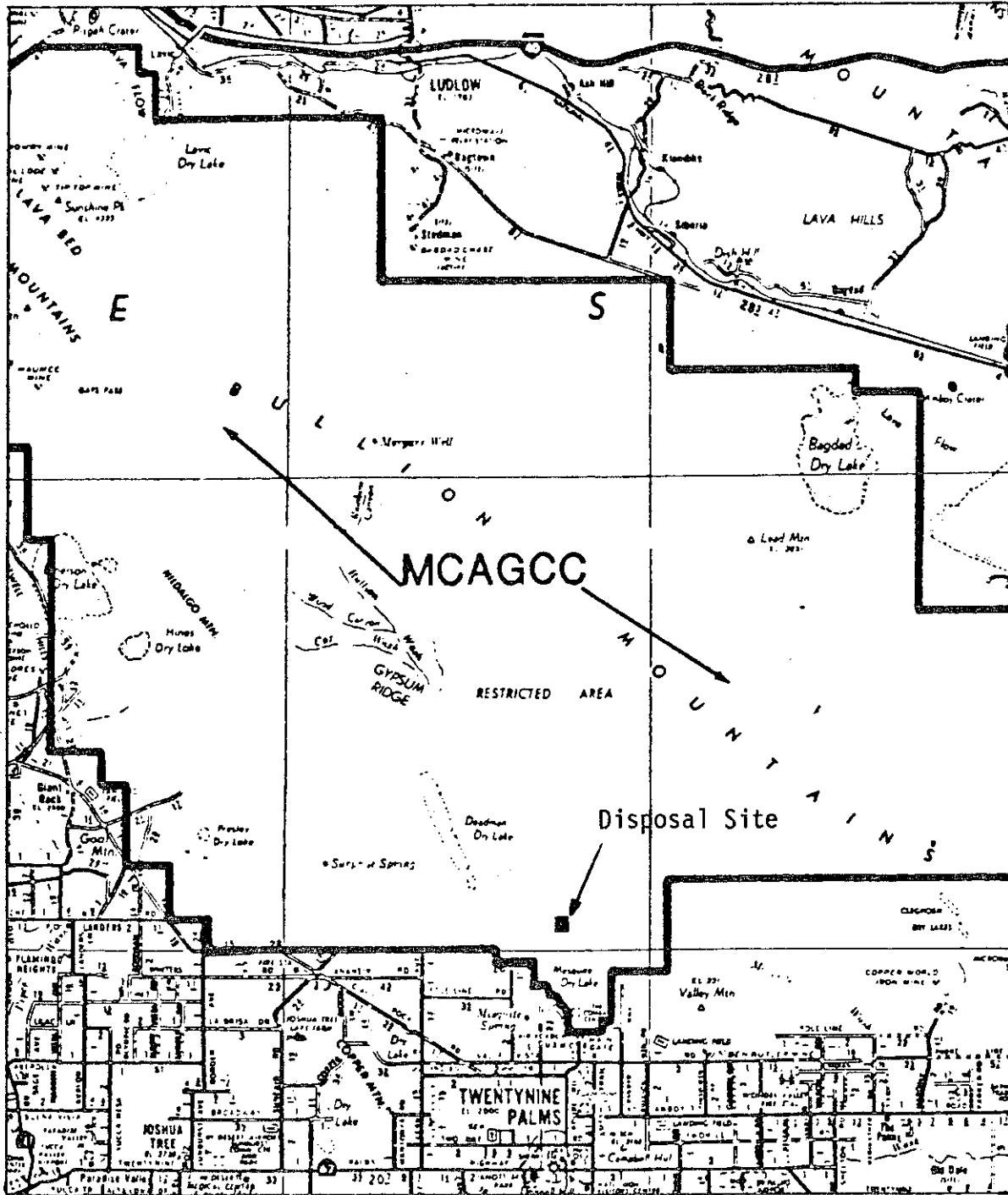
2. Monitoring reports shall be certified to be true and correct and shall contain the required information at the frequency designated in this monitoring program.
3. Monitoring data shall be arranged in tabular form so that the date, the constituents, the concentrations and the units are readily discernible.

ORDERED BY:

Paul Gruenberg
Executive Officer

7-25-89
Date

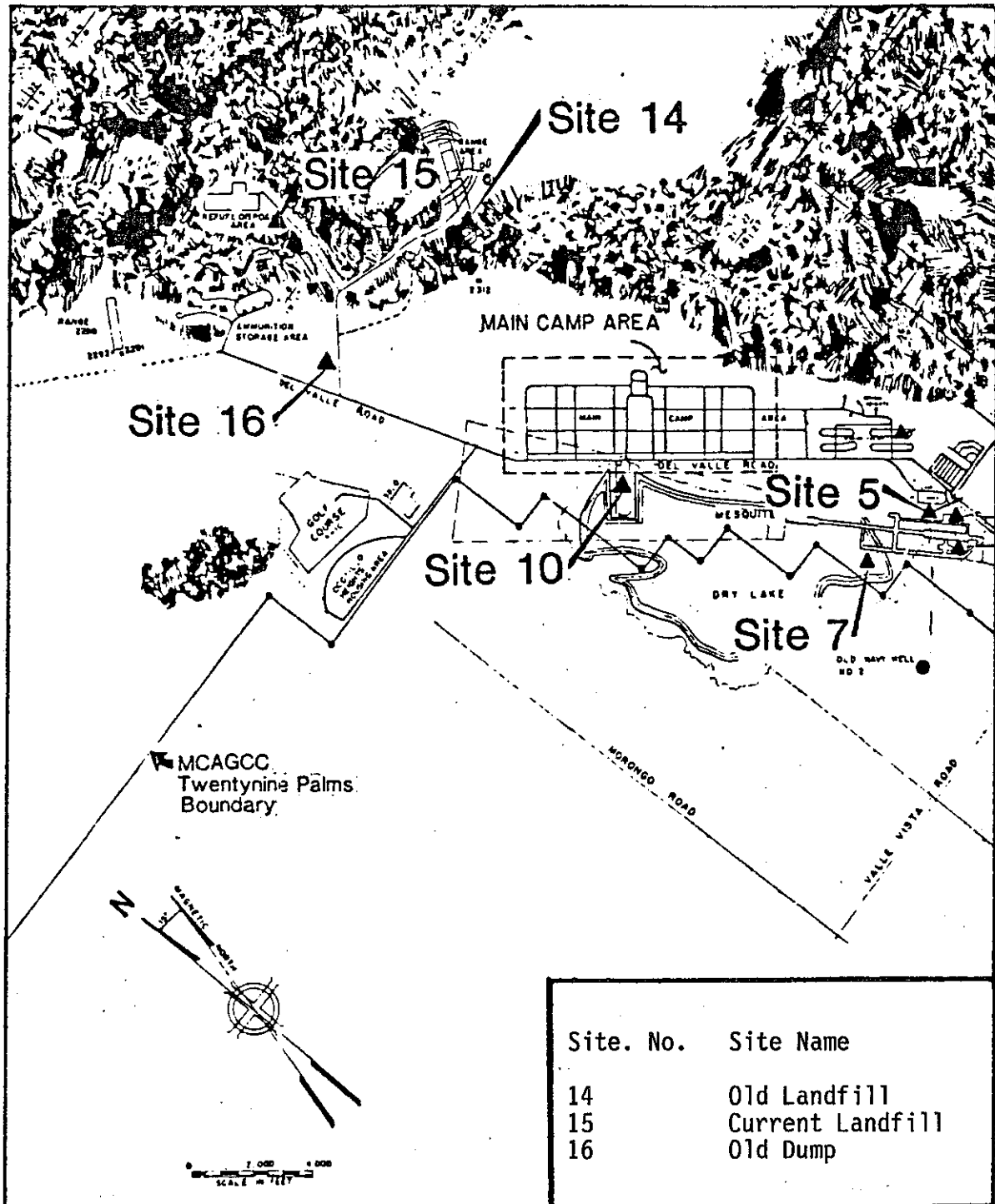
CALIFORNIA REGIONAL WATER QUALITY CONTROL BOARD - 7



UNITED STATES MARINE CORPS AIR GROUND COMBAT CENTER
CLASS III WASTE MANAGEMENT FACILITY
Twentynine Palms - San Bernardino County
S 1/2, Section 8, NE 1/4, Section 17, T2N, R9E, SBB&M

Order No. 88-139
Attachment A

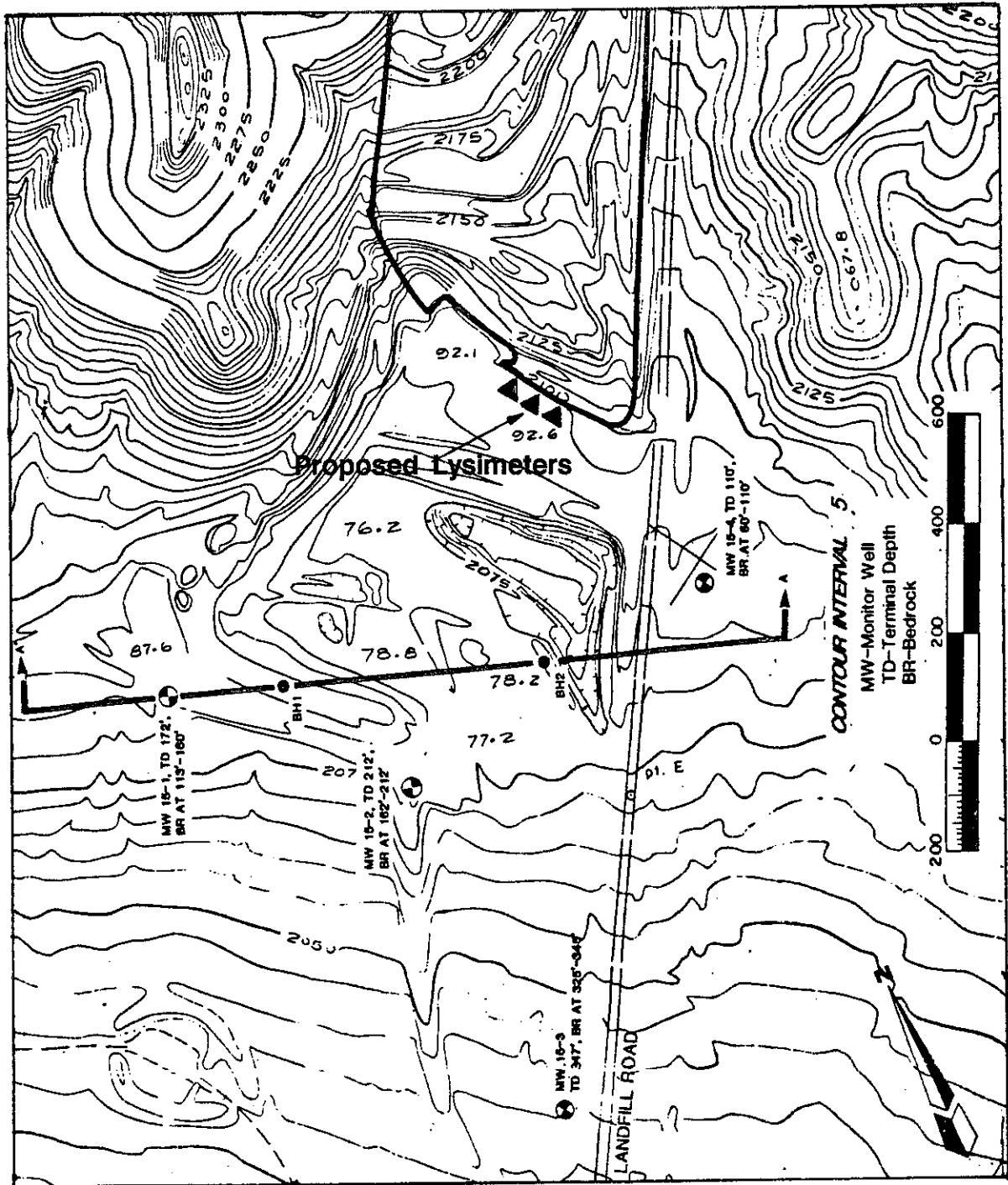
CALIFORNIA REGIONAL WATER QUALITY CONTROL BOARD - 7



UNITED STATES MARINE CORPS AIR GROUND COMBAT CENTER
 CLASS III WASTE MANAGEMENT FACILITY
 Twentynine Palms - San Bernardino County
 S 1/2, Section 8, NE 1/4, Section 17, T2N, R9E, SBB&M

Order No. 88-139
 Attachment B

CALIFORNIA REGIONAL WATER QUALITY CONTROL BOARD - 7



UNITED STATES MARINE CORPS AIR GROUND COMBAT CENTER
CLASS III WASTE MANAGEMENT FACILITY
Twentynine Palms - San Bernardino County
S 1/2, Section 8, NE 1/4, Section 17, T2N, R9E, SBB&M

Order No. 88-139
Attachment C