

CALIFORNIA REGIONAL WATER QUALITY CONTROL BOARD
COLORADO RIVER BASIN REGION

ORDER NO. 88-61

WASTE DISCHARGE REQUIREMENTS
FOR
TAMARISK PARK
Southeast of Desert Hot Springs - Riverside County

The California Regional Water Quality Control Board, Colorado River Basin Region, finds that:

1. Sam Hachem, (hereinafter also referred to as the discharger), P.O. Box 457, North Palm Springs, California, 92258, verified, via the park manager, on February 4, 1988, the below updated information on the discharge of waste.
2. The discharger is discharging a maximum of 40,000 gallons-per-day of domestic sewage from a mobile home and recreational vehicle park having 78 mobile home spaces, 98 recreational vehicle spaces, six restrooms, a laundromat and two recreation rooms. The wastewater is discharged into septic tank/seepage pit disposal systems located in the NE 1/4, NE 1/4, NW 1/4 of Section 14, T3S, R5E, SBB&M.
3. The discharger is reserving areas of sufficient size for possible future 100 percent replacement of the seepage pits.
4. This discharge has been subject to waste discharge requirements adopted in Board Order No. 86-6. The Order is updated due to a division of the park.
5. There are no domestic wells within 200 feet of the discharge facilities described in Findings No. 2 and 3 (above).
6. The discharger informs that wastewater from three (3) swimming pools and three hot pools is periodically discharged into separate seepage pits.
7. The Water Quality Control Plan for the Colorado River Basin Region of California was adopted by the Regional Board on November 14, 1984.
8. The Basin Plan delineates the location of discharge to be in the Coachella Hydrologic Subunit, which has the following beneficial uses of ground water:
 - a. Municipal supply
 - b. Industrial supply
 - c. Agricultural supply
9. This park is located in the Miracle Hill Subarea of the Coachella Hydrologic Subunit. Ground water in this area is warm and mineralized, and is used in hot pools and for landscape irrigation.
10. The Board has notified the discharger and interested agencies and persons of its intent to update waste discharge requirements for the discharge.

*Changed
of ownership
Bd. Ord. # 95-028
1/25/95*

*rescinded by Bd Ord#
97-121 9/24/97
replaced by 97-5022*

11. The Board in a public meeting heard and considered all comments pertaining to the existing discharge.
12. These waste discharge requirements govern an existing facility, which the discharger is currently operating, and therefore is exempt from the provisions of the California Environmental Quality Act in accordance with Section 15301, Chapter 3, Title 14 of the California Code of Regulations.

IT IS HEREBY ORDERED, the discharger shall comply with the following:

A. Discharge Specifications

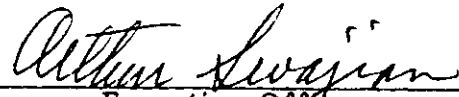
1. Neither the treatment nor the discharge of wastewater shall create a pollution or a nuisance as defined in Division 7 of the California Code of Regulations.
2. No wastewater other than domestic sewage and swimming pool and hot pool wastewater shall be discharged at this location.
3. Wastewater discharged subsurface shall be retained underground with no surfacing.
4. Adequate measures shall be taken to assure that flood or surface drainage waters do not erode or otherwise render portions of the discharge facilities inoperable.
5. Septic tank cleanings shall be discharged only by a duly authorized service.
6. Swimming pool and hot pool wastewater shall not be discharged into a sewage disposal system.

B. Provisions

1. Sufficient land area shall be reserved for possible future 100 percent replacement of the seepage pits, until such time as this park is connected to a municipal sewerage system.
2. The discharger shall comply with "Monitoring and Reporting Program No. 88-61, and future revisions thereto, as specified by the Executive Officer.
3. Prior to any modifications in this facility which would result in material change in the quality or quantity of wastewater discharged, or any material change in location of discharge, the discharger shall report in writing to the Regional Board.
4. In the event of any change in operation, or in control or ownership of land or waste disposal facilities owned or controlled by the discharger, the discharger shall:
 - a. Notify this Board of such change; and
 - b. Transmit a copy of this Order to the succeeding owner or operator, and file a copy of the transmittal letter with this Board.

5. This Order supersedes Board Order No. 86-6.

I, Arthur Swajian, Executive Officer, do hereby certify the foregoing is a full, true and correct copy of an Order adopted by the California Regional Water Quality Control Board, Colorado River Basin Region, on May 12, 1988.


Executive Officer

CALIFORNIA REGIONAL WATER QUALITY CONTROL BOARD
COLORADO RIVER BASIN REGION

MONITORING AND REPORTING PROGRAM NO. 88-61
FOR
TAMARISK PARK
Southeast of Desert Hot Springs - Riverside County

Location of Discharge: NE 1/4, NE 1/4, NW 1/4 of Section 14, T3S, R5E, SBB&M

MONITORING

The discharger shall submit an annual status report on the following:

1. Number of spaces presently connected to the sewerage system.
2. List any proposed changes in the sewage disposal facilities during the upcoming year.


REPORTING

1. Annual reports shall be submitted to the Regional Board by January 15th of each year to:

California Regional Water Quality Control Board
Colorado River Basin Region
73-271 Highway 111, Suite 21
Palm Desert, CA 92260

2. Report immediately any surfacing of wastewater or other failures of the system by telephone and follow-up by letter.

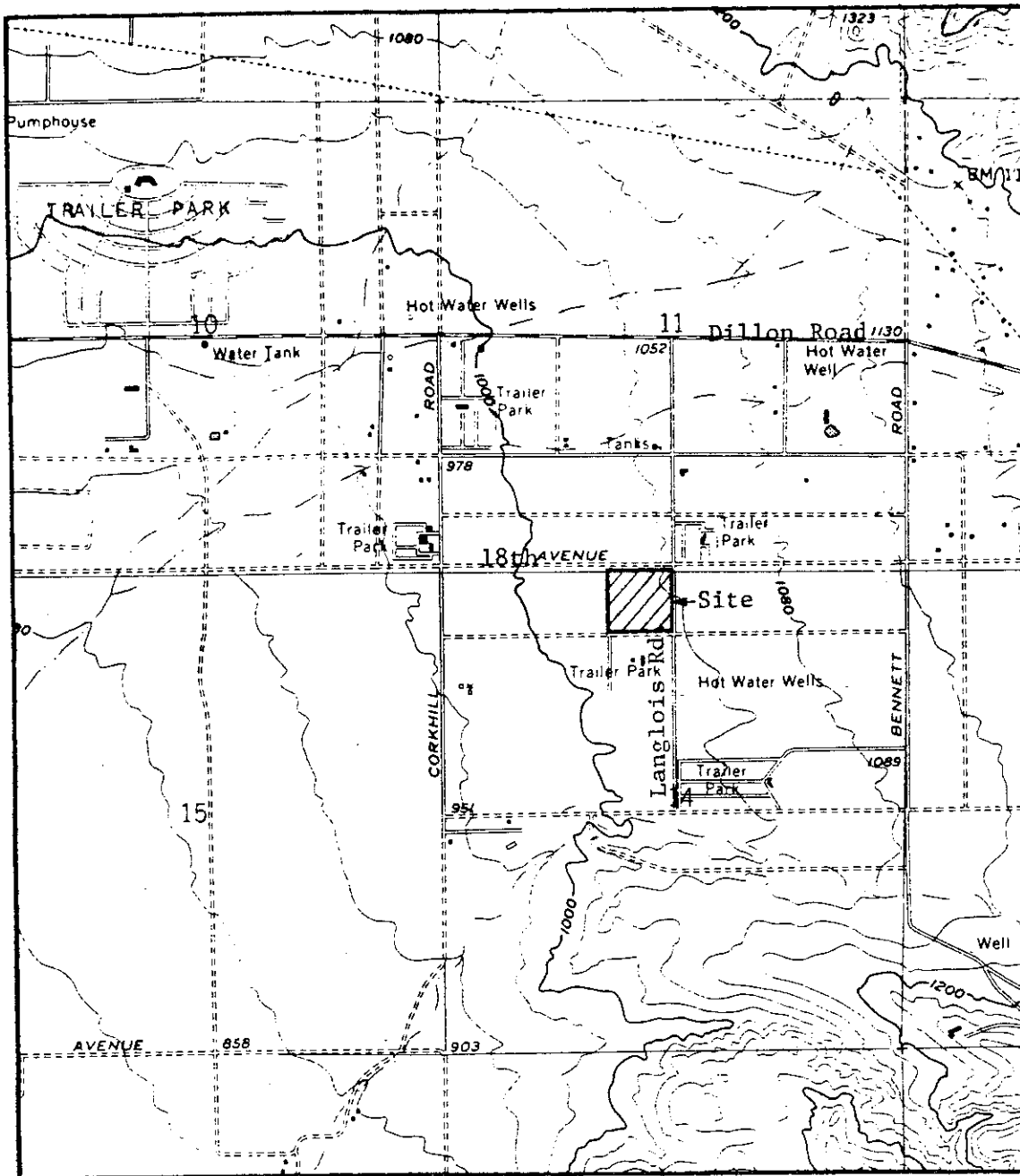
ORDERED BY:


Executive Officer

May 12, 1988

Date

CALIFORNIA REGIONAL WATER QUALITY CONTROL BOARD - 7

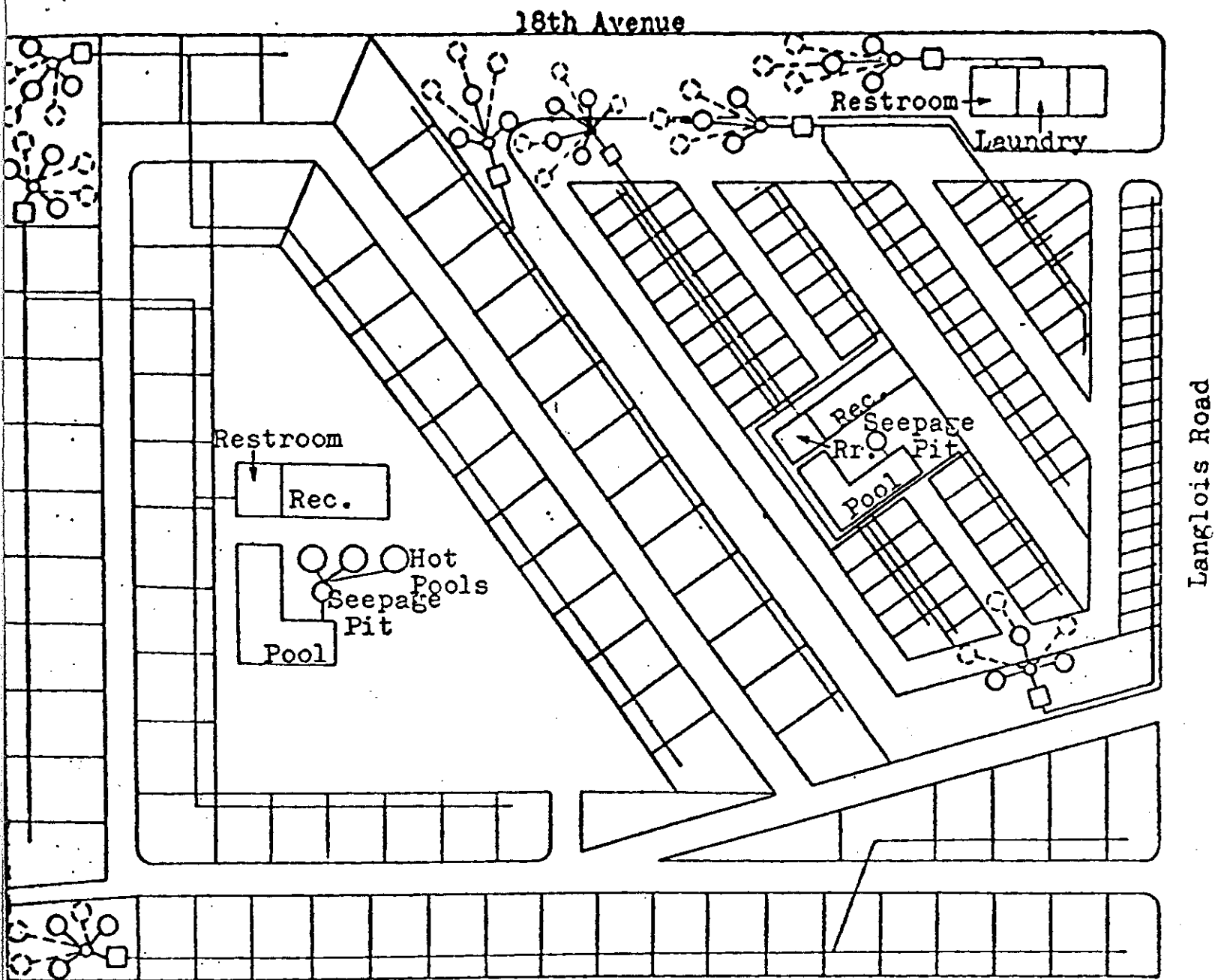


SITE MAP

TAMARISK PARK

Southeast of Desert Hot Springs - Riverside County
NE 1/4, NE 1/4, NW 1/4, Section 14, T3S, R5E, SBB&M
USGS Seven Palms Valley 7.5 Min. Topographic Map

Order No. 88-61



- Septic Tank
- Seepage Pit
- 100% Back-up Area

N
↑
No scale

SEWAGE DISPOSAL FACILITIES SKETCH
 TAMARISK PARK
 Southeast of Desert Hot Springs - Riverside County