

CALIFORNIA REGIONAL WATER QUALITY CONTROL BOARD
COLORADO RIVER BASIN REGION

ORDER NO. 90-007

WASTE DISCHARGE REQUIREMENTS
FOR
HI-DESERT MEDICAL CENTER
East of Joshua Tree - San Bernardino County

The California Regional Water Quality Control Board, Colorado River Basin Region, finds that:

1. Hi-Desert Memorial Hospital District (hereinafter also referred to as the discharger), 6601 White Feather Road, Joshua Tree, California 92252, supplied the updated information on the discharge of wastes on November 1, 1989.
2. The discharger is discharging a maximum of 20,000 gallons-per-day of domestic sewage from a 56-bed hospital facility into a system of one 10,000-gallon septic tank and twelve (12) seepage pits (see Sketches No. 1 and 2). The sewage consists primarily of domestic wastewater and kitchen wastewater. It also contains very small amounts of laboratory wastes and negligible amounts of photographic chemical wastes that remain in the wastewater.

The discharger is also discharging a maximum of 1,000 gallons-per-year boiler blow-down and cooling tower wastewater into an irrigation/infiltration system (see Sketches No. 1 and 3). No chemicals are added to the cooling tower. The hospital facility is located in the E $\frac{1}{2}$, NW $\frac{1}{4}$, Section 32, T1N, R7E, SBB&M.

3. The discharger has reserved an area of sufficient size for possible future 100 percent replacement of seepage pits.
4. This discharge has been subject to waste discharge requirements adopted in Board Order No. 84-094.
5. The Water Quality Control Plan for the Colorado River Basin Region of California was adopted by the Regional Board on November 14, 1984.
6. There are no domestic wells within 200 feet of the discharge facilities described in Finding No. 2, above.
7. The beneficial uses of the ground water of the Joshua Tree Hydrologic Unit are:
 - a. Municipal supply (MUN)
 - b. Industrial supply (IND)
8. The Board has notified the discharger and interested agencies and persons of its intent to update waste discharge requirements for the discharge.
9. The Board in a public meeting heard and considered all comments pertaining to the existing discharge.

*Superseded
by Bd. Ord.
94-007
3/15/94*

10. In accordance with Section 15301, Chapter 3, Title 14, of the California Code of Regulations, the issuance of these waste discharge requirements, which govern the operation of an existing facility involving negligible or no expansion of use beyond that previously existing, is exempt from the provisions of the California Environmental Quality Act (Public Resources Code, Section 21000 et seq.).

IT IS HEREBY ORDERED, the discharger shall comply with the following specifications:

1. Neither the treatment nor the discharge of wastewater shall create pollution or nuisance as defined in Division 7 of the California Water Code.
2. No wastewaters other than those described in Finding No. 2, above, shall be discharged at this location.
3. The total volume of wastewater discharged shall not exceed 20,000 gallons-per-day.
4. Treated or untreated sludge or similar solid waste materials shall be disposed only at locations approved by the Regional Board.
5. Adequate measures shall be taken to assure that flood or surface drainage waters do not erode or otherwise render portions of the discharge facilities inoperable.
6. Septic tank cleanings shall be discharged only by a duly authorized service.
7. Wastewater discharged subsurface shall be retained underground with no surfacing.
8. The discharges of water softener brines, laundry wastewater and toxic chemical wastes are prohibited at this location.
9. Standby facilities shall be provided in the event of pump and/or commercial power failure.
10. The increase in concentration of chemical constituents in the blow-down wastewater discharged by infiltration, over that contained in the water supply, shall not exceed the following increments:

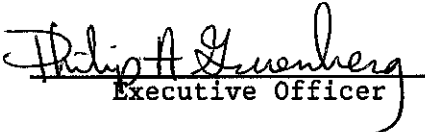
| <u>Constituents</u> | <u>Increments (mg/l)</u> |
|------------------------------|--------------------------|
| Total Dissolved Solids (TDS) | 300 |
| Chloride (Cl) | 50 |
| Sulfate (SO ₄) | 40 |
| Fluoride (F) | 0.5 |

11. Sufficient land area shall be reserved for possible future 100 percent replacement of the seepage pits, until such time as these facilities are connected to a municipal sewerage system.
12. The discharger shall comply with the attached "Monitoring and Reporting Program No. 90-007", and future revisions thereto, as specified by the Executive Officer.

13. Prior to any modifications in these facilities which would result in material change in the quality or quantity of wastewater discharged, or any material change in location of discharge, the discharger shall report in writing to the Regional Board.
14. In the event of any change in operation, or in control or ownership of land or waste disposal facilities owned or controlled by the discharger, the discharger shall:
 - a. Notify this Board of such change; and
 - b. Transmit a copy of this Order to the succeeding owner or operator, and file a copy of the transmittal letter with this Board.

IT IS FURTHER ORDERED that Board Order No. 84-094 be superseded by this Order.

I, Philip A. Gruenberg, Executive Officer, do hereby certify the foregoing is a full, true and correct copy of an Order adopted by the California Regional Water Quality Control Board, Colorado River Basin Region, on January 17, 1990.


Executive Officer

CALIFORNIA REGIONAL WATER QUALITY CONTROL BOARD
COLORADO RIVER BASIN REGION

MONITORING AND REPORTING PROGRAM NO. 90-007
FOR
HI-DESERT MEDICAL CENTER
East of Joshua Tree - San Bernardino County

Location of Discharge: E $\frac{1}{2}$, NW $\frac{1}{4}$, Section 32, T1N, R7E, SBB&M

MONITORING

BLOW-DOWN WASTEWATER

Blow-down wastewater discharged by infiltration shall be monitored for the following constituents. All samples shall be taken from the wastewater sump designated in Sketch No. 3.

| <u>Constituent</u> | <u>Unit</u> | <u>Type of Sample</u> | <u>Sample Frequency</u> |
|----------------------------|-------------|-----------------------|-------------------------|
| Total Dissolved Solids | mg/l | Grab | Annually |
| Chloride (Cl) | mg/l | Grab | Annually |
| Sulfate (SO ₄) | mg/l | Grab | Annually |
| Fluoride (F) | mg/l | Grab | Annually |

WATER SUPPLY

The water supply shall be monitored for the following constituents:

| <u>Constituent</u> | <u>Unit</u> | <u>Type of Sample</u> | <u>Sample Frequency</u> |
|----------------------------|-------------|-----------------------|-------------------------|
| Total Dissolved Solids | mg/l | Grab | Annually |
| Chloride (Cl) | mg/l | Grab | Annually |
| Sulfate (SO ₄) | mg/l | Grab | Annually |
| Fluoride (F) | mg/l | Grab | Annually |

REPORTING

Monitoring reports shall be submitted to the Regional Board annually by January 15th of each year.

Submit monitoring reports to:

California Regional Water Quality Control Board
Colorado River Basin Region
73-271 Highway 111, Suite 21
Palm Desert, CA 92260

If no blowdown wastewater was discharged during the previous year, then a letter stating this fact shall be submitted annually in lieu of the regular monitoring report.

Immediately report to this office by telephone and follow-up by letter any failures of the sewerage system.

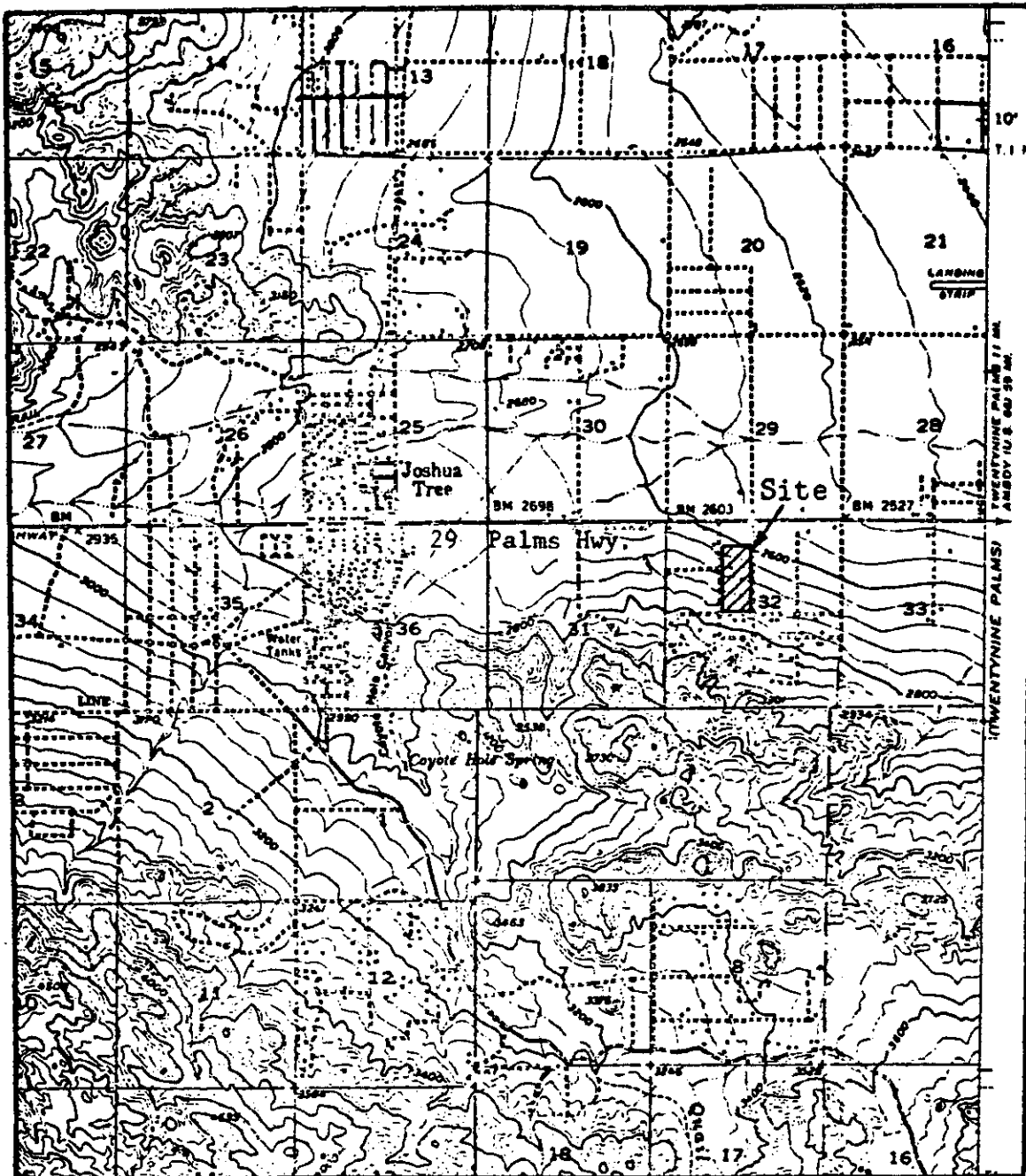
ORDERED BY:

Philip A. Gruenberg
Executive Officer

January 17, 1990

Date

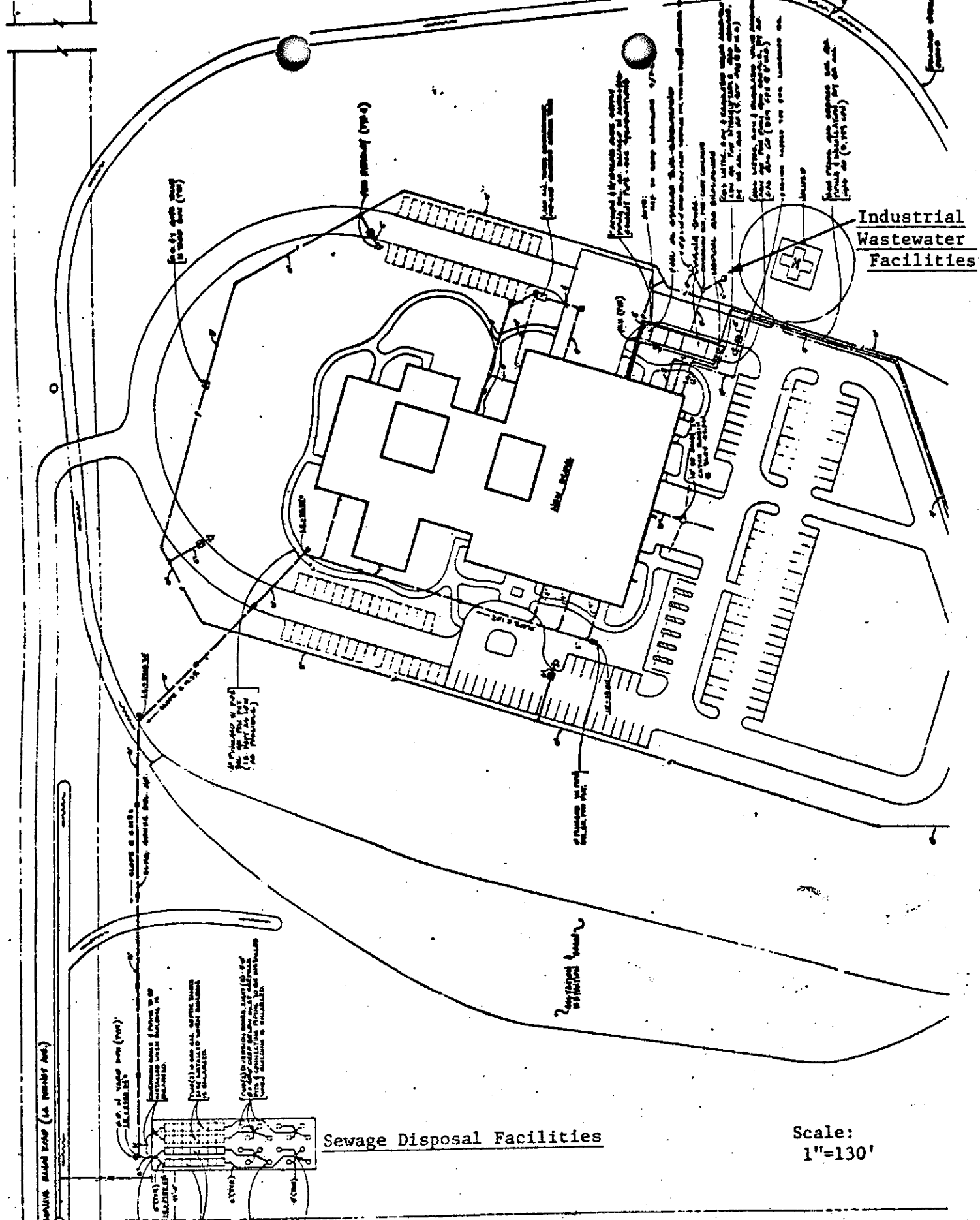
CALIFORNIA REGIONAL WATER QUALITY CONTROL BOARD -7



Scale:
1"=1 mi.

SITE MAP
HI-DESERT MEDICAL CENTER
East of Joshua Tree - San Bernardino County
Portion of the E $\frac{1}{4}$, NW $\frac{1}{4}$ of Section 32, T1N, R7E, SBB&M
USGS Joshua Tree 15 min. Topographic Map

Order No. 90-007



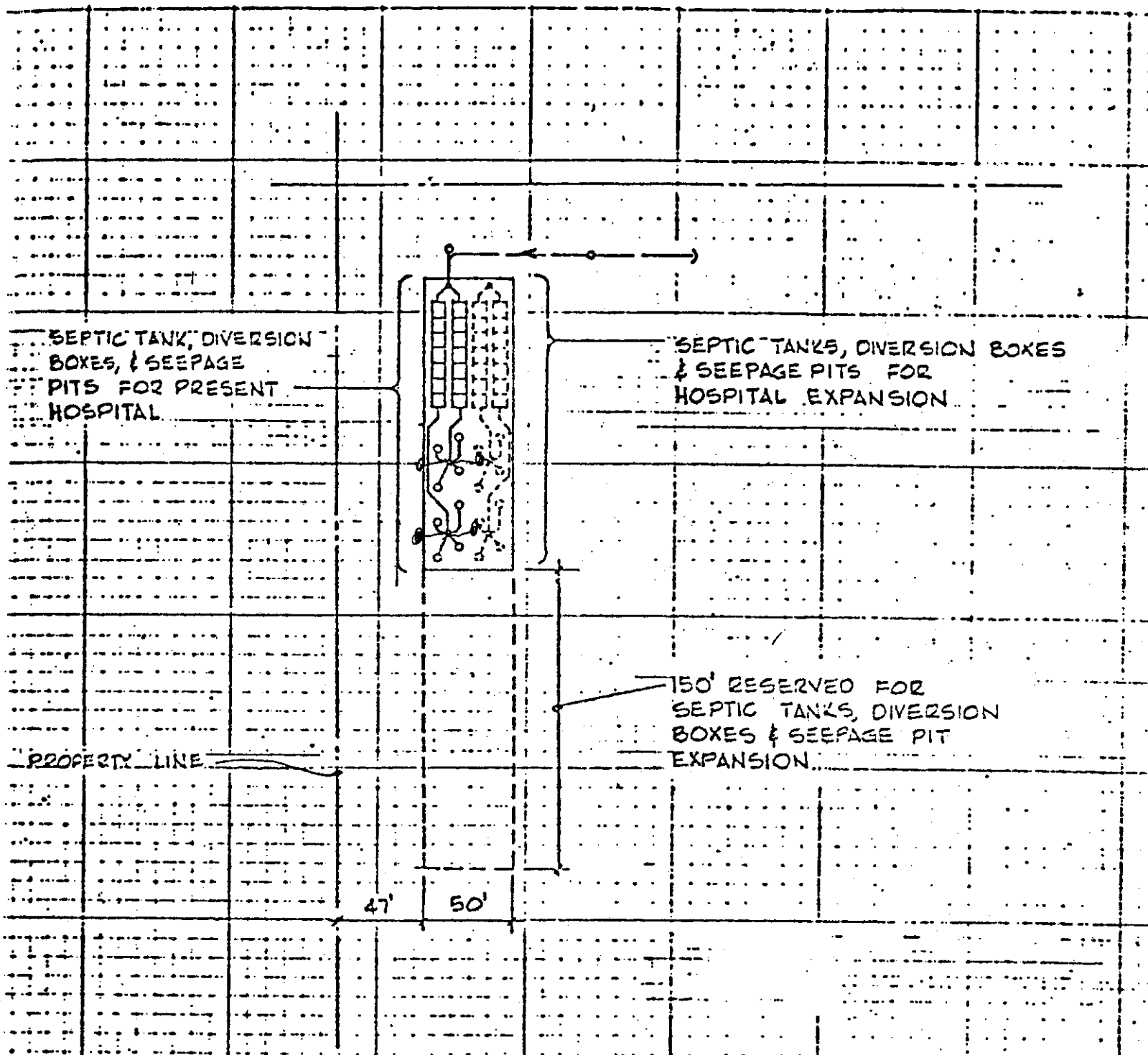
Industrial Wastewater Facilities

Sewage Disposal Facilities

Scale: 1"=130'

SKETCH NO. 1
WASTEWATER DISPOSAL FACILITIES

HI-DESERT MEDICAL CENTER
East of Joshua Tree - San Bernardino County



SEPTIC TANK, DIVERSION
BOXES, & SEEPAGE
PITS FOR PRESENT
HOSPITAL

SEPTIC TANKS, DIVERSION BOXES
& SEEPAGE PITS FOR
HOSPITAL EXPANSION

PROPERTY LINE

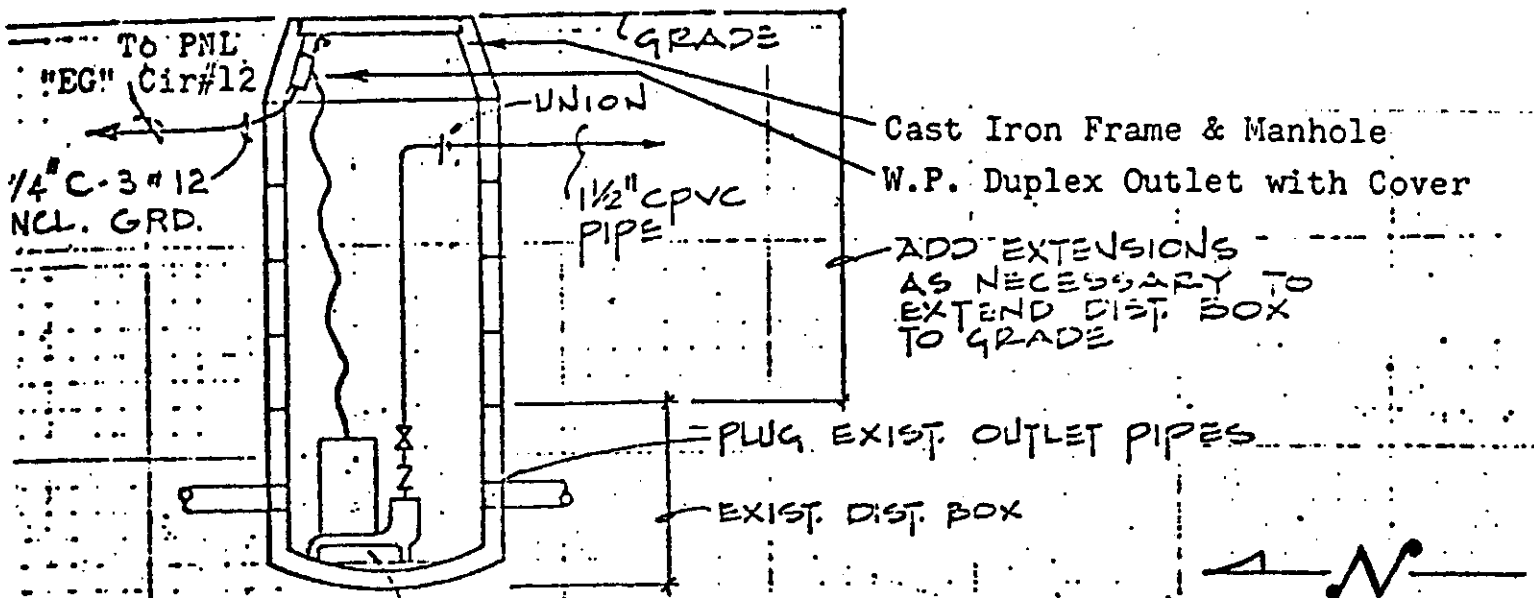
150' RESERVED FOR
SEPTIC TANKS, DIVERSION
BOXES & SEEPAGE PIT
EXPANSION

47' 50'

PARTIAL SITE PLAN
SCALE 1" = 80'

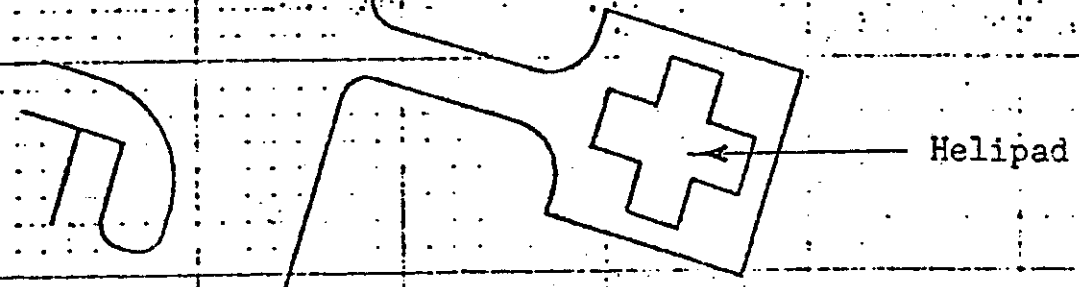
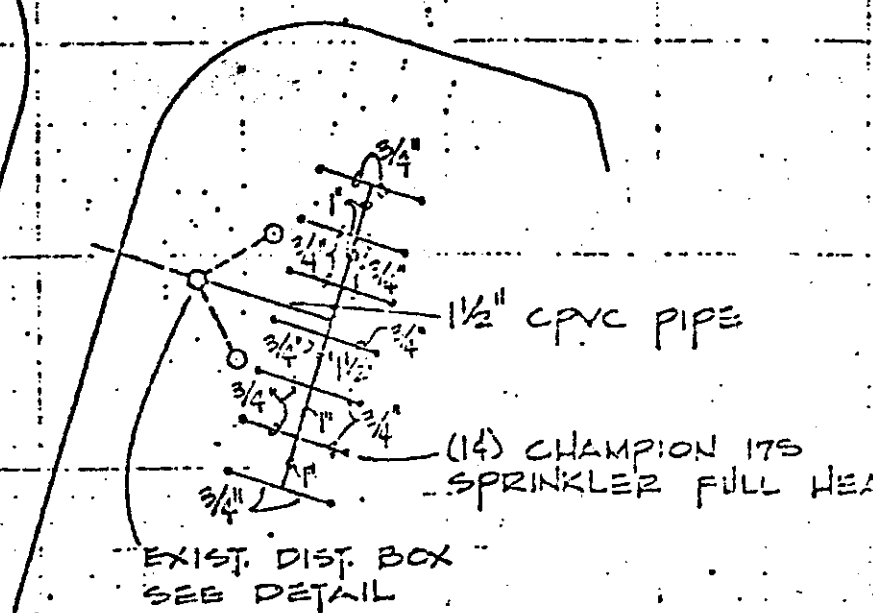


SKETCH NO. 2
SEWAGE DISPOSAL FACILITIES
HI-DESERT MEDICAL CENTER
East of Joshua Tree - San Bernardino County



NEW WELL # 1/4-140104 1/3
 SUMP PUMP
 20 GPM @ 22' HD.
 1/3 HP, 120V, 1φ

DIST. BOX
 SCALE: 3/8" = 1'-0"



SITE PLAN
 SCALE: 1" = 40'-0"

SKETCH NO. 3
 INDUSTRIAL WASTEWATER DISPOSAL SYSTEM

HI-DESERT MEDICAL CENTER
 East of Joshua Tree - San Bernardino County