

CALIFORNIA REGIONAL WATER QUALITY CONTROL BOARD
COLORADO RIVER BASIN REGION

ORDER NO. 90-025

WASTE DISCHARGE REQUIREMENTS
FOR
LUCERNE VALLEY HIGH SCHOOL
Lucerne Valley - San Bernardino County

The California Regional Water Quality Control Board, Colorado River Basin Region, finds that:

1. Lucerne Valley Unified School District (hereinafter also referred to as the discharger), HCR Box 900, Lucerne Valley, California, 92356, submitted a Report of Waste Discharge, dated December 12, 1989.
2. The discharger proposes to discharge from a high school designed for 1,000 students and consisting of seven buildings, a maximum of 30,000 gallons-per-day of domestic sewage. The wastewater is to be discharged into septic tank/seepage pit disposal systems located throughout the school property in the E½ of the NW¼ of Section 12, T4N, R1W, SBB&M.
3. The discharger is reserving areas of sufficient size for possible future 100 percent replacement of the seepage pits.
4. There are no domestic wells within 200 feet of the discharge facilities described in Findings No. 2 and 3 (above).
5. The Water Quality Control Plan for the Colorado River Basin Region of California designates the beneficial uses of ground and surface waters in this Region.
6. The beneficial uses of ground waters in the Lucerne Hydrologic Unit are:
 - a. Municipal supply (MUN)
 - b. Industrial supply (IND)
 - c. Agricultural supply (AGR)
7. The Board has notified the discharger, and all known interested agencies and persons of its intent to prescribe waste discharge requirements for said discharge and has provided them with an opportunity for a public meeting and an opportunity to submit comments.
8. The Board in a public meeting heard and considered all comments pertaining to this discharge.

*rescinded
by Bd ord #97-121 9/24/97
& replaced by 97-50025*

9. The San Bernardino County Board of Supervisors has approved a Negative Declaration (approval date August 4, 1987) for this school facility. The Regional Board has reviewed this Negative Declaration. The below waste discharge requirements are designed to assure against any significant adverse effects on water quality.

IT IS HEREBY ORDERED, that the discharger shall comply with the following specifications:

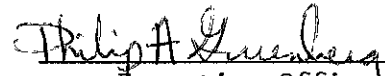
A. Discharge Specifications

1. Neither the treatment nor the discharge of wastewater shall create pollution or a nuisance as defined in Division 7 of the California Water Code.
2. No wastewater other than domestic sewage shall be discharged at this location.
3. Wastewater discharged subsurface shall be retained underground with no surfacing.
4. Adequate measures shall be taken to assure that flood or surface drainage waters do not erode or otherwise render portions of the discharge facilities inoperable.
5. Septic tank cleanings shall be discharged only by a duly authorized service.

B. Provisions

1. Sufficient land area shall be reserved for possible future 100 percent replacement of the seepage pits, until such time as this school is connected to a municipal sewerage system.
2. The discharger shall comply with "Monitoring and Reporting Program No. 90-025", and future revisions thereto, as specified by the Executive Officer.
3. Prior to any modifications in this facility which would result in material change in the quality or quantity of wastewater treated or discharged, or any material change in the location of discharge, the discharger shall report all pertinent information in writing to the Regional Board.
4. Prior to any change in ownership of this high school, the discharger shall:
 - a. Specify as a condition of transfer that the area specified in Provision B.1 (above) remain servient to the school, for the purpose of providing additional subsurface sewage disposal capacity, until such time as this school is connected to a municipal sewerage system.
 - b. Transmit a copy of this Board Order to the succeeding owner or operator and file a copy of the transmittal letter with this Regional Board.

I, Philip A. Gruenberg, Executive Officer, do hereby certify the foregoing is a full, true and correct copy of an Order adopted by the California Regional Water Quality Control Board, Colorado River Basin Region, on March 14, 1990.



Executive Officer

CALIFORNIA REGIONAL WATER QUALITY CONTROL BOARD
COLORADO RIVER BASIN REGION

MONITORING AND REPORTING PROGRAM NO. 90-025
FOR
LUCERNE VALLEY HIGH SCHOOL
Lucerne Valley - San Bernardino County

Location of Discharge: E½, NW¼ of Section 12, T4N, R1W, SBB&M

MONITORING

This discharger shall submit an annual status report on the following:

1. Number of students presently attending the school.
2. List any proposed changes in the sewage disposal facilities during the upcoming year.
3. Explain any surfacing of wastewater or other failures of the system over the past year.

REPORTING

Annual reports shall be submitted to the Regional Board by January 15th of each year to:

California Regional Water Quality Control Board
Colorado River Basin Region
73-271 Highway 111, Suite 21
Palm Desert, CA 92260

Report immediately any surfacing of wastewater or other failures of the system by telephone and follow-up by letter, with inclusion also in the annual report.

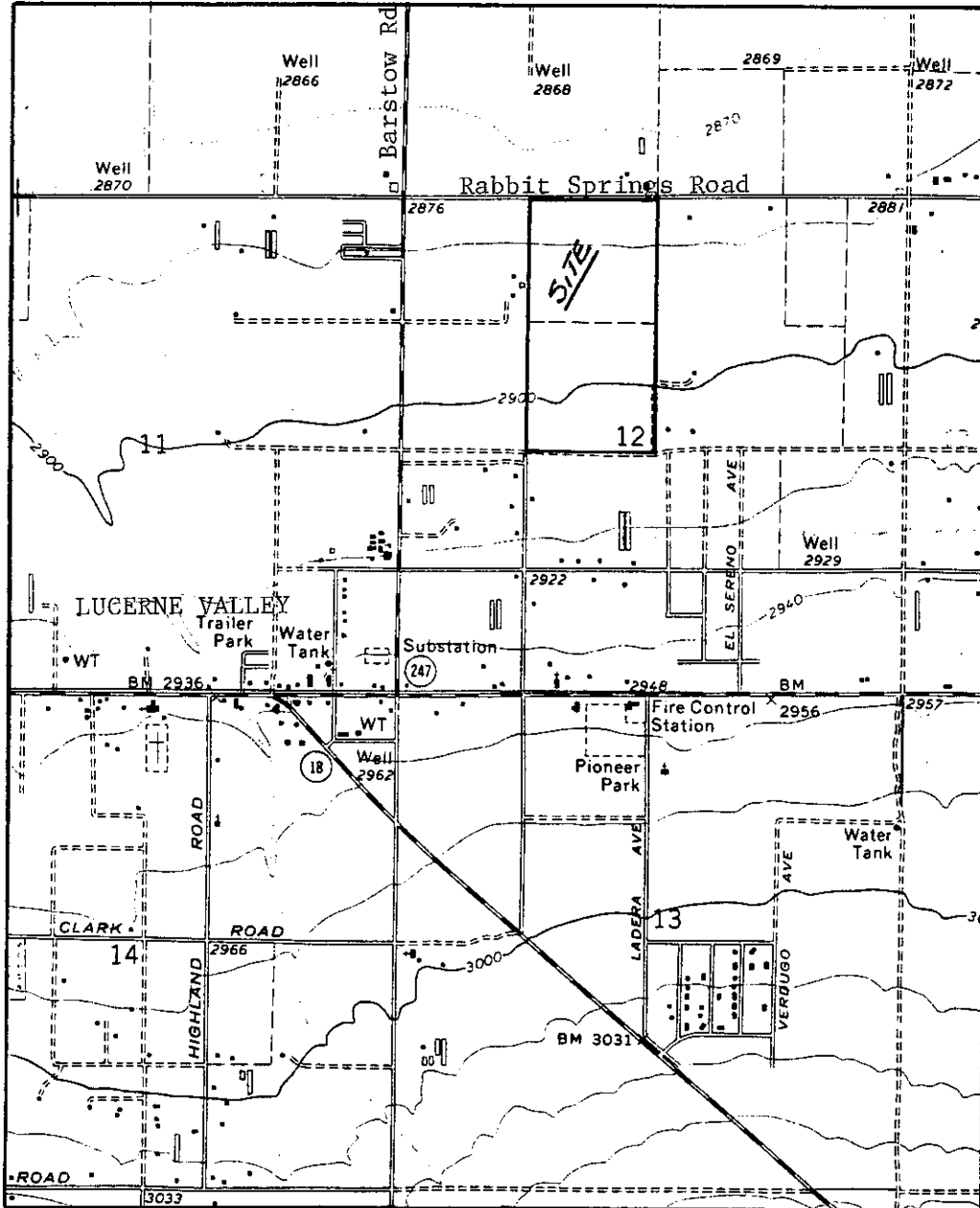
ORDERED BY:

Philip A. Gumbert
Executive Officer

March 14, 1990

Date

CALIFORNIA REGIONAL WATER QUALITY CONTROL BOARD - 7



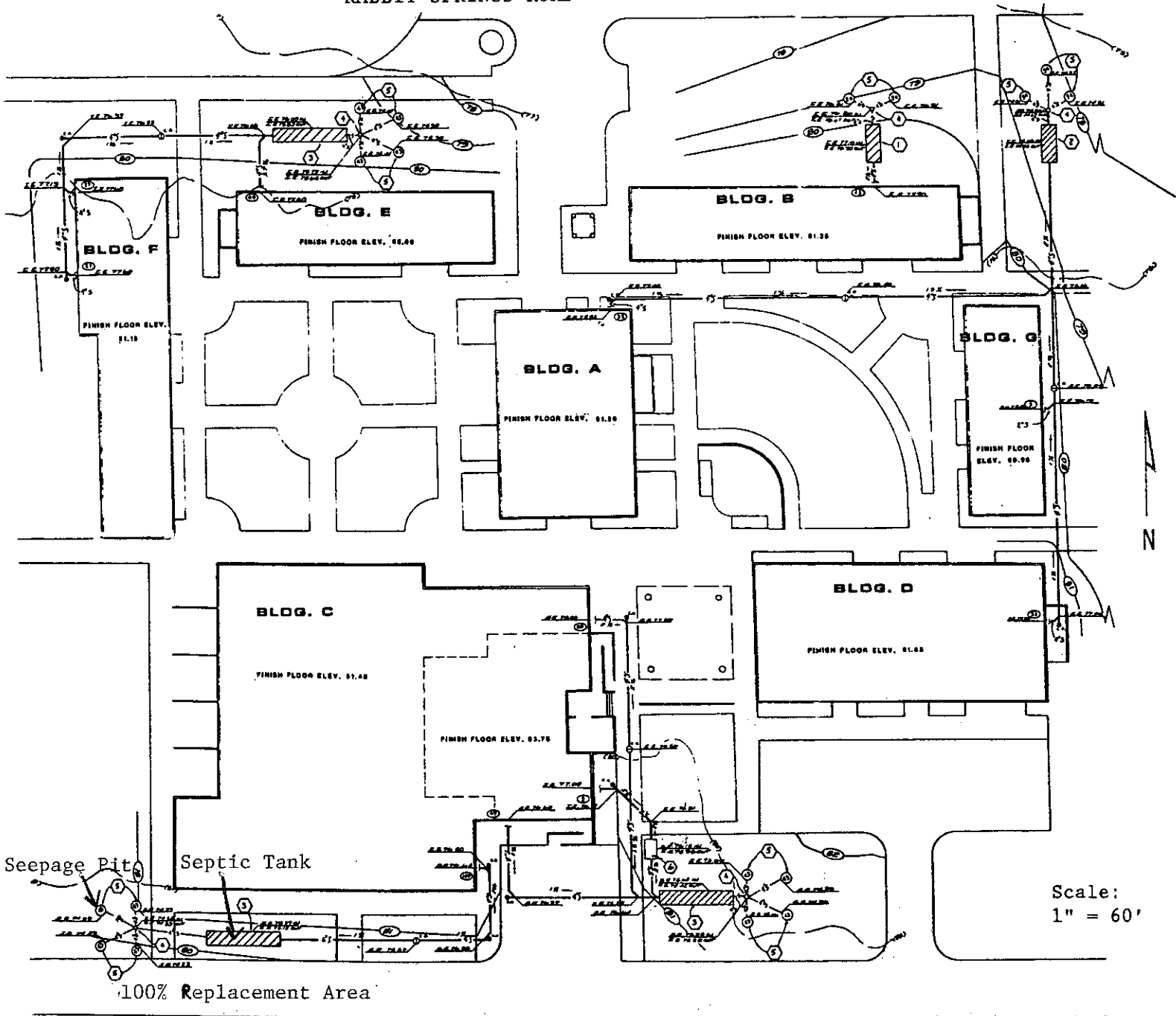
Scale:
1"=2,000'

SITE MAP

LUCERNE VALLEY HIGH SCHOOL
Lucerne Valley - San Bernardino County
East 1/2 of the NW 1/4 of Section 12, T4N, R1W, SBB&M
USGS Lucerne Valley, California 7.5 Min. Topographic Map

Order No. 90-025

RABBIT SPRINGS ROAD



PRELIMINARY SEWAGE DISPOSAL FACILITIES SKETCH
LUCERNE VALLEY HIGH SCHOOL
Lucerne Valley - San Bernardino County