

CALIFORNIA REGIONAL WATER QUALITY CONTROL BOARD
COLORADO RIVER BASIN REGION

ORDER NO. 90-031

WASTE DISCHARGE REQUIREMENTS
FOR
MISSION SPRINGS WATER DISTRICT
DESERT CREST WASTEWATER TREATMENT PLANT
Southeast of Desert Hot Springs - Riverside County

The California Regional Water Quality Control Board, Colorado River Basin Region, finds that:

1. Mission Springs Water District (hereinafter also referred to as the discharger), 66575 E. Second Street, Desert Hot Springs, California 92240, supplied the updated information on the discharge of waste on January 12, 1990.
2. The discharger is discharging a summer maximum average of 55,000 gallons-per-day and a winter maximum average of 85,000 gallons-per-day of domestic wastewater from two mobile home parks consisting of 750 mobile home spaces. The wastewater from these two parks is treated in an activated sludge treatment plant which is designed for 180,000 gallons-per-day. The effluent from this plant is discharged into three (3) infiltration basins. The discharge site is located in the NW $\frac{1}{4}$, SE $\frac{1}{4}$ of Section 10, T3S, R5E, SBB&M.
3. This discharge has been subject to waste discharge requirements adopted in Board Order No. 85-028.
4. The Water Quality Control Plan for the Colorado River Basin Region of California designates the beneficial uses of ground and surface waters in this Region.
5. The beneficial uses of ground waters in the Coachella Hydrologic Subunit are:
 - a. Municipal supply (MUN)
 - b. Industrial supply (IND)
 - c. Agricultural supply (AGR)
6. There are no domestic wells within 500 feet of the discharge facilities described in Finding No. 2, (above).
7. The Board has notified the discharger and all known interested agencies and persons of its intent to update waste discharge requirements for this discharge.
8. The Board in a public meeting heard and considered all comments pertaining to this discharge.

*Superseded
by Bd. Ord. # 95-050
June 28, 1995*

9. In accordance with Section 15301, Chapter 3, Title 14, of the California Code of Regulations, the issuance of these waste discharge requirements, which govern the operation of an existing facility involving negligible or no expansion of use beyond that previously existing, is exempt from the provisions of the California Environmental Quality Act (Public Resources Code, Section 21000 et seq.).

IT IS HEREBY ORDERED, that the discharger shall comply with the following specifications:

1. Representative samples of wastewater effluent discharged to infiltration basins from treatment facilities shall not contain constituents in excess of the following limits:

<u>Constituent</u>	<u>Unit</u>	<u>30-Day Arithmetic Mean¹ Discharge Rate</u>	<u>7-Day Arithmetic Mean² Discharge Rate</u>
20°C BOD ₅	mg/l	30	45
Suspended Solids	mg/l	30	45
Settleable Matter	ml/l	0.3	0.5

2. The treatment or disposal of wastes at this facility shall not cause pollution or nuisance as defined in Sections 13050(1) and 13050(m) of Division 7 of the California Water Code.
3. No wastewater other than domestic wastewater shall be discharged into the sewage disposal system described in Finding No. 2 (above).
4. A minimum depth of freeboard of two (2) feet shall be maintained at all times in each infiltration basin.
5. Treated or untreated sludge, or similar solid waste materials, shall be disposed only at locations approved by the Regional Board's Executive Officer.
6. Adequate measures shall be taken to assure that unauthorized persons are effectively excluded from contact with the wastewater.
7. Adequate measures shall be taken to assure that flood or surface drainage waters do not erode or otherwise render portions of the discharge facilities inoperable.


¹ 30-day mean: The arithmetic mean of pollutant parameter values of samples collected in a period of 30 consecutive days.

² 7-day mean: The arithmetic mean of pollutant parameter values of samples collected in a period of 7 consecutive days.

8. There shall be no surface flow of wastewater away from the designated disposal areas.
9. Disposal by ponding shall be conducted in such a manner that there shall be no stranded or exposed sewage solids.
10. A surface aerobic environment shall be maintained in each basin.
11. Infiltration facilities (basins) shall be maintained and operated so as to maximize infiltration and minimize the increase in salinity of the infiltrating wastewater by evaporation.
12. Facilities shall be available to keep the plant in operation in the event of commercial power failure.
13. The discharger's wastewater treatment plant shall be supervised and operated by persons possessing certification of appropriate grade pursuant to Subchapter 4, Chapter 4, Title 23 of the California Code of Regulations.
14. The discharger shall implement acceptable operational and maintenance practices at the wastewater treatment plant so that needed repairs and maintenance are performed in a timely manner.
15. The discharger shall comply with "Monitoring and Reporting Program No. 90-031", and future revisions thereto, as specified by the Regional Board's Executive Officer.
16. Prior to any modifications in this facility which would result in material change in the quality or quantity of wastewater treated or discharged, or any material change in the location of discharge, the discharger shall report all pertinent information in writing to the Regional Board.
17. Prior to any change in ownership or management of this operation, the discharger shall transmit a copy of this Board Order to the succeeding owner/operator, and forward a copy of the transmittal letter to the Regional Board.

IT IS FURTHER ORDERED that Board Order No. 85-028 be superseded by this Board Order.

I, Philip A. Gruenberg, Executive Officer, do hereby certify the foregoing is a full, true and correct copy of an Order adopted by the California Regional Water Quality Control Board, Colorado River Basin Region, on March 14, 1990.



Executive Officer

CALIFORNIA REGIONAL WATER QUALITY CONTROL BOARD
COLORADO RIVER BASIN REGION

MONITORING AND REPORTING PROGRAM NO. 90-031
FOR
MISSION SPRINGS WATER DISTRICT
DESERT CREST WASTEWATER TREATMENT PLANT
Southeast of Desert Hot Springs - Riverside County

Location of Discharge: NW¼, SE¼, Section 10, T3S, R5E, SBB&M

EFFLUENT MONITORING

Wastewater discharged from the treatment facilities shall be monitored for the following:

<u>Constituent</u>	<u>Unit</u>	<u>Type of Sample</u>	<u>Sampling Frequency</u>
20°C BOD ₅	mg/l	24-Hr. Composite	Monthly
Suspended Solids	mg/l	24-Hr. Composite	Monthly
Settleable Solids	ml/l	Grab	Daily ¹
Flow (Total Plant Effluent)	Gallons/Day	Flow Measurement	Daily ²

Sewage Sludge

The discharger shall report quarterly on the quantity, method, and location of sewage sludge discharged.

OPERATION AND MAINTENANCE

<u>Activity</u>	<u>Reporting</u>
To inspect and document any operational and maintenance problems by reviewing each unit process.	Yearly

¹ Once per weekday.

² For each day with average monthly flow calculated.

REPORTING

Monthly and daily monitoring reports shall be submitted to the Regional Board by the 15th day of the following month. Quarterly monitoring reports shall be submitted to the Regional Board by January 15, April 15, July 15, and October 15 of each year. Submit monitoring reports to:

California Regional Water Quality Control Board
Colorado River Basin Region
73-271 Highway 111, Suite 21
Palm Desert, CA 92260

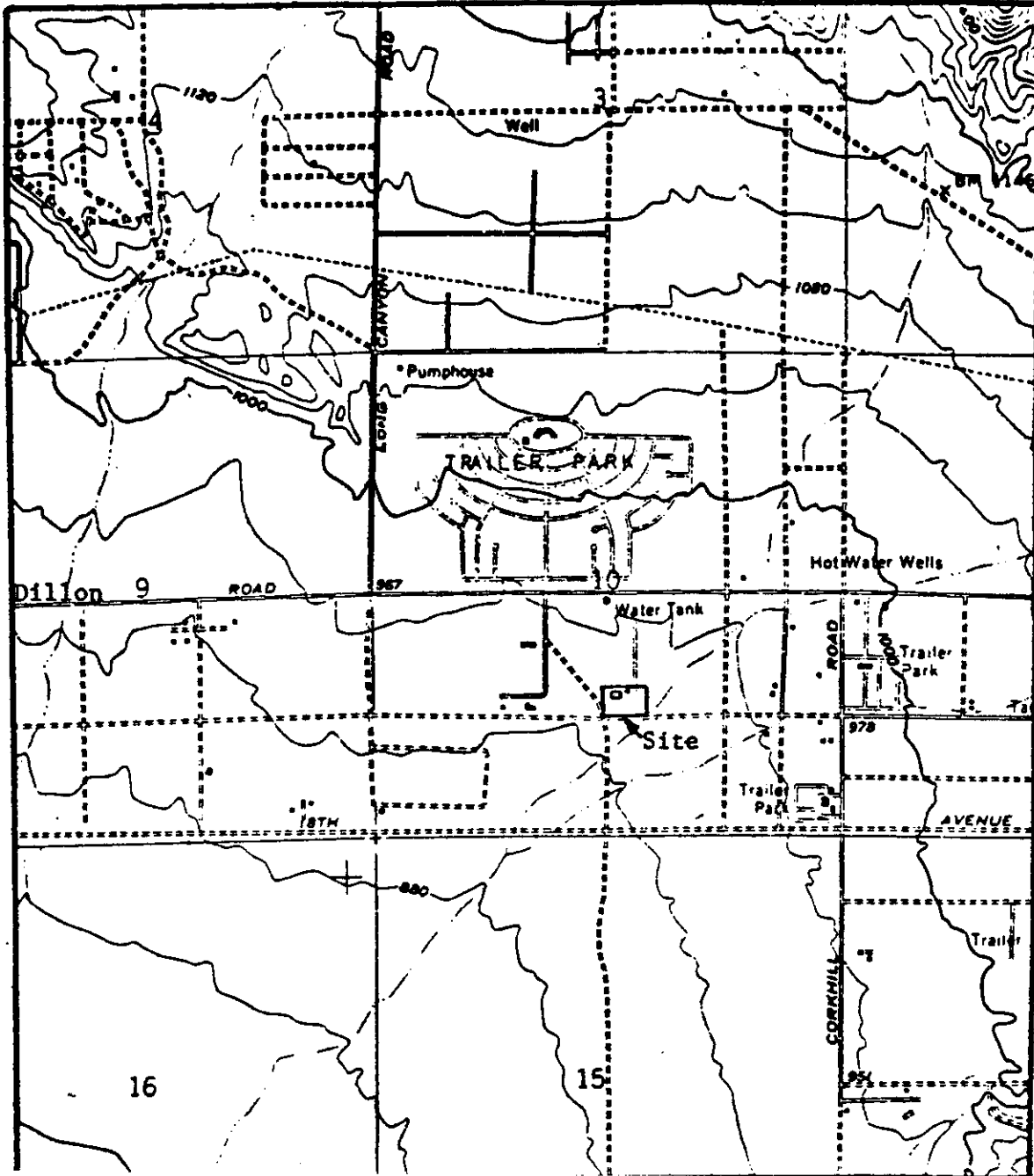
ORDERED BY:

Philip A. Gwendler
Executive Officer

March 14, 1990

Date

CALIFORNIA REGIONAL WATER QUALITY CONTROL BOARD -7



Scale:
1"=2,000'

SITE MAP

MISSION SPINGS WATER DISTRICT
DESERT CREST WASTEWATER TREATMENT PLANT
Southeast of Desert Hot Springs - Riverside County
NW $\frac{1}{4}$, SE $\frac{1}{4}$ of Section 10, T3S, R5E, SBB&M
USGS Seven Palms Valley 7.5 min. Topographic Map