

CALIFORNIA REGIONAL WATER QUALITY CONTROL BOARD  
COLORADO RIVER BASIN REGION

ORDER NO. 91-016

WASTE DISCHARGE REQUIREMENTS  
FOR  
BUREAU OF RECLAMATION SEWAGE TREATMENT PLANT  
Parker Dam Area - San Bernardino County

The California Regional Water Quality Control Board, Colorado River Basin Region, finds that:

1. U.S. Department of the Interior, Bureau of Reclamation (hereinafter also referred to as the discharger), P.O. Box 878, Parker Dam, California 92267, verified to be accurate the updated information given below on December 10, 1990.
2. The discharger is discharging a maximum of 23,000 gallons-per-day of treated effluent from an extended aeration, activated sludge-type, wastewater treatment plant into three infiltration basins for final disposal. The treatment plant and the basins are located in the NW $\frac{1}{4}$  of Section 10, T2N, R27E, SBB&M. These basins are located more than 400 feet laterally from the Colorado River. The treatment plant design capacity is 30,000 gpd of treated effluent. In addition to the domestic sanitary wastewater, a small quantity of backwash water from the community's water treatment plant is also periodically discharged to the wastewater treatment plant.
3. There are no domestic wells within 500 feet of the wastewater disposal facilities described in Finding No. 2, above.
4. During periods of maximum river flow, the wastewater disposal facilities are more than 400 feet from the high water line of the Colorado River.
5. The discharger removes about 500 pounds per year of stabilized sludge from the treatment plant and buries it in the ground on-site.
6. The Water Quality Control Plan for the Colorado River Basin Region of California designates the beneficial uses of ground and surface waters in this Region.
7. The beneficial uses of ground waters in the Colorado Hydrologic Unit are:
  - a. Municipal supply (MUN)
  - b. Industrial supply (IND)
  - c. Agricultural supply (AGR)
8. This discharge has been subject to waste discharge requirements adopted in Board Order No. 88-047.
9. The purpose of this Board Order is to update the waste discharge requirements of Board Order No. 88-047.

10. The Board has notified the discharger and all known interested agencies and persons of its intent to update waste discharge requirements for this discharge.
11. The Board in a public meeting heard and considered all comments pertaining to this discharge.
12. In accordance with Section 15301, Chapter 3, Title 14 of the California Code of Regulations, the issuance of these waste discharge requirements, which govern the operation of an existing facility involving negligible or no expansion of use beyond that previously existing, is exempt from the provisions of the California Environmental Quality Act (Public Resources Code, Section 21000 et seq.).

IT IS HEREBY ORDERED, that the discharger shall comply with the following:

A. Discharge Specifications

1. Treatment or disposal of wastes at this facility shall not cause pollution or nuisance as defined in Sections 13050(1) and 13050(m) of Division 7 of the California Water Code.
2. The five day 20°C biochemical oxygen demand of treatment plant effluent delivered to the three infiltration basins shall not exceed 40 mg/l.
3. There shall be no discharge of wastes from water softeners or any significant industrial wastes to the wastewater treatment plant.
4. The incremental increase of total dissolved solids concentration in the discharged effluent to the infiltration basins shall not exceed 400 mg/l above the flow weighted average of that concentration in the local water supply.
5. The maximum daily flow to the wastewater treatment plant shall not exceed 30,000 gallons-per-day.
6. Adequate protective works shall be provided to assure that a flood which would be expected to occur on a frequency of once in a 100-year period, would not erode or otherwise render portions of the treatment/disposal facilities inoperable.
7. Facilities shall be available to keep the plant in operation in the event of commercial power failure.

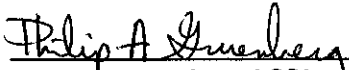
B. Provisions

1. The discharger shall comply with "Monitoring and Reporting Program No. 91-016", and future revisions thereto, as specified by the Regional Board's Executive Officer.
2. The discharger's facility shall be supervised and operated by persons possessing certification of appropriate grade pursuant to Section 3680, Chapter 14, Title 23 of the California Code of Regulations.
3. Prior to any modifications in this facility which would result in material change in the quality or quantity of wastewater treated or discharged, or any

material change in the location of discharge, the discharger shall report all pertinent information in writing to the Regional Board, and obtain revised requirements before any modifications are implemented.

IT IS FURTHER ORDERED that Board Order No. 88-047 be superseded by this Board Order.

I, Philip A. Gruenberg, Executive Officer, do hereby certify the foregoing is a full, true and correct copy of an Order adopted by the California Regional Water Quality Control Board, Colorado River Basin Region, on March 13, 1991.

  
\_\_\_\_\_  
Executive Officer

CALIFORNIA REGIONAL WATER QUALITY CONTROL BOARD  
COLORADO RIVER BASIN REGION

MONITORING AND REPORTING PROGRAM NO. 91-016  
FOR  
BUREAU OF RECLAMATION SEWAGE TREATMENT PLANT  
Parker Dam Area - San Bernardino County

Location of Discharge: NW¼ of Section 10, T2N, R27E, SBB&M

EFFLUENT MONITORING

Treatment plant effluent discharged to the infiltration basins shall be monitored for the following constituents:

<u>Constituent</u>	<u>Unit</u>	<u>Type of Sample</u>	<u>Sampling Frequency</u>
20°C BOD <sub>5</sub>	mg/l	6-Hr. Composite	Quarterly
Total Dissolved Solids	mg/l	Grab	Quarterly

SLUDGE MONITORING

The discharger shall report annually on the quantity, method and location of the treatment plant sludge disposal.

COMMUNITY WATER SUPPLY MONITORING

The water supply to the community shall be monitored for the following constituents:

<u>Constituent</u>	<u>Unit</u>	<u>Type of Sample</u>	<u>Sampling Frequency</u>
Total Dissolved Solids	mg/l	Grab	Annually

REPORTING

Quarterly monitoring reports shall be submitted to the Regional Board by January 15, April 15, July 15, and October 15 of each year. Annual monitoring reports shall be submitted by January 15 of the following year.

Submit reports to:

California Regional Water Quality Control Board  
Colorado River Basin Region  
73-271 Highway 111, Suite 21  
Palm Desert, CA 92260

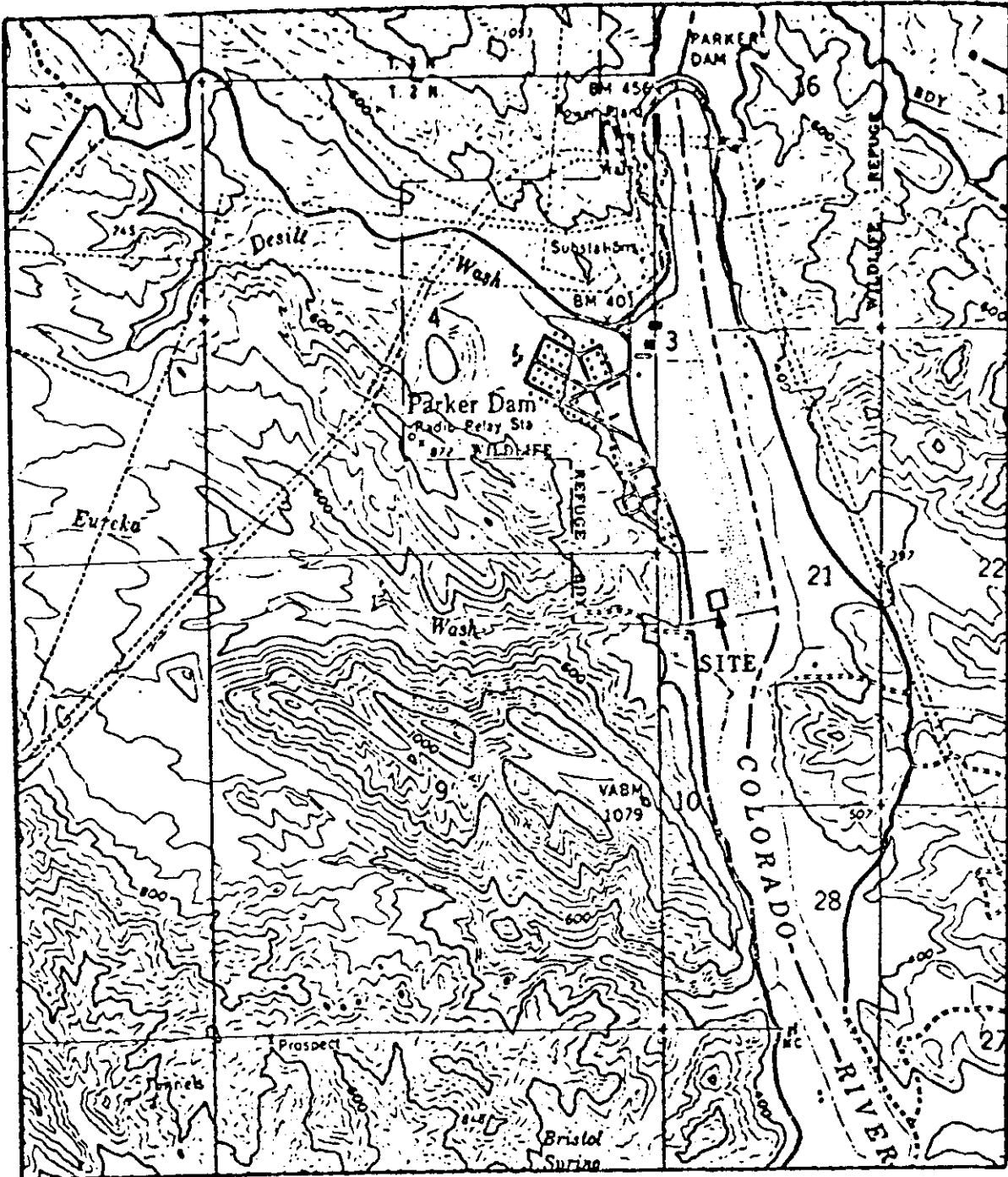
ORDERED BY:

Philip A. Guenberg  
Executive Officer

March 13, 1991

Date

CALIFORNIA REGIONAL WATER QUALITY CONTROL BOARD - 7



**SITE MAP**

BUREAU OF RECLAMATION SEWAGE TREATMENT PLANT  
Parker Dam Area - San Bernardino County  
NW $\frac{1}{4}$  of Section 10, T2N, R27E, SBB&M  
USGS Gene Wash 7.5 min. Topographic Map