

CALIFORNIA REGIONAL WATER QUALITY CONTROL BOARD  
COLORADO RIVER BASIN REGION

ORDER NO. 92-044

WASTE DISCHARGE REQUIREMENTS  
FOR  
CALIFORNIA DEPARTMENT OF TRANSPORTATION  
CACTUS CITY ROADSIDE REST  
East of Indio - Riverside County

The California Regional Water Quality Control Board, Colorado River Basin Region, finds that:

1. California Department of Transportation (hereinafter also referred to as the discharger), P.O. Box 81406, San Diego, CA 92186-5406, submitted a Report of Waste Discharge dated August 5, 1992.
2. The discharger is discharging a maximum total flow of 29,000 gallons-per-day and an average flow of 12,000 gallons-per-day of domestic sewage from the east and west bound facilities of a roadside rest complex on Interstate 10. The wastewater flows through septic tanks into a lined oxidation basin, which flows to an unlined infiltration/evaporation basin, located near the center of the E½ of Section 5, T6S, R10E, SBB&M.
3. The discharge from this roadside rest has been subject to waste discharge requirements adopted in Board Order No. 82-054.
4. There are no domestic wells within 500 feet of the sewage treatment and disposal basins. Water is supplied via a pipeline from the Colorado River Aqueduct.
5. In the event that the system fails to function properly, the discharger plans to close the facilities until repaired, since a back-up system is not available.
6. The Water Quality Control Plan for the Colorado River Basin Region of California was adopted on May 15, 1991, and designates the beneficial uses of ground and surface waters in this Region.
7. The beneficial use of ground water in the Shavers Hydrologic Subunit is:
  - a. Municipal supply (MUN).
8. The Board has notified the discharger and all known interested agencies and persons of its intent to update waste discharge requirements for this discharge.
9. The Board in a public meeting heard and considered all comments pertaining to this discharge.
10. In accordance with Section 15301, Chapter 3, Title 14 of the California Code of Regulations, the issuance of these waste discharge requirements, which

govern the operation of an existing facility involving negligible or no expansion of use beyond that previously existing, is exempt from the provisions of the California Environmental Quality Act (Public Resources Code, Section 21000 et seq.).

IT IS HEREBY ORDERED, that Board Order No. 82-054 is rescinded and in order to meet the provisions contained in Division 7 of the California Water Code and regulations adopted thereunder, the Discharger Shall comply with the following:

A. Discharge Specifications

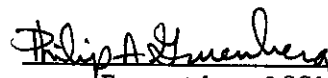
1. The treatment or disposal of wastes at this facility shall not cause pollution or nuisance as defined in Sections 13050(1) and 13050(m) of Division 7 of the California Water Code.
2. No wastewater other than domestic wastewater shall be discharged into the sewage disposal system described in Finding No. 2, above.
3. A minimum depth of freeboard of two (2) feet shall be maintained at all times in the basins.
4. Adequate measures shall be taken to assure that unauthorized persons are effectively excluded from contact with the wastewater.
5. Adequate measures shall be taken to assure that flood or surface drainage waters do not erode or otherwise render portions of the treatment and discharge facilities inoperable.
6. The discharger shall obtain prior written approval from the Regional Board's Executive Officer specifying location and method of disposal, before disposing of treated or untreated sludge, or similar solid waste materials. In addition, the discharger shall provide the results of any sludge analyses as specified by the Regional Board's Executive Officer.
7. There shall be no surface flow of wastewater away from the designated disposal areas.
8. Disposal by ponding shall be conducted in such a manner that there shall be no stranded or exposed sewage solids.
9. A surface aerobic environment shall be maintained in each basin.
10. There shall be no discharge, bypass, or flow of treated or untreated wastewater to surface waters.

B. Provisions

1. Prior to any modifications in this facility which would result in material change in the quality or quantity of wastewater treated or discharged, or any material change in the location of discharge, the discharger shall report all pertinent information in writing to the Regional Board, and obtain revised requirements before any modifications are implemented.

2. The discharger shall comply with "Monitoring and Reporting Program No. 92-044", and future revisions thereto, as specified by the Regional Board's Executive Officer.

I, Philip A. Gruenberg, Executive Officer, do hereby certify the foregoing is a full, true and correct copy of an Order adopted by the California Regional Water Quality Control Board, Colorado River Basin Region, on November 18, 1992.

  
\_\_\_\_\_  
Executive Officer

CALIFORNIA REGIONAL WATER QUALITY CONTROL BOARD  
COLORADO RIVER BASIN REGION

MONITORING AND REPORTING PROGRAM NO. 92-044  
FOR  
CALIFORNIA DEPARTMENT OF TRANSPORTATION  
CACTUS CITY ROADSIDE REST

Location of Discharge: Near the center of the E $\frac{1}{2}$  of Section 5, T6S, R10E, SBB&M

MONITORING

The discharger shall submit the following information in an annual status report:

1. Estimate total maximum daily flow (gpd) of sewage discharged to basins.
2. List any proposed changes during the coming year.
3. Explain any problems in the sewage treatment and disposal system during the preceding year.
4. The oxidation basin shall be sampled quarterly during March, June, September and December. The samples shall be analyzed for the following:

<u>Parameters and Constituent</u>	<u>Unit</u>	<u>Type of Sample</u>	<u>Reporting Frequency</u>
a. Total Dissolved Solids	mg/L <sup>1</sup>	Grab	Quarterly
b. Volatile Organics (EPA Methods 601 & 602)	$\mu$ g/L <sup>2</sup>	Grab	Annually <sup>3</sup>

The collection, preservation and holding times of all samples shall be in accordance with EPA-approved procedures. All analyses shall be conducted by a laboratory certified by the State Department of Health Services to perform the required analyses.

---

<sup>1</sup> mg/L : Milligram per Liter

<sup>2</sup>  $\mu$ g/L : Microgram per Liter

<sup>3</sup> Annual samples shall be collected during November

REPORTING

1. Quarterly monitoring reports shall be submitted to the Regional Board by January 15, April 15, July 15, and October 15 of each year.
2. Annual reports shall be submitted to the Regional Board by January 15th of each year.
3. The discharger shall arrange the data in tabular form so that the date, the constituents, and other specified information are readily discernible. The data shall be summarized in such manner as to clearly illustrate the facility is operating in compliance with waste discharge requirements.
4. Monitoring reports shall be certified, under penalty of perjury, to be true and correct, and shall contain the required information at the frequency designated in this monitoring program.
5. Submit reports to:

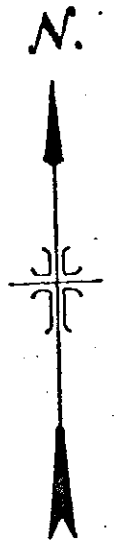
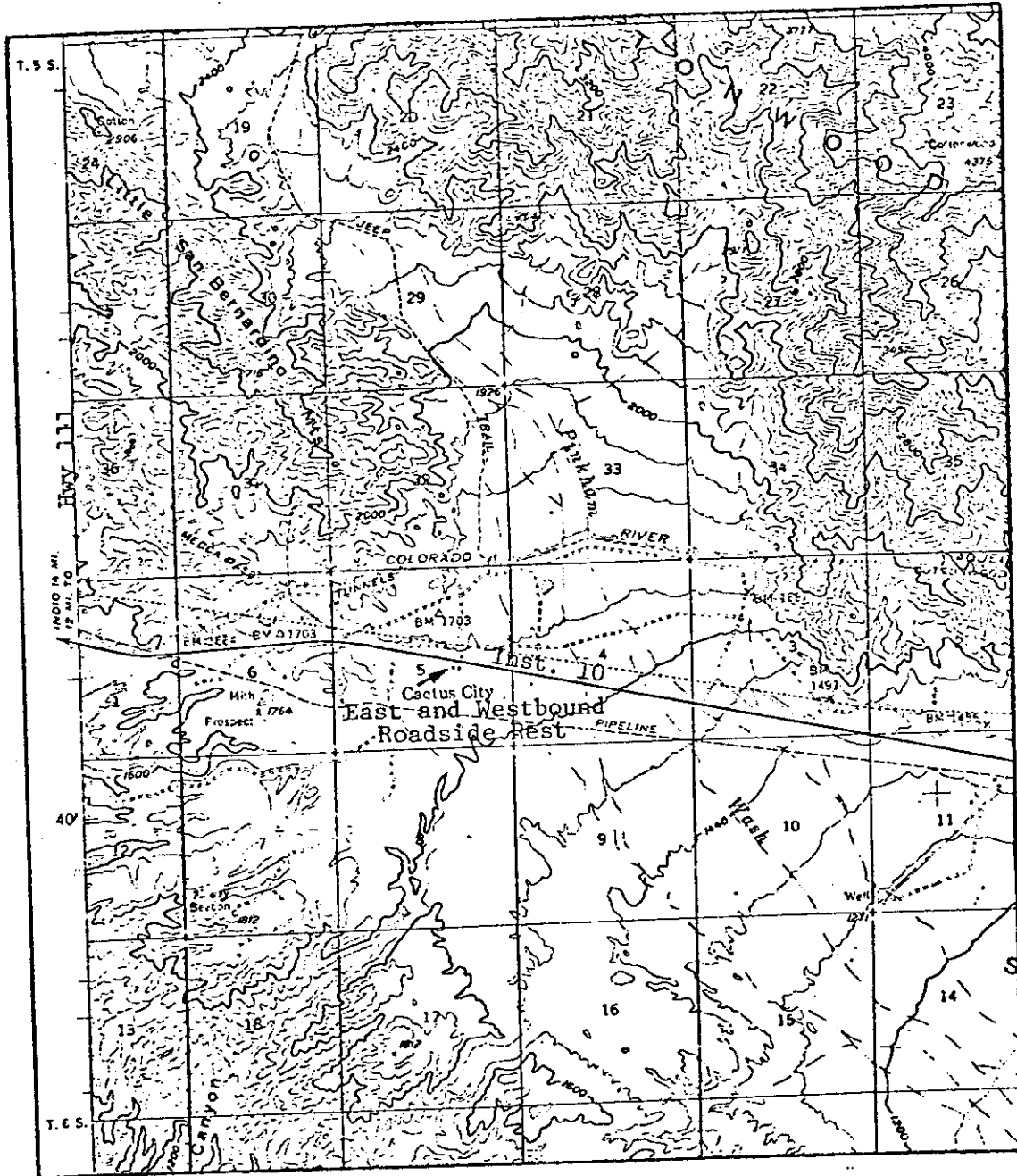
California Regional Water Quality Control Board  
Colorado River Basin Region  
73-720 Fred Waring Dr., Suite 100  
Palm Desert, CA 92260

ORDERED BY:

Philip A. Guenberg  
Executive Officer

November 18, 1992  
Date

CALIFORNIA REGIONAL WATER QUALITY CONTROL BOARD - 7



Scale:  
1"=1 mi

SITE MAP NO. 1  
CACTUS CITY ROADSIDE REST  
East of Indio - Riverside County  
Near the Center of the E 1/2 of Section 5, T6S, R10E, SBB&M  
USGS Cottonwood Springs 15 min. Topographic Map

Order No. 92-044

Eastbound  
Facilities

Sewer for Eastbound and  
Westbound Facilities

Existing  
Fence

N

Scale:  
1" = 50'

Oxidation  
Basin

Infiltration -  
Evaporation Basin

Possible Future  
Infiltration -  
Evaporation  
Basin

SITE MAP NO. 2  
CACTUS CITY ROADSIDE REST  
East of Indio - Riverside County

Order No. 92-044

