

**CALIFORNIA REGIONAL WATER QUALITY CONTROL BOARD
COLORADO RIVER BASIN REGION**

MONITORING AND REPORTING PROGRAM NO. R7-2007-0053 (Revision 1)
FOR
BORREGO WATER DISTRICT, OWNER/OPERATOR
RAMS HILL WASTEWATER TREATMENT FACILITY
Borrego Springs – San Diego County

Location of Discharge: E 1/2 of Section 23, T11S, R6E, SBB&M
(Shown in Attachment A)

MONITORING

1. The collection, preservation and holding times of all samples shall be in accordance with United States Environmental Protection Agency (USEPA) approved procedures. Unless otherwise approved by the Regional Water Board Executive Officer, all analyses shall be conducted by a laboratory certified by the California Department of Public Health, except Dissolved Oxygen and pH, which may be performed by WWTF staff using EPA approved methods. All analyses shall be conducted in accordance with the latest edition of "Guidelines Establishing Test Procedures for Analysis of Pollutants" (40CFR Part 136), promulgated by the USEPA.
2. All monitoring instruments and devices used by the discharger to fulfill the prescribed monitoring program shall be properly maintained and calibrated as necessary to ensure their continued accuracy. In the event that continuous monitoring equipment is out of service for period greater than 24-hours, the Discharger shall obtain representative grab samples each day the equipment is out of service. The Discharger shall correct the cause(s) of failure of the continuous monitoring equipment as soon as practicable. The Discharger shall report the period(s) during which the equipment was out of service and if the problem has not been corrected, shall identify the steps which the Discharger is taking or proposes to take to bring the equipment back into service and the schedule for these actions.
3. Samples shall be collected at the location specified in the Permit and in this Program. If no location is specified, sampling shall be conducted at the most representative sampling point available.

INFLUENT MONITORING

At a minimum, wastewater influent shall be monitored for the following constituents from samples collected at the specified frequency:

October through March (high-season)				
Constituents	Units	Type of Sample	Sampling Frequency	Reporting Frequency
Flow	gpd ¹	Flow Measurement	Daily ²	Monthly
20°C BOD ₅ ³	mg/L ⁴	Grab	Monthly	Monthly
Suspended Solids	mg/L	Grab	Monthly	Monthly
¹ Gallons per day ² Reported for each day with average monthly flow ³ 5-day biochemical oxygen demand at 20 °C ⁴ Milligrams per liter				

Monitoring and Reporting Program
 Borrego Water District
 Rams Hill WWTF

April through September (off-season)				
Constituents	Units	Type of Sample	Sampling Frequency	Reporting Frequency
Flow	gpd ¹	Flow Measurement	Daily ²	Quarterly
20°C BOD ₅ ³	mg/L ⁴	Grab	Quarterly	Quarterly
Total Suspended Solids	mg/L	Grab	Quarterly	Quarterly
¹ Gallons per day ² Reported for each day with average monthly flow ³ 5-day biochemical oxygen demand at 20 °C ⁴ Milligrams per liter				

EFFLUENT MONITORING

Effluent samples shall be representative of the discharge, and collected immediately before discharge into disposal ponds. The time the grab sample is collected shall be recorded. At a minimum, wastewater effluent shall be monitored for the following constituents from samples collected at the specified frequency:

October through March (high-season)				
Constituent	Units	Type of Sample	Sampling Frequency	Reporting Frequency
Total Suspended Solids	mg/L	Grab	2/month ¹	Monthly
20 ° C BOD ₅	mg/L	Grab	2/month	Monthly
Settleable Solids	mg/L	Grab	2/month	Monthly
Total Nitrogen	mg/L	Grab	2/month	Monthly
Total Dissolved Solids	mg/L	Grab	2/month	Monthly
pH	pH units	Grab	2/month	Monthly
VOCs ²	µg/L ³	Grab	Annually	Annually
¹ 2 samples per month with at least 2 weeks between samples ² Volatile Organic Compounds testing is to be accomplished using USEPA Test Method 601 and 602, or 624. ³ Micrograms per liter.				

April through September (off-season)				
Constituent	Units	Type of Sample	Sampling Frequency	Reporting Frequency
Total Suspended Solids	mg/L	Grab	Quarterly	Quarterly
20 ° C BOD ₅	mg/L	Grab	Quarterly	Quarterly
Settleable Solids	mg/L	Grab	Quarterly	Quarterly
Total Nitrogen	mg/L	Grab	Quarterly	Quarterly
Total Dissolved Solids	mg/L	Grab	Quarterly	Quarterly
pH	pH units	Grab	Quarterly	Quarterly

DISPOSAL PONDS MONITORING

A permanent marker shall be placed in each pond calibrated to indicate the water level at design capacity, and available operational freeboard. The Discharger shall inspect ponds in use at least weekly, and document visual observations in a bound log book. Observations shall indicate:

- a. The occurrence and location of weeds within the pond, or along the bank;
- b. The occurrence and location of dead algae, vegetation, scum, or debris on the pond surface;
- c. Burrowing animals or insects; and
- d. Color of the pond/cell.

A copy of the entries shall be submitted with the next self-monitoring report. If corrective action is required, the self-monitoring report shall include a description of actions taken or scheduled. At a minimum, wastewater ponds shall be monitored for the following constituents from samples collected at the specified frequency:

October through March (high-season)				
Constituent	Unit	Type of Sample	Sampling Frequency	Reporting Frequency
Dissolved Oxygen ¹	mg/L	Grab	2/month	Monthly
pH	pH Units	Grab	2/month	Monthly
Freeboard	Feet	Observation	2/month	Monthly
¹ Samples shall be collected from each pond opposite the inlet, at a depth of one foot or less. Samples shall be collected between 8:00 A.M. and 9:00 A.M.				

April through September (off-season)				
Constituent	Unit	Type of Sample	Sampling Frequency	Reporting Frequency
Dissolved Oxygen ¹	mg/L	Grab	Quarterly	Quarterly
pH	pH Units	Grab	Quarterly	Quarterly
Freeboard	Feet	Observation	Quarterly	Quarterly
¹ Samples shall be collected from each pond opposite the inlet, at a depth of one foot or less. Samples shall be collected between 8:00 A.M. and 9:00 A.M.				

WATER SUPPLY TO THE COMMUNITY

At a minimum, supply water shall be monitored for the following constituents from samples collected at the specified frequency:

Constituents	Units	Sampling Frequency	Reporting Frequency
Standard Minerals ¹	mg/l	Annually	Annually
pH	pH units	Annually	Annually
¹ At a minimum, Standard Minerals shall include: total dissolved solids, calcium, chloride, fluoride, iron, magnesium, manganese, nitrate, potassium, sodium, sulfate, barium, total alkalinity (including alkalinity series), and hardness.			

GROUNDWATER MONITORING

At a minimum, groundwater shall be monitored for the following constituents from samples collected at the specified frequency:

Constituent	Units	Type of Sample	Sampling Frequency	Reporting Frequency
Standard Minerals ¹	mg/L	Grab	Annually	Annually
Total Nitrogen	mg/L	Grab	Annually	Annually
VOCs	mg/L	Grab	Annually	Annually
pH	pH Units	Grab	Annually	Annually

¹ At a minimum, Standard Minerals shall include: total dissolved solids, calcium, chloride, fluoride, iron, magnesium, manganese, nitrate, potassium, sodium, sulfate, barium, total alkalinity (including alkalinity series), and hardness.

SLUDGE MONITORING

Sludge that is generated at the WWTF shall be sampled and analyzed for the following:

Constituent	Units	Type of Sample	Sampling Frequency	Reporting Frequency
Arsenic	mg/kg	Composite	Annually	Annually
Cadmium	mg/kg	Composite	Annually	Annually
Copper	mg/kg	Composite	Annually	Annually
Lead	mg/kg	Composite	Annually	Annually
Mercury	mg/kg	Composite	Annually	Annually
Molybdenum	mg/kg	Composite	Annually	Annually
Nickel	mg/kg	Composite	Annually	Annually
Selenium	mg/kg	Composite	Annually	Annually
Zinc	mg/kg	Composite	Annually	Annually
Fecal Coliform	MPN/gram	Composite	Annually	Annually

¹ Milligrams per kilogram

² Most Probable Number per gram

On an annual basis, the Discharger shall submit a monitoring report describing current and proposed sludge disposal methods, and quantity of sludge disposed of in the previous calendar year. If no sludge is disposed of during the year being reported, the Discharger shall state "No Sludge Removed" in the annual monitoring report. If more than one method of sludge disposal was used, the report shall quantify sludge disposal by method:

1. For **landfill disposal**, include: (1) the Board Order number for the facility Waste Discharge Requirements, (2) the waste classification of the landfill(s), and (3) the name and location of facilities receiving sludge.

Monitoring and Reporting Program
Borrego Water District
Rams Hill WWTF

2. For **land application**, include: (1) the location of the site(s), (2) the Board Order number for the facility Waste Discharge Requirements, (3) a technical report analyzing application rates and procedures in relation to the Department of Health Services *Manual of Good Practices for Landspreading of Sewage Sludge*, and EPA's *Process Design Manual for Land Application of Municipal Sludges*, and Title 23, CCR, Section 2511(f), and (4) for subsequent uses of the land.
3. For **incineration**, include: (1) the name and location of sludge incineration site(s), (2) the Board Order number for the facility Waste Discharge Requirements, (3) the method for disposing ash, and (4) the name and location of facilities receiving ash (if applicable).
4. For **composting**, include: (1) the location of the site(s), and (2) the Board Order number for the facility Waste Discharge Requirements.

REPORTING

1. The Discharger shall inspect and document any operation/maintenance problems by inspecting each unit process. In addition, calibration of flow meters and equipment shall be performed in a timely manner and documented. Operation and Maintenance reports shall be submitted to the Regional Water Board Office annually.
2. The discharger shall arrange the data in tabular form so that the specified information is readily discernible. The data shall be summarized in such a manner as to clearly illustrate whether the Facility is operating in compliance with WDRs. Where appropriate, the Discharger shall include supporting calculations (e.g., for monthly averages).
3. Records of monitoring information shall include:
 - a. The date, exact place, and time of sampling or measurement(s);
 - b. The individual(s) who performed the sampling or measurement(s);
 - c. The date the analysis was performed;
 - d. The individual(s) performing the analysis;
 - e. The analytical technique or method used; and
 - f. The result of each analysis.
4. The results of any analysis obtained more frequently than required by this Board Order at the locations specified in the Monitoring and Reporting Program, shall be reported to the Regional Board.
5. Monitoring reports shall be certified under penalty of perjury to be true and correct, and shall contain the required information at the frequency designated in this monitoring report.
6. Each report shall contain the following statement:

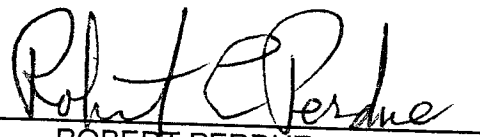
"I declare under the penalty of law that I have personally examined and am familiar with the information submitted in this document, and that based on my inquiry of those individuals immediately responsible for obtaining the information, I believe that the information is true, accurate, and complete. I am aware that there are significant penalties for submitting false information, including the possibility of a fine and imprisonment for knowing violations".

Monitoring and Reporting Program
Borrego Water District
Rams Hill WWTF

7. The Monitoring and Reporting Program, and other information requested by the Regional Board, shall be signed by a principal executive officer or ranking elected official.
8. A duly authorized representative of the Discharger may sign the documents if:
 - a. The authorization is made in writing by the person described above;
 - b. The authorization specifies an individual or person having responsibility for the overall operation of the regulated disposal system; and
 - c. The written authorization is submitted to the Regional Water Board Executive Officer.
9. Reporting of any failure at the Facility (wastewater treatment plant, and collection and disposal system) shall be as described in Provision No. 19. Results of any analysis performed as a result of a failure of the Facility shall be provided within ten (10) days after collection of the samples.
10. The discharger shall attach a cover letter to the Self-Monitoring Report. The information contained in the cover letter shall clearly identify violations of the WDRs, discuss corrective actions taken or planned, and propose a time schedule for planned corrective actions. Identified violations shall include a description of the requirement that was violated and a description of the violation.
11. Daily, weekly and monthly monitoring reports shall be submitted to the Regional Board by the 15th day of the following month. Quarterly monitoring reports shall be submitted to the Regional Board by January 15th, April 15th, July 15th, and October 15th of each year. Annual monitoring reports shall be submitted to the Regional Board by January 15th of each year.
12. The Discharger shall submit monitoring reports to:

California Regional Water Quality Control Board
Colorado River Basin Region
73-720 Fred Waring, Suite 100
Palm Desert, CA 92260

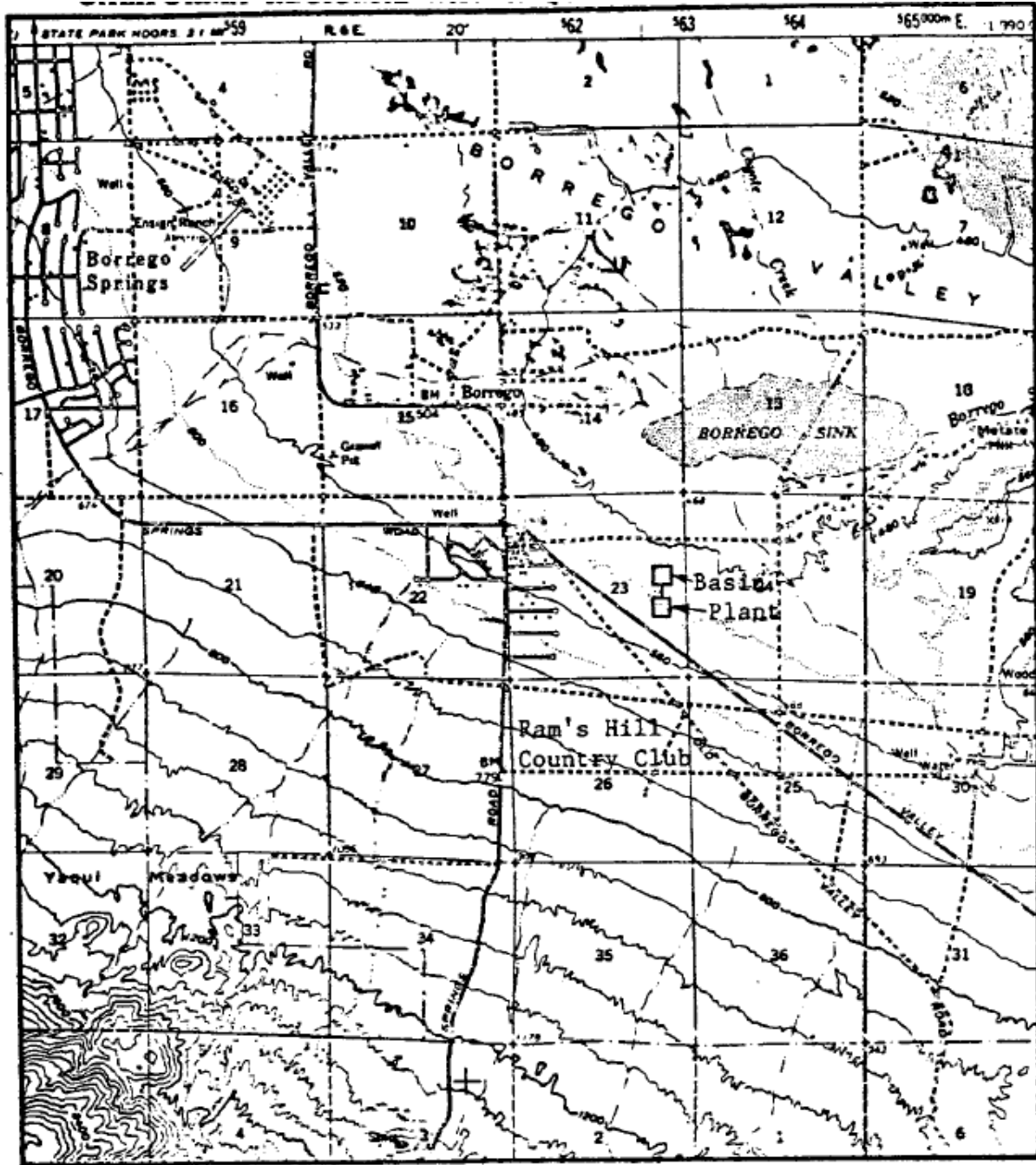
Ordered by: _____


ROBERT PERDUE
Executive Officer

July 5, 2012

Date

CALIFORNIA REGIONAL WATER QUALITY CONTROL BOARD
COLORADO RIVER BASIN REGION



Scale:
1"=1 mi.