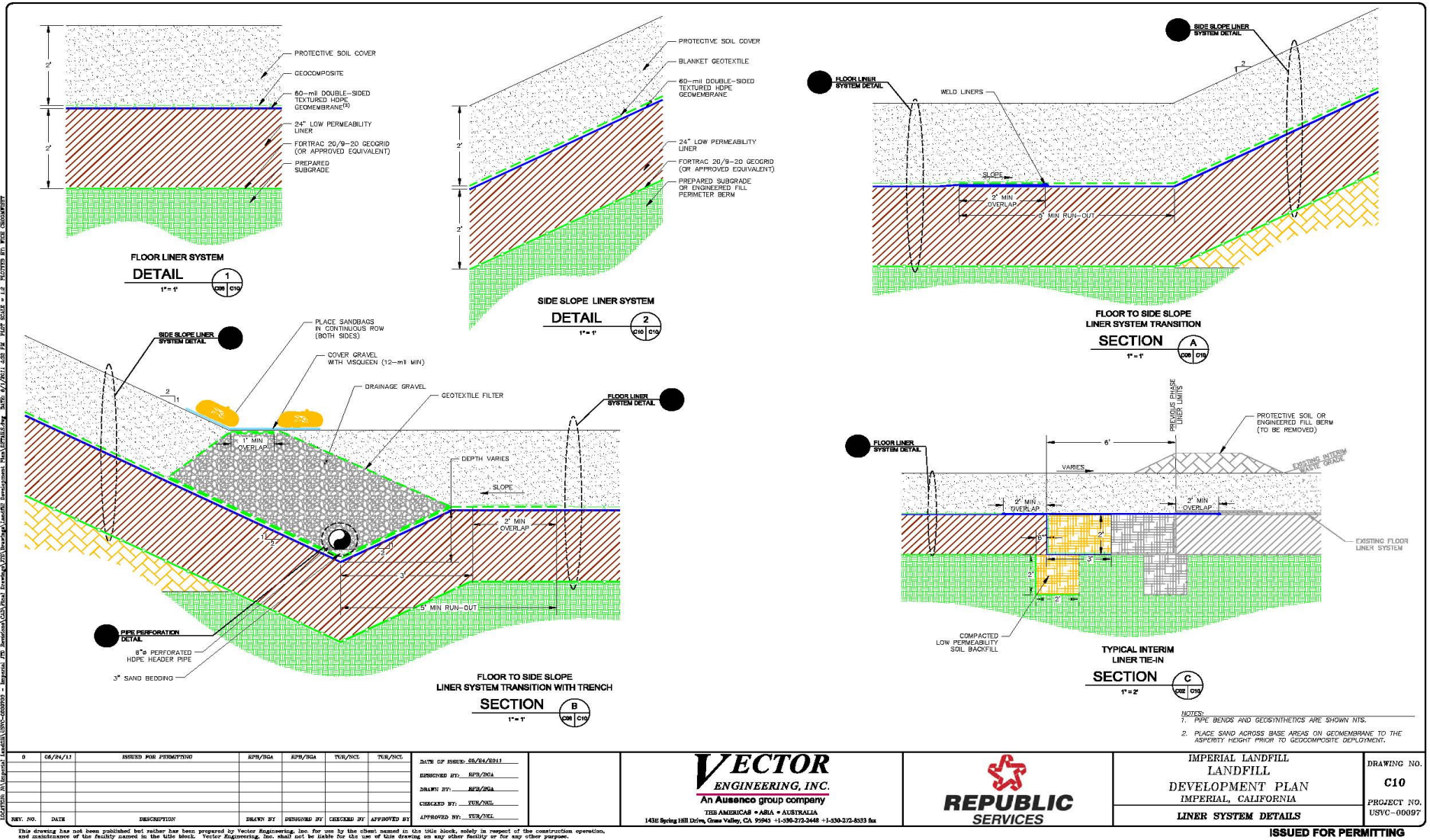


CALIFORNIA REGIONAL WATER QUALITY CONTROL BOARD



REV. NO.	DATE	DESCRIPTION	DRAWN BY	DESIGNED BY	CHECKED BY	APPROVED BY
0	06/24/11	ISSUED FOR PERMITTING	REP/SGA	REP/SGA	TUR/STC	TUR/STC

DATE OF ISSUE: 06/24/2011
DESIGNED BY: REP/SGA
DRAWN BY: REP/SGA
CHECKED BY: TUR/STC
APPROVED BY: TUR/STC

VECTOR ENGINEERING, INC.
An Ausenco group company
1436 Spring Hill Drive, Grass Valley, CA 95945 | 530-272-2448 | 1-800-272-8333 fax

REPUBLIC SERVICES

IMPERIAL LANDFILL
LANDFILL
DEVELOPMENT PLAN
IMPERIAL, CALIFORNIA
LINER SYSTEM DETAILS

DRAWING NO. **C10**
PROJECT NO. USVC-00097

This drawing has not been published but rather has been prepared by Vector Engineering, Inc. for use by the client named in the title block, solely in respect of the construction operation, and maintenance of the facility named in the title block. Vector Engineering, Inc. shall not be liable for the use of this drawing on any other facility or for any other purpose.

ISSUED FOR PERMITTING

ATTACHMENT C

ALLIED IMPERIAL LANDFILL Liner Design Board Order R7-2011-0040