



**Self-Help
Enterprises**

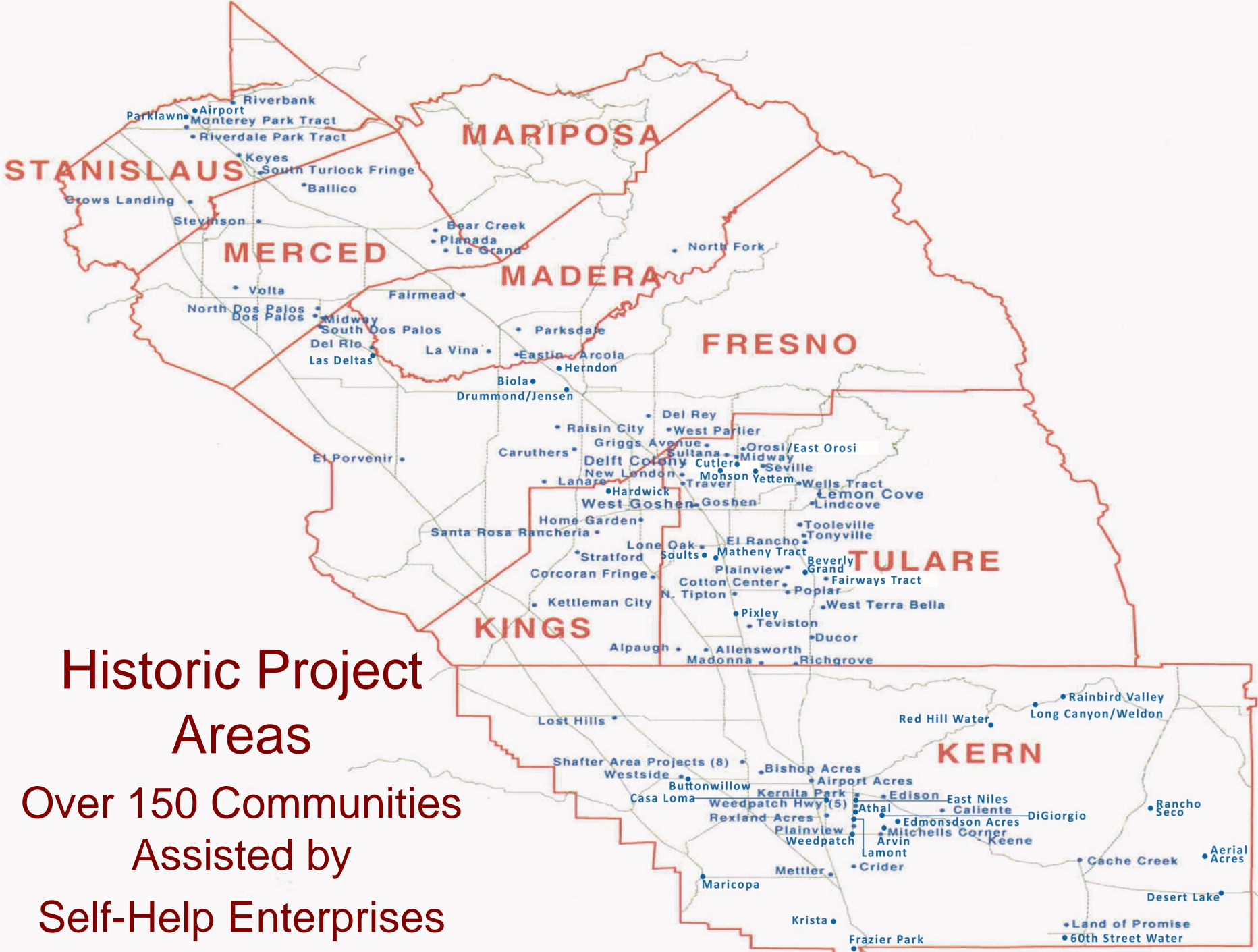
Mission Statement:

Working together with
low-income families to
build and sustain healthy
homes and communities.

Water and Wastewater Project Training and Technical Assistance in San Joaquin Valley Counties



November 13, 2017 Presentation
SWRCB & CPUC Joint Consolidation Workshop
by
Self-Help Enterprises



**Historic Project
Areas**

**Over 150 Communities
Assisted by
Self-Help Enterprises**

Project Planning and Development

- Preplanning
- Funding Assistance, Application preparation
- Funding Administration
- Assist DAC with procurement of Professional Services
- Community Outreach and Education
- Consolidation and Regionalization



TMF Training

- Board Training
- Rate Studies and Prop 218
- Board and Staff Capacity Building



Private Water Well Surveys

- Water Quality Sampling and Analyses
- Sounding to determine depth to water



Income Surveys

- Conduct Surveys
- Prepare Reports



Septic System Surveys

- Conduct Surveys
- Prepare Reports
- If Significant Problems, Assess interest in community-wide solution



Subcontract Professional Services

- Engineering: Feasibility Studies; Preliminary Engineering Reports; CEQA and NEPA Environmental Review and Documents; "Simple and Inexpensive" Design
- Environmental Consultants: Biological and Cultural Resource Surveys; CEQA and NEPA Environmental Review and Documents
- Hydrogeologists
- Legal Assistance: Entity Formation; Other eligible legal matters
- Administrative and managerial consultants



Self-Help Enterprises has assisted over 60 communities in consolidating systems for water and sewer service. Current efforts could result in consolidation of infrastructure for an additional 50 communities.

Previous Consolidations Kern County

Smaller Systems	Service	Small System Type	Consolidating System
Airport Acres	Water	MWC	California Water Service
Cache Creek	Water	Association	Mojave PUD
Casa Loma MWC	Water	MWC	California Water Service
Doney Street	Water	MWC	East Niles CSD
Edison	Water	MWC	East Niles CSD
Edison	Sewer	was septic	East Niles CSD
Edmundson Acres	Water	MWC	Arvin CSD
Kernita Park	Water	MWC	East Niles CSD
<i>Mitchells Corner Project</i>			
<i>Mitchells Corner</i>	Water	MWC	Arvin CSD
<i>Kern Autism Center</i>	Water	Private	Arvin CSD
<i>Marchelle WS</i>	Water	Private	Arvin CSD
North Park	Water	MWC	City of Shafter
North Shafter	Water	Private	City of Shafter
North Park/ North Shafter	Sewer	was septic systems	City of Shafter
Panama Lane	Water	Private	City of Bakersfield
Plainview	Water	PUD	Lamont PUD
Rexland Acres	Sewer	CSA	Kern County JPA
<i>S Shafter Colonias Project</i>			
<i>Mexican Colony</i>	Water	MWC	City of Shafter
<i>Thomas Lane</i>	Water	Association	City of Shafter
<i>Smith's Corner</i>	Water	Private	City of Shafter
<i>Burbank</i>	Water	Association	City of Shafter
<i>Cherokee Strip</i>	Water	Association	City of Shafter
<i>SW Shafter Project</i>			
<i>Carrillo WS</i>	Water	Private	City of Shafter
<i>7th Day Adventist</i>	Water	School	City of Shafter
<i>Dirksen WS</i>	Water	Private	City of Shafter
<i>Community Well</i>	Water	MWC	City of Shafter
<i>Poplar Ave</i>	Water	MWC	City of Shafter
<i>B, H, F, & T Well</i>	Water	Private	City of Shafter
<i>Ringer Well</i>	Water	Private	City of Shafter
<i>Weedpatch HWY Project</i>			
<i>Choate Street</i>	Water	MWC	East Niles CSD
<i>Doney Street</i>	Water	MWC	East Niles CSD
<i>Muller</i>	Water	MWC	East Niles CSD
<i>Comanche WS</i>	Water	Association	East Niles CSD
<i>Redbank Water System</i>	Water	Association	East Niles CSD
<i>Westside Project</i>			
<i>McIntosh WS</i>	Water	Private	Buttonwillow CWD
<i>Watkins WS</i>	Water	Private	Buttonwillow CWD
<i>Williams WS</i>	Water	Private	Buttonwillow CWD

Tulare County



Previous Consolidations Tulare County

Smaller Systems	Service	Small System	Consolidating System
Cameron Creek Colony	Water	were private wells	City of Farmersville
Central Water System	Water	Private	Plainview MWC
East Orosi	Sewer	CSD	Cutler Orosi Wastewater JPA
El Rancho	Sewer	CSA	City of Lindsay
Fairway Tract	Water	MWC	City of Porterville
Goshen	Sewer	CSD	City of Visalia
Griggs Avenue	Water	Association	City of Dinuba
Lone Oak	Water	MWC	City of Tulare
Madonna	Water	MWC	City of Delano
Midway (Orosi)	Water	were private wells	Orosi PUD
Midway (Orosi)	Sewer	was septic	Orosi PUD
Patchtown	Water	were private wells	Orosi PUD
Patchtown	Sewer	were septic systems	Orosi PUD
Seville	Sewer	CSA	Cutler Orosi Wastewater JPA
Sultana	Sewer	CSD	Cutler Orosi Wastewater JPA
Wells Tract	Water	CSA	City of Woodlake
Wells Tract	Sewer	CSA	City of Woodlake
Western Sky MHP	Water	Private	City of Dinuba
Yettem	Sewer	CSA	Cutler Orosi Wastewater JPA

Consolidations In the Works

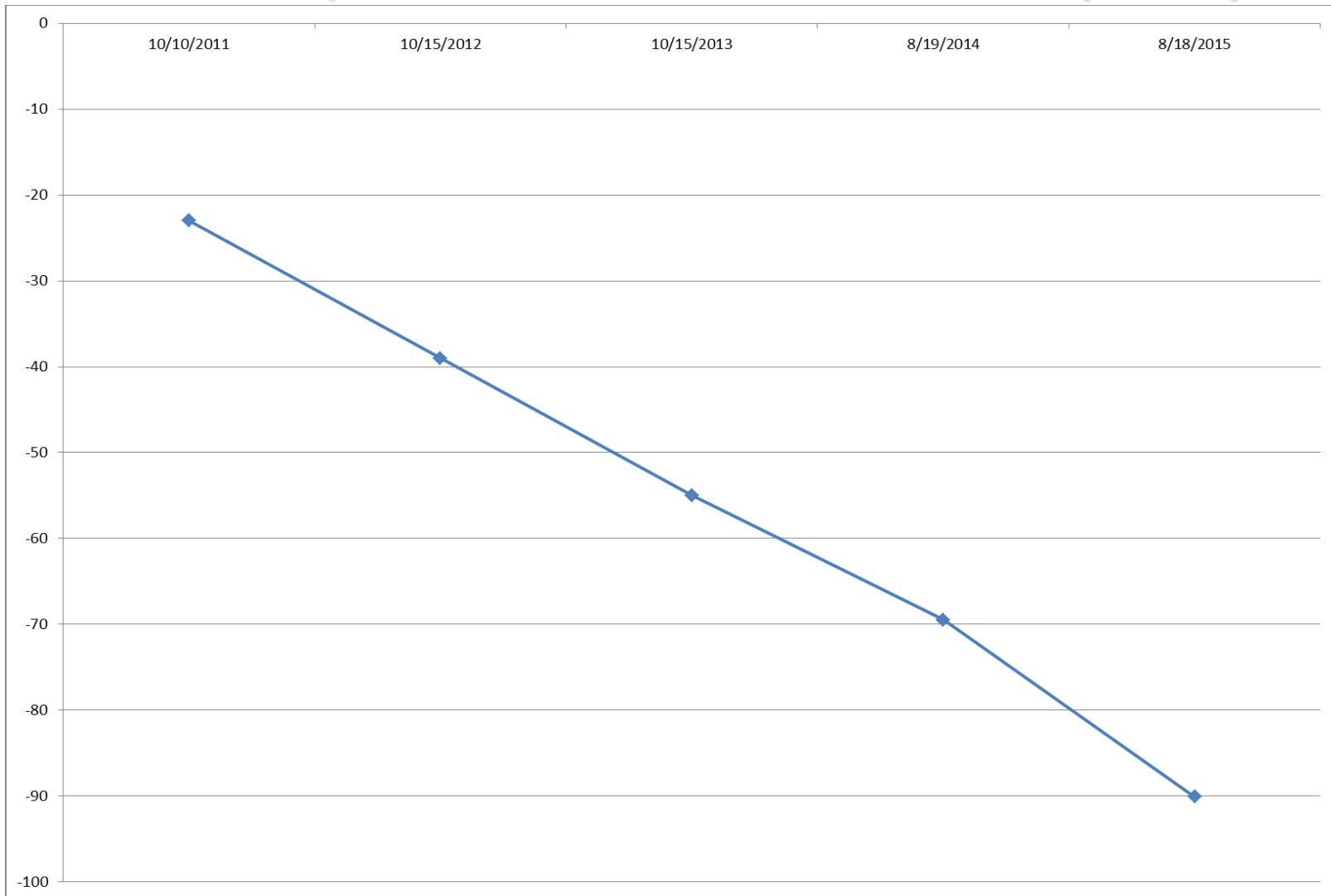
Akin	Tulare	Water	Private	City of Porterville
Avenue 322	Tulare	Water	private wells	California Water Service -Visalia System
Beran Way	Fresno	Water	private wells	Fresno County Service Area
Beverly Grand	Tulare	Water	MWC	City of Porterville
Chinowth	Tulare	Water	Private	California Water Service -Visalia System
East Vandalia	Tulare	Water	Private	City of Porterville
El Rancho	Tulare	Water	LSID	City of Lindsay
Kettleman City School	Kings	Water	School	Kettleman City CSD
Las Deltas	Fresno	Water	MWC	City of Firebaugh
Matheny Tract	Tulare	Water	MWC	City of Tulare
Monson	Tulare	Water	private wells	Sultana CSD
Monterey Park Tract	Stanislaus	Water	CSD	City of Ceres
North Burnett Road	Tulare	Water	Association	Tipton CSD
Old Liberty School Area	Tulare	Water	private wells	California Water Service -Visalia System
Orange Center School	Fresno	Water	School	City of Fresno
Orange Center Residential Area	Fresno	Water	private wells	City of Fresno
Perry Colony	Fresno	Water	private wells	Fresno County Service Area -Raisin City
Rodriguez Labor Camp	Tulare	Water	Private	Richgrove CSD
Seville	Tulare	Water	County Receiver	Yettem Water System
Soults	Tulare	Water	MWC	City of Tulare
Tooleville	Tulare	Water	MWC	City of Exeter
Weedpatch	Kern	Sewer	Lamont PUD	Lamont PUD
West Goshen MWC	Tulare	Water	MWC	Goshen System
Yettem	Tulare	Water	CSA	Seville

Potential Future Consolidations

Allensworth - Alpaugh	Tulare	Water	CSD	District/Allensworth CSD
Athal	Kern	Water	MWC	East Niles CSD
East Orosi	Tulare	Water	CSD	Orosi PUD
Easton	Fresno	Water	CSD	Schools and potentially others
Easton	Fresno	Sewer	CSD	Schools and potentially others
El Monte MHP	Tulare	Water	Private	City of Dinuba
El Porvenir	Fresno	Water	CSA	Cantua Creek CSA
Hardwick	Kings	Water	private wells	Hardwick
Lemon Cove	Tulare	Water	Sanitary District	Sequoia Union School
Matheny Tract	Tulare	Sewer	septic systems	City of Tulare
Monson	Tulare	Water	use private wells	Sultana CSD
North Burnett Road	Tulare	Sewer	Association	Tipton CSD
North Weedpatch HWY Project				
<i>East Wilson Road</i>	Kern	Water	MWC	East Niles CSD
<i>San Joaquin Estates</i>	Kern	Water	MWC	East Niles CSD
<i>Wilson Road</i>	Kern	Water	MWC	East Niles CSD
<i>Country Estates</i>	Kern	Water	Private	East Niles CSD
Plainview	Tulare	Sewer	septic systems	Might be City of Lindsay
Son Shine/DiGiorgio	Kern	Water	Private	Arvin CSD
South Shafter Project				
<i>Thomas Lane</i>	Kern	Sewer	septic systems	City of Shafter
<i>Smith's Corner</i>	Kern	Sewer	septic systems	City of Shafter
<i>Burbank</i>	Kern	Sewer	septic systems	City of Shafter
<i>Cherokee Strip</i>	Kern	Sewer	septic systems	City of Shafter
<i>Southwest Shafter</i>	Kern	Sewer	septic systems	City of Shafter
Tonyville	Tulare	Sewer	CSA	City of Lindsay
Tract 92	Tulare	Water	CSD	California Water Service CO.
Weldon Area Water Systems				
<i>Rainbird Valley</i>	Kern	Water	MWC	Uncertain
<i>Long Canyon</i>	Kern	Water	Private	Uncertain
<i>Tradewinds</i>	Kern	Water	MWC	Uncertain
<i>Bella Vista</i>	Kern	Water	MWC	Uncertain
<i>KOA</i>	Kern	Water	Private	Uncertain
<i>South Fork Women's Club</i>	Kern	Water	Private	Uncertain

Cameron Creek Colony

Cameron Creek Colony Depth to Ground Water (feet)



High turn out at Community Meetings



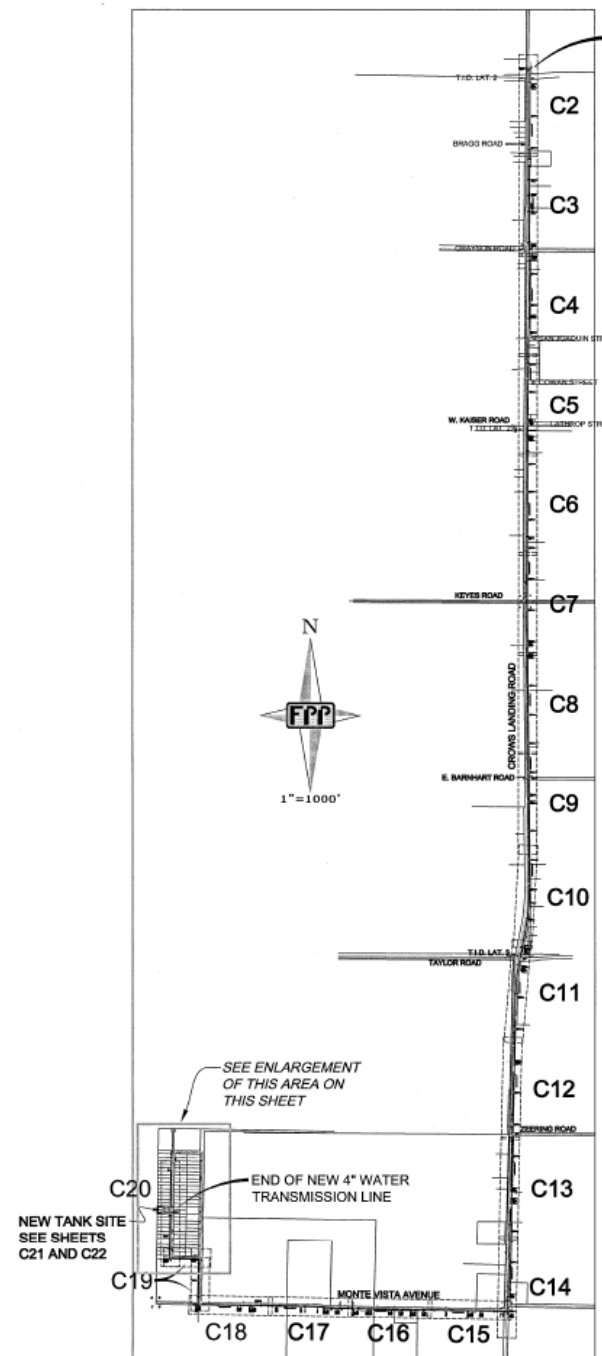
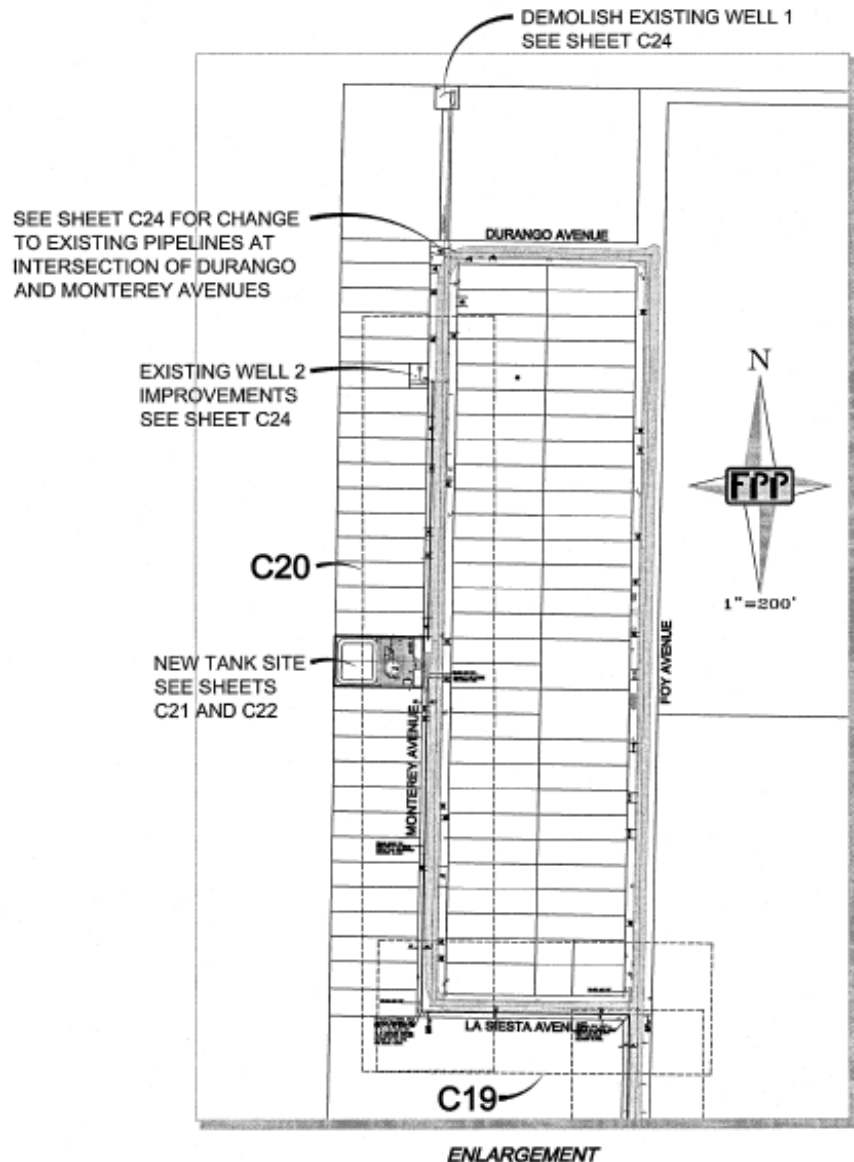
With Emergency Funding the Water Distribution System was installed in 5 months



Cameron Creek Homes are now connected to the System

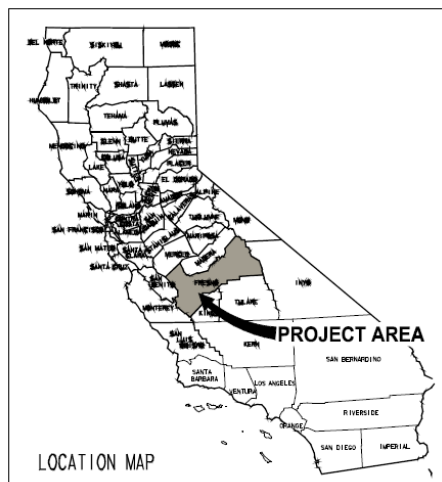
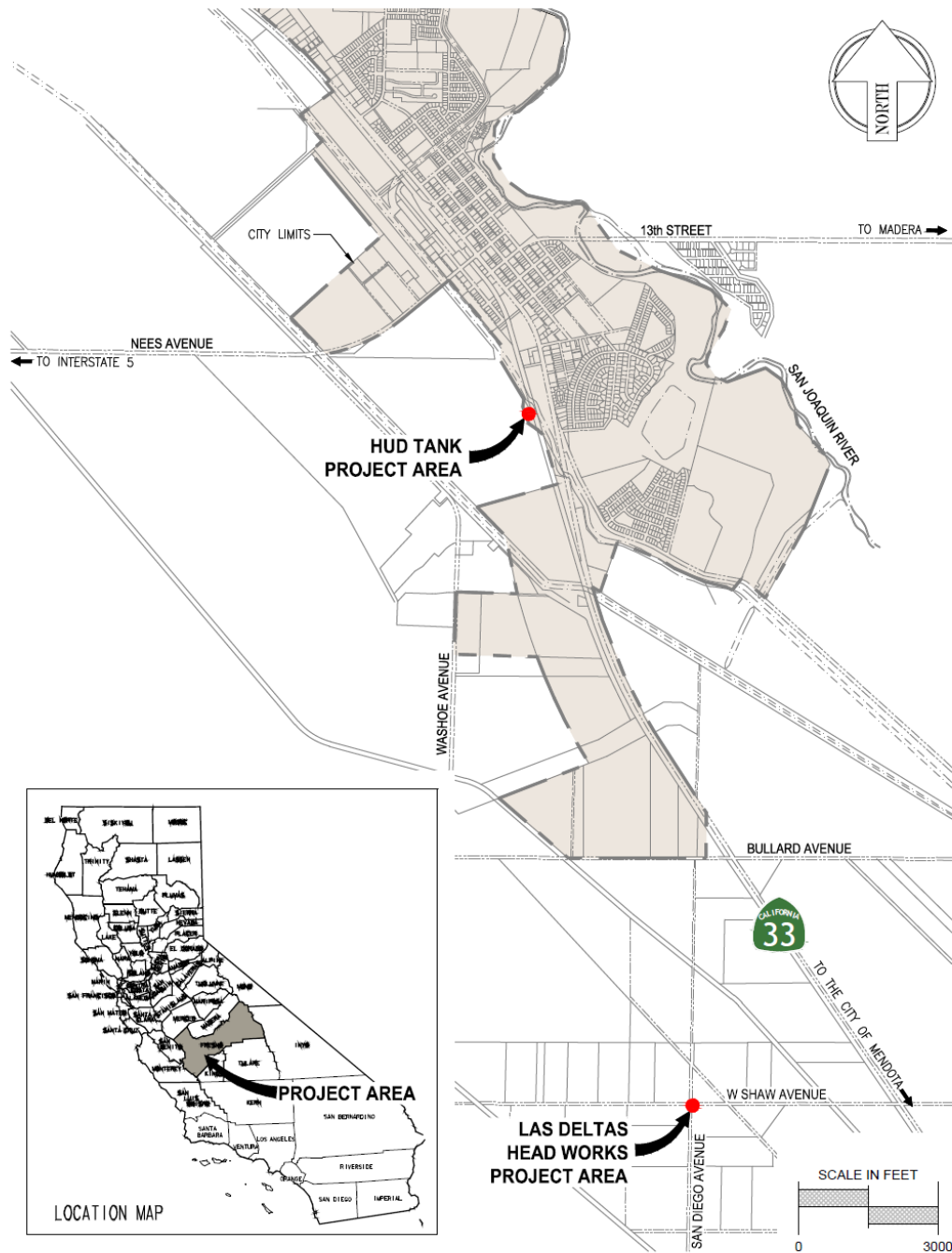


Monterey Park Tract CSD & Las Deltas



Monterey Park Tract CSD Variable Rate

	per 1,000 gal	per 1,000 gal	per 1,000 gal	Ave. mo. Usage of 14,250 gal
Year	Inside City Rate	Outside City Rate	Direct Costs to MPT CSD	
2017	\$2.00	\$3.00	\$5.25	\$117.56
2018	\$2.80	\$4.20	\$5.25	\$134.66
2019	\$3.84	\$5.76	\$5.25	\$156.89
2020	\$4.03	\$6.05	\$5.25	\$161.03
2021	\$4.23	\$6.35	\$5.25	\$165.30
2022	\$4.40	\$6.60	\$4.71	\$161.17



Existing Water System

(3) 31,000-gallon in-line storage tanks

(1) 10,000-gallon tank

107 service connections

Las Deltas Variable Rate

Volume Rate	Las Deltas	
	SFR	Commercial
	\$/1,000 gal	\$/1,000 gal
Inside City Rate	\$1.48	\$0.96
Outside City Rate Differential	\$0.82	\$0.82
Direct Costs to Las Deltas	\$1.38	\$1.38
Total Volume Rate	\$3.68	\$3.16

Discussion/Questions