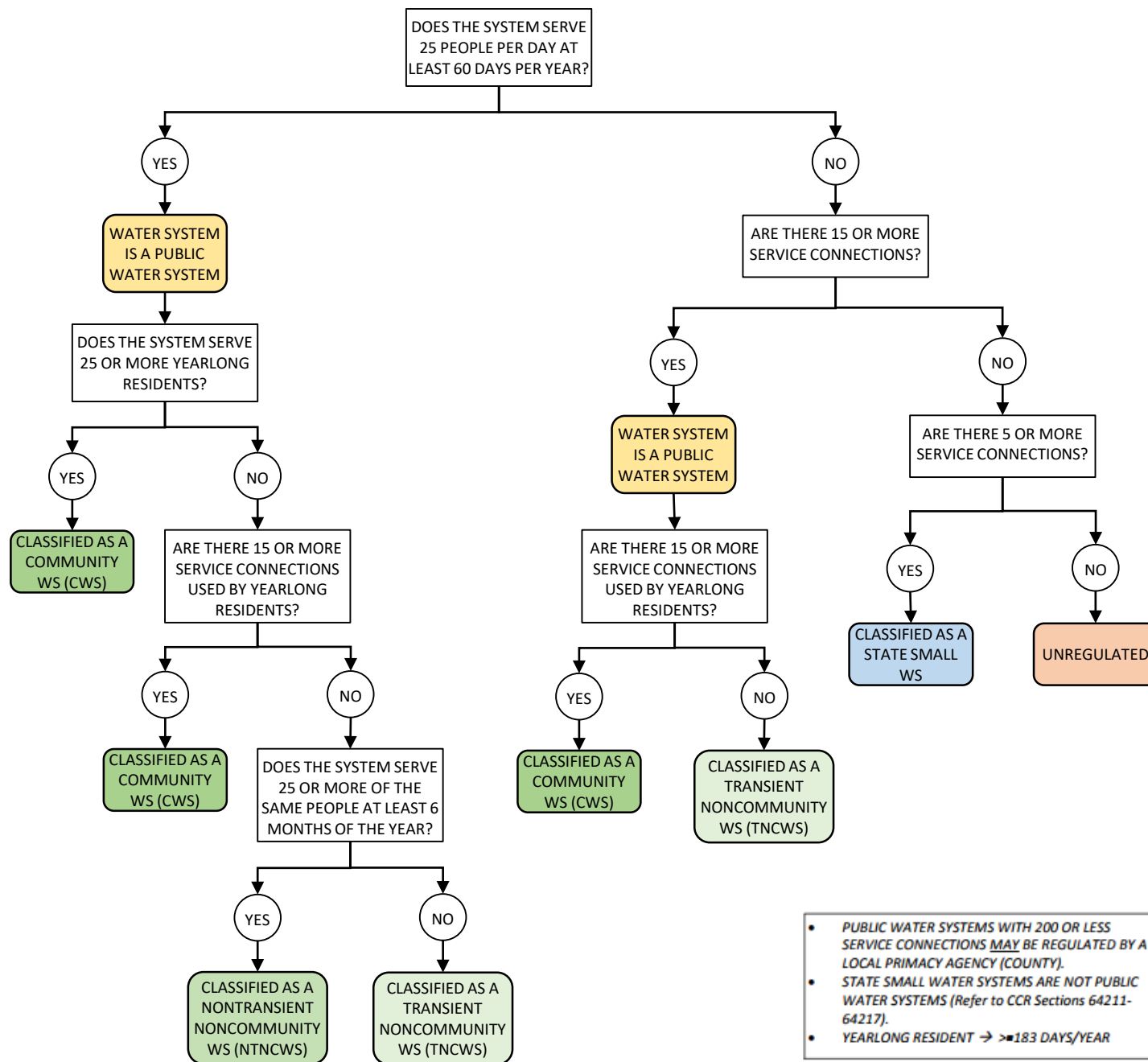


DECISION TREE FOR CLASSIFICATION OF WATER SYSTEMS



California Health and Safety Code §116275

- (e) “Human consumption” means the use of water for drinking, bathing or showering, hand washing, oral hygiene, or cooking, including, but not limited to, preparing food and washing dishes.
- (h) “Public water system” means a system for the provision of water for human consumption through pipes or other constructed conveyances that has 15 or more service connections or regularly serves at least 25 individuals daily at least 60 days out of the year. A public water system includes the following:
 - (1) Any collection, treatment, storage, and distribution facilities under control of the operator of the system that are used primarily in connection with the system.
 - (2) Any collection or pretreatment storage facilities not under the control of the operator that are used primarily in connection with the system.
 - (3) Any water system that treats water on behalf of one or more public water systems for the purpose of rendering it safe for human consumption.
- (i) “Community water system” means a public water system that serves at least 15 service connections used by yearlong residents or regularly serves at least 25 yearlong residents of the area served by the system.
- (k) “Nontransient noncommunity water system” means a public water system that is not a community water system and that regularly serves at least 25 of the same persons over six months per year.
- (n) “State small water system” means a system for the provision of piped water to the public for human consumption that serves at least five, but not more than 14, service connections and does not regularly serve drinking water to more than an average of 25 individuals daily for more than 60 days out of the year.
- (o) “Transient noncommunity water system” means a noncommunity water system that does not regularly serve at least 25 of the same persons over six months per year.

[HTTP://LEGINFO.LEGISLATURE.CA.GOV/FACES/CODES_DISPLAYSECTION.XHTML?LAWCODE=HSC&SECTIONNUM=116275](http://leginfo.ca.gov/faces/codes_displaysection.xhtml?lawcode=hsc§ionnum=116275)