

# DROUGHT RELATED PUBLIC WORKSHOP

## FEBRUARY 19, 2014



CALIFORNIA

# Water Boards

STATE WATER RESOURCES CONTROL BOARD

REGIONAL WATER QUALITY CONTROL BOARDS

# Curtailment Process

- As Mr. Kassel stated yesterday, staff's analysis is based on water right priority from most senior to most junior:
  - Riparian Rights
  - Pre-1914 Rights
  - Post-1914 Rights (these are the Permits, Licenses, Registrations and Certificates issued by the State Water Board)

# Monthly Diversion Demands

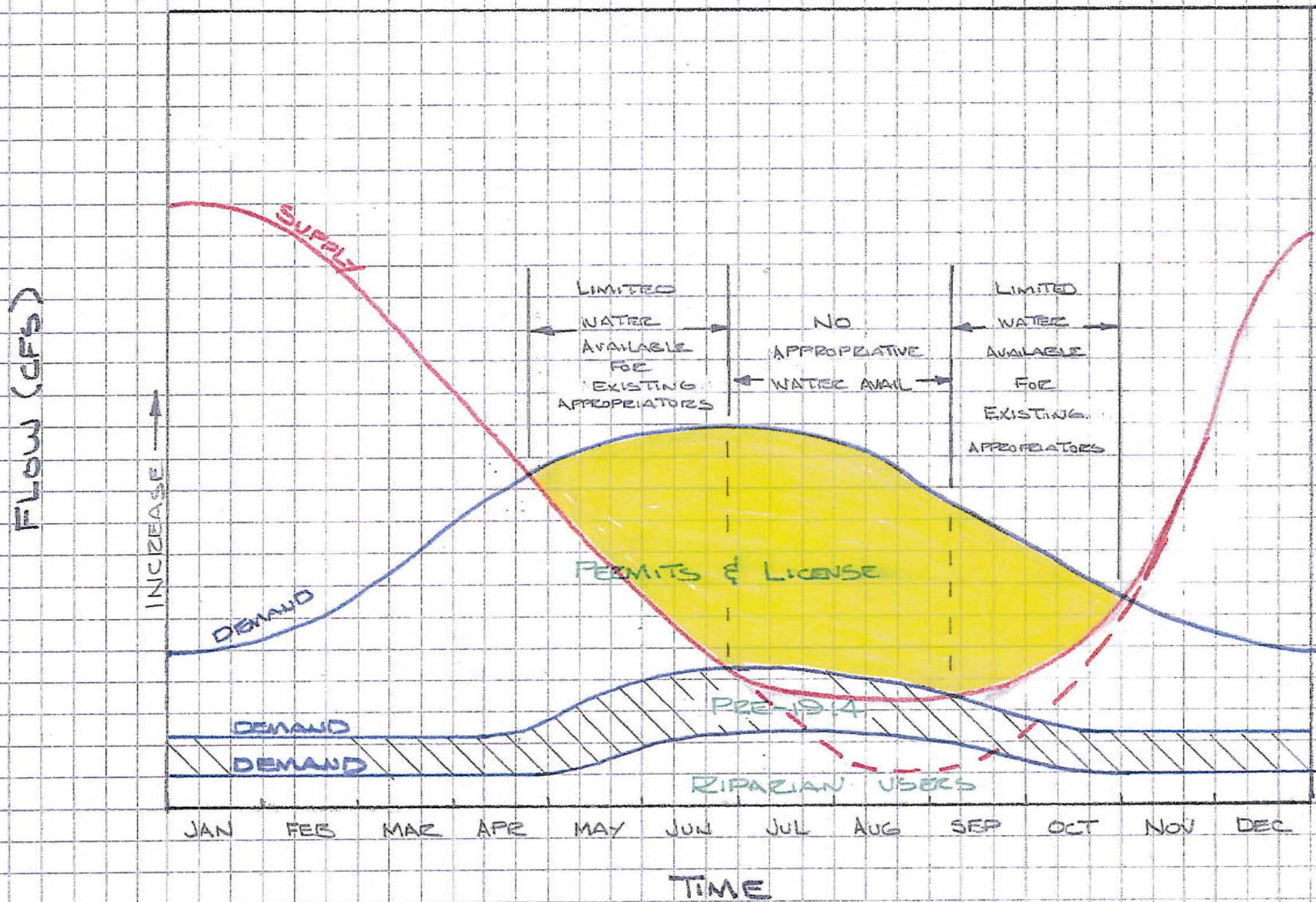
- Monthly Division Data from Online Reporting System
  - Statements of Water Diversion and Use report the monthly amounts diverted at each point of diversion (filed every 3 years)
  - Permit and License Reports are filed annually and have same monthly diversion amounts.

# Monthly Demand

- Staff reviewed reporting data and remove amounts reported for direct diversion for Power Use only.
- 2010 Statement Year is only complete year of record for all Statements.
- Some obvious errors in reported amounts were corrected.

# Demand Curves

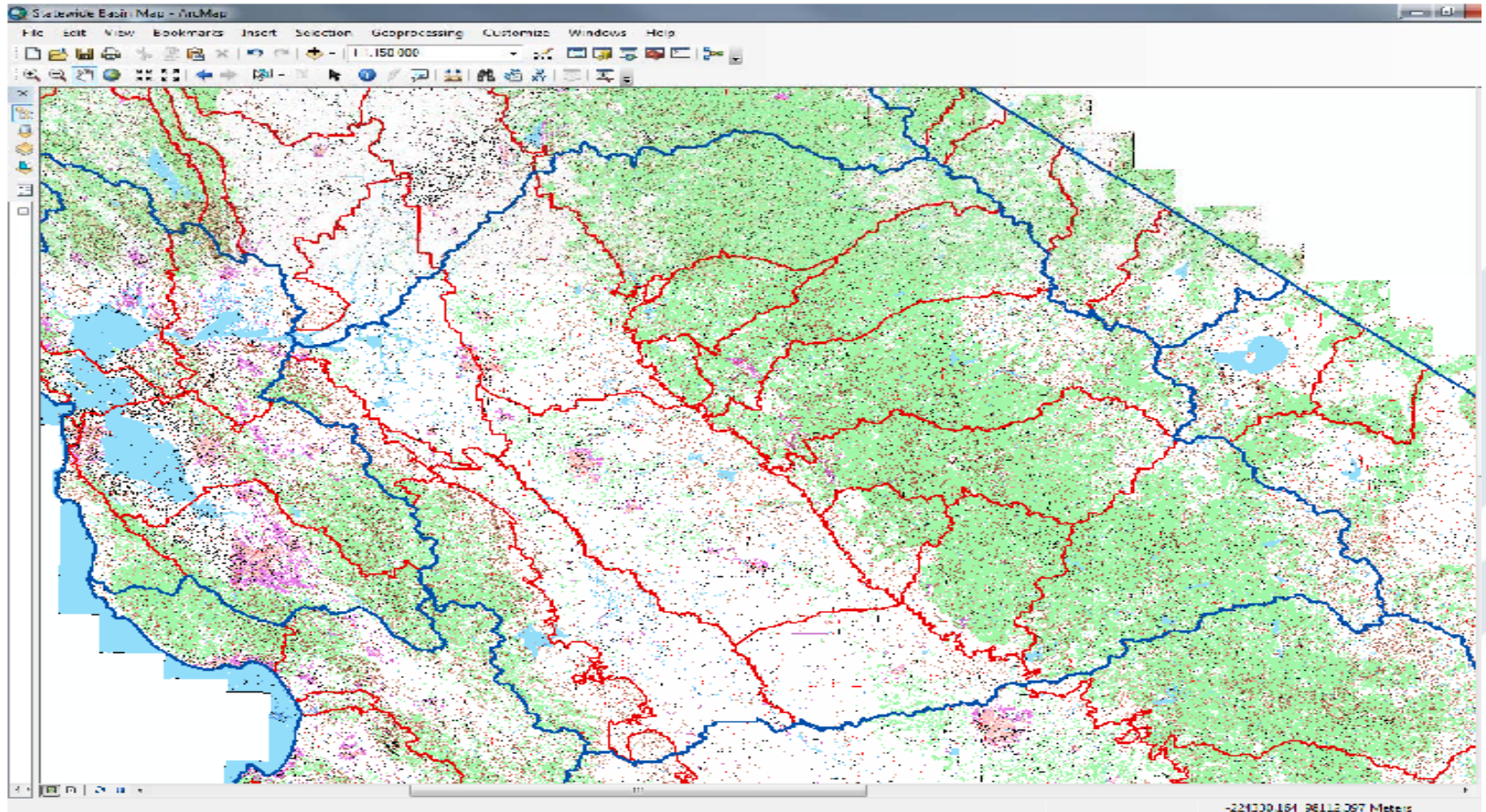
- In 1977, Demand curves were constructed and stacked based on priority.
- In 1977, Demands were based on assumed irrigation duty and acreage served.



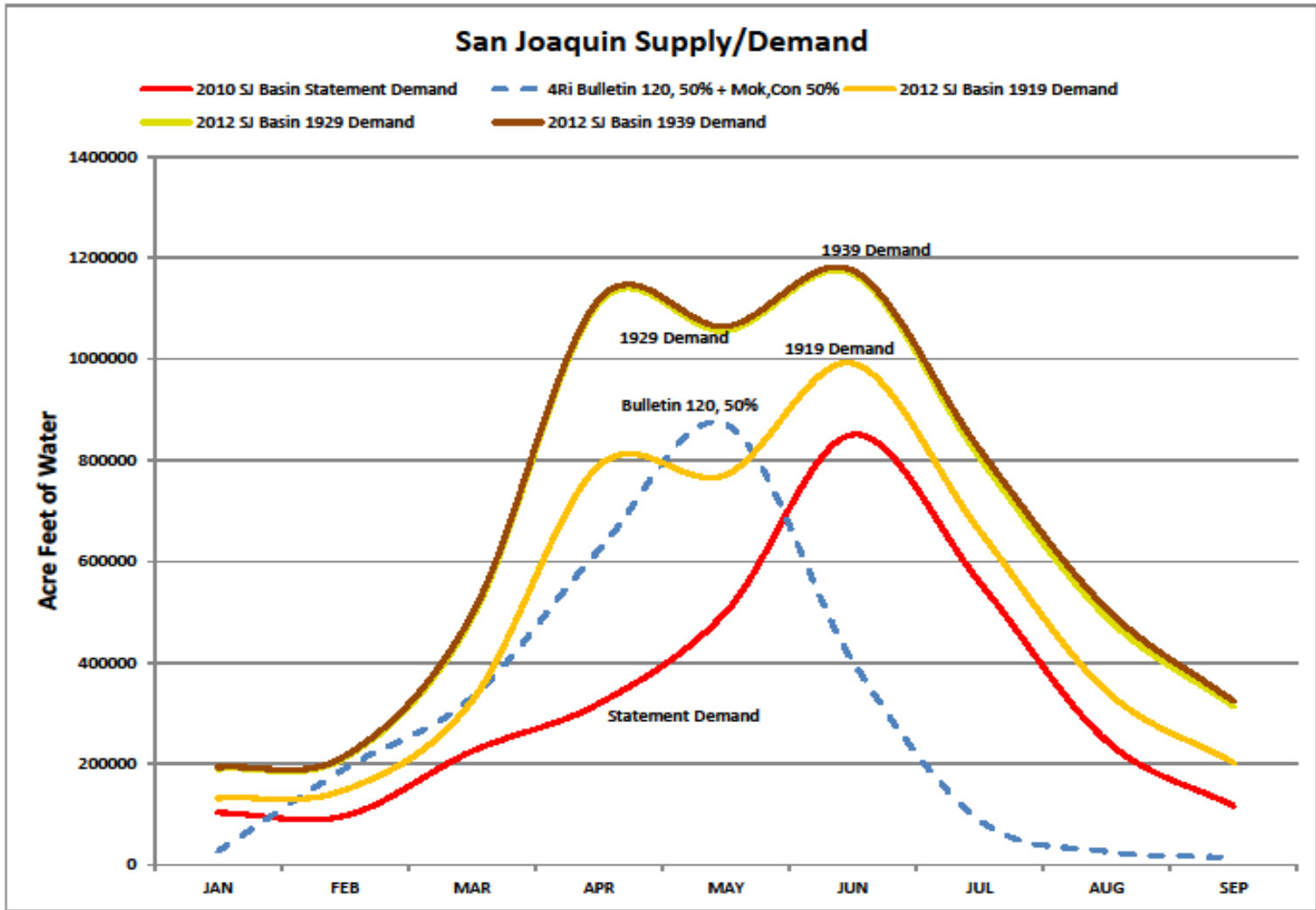
# Water Supply

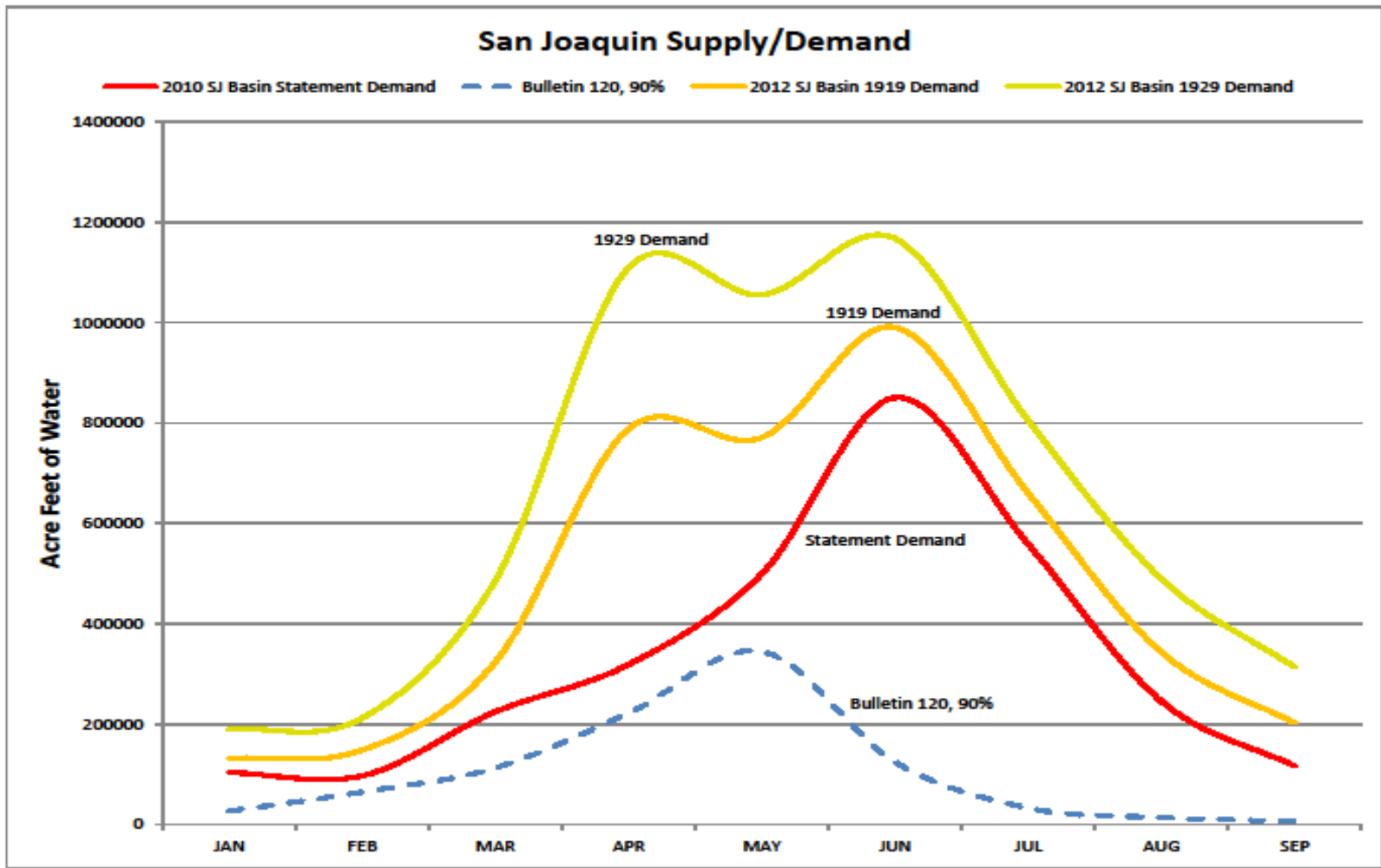
- Full Natural Flow (FNF) or Unimpaired Runoff from Department of Water Resources is being used, when available. FNF represents the natural water production of a stream, unaltered by upstream diversions, storage, or exports or imports.
- 50% and 90% Exceedance Graphed.

# San Joaquin Watershed

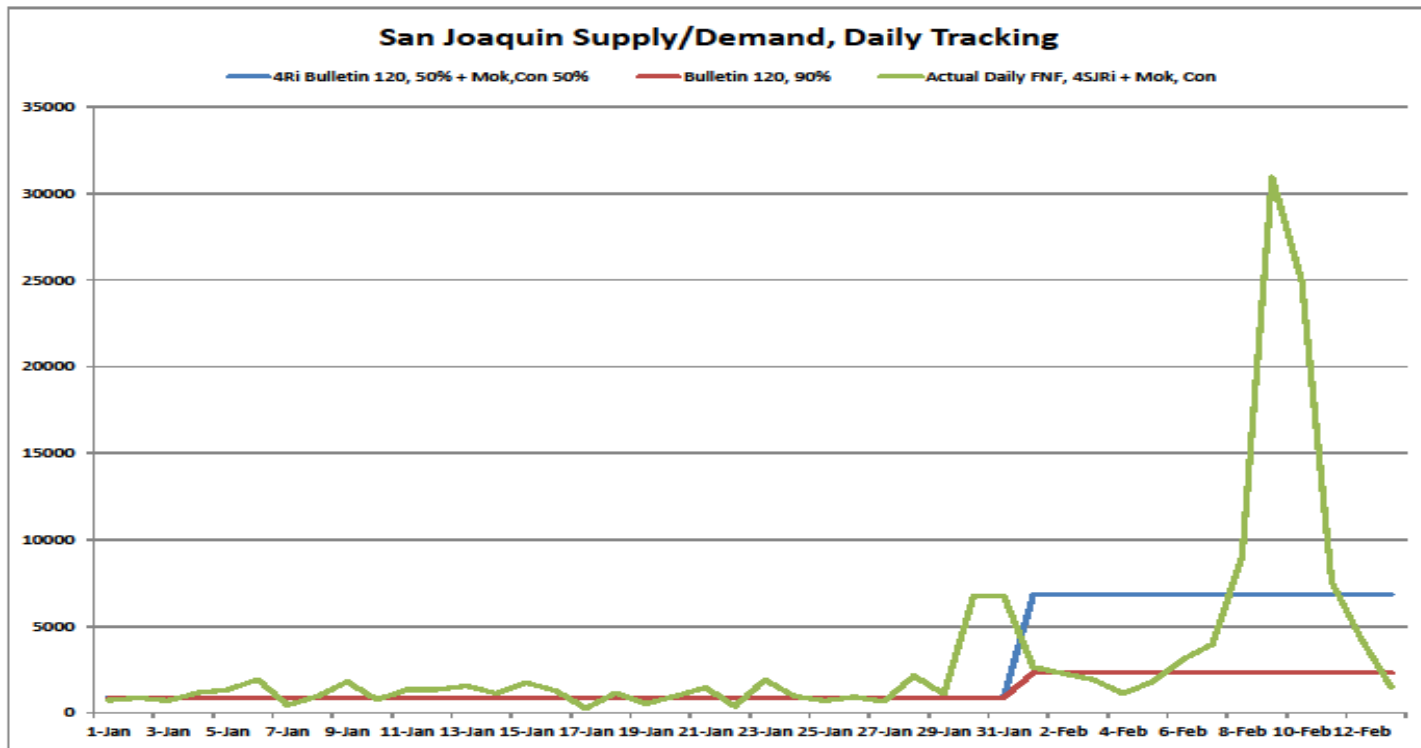








# Daily FNF Calculation is tracking 90%



# Factors to Consider

- The following additional issues further affects water availability:
  - Downstream Natural Stream losses- groundwater seepage, evaporation and transpiration of native vegetation.
  - Public Trust flow
  - In Delta, what portion of Delta Outflow, if SWP and USBR has insufficient storage.

# Questions

- If none, Les Grober will be making an additional presentation.