



Los Angeles Regional Water Quality Control Board

December 10, 2021

Mr. John Atwill
Hibco Corporation
15600 New Century Drive
Gardena, California 90248
JAtwill@growmore.com

GENERAL WASTE DISCHARGE REQUIREMENTS FOR INJECTION OF MOLASSES, EMULSIFIED VEGETABLE OIL, SODIUM BICARBONATE, AND BIOAUGMENTATION CULTURE AT FORMER HIBCO FACILITY AT 12620 CERISE AVENUE, HAWTHORNE, CALIFORNIA 90250 (FILE NO. 21-051, ORDER NO. R4-2014-0187, SERIES NO. 167, CI-10623, GLOBAL ID. WDR100053893)

Dear Mr. Atwill:

The Los Angeles Regional Water Quality Control Board (Regional Water Board) is the public agency with primary responsibility for the protection of ground and surface water quality for all beneficial uses within major portions of Los Angeles and Ventura Counties, including the referenced property above.

Hibco Corporation (Discharger) is the responsible party for the subject property located at 12620 Cerise Avenue, Hawthorne, California 90250 (Site). The Site was formerly a manufacturing facility that manufactured latex and foam rubber products. Currently, the Site is used as a parking lot. The June 2021 groundwater monitoring results indicated that tetrachloroethylene and trichloroethylene were detected at concentrations up to 2,500 micrograms per liter ($\mu\text{g/L}$) and 3,100 $\mu\text{g/L}$, respectively.

On March 23, 2021, Regional Water Board Site Cleanup Program staff approved the *Feasibility Study and Remedial Action Plan for Groundwater (RAP)* dated October 27, 2020. The Discharger proposes to inject 40,000 gallons of amendment solution containing 2,430 gallons of molasses, 648 gallons of emulsified vegetable oil, 2,126 pounds of sodium bicarbonate, 10 gallons of bioaugmentation culture (*Dehalococcoides* sp.), and 3,600 gallons of anaerobic chase water into the subsurface via 18 injection points (IP-1 through IP-18) at depths from approximately 35 to 50 feet below ground surface (Figure 1).

Regional Water Board staff has completed the review of your application for coverage under General Waste Discharge Requirements (WDRs) for injection of molasses,

LAWRENCE YEE, CHAIR | RENEE PURDY, EXECUTIVE OFFICER

emulsified vegetable oil, sodium bicarbonate, and bioaugmentation culture for in-situ groundwater remediation of volatile organic compounds. The Regional Water Board staff has determined that the proposed discharge meets the conditions specified in General WDRs Order No. R4-2014-0187, *General WDRs for In Situ Groundwater Remediation and Groundwater Re-Injection*, adopted by this Regional Water Board on September 11, 2014 and the revised Attachment A list of authorized injection materials as amended on August 10, 2020.

Enclosed are your General WDRs Order No. R4-2014-0187 (Series No. 167), Standard Provisions Applicable to WDRs, and Monitoring and Reporting Program (MRP) No. CI-10623. The Site is situated in the West Coast Basin of the Coastal Plain of Los Angeles Groundwater Basin. Based on the *Water Quality Control Plan for the Coastal Watersheds of Los Angeles and Ventura Counties* (Basin Plan), the groundwater quality objectives for the West Coast Basin are 800 milligrams per liter (mg/L) for total dissolved solids, 250 mg/L for sulfate, 250 mg/L for chloride, and 1.5 mg/L for boron. The proposed discharge shall not cause the mineral constituents of the receiving groundwater at the compliance points, downgradient outside the application area, to be in excess of applicable limits given in Attachment B of General WDRs Order No. R4-2014-0187.

MRP No. CI-10623 requires the Discharger to implement the monitoring and reporting program on the effective date of this enrollment under Regional Water Board General WDRs Order No. R4-2014-0187. When submitting monitoring or technical reports to the Regional Water Board per these requirements, please do not combine other reports with your monitoring reports. Submit each type of report as a separate document. The Discharger shall comply with the Electronic Submittal of Information (ESI) requirements by submitting all reports required under the MRP, including groundwater monitoring data in Electronic Deliverable Format (EDF), discharge location data, and Portable Document Format (PDF) digital copies of monitoring reports to the State Water Resources Control Board GeoTracker database under Global ID WDR100053893.

For all parties who upload electronic documents to the State GeoTracker database, it is no longer necessary to email a copy of these documents to losangeles@waterboards.ca.gov or submit hard copies to our office. The Regional Water Board will no longer accept documents (submitted by either hard copy or email) already uploaded to GeoTracker. Please see instructions for Electronic Submittal to the Los Angeles Regional Water Board for GeoTracker Users at:

<http://www.waterboards.ca.gov/losangeles/resources/Paperless/Paperless%20Office%20for%20GT%20Users.pdf>

To avoid paying future annual fees, please submit a written request for termination of your enrollment under the General WDRs Order No. R4-2014-0187 in a separate letter when the project is completed and the WDRs are no longer needed. Be aware that the annual fee covers the fiscal year billing period beginning July 1 and ending June 30, the following year. You will pay the full annual fee if your request for termination is made after the beginning of the new fiscal year beginning July 1.

If you have any questions, please contact the Project Manager, Dr. Ann Chang at (213) 620-6122 (ann.chang@waterboards.ca.gov), or the Chief of Groundwater Permitting Unit, Dr. James Kang at (213) 576-6683 (jim.kang@waterboards.ca.gov).

Sincerely,

Renee Purdy
Executive Officer

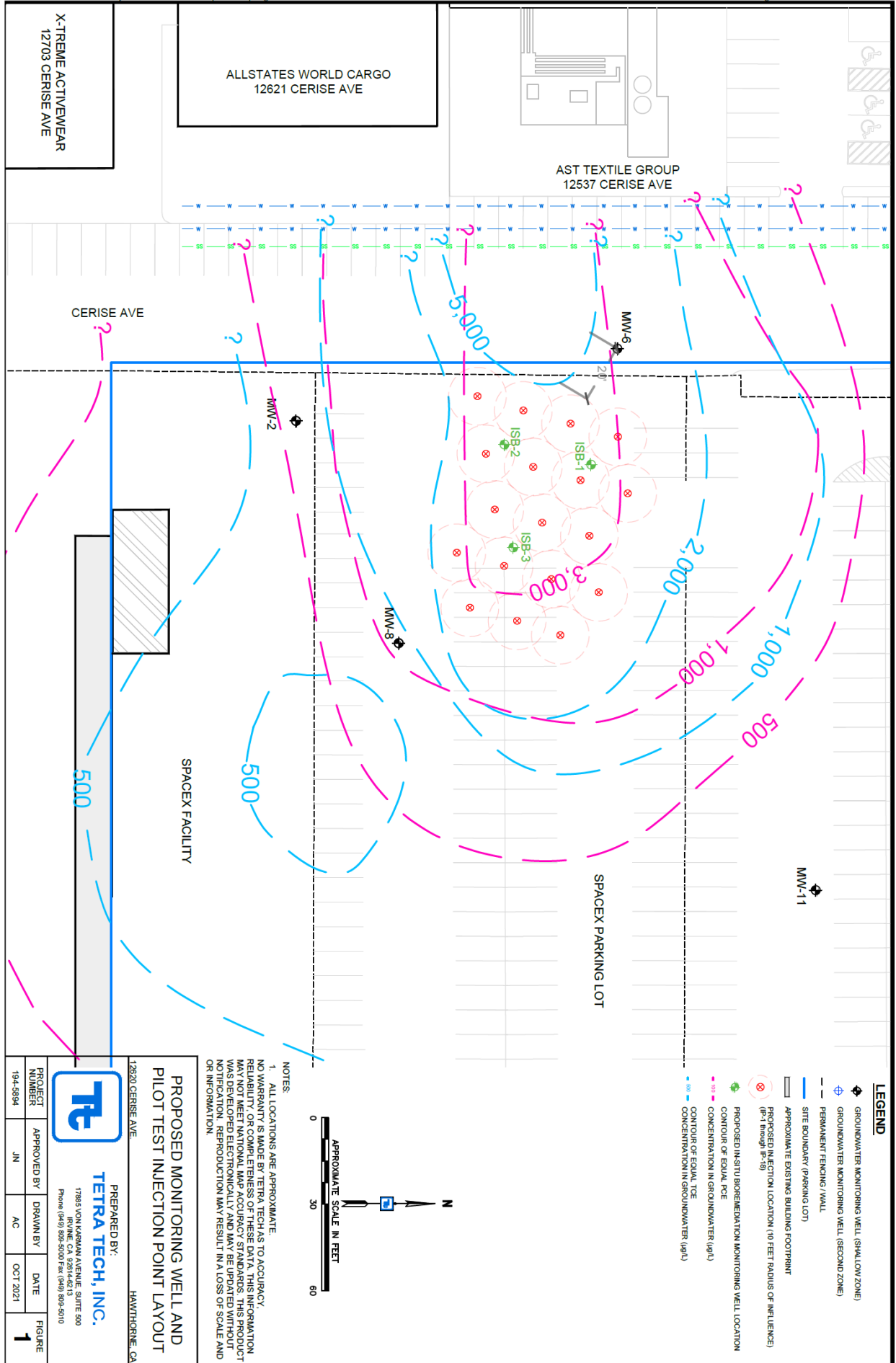
Enclosures: 1. Figure 1 – Proposed Monitoring Well and Pilot Test Injection Point Layout

2. General Waste Discharge Requirements Order No. R4-2014-0187 and the Order's Attachments A (List of Authorized Injection Material Amendments), B (Water Quality Objectives for Selected Constituents in Regional Ground Waters), and C (Standard Provisions Applicable to Waste Discharge Requirements) are available at the Regional Water Board website:

https://www.waterboards.ca.gov/losangeles/board_decisions/adopted_orders/index.html#2

3. Monitoring and Reporting Program No. CI-10623

cc: Mr. Jay Neuhaus, Tetra Tech, Inc., Jay.Neuhaus@tetrattech.com



LEGEND

- ◆ GROUNDWATER MONITORING WELL (SHALLOW ZONE)
- ◆ GROUNDWATER MONITORING WELL (SECOND ZONE)
- - - PERMANENT FENCING / WALL
- SITE BOUNDARY (PARKING LOT)
- ▭ APPROXIMATE EXISTING BUILDING FOOTPRINT
- PROPOSED INJECTION LOCATION (10 FEET RADIUS OF INFLUENCE) (IP-1 through IP-18)
- PROPOSED IN-SITU BIOREMEDIATION MONITORING WELL LOCATION
- CONTOUR OF EQUAL TCE
- CONTOUR OF EQUAL PCE
- CONCENTRATION IN GROUNDWATER (µg/L)
- CONCENTRATION IN GROUNDWATER (µg/L)

NOTES:

1. ALL LOCATIONS ARE APPROXIMATE.
- NO WARRANTY IS MADE BY TETRA TECH AS TO ACCURACY, RELIABILITY, OR COMPLETENESS OF THESE DATA. THIS INFORMATION MAY NOT MEET NATIONAL MAP ACCURACY STANDARDS. THIS PRODUCT WAS DEVELOPED ELECTRONICALLY AND MAY BE UPDATED WITHOUT NOTIFICATION. REPRODUCTION MAY RESULT IN A LOSS OF SCALE AND OR INFORMATION.

PROPOSED MONITORING WELL AND PILOT TEST INJECTION POINT LAYOUT

12620 CERISE AVE. HAWTHORNE, CA

TETRA TECH, INC.

17885 VON KARMAN AVENUE, SUITE 600
IRVINE, CA 92614-6813
Phone (949) 899-5000 Fax (949) 899-5010

PROJECT NUMBER	APPROVED BY	DRAWN BY	DATE	FIGURE
194-5894	JN	AC	OCT 2021	1