

---

State Water Resources Control Board

May 1, 2020

Mr. Robert C. Ferrante  
Chief Engineer and General Manager  
Joint Outfall System  
1955 Workman Mill Road  
Whittier, CA 90601-1400

CERTIFIED MAIL  
0000 0000 0000 0000 0000

**NOTICE OF APPLICABILITY**

**STATE WATER RESOURCES CONTROL BOARD ORDER WQ 2016-0068-DDW,  
WATER RECLAMATION REQUIREMENTS FOR RECYCLED WATER USE, JOINT  
OUTFALL SYSTEM, LOS COYOTES WATER RECLAMATION PLANT (FILE NO. 65-  
182, CI. NO 6182) WDID 4B190107015**

The State Water Resources Control Board (State Water Board) in coordination with the Los Angeles Regional Water Quality Control Board (Los Angeles Regional Board) and the Santa Ana Regional Water Quality Control Board (Santa Ana Regional Board) reviewed the Joint Outfall System's Notice of Intent (NOI) for regulatory coverage under State Water Resources Control Board (State Water Board) Water Quality Order No. WQ 2016-0068-DDW, Water Reclamation Requirements for Recycled Water Use (hereafter, General Order).

The Joint Outfall System (Administrator) owns and operates the Los Coyotes Water Reclamation Plant (Los Coyotes WRP or Facility) at 10740 East 166th Street, Cerritos, California, in Los Angeles County. The Facility currently recycles treated wastewater under Water Reclamation Requirements (WRRs) Order No. 87-51, adopted by the Los Angeles Regional Board on April 27, 1987. Pursuant to California Water Code section 13523, this WRR was reviewed in 1997 and was readopted without change in Los Angeles Regional Board Order No. 97-072, adopted on May 12, 1997.

The Administrator currently uses approximately 4 million gallons per day (MGD) of the 20.4 MGD total treated effluent in 2016 with approximately 0.2 MGD used at sites within the Santa Ana Regional Board jurisdiction and the remaining 3.8 MGD used at sites within the Los Angeles Regional Board jurisdiction. The Los Coyotes WRP recycled water uses include, but are not limited to, urban landscape irrigation, landscape impoundments, industrial cooling towers, industrial process water, construction activities, and toilet flushing. The remainder of the treated effluent that is not used for recycling is discharged to the San Gabriel River under Waste Discharge Requirements (WDRs) contained in National Pollutant Discharge Elimination System (NPDES) Permit

E. JOAQUIN ESQUIVEL, CHAIR | EILEEN SOBECK, EXECUTIVE DIRECTOR

No. CA0054011), Order No. R4-2015-0124, adopted by Los Angeles Regional Board on June 11, 2015.

On February 15, 2018, the State Water Board received a Notice of Intent (NOI) (i.e., application) from the Administrator seeking coverage under the General Order. The State Water Board, in coordination with the Los Angeles Regional Board and Santa Ana Regional Board, reviewed the NOI and deemed complete on December 3, 2019. The Administrator also submitted the following California Code of Regulation, title 22, Division 4 (Title 22) Engineering Reports approved by the State Water Board Division of Drinking Water (DDW) for the current uses:

The following are submittal dates for Engineering Reports and amendments describing recycled water use from the Los Coyotes WRP since 1987:

1. November 10, 1987, for the City of Cerritos distribution water system to serve 46 sites.
2. June 4, 1990, for City of Lakewood utilizing distribution system from the City of Cerritos to serve 15 sites.
3. December 4, 1991, for CBMWD's Century System to serve 23 sites (within the Cities of Bellflower, Compton, Downey, Lynwood, Norwalk, Paramount, Santa Fe Springs, and South Gate).
4. October 5, 2005, for an extension of the CBMWD's Century System to serve a power plant in the City of Vernon.
5. July 30, 2008, for additional sites within City of Santa Fe Springs through CBMWD's Century System.
6. August 8, 2008, for additional sites within City of Lynwood through CBMWD's Century System.
7. August 18, 2008, for additional sites within City of Downey through CBMWD's Century System.

A request to add an additional use area may require an additional or supplemental engineering report.

Tertiary-treated recycled water is delivered from the Sanitation Districts' Los Coyotes WRP to wholesale water distributors (Distributors). The Sanitation Districts have agreements directly with the Cities of Cerritos (Cerritos) and Bellflower (Bellflower), and with the Central Basin Municipal Water District (CBMWD). Recycled water is conveyed to either other retail water purveyors (Retailers) or directly to end users through various transmission systems. Bellflower utilizes its own small pump and transmission line to provide recycled water to a single site. Similarly, Cerritos uses its own pump station and transmission system to provide recycled water to its reuse sites; in addition, the City of

Lakewood provides recycled water to its sites through two connections to the Cerritos system. Also, the Cities of La Palma and Cypress obtain recycled water for hauled use at their respective civic centers through hydrant connections on the Cerritos system. Forest Lawn Cemetery has constructed a transmission line from the Cerritos distribution system to serve its facility in the City of Cypress. CBMWD utilizes its own transmission system, supplied by the Cerritos pump station, to provide recycled water to several local Retailers who, in turn, provide it to their end users. By using Los Coyotes WRP's effluent for non-potable purposes, the service area increases the availability of imported water and groundwater supplies for potable uses. An organizational chart is provided in Figure 1. The reuse site location maps and lists of reuse sites for City of Lakewood, City of Cerritos, Central Basin Municipal Water District are shown in Figures 3A, 3B, 3C and Table 1.

Based on the information provided in the NOI, the proposed water recycling project satisfies the general and specific conditions of the General Order. Therefore, this serves as formal notice that Order WQ 2016-0068-DDW is applicable to the site and discharge described below. The Joint Outfall System will act as the Administrator of the Recycled Water Program. You are hereby assigned Order No. WQ-2016-0068-RB4 (File No. 65-182, Series No. 001, CI-6182) for this discharge. Please include this number on all correspondence related to this discharge.

#### **A. WASTEWATER TREATMENT FACILITY**

The Los Coyotes WRP provides tertiary wastewater treatment by utilizing the following treatment process sequence: primary sedimentation, activated sludge nitrification/denitrification biological treatment, secondary sedimentation, coagulation, inert media filtration, and chlorination disinfection. This level of treatment meets the most stringent treatment standards and water requirements for all non-potable water reuse applications found in the Title 22 Water Recycling Criteria. Dechlorination using sodium bisulfite is applied to treated effluent that is to be discharged to the San Gabriel River.

Influent flow (raw sewage) to the Los Coyotes WRP is conveyed from the Sanitation Districts' JO "F" regional trunk sewer. The Los Coyotes WRP is a scalping plant without solids handling and as such, all primary sludge, waste activated sludge (WAS), skimmings, and waste backwash from the Los Coyotes WRP is returned to the JO "F" trunk sewer for conveyance and treatment downstream, at the Sanitation District's Joint Water Pollution Control Plant in Carson. The process flow schematic diagram is shown in Figure 2.

#### **B. RECYCLED WATER PROGRAM**

The Administrator, will be responsible for the administration of the Recycled Water Program authorized pursuant to this General Order, including the requirements of Title 22, in accordance with the Administrator's NOI, this Notice of Applicability (NOA) and

associated Monitoring and Reporting Program (MRP), the Joint Outfall System Recycled Water Users Handbook, and the Recycled Water Operation and Management Plan included as enclosures of this NOA. The Administrator is the recycled water producer and is responsible for all permit requirements related to the production of recycled water. Administrator owned/controlled uses of recycled water are limited to the use of recycled water within the Los Coyotes WRP for various on-site processes/applications (e.g. wash water, filter backwash, landscape irrigation). Recycled water produced by the Los Coyotes WRP is currently used for urban landscape irrigation (golf courses, street medians, parks, playgrounds, schoolyards, cemetery, commercial and residential landscaping, athletic fields, and ornamental plant nurseries), landscape impoundments, industrial cooling towers, industrial process water, construction activities, and toilet flushing by the Contracted Users within City of Bellflower, City of Cerritos, and Central Basin Municipal Water District.

The Administrator provides recycled water from the Los Coyotes WRP to CBMWD and Cities of Bellflower and Cerritos. Cerritos and CBMWD are wholesale water purveyors, who convey the recycled water to other retail water purveyors who, in turn, deliver the recycled water to the end users (which are the retail purveyor's customers). The Administrator has entered into three separate agreements to provide recycled water from the Los Coyotes WRP to CBMWD and Cities of Bellflower and Cerritos.

### **C. STATE WATER BOARD DIVISION OF WATER RIGHTS CONSIDERATIONS**

The Sanitation Districts of Los Angeles County (Petitioner) has filed a wastewater change petition with the State Water Resources Control Board, Division of Water Rights pursuant to Water Code section 1211. The Petitioner requests authorization to reduce the current annual average (17.0 MGD for Water Years 2014-2018) discharge of treated wastewater down to 2.0 MGD from the Los Coyotes Water Reclamation Plant to the lower portion of the San Gabriel River watershed during all months of the year based on recycled water demand. The Notice of Wastewater Change Petition is WW0106 and is awaiting approval from the Division of Water Rights. The recycled water is used for industrial and irrigation purposes. However, the Los Coyotes Water Reclamation Plant current reuse of recycled can continue without having to wait for the water rights petition approval because there is no additional reduction in flow. Future use of recycled water will be covered by this pending water rights approval.

### **D. WATER RECYCLING USE AREA REQUIREMENTS**

The Administrator and users under the Recycled Water Program must comply with the following water recycling use area requirements:

1. Uses of recycled water produced by Los Coyotes WRP are limited to the following: Los Coyotes WRP in-plant on-site processes/applications (e.g. wash water, filter backwash, landscape irrigation), urban landscape irrigation (golf courses, street medians, parks, playgrounds, schoolyards, cemetery, commercial and residential

landscaping, athletic fields, and ornamental plant nurseries), landscape impoundments, industrial cooling towers, industrial process water, construction activities, and toilet flushing. Other use types not covered by this NOA and the DDW-accepted Title 22 Engineering Report must be addressed in a supplement NOI and Title 22 Engineering Report.

2. Unless otherwise permitted, application of recycled water shall be confined to the Use Area as provided in Figures 3A, 3B, 3C, and Table 1.
3. The production, distribution, and use of recycled water shall conform to an Engineering Report prepared pursuant to Title 22, section 60323 and approved by the Division of Drinking Water.
4. The use of recycled water shall not cause pollution or nuisance, as defined by Water Code section 13050.
5. Recycled water shall not be allowed to escape from the use area(s) as surface flow that would either pond and/or enter surface waters, unless authorized by WDRs, waivers of WDRs, or conditional prohibitions regulating agricultural discharges from irrigated lands.
6. The recycled water shall be disinfected tertiary recycled water as defined by Title 22, section 60301.230.
7. No irrigation with disinfected tertiary recycled water shall take place within 50 feet of any domestic water supply well.
8. No physical connection shall exist between recycled water piping and any domestic water supply, domestic well or existing potable water systems.
9. Public contact with recycled water shall be controlled using signs and/or other appropriate means within project boundaries.
10. The use area shall be managed to prevent breeding of mosquitos including no standing water 48 hours after dust control operation.
11. No recycled water shall be applied to irrigation areas during periods when soils are saturated.
12. The Administrator shall ensure prompt notification of any recycled water spills or unauthorized uses in accordance with procedures outlined in the Joint Outfall System Recycled Water Users Handbook.
13. All use areas that are accessible to the public shall be posted with signs that are visible to the public. The size shall be no less than 4 inches high by 8 inches wide, and shall include the following wording: "RECYCLED WATER – DO NOT DRINK". Each sign shall display an international symbol similar to that shown in California

Code of Regulations, title 22, Figure 60310-A (Figure 4). Alternative signage and wording, or an educational program, may be acceptable on a case-by-case basis, provided the use site demonstrates to the Regional Water Boards and to DDW that the alternative approach will assure an equivalent degree of public notification.

## **E. DIVISION OF DRINKING WATER REQUIREMENTS**

On March 4, 2019, State Water Board Division of Drinking Water (DDW) transmitted a conditional acceptance letter for the Los Coyotes Water Reclamation Plant Revised Water Recycling Program Technical Report (Title 22 Engineering Report). The Discharger must comply with the approved Title 22 Engineering Report and any DDW requirements stated in the conditional acceptance letter. A supplementary engineering report along with necessary information and drawings for any new recycled water use site in the future must be submitted for review and acceptance by DDW.

## **F. SANTA ANA REGIONAL WATER QUALITY CONTROL BOARD REQUIREMENTS**

Recycled water produced by the Los Coyotes WRP is currently used at three sites in Orange County. Small amounts of recycled water are intermittently hauled via tanker truck for irrigation around the civic centers of the Cities of Cypress (beginning in June 2015) and La Palma (beginning in April 2016). The Administrator has submitted to the Santa Ana Water Board a draft TDS Offset Plan and Resolution No. 19-1118 adopted by the board of the Water Replenishment District of Southern California granting Total Dissolved Solids (TDS) reduction (dilution) credits to the Administrator from the volume of lower TDS containing recycled water that is injected in to the Alamitos Gap Seawater Intrusion Barrier and that enters the Orange County Groundwater Management Zone (OCMZ). The Administrator shall comply with following requirements:

1. The Administrator shall ensure that the use of recycled water within the OCMZ does not exceed the 12-month running average effluent limit of 580 mg/L unless the Administrator implements an approved TDS Offset Plan and demonstrates that exceedances are being offset effectively.
2. Please submit by April 30 of each year a TDS Offset Report that demonstrates that the Administrator has complied with the TDS effluent limit and include pertinent details such as TDS/flow data tables, equations, computational results, and conclusions and a TDS Offset Report transmittal letter that includes the same penalty of perjury statement required for the submittal of the annual monitoring report and shall be signed by the Administrator or the Administrator's authorized agent.
3. Submit within 90-days of the effective date of this NOA a Final TDS Offset Plan for approval by the Executive Officer of the Santa Ana Water Board.

## **G. RECYCLED WATER USE AREA MONITORING AND REPORTING REQUIREMENTS**

Requirements for monitoring the recycled water system shall be in accordance with the attached Monitoring and Reporting Program No WQ-2016-0068-RB4-CI-6182.

Disinfection system monitoring shall be conducted on a daily basis and all monitoring results shall be reported according to the reporting schedule contained in the Monitoring and Reporting Program. In addition, site inspection reports and monitoring reports as required in the Administrator's Recycled Water Program shall be included in the annual monitoring report.

## **H. DISCHARGE REQUIREMENTS**

The Administrator and users under the Recycled Water Program must comply with the following discharge requirements:

1. The discharge of recycled water in a manner different from that described in the NOI is prohibited, unless otherwise authorized under separate permit.
2. Recycled water shall not be used to replenish groundwater resources unless authorized by a separate WDRs/WRRs. Groundwater replenishment activities include surface spreading basins, percolation ponds, or injection through groundwater wells.

## **I. GENERAL INFORMATION AND REQUIREMENTS**

The Administrator shall comply with the Prohibitions, Specifications, Water Recycling Administration Requirements, and General Provisions of the General Order.

Please review this NOA carefully to ensure that it completely and accurately reflects the proposed Recycled Water Program. If the discharge violates the terms or conditions, the Regional Water Boards may take enforcement action, including the assessment of an administrative civil liability. Failure to abide by the conditions of the General Order, including MRP No. WQ-2016-0068-RB4-CI-6182), and this letter authorizing applicability could result in enforcement actions, as authorized by provisions of the California Water Code.

The required annual fee specified in the annual billing from the State Water Board shall be paid until this NOA is officially terminated. The Administrator must submit in writing a Notice of Termination once the water recycling program has ended.

## **J. DOCUMENT SUBMITTALS**

The Administrator must submit reports to the Los Angeles Regional Board, Santa Ana Regional Board, and DDW as following:

1. The Los Angeles Regional Board requires the Administrator to submit signed and certified self-monitoring reports (SMRs). The results of monthly, quarterly, annual analyses, calculations and observations and the results of all required monitoring shall be reported on the due date according to the reporting schedule of the Monitoring and Reporting Program. Paper SMRs should be converted to a portable document format a(PDF) and submitted electronically to the State Water Board's GeoTracker database. In addition, analytical data shall be uploaded to the GeoTracker database under a site-specific global identification number. Reference the reports to Compliance File No. CI-6182 to facilitate routing to the appropriate staff and file.
2. Copies of reports to DDW and Santa Ana Regional Water Board shall be submitted via e-mail to the following addresses if they are in PDF format and less than or equal to 10 MB: [DDWRegion4@waterboards.ca.gov](mailto:DDWRegion4@waterboards.ca.gov), [Sherly.Rosilela@waterboards.ca.gov](mailto:Sherly.Rosilela@waterboards.ca.gov), and [SantaAna@waterboards.ca.gov](mailto:SantaAna@waterboards.ca.gov).

The Los Angeles and Santa Ana Regional Water Board will assume the compliance and enforcement roles of this Notice of Applicability. For questions regarding compliance and enforcement within respective Regional Water Board boundaries, please contact the following individuals:

1. Los Angeles Regional Board: Jeong-Hee Lim, (213) 576-6616, [jeong-hee.lim@waterboards.ca.gov](mailto:jeong-hee.lim@waterboards.ca.gov).
2. Santa Ana Regional Board: Julio Lara, (951) 782-4901, [julio.lara@waterboards.ca.gov](mailto:julio.lara@waterboards.ca.gov).

If you find it necessary to make a change to your permitted operations, including any additional use areas, please contact Sherly Rosilela at (916) 341-5578, or email to [sherly.rosilela@waterboards.ca.gov](mailto:sherly.rosilela@waterboards.ca.gov).

Sincerely,



Robert Brownwood  
Assistant Deputy Director

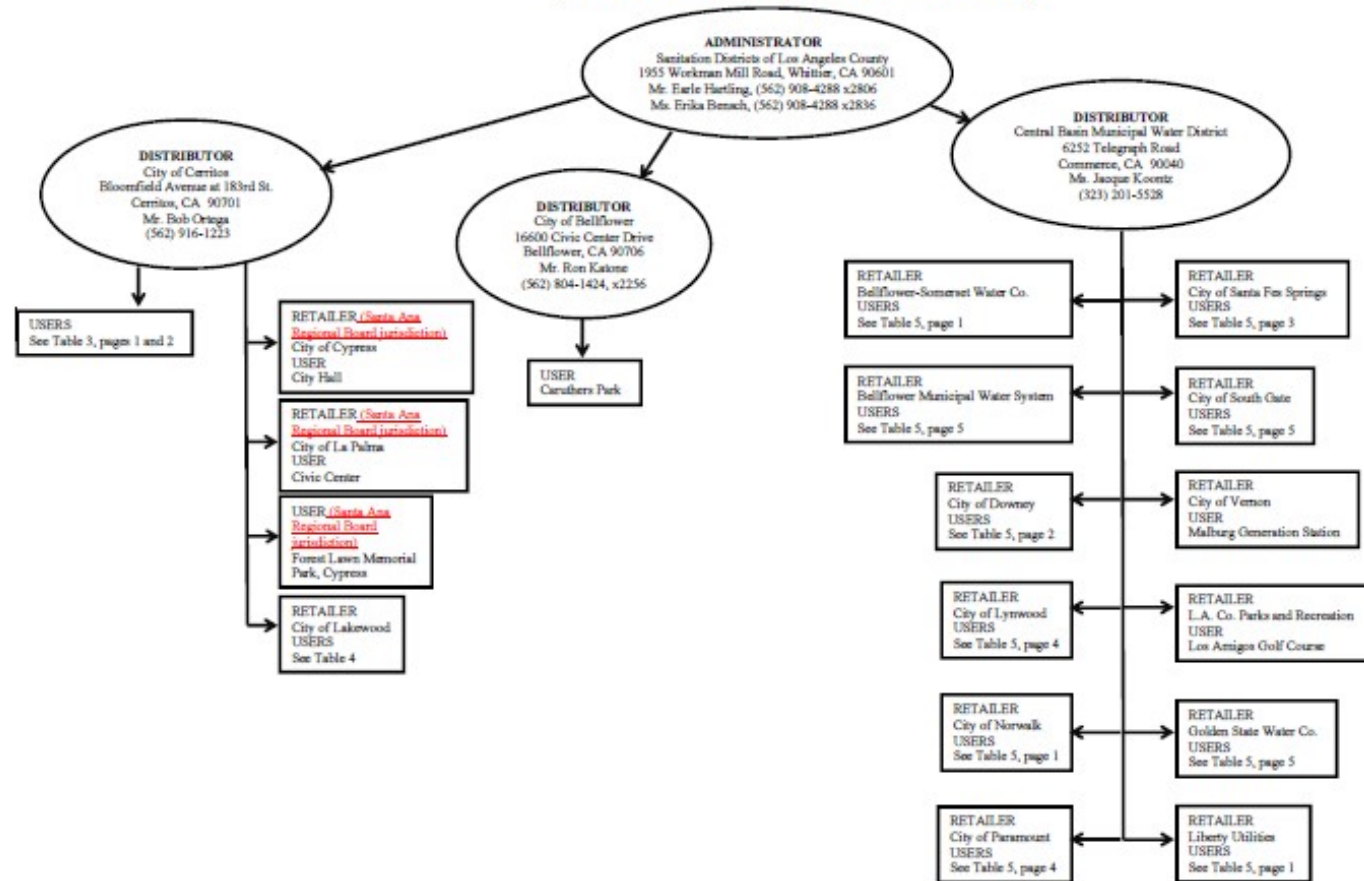
Enclosures:    Monitoring and Reporting Program No. WQ 2016-0068-RB4-CI-6182  
                     State Water Resources Control Board Order WQ 2016-0068-DDW,  
                     *Water Reclamation Requirements for Recycled Water Use*  
                     Recycled Water Operation and Management Plan



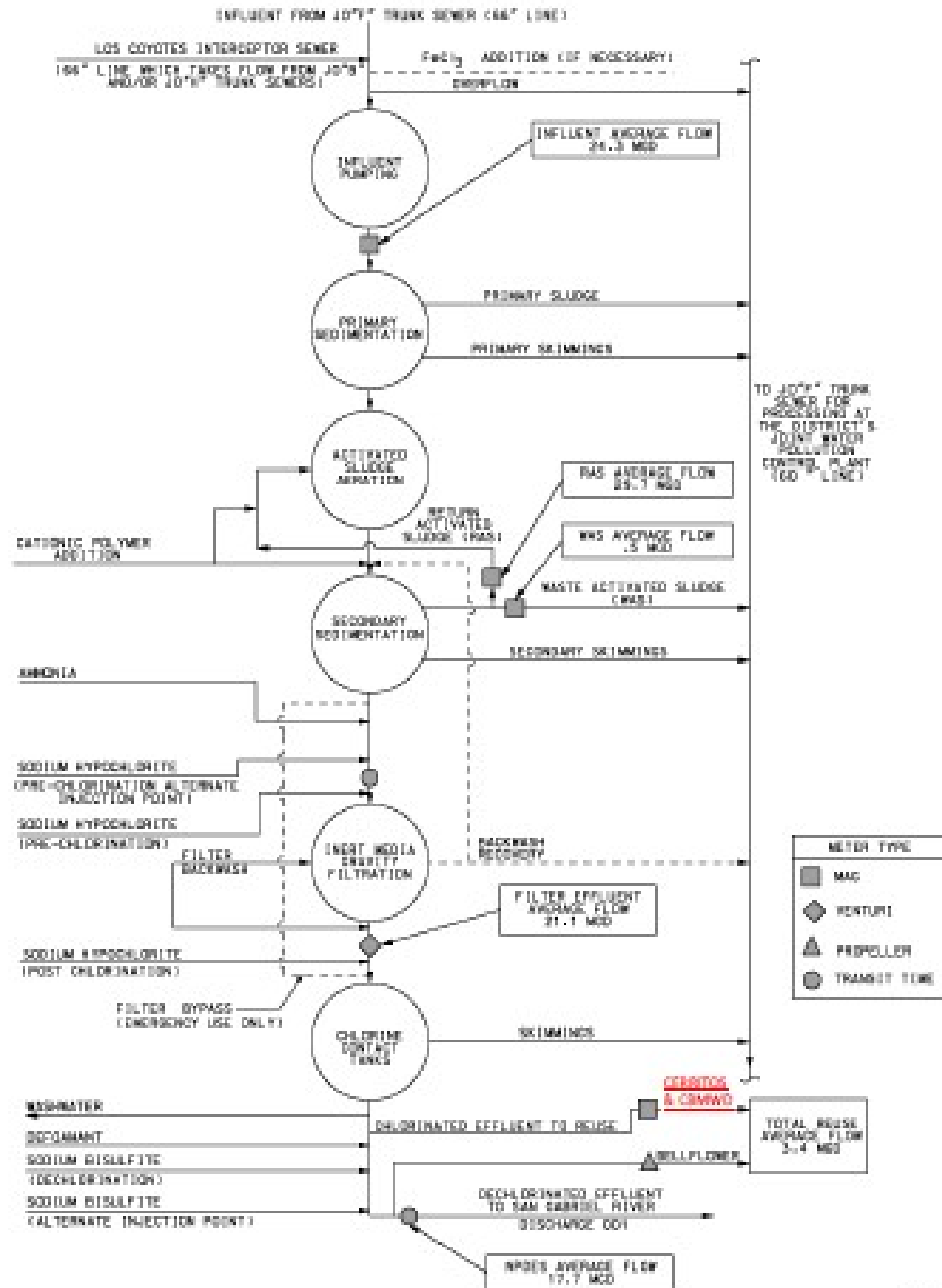
Sanitation Districts of Los Angeles County Recycled Water Users  
Handbook, September 2017

Cc (e-mail): Kurt Souza and Chi Diep, SWRCB DDW  
Sherly Rosilela, SWRCB DDW  
Jeong-Hee Lim, Los Angeles RWQCB  
Julio Lara, Santa Ana RWQCB  
Mark Smythe, Santa Ana RWQCB

FIGURE 1  
WATER RECYCLING PROGRAM ORGANIZATIONAL CHART



**FIGURE 2**  
**LOS COYOTES WATER RECLAMATION PLANT**  
**PROCESS SCHEMATIC**

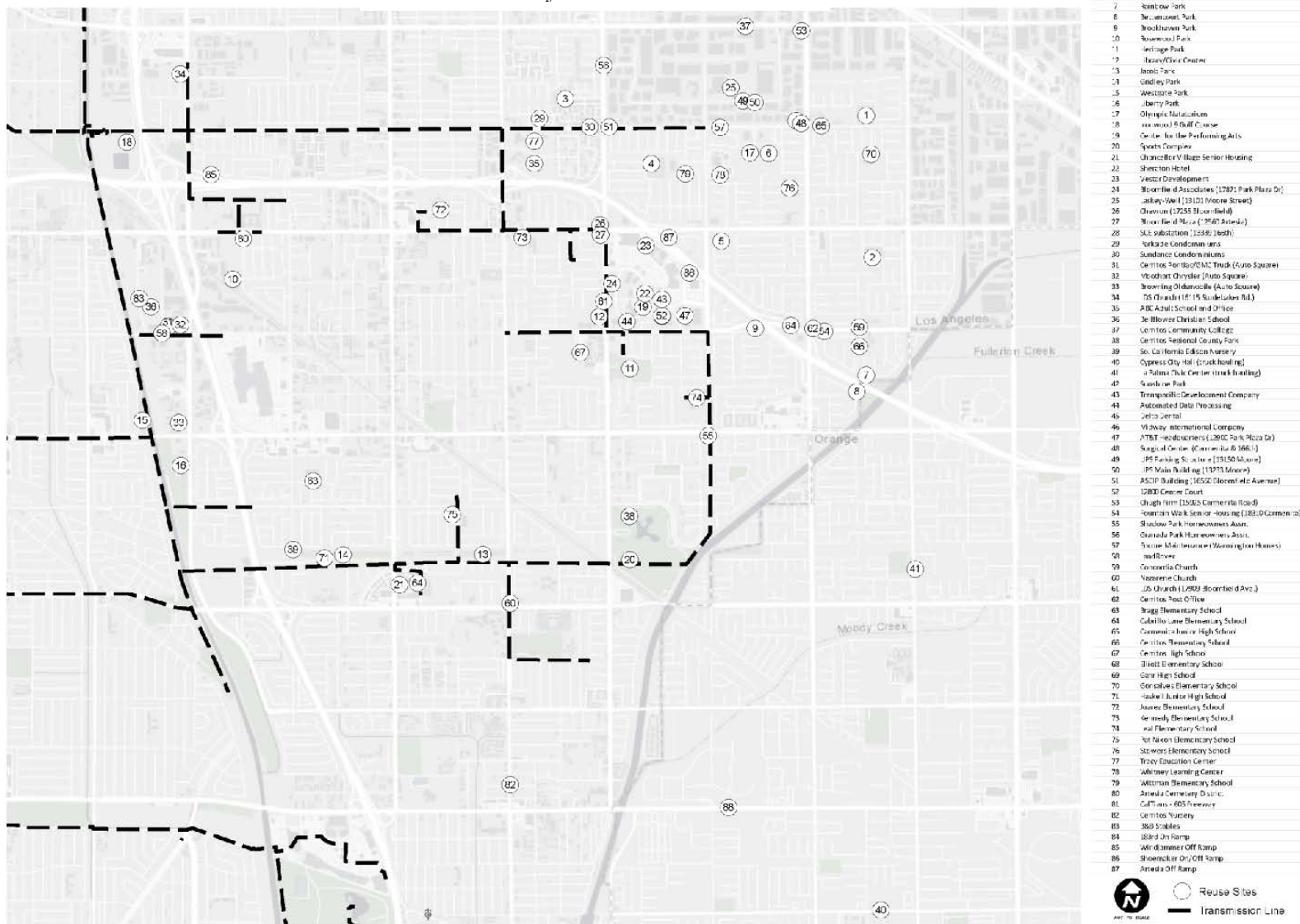


L:\ASSETS\TREATMENT\LOS COYOTES\WWS\AS-100000-101 WWS Schem. 000000 1011111000000-101

**FIGURE 3A: Reuse Site Location Map**  
**Los Coyotes WRP Reuse Sites**  
**City of Lakewood**



**FIGURE 3B: Reuse Site Location Map**  
**Los Coyotes WRP Reuse Sites**  
**City of Cerritos**





**FIGURE 3C: Reuse Site Location Map**  
Los Coyotes WRP Reuse Sites  
Central Basin Municipal Water District  
and City of Bellflower



Figure 4



Water Recycling Criteria

FIGURE 60310-A

County Sanitation Districts of Los Angeles County  
Los Coyotes Water Reclamation Plant Recycled Water Use  
**2016**

Central Basin Municipal Water District  
Century System  
(Page 1 of 5)

Liberty Utilities<sup>2</sup>

REUSE SITE	Recycled Water Delivered and Used <sup>1</sup> (million gallons)		Irrigable Area (acres)	Type of Use
	Daily Mean	Annual Total		
Andy's Nursery (1)	0.049	17.925	9	Ornamental Plants
Garcia's Nursery (127)	0	0	6	
CalTrans - 605 Fwy/Park'nRide (Foster/Behrans) (22)	0	0	14	Landscape Irrigation
CalTrans - 605/105 Interchange (Foster/Flatbush) (27)	0	0	22	
CalTrans - 710 Freeway at Rosecrans (59)	0.009	3.281	24.2	
CalTrans - 5 Freeway (Shoemaker/Firestone) (71)	0	0	0.8	
Hollywood Sports Center (formerly Bellflower Golf Course) (28)	0.002	0.656	22.5	
Norwalk Golf Course (120)	0.007	2.479	8	
Thompson Park (32)	0.022	8.189	15	
Zimmerman Park (66)	0.020	7.390	9.5	
Vista Verde Park (67)	0.020	7.140	6.5	
Gerdes Park (68)	0.019	6.929	8.6	
Woodruff Avenue medians (103)	0.005	1.700	0.8	
Foster Road medians (116)	0.002	0.742	0.3	
Foster Road Greenbelt (Flatbush/Halcourt) (133)	0.007	2.606	3.3	
McNabb landscaping (115)	0.0004	0.136	0.1	
Bellflower Storage (140)	0.002	0.840	3	
Nuffer Elementary School (82)	0.013	4.668	10.4	
Lampton Middle School (83)	0.006	2.248	9.5	Athletic Field Irrigation:
Hargitt Middle School (84)	0.010	3.593	9.5	
Norwalk Adult School (85)	0.016	5.772	17.2	Norwalk/La Mirada Unified School District
John Glenn High School (86)	0	0	38.8	
Romona Elementary School (87)	0.005	1.901	6.8	
New River Elementary School (88)	0.005	1.993	10.3	
<b>SUBTOTAL</b>	<b>0.219</b>	<b>80.188</b>	<b>256.1</b>	

Bellflower-Somerset Water Company

Bellflower High School (11)	0.072	26.418	28.4	Athletic Field Irrigation: Bellflower USD
Ernie Pyle Elementary School (12)	0.014	5.026	4.9	
Alondra median @ San Gabriel River (118)	0.001	0.204	0.1	Landscape Irrigation
Woodruff and Maple medians (163)	0.0003	0.095	0.1	
Simms Park (132)	0.017	6.094	12.5	
MTA Bike Trail (Woodruff/Fountain) (174)	0.006	2.158	0.1	
<b>SUBTOTAL</b>	<b>0.109</b>	<b>39.995</b>	<b>46.1</b>	

City of Norwalk

Ramona Park (76)	0.007	2.388	4.8	Landscape Irrigation
Morrison Elementary School (89)	0.010	3.627	7.7	Athletic Field
D.D. Johnston Elementary School (90)	0.014	4.979	8.9	Norwalk/La Mirada Unified School District
Corvallis Middle School (91)	0.013	4.646	16.9	
Norwalk High School (92)	0.041	14.873	35.1	
<b>SUBTOTAL</b>	<b>0.083</b>	<b>30.513</b>	<b>73.4</b>	

<sup>1</sup> Data supplied by Central Basin MWD. Recycled water is delivered via City of Cerritos pump station.

<sup>2</sup> Completed purchase of Park Water Company in January 2016.



County Sanitation Districts of Los Angeles County  
Los Coyotes Water Reclamation Plant Recycled Water Use  
2016

Central Basin Municipal Water District  
Century System  
(Page 2 of 5)

City of Downey

REUSE SITE	Recycled Water Delivered and Used <sup>1</sup> (million gallons)		Irrigable Area (acres)	Type of Use
	Daily Mean	Annual Total		
Gauldin Elementary School (9)	0.007	2,740	8.4	Athletic Field Irrigation: Downey Unified School District
Rio San Gabriel School (10)	0.020	7,202	14.8	
Lewis School (20)	0.008	2,869	4.6	
East Middle School (25)	0.014	4,990	26	
West Middle School (41)	0.022	7,903	19.5	
South Middle School (81)	0.020	7,441	15.8	
Carpenter Elementary School (74)	0.008	2,963	7.4	
Columbus High School (136)	0.019	6,916	25	
Wilderness Park (21)	0.089	32,557	24	Landscape  Irrigation
Crawford Park (35)	0.009	3,440	2.1	
Rio San Gabriel Park (24)	0.024	8,964	6.4	
Independence Park (60)	0.015	5,632	10.4	
Temple Park (102)	0.001	0,437	1	
Space Learning Center (166)	0	0	10.5	
Old Downey Cemetery (31)	0.019	6,949	7.5	
Rio Hondo Golf Course (65)	0.268	98,175	92.4	
CalTrans - 105 Freeway at Bellflower (33)	0	0	17.9	
CalTrans - 105 Freeway at Lakewood (37)	0.007	2,400	25	
Lakewood medians (Adoree to Telegraph) (150)	0.029	10,481	3.9	
Bellflower Blvd. medians (St. Horn Wy. to Stewart & Gray) (155)	0.006	2,284	0.3	
Stuart & Gray Road medians (161)	0.004	1,550	0.4	
Steve Horn Parkway medians (Kaiser Drive) (171)	0.033	12,129	1.4	
Steve Horn Parkway medians (Apollo Way)	0.001	0,394	0.2	
Foster Road/Premier Avenue median (116)	0.0002	0,055	0.1	
Firestone Blvd. medians (169)	0.003	1,260	0.1	
Rio Hondo Channel (131)	0.001	0,473	0.8	
Downey Studios (156)	0	0	1	
Kaiser Administration Bldg. (157)	0.002	0,817	2.5	
Cornerstone Commerce Center (167)	0.002	0,812	0.8	
CitiBank (8764 Firestone Blvd.) (170)	0.0005	0,177	0.1	
Walgreens/Big Lots (9018 Firestone Blvd.) (172)	0.002	0,743	0.4	
McDonalds (Lakewood and Gallatin) (179)	0.0002	0,086	0.1	
City Ventures Condo Complex (Gallatin/Florence) (180)	0.005	1,971	0.5	
Downey Commons (9516 Lakewood Blvd.) (182)	0.002	0,688	0.5	
Downey Crossroads (9515 Lakewood Blvd.) (183)	0.002	0,818	0.4	
8740 Firestone Blvd. (Firestone/Nash) (184)	0.001	0,183	0.2	
City Water Yard (9252 Stewart & Gray Road) (181)	0.0001	0,023	0.1	
Downey Promenade (south side of Apollo Way) (185)	0.006	2,335	2.0	
Downey Promenade (north side of Apollo Way) (186)	0.004	1,591	3.1	
Walmart (9001 Apollo Way) (190)	0.003	1,148	0.6	
Stonewood Mall (251 Stonewood St.) (191)	0.008	2,912	0.4	
Floor & Décor (8908 Apollo Way) (1874)	0.0002	0,071		Toilet
24-Hour Fitness (8810 Apollo Way) (188)	0.002	0,817		
Cinemark Theater (8840 Apollo Way) (189)	0.003	0,933		
Ulta Cosmetics (192)	0.0001	0,022		Flushing
T.J. Maxx/Homegoods (193)	0.0003	0,108		
Famous Footwear (195)	0	0		
Carters (194)	<0.0001	0,003		Ornamental Plants
Humedo Nursery (formerly Avila Nursery) (36)	0.005	1,867	11	
Palm Growers Nursery (117)	0	0	7.3	
<b>SUBTOTAL</b>	<b>0.678</b>	<b>248,329</b>	<b>356.9</b>	

<sup>1</sup> Data supplied by Central Basin MWD. Recycled water is delivered via City of Cerritos pump station.

Central Basin Municipal Water District  
Century System  
(Page 3 of 5)

## City of Santa Fe Springs

REUSE SITE	Recycled Water Delivered and Used <sup>1</sup> (million gallons)		Irrigable Area (acres)	Type of Use
	Daily Mean	Annual Total		
Lake Center Park (2)	0.032	11.818	8	Landscape Irrigation
Lakeview Park (14)	0.014	4.981	6.7	
Little Lake Park (79)	0.047	17.333	18	
Heritage Park (93)	0.011	3.931	9.2	
Los Nietos Park (96)	0.021	7.685	11.2	
Sculpture Garden (164)	0	0	0.6	
Clarkman Walkway (4)	0	0	0.1	
Towne Center Walkway (5)	0.0005	0.180	0.1	
Promenade Walkway (23)	0.002	0.785	0.3	
Norwalk Walkway and Parking Area (153)	0.002	0.556	1.0	
Town Center Green (16)	0.009	3.211	2.3	
Clark Estate (15)	0.007	2.687	4.3	
Aquatic Center (19)	0.005	1.715	0.5	
Police Services Center (18)	0.001	0.278	0.2	
Orr & Day Road medians (7)	0	0	0.1	
Florence Blvd. Medians @ Maidstone (8)	0.005	1.835	3.0	
Telegraph Road medians (13)	0.004	1.425	0.4	
Pioneer Road medians (17)	0.027	9.883	0.4	
Foster Road medians (165)	0.009	3.279	1	
Mora Drive medians (168)	0.007	2.564	0.1	
CalTrans - 605/5 Fwy at Florence/Dollison/Quinn (30)	0.001	0.209	24	
Heritage Corporate Center (106)	0.029	10.723	29.9	
Los Angeles County Vector Control Building (113)	0.002	0.857	3.8	
Greenstone Warehouse (114)	0.001	0.445	0.4	
Maruchi American (119)	0.001	0.460	0.4	
Soco-Lynch Corporation (121)	0.001	0.423	1	
MC & C Development (122)	0.007	2.660	0.7	
Golden Springs Business Park <sup>2</sup> (139)	0.106	38.771	31.4	
CDM building (143)	0.001	0.476	0.1	
Simon Trucking (147)	0.001	0.239	0.9	
Fed Ex (11720 Greenstone)	0.001	0.352		
Santa Fe High School (29)	0.027	9.996	14.5	
Lake Center School (3)	0.024	8.608	8	Athletic Field Irrigation
Lakeview Child Care Playground (6)	0.001	0.337	0.2	
Jersey Ave. School & S.F. Sprgs Athletic Fields (98)	0.010	3.760	8	
Tuftex Carpet Mill (38)	0.155	56.696	N/A	Carpet Dyeing
Air Products and Chemicals (8934 Dice Road)	0.258	94.518	N/A	
Robertson's Ready-Mix (Santa Fe Springs) (44)	0.006	2.084	N/A	Concrete Mixing
SUBTOTAL	0.835	305.760	190.8	

Data supplied by Central Basin MWD. Recycled water is delivered via City of Cerritos pump station.

<sup>2</sup> Formerly reported as two separate sites

N/A = not applicable.

County Sanitation Districts of Los Angeles County  
Los Coyotes Water Reclamation Plant Recycled Water Use  
2016

Central Basin Municipal Water District  
Century System  
(Page 4 of 5)

City of Paramount

REUSE SITE	Recycled Water Delivered and Used <sup>1</sup> (million gallons)		Irrigable Area (acres)	Type of Use
	Daily Mean	Annual Total		
CalTrans - S.E. 710/105 Interchange (45)	0.0003	0.117	18.5	Landscape
Downey Blvd./Contreras medians (46)	0.001	0.186	0.1	
Rosecrans/Paramount medians (63)	0.001	0.441	0.2	
Somerset median (64)	0.005	1.791	0.4	
Orange/Cortland Parkway (73)	0.002	0.574	1.3	
Alondra median (77)	0.008	2.973	0.6	
Rosecrans medians (109)	0.006	2.166	0.2	
Lakewood medians (123)	0.001	0.225	0.2	
Garfield medians (125)	0.002	0.592	0.1	
Orange Avenue medians (128)	0.002	0.848	0.1	
Paramount medians (175)	0.005	1.784		
Texaco/Somerset city lot (110)	0.001	0.302	0.2	Irrigation
End of San Luis @ flood control channel (134)	0.003	1.071	3	
Railroad Beautification (City of Paramount) (141)	0.001	0.241	0.3	
Compton Golf Course (47)	0.038	13.798	13	
Paramount Park (61)	0.017	6.333	9	
Steam Engine Park (70)	0.001	0.515	0.6	
Spane Park (72)	0.009	3.392	5	
Progress Park (124)	0.011	3.891	6.2	
Dills Park (159)	0.021	7.634	12.5	
Salud Park (178)	0.010	3.733	8.9	
McLane Mowers (111)	0	0	0.6	Athletic Field Irrigation:
Tays Cool Fuel (145)	0.002	0.583	0.3	
Paramount High School (62)	0.030	10.940	19	
Alondra Junior High School (48)	0.024	8.639	14	
Mokler Elementary School (49)	0.012	4.266	10	
Los Cerritos Elementary School (50)	0.010	3.577	8.6	
Wirtz Elementary School (51)	0.011	3.869	9	
Keppel Elementary School (52)	0.004	1.540	4	
Cleanwater Junior High School (69)	0.029	10.585	4	
Jefferson School (135)	0.001	0.440	0.5	Paramount Unified School District
Billy Lee Nursery (56)	0.007	2.741	2.5	
Belloso Farm Nursery (Paramount site) (94)	0	0	2.5	
Jauregui Nursery (105)	0.004	1.368	2	
ABC Nursery (112)	0	0	16	Ornamental Plant Irrigation
Alta Produce (100)	0.002	0.592	4	
Robertson's Ready-Mix (formerly Paramount Ready-Mix) (95)	0.017	6.318	N/A	Food Crop Irrigation
				Concrete Mixing
SUBTOTAL	0.295	108.065	177.4	

City of Lynwood

CalTrans - 105 Fwy. at Wright Road (57)	0	0	19.6	Landscape Irrigation
CalTrans - 710 Fwy. at M.L. King Blvd. (58)	0.007	2.726	15.5	
Imperial/Wright Road median (78)	0	0	0.2	
Ham Park (104)	0.005	2.000	10	
SUBTOTAL	0.013	4.726	45.3	

<sup>1</sup> Data supplied by Central Basin MWD. Recycled water is delivered via City of Cerritos pump station.

N/A = not applicable.

County Sanitation Districts of Los Angeles County  
Los Coyotes Water Reclamation Plant Recycled Water Use  
2016

Central Basin Municipal Water District  
Century System  
(Page 5 of 5)

City of South Gate

REUSE SITE	Recycled Water Delivered and Used <sup>1</sup> (million gallons)		Irrigable Area (acres)	Type of Use
	Daily Mean	Annual Total		
Circle Park (42)	0.012	4,251	4	Landscape Irrigation
Hollydale Park (43)	0.104	37,971	46	
Triangle Park (137)	0.003	0,969	0.4	
Los Angeles River Landscaping (146)	0	0	0.4	
Firestone Blvd. medians	0.006	2,342		
Atlantic Ave. medians (177)	0.005	1,820	16.3	
Walmart (4651 Firestone Blvd.)	0.001	0,263		
CVS Pharmacy (4621 Firestone Blvd.)	0.004	1,512		
Firestone Plaza 2 (4833 Firestone Blvd.)	0.003	0,915	1.7	
Pacific Alloy Casting (5900 Firestone Blvd.) (173)	0.007	2,593	N/A	Industrial Process
Imperial Equestrian Center (152)	0.006	2,088	1.5	Dust Control
Beloso Farm Nursery (South Gate site) (101)	0	0	2.5	Ornamental Plants
B & B Pallet Company (126)	0	0	N/A	
<b>SUBTOTAL</b>	<b>0.150</b>	<b>54,724</b>	<b>72.8</b>	

Golden State Water Company

Palms Park (34)	0.039	14,231	20	Landscape Irrigation
John Anson Ford County Regional Park (75)	0.060	21,984	45	
John Anson Ford Golf Course (80)	0	0	13.6	
Metropolitan State Hospital (129)	0	0	80	
Los Angeles County Records Office (144)	0.005	1,869	2.9	
Los Angeles County Library (149)	0.003	1,103	0.9	
Rio Hondo Channel - Bell Gardens (142)	0.002	0,609	2.5	
Metro State Hospital - Wheelabrator (129)	0.100	36,753	N/A	Cooling Towers
Palms Elementary School (39)	0.015	5,515	3.5	Athletic Field Irrigation: ABC Unified School Dist.
Artesia High School (40)	0.040	14,620	20.9	
Moffitt School (130)	0.007	2,486	1.6	
Hollydale Elementary (160)	0.004	1,462	3	
Bell Gardens Soccer Field (97)	0.006	2,242	2.6	Ornamental Plants
Pro Growers Nursery (158)	0.051	18,506	11.3	
<b>SUBTOTAL</b>	<b>0.332</b>	<b>121,380</b>	<b>207.8</b>	

Bellflower Municipal Water Systems

Beloso Farm Nursery (Bellflower site) (107)	0	0	8	Ornamental Plants
Zinn Park (26)	0.004	1,581	1.7	Landscape
Bellflower Boulevard medians (99)	0.003	0,960	0.3	Irrigation
Foster/Coldbrook median (148)	0.0002	0,080	0.1	
<b>SUBTOTAL</b>	<b>0.007</b>	<b>2,621</b>	<b>10.1</b>	

City of Vernon

Malburg Generation Station (161)	0.713	260,869	N/A	Cooling Towers
<b>SUBTOTAL</b>	<b>0.713</b>	<b>260,869</b>		

County of Los Angeles Parks and Recreation

Los Amigos Golf Course (176)	0.178	65,156	110	Landscape Irrigation
<b>SUBTOTAL</b>	<b>0.178</b>	<b>65,156</b>	<b>110</b>	

Century Recycled Water Distribution System

<b>TOTAL</b>	<b>3.613</b>	<b>1322,326</b>	<b>1,546.7</b>	
--------------	--------------	-----------------	----------------	--

<sup>1</sup> Data supplied by Central Basin MWD. Recycled water is delivered via City of Cerritos pump station.

N/A = not applicable.

**MONITORING AND REPORTING PROGRAM  
ORDER NO. WQ 2016-0068-RB4-CI-6182  
FOR  
THE JOINT OUTFALL SYSTEM  
LOS COYOTES WATER RECLAMATION PLANT**

This monitoring and reporting program (MRP) describes requirements for monitoring the recycled water program for the Los Coyotes WRP. California Water Code (CWC) sections 13267 and 13383 authorize the Los Angeles Regional Water Quality Control Board (Regional Water Board) to establish monitoring, inspection, entry, reporting, and recordkeeping requirements. This MRP establishes monitoring, reporting, and recordkeeping requirements that implement California laws and/or regulations. The Administrator shall not implement any changes to this MRP unless and until a revised MRP is issued by the Regional Water Board Executive Officer, or his designee.

The State Water Resources Control Board (State Water Board) and Regional Water Boards are transitioning to the paperless office system. During the life of this General Order, the State Water Board or Regional Water Board may require the Administrator to electronically submit reports using the State Water Board's GeoTracker database in portable document format (PDF). In addition, analytical data shall be uploaded to the GeoTracker database under a site-specific global identification number. GeoTracker database is available at: <https://geotracker.waterboards.ca.gov/esi/login.asp>.

The Administrator has applied for and received coverage for the recycled water program subject to the notice of applicability (NOA) of Water Quality Order 2016-0068-DDW. The reports are necessary to ensure the Administrator complies with the NOA and the State Water Board Water Quality Order No. WQ 2016-0068-DDW, Water Reclamation Requirements for Recycled Water Use (hereafter, General Order). Pursuant to California Water Code section 13267 and 13383, the Administrator shall implement this MRP and shall submit monitoring reports described herein.

All samples shall be representative of the volume and nature of the discharge or matrix of material sampled. The name of the sampler, sample type (grab or composite), time, date, location, bottle type, and any preservative used for each sample shall be recorded on the sample chain of custody form. The chain of custody form must also contain all custody information including date, time, and to whom samples were relinquished. For composite samples, the basis for sampling (time or flow weighted) shall be per MRP or approved by Regional Water Board staff.

Field test instruments (such as those used to test pH, dissolved oxygen, and electrical conductivity) may be used provided that they are used by a California Environmental Laboratory Program (ELAP) certified laboratory or:

1. The user is trained in proper use and maintenance of the instruments.
2. The instruments are field calibrated prior to monitoring events at the frequency recommended by the manufacturer.

3. Instruments are serviced by the manufacturer or authorized representative at the recommended frequency.
4. Field calibration reports are maintained and available for at least three years.

## RECYCLED WATER MONITORING

The Administrator shall monitor the recycled water produced by Los Coyotes WRP for the constituents listed in the table below. This monitoring requirements may duplicate existing requirements under Waste Discharge Requirements R4-2015-0124 (NPDES Permit No. CA0054011) and subsequent renewed NPDES permits. Duplication of sampling and monitoring activities are not required if the monitoring activity satisfies the requirements of this order. In addition to submitting the results under another order, the results shall be submitted in the reports required by this General Order.

Constituent	Units	Sample Type	Minimum Sampling Frequency	Reporting Frequency
Total Dissolved Solids	mg/L	24-hr composite	monthly	quarterly
Chloride	mg/L	24-hr composite	monthly	quarterly
Sulfate	mg/L	24-hr composite	monthly	quarterly
Boron	mg/L	24-hr composite	monthly	quarterly
Total Nitrogen	mg/L	24-hr composite	monthly	quarterly
Total Phosphorus	mg/L	24-hr composite	monthly	quarterly
Total Potassium	mg/L	24-hr composite	monthly	quarterly

## DISINFECTION SYSTEM MONITORING

The Administrator shall collect representative samples of recycled water downstream of the disinfection system. Should there be any change in the sampling station, the proposed station shall be approved by the Executive Officer prior to use. This monitoring requirements may duplicate existing requirements under Waste Discharge Requirements R4-2015-0124 (NPDES Permit No. CA0054011) and subsequent renewed NPDES permits. Duplication of sampling and monitoring activities are not required if the monitoring activity satisfies the requirements of this order. In addition to submitting the results under another order, the results shall be submitted in the reports required by this General Order. The Administrator shall monitor the following parameters:

Constituent/ Parameter	Units	Sample Type	Minimum Sampling Frequency	Reporting Frequency
Total Coliform Bacteria	MPN/100 mL <sup>1</sup>	grab	daily <sup>2</sup>	quarterly
Turbidity	NTU <sup>3</sup>	meter	continuous <sup>4</sup>	quarterly
Chlorine disinfection contact time (CT)	mg-min/L	calculated	continuous	quarterly

Report treatment plant operational problems or any other factors resulting in off-spec recycled water production (e.g. turbidity exceedances, inadequate CT, exceedance in total coliform counts) and all corrective actions to the Los Angeles Regional Board, Santa Ana Water Board, and DDW within 48 hours of knowledge. Indicate if distribution of improperly treated recycled water take place and describe all actions taken to prevent the use of improperly treated recycled water reaching recycled water users, including all notifications.

## **VOLUMETRIC REPORTING**

State Water Resources Control Board Order No. WQ 2019-0037-EXEC requires wastewater treatment plants and recycled water producers to annually report the information listed in the section 3 of the Water Quality Control Policy for Recycled Water (Recycled Water Policy). The Administrator is a recycled water producer and is subject to Order No. WQ 2019-0037-EXEC and should carry out volumetric reporting requirement as specified in that order.

## **USE AREA MONITORING**

The Administrator shall monitor use areas(s) at a frequency appropriate to determine compliance with the General Order and the Administrator's recycled water use program requirements. An Administrator may assign monitoring responsibilities to a User as part of the Water Recycling Use Permit program; the Administrator retains responsibility to ensure the data is collected, as well as to prepare and submit the annual report.

---

<sup>1</sup> MPN/100mL denotes most probable number per 100 milliliter sample.

<sup>2</sup> Daily grab samples shall be collected at a station downstream of the disinfection system (designated monitoring location) at least once daily. Report rolling 7-day median and maximum values.

<sup>3</sup> NTU denotes nephelometric turbidity unit.

<sup>4</sup> Pursuant to Title 22 section 60321(b), if continuous turbidity meter and recorder fail, grab sampling at a minimum frequency of 1.2-hours may be substituted for a period of up to 24-hours. Notify the Regional Water Board if a longer grab sampling period is necessary.

The following shall be recorded for each user with additional reporting for use areas as appropriate. The frequency of use area observations shall be based on the complexity and risk of each use area. Use areas may be aggregated to combine acreage for calculation or observation purposes. Use area monitoring shall include the following parameters:

Parameter	Units	Sample Type	Sample Frequency	Reporting Frequency
Recycled Water User	--	--	--	quarterly
Recycled Water Flow	gpd <sup>5</sup>	meter <sup>6</sup>	monthly	quarterly
Acreage Applied <sup>7</sup>	acres	calculated	monthly	quarterly
Application Rate	inches/acre/year	calculated	monthly	quarterly
Soil Saturation/Ponding	--	observation	quarterly	annually
Nuisance Odors/Vectors	--	observation	quarterly	annually
Discharge Off-Site	--	observation	quarterly	annually
Notifications Signs <sup>8</sup>	--	observation	quarterly	annually

## REPORTING

In reporting monitoring data, the Administrator shall submit the report in similar format as reports submitted for the Los Angeles Regional Board Order No. 87-051 and Los Angeles Regional Board Order No. 97-072 by arranging the data in tabular form so that the date, data type (e.g., flow rate, bacteriological, etc.), and reported analytical or visual inspection results are readily discernible. In addition, data shall be summarized to illustrate compliance with the General Order and NOA as applicable. The results of any monitoring done more frequently than required at the locations specified in the MRP shall be reported in the next regularly scheduled monitoring report and shall be included in calculations as appropriate.

The Administrator shall electronically submit reports using the State Water Board's GeoTracker database in portable document format (PDF). Upon approval of this NOA, the Administrator shall submit reports to GeoTracker. GeoTracker database is available at: <https://geotracker.waterboards.ca.gov/esi/login.asp>.

<sup>5</sup> gpd denotes gallons per day

<sup>6</sup> Meter requires meter reading or other approved method such as tank volume.

<sup>7</sup> Acreage applied denotes the acreage to which recycled water is applied.

<sup>8</sup> Notification signs shall be consistent with the requirements of Title 22, section 60310(g).



## MONITORING REPORTS AND REPORTING SCHEDULE

Monitoring periods and reporting for all required monitoring shall be completed according to the following schedule:

Sampling Frequency	Monitoring Period Begins On	Monitoring Period	SMR Due Date
Continuous	Permit effective date	All	Submit with quarterly SMR
Daily	Permit effective date	(Midnight through 11:59 PM) or any 24-hour period that reasonably represents a calendar day for purposes of sampling.	Submit with quarterly SMR
Monthly	First day of calendar month following permit effective date or on permit effective date if that date is first day of the month	1 <sup>st</sup> day of calendar month through last day of calendar month	Submit with quarterly SMR
Quarterly	Closest of January 1, April 1, July 1, or October 1 following (or on) permit effective date	January 1 through March 31 April 1 through June 30 July 1 through September 30 October 1 through December 31	June 15 September 15 December 15 March 15
Annually	January 1 following (or on) permit effective date	January 1 through December 31	April 1

### Total Dissolved Solids (TDS) Offset Report

1. Submit within 90-days of the effective date of this NOA a Final TDS Offset Plan for approval by the Executive Officer of the Santa Ana Water Board.
2. Submit by **April 30** of each year a TDS Offset Report that demonstrates that the Administrator has complied with the TDS effluent limit and include pertinent details such as TDS/flow data tables, equations, computational results, and conclusions and a TDS Offset Report transmittal letter that includes the same penalty of perjury statement required for the submittal of the annual monitoring report and shall be signed by the Administrator or the Administrator's authorized agent.

## Annual Report

Annual Reports shall be submitted to the Regional Water Board by April 1<sup>st</sup> following the monitoring year. The first Annual Report is due on **April 1, 2021**, and shall include the following:

1. A summary table of all recycled water users and use areas. Maps are to be included to identify use areas. Newly permitted recycled water Users and use areas shall be identified. When applicable, any supplements to the Title 22 Engineering Report and the corresponding State Water Board/Regional Water Board approval letter supporting those additions shall be included.
2. A summary table of all inspections and enforcement activities initiated by the Administrator. Include a discussion of compliance and the corrective action taken, as well as any planned or proposed actions needed to bring the discharge and distribution into compliance with the NOA and/or General Order. Copies of any enforcement actions taken by the Administrator shall be provided.
3. An evaluation of the performance of the recycled water treatment facility, including discussion of capacity issues, treatment and distribution system problems, and a forecast of the flows anticipated in the next year.
4. Tabular and graphical summaries of all monitoring data collected during the year, including a summary of treatment plant effluent exceedances with associated corrective actions taken. Indicate if distribution of improperly treated recycled water take place and describe all actions taken to prevent the use of improperly treated recycled water reaching recycled water users, including all notifications.
5. The name and contact information for the recycled water operator responsible for operation, maintenance, and system monitoring.

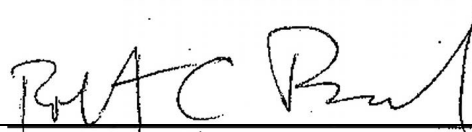
A letter transmitting the annual report shall accompany each report. The letter shall summarize the numbers and severity of violations found during the reporting period, and actions taken or planned to correct the violations and prevent future violations. The transmittal letter shall contain the following penalty of perjury statement and shall be signed by the Administrator or the Administrator's authorized agent:

"I certify under penalty of law that I have personally examined and am familiar with the information submitted in this document and all attachments and that, based on my inquiry of the those individuals immediately responsible for obtaining the information, I believe that the information is true, accurate, and complete. I am aware that there are significant penalties for submitting false information, including the possibility of fine and imprisonment."

MRP NO. WQ-2016-0068-RB4-CI-6182  
JOINT OUTFALL SYSTEM  
1 MAY 2020

The Administrator shall implement the above monitoring program as of the date of this MRP.

Ordered by:

A handwritten signature in black ink, appearing to read "RWAC Brown", is written over a horizontal line.

Robert Brownwood  
Assistant Deputy Director

May 1, 2020

Date

## Enclosures:

State Water Resources Control Board Order WQ 2016-0068-DDW, Water Reclamation Requirements for Recycled Water Use.

[https://www.waterboards.ca.gov/board\\_decisions/adopted\\_orders/water\\_quality/2016/wqo2016\\_0068\\_ddw.pdf](https://www.waterboards.ca.gov/board_decisions/adopted_orders/water_quality/2016/wqo2016_0068_ddw.pdf)

Recycled Water Operation and Management Plan Joint Outfall System Sanitation Districts of Los Angeles County Recycled Water Users Handbook, September 2017.

<https://www.lacsd.org/civicax/filebank/blobdload.aspx?blobid=6741>