



California Regional Water Quality Control Board

Los Angeles Region



Recipient of the 2001 *Environmental Leadership Award* from Keep California Beautiful

Linda S. Adams
Agency Secretary

320 W. 4th Street, Suite 200, Los Angeles, California 90013
Phone (213) 576-6600 FAX (213) 576-6640 - Internet Address: <http://www.waterboards.ca.gov/losangeles>

CK
Arnold Schwarzenegger
Governor

November 28, 2007

CERTIFIED MAIL No.: 7002 0860 0004 5295 7281
RETURN RECEIPT REQUESTED

Mr. Eric Verner, Engineering Supervisor
Vopak Terminal Los Angeles Inc.
401 Canal Street
Wilmington, CA 90744

Dear Mr. Verner:

COVERAGE UNDER GENERAL NATIONAL POLLUTANT DISCHARGE ELIMINATION SYSTEM AND WASTE DISCHARGE REQUIREMENTS—VOPAK TERMINAL LOS ANGELES INC., TANK 105, 2200 EAST PACIFIC COAST HIGHWAY, WILMINGTON, CALIFORNIA (NPDES NO. CAG674001, CI-9345)

We have completed our review of your application for a permit to discharge hydrostatic testing water under a General National Pollutant Discharge Elimination System (NPDES).

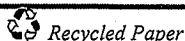
Based on the attached Fact Sheet and other information provided, we have determined that the wastewater discharge meets the conditions to be regulated under Order No. R4-2004-0109, *General National Pollutant Discharge Elimination System and Waste Discharge Requirements for Discharges of Low Threat Hydrostatic Test Water to Surface Waters in Coastal Watersheds of Los Angeles and Ventura Counties*, adopted by this Board on July 1, 2004.

Enclosed are your Waste Discharge Requirements, which also serve as your NPDES permit, consisting of Order No. R4-2004-0109 and Monitoring and Reporting Program No. CI-9345. Prior to starting discharge, a representative sample of the effluent shall be obtained and analyzed to determine compliance with the discharge limitations. The wastewater flows into the local storm drains tributary to the Dominguez Flood Control Channel, therefore, discharge limitations in Attachment B are not applicable to your discharge.

The Monitoring and Reporting Program requires you to implement the monitoring program on the effective date of this permit. All monitoring reports should be sent to the Regional Board, ATTN: Information Technology Unit. When submitting monitoring or technical reports to the Regional Board per these requirements, please include a reference to "Compliance File No. CI-9345 NPDES No. CAG674001", which will assure that the reports are directed to the appropriate file and staff. Also, please do not combine other reports with your monitoring reports. Submit each type of report as a separate document.

In order to avoid future annual fees, please submit written notification when the project has been completed and the permit is no longer needed.

California Environmental Protection Agency



Our mission is to preserve and enhance the quality of California's water resources for the benefit of present and future generations.

Mr. Eric Verner
Vopak Terminal Los Angeles, Inc.

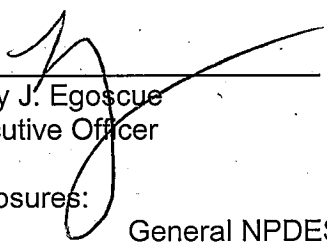
- 2 -

November 28, 2007

We are sending a copy of Order No. R4-2004-0109 only to the applicant. For those on the mailing list, please refer to the Board Order sent to you previously. A copy of the Order will be furnished to anyone who requests it.

If you have any questions, please contact Gensen Kai at (213) 576-6651.

Sincerely,



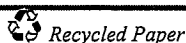
Tracy J. Egoscue
Executive Officer

Enclosures:

General NPDES No. CAG674001, Order No. R4-2004-0109
Fact Sheet
Monitoring and Reporting Program No. CI-9345

cc: U.S. Environmental Protection Agency, Region 9, Clean Water Act Standards
and Permits (WTR-5)
U.S. Army Corps of Engineers
NOAA, National Marine Fisheries Service
Philip Isorena, SWRCB, NPDES Unit
Department of Interior, U.S. Fish and Wildlife Service
California Department of Fish and Game, Region 5
California Department of Health Services, Environmental Branch
Los Angeles County, DPW, Environmental Programs Division
Los Angeles County, Department of Health Services
Los Angeles County Sanitation District
City Manager, City of Wilmington
Jae Lim, Tetrattech

California Environmental Protection Agency



Our mission is to preserve and enhance the quality of California's water resources for the benefit of present and future generations.

STATE OF CALIFORNIA
CALIFORNIA REGIONAL WATER QUALITY CONTROL BOARD
LOS ANGELES REGION
320 West 4th Street, Suite 200, Los Angeles, California 90013

**FACT SHEET
WASTE DISCHARGE REQUIREMENTS
FOR
VOPAK TERMINAL LOS ANGELES INC.
(TANK 105)**

**NPDES NO. CAG674001
CI-9345**

FACILITY ADDRESS

2200 E. Pacific Coast Highway
Wilmington, California

FACILITY MAILING ADDRESS

401 Canal Street
Wilmington, CA 90744

PROJECT DESCRIPTION:

Vopak Terminal Los Angeles Inc. (Discharger) proposes to discharge hydrostatic testing water from a storage tank, Tank 105, located at 2200 East Pacific Coast Highway, Wilmington, California.

VOLUME AND DESCRIPTION OF DISCHARGE:

Up to 0.9 million gallons of hydrostatic testing water will be discharged to the Dominguez Flood Control Channel (Latitude: 33° 47' 27", Longitude: 118° 13' 46"), a water of the United States. The discharge will occur over a period of seven days. Prior to the hydrostatic testing, the tank will be cleaned thoroughly. Discharger will use potable water during the hydrostatic testing. Prior to the discharge, testing water will be sampled and confirmed to comply with the General NPDES discharge limitations. Residual water from the tank cleaning process and top water in the testing that may contain trace petroleum hydrocarbons will be discharged to a treatment system in the facility which is regulated under another NPDES permit.

APPLICABLE EFFLUENT LIMITATIONS

Based on the information provided in the NPDES Application Supplemental Requirements, the following constituents listed in the Table below have been determined to show reasonable potential to exist in the discharge. The discharge flows into the Laguna Dominguez Flood Control Channel, which is not designated as Municipal and Domestic Supply (MUN) beneficial use. Therefore, the discharge limitations under "Other Waters" column apply to the discharge.

This Table lists the specific constituents and effluent limitations applicable to the discharge.

Constituents	Units	Discharge Limitations	
		Daily Maximum	Monthly Average
Total Suspended Solids	mg/L	150	50
Turbidity	NTU	150	50
BOD ₅ 20°C	mg/L	30	20
Oil and Grease	mg/L	15	10
Settleable Solids	ml/L	0.3	0.1
Total Residual Chlorine	mg/L	0.1	N/A

FREQUENCY OF DISCHARGE:

Discharge from the hydrostatic testing of Tank 105 will be intermittent.

REUSE OF WATER:

Reuse of water at the facility for irrigation and dust control were evaluated. Due to short duration of the discharge and the inability to reuse the testing water economically, the wastewater will be discharged to the storm drain in accordance with the attached Order.

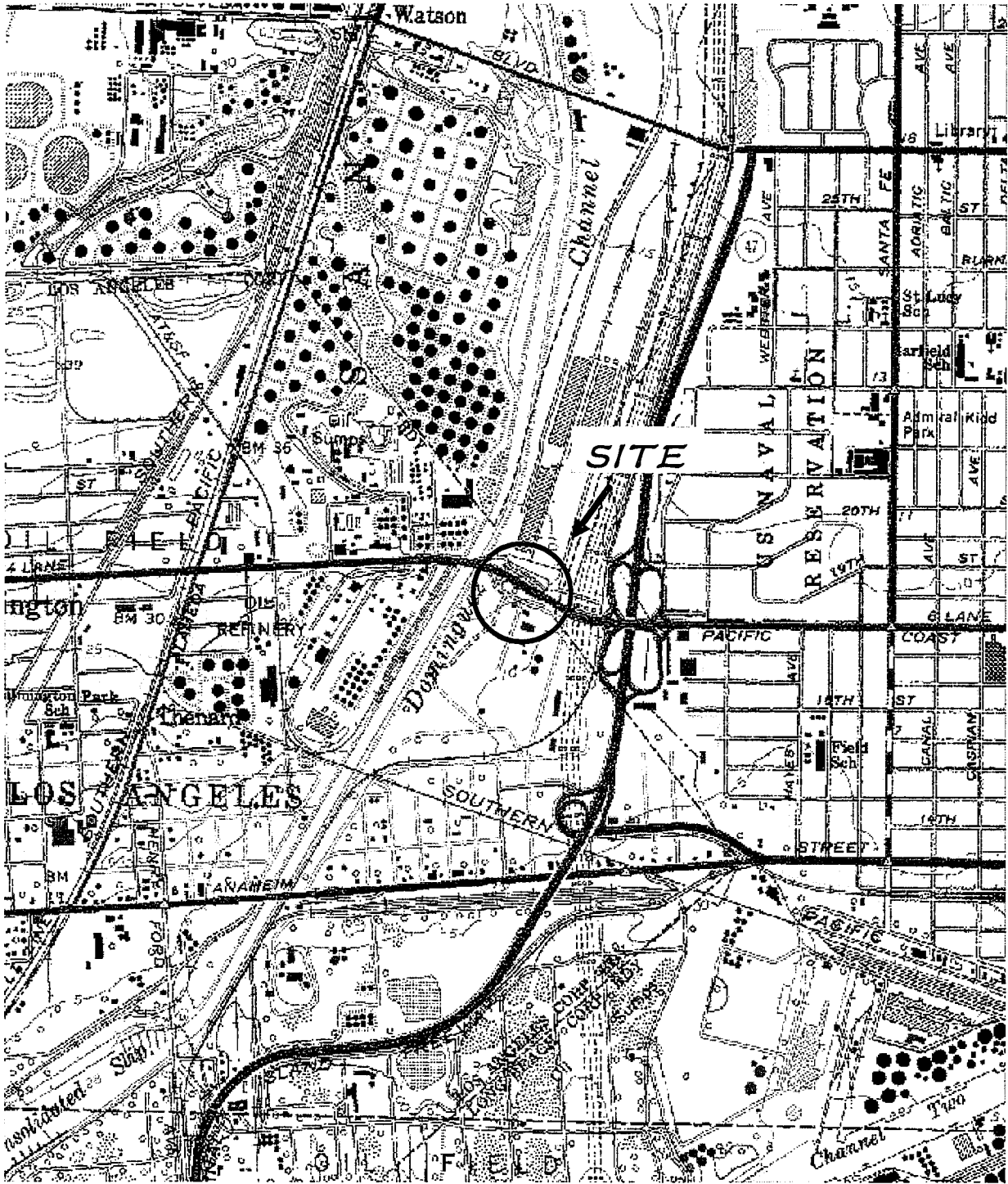


Figure 1. Site Location

STATE OF CALIFORNIA
CALIFORNIA REGIONAL WATER QUALITY CONTROL BOARD
LOS ANGELES REGION

MONITORING AND REPORTING PROGRAM NO. CI-9345
FOR
VOPAK TERMINAL LOS ANGELES INC.
(TANK 105)

(NPDES NO. CAG674001, SERIES NO. 028)

I. REPORTING REQUIREMENTS

- A. The discharger shall implement this monitoring program on the effective date of this permit. The discharger shall submit monitoring reports to the Regional Board by the dates in the following schedule:

<u>Reporting Period</u>	<u>Report Due</u>
January - March	May 15
April - June	August 15
July - September	November 15
October - December	February 15

- B. The first monitoring report under this Program is due by February 15, 2008. The annual summary report, shall contain a discussion of the previous year's effluent monitoring data, as well as graphical and tabular summaries of the data. If there is no discharge during any reporting period, the report shall so state.
- C. All monitoring reports shall include the discharge limitations in the Order, tabulated analytical data, the chain of custody form, and the laboratory report (including but not limited to date and time of sampling, date of analyses, method of analysis and detection limits).
- D. Each monitoring report shall contain a separate section titled "Summary of Non-compliance" which discusses the compliance record and corrective actions taken or planned that may be needed to bring the discharge into full compliance with waste discharge requirements. This section shall clearly list all non-compliance with waste discharge requirements, as well as all excursions of effluent limitations.
- E. Before commencing a new discharge, a representative sample of the effluent shall be obtain and analyzed for toxicity, and for all the constituents listed in E.1 and Attachment B of Order No. R4-2004-0109, and test results must meet all applicable discharge limitations.

II. SAMPLE COLLECTION REQUIREMENTS (AS APPROPRIATE)

- A. Daily samples shall be collected each day.
- B. Weekly samples shall be collected on a representative day of each week.
- C. Monthly samples shall be collected on a representative day of each month.
- D. Quarterly samples shall be collected in February, May, August, and November.
- E. Semi-annual samples shall be collected in May and November.
- F. Annual samples shall be collected in November.
- G. Once per discharge event sampling shall be collected at the beginning of the discharge.

III. EFFLUENT MONITORING REQUIREMENTS

- A. Sampling station(s) shall be established at the discharge point and shall be located where representative samples of the effluent can be obtained. Provisions shall be made to enable visual inspections before discharge. In the event of presence of oil sheen, debris, and/or other objectionable materials or odors, discharge shall not commence until compliance with the requirements is demonstrated. All visual observations shall be included in the monitoring report.
- B. If any constituent exceeds the limit in Order R4-2004-0109 during any monitoring event, the discharge shall be terminated and shall only be resumed after remedial measures have been implemented and full compliance with the requirements has been ascertained.
- C. In addition, as applicable, following an effluent limit exceedance, the discharger shall implement the following accelerated monitoring program:
 - 1. Monthly monitoring shall be increased to weekly monitoring,
 - 2. Quarterly monitoring shall be increased to monthly monitoring,
 - 3. Semi-annually monitoring shall be increased to quarterly, and
 - 4. Annually monitoring shall be increased to semi-annually.

If three consecutive accelerated monitoring events show full compliance with effluent limits, the discharger may return to the regular monitoring frequency, with the approval of the Executive Officer of the Regional Board.

D. The following shall constitute the discharge monitoring program:

Constituent	Unit	Sample Type	Minimum Frequency of Analysis
Flow	gal/day	totalizer	Continuously*
pH	pH units	grab	once per discharge event
Total Suspended Solids	mg/L	grab	once per discharge event
Turbidity	NTU	grab	once per discharge event
BOD ₅ 20°C	mg/L	grab	once per discharge event
Oil and Grease	mg/L	grab	once per discharge event
Settleable Solids	ml/L	grab	once per discharge event
Total Residual Chlorine	mg/L	grab	once per discharge event
Acute Toxicity	% survival	grab	annually

* Record the monthly total flow and report the calculated daily average flow and monthly flow in the quarterly and annual reports, as appropriate.

IV. EFFLUENT TOXICITY TESTING

- A. The discharger shall conduct acute toxicity testing tests on 100% effluent grab samples by methods specified in 40 CFR Part 136 which cites USEPA's *Methods for Measuring the Acute Toxicity of Effluents and Receiving Water to Freshwater and Marine Organisms*, October 2002, (EPA/821-R-02-012) or a more recent edition. Submission of bioassay results should include the information noted on pages 109-113 of the EPA/821-R-02-012 document.
- B. The fathead minnow, *Pimephales promelas*, shall be used as the test species for fresh water discharges and the topsmelt, *Atherinops affinis*, shall be used as the test species for brackish discharges. The method for topsmelt is found in USEPA's *Short-term Methods for Estimating the Chronic Toxicity of Effluents and Receiving Waters to West Coast Marine and Estuarine Organisms, First Edition, August 1995, (EPA/600/R-95-136)*.
- C. If the results of the toxicity test yield a survival of less than 90%, then the frequency of analyses shall increase to monthly until at least three test results have been obtained and full compliance with effluent limitations has been demonstrated, after which the frequency of analyses shall revert to annually. Results of toxicity tests shall be included in the first monitoring report following sampling.

V. GENERAL PROVISIONS FOR REPORTING

- A. The discharger shall inform this Regional Board 24 hours before the start of the discharge.

- B. All chemical, bacteriological, and toxicity analyses shall be conducted at a laboratory certified for such analyses by the California Department of Health Services Environmental Laboratory Accreditation Program (ELAP) or approved by the Executive Officer. A copy of the laboratory certification shall be provided with the first monitoring report and each time a new certification and/or renewal is obtained from ELAP.
- C. Samples must be analyzed within allowable holding time limits as specified in 40 CFR Part 136.3. Proper chain of custody procedures must be followed and a copy shall be submitted with the report.
- D. The monitoring report shall specify the USEPA analytical method used, the Method Detection Limit (MDL) and the Minimum Level (ML¹) for each pollutant. For the purpose of reporting compliance with numerical limitations, performance goals, and receiving water limitations, analytical data shall be reported with one of the following methods, as the case may be:
 - 1. An actual numerical value for sample results greater than or equal to the ML; or
 - 2. "Detected, but Not Quantified (DNQ)" if results are greater than or equal to the laboratory's MDL but less than the ML. The estimated² chemical concentration of the sample shall also be reported; or
 - 3. "Not-Detected (ND)" for sample results less than the laboratory's MDL with the MDL indicated for the analytical method used.

The ML employed for an effluent analysis shall be lower than the permit limit established for a given parameter, unless the Discharger can demonstrate that a particular ML is not attainable and obtains approval for a higher ML from the Executive Officer. At least once a year, the Discharger shall submit a list of the analytical methods employed for each test and the associated laboratory quality assurance/quality control procedures.

VI. NOTIFICATION

- A. The discharger shall notify the Executive Officer in writing prior to discharge of any chemical which may be toxic to aquatic life. Such notification shall include:
 - 1. Name and general composition of the chemical,
 - 2. Frequency of use,
 - 3. Quantities to be used,
 - 4. Proposed discharge concentrations and,
 - 5. EPA registration number, if applicable.

¹ The minimum levels are those published by the State Water Resources Control Board in the *Policy for the Implementation of Toxics Standards for Inland Surface Waters, Enclosed Bays, and Estuaries of California*, March 2, 2000, see attached Appendix A.

² Estimated chemical concentration is the estimated chemical concentration that results from the confirmed detection of the substance by the analytical method below the ML value.

No discharge of such chemical shall be made prior to obtaining the Executive Officer's approval.

- B. The discharger shall notify the Regional Board via telephone and/or fax within 24 hours of noticing an exceedance above the effluent limits in Order No. R4-2004-0109. The discharger shall provide to the Regional Board within 14 days of observing the exceedance a detailed statement of the actions undertaken or proposed that will bring the discharge into full compliance with the requirements and submit a timetable for correction.

VII. MONITORING FREQUENCIES

Monitoring frequencies may be adjusted by the Executive Officer to a less frequent basis if the Discharger makes a request and the request is backed by statistical trends of monitoring data submitted.

Ordered by:



Tracy J. Egoscue
Executive Officer

Date:

November 28, 2007