



Linda S. Adams  
Agency Secretary

# California Regional Water Quality Control Board

## Los Angeles Region

UBC



Over 51 Years Serving Coastal Los Angeles and Ventura Counties

Recipient of the 2001 *Environmental Leadership Award* from Keep California Beautiful

Arnold Schwarzenegger  
Governor

320 W. 4th Street, Suite 200, Los Angeles, California 90013  
Phone (213) 576-6600 FAX (213) 576-6640 - Internet Address: <http://www.swrcb.ca.gov/rwqcb4>

February 27, 2008

Mr. Robert J. DiPrimio  
Valencia Water Company  
24631 Avenue Rockefeller  
Los Angeles, CA 90054

Certified Mail  
Return Receipt Requested  
Claim No. 7007 0710 0003 2453 2234

Dear Mr. DiPrimio:

**COVERAGE UNDER GENERAL NATIONAL POLLUTANT DISCHARGE ELIMINATION SYSTEM AND WASTE DISCHARGE REQUIREMENTS—VALENCIA WATER COMPANY, WELL NO. W9, 2500 DECORO DRIVE, VALENCIA, CALIFORNIA (NPDES NO. CAG994003, CI—9382)**

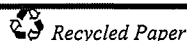
We have completed our review of your application for a permit to discharge wastewater under the National Pollutant Discharge Elimination System (NPDES).

Based on the information provided, the proposed discharge of groundwater meets the conditions to be regulated under Order No. R4-2004-0058, *General National Pollutant Discharge Elimination System and Waste Discharge Requirements for Discharges of Nonprocess Wastewater to Surface Waters in Coastal Watersheds of Los Angeles and Ventura Counties*, adopted by this Board on April 1, 2004.

Enclosed are your Waste Discharge Requirements, which also serve as your NPDES permit, consisting of Order No. R4-2004-0058 and Monitoring and Reporting Program No. CI-9382. The discharge from the project will drain to San Francisquito Creek thence into the Santa Clara River (between Bouquet Canyon Road Bridge and West Pier Highway 99). Therefore, the discharge limitations in Attachment B.3.c. of Order No. R4-2004-0058 are applicable to your discharge. Prior to starting discharge, a representative sample of the effluent shall be obtained and analyzed to determine compliance with the discharge limitations.

The Monitoring and Reporting Program requires you to implement the monitoring program on the effective date of coverage under this permit. All monitoring reports should be sent to the Regional Board, ATTN: Information Technology Unit. When submitting monitoring or technical reports to the Regional Board per these requirements, please include a reference to "Compliance File No. CI-9382 and NPDES No. CAG994003", which will assure that the reports are directed to the appropriate file and staff. Also, please do not combine other reports with your monitoring reports. Submit each type of report as a separate document.

**California Environmental Protection Agency**



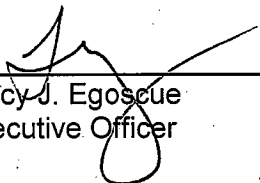
*Our mission is to preserve and enhance the quality of California's water resources for the benefit of present and future generations.*

To avoid paying future annual fees, please submit written request for termination of your enrollment under the general permit in a separate letter, when your project has been completed and the permit is no longer needed. Be aware that the annual fee covers the fiscal year billing period beginning July 1 and ending June 30, the following year. You will pay full annual fee if your request for termination is made after the beginning of new fiscal year beginning July 1.

We are sending a copy of Order No. R4-2004-0058 only to the applicant. For those on the mailing list, please refer to the Board Order sent to you previously. A copy of the Order will be furnished to anyone who requests it, or it can be obtained at our website address at [http://www.waterboards.ca.gov/rwqcblosangeles/html/permits/general\\_permits.html](http://www.waterboards.ca.gov/rwqcblosangeles/html/permits/general_permits.html).

If you have any questions, please contact Vilma Correa at (213) 576-6794.

Sincerely,

  
\_\_\_\_\_  
Tracy J. Egoscue  
Executive Officer

Enclosures: Fact Sheet  
Monitoring and Reporting Program No. CI-9382  
Order No. R4-2004-0058, General NPDES Permit No. CAG994003

cc: Environmental Protection Agency, Region 9, Permit Section (WTR-5)  
U.S. Army Corps of Engineers  
U.S. Fish and Wildlife Services, Division of Ecological Services  
NOAA, National Marine Fisheries Service  
Philip Isorena, SWRCB, NPDES Unit  
California Department of Fish and Game, Marine Resources, Region 5  
California Department of Health Services, Environmental Branch  
Los Angeles County, Department of Public Works, Environmental Program Division  
Los Angeles County, Department of Public Works, Flood Control Division  
Los Angeles County, Department of Health Services  
Jae Kim, Tetrattech  
Michael Alvord, Valencia Water Company

State of California  
CALIFORNIA REGIONAL WATER QUALITY CONTROL BOARD  
LOS ANGELES REGION  
320 West 4th Street, Suite 200, Los Angeles

FACT SHEET  
WASTE DISCHARGE REQUIREMENTS  
FOR  
VALENCIA WATER COMPANY  
(WELL W9)

(NPDES NO. CAG994003, SERIES NO. 001)  
CI-9382

**FACILITY LOCATION**

25001 Decoro Drive  
Valencia, CA 91355

**FACILITY MAILING ADDRESS**

24631 Avenue Rockefeller  
Valencia, CA 91355

**PROJECT DESCRIPTION**

Valencia Water Company (Valencia) proposes to discharge backwash water from their facility located at 25001 Decoro Drive, Valencia. The facility consists of a treatment system to soften groundwater pumped from Well W9. The groundwater from Well W9 will be softened by raising the pH with caustic soda to precipitate calcium carbonate sand pellets in the sand column. The pH of the water is then adjusted with carbon dioxide, and sent through a series of multimedia filters. Up to 1.5 million gallons of treated groundwater will be discharged during the 3-weeks start up period to test out the system. Thereafter, approximately 10,000 gallons of filter backwash and pellet drain water will be discharged to San Francisquito Creek or used for landscape irrigation. A desilting tank will be installed to allow sediment to settle out before the groundwater is discharged. The filter backwash discharge frequency and duration is approximately two hours during weekly operation. The treated water will be use for potable supply.

**VOLUME AND DESCRIPTION OF DISCHARGE**

Approximately 10,000 gallons per day (gpd) of water will be discharged to the San Francisquito Creek (Latitude 34° 27' 2", Longitude 118° 33' 32"). The discharge from San Francisquito Creek flows into the Santa Clara River, a water of the United States. The site location map and process flow diagram are shown in Figures 1 and 2.

**APPLICABLE EFFLUENT LIMITATIONS**

Based on the information provided in the NPDES Application Supplemental Requirements, the following constituents listed in the Table below have been determined to show reasonable potential to exist in the discharge. The discharge flows to Santa Clara River, therefore the discharge limitations in Attachment B.3.c. are applicable to the discharge.

February 27, 2008

This Table lists the specific constituents and effluent limitations applicable to the discharge.

Constituents	Units	Discharge Limitations	
		Daily Maximum	Monthly Average
Total Suspended Solids	mg/L	150	50
Turbidity	NTU	150	50
BOD <sub>5</sub> 20°C	mg/L	30	20
Settleable Solids	ml/L	0.3	0.1
Total Dissolved Solids	mg/L	1,000	---
Sulfate	mg/L	300	---
Chloride	mg/L	100	---
Boron	mg/L	1.5	---
Nitrogen <sup>1</sup>	mg/L	10	---
Sulfides	mg/L	1.0	---
Residual Chlorine	mg/L	0.1	---
Methylene Blue Active Substances (MBAS)	mg/L	0.5	---

#### FREQUENCY OF DISCHARGE

The discharge of backwash wastewater will be intermittent.

#### REUSE OF WATER

Water reuse alternatives and its applicability were evaluated. A small volume of the groundwater will be used for irrigation within the project area. The majority of the groundwater will be discharged into the San Francisquito Creek in compliance with the requirements of the attached order.

<sup>1</sup> Nitrate-nitrogen plus nitrite nitrogen.

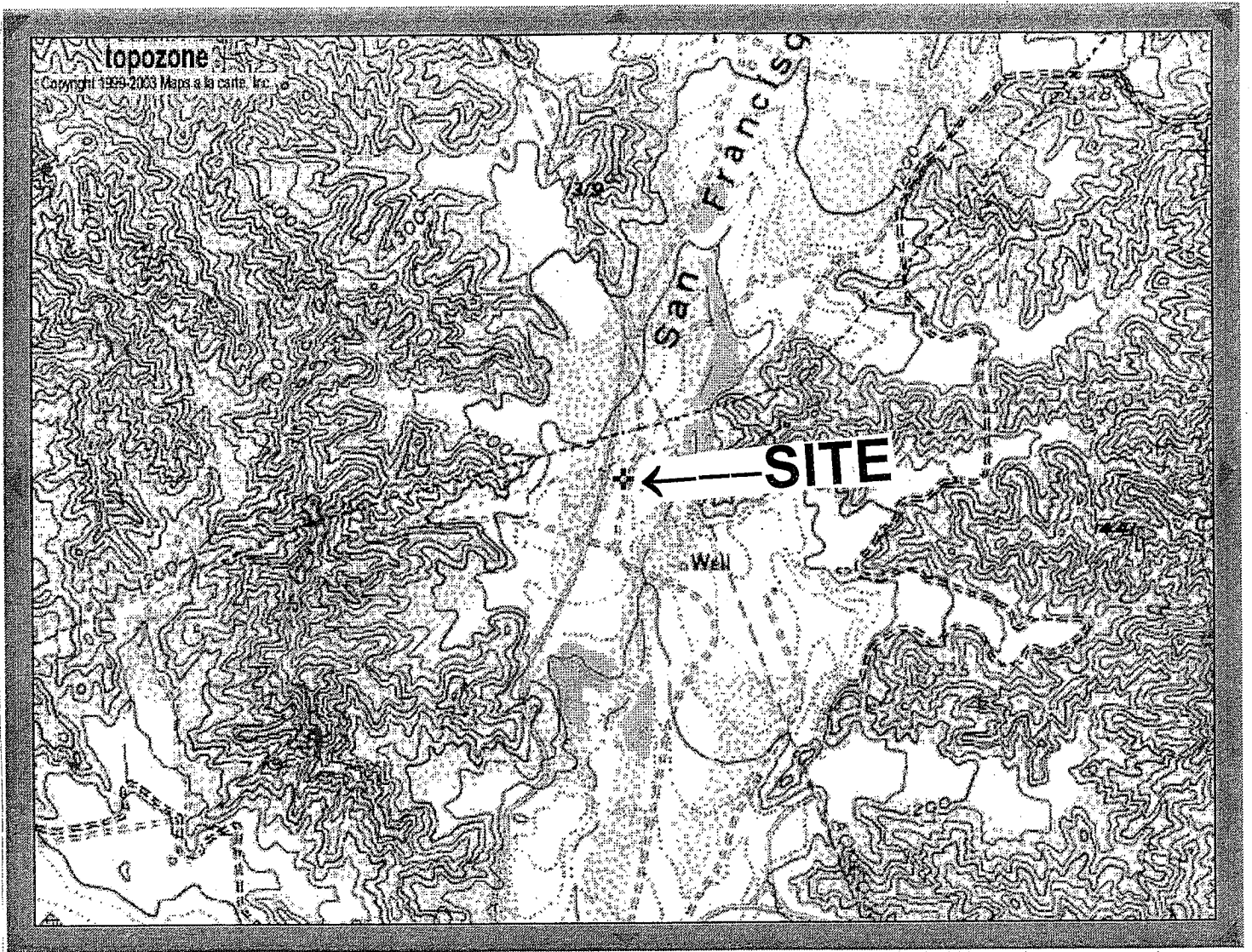
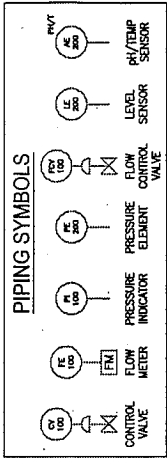


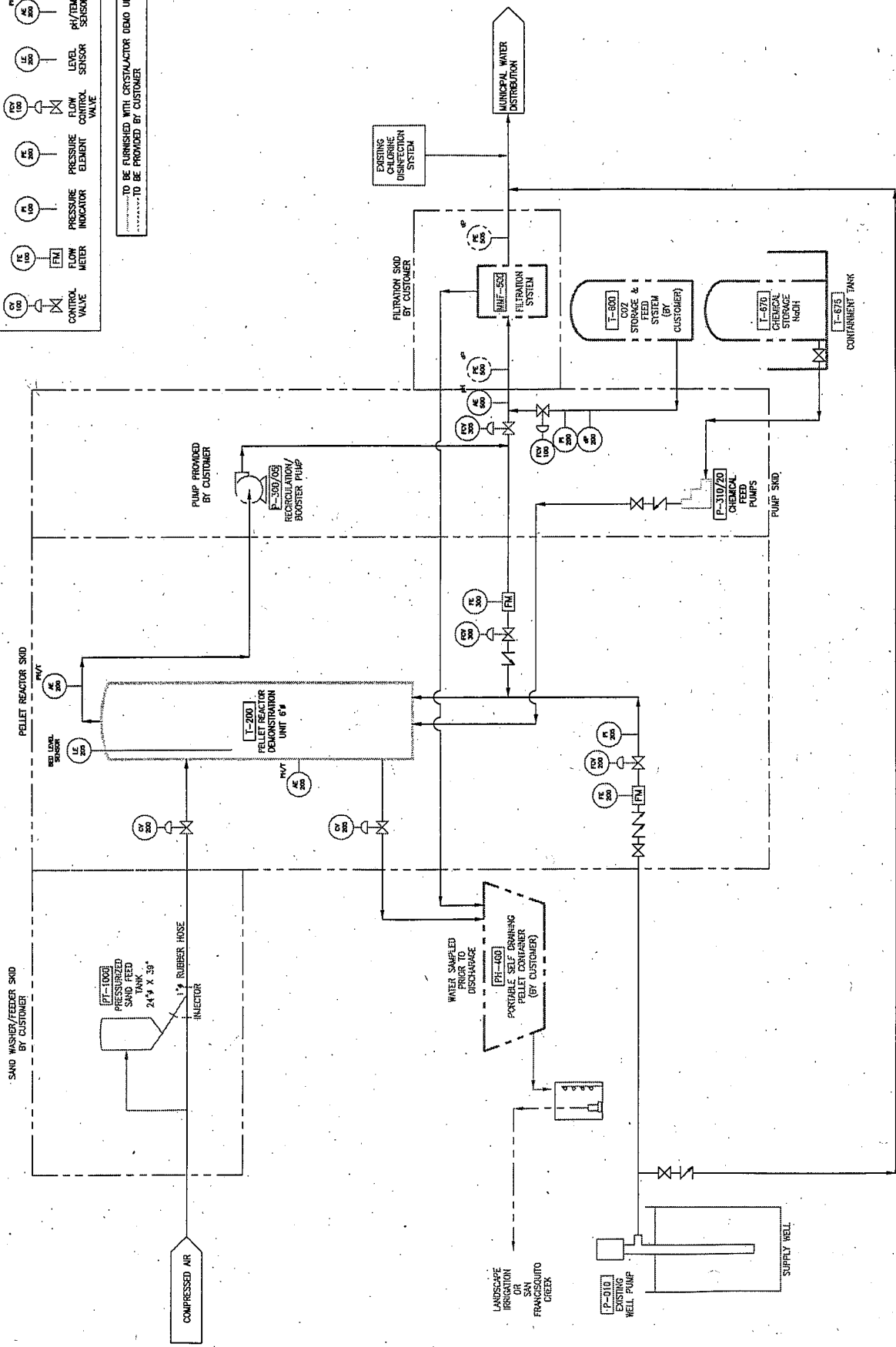
FIGURE 1

VALENCIA WATER COMPANY  
(WELL W9)

CI-9382



TO BE FURNISHED WITH CRISTRACTOR OBOO UNIT  
 TO BE PROVIDED BY CUSTOMER



**FIGURE 2**  
**VALENCIA WATER COMPANY**  
**(WELL W9)**  
**CI-9382**

State of California  
CALIFORNIA REGIONAL WATER QUALITY CONTROL BOARD  
LOS ANGELES REGION

MONITORING AND REPORTING PROGRAM NO. CI-9382  
for  
VALENCIA WATER COMPANY  
(WELL NO. W9)

(ORDER NO. R4-2004-0058, SERIES NO. 001)  
(NPDES NO. CAG994003)

I. REPORTING REQUIREMENTS

- A. The discharger shall implement this monitoring program on the effective date of coverage under this permit. The discharger shall submit monitoring reports to this Regional Board by the dates in the following schedule:

<u>Reporting Period</u>	<u>Report Due</u>
January – March	May 15
April – June	August 15
July – September	November 15
October – December	February 15

- B. The first monitoring report under this Program is due by May 15, 2008. If there is no discharge during any reporting period, the report shall so state.
- C. All monitoring reports shall include discharge limitations in the Order, tabulated analytical data, the chain of custody form, the analytical laboratory report (including, but not limited to: date and time of sampling, date of analyses, method of analysis, and detection limits), and discharge certification statement.
- D. Each monitoring report shall contain a separate section titled "Summary of Non-Compliance" which discusses the compliance record and corrective actions taken or planned that may be needed to bring the discharge into full compliance with waste discharge requirements. This section shall clearly list all non-compliance with waste discharge requirements, as well as all excursions of effluent limitations.
- E. Before commencing a new discharge, a representative sample of the effluent shall be collected and analyzed for toxicity and for all the constituents listed in the Fact Sheet and the test results must meet all applicable discharge limitations of Order R4-2004-00058.

February 27, 2008

## II. SAMPLE COLLECTION REQUIREMENTS

- A. Daily samples shall be collected each day.
- B. Weekly samples shall be collected on a representative day of each week.
- C. Monthly samples shall be collected on a representative day of each month.
- D. Quarterly samples shall be collected in February, May, August, and November.
- E. Semi-annual samples shall be collected in May and November.
- F. Annual samples shall be collected in November.

## III. EFFLUENT MONITORING REQUIREMENTS

- A. Sampling station(s) shall be established for each point of discharge and shall be located where representative samples of that effluent can be obtained. The discharger shall notify this Regional Board in writing of the location(s) of the sampling stations once established. Provisions shall be made to enable visual inspection before discharge. If oil sheen, debris, and/or other objectionable materials or odors are present, discharge shall not commenced before compliance with the requirements is demonstrated. All visual observations shall be included in the monitoring report.
- B. If monitoring results indicate an exceedance of a limit contained in Order No. R4-2004-0058, the discharge shall be terminated and shall only be resumed after remedial measures have been implemented and full compliance with the requirements has been ascertained.
- C. In addition, as applicable, following an effluent limit exceedance, the discharger shall implement the following accelerated monitoring program:
  - 1. Monthly monitoring shall be increased to weekly monitoring.
  - 2. Quarterly monitoring shall be increased to monthly monitoring, and
  - 3. Semi-annually monitoring shall be increased to quarterly.
  - 4. Annually monitoring shall be increased to semi-annually.

If three consecutive accelerated monitoring events demonstrate full compliance with effluent limits, then, the discharger may return to regular monitoring frequency, with the approval of the Executive Officer of the Regional Board.



D. The following shall constitute the discharge monitoring program:

Constituent	Units	Type of Sample	Minimum Frequency of Analysis
Total Waste Flow	gal/day	recorder	continuously <sup>1</sup>
pH	pH units	grab	monthly
Temperature	°F	grab	monthly
Total Suspended Solids	mg/L	grab	monthly
Turbidity	NTU	grab	monthly
BOD <sub>5</sub> 20°C	mg/L	grab	monthly
Settleable Solids	ml/L	grab	monthly
Total Dissolved Solids	mg/L	grab	monthly
Sulfate	mg/L	grab	monthly
Chloride	mg/L	grab	monthly
Boron	mg/L	grab	monthly
Nitrogen <sup>2</sup>	mg/L	grab	monthly
Residual Chlorine	mg/L	grab	quarterly
Methylene Blue Active Substances (MBAS)	mg/L	grab	quarterly
Acute Toxicity	µg/L	grab	annually

#### IV. EFFLUENT TOXICITY TESTING

- A. The discharger shall conduct acute toxicity tests on 100% effluent grab samples by methods specified in 40 CFR Part 136 which cites of the USEPA's *Methods for Measuring the Acute Toxicity of Effluents and Receiving Waters to Freshwater and Marine Organisms*. October 2002, (EPA/821-R-02-012) or a more recent edition. Submission of bioassay results should include the information noted on pages 109-113 of the EPA/821-R-02-012 document.
- B. The fathead minnow, *Pimephales promelas*, shall be used as the test species for fresh water discharges and the topsmelt, *Atherinops affinis*, shall be used as the test species for brackish discharges. The method for topsmelt is found in USEPA's *Short Term Methods for Estimating the Chronic Toxicity of Effluents and*

<sup>1</sup> Record the monthly total flow and report the calculated daily average flow and monthly flow in the quarterly and annual reports, as appropriate.

<sup>2</sup> Nitrate-nitrogen plus nitrite-nitrogen (NO<sub>3</sub>-N + NO<sub>2</sub>-N).

*Receiving Waters to Marine and Estuarine Organisms, First Edition, August 1995, (EPA/600/R-95-136).*

- C. If the results of the toxicity test yields a survival of less than 90%, then the frequency of analyses shall increase to monthly until at least three test results have been obtained and full compliance with effluent limitations has been demonstrated, after which the frequency of analyses shall revert to annually. Results of toxicity tests shall be included in the first monitoring report following sampling.

#### V. GENERAL PROVISIONS FOR REPORTING

- A. The discharger shall inform this Regional Board 24 hours before the start of the discharge.
- B. All chemical, bacteriological, and toxicity analyses shall be conducted at a laboratory certified for such analyses by the California Department of Health Services Environmental laboratory Accreditation Program (ELAP) or approved by the Executive Officer. A copy of the laboratory certification shall be provided with the first monitoring report and each time a new and/or renewal certification is obtained from ELAP.
- C. Samples must be analyzed within allowable holding times as specified in 40 CFR Part 136.3. Proper chain of custody procedures must be followed and a copy shall be submitted with the report.
- D. As required in Part H.5 of order No. R4-2003-0058, the monitoring report shall specify the USEPA analytical method used, the method detection limit, and the minimum Level for each pollutant.

#### VI. COMPLIANCE DETERMINATION (AS APPLICABLE)

- A. Compliance with single constituent effluent limitation – If the concentration of the pollutant in the monitoring sample is greater than the effluent limitation and greater than or equal to the reported Minimum Level (see Monitoring and Reporting Requirement Section H.5 of Order No. R4-2004-0058), then the Discharger is out of compliance.
- B. Compliance with monthly average limitations - In determining compliance with monthly average limitations, the following provisions shall apply to all constituents:
  - a. If the analytical result of a single sample, monitored monthly, quarterly, semiannually, or annually, does not exceed the monthly average limit for

that constituent, the Discharger has demonstrated compliance with the monthly average limit for that month.

- b. If the analytical result of a single sample, monitored monthly, quarterly, semiannually, or annually, exceeds the monthly average limit for any constituent, the Discharger shall collect four additional samples at approximately equal intervals during the month. All five analytical results shall be reported in the monitoring report for that month, or 45 days after results for the additional samples were received, whichever is later.

When all sample results are greater than or equal to the reported Minimum Level (see Monitoring and Reporting Requirement Section H.5 of Order No. R4-2004-0058), the numerical average of the analytical results of these five samples will be used for compliance determination.

When one or more sample results are reported as "Not-Detected (ND)" or "Detected, but Not Quantified (DNQ)" (see Monitoring and Reporting Requirement Section H.5 of Order No. R4-2004-0058), the median value of these four samples shall be used for compliance determination. If one or both of the middle values is ND or DNQ, the median shall be the lower of the two middle values.

- c. In the event of noncompliance with a monthly average effluent limitation, the sampling frequency for that constituent shall be increased to weekly and shall continue at this level until compliance with the monthly average effluent limitation has been demonstrated.
  - d. If only one sample was obtained for the month or more than a monthly period and the result exceed the monthly average, then the Discharger is in violation of the monthly average limit.
- C. Compliance with effluent limitations expressed as a sum of several constituents – If the sum of the individual pollutant concentrations is greater than the effluent limitation, then the Discharger is out of compliance. In calculating the sum of the concentrations of a group of pollutants, consider constituents reported as ND or DNQ to have concentrations equal to zero, provided that the applicable ML is used.
- D. Compliance with effluent limitations expressed as a median – in determining compliance with a median limitation, the analytical results in a set of data will be arranged in order of magnitude (either increasing or decreasing order); and

- a. If the number of measurements (n) is odd, then the median will be calculated as  $= X_{(n+1)/2}$ , or
  - b. If the number of measurements (n) is even, then the median will be calculated as  $= [X_{n/2} + X_{(n/2)+1}]/2$ , i.e. the midpoint between the n/2 and n/2+1 data points.
- E. In calculating mass emission rates from the monthly average concentrations, use one half of the method detection limit for "Not Detected" (ND) and the estimated concentration for "Detected, but Not Quantified" (DNQ) for the calculation of the monthly average concentration. To be consistent with section VI.C., if all pollutants belonging to the same group are reported as ND or DNQ, the sum of the individual pollutant concentrations should be considered as zero for the calculation of the monthly average concentration.

## VII. NOTIFICATION

- A. The discharger shall notify the Executive Officer in writing prior to discharge of any chemical that may be toxic to aquatic life. Such notification shall include:
1. Name and general composition of the chemical,
  2. Frequency of use,
  3. Quantities to be used,
  4. Proposed discharge concentrations, and
  5. EPA registration number, if applicable.

No discharge of such chemical shall be made prior to obtaining the Executive Officer's approval.

- B. The discharger shall notify the Regional Board via telephone and/or fax within 24 hours of noticing an exceedance above the effluent limits in Order No. R4-2004-0058. The discharger shall provide to the Regional Board within 14 days of observing the exceedance a detailed statement of the actions undertaken or proposed that will bring the discharge into full compliance with the requirements and submit a timetable for correction.

Mr. Robert J. DiPrimio  
Valencia Water Company  
(Well W9)

CI-9382

VIII. MONITORING FREQUENCIES

Monitoring frequencies may be adjusted by the Executive Officer to a less frequent basis if the Discharger requests same and the request is backed by statistical trends of monitoring data submitted.

Ordered by:

  
\_\_\_\_\_  
Tracy J. Egoscue  
Executive Officer

Date:

February 27, 2008

/vbc