



# California Regional Water Quality Control Board

## Los Angeles Region



Linda S. Adams  
Cal/EPA Secretary

320 W. 4th Street, Suite 200, Los Angeles, California 90013  
Phone (213) 576-6600 FAX (213) 576-6640 - Internet Address: <http://www.waterboards.ca.gov/losangeles>

Arnold Schwarzenegger  
Governor

May 23, 2008

Mr. Simon Tregurtha  
Thrifty Oil Company  
13116 Imperial Highway  
Santa Fe Springs, CA 90670

**GENERAL WASTE DISCHARGE REQUIREMENTS FOR GROUNDWATER CLEANUP AT PETROLEUM HYDROCARBON FUEL, VOLATILE ORGANIC COMPOUND AND/OR HEXAVALENT CHROMIUM IMPACTED SITES – THRIFTY STATION 216, 1356 N. ERRINGER ROAD, SIMI VALLEY (ORDER NO. R4-2007-0019, SERIES NO. 053; CI NO. 9400)**

Dear Mr. Tregurtha:

We have completed our review of your application for coverage under the General Waste Discharge Requirements to inject oxygen releasing compound (ORC) at the site referenced above in Simi Valley for groundwater cleanup and remediation.

In July 1988, five underground storage tanks (USTs) were removed from the site. The environmental assessment of the site started in April 1988 with the installation of five soil borings to obtain soil and grab groundwater samples by Hydrotech Consultants, Inc. Since then, various subsurface investigations have been conducted at the site, which consisted of drilling and sampling numerous soil borings, and installing eleven groundwater monitoring wells (refer to Figures 2 and 3 for groundwater flow direction and groundwater plume delineation). Groundwater monitoring data collected in October 2007 indicated that TPHg, BTEX, TBA, and MTBE were detected at concentration of 27,600, 8,456, 354, and 88 micrograms per liter ( $\mu\text{g/L}$ ) respectively.

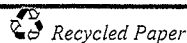
During the USTs upgrade operation in April and May 1998, a total of 371 tons of hydrocarbon-impacted soil were removed.

From October 2002 through September 2007, over-purging events at groundwater monitoring well TDD-6 had removed about 6,000 gallons of contaminated groundwater.

In addition, a total of nineteen dual-phase extraction events were conducted from November 2005 through October 2007, having removed a combined 164 pounds of petroleum hydrocarbons.

To further remediate the residual groundwater contaminations around groundwater monitoring well TDD-6, a "Remedial Action Plan" (RAP) dated December 19, 2007, by Equipoise Corporation proposed to inject oxygen releasing compound (ORC) into the groundwater to

*California Environmental Protection Agency*



enhance biodegradation and natural attenuation of petroleum hydrocarbons (please refer Figure 6).

A letter dated January 16, 2008 from County of Ventura, Environmental Health Division approved the Remedial Action Plan.

Regional Board staff has determined that the proposed discharge meets the conditions specified in Order No. R4-2007-0019, "Revised General Waste Discharge Requirements for Groundwater Remediation At Petroleum Hydrocarbon Fuel, Volatile Organic Compound and/or Hexavalent Chromium Impacted Sites (General WDRs)," adopted by the Los Angeles Regional Water quality Control Board on March 1, 2007.

Enclosed are your Waste Discharge Requirements, consisting of General WDRs Board Order No. 2007-0019 and Monitoring and Reporting Program No. CI-9400 and Standard Provisions. This Waste Discharge Requirements shall not be rescinded without the regulatory oversight agency's prior approval.

The Monitoring and Reporting Program requires you to implement the monitoring program on the effective date of this enrollment under Regional Board Order No. R4-2007-0019. All monitoring reports shall be sent to the Regional Board, ATTN: Information Technology Unit.

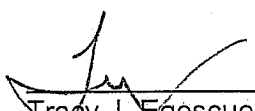
When submitting monitoring or technical reports to the Regional Board per these requirements, please include a reference to Compliance File No. CI-9400, which will assure that the reports are directed to the appropriate file and staff. Do not combine other reports with your monitoring reports. Submit each type of report as a separate document.

We are sending a copy of Order No. R4-2007-0019 only to the applicant. A copy of the Order will be furnished to anyone who requests it, or on line at:

[http://www.waterboards.ca.gov/losangeles/board\\_decisions/adopted\\_orders/general\\_orders/r4-2007-0019/r4-2007-0019.pdf](http://www.waterboards.ca.gov/losangeles/board_decisions/adopted_orders/general_orders/r4-2007-0019/r4-2007-0019.pdf)

If you have any questions, please contact Mr. Rod Nelson at (213) 576-6119.

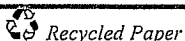
Sincerely,

  
Tracy J. Egoscue  
Executive Officer

- Enclosures:
1. Board Order No. R4-2007-0019
  2. Standard Provisions for Reporting and Monitoring
  3. Monitoring and Reporting Program No. CI-9400

cc: Mr. David Salter, Ventura County Division of Environmental Health  
Mr. Elliot Haro, Equipoise Corp.

**California Environmental Protection Agency**



STATE OF CALIFORNIA  
CALIFORNIA REGIONAL WATER QUALITY CONTROL BOARD  
LOS ANGELES REGION  
MONITORING AND REPORTING PROGRAM NO. CI-9400  
FOR  
THRIFTY STATION 216  
1356 N. ERRINGER ROAD, SIMI VALLEY  
(ORC INJECTION FOR GROUNDWATER CLEANUP)  
(ORDER NO. R4-2007-0019, SERIES NO. 053)

I. REPORTING REQUIREMENTS

- A. Thrifty Oil Company (hereinafter Discharger) shall implement this monitoring program on the effective date of Regional Board Order No. R4-2007-0019. The first monitoring report under this program, for April-June 2008, shall be received at the Regional Board by July 15, 2008. Subsequent monitoring reports shall be received at the Regional Board according to the following schedule:

<u>Monitoring Period</u>	<u>Report Due</u>
January – March	April 15
April – June	July 15
July – September	October 15
October – December	January 15

If there is no discharge or injection during any reporting period, the report shall so state. Monitoring reports must be addressed to the Regional Board, Attention: Information Technology Unit.

- B. By March 1<sup>st</sup> of each year, the Discharger shall submit an annual summary report to the Regional Board. The report shall contain both tabular and graphical summaries of the monitoring data obtained during the previous calendar year. In addition, the Discharger shall explain the compliance record and the corrective actions taken, or planned, which may be needed to bring the discharge into full compliance with the waste discharge requirements (WDRs).
- C. Laboratory analyses – all chemical, bacteriological, and toxicity analyses shall be conducted at a laboratory certified for such analyses by the California Department of Health Services Environmental Laboratory Accreditation Program (ELAP). A copy of the laboratory certification shall be provided each time a new and/or renewal certification is obtained from ELAP.

May 22, 2008

- D. The method limits (MLs) employed for effluent analyses shall be lower than the permit limits established for a given parameter, unless the Discharger can demonstrate that a particular ML is not attainable and obtains approval for a higher ML from the Regional Board Executive Officer (Executive Officer). The Discharger shall submit a list of the analytical methods employed for each test and the associated laboratory quality assurance/quality control (QA/QC) procedures upon request by the Regional Board.
- E. Groundwater samples must be analyzed within allowable holding time limits as specified in 40 CFR Part 136. All QA/QC samples must be run on the same dates when samples were actually analyzed. The Discharger shall make available for inspection and/or submit the QA/QC documentation upon request by Regional Board staff.
- F. Each monitoring report must affirm in writing that "All analyses were conducted at a laboratory certified for such analyses by the California Department of Health Services, and in accordance with current United States Environmental Protection Agency (USEPA) guideline procedures or as specified in this Monitoring Program." Proper chain of custody procedures must be followed and a copy of the completed chain of custody form shall be submitted with the report.
- G. Each monitoring report shall contain a separate section titled "Summary of Non-Compliance" which discusses the compliance record and the corrective actions taken or planned that may be needed to bring the discharge into full compliance with WDRs. This section shall be located at the front of the report and shall clearly list all non-compliance with WDRs, as well as all excursions of effluent limitations.
- H. The Discharger shall maintain all sampling and analytical results: date, exact place, and time of sampling; dates analyses were performed; analyst's name; analytical techniques used; and results of all analyses. Such records shall be retained for a minimum of three years. This period of retention shall be extended during the course of any unresolved litigation regarding this discharge, or when requested by the Regional Board.
- I. If the Discharger performs analyses on any groundwater samples more frequently than required by this Order using approved analytical methods, the results of those analyses shall be included in the report.
- J. In reporting the monitoring data, the Discharger shall arrange the data in tabular form so that the date, the constituents, and the concentrations are readily discernible. The data shall be summarized to demonstrate compliance with the requirements and, where applicable, shall include results of receiving water observations.

- K. The Discharger should not implement any changes to the Monitoring and Reporting Program prior to receiving Executive Officer's written approval.

II. ORC INJECTION MONITORING REQUIREMENTS

The quarterly reports shall contain the following information regarding injection activities:

1. Location map showing placement locations, used for the oxygen releasing compound (ORC) (please refer to attached Figure 2 for groundwater contour, Figure 3 for groundwater contaminant plume, and Figure 6 for the proposed injection locations).
2. Written and tabular summary defining the quantity of ORC injected to the groundwater and a summary describing the days on which the injection system was in operation.

CONSTITUENT	UNITS	TYPE OF SAMPLE	MINIMUM FREQUENCY OF ANALYSIS
Total ORC delivered per injection location	grams	--	• Quarterly

III. GROUNDWATER MONITORING PROGRAM

The Discharger shall conduct groundwater monitoring at the site. Groundwater samples shall be collected from up-gradient area groundwater monitoring wells BW-2 and BW-3; source area groundwater monitoring well TDD-6; and down-gradient area groundwater monitoring wells BW-1 and MW-7 on a quarterly basis to monitor the effectiveness of the in-situ groundwater remediation. ORC injection points shall not be used as monitoring points. Groundwater shall be monitored for the duration of the remediation in accordance with the following discharge monitoring program:

CONSTITUENT	UNITS	TYPE OF SAMPLE	MINIMUM FREQUENCY OF ANALYSIS
Total petroleum hydrocarbons as gasoline (TPHg) and as diesel (TPHd)	µg/L	Grab	• Quarterly <sup>1</sup>
Benzene, Toluene, Ethylbenzene, Xylenes (BTEX)	µg/L	Grab	• Quarterly <sup>1</sup>

Methyl tertiary butyl ether (MTBE), Tertiary butyl alcohol (TBA), Tertiary amyl methyl ether (TAME), Di-isopropyl ether (DIPE), ether (ETBE)	µg/L	Grab	• Quarterly <sup>1</sup>
Ethanol Formaldehyde Acetone	µg/L	Grab	• Quarterly <sup>1</sup>
Total dissolved solids, Arsenic, Boron, Chloride, Bromide, Sulfate, Lead, Nickel, Cadmium, Manganese	mg/L	Grab	• Quarterly <sup>1</sup>
Oxidation-reduction potential	millivolts		• Quarterly <sup>1</sup>
Dissolved Oxygen	µg/L	Grab	• Quarterly <sup>1</sup>
Dissolved ferrous iron	µg/L	Grab	• Quarterly <sup>1</sup>
Total Chromium and chromium six <sup>2</sup>	µg/L	Grab	• Quarterly <sup>1</sup>
PH	pH units	Grab	• Quarterly <sup>1</sup>
Temperature	<sup>0</sup> F/ <sup>0</sup> C	Grab	• Quarterly <sup>1</sup>
Groundwater Elevation	Feet, mean sea level and below ground surface	In situ	• Quarterly <sup>1</sup>

<sup>1</sup> One week before injection and Quarterly thereafter

<sup>2</sup> The Discharger is required to monitor for total chromium and chromium six in the baseline, second and fourth quarterly sampling. If detected at any of these sampling events, the total chromium and chromium six must be monitored quarterly thereafter.

All groundwater monitoring reports must include, at a minimum, the following:

- a. Well identification, date and time of sampling;
- b. Sampler identification, and laboratory identification;
- c. Quarterly observation of groundwater levels, recorded to 0.01 feet mean sea level and groundwater flow direction.

#### IV. MONITORING FREQUENCIES

Monitoring frequencies may be adjusted to a less frequent basis or parameters dropped by the Executive Officer if the Discharger makes a request and the Executive Officer determines that the request is adequately supported by statistical trends of monitoring data submitted.

V. CERTIFICATION STATEMENT

Each report shall contain the following declaration:

"I certify under penalty of law that this document, including all attachments and supplemental information, was prepared under my direction or supervision in accordance with a system designed to assure that qualified personnel properly gathered and evaluated the information submitted. Based on my inquiry of the person or persons who manage the system, or those persons directly responsible for gathering the information, the information submitted is, to the best of my knowledge and belief, true, accurate, and complete. I am aware that there are significant penalties for submitting false information, including the possibility of a fine and imprisonment.

Executed on the \_\_\_\_\_ day of \_\_\_\_\_ at \_\_\_\_\_.

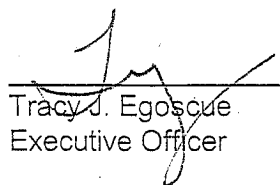
\_\_\_\_\_  
(Signature)

\_\_\_\_\_  
(Title)"

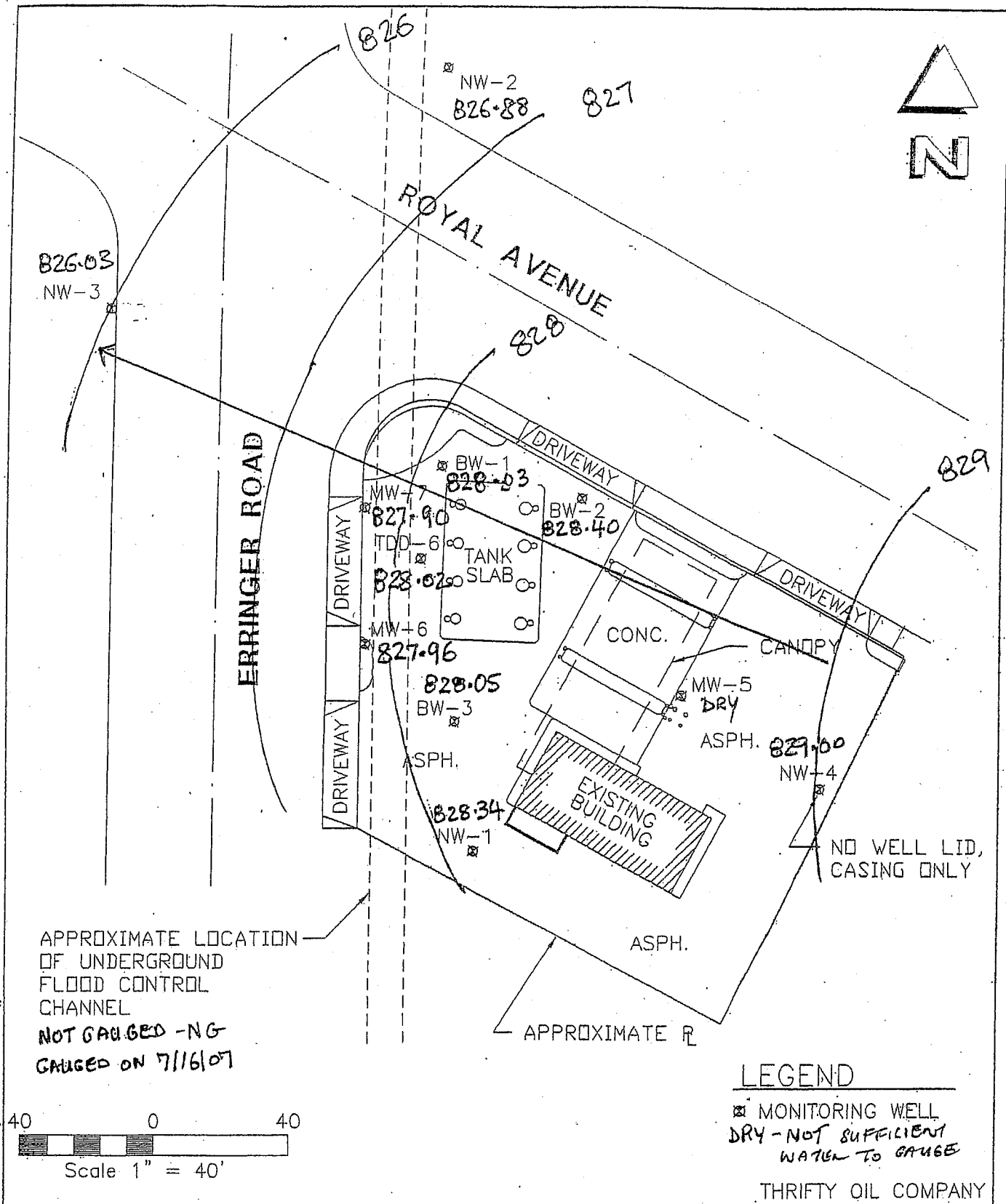
VI. PUBLIC DOCUMENTS

These records and reports are public documents and shall be made available for inspection during normal business hours at the office of the California Regional Water Quality Control Board, Los Angeles Region.

Ordered by:

  
\_\_\_\_\_  
Tracy J. Egoscue  
Executive Officer

Date: May 22, 2008



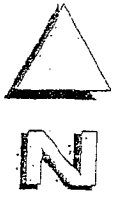
DATE: \_\_\_\_\_  
 \_\_\_\_\_  
 \_\_\_\_\_

Groundwater Contour Map

PROJECT:  
 MONITORING WELL SURVEY  
 THRIFTY OIL COMPANY  
 STATION No. 216  
 1356 ERRINGER ROAD  
 SIMI VALLEY, CALIFORNIA 90051

2



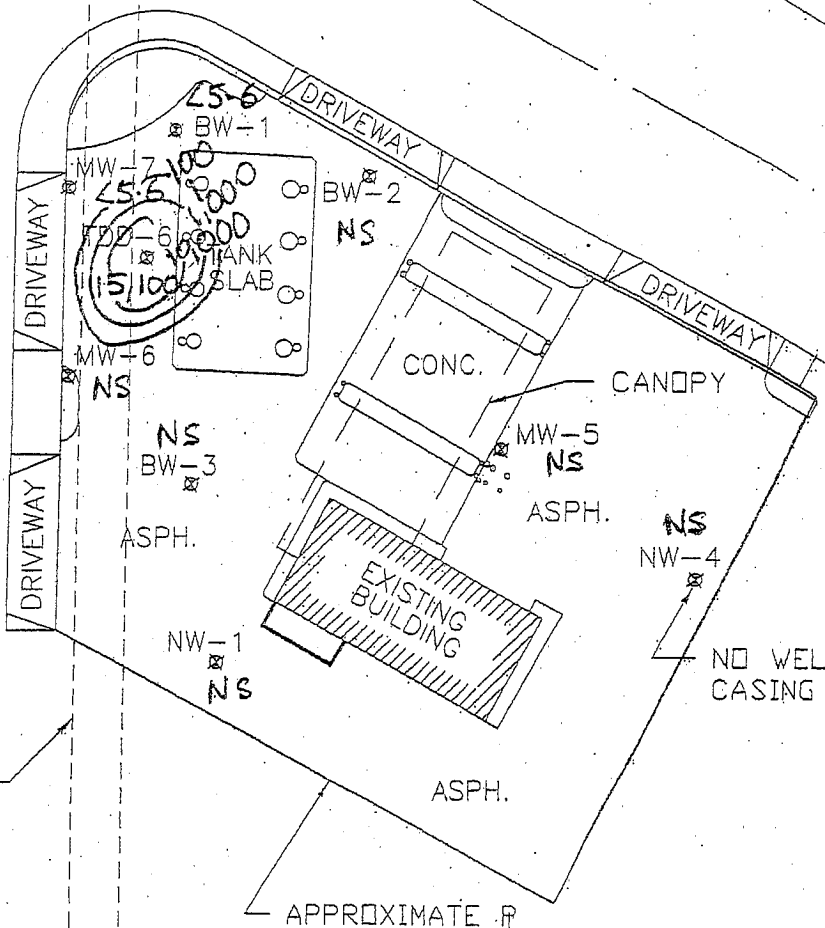


ROYAL AVENUE

ERRINGER ROAD

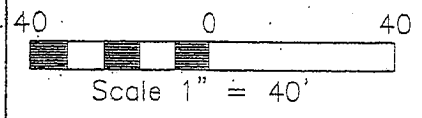
NW-3  
NS

NW-2  
NS



APPROXIMATE LOCATION OF UNDERGROUND FLOOD CONTROL CHANNEL

SAMPLED ON 7/16/07  
NOT SAMPLED -NS



LEGEND

☒ MONITORING WELL

THRIFTY OIL COMPANY

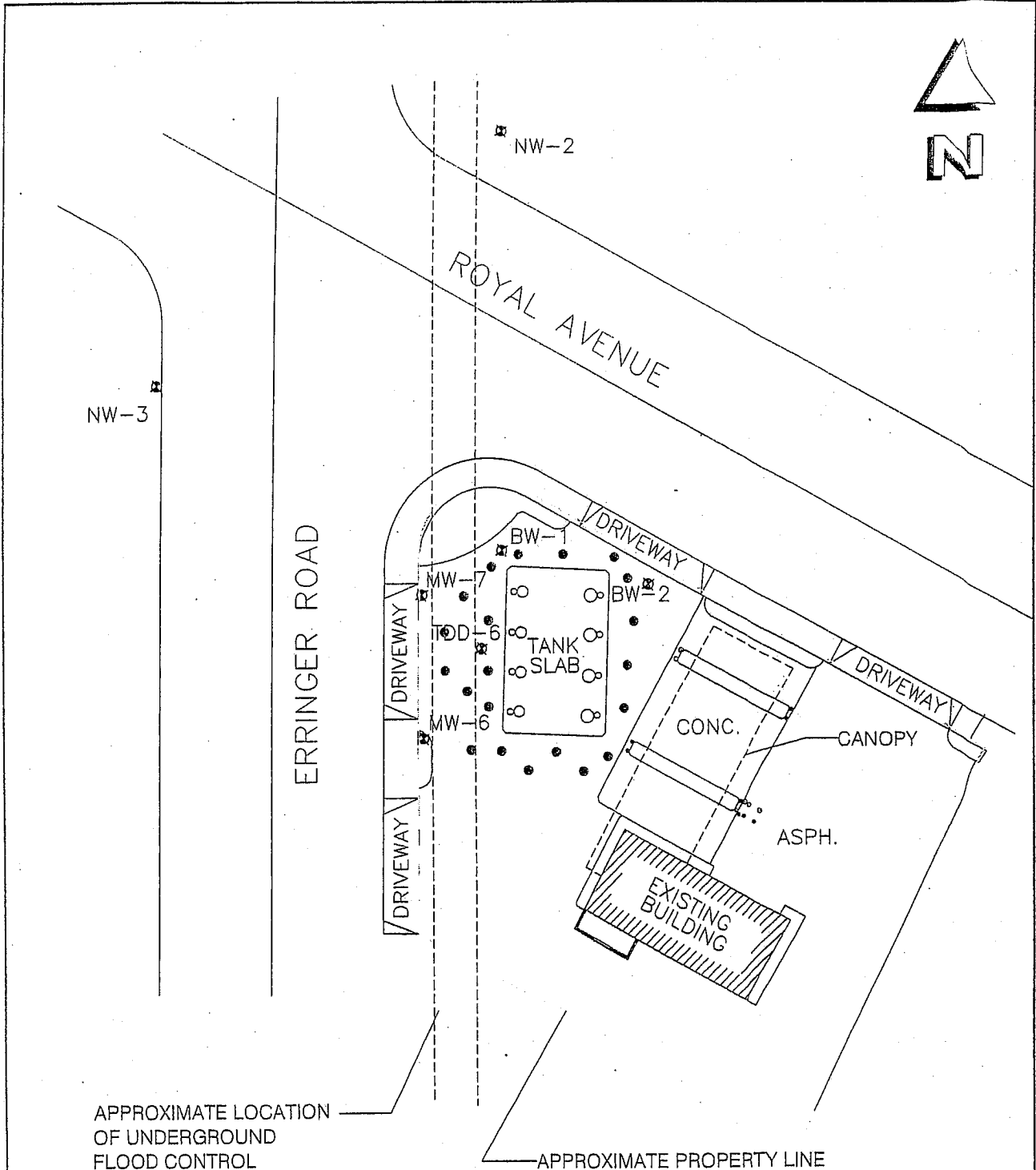
DATE: \_\_\_\_\_

\_\_\_\_\_

\_\_\_\_\_

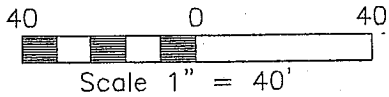
TPH-g Isoconcentration Map

PROJECT:  
 MONITORING WELL SURVEY  
 THRIFTY OIL COMPANY  
 STATION No. 216  
 1356 ERRINGER ROAD  
 SIMI VALLEY, CALIFORNIA 90051



APPROXIMATE LOCATION  
OF UNDERGROUND  
FLOOD CONTROL  
CHANNEL

APPROXIMATE PROPERTY LINE



**LEGEND**

- ☒ MONITORING WELL
- PROPOSED ORC INJECTION LOCATION

<p><b>EQUIPOSE</b> CORPORATION</p> <p>1401 N. El Camino Real, Suite 107 San Clemente, California 92672 Phone: 949 366 0266 Fax: 949 366 0261</p> <p>FILE NAME: SITE PLAN.DWG</p>	<p>SITE PLAN WITH PROPOSED ORC LOCATIONS</p>		<p>FIGURE: 6</p>
	<p>THRIFTY OIL CO. #216</p> <p>1356 Erringer Road</p> <p>Simi Valley, California</p>		<p>SHEET: 6</p> <p>of 6</p>
	<p>1356 Erringer Road</p> <p>Simi Valley, California</p>		<p>REVISION NO: 0</p>
	<p>1356 Erringer Road</p> <p>Simi Valley, California</p>		<p>DATE: 12/07</p>