



California Regional Water Quality Control Board

Los Angeles Region



Recipient of the 2001 *Environmental Leadership Award* from Keep California Beautiful

Linda S. Adams
Agency Secretary

320 W. 4th Street, Suite 200, Los Angeles, California 90013
Phone (213) 576-6600 FAX (213) 576-6640 - Internet Address: <http://www.waterboards.ca.gov/losangeles>

Arnold Schwarzenegger
Governor

February 12, 2009

Mr. David Chernik
Playa Vista Development
6500 Seabluff Drive
Playa Vista, CA 90094

COVERAGE UNDER GENERAL WASTE DISCHARGE PERMIT ORDER NO. 93-010, SERIES NO. 033 AND MONITORING AND REPORTING PROGRAM NO. CI 9444 - GROUNDWATER WELL DISINFECTION, CLEANUP AND REHABILITATION PLAN AT PLAYA VISTA DEVELOPMENT PROJECT - 6775 CENTINELA AVENUE, LOS ANGELES, CALIFORNIA (CLEANUP AND ABATEMENT ORDER NO. 98-125, FILE NO. 98-192, SLIC NO. 0773, SITE ID NO. 2043W00)

Dear Mr. Chernik:

The Los Angeles Regional Water Quality Control Board (Regional Board) staff has reviewed your application dated April 24, 2008 for a Waste Discharge Requirement (WDR) permit to implement a well rehabilitation program at the Playa Vista Development Project (Playa Vista site).

On February 12, 2009 the Regional Board approved a cleanup plan that included the use of chemical and mechanical means for removal of biomass from groundwater wells associated with the Campus Area Remediation system as proposed by Camp Dresser & McKee Inc (CDM) on behalf of Playa Capital Company, LLC (Playa Capital).

Based on the proposed well rehabilitation method, the Regional Board staff has determined that the proposed well rehabilitation work will not have adverse water quality impacts, and any impacts that may result, shall be localized, of short-term duration and shall not impact any existing or prospective uses of groundwater. The Regional Board requires that the applicant shall monitor and report groundwater quality to verify that the proposed discharge will not produce adverse impacts to water quality and verify that it meets the conditions specified in Order No. 93-010 "General Waste Discharge Requirements for specified discharges in Santa Clara River and Los Angeles River Basins" (General WDR Permit adopted by the Regional Board on January 6, 1993).

The area designated as the Playa Vista site is located at Latitude: N33° 58' 35.6", Longitude: W118° 24' 35.3 in Los Angeles, California. The quantities of hypochlorite solution injected shall be documented per Monitoring and Reporting Program No. CI-9444.

Enclosed are your Waste Discharge Requirements consisting of Regional Board Order No. 93-010, Series 033, Monitoring and Reporting Program No. CI-9444 and Standard Provisions. This WDR shall not be terminated until Regional Board staff determines the WDR is no longer needed for the proposed injection at the site.

California Environmental Protection Agency



Recycled Paper

Our mission is to preserve and enhance the quality of California's water resources for the benefit of present and future generations.

The Monitoring and Reporting Program requires you to implement the monitoring program on the effective date of this enrollment under Regional Board Order No. 93-010. All monitoring reports shall be sent to the Regional Board, ATTN: Information Technology Unit.

When you submit monitoring or technical reports to the Regional Board per these requirements, please include a reference to Compliance File No. CI-9444, which will assure that the reports are directed to the appropriate staff and file. Do not combine other reports with your monitoring reports. Submit each type of report as a separate document.

We are sending one copy of Order No. 93-010 to you. Additional copies of the Order will be furnished to anyone who requests it.

If you have any questions, please contact Dr. Noori Alavi at (213) 576-6659 or Mr. Adnan Siddiqui at (213) 576-6812.

Sincerely,


Tracy J. Egoscue
Executive Officer

Enclosures:

1. Regional Board Order 93-010
2. Standard Provisions applicable to Waste Discharge Requirements
3. Monitoring and Reporting Program No. CI-9444
4. Site map

Cc: Ken Gill, Los Angeles Department of Building and Safety
David Chamberlain, CDM



State of California
CALIFORNIA REGIONAL WATER QUALITY CONTROL BOARD
LOS ANGELES REGION

ORDER NO. 93-010

GENERAL WASTE DISCHARGE REQUIREMENTS
FOR SPECIFIED DISCHARGES TO GROUNDWATER
IN
SANTA CLARA RIVER AND LOS ANGELES RIVER BASINS
File No. 92-60

The California Regional Water Quality Control Board, Los Angeles Region (hereinafter Regional Board), finds:

1. The California Water Code, Section 13260 of Chapter 4, Article 4, requires that any person discharging wastes, or proposing to discharge wastes, which could affect the quality of the waters of the State, shall file a Report of Waste Discharge with the Regional Board. The Regional Board will then prescribe requirements as to the nature of the proposed or existing discharge.
2. A number of activities carried on within the Region result in the discharge of water that, because of its characteristics, results in little or no pollution when discharged to groundwater. Examples of these activities include:
 - a) hydrostatic testing of tanks, pipes, and storage vessels;
 - b) construction dewatering;
 - c) dust control application;
 - d) water irrigation storage systems;
 - e) subterranean seepage dewatering;
 - f) well development and test pumping;
 - g) aquifer testing; and
 - h) monitoring well construction.

The following discharges are specifically excluded from this list: water produced from seawater extraction or wastewater treatment, reclaimed water, and water to be injected directly into an aquifer.

3. The water discharged from these activities results in discharges of relatively "clean" wastewater, containing few pollutants. For the purposes of this Order, "wastewater" is defined as high quality wastewater, produced as a result of the above-listed specified activities, and other similar activities. It is of a quality acceptable for use under State Department of Health Services standards and the Regional Board's Water Quality Control Plan.
4. These discharges occur in a manner where they will likely, through recharge or percolation, enter the groundwater and may therefore, be considered a waste discharge which could affect the quality of the waters of the State, and for which a Report of Waste Discharge must be filed under Water Code Section 13260.

January 6, 1993

5. Each month, this Regional Board receives a large number of requests to discharge water from the activities listed in Finding 2 above, and for other similar activities. For each such request, staff must determine the absence or presence of significant pollutants in the discharge, the regulatory limits for the pollutants, and the potential impact of the discharge on the waters of the State, and then prepare individual Waste Discharge Requirements.
6. It is anticipated that the large number of such requests will continue to be filed, and far exceed the capacity of staff to review applications and prepare individual Waste Discharge Requirements to bring to the Board for consideration, in a timely manner. These circumstances create the need for an expedited system for processing the numerous requests for discharge to groundwater.
7. The adoption of General Waste Discharge Requirements will:
 - a) simplify the application process for the Discharger,
 - b) expedite the issuance of Waste Discharge Requirements and decrease the regulatory burden on the regulated community,
 - c) free up Board staff for higher priority work, and
 - d) reduce the Board's time involved by enabling the Executive Officer to notify the Discharger, in appropriate cases, of the applicability of these general requirements adopted by the Regional Board.

These General Waste Discharge Requirements would benefit the public, the Board, and Board staff by accelerating the review process without loss of regulatory jurisdiction or oversight.

8. The beneficial uses of groundwater in the Los Angeles River and Santa Clara River Basins may include municipal and domestic supply, agricultural supply, industrial service and process supply, and freshwater replenishment.
9. The Board adopted revised Water Quality Control Plans for the Santa Clara River Basin and Los Angeles River Basin on October 22, 1990, and June 3, 1991, respectively. These Water Quality Control Plans contain water quality objectives for groundwater within the Basins. The requirements contained in this Order, as they are met, will be in conformance with the goals of these Water Quality Control Plans.
10. The State Water Resources Control Board adopted Resolution 68-16, "Statement of Policy With Respect to Maintaining High Quality of Waters in California", on October 28, 1968. This Policy states that wherever the existing quality of water is better than the quality established as objectives or adopted policies, such existing quality shall be maintained.

11. The issuance of General Waste Discharge Requirements for the discharges subject to these general requirements is exempt from the provisions of Chapter 3 (commencing with Section 21100) of Division 13 of the Public Resources Code pursuant to one or more of the following:
- a) The lead agency has prepared an Environmental Impact Report or a negative declaration based on findings pursuant to California Code of Regulations (CCR), Title 14, Chapter 3, Section 15070, which show that there will be no significant impact on water quality.
 - b) The replacement or reconstruction of existing structures will have substantially the same purpose and capacity as the structure replaced as defined in CCR, Title 14, Section 15302.
 - c) The construction of new structures or the conversion of existing small structures will have only minor modifications in the exterior of the structure as defined in CCR, Title 14, Section 15303.
 - d) The activity will cause only minor alterations to land as defined in CCR, Title 14, Section 15304.
 - e) Minor alterations in land use will not result in any changes in land use or density as defined in CCR, Title 14, Section 15305.
12. These General Waste Discharge Requirements are not intended to alter or supersede existing restrictions or conditions imposed by other government agencies.

The Board has notified interested agencies and concerned persons of its intent to adopt General Waste Discharge Requirements for specified discharges to groundwater, and has provided them with an opportunity to submit their written views and recommendations.

The Board, in a public meeting, heard and considered all comments pertaining to the tentative requirements.

IT IS HEREBY ORDERED that the Dischargers authorized under this order shall comply with the following:

A. ELIGIBILITY

1. The General Waste Discharge Requirements, contained in this Order, will regulate discharges to groundwater from: hydrostatic testing of tanks, pipes and storage vessels; construction dewatering; dust control application; water irrigation storage systems; subterranean seepage dewatering; well development and test pumping; aquifer testing; monitoring well construction; and other similar discharges, in accordance with the California Code of Regulations.

To qualify for coverage under this Order, the Discharger may be required to:

- a) submit specific hydrogeological site studies summarizing the following: regional and local hydrogeology, a site plan designating structures and operations, descriptions and details of representative water supply and monitoring wells, and water conveyance systems, soil engineering analyses of representative earth materials including site lithology, permeability, infiltration data, and any potential adverse impacts on groundwater.
 - b) demonstrate that the discharge meets the criteria set forth herein, and that specified discharges to groundwater will not adversely impact the overall quality of the regional and local groundwater basin(s), and is in accordance with the appropriate Basin Plan Water Quality Objectives, State Department of Health Services (DHS) Primary and Secondary Drinking Water Standards, and all water quality standards associated with Priority Pollutants.
 - c) demonstrate that disinfectants, if used, will not adversely impact water quality in the groundwater basin(s).
2. The discharge must not adversely impact the overall quality of the regional and local groundwater basins, must not adversely affect beneficial uses, and must have water quality characteristics in accordance with Basin Plan Water Quality Objectives, State Department of Health Services' (DHS) Primary and Secondary Drinking Water Standards, and all water quality standards associated with Priority Pollutants.

B. APPLICABILITY

1. This Order will serve as General Waste Discharge Requirements for specified discharges to groundwater.
2. Upon receipt of the Report of Waste Discharge describing such discharge, the Executive Officer shall determine, as applicable, if such discharge,

- a) involves wastewater at limits lower than, or equal to, the acceptable levels of the Basin Plan Water Quality Objectives, the State DHS Primary and Secondary Drinking Water Standards, and all water quality standards associated with Priority Pollutants,
 - b) will be completed within a time frame stated by the Discharger and approved by the Executive Officer,
 - c) has been adequately characterized by hydrogeologic assessment,
 - d) is not a threat to water quality,
 - e) does not cause the degradation of groundwater, and
 - f) does not threaten or impair any designated beneficial uses of such waters.
3. In the event the Executive Officer so finds, he shall notify the Discharger, in writing, that the proposed wastewater discharge to groundwater is subject to this Order. Appropriate cases may also be brought to the Board for adoption of individual requirements when the Executive Officer deems it desirable or necessary.
4. Should individual Waste Discharge Requirements with more specific requirements be issued to a Discharger, the applicability of these general requirements to the individual will be automatically terminated on the effective date of the individual Waste Discharge Requirements.

C. REPORT OF WASTE DISCHARGE

1. Deadline for Submission

All Dischargers shall file a Report of Waste Discharge at least 120 days before start of the discharge. The Executive Officer will determine the applicability of General Waste Discharge Requirements.

2. Failure to Submit a Report of Waste Discharge

Dischargers who fail to file a Report of Waste Discharge under Section 13260 of the California Water Code are guilty of a misdemeanor and may be liable civilly in accordance with Section 13261(b) of the California Water Code.

D. PROHIBITION

1. Discharge of wastewater is prohibited, except as specified in the Report of Waste Discharge.

E. WASTE DISCHARGE REQUIREMENTS

IT IS HEREBY ORDERED that the Discharger shall comply with the following:

1. Only those types of discharges specifically listed in the Report of Waste Discharge are authorized to be discharged by the General Waste Discharge Requirements.
2. Wastewater shall be analyzed, prior to discharge, to determine if it contains constituents in excess of the appropriate Basin Plan Water Quality Objectives, as listed in Tables 1 and 2 of Attachment "A".

Hydrologic and groundwater basin boundaries are included in Figures 1 and 2 of Attachment "A".

3. Wastewater shall be analyzed, prior to discharge, to determine that it does not contain constituents in excess of the Maximum Contaminant Levels (MCL) as listed in the State DHS Primary and Secondary Drinking Water Standards in Attachment "B".
4. Wastewater shall be analyzed, prior to discharge, to determine the concentrations of the chemical constituents listed in the Priority Pollutants exhibited in Attachment "B".
5. Wastewater which contains any constituent in excess of the MCL's, the Drinking Water Standards, or the Priority Pollutant standards, listed herein, shall not be discharged to groundwater.
6. Wastewater discharged to groundwater shall maintain the existing water quality, even if that existing water quality exceeds established objectives. A determination shall be made by the Executive Officer as to the applicability of water quality standards with regard to the "Statement of Policy With Respect to Maintaining High Quality of Waters in California", with each discharge, on a site-specific basis.
7. Neither the treatment nor discharge of wastewater shall cause a condition of pollution or nuisance.

8. The pH of wastewater discharged to groundwater, under this Order, shall at all times be within the range of 6.0 and 9.0 pH units.
9. Wastewater to be discharged to groundwater, under this Order, shall be retained on the areas of use, and shall not be allowed to escape as surface flow, except as provided in a National Pollutant Discharge Elimination System (NPDES) permit uniquely applicable to the specified discharge. For the purpose of this requirement, however, minor amounts of irrigation return water from peripheral areas shall not be considered a violation of this Order.
10. Wastewater discharged to groundwater shall be discharged at the site in accordance with these requirements, and only on property owned or controlled by the Discharger.
11. Wastewater which does not meet each of the foregoing requirements shall be held in impervious containers, and if transferred elsewhere, the final discharge shall be at a legal point of disposal, and in accordance with the provisions of Division 7.5 of the California Water Code. For the purpose of these requirements, a legal point of disposal is defined as one for which Waste Discharge Requirements have been established by a California Regional Water Quality Control Board, and which is in full compliance therewith.
12. Wastewater discharged to groundwater shall not contain any substance in concentrations toxic to human, animal, plant, or aquatic life.
13. Wastewater discharged to groundwater shall not impart tastes, odors, color, foaming, or other objectionable characteristics to the receiving groundwater.
14. Neither disposal nor handling of wastes shall cause a condition of pollution or nuisance or problems due to breeding of mosquitos, gnats, midges, flies or other pests.
15. The temperature of discharged wastewater shall not exceed 100°F.

F. PROVISIONS

1. A copy of this Order shall be maintained at the discharge facility and shall be available at all times to operating personnel.

General Waste Discharge Requirements
Discharge to Groundwater
Order No. 93-010

File No. 92-60

2. In the event the Discharger is unable to comply with any of the conditions of this Order due to:
 - (a) Breakdown of equipment,
 - (b) Accidents caused by human error or negligence,
 - (c) Other causes such as acts of nature,
 - (d) Facility operations,the Discharger must notify this Board, by telephone, within 24 hours of the incident, and confirm it in writing within one week of the telephone notification.
3. In accordance with Section 13260(c) of the California Water Code, the Discharger shall file a report with this Regional Board of any material change or proposed change in the character, location and/or volume of the discharge.
4. In accordance with Section 13267(b) of the California Water Code, the Discharger shall furnish, under penalty of perjury, technical monitoring program reports; such reports shall be submitted in accordance with specifications prepared by the Executive Officer.
5. The Regional Board and other authorized representatives shall be allowed:
 - (a) Entry upon premises where a regulated facility or activity is located or conducted, or where records are kept under the conditions of this Order;
 - (b) Access to copy any records that are kept under the conditions of this Order;
 - (c) To inspect any facility, equipment (including monitoring and control equipment), practices, or operations regulated or required under this Order; and
 - (d) To photograph, sample, and monitor for the purpose of assuring compliance with this Order, or as otherwise authorized by the California Water Code.
6. In accordance with Section 13263(e) of the California Water Code, these Waste Discharge Requirements are subject to periodic review and revision by this Regional Board.
7. These requirements, prescribed herein, do not authorize the commission of any act, by the Discharger, which causes injury to the property of another, do not protect the Discharger from his/her liabilities under Federal, State, or local laws, and do not guarantee the Discharger a capacity right in the receiving groundwater.

8. If hazardous or toxic materials or hydrocarbons are stored at the facility and the facility is not monitored at all times, a 24-hour emergency response telephone number shall be prominently posted where it can be easily discerned.

G. MONITORING REQUIREMENTS

1. The Executive Officer may prescribe a Monitoring and Reporting Program for each authorized Discharger; applicable parameters limited in the discharge shall be monitored as specified by the Executive Officer in the Monitoring and Reporting Program.
2. The Discharger shall retain records of all monitoring information and data used to complete the Report of Waste Discharge for at least three years from the date of sampling, measurement, report, or application. The retention period shall be extended during the course of any unresolved litigation regarding the discharge, or when requested by the Regional Board.
3. The Discharger shall maintain all sampling, measurement and analytical results, including: the date, exact place, and time of sampling or measurement; the individual(s) who performed the sampling or measurement; the date(s) analyses were performed; analysts' names; and analytical techniques or methods used.
4. Representative samples of the discharge shall be taken prior to discharging to the groundwater.
5. All chemical and bacteriological analyses shall be conducted at a laboratory certified for such analyses by the State of California Department of Health Services. The laboratory performing the analyses must follow all applicable QA/QC protocols.
6. The Discharger shall calibrate and perform maintenance procedures on all monitoring instruments and equipment to insure accuracy of measurements, or shall insure that both activities will be conducted.

H. REPORTING REQUIREMENTS

1. The Discharger shall file with the Regional Board (Attention: Technical Support Unit) technical reports on self-monitoring work performed according to the Monitoring and Reporting Program specified by the Executive Officer, and submit other reports as requested by the Regional Board.

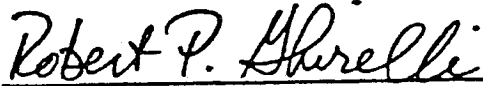
2. In reporting the monitoring data, the Discharger shall arrange the data in tabular forms such that the date, constituents, and concentrations are readily discernable. The data shall be summarized to demonstrate compliance with Waste Discharge Requirements.
3. All records and reports submitted to the Regional Board are public documents and will be made available for inspection by the public during normal business hours at the Regional Board office located at 101 Centre Plaza Drive in Monterey Park.
4. For every item where the requirements are not met, the Discharger shall submit a statement of the actions undertaken, or proposed, which will bring the discharge into full compliance with requirements at the earliest time, and submit a timetable for correction.
5. Each monitoring report must affirm in writing that:
"All analyses were conducted at a laboratory certified for such analyses by the State of California Department of Health Services, and in accordance with current EPA guideline procedures or as specified in this Monitoring Program."
6. Each report shall contain the following completed declaration:
"I declare under penalty of law that I have personally examined, and am familiar with, the information submitted in this document and all attachments, and that, based on my inquiry of those individuals immediately responsible for obtaining the information, I believe that the information is true, accurate, and complete. I am aware that there are significant penalties for submitting false information, including the possibility of fine and imprisonment. [CWC Sections 13263, 13267, and 13268]"
7. In the event that wastes, associated with the discharge under this Order, are transported to a different disposal site, the following shall be reported in the monitoring report: type and quantity of wastes; name and address of hauler (or method of transport if other than by hauling); and, location of the final point(s) of disposal.
8. In the event of any changes of subject land ownership or subject waste discharge facility currently owned or controlled by the Discharger, the Discharger shall notify the succeeding owner or operator of the existence of this Order in writing. A copy of the document shall be signed by the new owner accepting responsibility for this Order and shall be forwarded to this Regional Board.

9. The Discharger shall notify this Regional Board, within 24 hours, by telephone, of any adverse condition resulting from this discharge, and such notification shall be affirmed in writing within seven calendar days.

I. EXPIRATION DATE AND CONTINUATION OF EXPIRED GENERAL WASTE DISCHARGE REQUIREMENTS

It is the Board's intent to review this Order within five (5) years of its adoption,

I, Robert P. Ghirelli, Executive Officer, do hereby certify that the foregoing is a full, true and correct copy of an Order adopted by the California Regional Water Quality Control Board, Los Angeles Region, on January 25, 1993.



ROBERT P. GHIRELLI, D.Env.
Executive Officer

Attachment "A"

Groundwater Water Quality Objectives
Santa Clara River (4A)
Los Angeles River (4B)

Hydrologic Boundaries, CRWQCB-LA
Fig 1, Principal Surface Waters
Fig 2, Principal Ground Waters

Water Quality Objectives for Ground Waters Santa Clara River Basin (4A)				
Area	Objective in mg/L			
	TDS	Sulfate	Chloride	Boron
Rincon Creek Hydrologic Unit ^a	None Specified (n/s)			
Ventura River Hydrologic Unit	None Specified (n/s)			
Ojai Hydrologic Area (HA)				
Upper Ojai Hydrologic Subarea (HSA)	1,000	300	200	1.0
West of Sulphur Mtn Rd	700	50	100	1.0
East of Sulphur Mtn Rd				
Ojai HSA ^b				
West of San Antonio-Senior Cyn Creek	1,000	300	200	0.5
East of San Antonio-Senior Cyn Creek	700	200	50	0.5
Upper Ventura River HA				
San Antonio Creek Area	1,000	300	100	1.0
Remainder of ground water basin	800	300	100	0.5
Lower Ventura River HA ^c	None Specified			
Santa Clara-Calleguas Hydrologic Unit	None Specified			
Upper Santa Clara HA				
Acton HSA	600	150	100	1.0
Eastern HSA				
Above Bouquet Cyn ^d	800	150	150	1.0
Above Castaic Creek to Bouquet Cyn ^e	900	300	150	1.0
South Fork of Santa Clara River Area	1,300	800	100	0.5
Placerita Cyn Area	700	150	100	0.5
Castaic Creek to Blue Cut ^f	1,500	700	150	1.0
Bouquet HSA	400	50	30	0.5
Mint Cyn HSA	700	150	100	0.5
Sierra Pelona HSA	600	100	100	0.5
Piru HA				
Santa Felicia HSA (Piru Subarea)				
East of Piru Creek ^g	2,500	1,200	200	1.5
West of Piru Creek ^h	1,200	600	100	1.5
Upper Piru HSA	1,100	400	200	2.0
Hungry Valley HSA	500	150	50	1.0
Stauffer HSA	1,000	300	20	2.0
Sespe HA				
Fillmore HSA				
Pole Creek Fan underlying	2,000	800	100	1.0
City of Fillmore				
South Side of Santa Clara River	1,500	800	100	1.1
Remainder of ground water basin	1,000	400	50	0.7
Topa Topa HSA (Sespe Subarea)	900	350	30	2.0
Santa Paula HA				
Santa Paula HSA				
East of Peck Rd	1,200	600	100	1.0
West of Peck Rd	2,000	800	110	1.0
Sisar HSA	700	250	100	0.5
Oxnard Plain HA				
Oxnard HSA				
Oxnard Forebay	1,200	600	150	1.5
Deep aquifers underlying	1,200	600	150	1.5
pressure area				
Semiperched aquifer ⁱ	3,000	1,000	500	n/s

<u>Water Quality Objectives for Ground Waters</u>				
<u>Santa Clara River Basin (4A)</u>				
<u>Area</u>	<u>Objective in mg/L</u>			
	<u>TDS</u>	<u>Sulfate</u>	<u>Chloride</u>	<u>Boron</u>
Oxnard Plain HA (continued from previous page)				
Pleasant Valley HSA				
Fox Cyn Aquifer	1,200	600	150	1.0
Grimes Cyn Aquifer	1,200	600	150	1.0
Upper Aquifer ^l	None Specified			
Calleguas-Conejo HA				
West Las Posas HSA	900	350	150	1.0
East Las Posas HSA ^k				
NW of Grimes Cyn Rd, L.A. Avenue and Somis Rd	700	300	100	0.5
East of Grimes Cyn Rd and Hitch Blvd	2,500	1,200	400	3.0
South of L.A. Ave between Somis Rd and Hitch Blvd	1,500	700	250	1.0
Isolated basin near Grimes Cyn Rd and Broadway Rd	250	30	30	0.2
Arroyo Santa Rosa HSA	900	300	150	1.0
Conejo Valley HSA	800	250	150	1.0
Tierra Rejada Valley HSA	700	250	100	0.5
Gillibrand HSA	900	350	50	1.0
Simi Valley HSA				
Deep aquifers	1,200	600	150	1.0
Shallow aquifer ^l	None Specified			
Thousand Oaks HSA	1,400	700	150	1.0

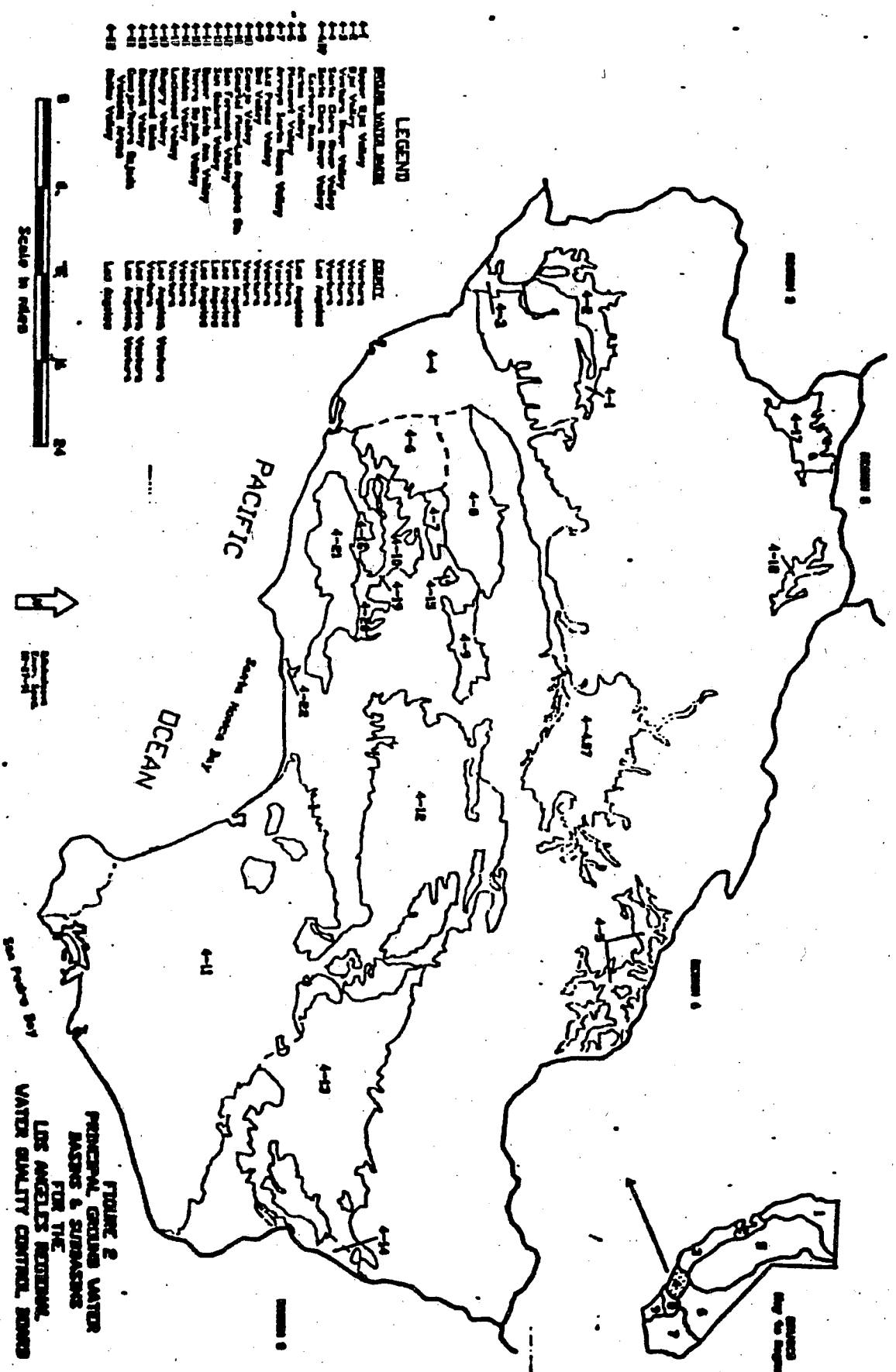
.....Endnotes

- a. Upper aquifers are of very poor quality and not used for domestic, agricultural, or industrial water supply in any significant quantity. Water quality in shallow aquifers shall be maintained at existing levels in accordance with "Resolution 68-16". This is to be accomplished on case-by-case basis as part of the requirements imposed upon dischargers to the shallow aquifers.
- b. Excludes aquifer in Bouquet Canyon and tributaries.
- c. Shallow alluvial aquifer is of very poor quality and not used. Water quality in shallow aquifer shall be maintained at existing levels in accordance with "Resolution 68-16". This is to be accomplished on a case-by-case basis as part of the requirements imposed upon dischargers to the shallow aquifer.
- d. See endnote b.
- e. Includes aquifer in Bouquet Canyon and tributaries but excludes aquifer in Castaic Creek and the South Fork of Santa Clara River and tributaries.
- f. Includes aquifer in Castaic Creek and tributaries.
- g. Includes aquifer in Piru Creek and tributaries.
- h. Excludes aquifer in Piru Creek and tributaries.
- i. Semiperched aquifer is generally of poor quality, but locally may be used for agricultural and domestic purposes in northwestern parts of the Oxnard Plain. Where shallow well or drainage ditch waters clearly exceed these objectives, requirements should be set on a case-by-case basis according to "Resolution 68-16".
- j. See endnote a.
- k. Some isolated wells along Los Angeles Avenue in the Arroyo Las Posas flood plain have higher mineral levels. Requirements for these areas should be set on a case-by-case basis according to "Resolution 68-16".
- l. See endnote a.

Water Quality Objectives for Ground Waters Los Angeles River Basin (4B)				
Area	Objective in mg/L			
	TDS	Sulfate	Chloride	Boro
Malibu Hydrologic Unit				
Topanga Hydrologic Area (HA)	2,000	500	500	2.0
Malibu Creek Hydrologic Subarea (HSA)	2,000	500	500	2.0
Las Virgenes HSA	2,000	500	500	2.0
Lindero Canyon HSA	2,000	500	500	2.0
Triunfo Canyon HSA	2,000	500	500	2.0
Russell Valley HSA	1,500	500	250	1.0
Sherwood HSA	1,000	250	250	1.0
Point Dume HA	1,000	250	250	1.0
Camarillo HA	1,000	250	250	1.0
Los Angeles-San Gabriel River Hydrologic Unit				
Coastal Plain HA				
West Coast Basin	800	250	250	1.5
Santa Monica Basin	1,000	250	250	0.5
Hollywood Basin	750	100	100	1.0
Central Basin	700	250	250	1.0
San Fernando HA				
Sylmar Basin	600	150	100	0.5
Eagle Rock Basin	800	150	100	0.5
Verdugo Basin	600	150	100	0.5
San Fernando Basin-Overall	800	300	100	1.5
Narrows Area ^a	900	300	150	1.5
Foothill Wells Area ^b	400	100	50	1.0
Headworks Area ^c	700	300	100	1.5
North Hollywood-Burbank Area ^d	600	250	100	1.5
Raymond HA				
Monk Hill HSA	450	100	100	0.5
Pasadena HSA	450	100	100	0.5
Santa Anita HSA	450	100	100	0.5
San Gabriel Valley HA				
Puente Basin ^e	1,000	300	150	1.0
Main San Gabriel Basin-Overall	550	150	100	1.0
Westerly Portion ^f	450	100	100	0.5
Easterly Portion ^g	600	100	100	0.5
Spadra Hydro HA				
Spadra HSA	550	200	120	1.0
Pomona HSA	300	100	50	0.5
Live Oak HSA	450	150	100	0.5
Anaheim HA	1,000	250	250	1.0
San Pedro Channel Island Hydrologic Unit				
Santa Catalina HA	1,000	250	250	1.0
San Clemente Island HA		no significant sources		
Santa Barbara Island HA		no significant sources		
Santa Ana River Hydrologic Unit				
Middle Santa Ana River HA	220	50	50	0.5

.....Endnotes

- a. Narrows Area is defined as that area of the San Fernando Basin adjacent to the Los Angeles River lying east of Verdugo Wash.
- b. Foothill Wells is the main extraction area in the Sundland-Tujunga Area.
- c. Headworks Area is that area lying adjacent to the Los Angeles River upstream of the confluence with Verdugo Wash encompassing in general the City of Los Angeles' Headworks, Crystal Springs, and Verdugo wells and the City of Glendale's wells among others.
- d. The North Hollywood-Burbank Area refers to the principal extraction area which includes the City of Burbank's wells, and the City of Los Angeles, North Hollywood, Erwin, and Whitnall wells among others.
- e. The Puente Basin lies adjacent to San Jose Creek upstream of the Puente Narrows. The Puente Basin and the Puente Narrows are described in the Judgment of the Upper San Gabriel Valley Municipal Water District versus City of Alhambra et al No.924128.
- f. The westerly portion of the Main San Gabriel Basin which lies west of Walnut Creek, Big Dalton Wash, and Little Dalton Wash.
- g. The easterly portion of the Main San Gabriel Basin which lies east of Walnut Creek, Big Dalton Wash, and Little Dalton Wash but does not include the Puente Basin.



LEGEND

BOUNDARY LINES

4-1 4-2 4-3 4-4 4-5 4-6 4-7 4-8 4-9 4-10 4-11 4-12 4-13 4-14 4-15 4-16 4-17 4-18 4-19 4-20 4-21 4-22 4-23 4-24 4-25 4-26 4-27 4-28 4-29 4-30 4-31 4-32 4-33 4-34 4-35 4-36 4-37 4-38 4-39 4-40 4-41 4-42 4-43 4-44 4-45 4-46 4-47 4-48 4-49 4-50 4-51 4-52 4-53 4-54 4-55 4-56 4-57 4-58 4-59 4-60 4-61 4-62 4-63 4-64 4-65 4-66 4-67 4-68 4-69 4-70 4-71 4-72 4-73 4-74 4-75 4-76 4-77 4-78 4-79 4-80 4-81 4-82 4-83 4-84 4-85 4-86 4-87 4-88 4-89 4-90 4-91 4-92 4-93 4-94 4-95 4-96 4-97 4-98 4-99 4-100

WATER BASINS

4-1 4-2 4-3 4-4 4-5 4-6 4-7 4-8 4-9 4-10 4-11 4-12 4-13 4-14 4-15 4-16 4-17 4-18 4-19 4-20 4-21 4-22 4-23 4-24 4-25 4-26 4-27 4-28 4-29 4-30 4-31 4-32 4-33 4-34 4-35 4-36 4-37 4-38 4-39 4-40 4-41 4-42 4-43 4-44 4-45 4-46 4-47 4-48 4-49 4-50 4-51 4-52 4-53 4-54 4-55 4-56 4-57 4-58 4-59 4-60 4-61 4-62 4-63 4-64 4-65 4-66 4-67 4-68 4-69 4-70 4-71 4-72 4-73 4-74 4-75 4-76 4-77 4-78 4-79 4-80 4-81 4-82 4-83 4-84 4-85 4-86 4-87 4-88 4-89 4-90 4-91 4-92 4-93 4-94 4-95 4-96 4-97 4-98 4-99 4-100

WATER SUBBASINS

4-1 4-2 4-3 4-4 4-5 4-6 4-7 4-8 4-9 4-10 4-11 4-12 4-13 4-14 4-15 4-16 4-17 4-18 4-19 4-20 4-21 4-22 4-23 4-24 4-25 4-26 4-27 4-28 4-29 4-30 4-31 4-32 4-33 4-34 4-35 4-36 4-37 4-38 4-39 4-40 4-41 4-42 4-43 4-44 4-45 4-46 4-47 4-48 4-49 4-50 4-51 4-52 4-53 4-54 4-55 4-56 4-57 4-58 4-59 4-60 4-61 4-62 4-63 4-64 4-65 4-66 4-67 4-68 4-69 4-70 4-71 4-72 4-73 4-74 4-75 4-76 4-77 4-78 4-79 4-80 4-81 4-82 4-83 4-84 4-85 4-86 4-87 4-88 4-89 4-90 4-91 4-92 4-93 4-94 4-95 4-96 4-97 4-98 4-99 4-100

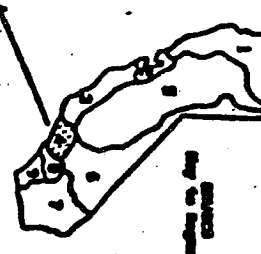
SCALE

0 1 2 3 4 5 6 7 8 9 10 11 12 13 14 15 16 17 18 19 20 21 22 23 24

Scale in miles



FIGURE 2
PRINCIPAL GROUND WATER
BASINS & SUBBASINS
FOR THE
LOS ANGELES METROPOLITAN
WATER QUALITY CONTROL BOARD



Attachment "B"

**State Department of Health Services
Primary Drinking Water Standards
Secondary Drinking Water Standards**

Priority Pollutants

Attachment "B": Drinking Water Standards and Priority Pollutants

State DHS Primary Drinking Water Standards, Maximum Contaminant Level (MCL)		
MCL	Constituent	MCL
Inorganic/Physical Constituents, MCL units of milligrams/liter (mg/L)		
1.0	Aluminum (Al)	0.05
1.0	Barium (Ba)	0.01
0.05	Chromium, total (Cr)	2.4
2.2	Fluoride (F) temp 53.8-58.3 °F	2.0
1.8	Fluoride (F) temp 63.9-70.6 °F	1.6
1.4	Fluoride (F) temp 79.3-90.5 °F	0.05
0.002	Mercury (Hg)	45.0
0.01	Selenium (Se)	0.05
Radio Chemistry, MCL units of pico curies per liter (pCi/L)		
15 (pCi/L)	Gross Alpha (α)	50 (pCi/L)
5 (pCi/L)	Combined Radium 226+228 (Ra ^{226,228})	8 (pCi/L)
	Gross Beta (β)	
	Strontium-90 (Sr ⁹⁰)	
	Lead (Pb)	
	Nitrate (NO ₃)	
	Silver (Ag)	

State DHS Secondary Drinking Water Standards		
MCL (units)	Constituent	MCL (units)
250 mg/L	Chloride (Cl)	15 units
900 µmhos	Conductivity	1.0 mg/L
0.5 units	Foaming agent (MBAS)	0.3 mg/L
0.05 mg/L	Manganese (Mn)	250 mg/L
500 mg/L	Total dissolved solids (TDS)	5 units
5.0 mg/L	Zinc (Zn)	
	Color	
	Copper (Cu)	
	Iron (Fe)	
	Sulfate (SO ₄)	
	Turbidity	

Priority Pollutants: Acid Extractables	
2,4, Trichlorophenol	P-Chloro-M-Cresol
2,4-Dichlorophenol	2,4-Dimethylphenol
4-Nitrophenol	2,4-Dinitrophenol
Pentachlorophenol	Phenol
2,4, Trichlorophenol	2-Chlorophenol
2,4-Dichlorophenol	2-Nitrophenol
4-Nitrophenol	4,6-Dinitro-o-cresol

Priority Pollutants: Base/Neutral Extractables	
Acenaphthene	Benzidine
Hexachlorobenzene	Hexachloroethane
2-Chloronaphthalene	1,2-Dichlorobenzene
1,4-Dichlorobenzene	3,3'-Dichlorobenzidine
2,6-Dinitrotoluene	1,2-Diphenylhydrazine
4-Chlorophenyl phenyl ether	4-Bromophenyl phenyl ether
Bis (2-Chloroethoxy) methane	Hexachlorobutadiene
Isophorone	Naphthalene
N-Nitrosodimethylamine	N-Nitrosodi-n-propylamine
Bis (2-Ethylhexyl) phthalate	Butyl benzyl phthalate
Di-N-Octyl phthalate	Diethyl phthalate
Benzo (A) Anthracene	Benzo (A) Pyrene
Benzo (K) Fluoranthene	Chrysene
Anthracene	1,12-Benzoperylene
Phenanthrene	1,2,5,6-Dibenzanthracene
Pyrene	TCDD
	1,2,4-Trichlorobenzene
	Bis (2-Chloroethyl) ether
	1,3-Dichlorobenzene
	2,4-Dinitrotoluene
	Fluoranthene
	Bis (2-chloroisopropyl) ether
	Hexachlorocyclopentadiene
	Nitrobenzene
	M-Nitrosodiphenylamine
	Di-N-Butyl phthalate
	Dimethyl phthalate
	Benzo (B) fluoranthene
	Acenaphthylene
	Fluorene
	Indeno (1,2,3-CD) pyrene

Priority Pollutants: Pesticides	
Aldrin	Chlordane
4,4'-DDT	4,4'-DDE
Alpha endosulfan	Beta endosulfan
Endrin	Endrin aldehyde
Heptachlor epoxide	Alpha BHC
Gamma BHC	Delta BHC
PCB 1016	PCB 1221
PCB 1242	PCB 1248
PCB 1260	
	Dieldrin
	4,4'-DDD
	Endosulfan sulfate
	Heptachlor
	Beta BHC
	Toxaphene
	PCB 1232
	PCB 1254

Priority Pollutants: Volatile Organics	
Acrolein	Acrylonitrile
Carbon tetrachloride	Chlorobenzene
1,1,1-Trichloroethane	1,1-Dichloroethane
1,1,2,2-Tetrachloroethane	Chloroethane
1,1-Dichloroethylene	1,2-Transdichloroethylene
1,2-Dichloropropylene	Ethylbenzene
Methyl chloride	Methyl bromide
Bromodichloromethane	Dibromochloromethane
Toluene	Trichloroethylene
2-Chloroethyl vinyl ether	
	Benzene
	1,2-Dichloroethane
	1,1,2-Trichloroethane
	Chloroform
	1,2-Dichloropropane
	Methylene chloride
	Bromoform
	Tetrachloroethylene
	Vinyl chloride

Attachment "B": Drinking Water Standards and Priority Pollutants

Priority Pollutants: Metals & Miscellaneous	
Antimony (Sb)	Arsenic (As)
Cadmium (Cd)	Chromium (Cr)
Lead (Pb)	Mercury (Hg)
Selenium (Se)	Silver (Ag)
Zinc (Zn)	Cyanide (CN ⁻)
	Beryllium (Be)
	Copper (Cu)
	Nickel (Ni)
	Thallium (Tl)
	Asbestos (H ₂ Mg ₃ Si ₂ O ₉)

.....Endnote

1. ^a (BWS note) Unregulated: monitoring required for all community and non-transient, non-community water systems

STANDARD PROVISIONS
APPLICABLE TO WASTE DISCHARGE REQUIREMENTS

1. DUTY TO COMPLY

The discharger must comply with all conditions of these waste discharge requirements. A responsible party has been designated in the Order for this project, and is legally bound to maintain the monitoring program and permit. Violations may result in enforcement actions, including Regional Board orders or court orders requiring corrective action or imposing civil monetary liability, or in modification or revocation of these waste discharge requirements by the Regional Board. [CWC Section 13261, 13263, 13265, 13268, 13300, 13301, 13304, 13340, 13350]

2. GENERAL PROHIBITION

Neither the treatment nor the discharge of waste shall create a pollution, contamination or nuisance, as defined by Section 13050 of the California Water Code (CWC). [H&SC Section 5411, CWC Section 13263]

3. AVAILABILITY

A copy of these waste discharge requirements shall be maintained at the discharge facility and be available at all times to operating personnel. [CWC Section 13263]

4. CHANGE IN OWNERSHIP

The discharger must notify the Executive Officer, in writing at least 30 days in advance of any proposed transfer of this Order's responsibility and coverage to a new discharger containing a specific date for the transfer of this Order's responsibility and coverage between the current discharger and the new discharger. This agreement shall include an acknowledgement that the existing discharger is liable for violations up to the transfer date and that the new discharger is liable from the transfer date on. [CWC Sections 13267 and 13263]

5. CHANGE IN DISCHARGE

In the event of a material change in the character, location, or volume of a discharge, the discharger shall file with this Regional Board a new Report of Waste Discharge. [CWC Section 13260(c)]. A material change includes, but is not limited to, the following:

- (a) Addition of a major industrial waste discharge to a discharge of essentially domestic sewage, or the addition of a new process or product by an industrial facility resulting in a change in the character of the Waste.

November 7, 1990
WDR

Standard Provisions Applicable to
Waste Discharge Requirements

- (b) Significant change in disposal method, e.g., change from a land disposal to a direct discharge to water, or change in the method of treatment which would significantly alter the characteristics of the waste.
- (c) Significant change in the disposal area, e.g., moving the discharge to another drainage area, to a different water body, or to a disposal area significantly removed from the original area potentially causing different water quality or nuisance problems.
- (d) Increase in flow beyond that specified in the waste discharge requirements.
- (e) Increase in the area or depth to be used for solid waste disposal beyond that specified in the waste discharge requirements. [CCR Title 23 Section 2210]

6. REVISION

These waste discharge requirements are subject to review and revision by the Regional Board. [CCR Section 13263]

7. TERMINATION

Where the discharger becomes aware that it failed to submit any relevant facts in a Report of Waste Discharge or submitted incorrect information in a Report of Waste Discharge or in any report to the Regional Board, it shall promptly submit such facts or information. [CWC Sections 13260 and 13267]

8. VESTED RIGHTS

This Order does not convey any property rights of any sort or any exclusive privileges. The requirements prescribed herein do not authorize the commission of any act causing injury to persons or property, do not protect the discharger from his liability under Federal, State or local laws, nor do they create a vested right for the discharger to continue the waste discharge. [CWC Section 13263(g)]

9. SEVERABILITY

Provisions of these waste discharge requirements are severable. If any provision of these requirements are found invalid, the remainder of the requirements shall not be affected. [CWC Section 921]

Standard Provisions Applicable to
Waste Discharge Requirements

10. OPERATION AND MAINTENANCE

The discharger shall, at all times, properly operate and maintain all facilities and systems of treatment and control (and related appurtenances) which are installed or used by the discharger to achieve compliance with conditions of this Order. Proper operation and maintenance includes effective performance, adequate funding, adequate operator staffing and training, and adequate laboratory and process controls including appropriate quality assurance procedures. This provision requires the operation of backup or auxiliary facilities or similar systems only when necessary to achieve compliance with the conditions of this Order. [CWC Section 13263(f)]

11. HAZARDOUS RELEASES

Except for a discharge which is in compliance with these waste discharge requirements, any person who, without regard to intent or negligence, causes or permits any hazardous substance or sewage to be discharged in or on any waters of the State, or discharged or deposited where it is, or probably will be, discharged in or on any waters of the State, shall, as soon as (a) that person has knowledge of the discharge, (b) notification is possible, and (c) notification can be provided without substantially impeding cleanup or other emergency measures, immediately notify the Office of Emergency Services of the discharge in accordance with the spill reporting provision of the State toxic disaster contingency plan adopted pursuant to Article 3.7 (commencing with Section 8574.7) of Chapter 7 of Division 1 of Title 2 of the Government Code, and immediately notify the State Board or the appropriate Regional Board of the discharge. This provision does not require reporting of any discharge of less than a reportable quantity as provided for under subdivisions (f) and (g) of Section 13271 of the Water Code unless the discharger is in violation of a prohibition in the applicable Water Quality Control plan. [CWC Section 1327(a)]

12. PETROLEUM RELEASES

Except for a discharge which is in compliance with these waste discharge requirements, any person who without regard to intent or negligence, causes or permits any oil or petroleum product to be discharged in or on any waters of the State, or discharged or deposited where it is, or probably will be, discharged in or on any waters of the State, shall, as soon as (a) such person has knowledge of the discharge, (b) notification is possible, and (c) notification can be provided without substantially impeding cleanup or other emergency measures, immediately notify the Office of Emergency Services of the discharge in accordance with the spill reporting provision of the State oil spill contingency plan adopted pursuant to Article 3.5 (commencing with Section 8574.1) of Chapter 7 of Division 1 of Title 2 of the Government Code. This provision does not require reporting of any discharge of less than 42 gallons unless the discharge is also required to be reported pursuant to Section 311 of the Clean Water Act or the discharge is in violation of a prohibition in the applicable Water Quality Control Plan. [CWC Section 13272]

Standard Provisions Applicable to
Waste Discharge Requirements

13. ENTRY AND INSPECTION

The discharger shall allow the Regional Board, or an authorized representative upon the presentation of credentials and other documents as may be required by law, to:

- (a) Enter upon the discharger's premises where a regulated facility or activity is located or conducted, or where records must be kept under the conditions of this Order;
- (b) Have access to and copy, at reasonable times, any records that must be kept under the conditions of this Order;
- (c) Inspect at reasonable times any facilities, equipment (including monitoring and control equipment), practices, or operations regulated or required under this Order; and
- (d) Sample or monitor at reasonable times, for the purposes of assuring compliance with this Order, or as otherwise authorized by the California Water Code, any substances or parameters at any location. [CWC Section 13267]

14. MONITORING PROGRAM AND DEVICES

The discharger shall furnish, under penalty of perjury, technical monitoring program reports; such reports shall be submitted in accordance with specifications prepared by the Executive Officer, which specifications are subject to periodic revisions as may be warranted. [CWC Section 13267]

All monitoring instruments and devices used by the discharger to fulfill the prescribed monitoring program shall be properly maintained and calibrated as necessary to ensure their continued accuracy. All flow measurement devices shall be calibrated at least once per year, or more frequently, to ensure continued accuracy of the devices. Annually, the discharger shall submit to the Executive Office a written statement, signed by a registered professional engineer, certifying that all flow measurement devices have been calibrated and will reliably achieve the accuracy required.

Unless otherwise permitted by the Regional Board Executive officer, all analyses shall be conducted at a laboratory certified for such analyses by the State Department of Health Services. The Regional Board Executive Officer may allow use of an uncertified laboratory under exceptional circumstances, such as when the closest laboratory to the monitoring location is outside the State boundaries and therefore not subject to certification. All analyses shall be required to be conducted in accordance with the latest edition of "Guidelines Establishing Test Procedures for Analysis of Pollutants" [40CFR Part 136] promulgated by the U.S. Environmental Protection Agency. [CCR Title 23, Section 2230]

Standard Provisions Applicable to
Waste Discharge Requirements

15. TREATMENT FAILURE

In an enforcement action, it shall not be a defense for the discharger that it would have been necessary to halt or to reduce the permitted activity in order to maintain compliance with this Order. Upon reduction, loss, or failure of the treatment facility, the discharger shall, to the extent necessary to maintain compliance with this Order, control production or all discharges, or both, until the facility is restored or an alternative method of treatment is provided. This provision applies, for example, when the primary source of power of the treatment facility fails, is reduced, or is lost. [CWC Section 13263(f)]

16. DISCHARGE TO NAVIGABLE WATERS

Any person discharging or proposing to discharge to navigable waters from a point source (except for discharge of dredged or fill material subject to Section 404 of the Clean Water Act and discharge subject to a general NPDES permit) must file an NPDES permit application with the Regional Board. [CCR Title 2 Section 22357]

17. ENDANGERMENT TO HEALTH AND ENVIRONMENT

The discharger shall report any noncompliance which may endanger health or the environment. Any such information shall be provided verbally to the Executive Officer within 24 hours from the time the discharger becomes aware of the circumstances. A written submission shall also be provided within five days of the time the discharger becomes aware of the circumstances. The written submission shall contain a description of the noncompliance and its cause; the period of noncompliance, including exact dates and times, and if the noncompliance has not been corrected; the anticipated time it is expected to continue and steps taken or planned to reduce, eliminate, and prevent recurrence of the noncompliance. The Executive officer, or an authorized representative, may waive the written report on a case-by-case basis if the oral report has been received within 24 hours. The following occurrence(s) must be reported to the Executive Office within 24 hours:

- (a) Any bypass from any portion of the treatment facility.
- (b) Any discharge of treated or untreated wastewater resulting from sewer line breaks, obstruction, surcharge or any other circumstances.
- (c) Any treatment plan upset which causes the effluent limitation of this Order to be exceeded. [CWC Sections 13263 and 13267]

18. MAINTENANCE OF RECORDS

The discharger shall retain records of all monitoring information including all calibration and maintenance records, all original strip chart recordings for continuous monitoring instrumentation, copies of all reports required by this Order, and record of all data used

Standard Provisions Applicable to
Waste Discharge Requirements

to complete the application for this Order. Records shall be maintained for a minimum of three years from the date of the sample, measurement, report, or application. This period may be extended during the course of any unresolved litigation regarding this discharge or when requested by the Regional Board Executive Officer.

Records of monitoring information shall include:

- (a) The date, exact place, and time of sampling or measurement;
 - (b) The individual(s) who performed the sampling or measurement;
 - (c) The date(s) analyses were performed;
 - (d) The individual(s) who performed the analyses;
 - (e) The analytical techniques or method used; and
 - (f) The results of such analyses.
19. (a) All application reports or information to be submitted to the Executive Office shall be signed and certified as follows:
- (1) For a corporation – by a principal executive officer or at least the level of vice president.
 - (2) For a partnership or sole proprietorship – by a general partner or the proprietor, respectively.
 - (3) For a municipality, state, federal, or other public agency – by either a principal executive officer or ranking elected official.
- (b) A duly authorized representative of a person designated in paragraph (a) of this provision may sign documents if:
- (1) The authorization is made in writing by a person described in paragraph (a) of this provision.
 - (2) The authorization specifies either an individual or position having responsibility for the overall operation of the regulated facility or activity; and
 - (3) The written authorization is submitted to the Executive Officer.

Any person signing a document under this Section shall make the following certification:

Standard Provisions Applicable to
Waste Discharge Requirements

"I certify under penalty of law that I have personally examined and am familiar with the information submitted in this document and all attachments and that, based on my inquiry of those individuals immediately responsible for obtaining the information, I believe that the information is true, accurate, and complete. I am aware that there are significant penalties for submitting false information, including the possibility of fine and imprisonment. [CWC Sections 13263, 13267, and 13268]"

20. OPERATOR CERTIFICATION

Supervisors and operators of municipal wastewater treatment plants and privately owned facilities regulated by the PUC, used in the treatment or reclamation of sewage and industrial waste shall possess a certificate of appropriate grade in accordance with Title 23, California Code of Regulations Section 3680. State Boards may accept experience in lieu of qualification training. In lieu of a properly certified wastewater treatment plant operator, the State Board may approve use of a water treatment plant operator of appropriate grade certified by the State Department of Health Services where reclamation is involved.

Each plan shall be operated and maintained in accordance with the operation and maintenance manual prepared by the municipality through the Clean Water Grant Program [CWC Title 23, Section 2233(d)]

ADDITIONAL PROVISIONS APPLICABLE TO
PUBLICLY OWNED TREATMENT WORKS' ADEQUATE CAPACITY

21. Whenever a publicly owned wastewater treatment plant will reach capacity within four years the discharger shall notify the Regional Board. A copy of such notification shall be sent to appropriate local elected officials, local permitting agencies and the press. The discharger must demonstrate that adequate steps are being taken to address the capacity problem. The discharger shall submit a technical report to the Regional Board showing flow volumes will be prevented from exceeding capacity, or how capacity will be increased, within 120 days after providing notification to the Regional Board, or within 120 days after receipt of notification from the Regional Board, of a finding that the treatment plant will reach capacity within four years. The time for filing the required technical report may be extended by the Regional Board. An extension of 30 days may be granted by the Executive Officer, and longer extensions may be granted by the Regional Board itself. [CCR Title 23, Section 2232]

STATE OF CALIFORNIA
CALIFORNIA REGIONAL WATER QUALITY CONTROL BOARD
LOS ANGELES REGION
MONITORING AND REPORTING PROGRAM NO. CI-9444

FOR

PLAY VISTA DEVELOPMENT PROJECT
6775 CENTINELA AVENUE, LOS ANGELES, CALIFORNIA 90094
(GENERAL WASTE DISCHARGE REQUIREMENTS ORDER NO. 93-010, SERIES NO. 033)

I. REPORTING REQUIREMENTS

- A. Playa Capital Company, LLC (hereinafter Discharger) shall implement this monitoring program on the effective date of this enrollment (February 12, 2009) under Regional Board Order NO. 93-010. The first monitoring report under this program for the rehabilitation of groundwater wells associated with Campus Area remediation system shall be received at the Regional Board by **May 15, 2009**. Subsequent reports shall be received at the Regional Board according to the following schedule:

<u>Monitoring Period</u>	<u>Report Due</u>
January – March	April 15
April – June	July 15
July – September	October 15
October – December	January 15

- B. If there is no discharge or injection during any reporting period, the report shall so state. Monitoring reports must be addressed to the Regional Board, Attention: Information Technology Unit.
- C. By March 1st of each year, the Discharger shall submit an annual summary report to the Regional Board. The report shall contain both tabular and graphical summaries of the monitoring data obtained during the previous calendar year. In addition, the Discharger shall explain the compliance record and the corrective actions taken, or planned, which may be needed to bring the discharge into full compliance with the waste discharge requirements (WDRs).
- D. Each monitoring report shall contain a separate section titled "Summary of Non-Compliance" which discusses the compliance record and the corrective actions taken or planned that may be needed to bring the discharge into full compliance with WDRs. This section shall be located at the front of the report and shall clearly list all non-compliance with WDRs, as well as all excursions of effluent limitations.
- E. If the Discharger performs analyses on any groundwater samples more frequently than required by this Order using approved analytical methods, the results of those analyses shall be included in the report.
- F. The Discharger shall comply with the requirements contained in Section G of Order No. 93-010 "*Monitoring and Reporting Requirements*" in addition to the aforementioned requirements.

II. HYPOCHLORITE SOLUTION INJECTION MONITORING REQUIREMENTS

1. The well rehabilitation and cleanup program constitute introduction of hypochlorite solution inside each groundwater well where biomass has accumulated and requires cleanup. The amount of the hypochlorite solution introduced in a well will be calculated based on the volume of water inside the subject well and the target hypochlorite concentration of 6,000 part per million (ppm). At the conclusion of the implementation of cleanup plan, submit the well rehabilitation report to the Regional Board according to the schedule specified in section IA.

III. GROUNDWATER MONITORING PROGRAM

At each of the well undergoing rehabilitation, groundwater shall be monitored to detect and evaluate impacts associated with the hypochlorite solution injection. Groundwater shall be monitored during well rehabilitation in accordance with the following discharge monitoring program:

CONSTITUENT	ANALYTICAL METHOD	UNITS	MINIMUM FREQUENCY OF ANALYSIS
Residual Chlorine	EPA 330.5 or 8021	mg/L	Baseline, Process
Trihalomethane	EPA 8260B	µg/L	Baseline, Process
Specific Conductivity	In situ	µmhos	Baseline, Process
pH	In situ	pH units	Baseline, Process
Temperature	In situ	⁰ F/ ⁰ C	Baseline, Process
Color	Visual		Baseline, Process
Groundwater Elevation	In situ	Feet, above mean sea level and below ground surface	Process

Baseline – background value of the constituent in groundwater (before injection)

Process –conducted on as-needed basis during implementation of cleanup plan

Quarterly – per Section IA of this Monitoring and Reporting document.

Note: The groundwater wells at Playa Vista site are under a quarterly groundwater monitoring program, which includes EPA Method 8260B analysis. Playa Capital may implement the groundwater monitoring program for the well cleanup plan to coincide with the quarterly groundwater monitoring.

IV. MONITORING FREQUENCIES

The Executive Officer can adjust monitoring frequencies to a less frequent basis or modify parameters if the Discharger makes a request and it is determined that the request is adequately supported by statistical trends of monitoring data submitted.

V. CERTIFICATION STATEMENT

Each report shall contain the following declaration:

"I certify under penalty of law that this document, including all attachments and supplemental information, was prepared under my direction or supervision in accordance with a system designed to assure that qualified personnel properly gathered and evaluated the information submitted. Based on my inquiry of the person or persons who manage the system, or those persons directly responsible for gathering the information, the information submitted is, to the best of my knowledge and belief, true, accurate, and complete. I am aware that there are significant penalties for submitting false information, including the possibility of a fine and imprisonment.

Executed on the _____ day of _____ at _____.

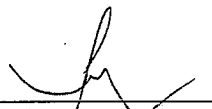
(Signature)

(Title)"

VI. PUBLIC DOCUMENTS

These records and reports are public documents and shall be made available for inspection during normal business hours at the office of the California Regional Water Quality Control Board, Los Angeles Region.

Ordered by:



Tracy J. Egoscue
Executive Officer

Date:

2/11/09

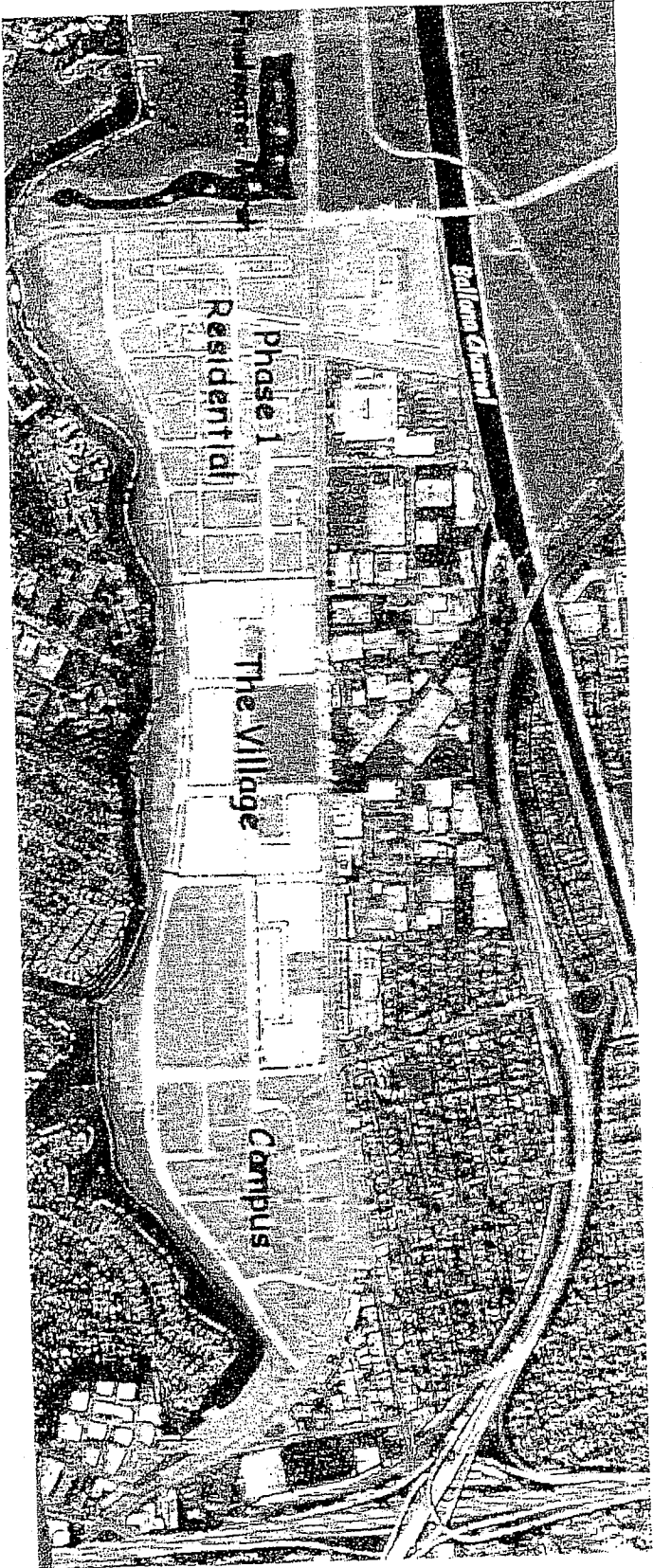


Figure 1

Site location map, Playa Vista
6775 Centinela Ave. Los Angeles California

NOT TO SCALE