

GREATER LOS ANGELES AND LONG BEACH HARBOR WATERS

1

Upstream Watershed Management and Monitoring Activities

Jolene Guerrero

June 16, 2015



Municipal Separate Storm Sewer System (MS4) Permit

2

☐ To ensure the MS4s are not causing or contributing to exceedances of water quality objectives set to protect the beneficial uses in the receiving waters.

☐ Coastal Watersheds of Los Angeles County

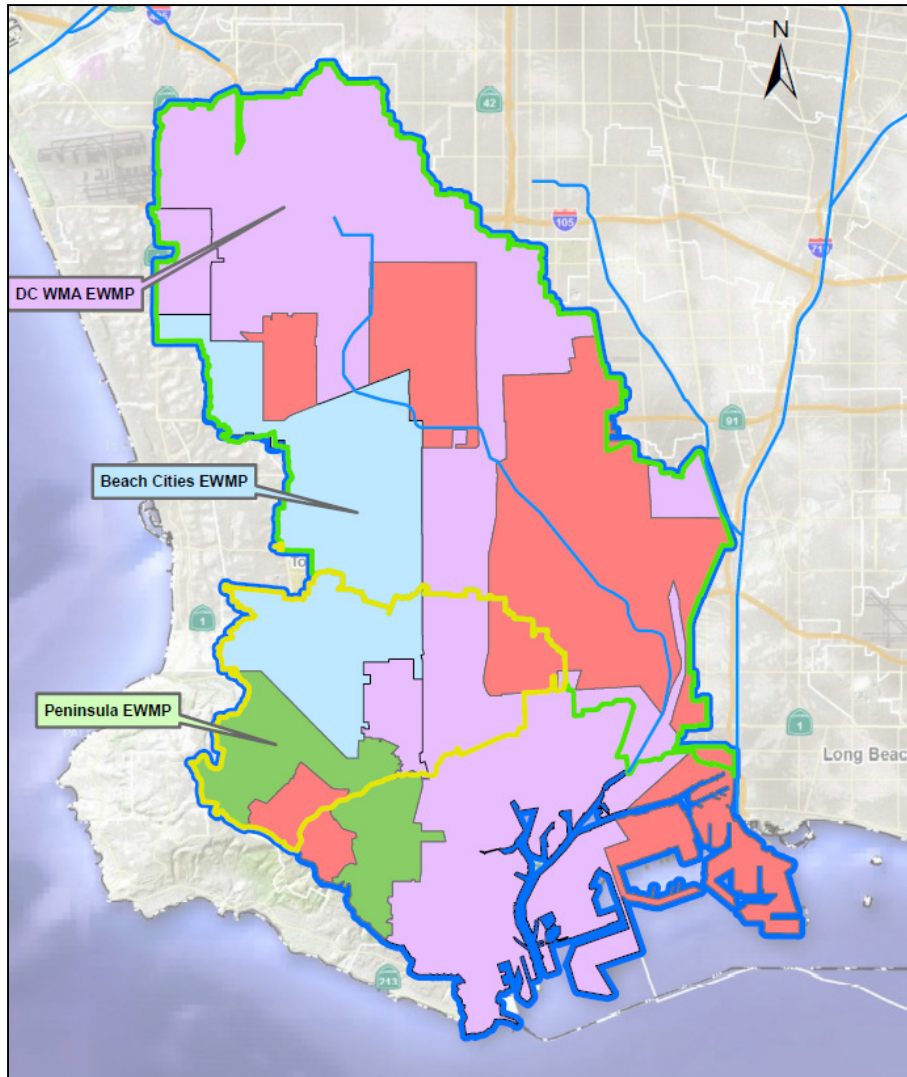
Effective on December 28, 2012

☐ Long Beach

Effective March 28, 2014

Dominguez Channel Watershed Management Area

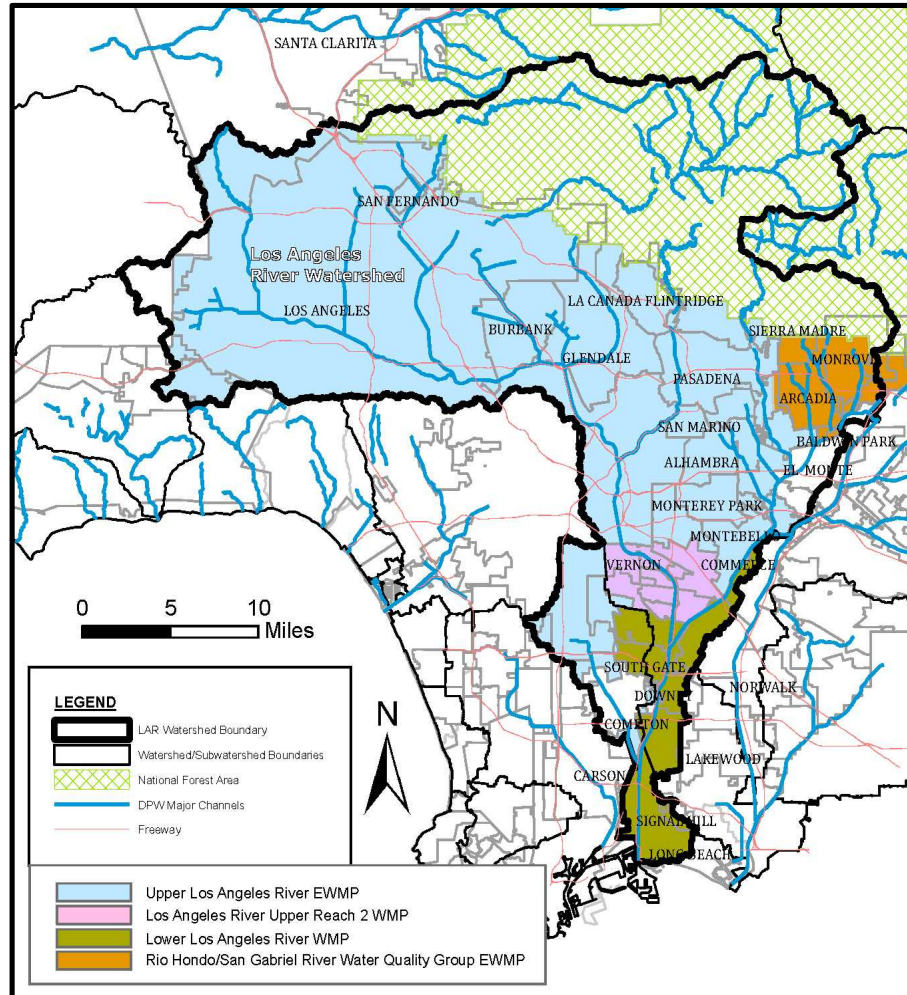
3



- 3 EWMP Groups
- 4 independent cities
- 1 WMP (Long Beach)
- Watershed Management Area
- 72 square miles tributary to Dominguez Channel
- 23 square miles tributary to Machado Lake
- 15 square miles tributary to LA Harbor

Los Angeles River Watershed

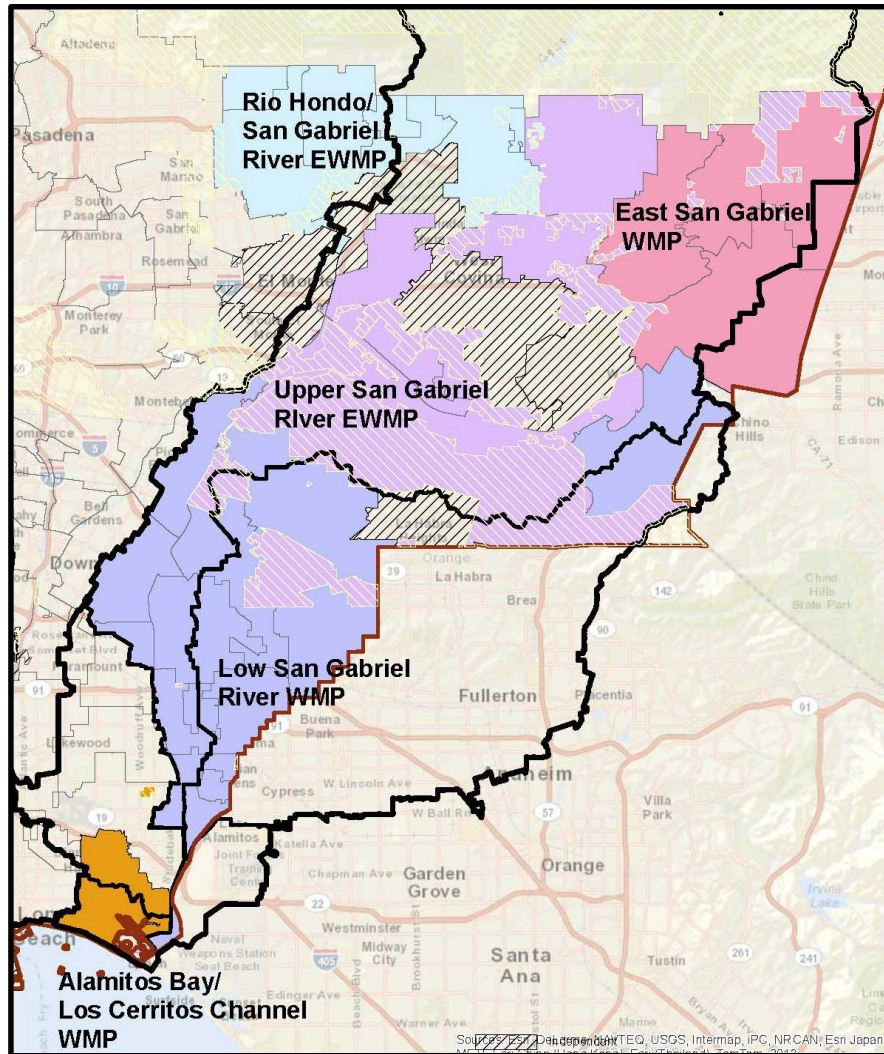
4



- 2 EWMP Groups
- 2 WMP Groups
- 4 Independent Cities
- 834 square mile tributary area

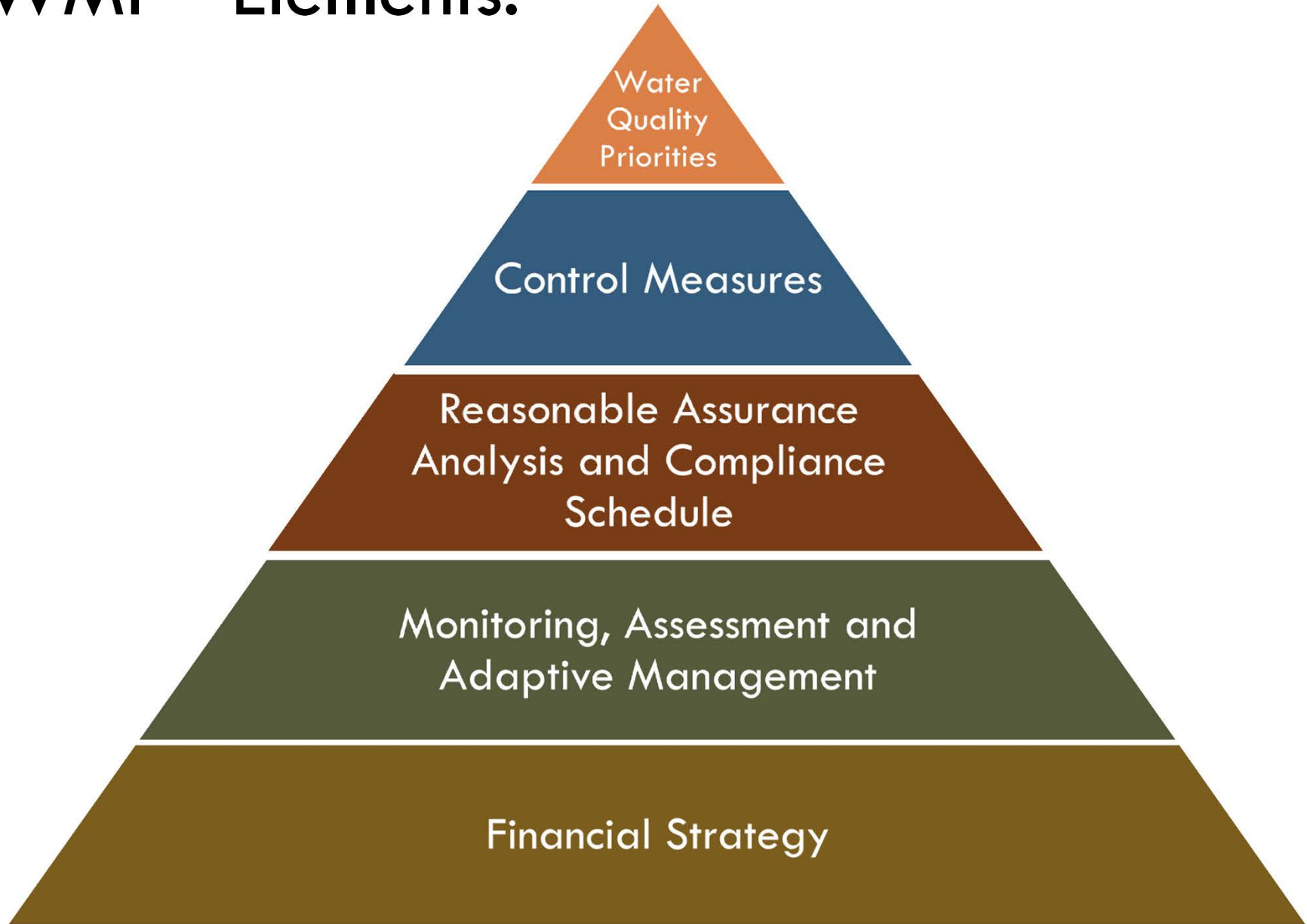
San Gabriel River Watershed

5



- 2 EWMP Groups
- 2 WMP Groups
- 5 Independent Cities
- 682 square mile tributary area

EWMP Elements:

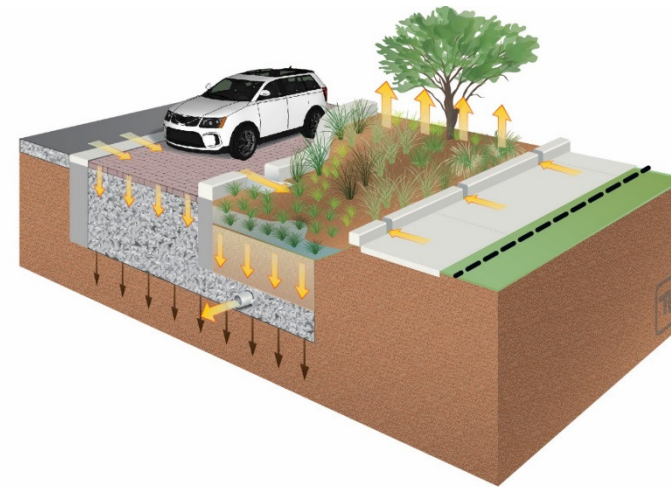
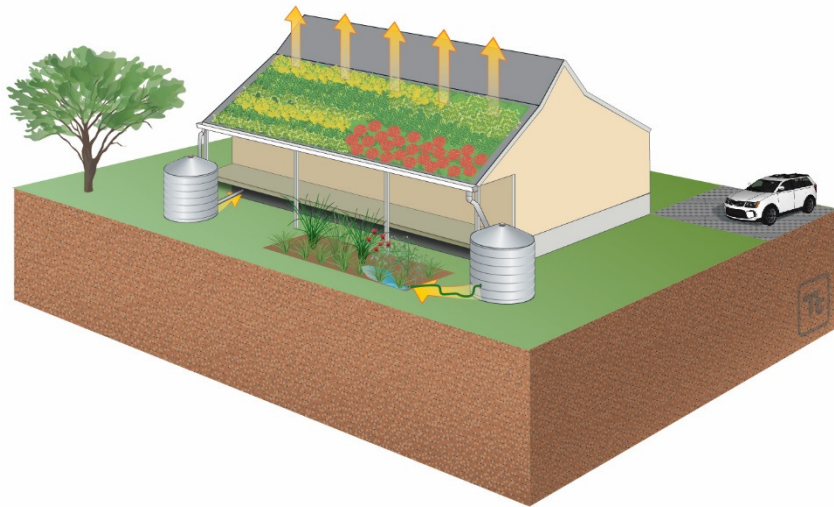


Four Primary Types of Control Measures

7

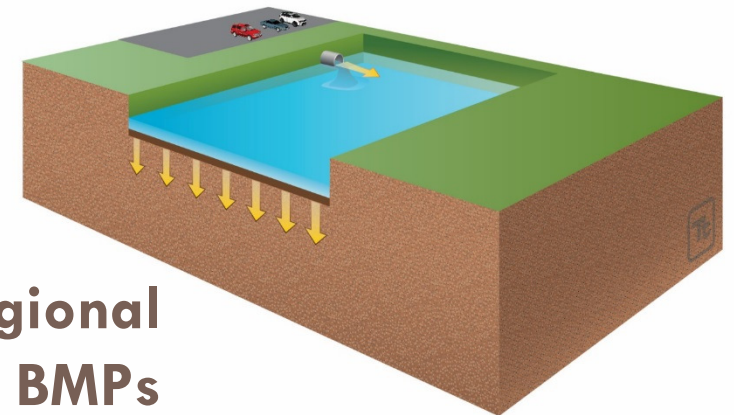
- (1) **Institutional BMPs**
e.g., Enhanced sweeping

- (3) **Low Impact Development**

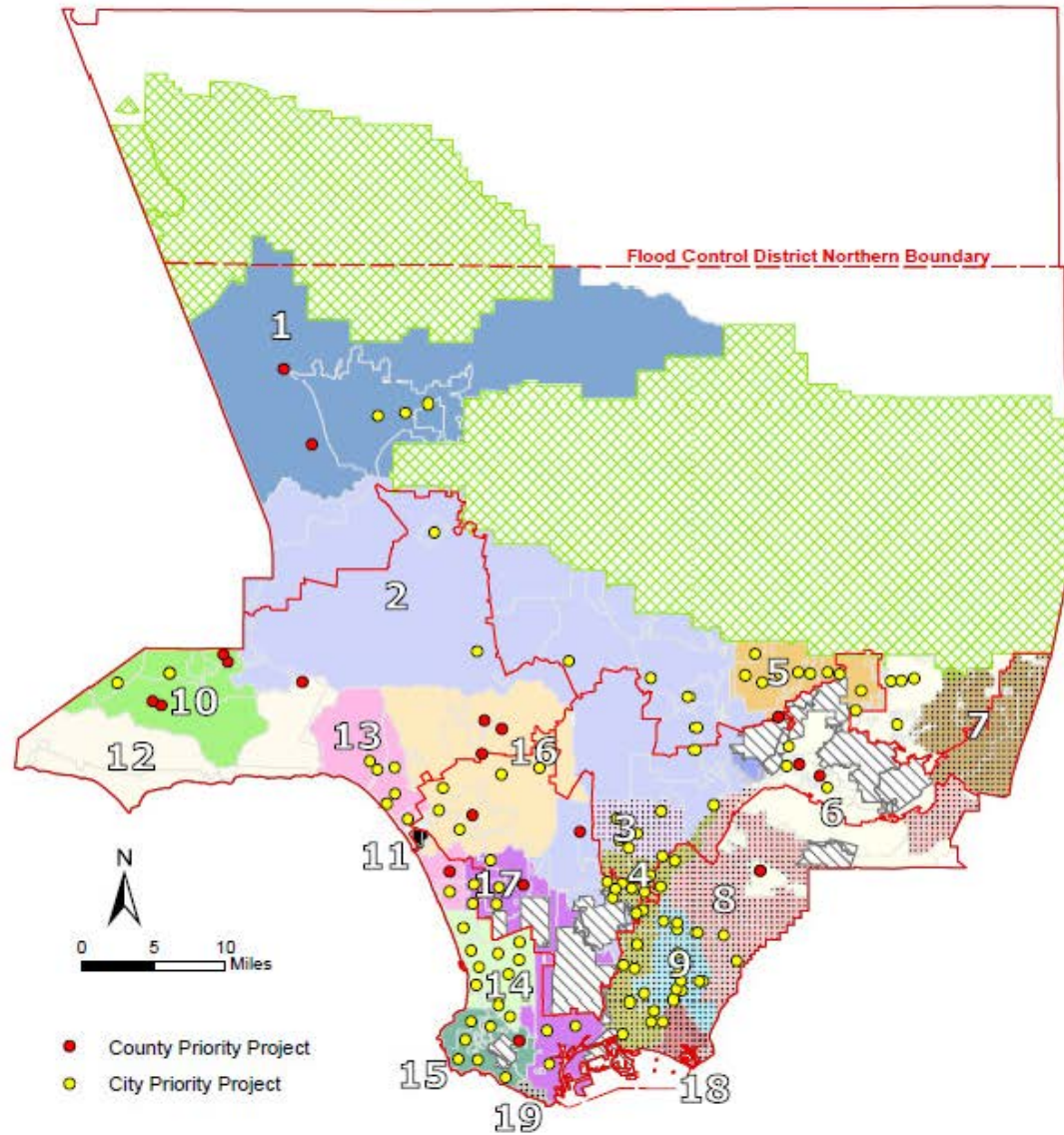


- (2) **Green Streets**

- (4) **Regional BMPs**



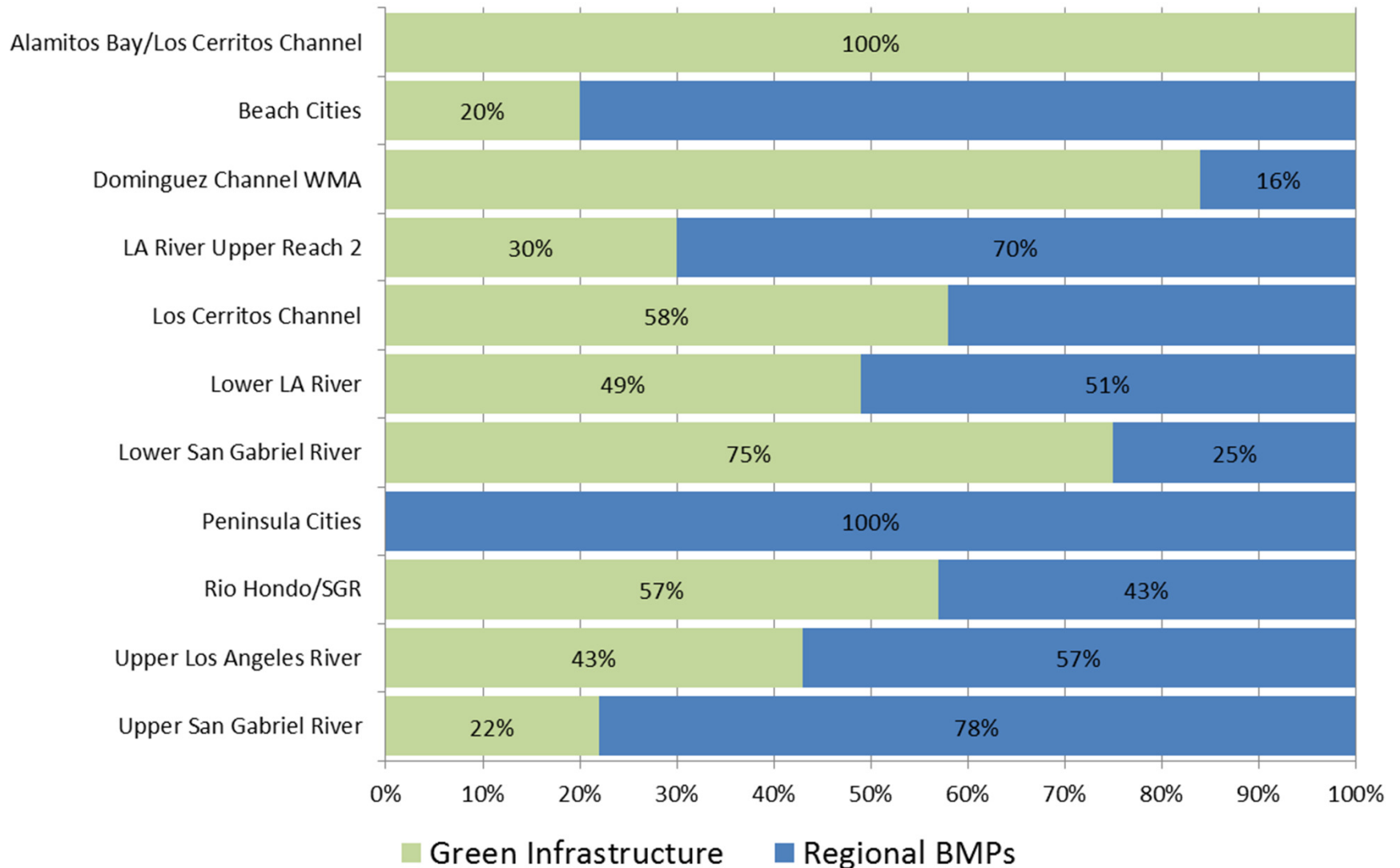
Proposed Regional Projects



Note: Approximate locations. Projects subject to change

Distribution of EWMP Projects

9



Coordinated Integrated Monitoring Program (CIMP)

10

Receiving Water Monitoring

- ▣ Water quality standards
- ▣ Effectiveness of control measures

Outfall Monitoring

- ▣ Is MS4 causing or contributing to issues?
- ▣ Jurisdiction-specific assessment
- ▣ Prioritize non-stormwater discharges

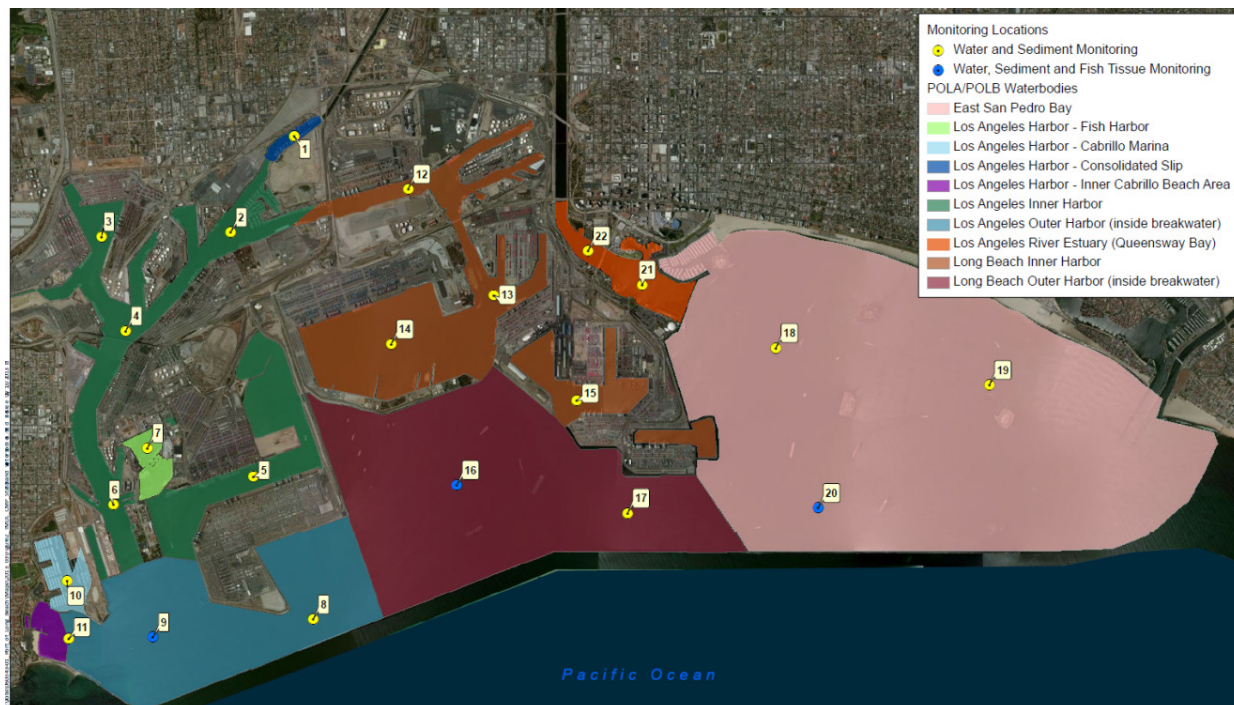
Adaptive Management

- ▣ Data will support revisions to Watershed Management Programs

Greater Harbor Regional Monitoring Coalition

11

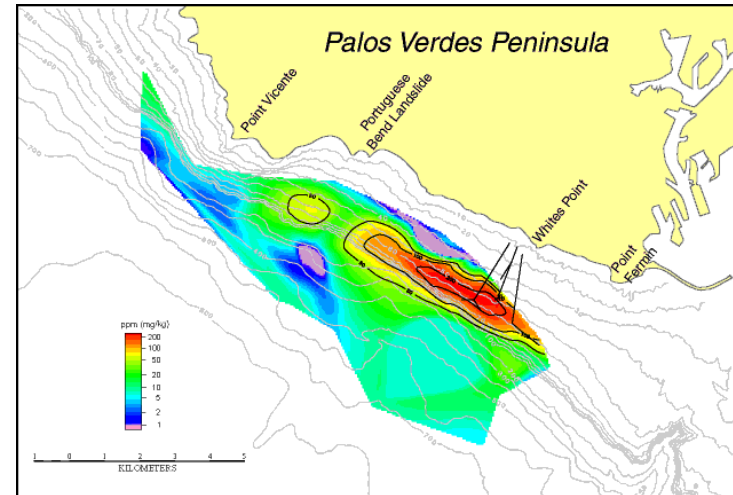
- Consists of 12 responsible agencies
- June 2013: Initial submittal to Regional Board
- June 2014: Monitoring Plan approved
- Summer 2014: Monitoring commenced



EPA: Montrose Settlement/Superfund

12

- ❑ Montrose Chemical Corporation of California manufactured pesticide DDT near Torrance (1947- 1982)
- ❑ Process effluent went to LA County Sanitation Districts (then to Palos Verdes shelf)
- ❑ Runoff went through stormwater pathway to Dominguez Channel Estuary and LA Harbor



<http://www.epa.gov/region9/socal/superfund/index.html>

- ❑ Plant shut down in early 1970s and declared Superfund Site
- ❑ Superfund Operating Unit #2 extends to southern end of Consolidated Slip in LA Harbor

Status and Updates

- Watershed Management Programs
 - WMPs have been Approved with Conditions in April 2015
 - EWMPs to be submitted on June 28, 2015
- Coordinated Integrated Monitoring Programs
 - Revised CIMP have been submitted for approval:
- Greater Harbors Regional Monitoring Coalition
 - TMDL monitoring continues per the approved Coordinated Compliance Monitoring and Reporting Plan
- Montrose Settlement/Superfund
 - Trustees have focused remedy money on landside clean up and PV shelf

Many management and monitoring activities upstream are currently being implemented to address toxic impairment in the Harbor

