

**State of California
California Regional Water Quality Control Board
Los Angeles Region**

**Monitoring and Reporting Program No. CI-5766
for
Claremont McKenna College, Pitzer College and The Claremont Colleges
(Claremont Landfill)
(File No. 66-016)**

This Monitoring and Reporting Program (MRP, No. CI-5766) is issued by the California Regional Water Quality Control Board, Los Angeles Region (Regional Water Board) to Claremont McKenna College, Pitzer College and The Claremont Colleges (Discharger) for the Claremont Landfill (Landfill) pursuant to California Water Code (CWC) section 13267(b). This MRP is incorporated by reference into Regional Water Board Order No. R4-2019-XXXX (Order), adopted on July 11, 2019. The Discharger shall begin implementing this MRP following the adoption of the Order. This MRP is required to assure compliance with the conditions of the Order and is issued to the Discharger, which is the operator of the Landfill. The first monitoring report under this program is due by [November 15, 2019](#).

I. Reporting

- A. The Discharger shall implement and comply with the MRP attached to this Order and any revisions issued by the Executive Officer upon adoption of this Order. The Dischargers shall submit semi-annual monitoring reports, acceptable to the Executive Officer, no later than May 15th and November 15th of each year in accordance with the MRP. The May 15th report shall include an annual summary as described in the MRP. The semi-annual reports shall include both groundwater monitoring data as required in Section II and the waste disposal information as required in Section III of this MRP.
- B. A transmittal letter that contains the essential points of the report shall accompany each report. Such a letter shall include a discussion of any violations since the last such report was submitted and shall describe actions taken or planned for correcting those violations. If the Discharger has previously submitted a detailed time schedule for correcting said violations, a reference to the correspondence transmitting such schedule will be satisfactory. If no violations have occurred since the last submittal, this shall be stated in the transmittal letter. Monitoring reports and the letter transmitting the monitoring reports shall be signed by a principal executive officer at the level of vice president or above, or by his/her duly authorized representative, if such a representative is responsible for the overall operation of the facility from which the discharge originates. The letter shall be signed and certified as required by Provision [D.14](#) of the Order.
- C. The Discharger shall arrange the data in tabular form so that the specified information is readily discernible. The data shall be summarized in such a manner as to clearly illustrate whether the facility is operating in compliance with the WDRs.

- D. If hazardous or other unacceptable wastes are detected, the Regional Water Board shall be notified by telephone within 24 hours and by writing within seven days. The type, source, quantity, and final disposition of those wastes shall also be reported.
- E. If the Discharger performs analyses for any parameter more frequently than required by this MRP, using approved analytical methods, the results shall be included in the next scheduled monitoring report.
- F. The Discharger may submit additional data to the Regional Water Board that are not required by this MRP in order to simplify reporting to multiple agencies.
- G. The Discharger shall retain records of all monitoring information, including all calibration and maintenance records regarding monitoring instrumentation, and copies of all data submitted to regulatory agencies, for a period of at least five years. This period may be extended by request of the Regional Water Board at any time and shall be extended during any unresolved litigation regarding all or any part of the Landfill.
- H. The reporting period and the compliance file number (CI-5766) must be clearly displayed on the title page to facilitate routing to the appropriate staff and file.
- I. The Discharger shall submit all scheduled reports required in the Order, including those required by this MRP, pursuant to electronic submittal of information (ESI) reporting requirements, or as directed by the Regional Water Board Executive Officer. Until directed otherwise by the Regional Water Board Executive Officer, all reports shall be submitted to the State Water Board GeoTracker data system in searchable Portable Document Format (PDF) files (GeoTracker Global ID L10002913798). In addition, all groundwater analytical data and monitoring well locations shall be submitted to GeoTracker in Electronic Deliverable Format (EDF). Documents that cannot be conveniently reviewed in electronic format, such as large maps or drawings, shall be submitted as hard copies to the Regional Water Board office as instructed by Regional Water Board staff.

II. Groundwater Monitoring

- A. The groundwater monitoring network of the Landfill shall include monitoring well Pit Well No. 1 (Figure A-1). Within 60 days of the adoption of this Order, the Discharger shall submit for Regional Water Board Executive Officer approval, a technical workplan to establish at least two additional groundwater wells in order to monitor groundwater downgradient of the Landfill in both the Pomona Subbasin and the Chino Basin portions of the Site.
- B. All groundwater monitoring points must be monitored semi-annually. The Executive Officer may require the Discharger to install additional groundwater monitoring points, including the installation of monitoring wells, with the progress of operations at the Landfill.
- C. All water samples shall be analyzed for the following constituents:

Parameter
pH

Units
pH units

**Claremont McKenna, Pitzer, The Claremont Colleges
Claremont Landfill
Monitoring and Reporting Program No. CI-5766**

Order No. R4-2019-XXXX

Alkalinity	milligrams per liter (mg/l)
Chemical oxygen demand	mg/l
Total dissolved solids	mg/l
Total Hardness	mg/l
Chloride	mg/l
Sulfate	mg/l
Nitrate (as N03)	mg/l
Boron	mg/l
Cadmium	micrograms per liter (µg/l)
Chromium	µg/l
Iron	µg/l
Lead	µg/l
Nickel	µg/l
Volatile organic compounds	µg/l

- D. Semi-annual sampling shall be performed during the months of March and September. In the event sampling is not performed as above because of unforeseen circumstances, substitute sampling shall be performed as soon as possible after these times, and the reason for the delay shall be given.
- E. The groundwater monitoring program is to be continued even during periods when no wastes are deposited at the Landfill, and throughout the active life of the Landfill.
- F. Unless otherwise permitted by the Regional Water Board Executive Officer, all data produced and reports submitted under the MRP must be generated by a laboratory accredited by the State of California Environmental Laboratory Accreditation Program (ELAP). The laboratory must hold a valid certificate of accreditation for the analytical test methods specified in the latest edition of the USEPA Test Methods for Evaluating Solid Waste, Physical/Chemical Methods (SW-846) promulgated, or equivalent analytical test methods validated for intended use and approved by the Regional Water Board Executive Officer. The laboratory must include quality assurance/quality control data in all laboratory reports. Data generated using field tests is exempt pursuant to Water Code section 13176.
- G. Analytical data reported as "less than" shall be reported as less than a numeric value, or below the limit of detection for that analytical method. The method detection limit for all constituents shall be specified in the reports.
- H. All analytical samples obtained for this MRP shall be grab samples. The water quality monitoring report must also include the following:
1. Sampling protocol and analytical methods used;
 2. Chain of custody documentation;
 3. Well purge data;

**T
E
N
T
A
T
I
V
E**

4. If any required samples were omitted during the reporting period, a statement to that effect shall be made and reasons given for any omission;
5. Groundwater elevations measured to the nearest 0.01 foot relative to mean sea level. The velocity and direction of ground water flow under the Landfill shall be determined after each monitoring event and reported;
6. For any monitored waste parameter which is listed as such by the U.S. EPA or by the State, the Discharger shall compare such data to the most stringent allowable concentrations under all existing Federal and State regulations; and
7. An evaluation of the results of the testing signed by a California professional geologist or professional civil engineer.

III. Waste Disposal Reporting

All semi-annual reports to the Regional Water Board shall include the following information:

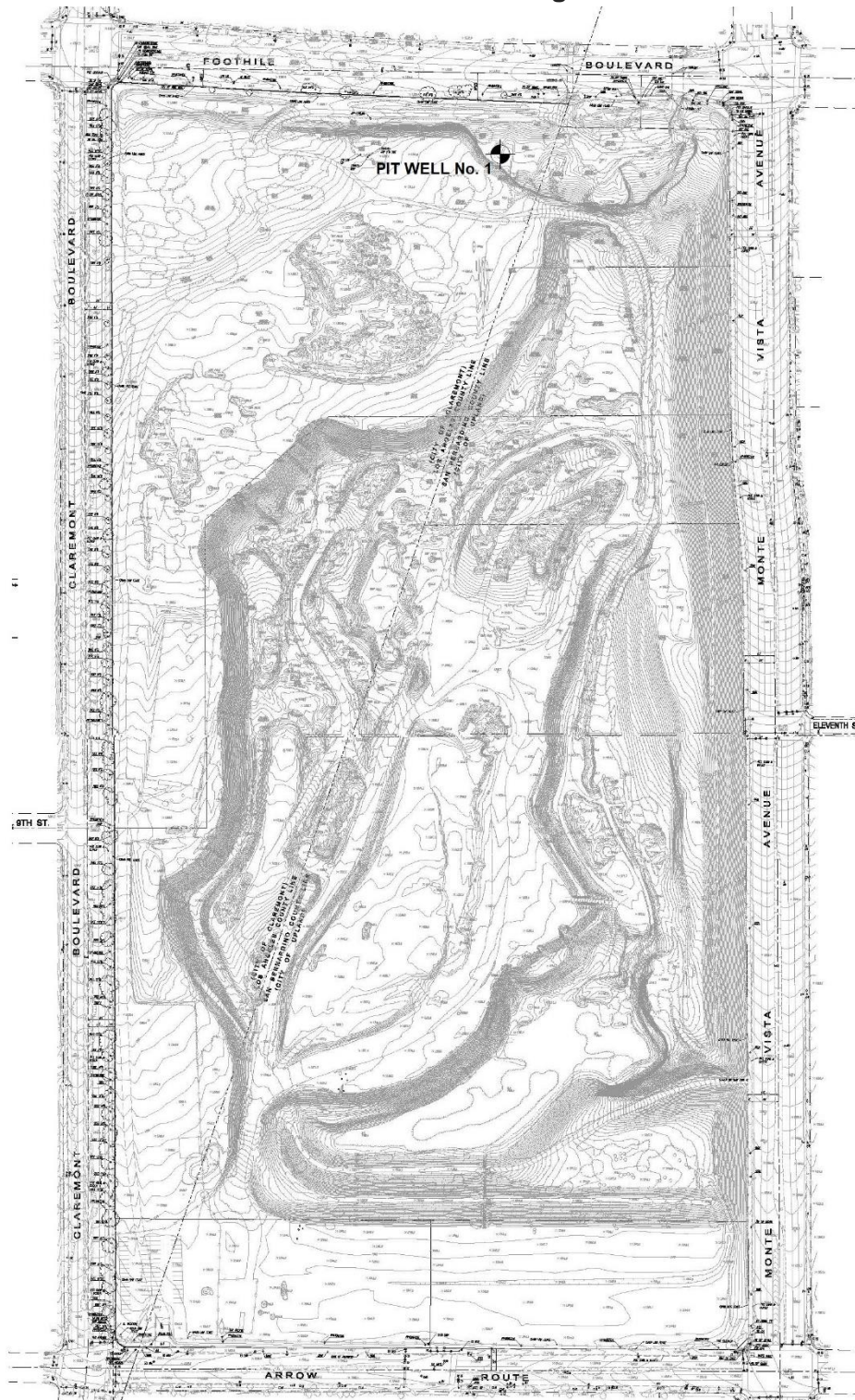
- A. A map showing the areas at the Landfill where wastes were deposited during the monitoring period.
- B. A tabular list of the estimated average monthly quantities (in cubic yards or tons) of materials deposited each month and the methods of disposal.
- C. Quantities (in tons or cubic yards) of unacceptable materials (such as household trash, wood, etc.) that were removed and sent out from the Landfill in each month. The places where these unacceptable materials were sent to shall also be reported.
- D. Quantities (in tons or cubic yards) of recycled materials (such as steel, crushed concrete, asphalt, etc.) that were sent out from the Landfill in each month.
- E. An estimate of the remaining life of the Landfill in years and months.
- F. A certification that all wastes disposal operations at the Landfill were in compliance with Regional Water Board requirements.

These records and reports are public documents and shall be made available for inspection during normal business hours at the office of the California Regional Water Quality Control Board, Los Angeles Region.

ORDERED BY: _____
Renee Purdy
Executive Officer

DATE: July 11, 2019

Figure A-1:
Landfill Groundwater Monitoring Locations



T
E
N
T
A
T
I
V
E